

OVERVIEW

Research indicates that school climate can be either a positive influence on the learning environment or a significant barrier to learning. Positive school climate

This report summarizes the responses from your school's AISD Student Climate Survey over the last three years, and provides the current year results for all AISD schools at your level. The climate survey measures three dimensions of a school's overall climate, called Behavioral Environment, Adult/Student Interactions, and Academic Environment. Each of these three dimensions is made up of several similar concepts that are measured with groups of related items, or subscales.

<i>Dimension and Subscale</i>	Zilker 03-04	Zilker 04-05	Zilker 05-06	All Elementary Schools 05-06
Behavioral Environment	3.07	2.94	3.03	3.04
	2.83	2.79	2.85	2.79
	3.17	2.95	3.07	3.13
	3.27	3.08	3.21	3.27
Adult/Student Interactions	3.45	3.29	3.40	3.41
	3.44	3.25	3.36	3.39
	3.45	3.32	3.43	3.41
Academic Environment	3.46	3.35	3.44	3.46
	3.73	3.58	3.69	3.70
	3.37	3.27	3.36	3.39

First, examine your campus scores for changes over time. Green upward-facing arrows indicate a statistically meaningful increase in average score from the previous year, red downward-facing arrows indicate a statistically meaningful decrease from the previous year. It is particularly important to examine the individual item responses on the following pages for any subscales with meaningful changes from year to year. If you do not see any arrows, changes in your school's dimension or subscale scores may not represent meaningful differences from year to year.

If the average score for your campus has increased in a particular area, please consider campus policies and practices that may be responsible for these improvements. Conversely, if the average score has decreased, please examine any changes on your campus that may account for these declines and consider possible strategies for improvement. Page 6 contains more information about ways to improve school climate.

Scores for your campus this year should be examined relative to the scores for all schools at your level. If your school's average score for a dimension or subscale is lower than the average for all schools at your level, individual item responses will help you to identify areas for targeted improvement efforts. Alternatively, if your school's average score for this year is higher than the average for all schools at your level, individual item responses will provide more detailed information regarding specific areas of strength to help you identify successful strategies.

The following pages contain response averages for each survey item, grouped by subscale. More detailed information regarding the percentage of students selecting each response option may be found in the Appendix at the end of this report.

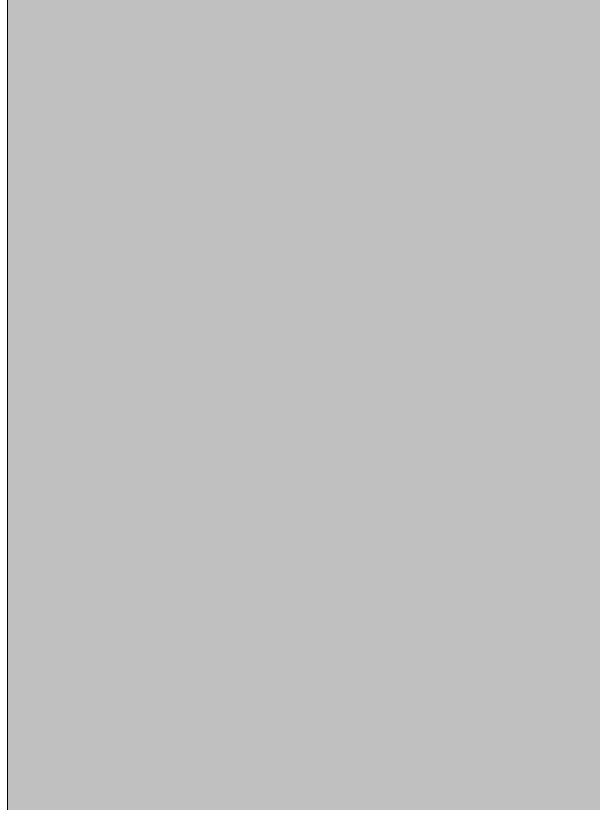
	Zilker	Zilker	Zilker	All Elementary Schools
	2.75	2.65	2.70	2.70
1. Students in my school respect each other.	2.72	2.63	2.78	2.74
2. Students at my school respect other students who are different than they are.	2.97	2.89	2.86	2.87
3. I am happy with the way students treat me at school.	3.02	3.04	3.06	2.98
14. Students at my school obey the school rules.	2.65	2.49	2.73	2.54

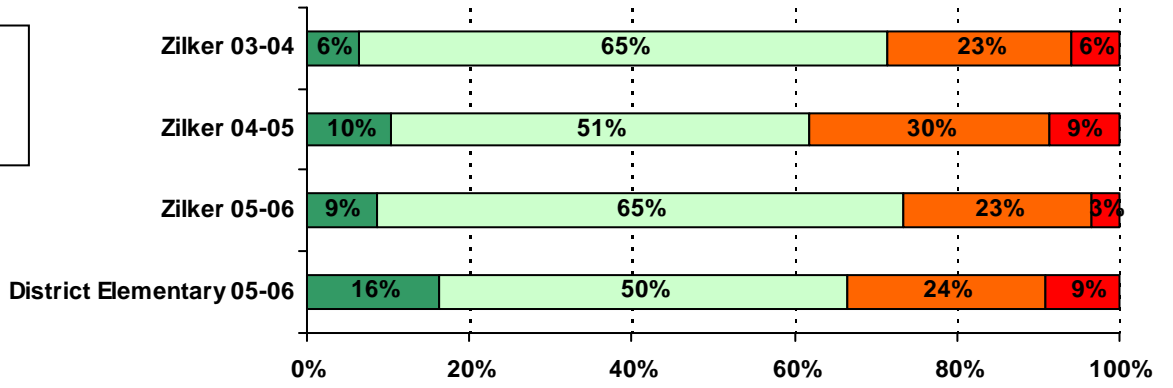
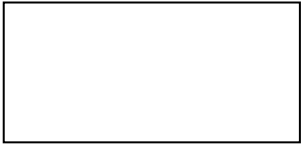
<i>Behavioral Expectations Items</i>	Zilker 03-04	Zilker 04-05	Zilker 05-06	All Elementary Schools 05-06
9. Everyone knows what the school rules are.	3.18	2.96	3.07	3.11
12. The school rules are strictly enforced.	3.28	3.03	3.13	3.24
13. If a school rule is broken, students know what kind of punishment will follow.	3.05	2.85	3.05	3.08

	Zilker 03-04	Zilker 04-05	Zilker 05-06	All Elementary Schools 05-06
18. Teachers give rewards or praise for good behavior.	3.47	3.19	3.29	3.37
31. Teachers give rewards or praise for good work.	3.40	3.16	3.26	3.33
27. My teachers are excited about what they teach.	3.45	3.15	3.35	3.41

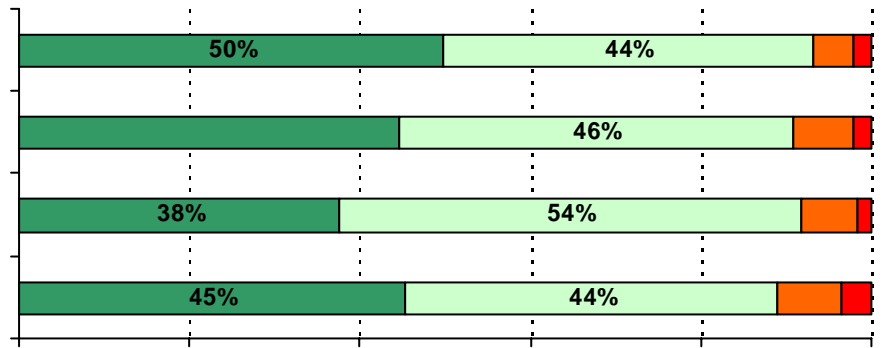
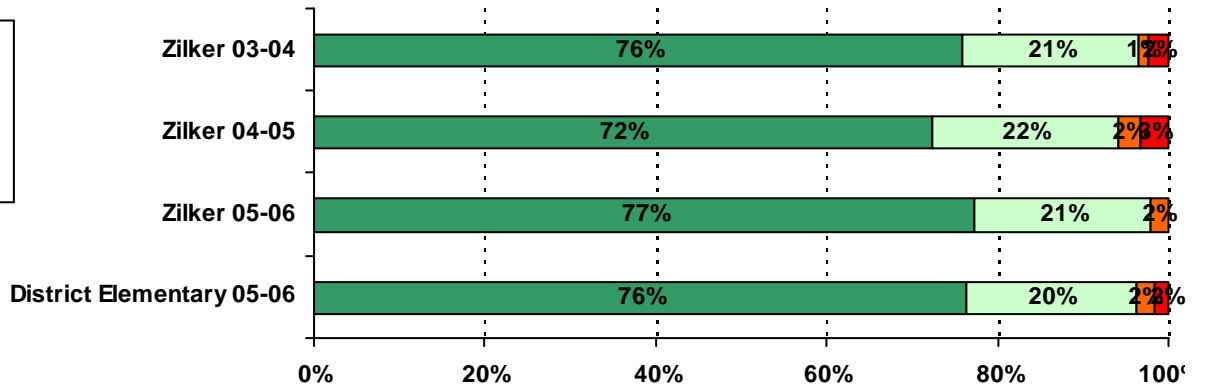
--

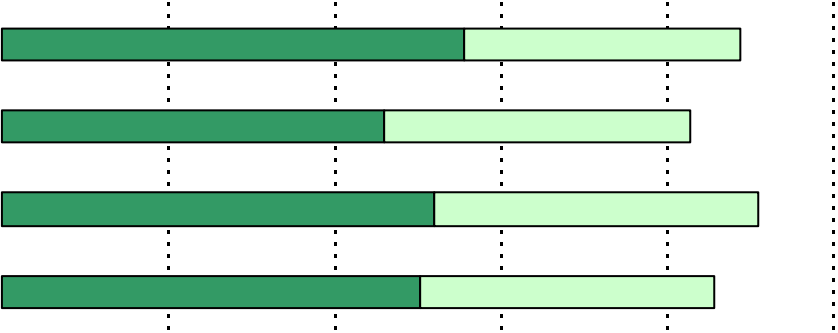
<i>Adult Fairness and Respect Items</i>	Zilker 03-04	Zilker 04-05	Zilker 05-06	All Elementary Schools 05-06
4. Teachers at this school care about their students.	3.70	3.63	3.75	3.71
5. Adults at this school listen to student ideas and opinions	3.41	3.33	3.28	3.31
6. Adults at this school treat all students fairly.	3.41	3.28	3.35	3.28
Adult Fairness and Respect Average	3.45	3.32	3.43	

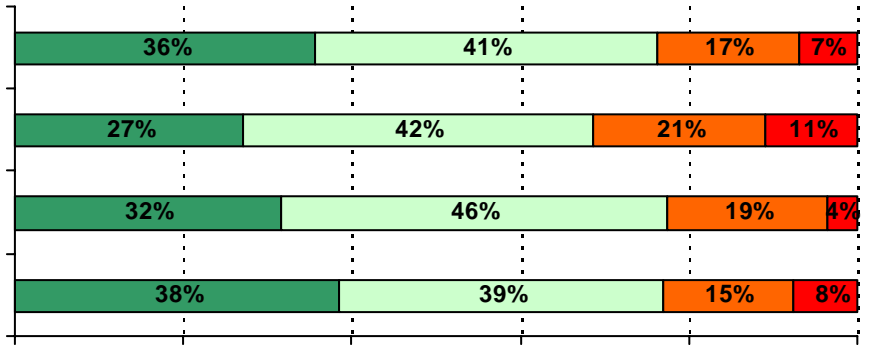




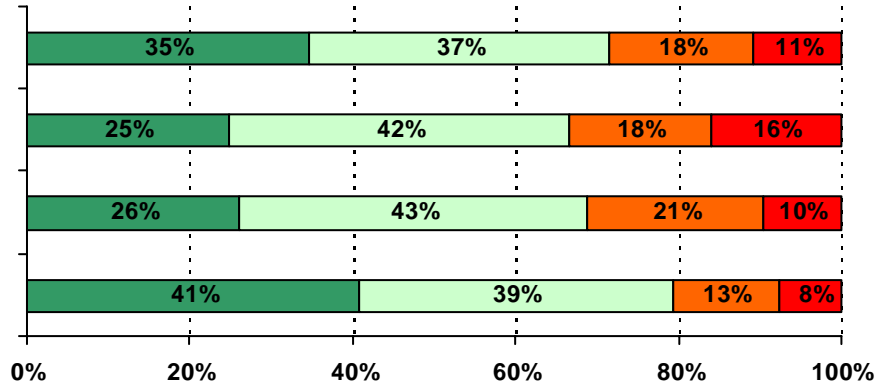
4. Teachers at this school care about their students.







D11%



8%

5

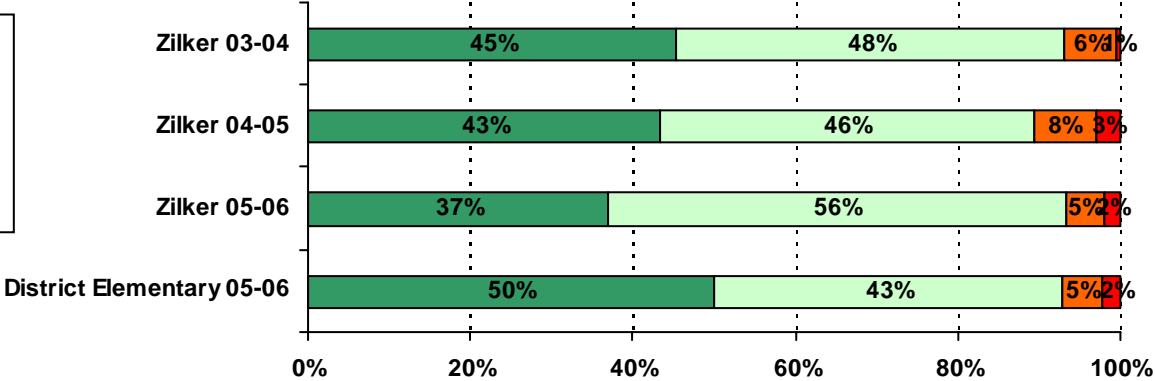
3

%

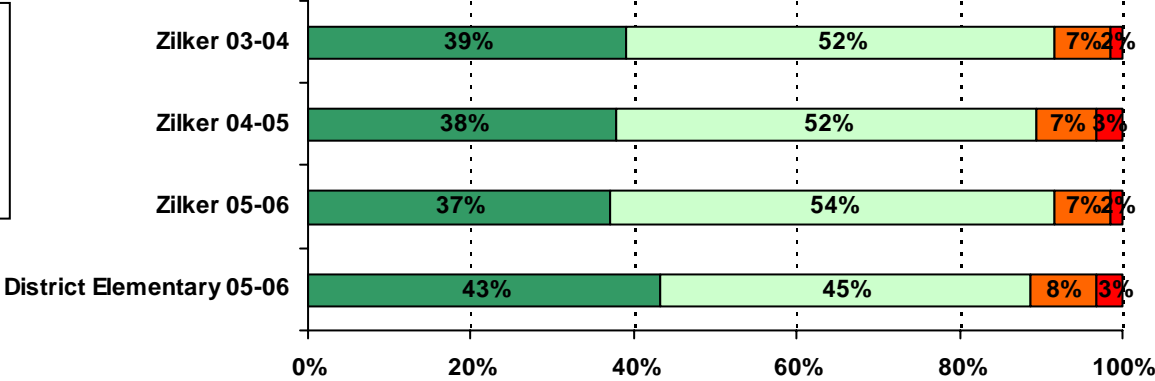
53%



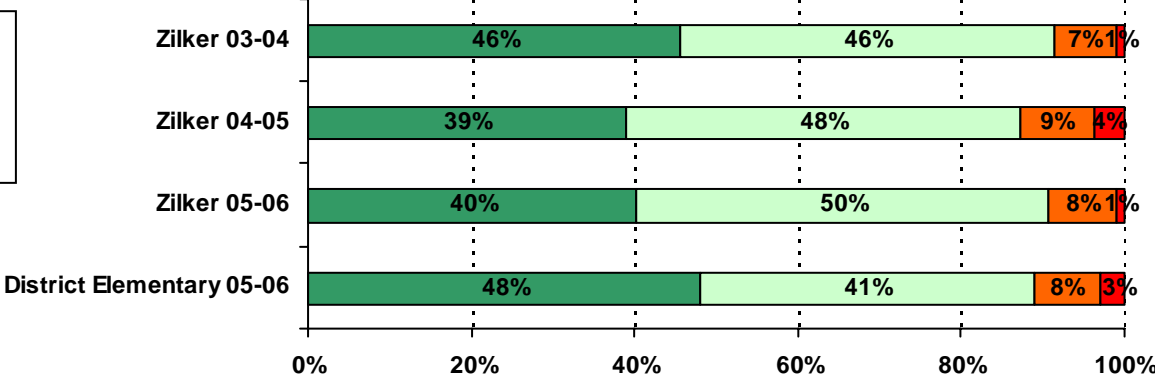
22. I have learned how to listen better so I can understand the ideas of other students.

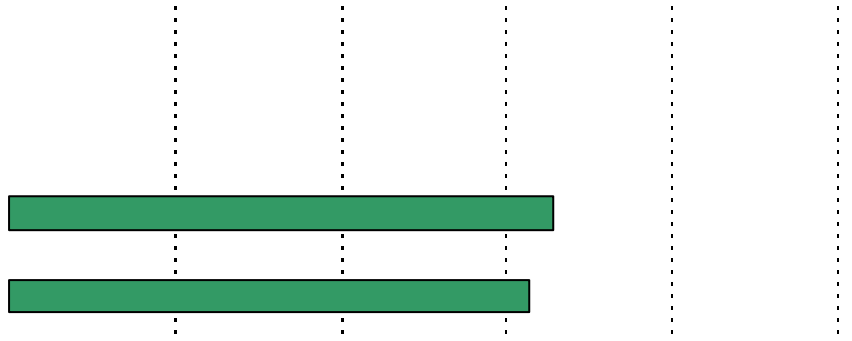


23. I have learned how to explain my ideas more clearly to others in discussions.

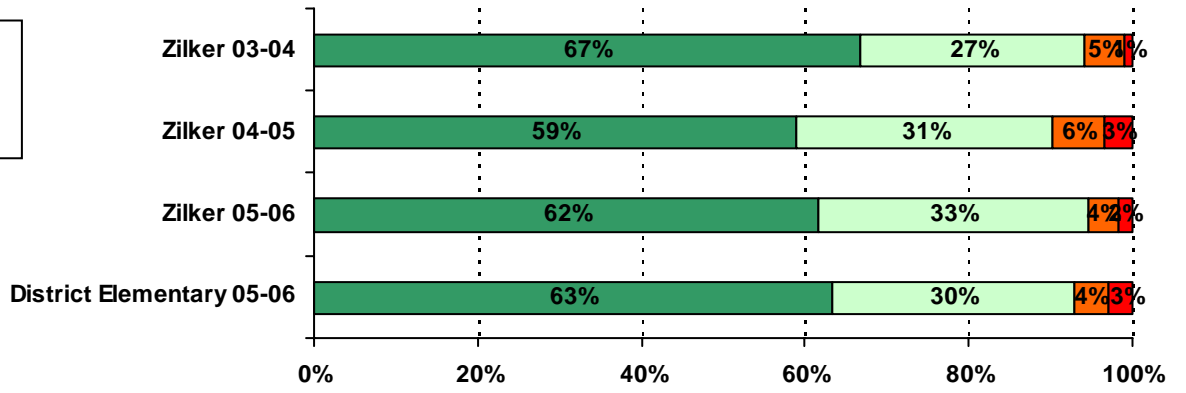


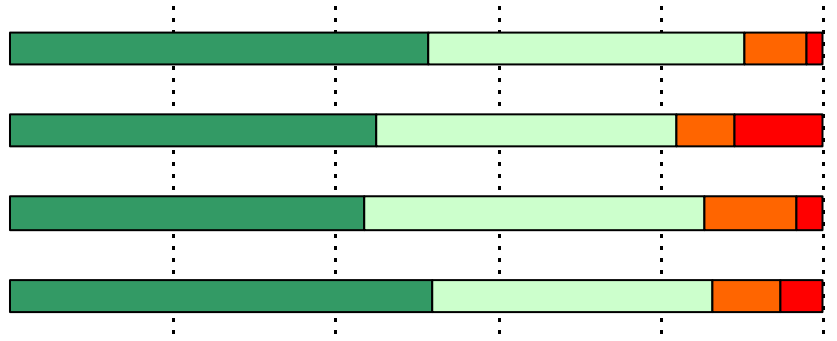
24. I have learned how to explain my ideas in writing more clearly.

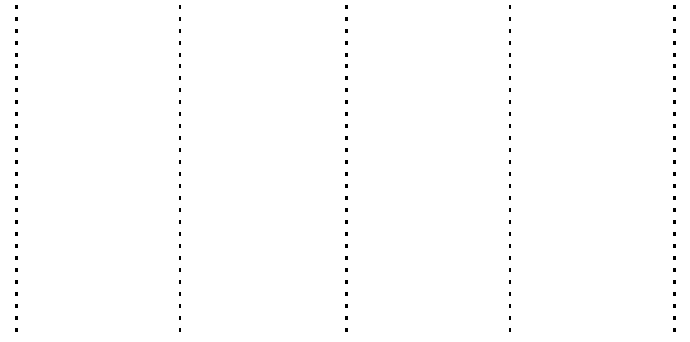




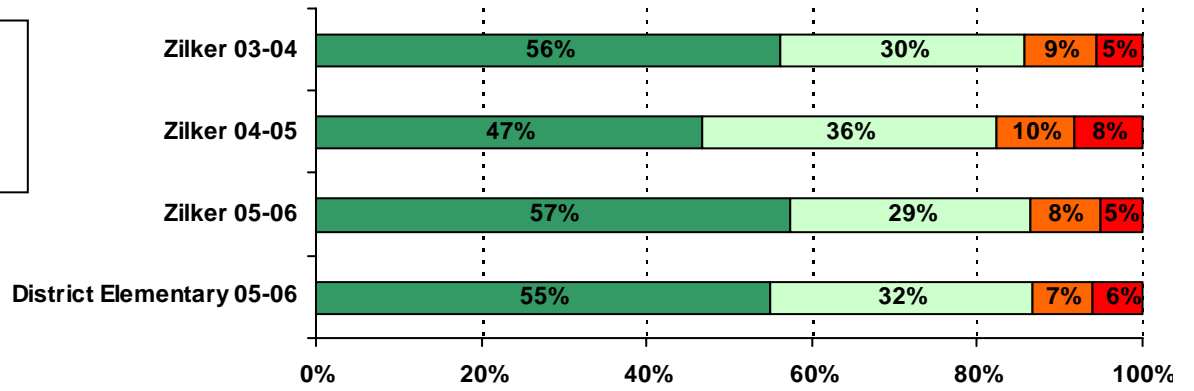
28. My teachers



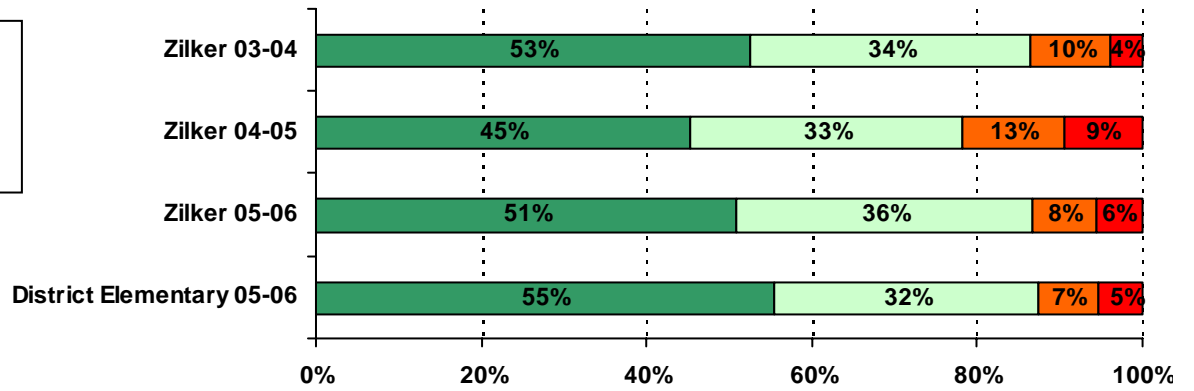




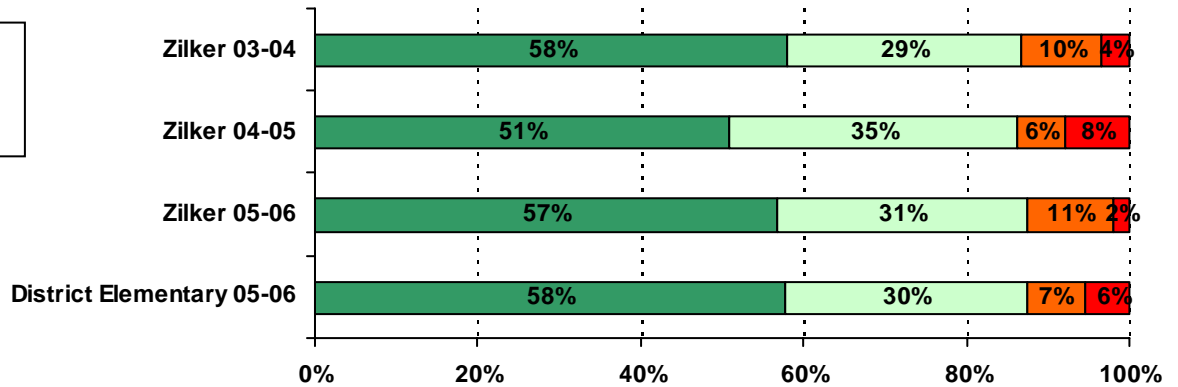
37. My teachers are understanding when I have personal problems.



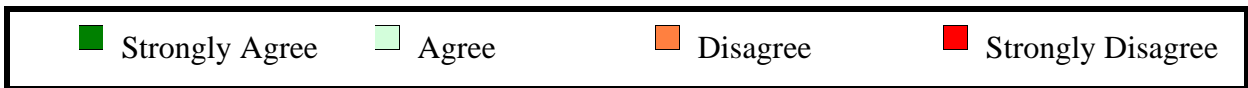
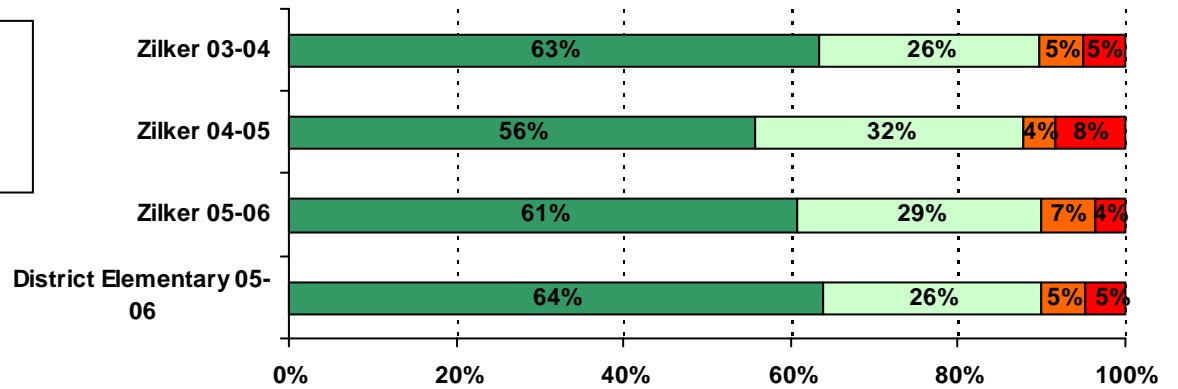
38. Teachers help students with personal problems.



40. My teachers are fair with students.



41. My teachers apply classroom rules fairly to all students.



REFERENCES

Marshall, M. L. (n.d.). Examining school climate: Defining factors and educational influences. Retrieved May 10, 2006, from Georgia State University, Center for Research on School Safety, School Climate and Classroom Management Web site: <http://education.gus.edu/schoolsafety/download%20files/wp%202002%20school%20climate.pdf>

Perkins, B. K. (2006). Where we learn. National School Boards Association. Alexandria, VA.

Stover, D. (2005). Climate and Culture: Why your board should pay attention to the attitudes of students and staff. American School Board Journal, Vol. 192, 12.