

Zilker Elementary School

How many parents responded to the survey in 2005-2006 and 2006-2007, and how does this compare to the number of students in the population each year?

	Campus	District EL	District MS	District HS
	104			
	469			
	79			
	449			

% of Students, as	
Asian	1.8%
Hispanic	36.1%
Native American	0.2%
White	57.2%

What did parents report as their child's grade, and how does this compare to the grade level distribution of the student population?

Grade	% of Students, as Reported by Campus Parent Respondents	% of Students in Campus Population
EC	3.8%	0.9%
PK	3.8%	5.8%
K	14.1%	13.8%
1st	12.8%	14.0%
2nd	21.8%	16.3%
3rd	19.2%	15.4%
4th	12.8%	14.9%
5th	10.3%	15.1%
6th	1.3%	3.8%

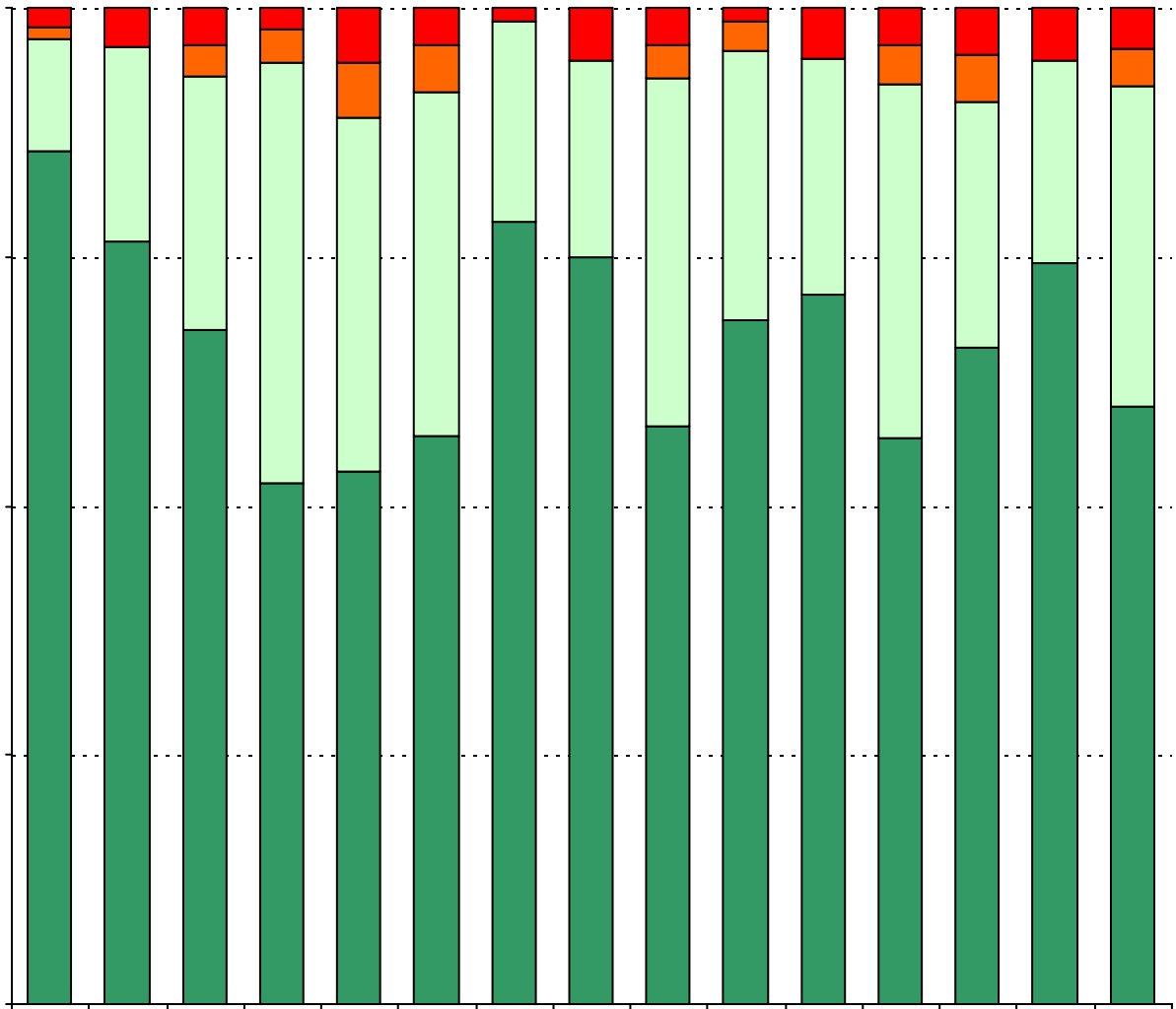
Note: Student population data are based on Fall PEIMS data submitted by the district to TEA, and may differ from the official AEIS report.

USING THE RESULTS OF THE AISD PARENT SURVEY

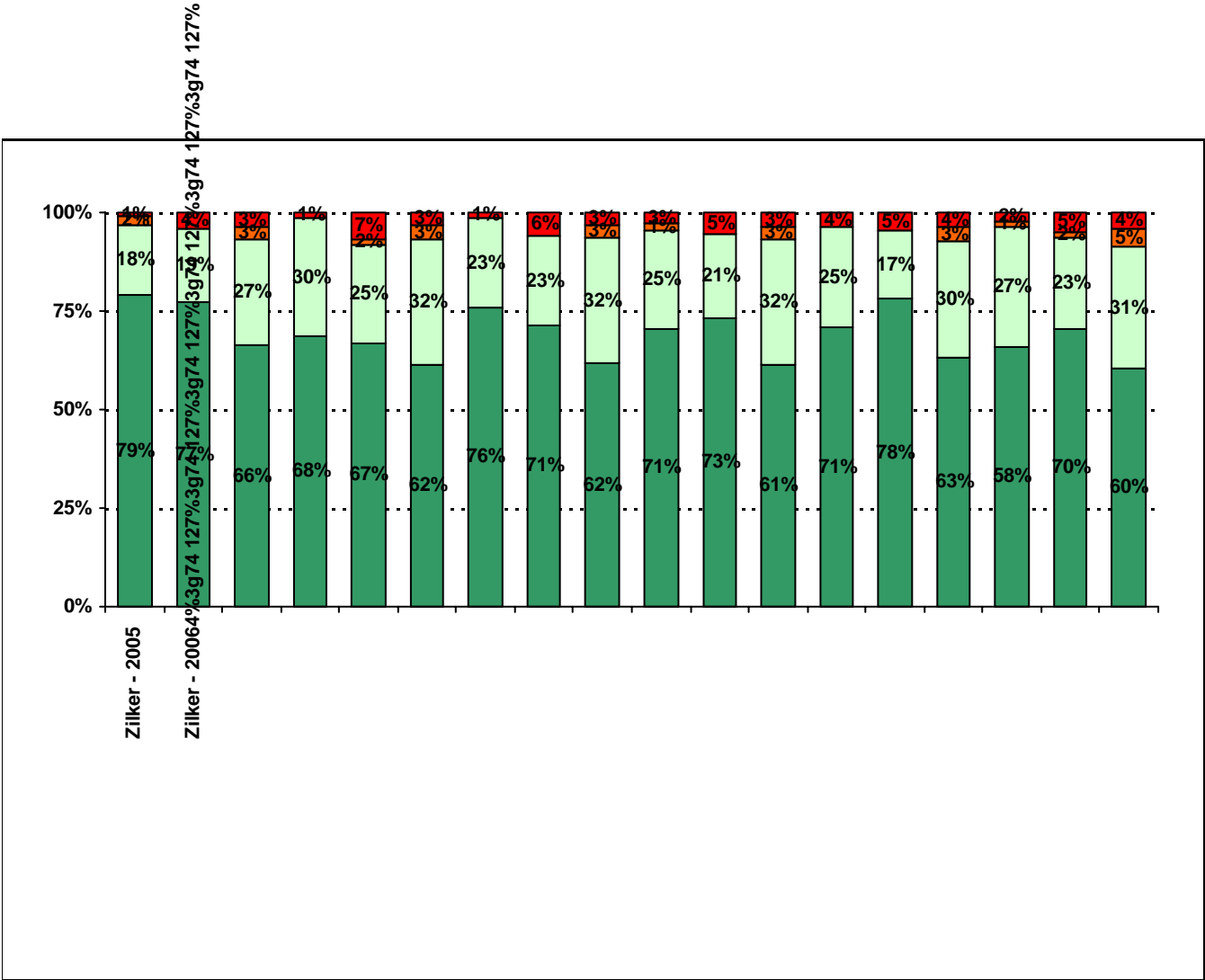
Each survey item is presented below, followed by a bar graph containing your school's results for two years and this year's results for all campuses at your level. You will be able to identify areas in which your school's results have changed over time, and you will be able to compare the responses of your school's parents to those of parents at your level district-wide.

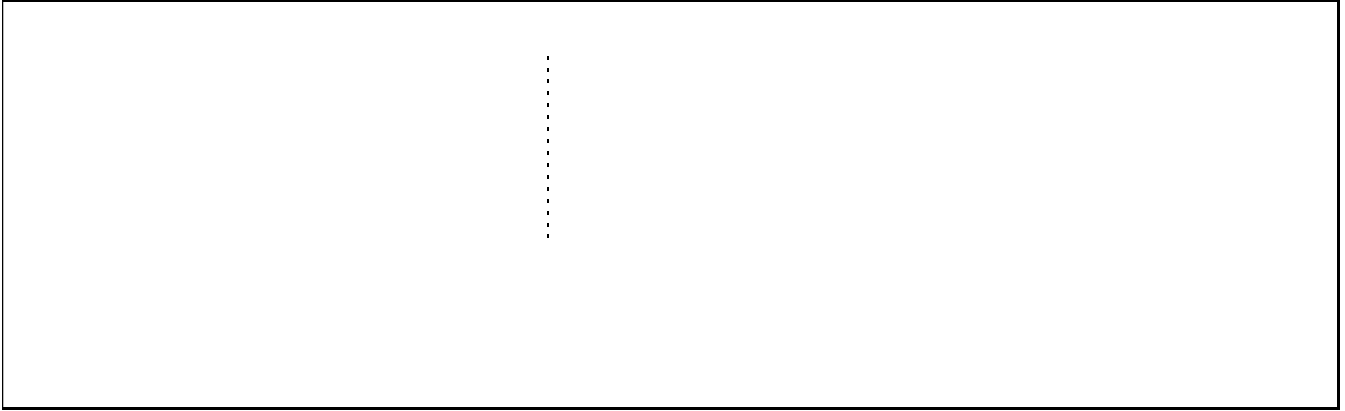
Please examine your results to determine areas of strength and opportunities for improvement. Areas of strength can be identified by large percentages of parents who "Strongly Agree" or "Agree" with a statement. Opportunities for improvement can be identified by large percentages of

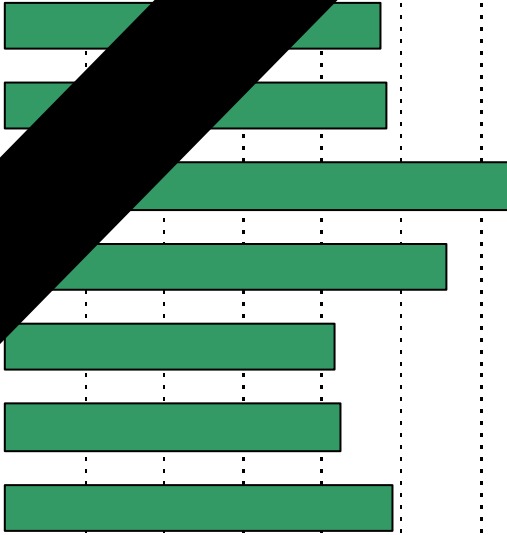
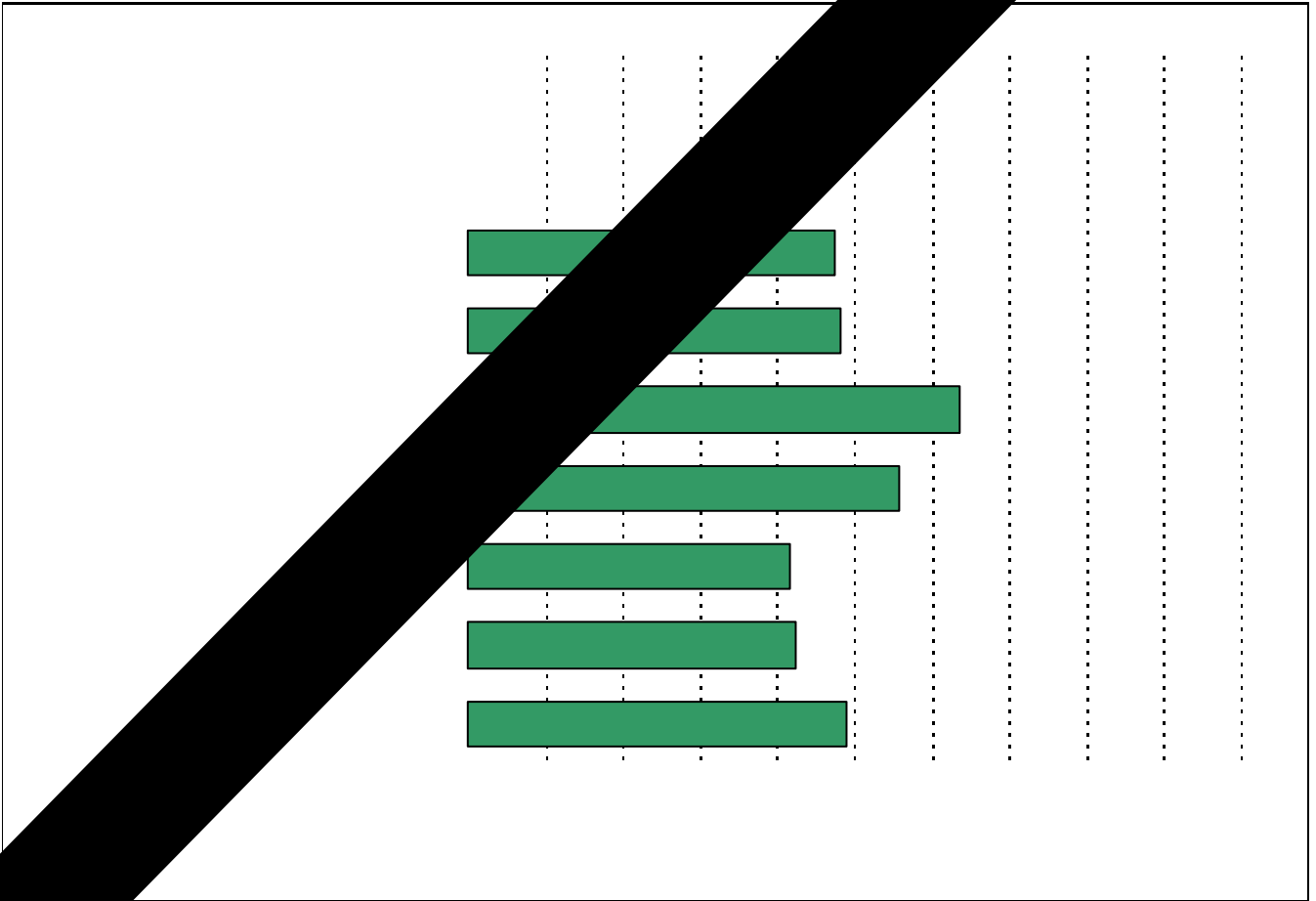
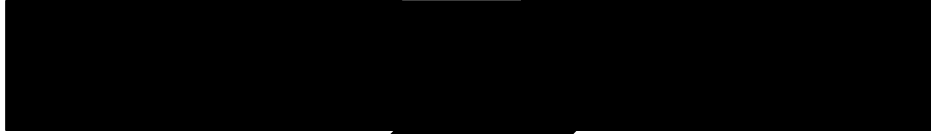
5. The following school staff treat me with courtesy and respect.



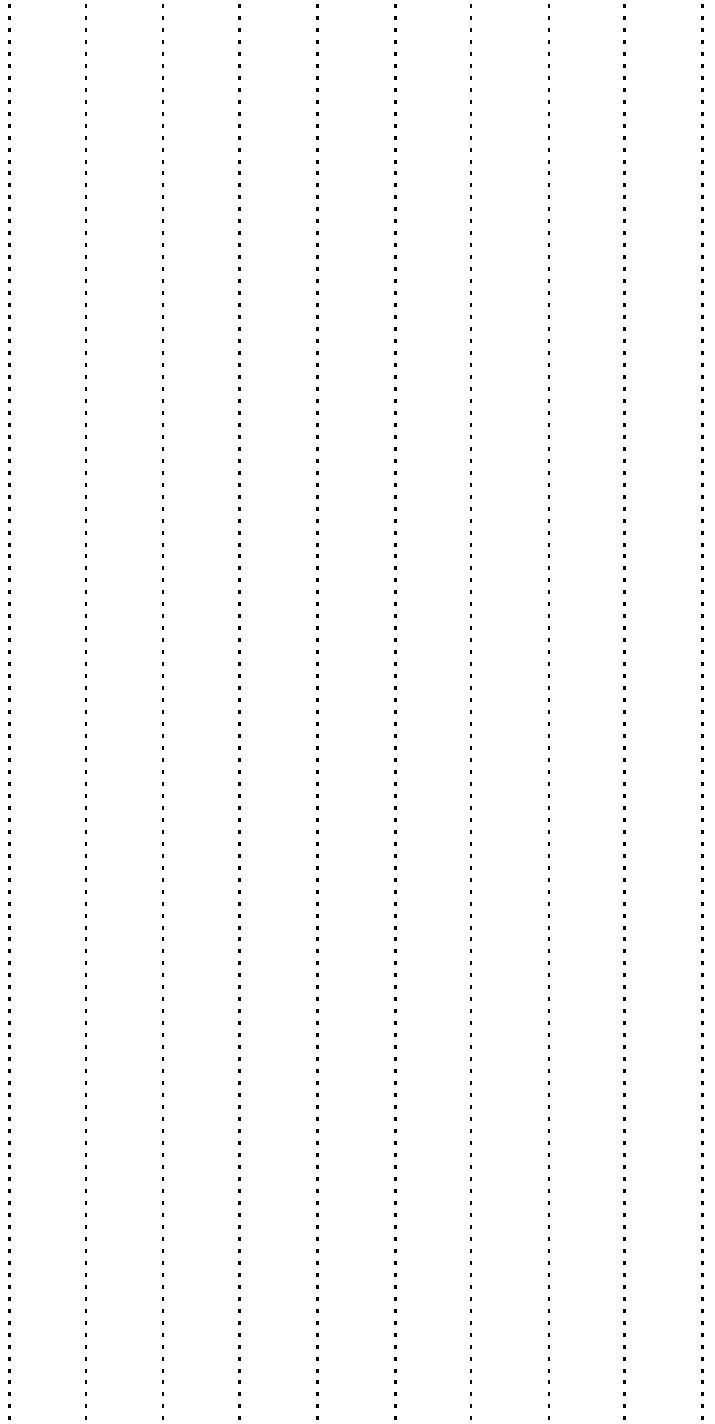


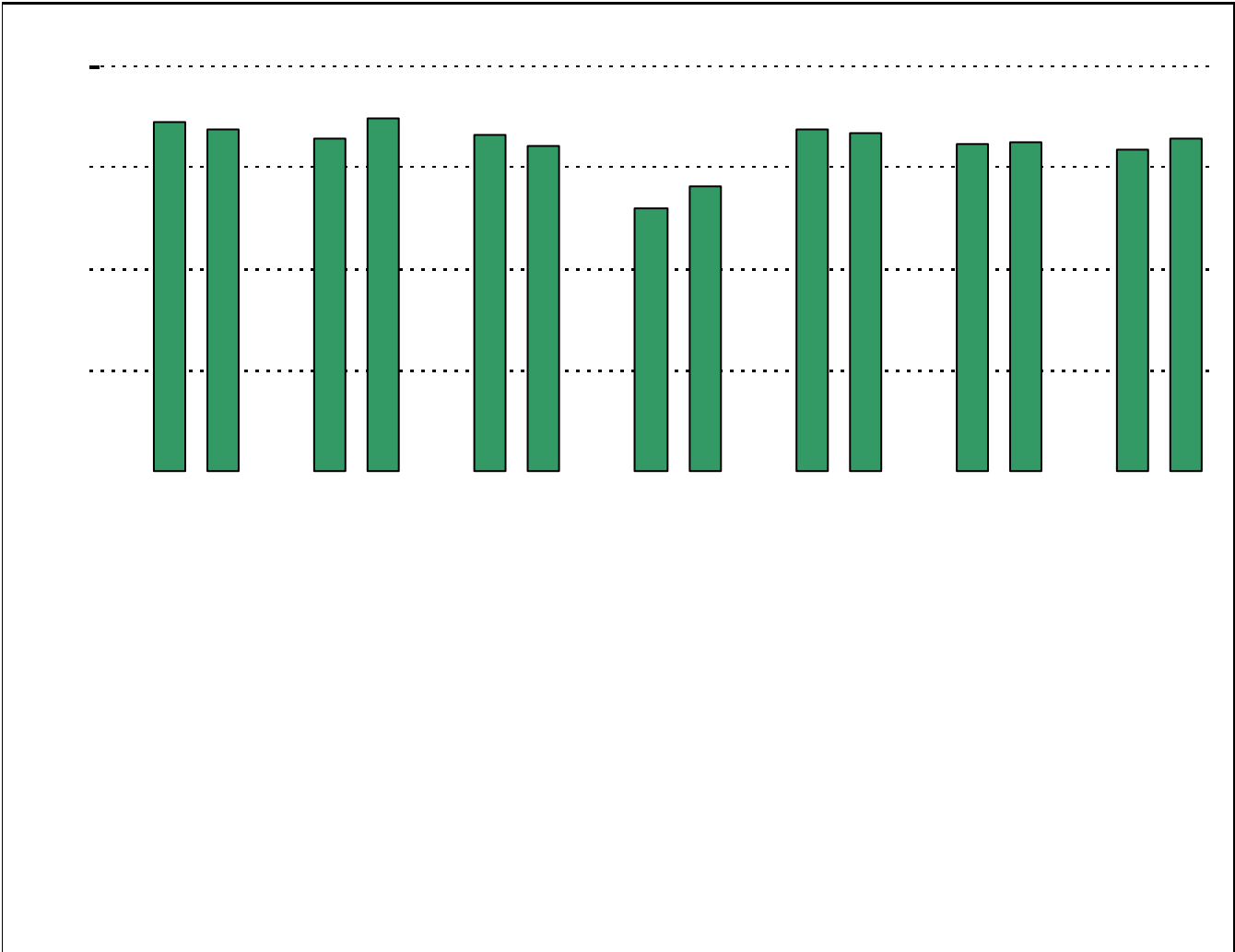






**Required
curriculum**





* Item(s) #17, #18, #19 added to the survey in 2006

