



2006-2007 AISD Parent Survey Results

Zavala Elementary School

The following report contains the results of the 2006-2007 AISD Parent Survey for your campus and all AISD schools at your level. The first section of this report provides a comparison of the campus demographics and the demographics reported by parents who responded to the survey from your campus. The next section describes the percentages of parents selecting specific responses for each survey item, and the final section indicates the actual number of parents who selected each response option. Campus survey results should be examined for areas of strength and opportunities for improvement. Results for all AISD schools

How many parents responded to the survey in 2005-2006 and 2006-2007, and how does this compare to the number of students in the population each year?

	Campus	District EL	District MS	District HS
	85			
	461			
	80			
	490			

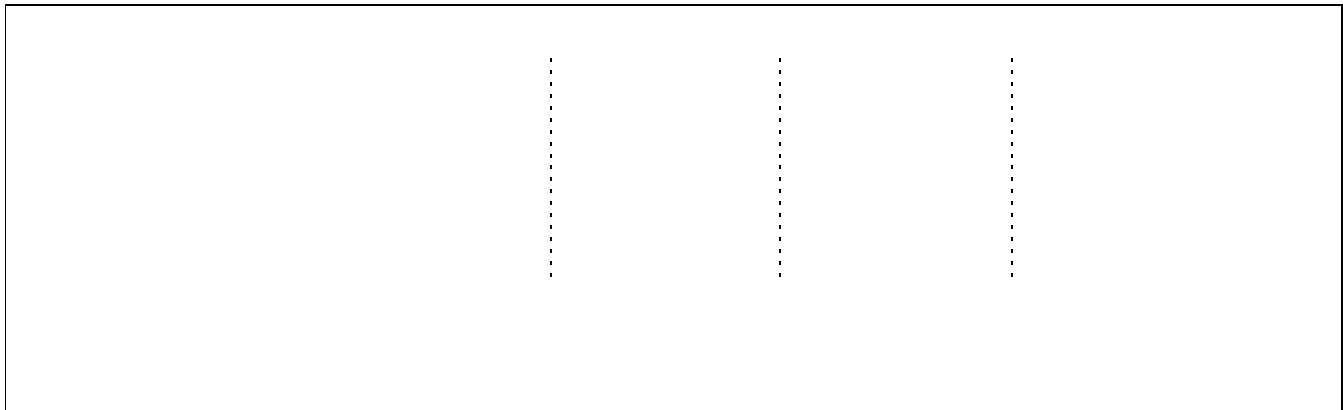
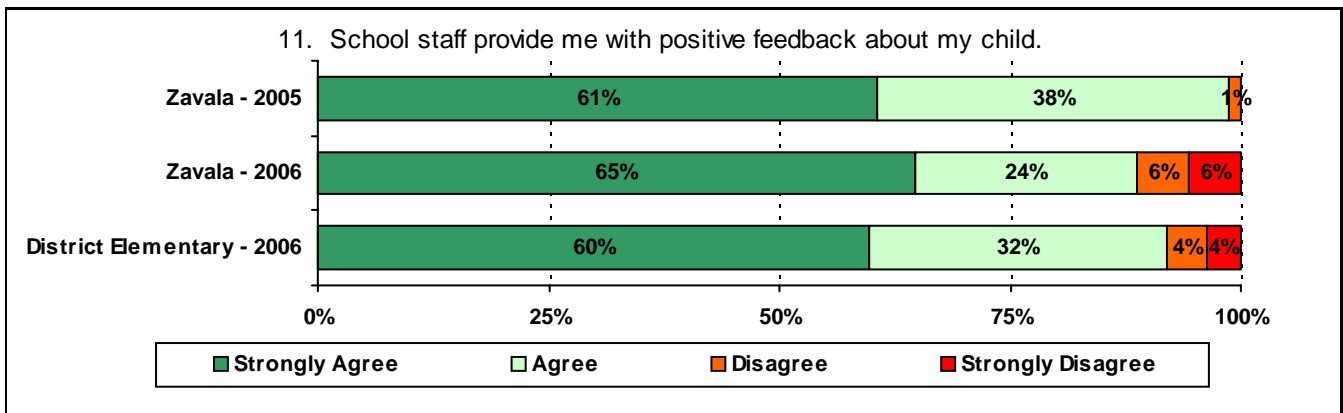
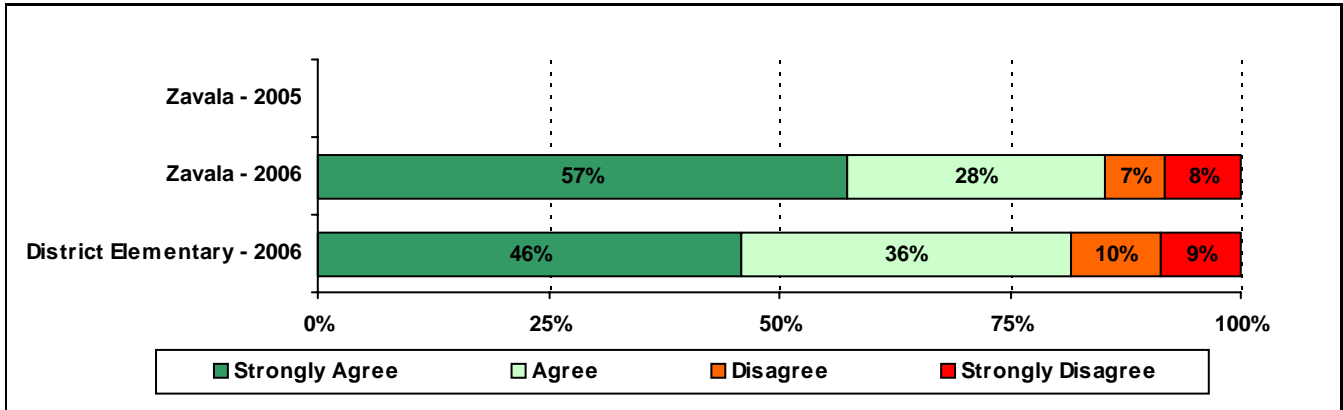
What did parents report as their child's ethnicity, and how does this compare to the ethnic distribution of the student population?

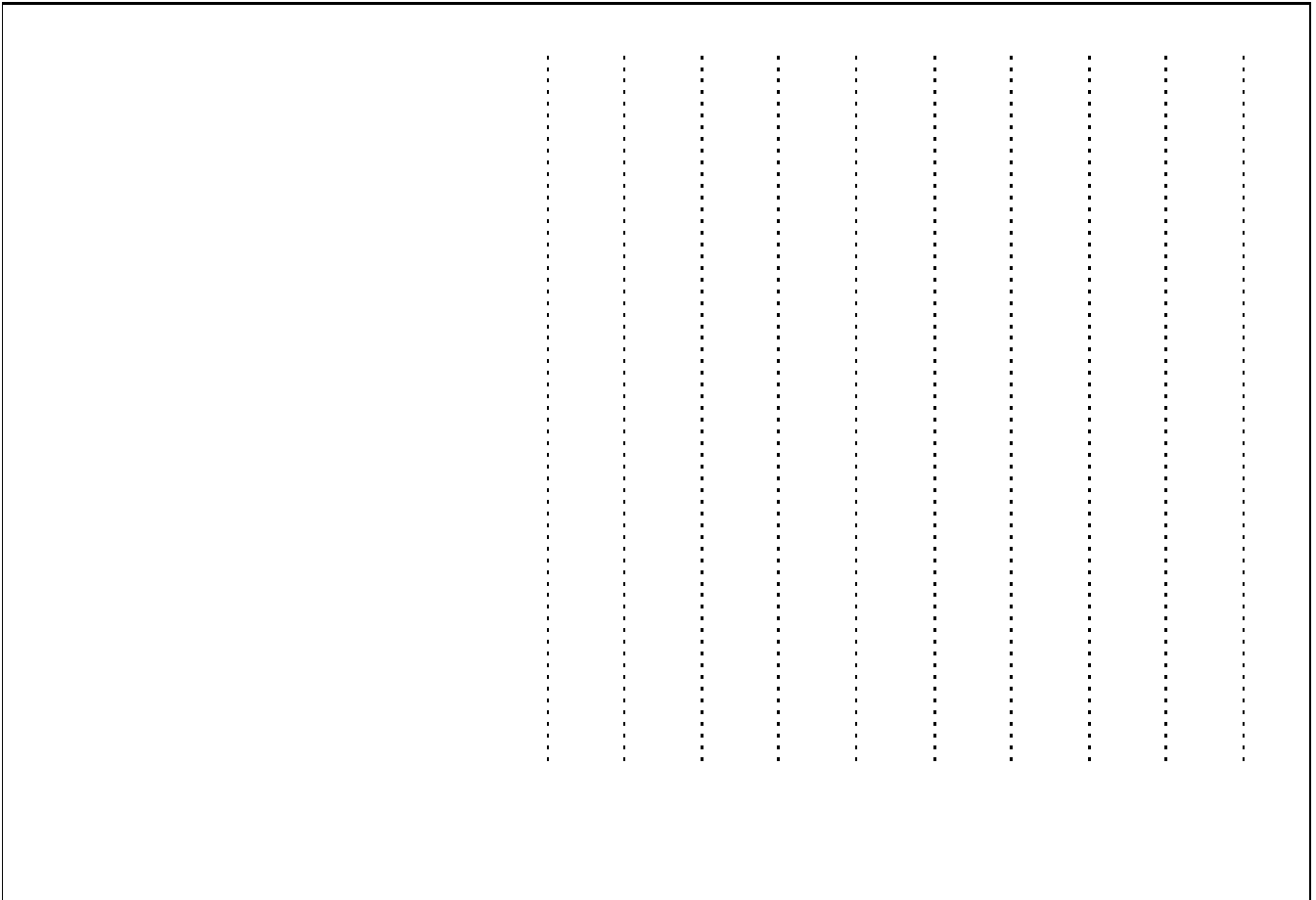
Ethnicity	% of Students, as Reported by Campus Parent Respondents	% of Students in Campus Population
Asian	7.6%	0.2%
Hispanic	89.4%	86.7%
Native American	0.0%	0.2%
White	3.0%	1.0%

Grade	% of Students, as Reported by Campus Parent Respondents	% of Students in Campus Population
EC	0.0%	2.9%
PK	2.9%	10.4%
K	11.8%	15.9%
1st	13.2%	13.7%
2nd	20.6%	12.0%
3rd	30.9%	11.4%
4th	8.8%	12.4%
5th	7.4%	12.2%
6th	4.4%	9.0%

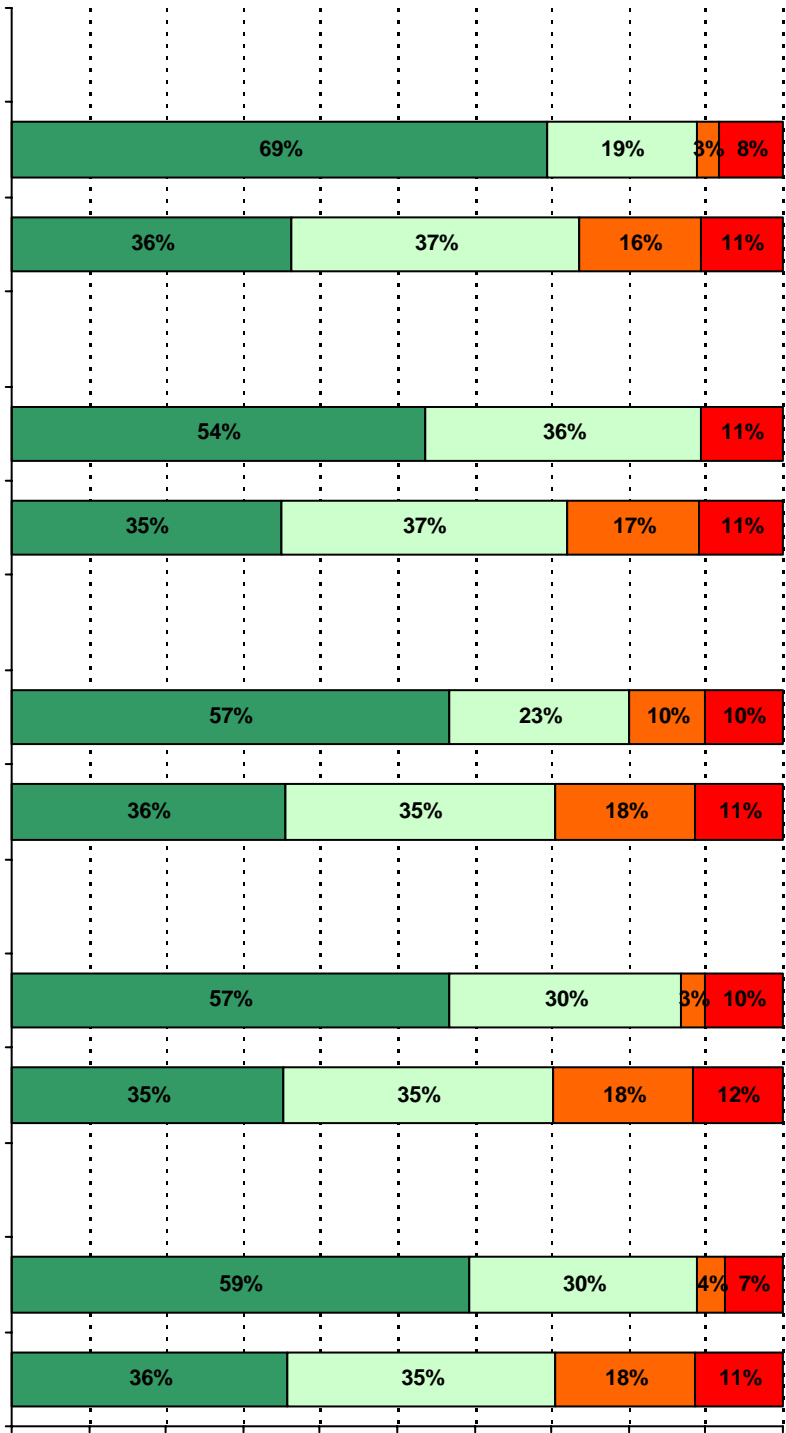
USING THE RESULTS OF THE AISD PARENT SURVEY

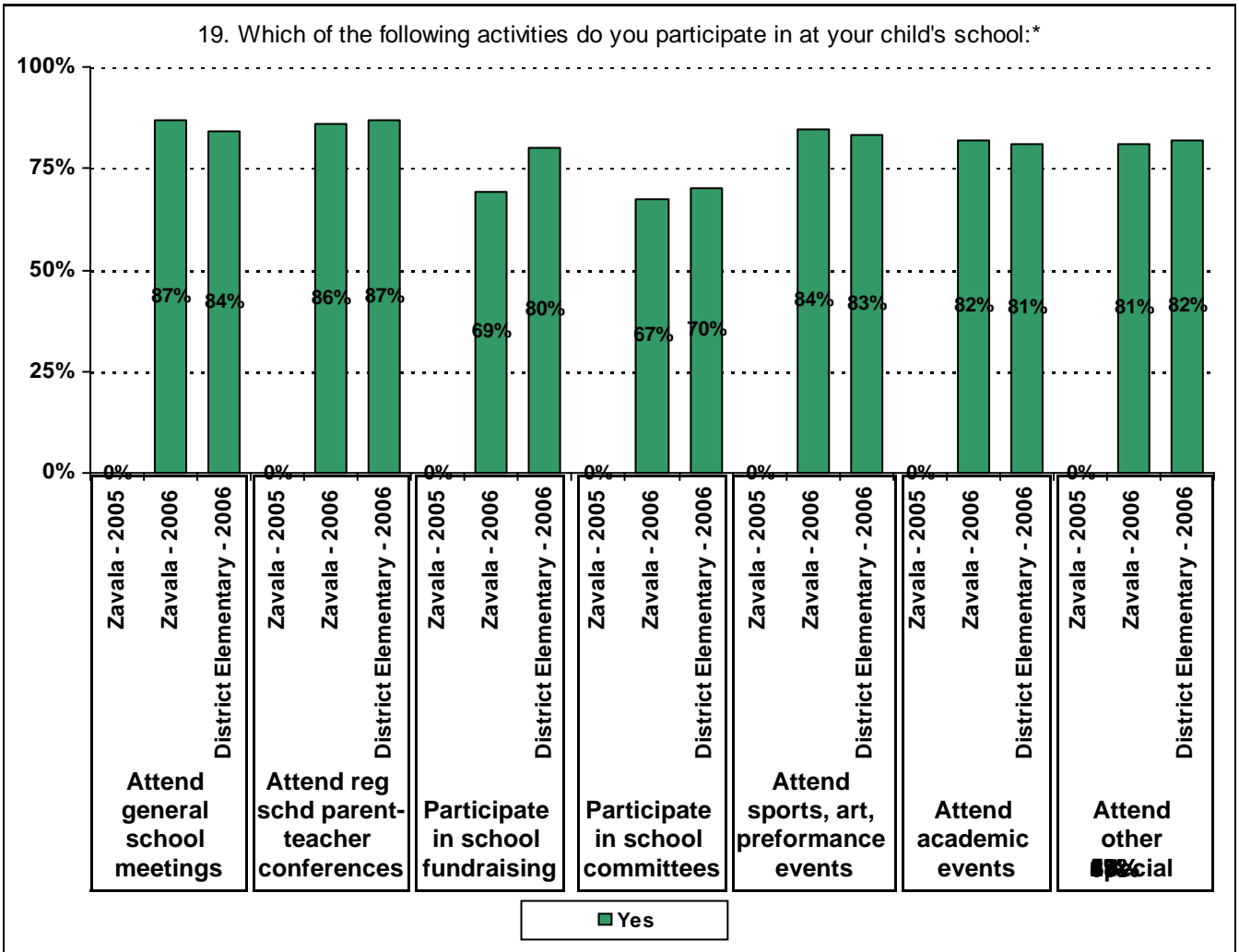
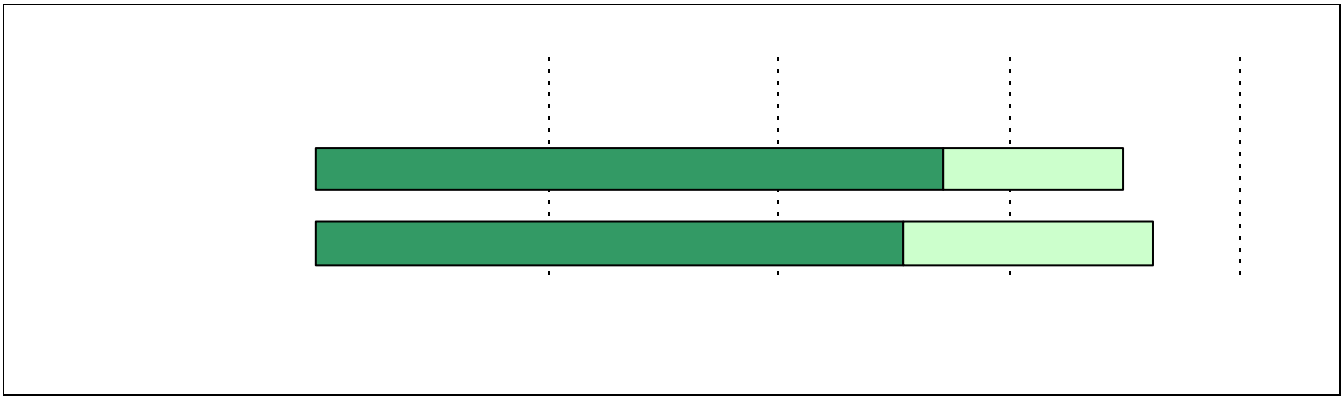
A rectangular box with a solid black border, containing four horizontal dotted lines for writing. The lines are evenly spaced and extend across most of the width of the box.





**Required
curriculum**





* Item(s) #17, #18, #19 added to the survey in 2006

Number of Zavala Elementary School Parent Responses, by Response Option
(Continued)

		Strongly Agree	Agree	Disagree	Strongly Disagree	Don't Know/NA
13a.	n = 73	46	17	3	4	3
13b.	n = 69	36	22	2	5	4
13c.	n = 64	33	15	4	5	7
14a.	n = 75	32	21	5	5	12
14b.	n = 72	32	21	8	3	8
14c.	n = 70	31	23	4	3	9
15a.	n = 76	52	15	4	5	0
15b.	n = 70	42	16	3	5	4
15c.	n = 67	40	17	3	4	3
15d.	n = 67	36	16	3	4	8
15e.	n = 68	46	16	2	4	0
16a.	n = 71	25	7	1	3	35
16b.	n = 65	15	10	0	3	37
16c.	n = 66	17	7	3	3	36
16d.	n = 64	17	9	1	3	34
16e.	n = 64	16	8	1	2	37
17.	n = 76	49	14	3	6	4
18.	n = 72	50	14	2	6	0
		Yes	No			
19a.	n = 73	59	14			
19b.	n = 69	55	14			
19c.	n = 65	34	31			
19d.	n = 70	37	33			
19e.	n = 69	49	20			
19f.	n = 71	41	31			
19g.	n = 71	51	20			
20.	n = 80	<p><i>Item 20 did not use the "Strongly Agree" to "Strongly Disagree" scale. Numbers below reflect the number of parents selecting each goal. These numbers will not sum to the total number of item respondents because parents may select multiple goals.</i></p>				
		High School diploma	Certificate/ Associates degree	Bachelors degree	Graduate/ Professional degree	Military service
		61	23	43	34	9