



2006-2007 AISD Parent Survey Results

Wooten Elementary School

The following report contains the results of the 2006-2007 AISD Parent Survey for your campus and all AISD schools at your level. The first section of this report provides a comparison of the campus demographics and the demographics reported by parents who responded to the survey from your campus. The next section describes the percentages of

	164 597 <i>27.5%</i>
	234 626 <i>37.4%</i>

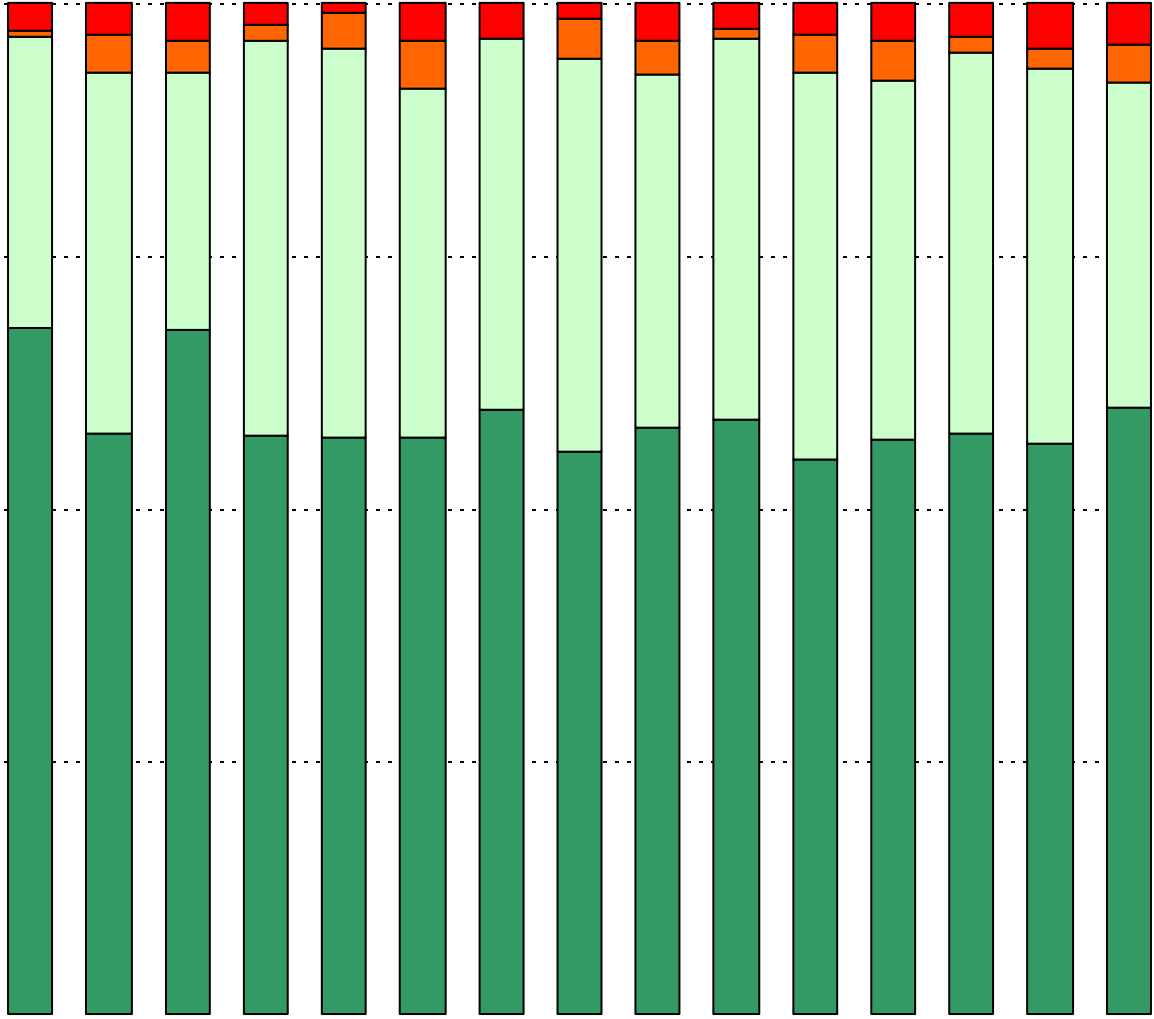
	9.8%	
	1.0%	1.1%
	81.3%	87.5%
	3.1%	0.2%
	4.7%	4.2%

	0.5%	0.8%
	19.1%	15.5%
	20.9%	21.2%
	17.7%	15.5%
	12.3%	11.5%
	11.4%	13.1%
	5.0%	12.3%
	13.2%	10.1%
	N/A	N/A

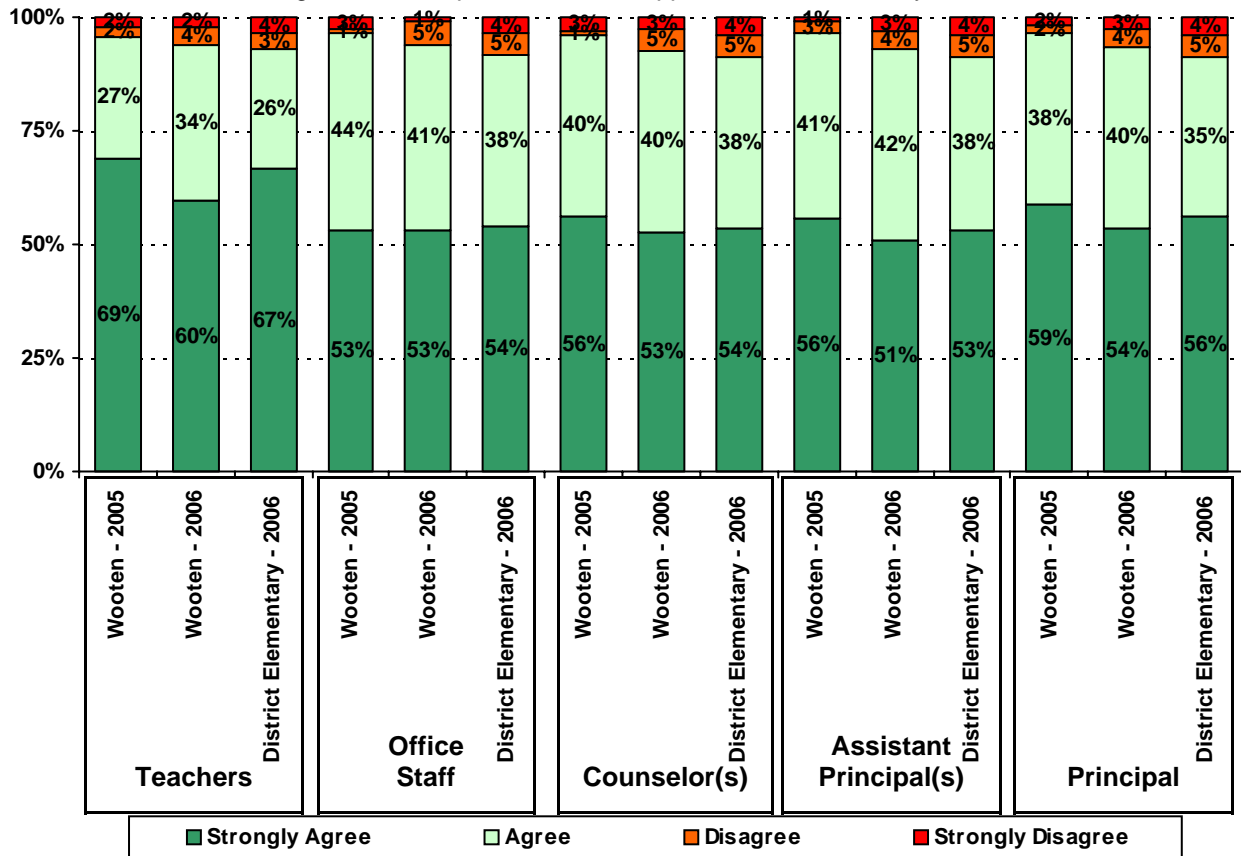
Note: Student population data are based on Fall PEIMS data submitted by the district to TEA, and may differ from the official AEIS report.

Each survey item is presented below, followed by a bar graph containing your school’s results for two years and this year’s results for all campuses at your level. You will be able to identify areas in which your school’s results have changed over time, and you will be able to compare the responses of your school’s parents to those of parents at your level district-wide.

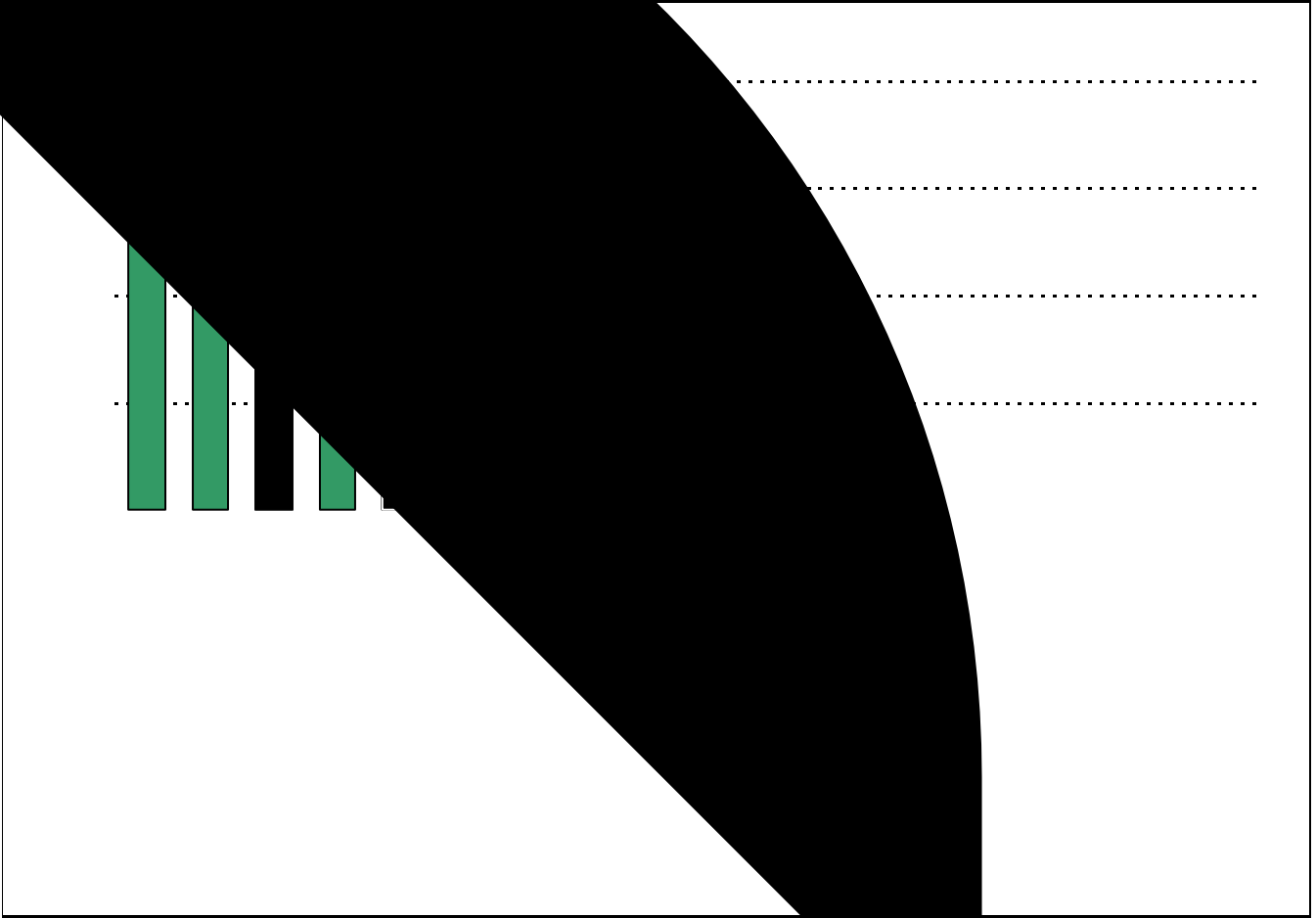
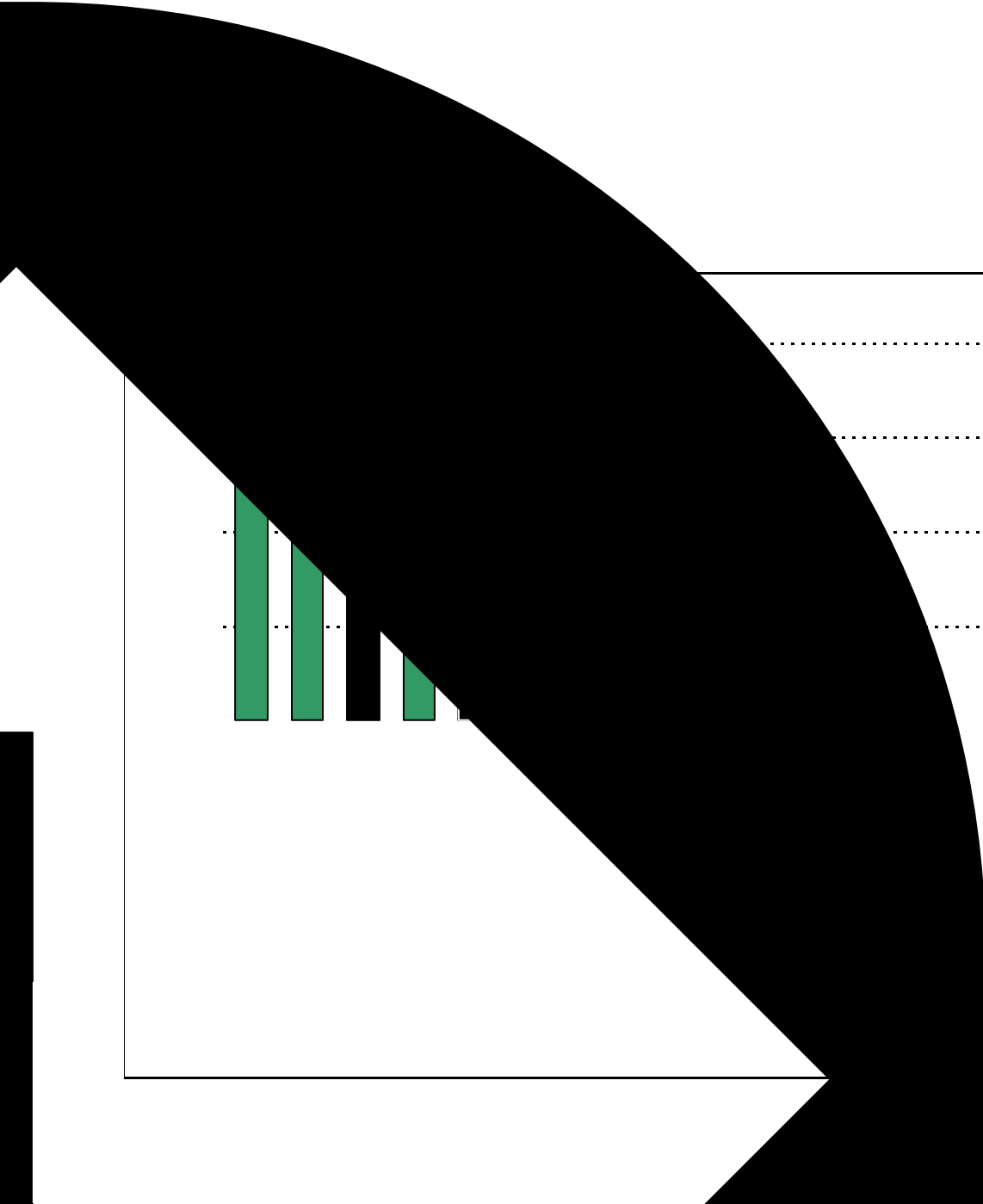
Please examine your results to determine areas of strength and opportunities for improvement. Areas of strength can be identified by large percentages of parents who “Strongly Agree” or “Agree” with a statement. Opportunities for improvement can be identified by large percentages of parents who “Disagree” or “Strongly Disagree” with a statement. In addition, please look for patterns in which one staff category consistently receives more positive or negative responses than other staff categories. This will help you to identify opportunities for praise and areas in which training may be necessary. District responses for all schools at your level are also provided for comparison with 2006-2007 responses from your school. If your campus percentages are very

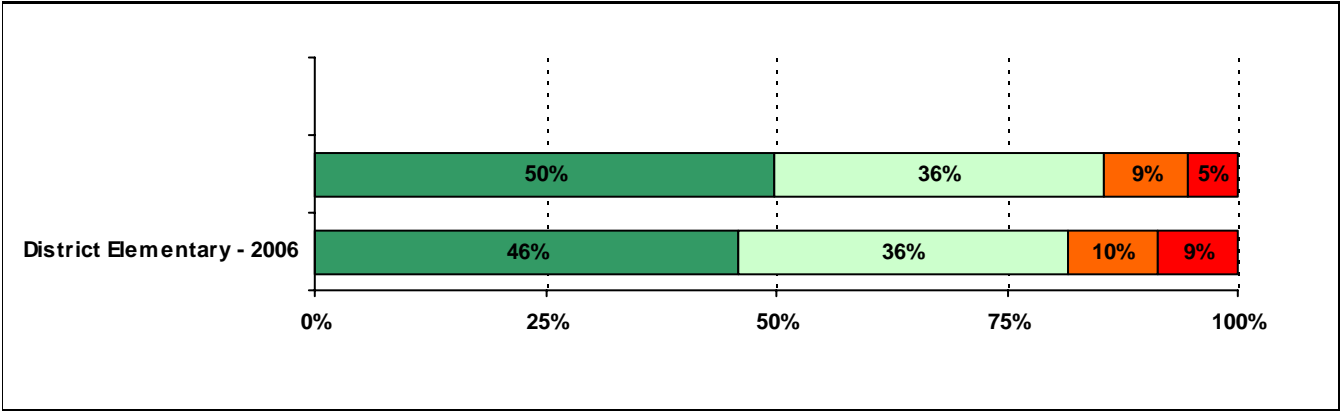


6. The following school staff provide me with opportunities for two-way communication.



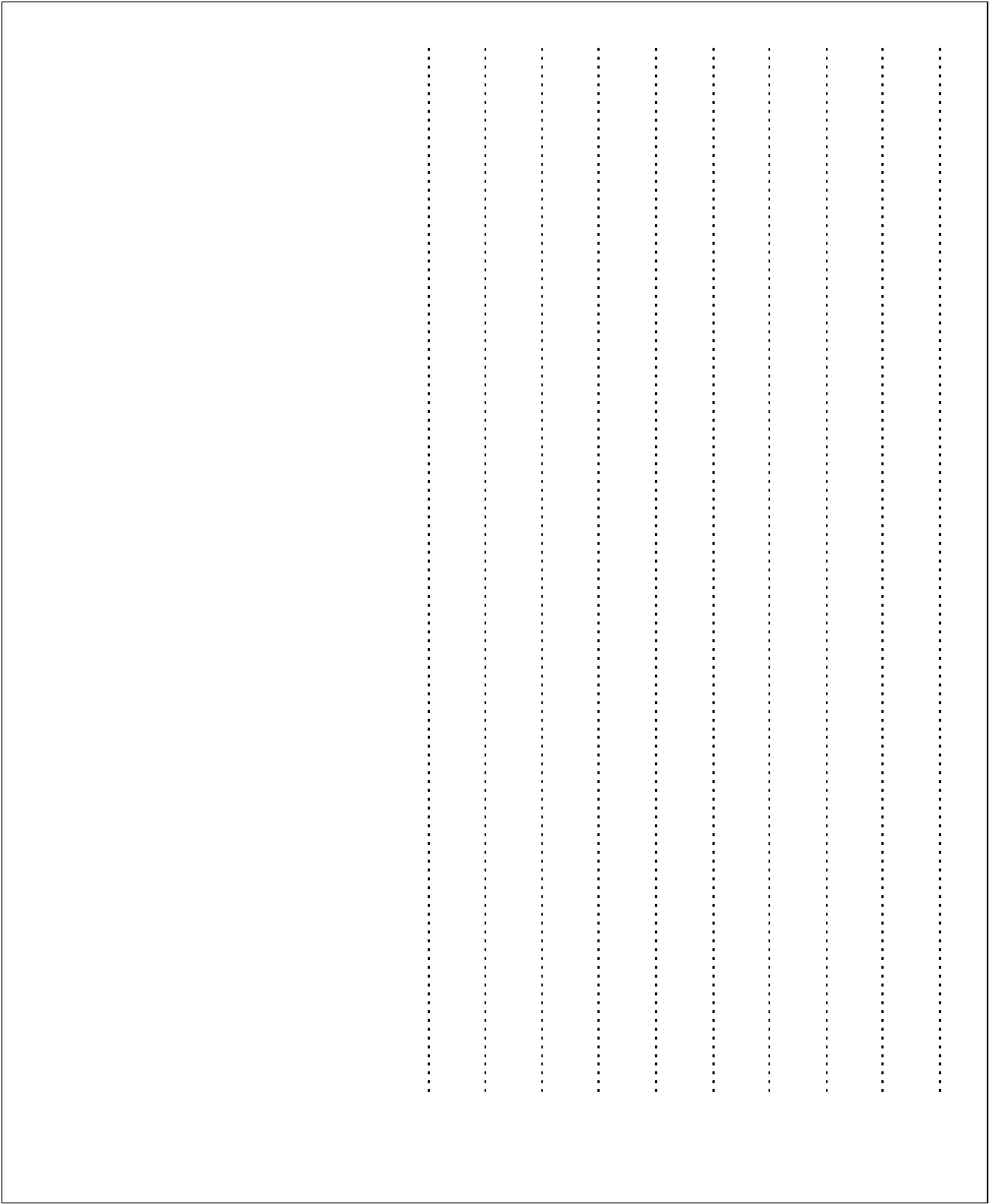
.....





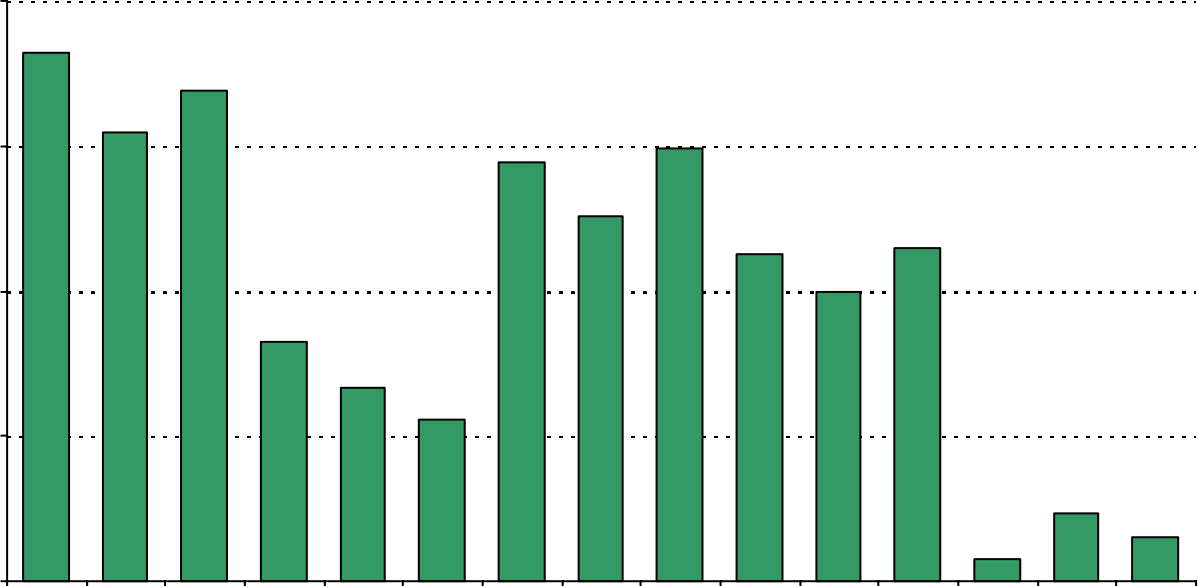


**Required
curriculum**

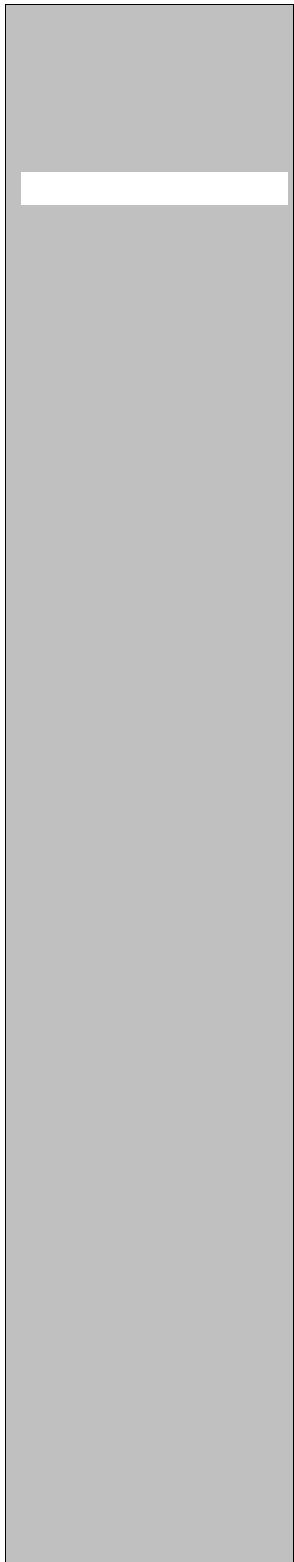




20. My goals for my child include the following plans:



Number of Wooten Elementary School Parent Responses, by Response Option



96	71	7	5	18
		7	6	12
				21
	77	7	2	5
124	77	8	7	0
96	71	7	5	18
93	77	7	6	12
93	71	8	5	21
100	77	10	2	14
126	72	8	5	9
95	68	5	6	24
82	68	7	6	26
82	58	7	6	35
87	67	7	6	23
117	70	4	7	8
88	59	10	6	30
80	59	13	5	31
79	59	11	5	36
79	65	12	4	32
112	70	8	6	15
108	67	5	4	13
104	68	4	3	16
98	72	7	3	16
107	72	5	4	9
125	72	6	9	9

