



2006-2007 AISD Parent Survey Results

Williams Elementary School

The following report contains the results of the 2006-2007 AISD Parent Survey for your campus and all AISD schools at your level. The first section of this report provides a comparison of the campus demographics and the demographics reported by parents who responded to the survey from your campus. The next section describes the percentages of

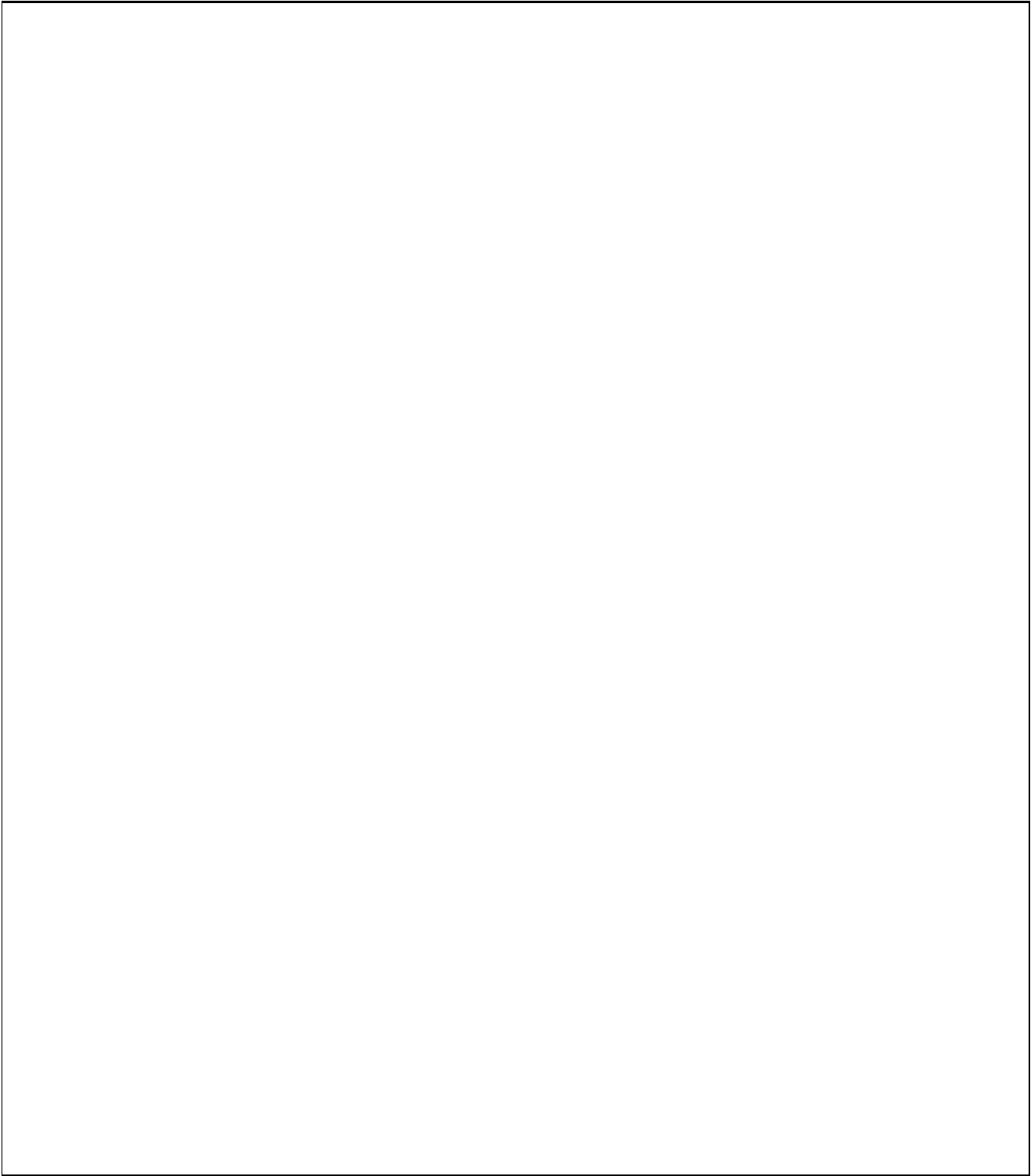
How many parents responded to the survey in 2005-2006 and 2006-2007, and how does this compare to the number of students in the population each year?

	Campus	District EL	District MS	District HS
	224			
	627			
	35.7%			
	178			
	607			
	29.3%			

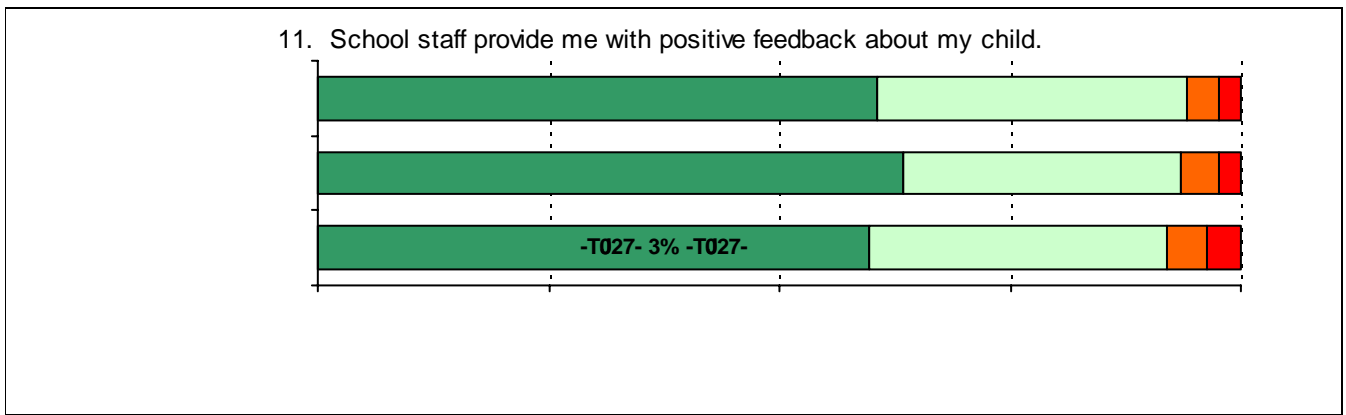
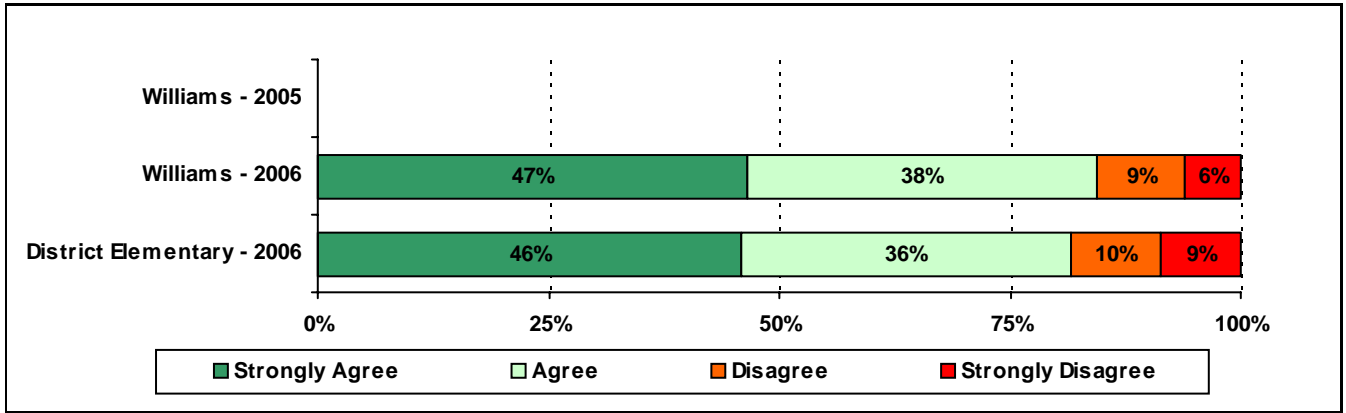
What did parents report as their child's ethnicity, and how does this compare to the ethnic distribution of the student population?

Ethnicity	% of Students, as Reported by Campus Parent Respondents	% of Students in Campus Population
Asian	4.6%	0.5%
Hispanic	77.5%	79.4%
Native American	0.0%	0.0%
White	17.2%	13.8%

U

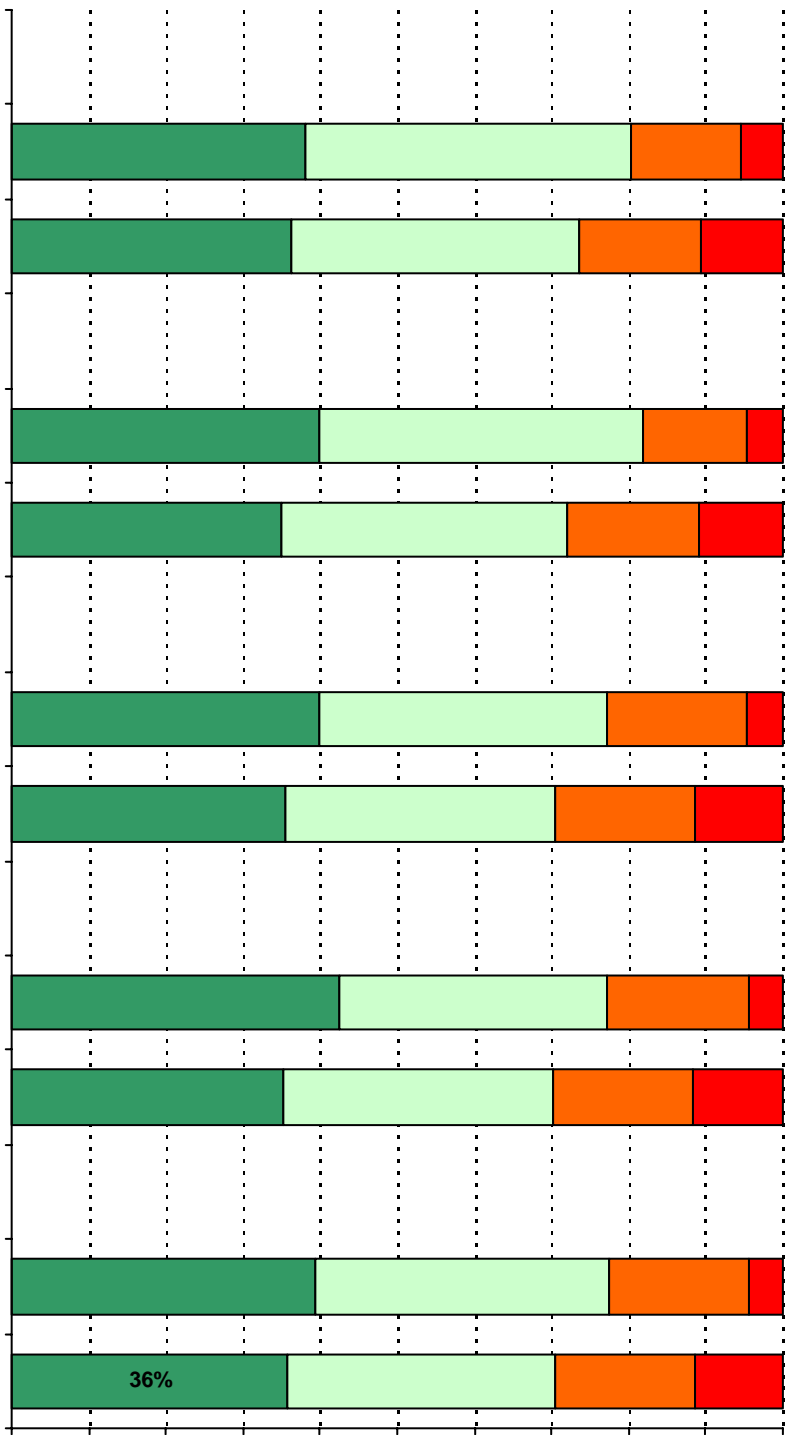


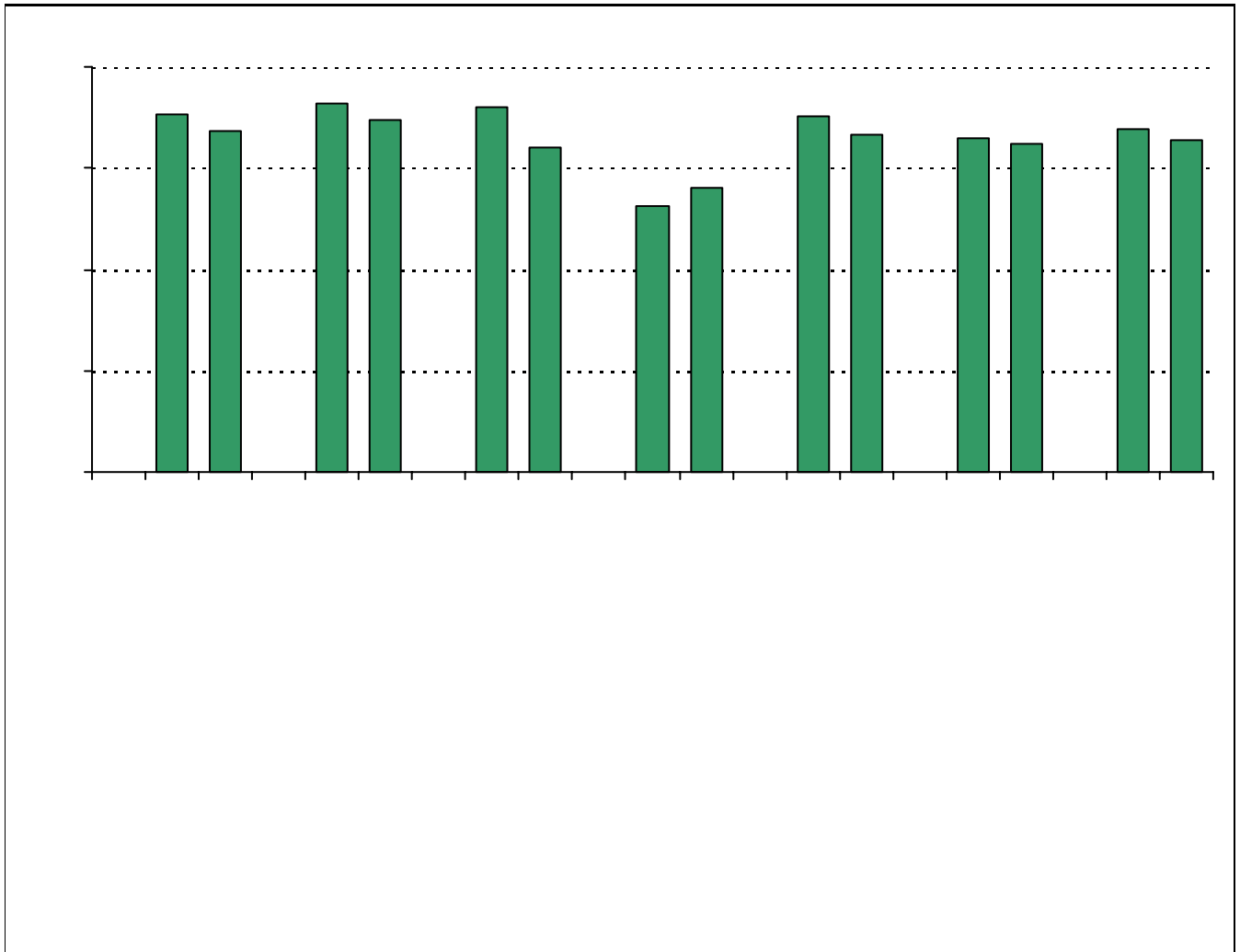




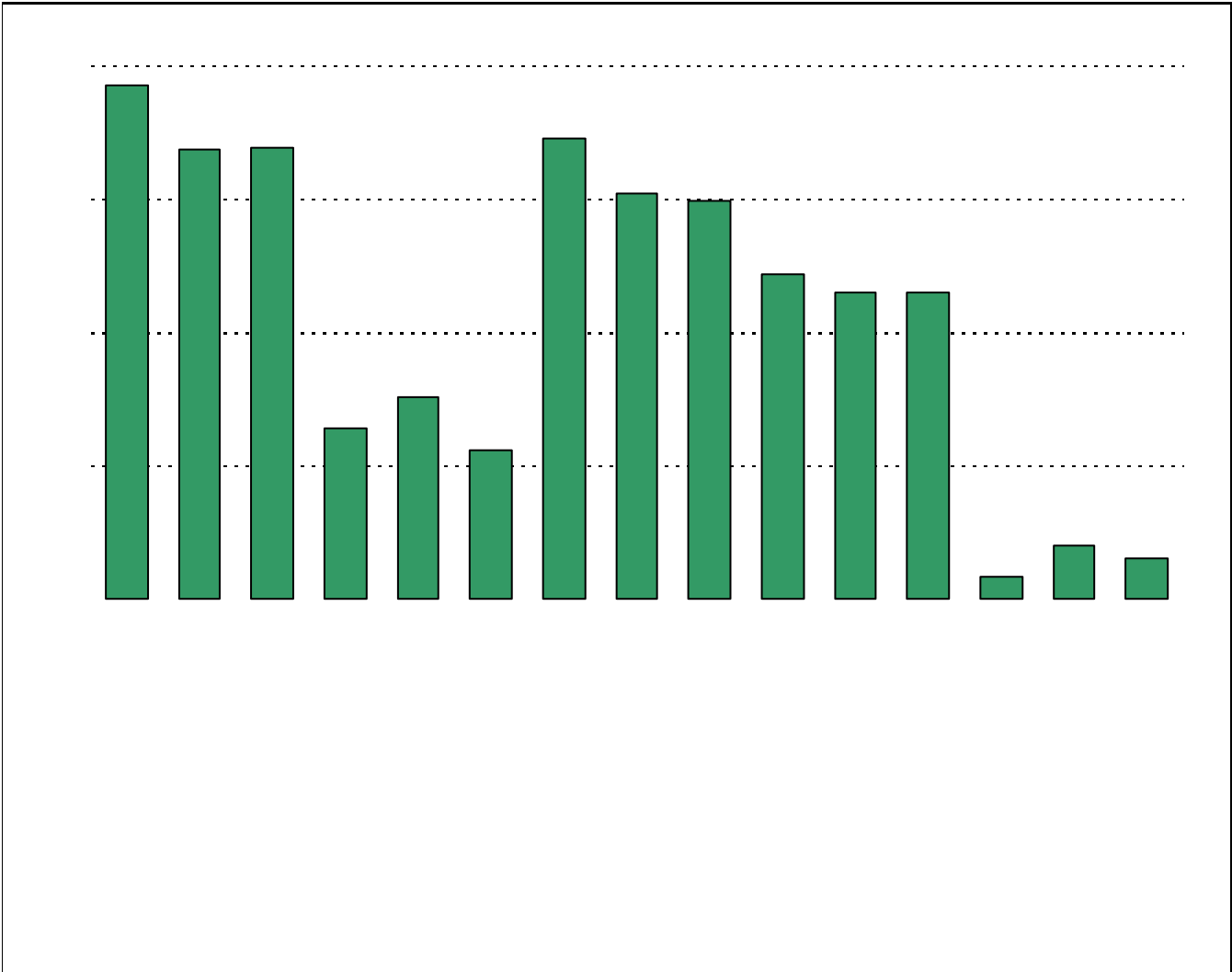


**Required
curriculum**





* Item(s) #17, #18, #19 added to the survey in 2006



Item Response Details

		Strongly Agree	Agree	Disagree	Strongly Disagree	Don't Know/NA
3a.	n = 168	105	39	3	6	15
3b.	n = 164	90	47	3	4	20
3c.	n = 159	75	36	6	5	37
3d.	n = 162	93	55	7	3	4
3e.	n = 166	115	41	7	2	1

Number of Williams Elementary School Parent Responses, by Response Option
(Continued)

		Strongly Agree	Agree	Disagree	Strongly Disagree	Don't Know/NA
13a.	n = 167	111	46	3	5	2
13b.	n = 161	105	42	7	4	3
13c.	n = 165	101	48	6	3	7
14a.	n = 169	73	47	12	7	30
14b.	n = 170	105	51	6	3	5
14c.	n = 165	68	53	10	7	27
15a.	n = 173	111	49	5	7	1
15b.	n = 168	89	52	9	6	12
15c.	n = 166	90	43	6	6	21
15d.	n = 166	94	34	13	5	20
15e.	n = 167	109	47	5	5	1
16a.	n = 163	35	39	13	5	71
20.	n = 178	<p><i>Item 20 did not use the "Strongly Agree" to "Strongly Disagree" scale. Numbers below reflect the number of parents selecting each goal. These numbers will not sum to the total number of item respondents because parents may select multiple goals.</i></p>				
		High School diploma	Certificate/ Associates degree	Bachelors degree	Graduate/ Professional degree	Military service
		150	67	135	102	18