

Survey Report

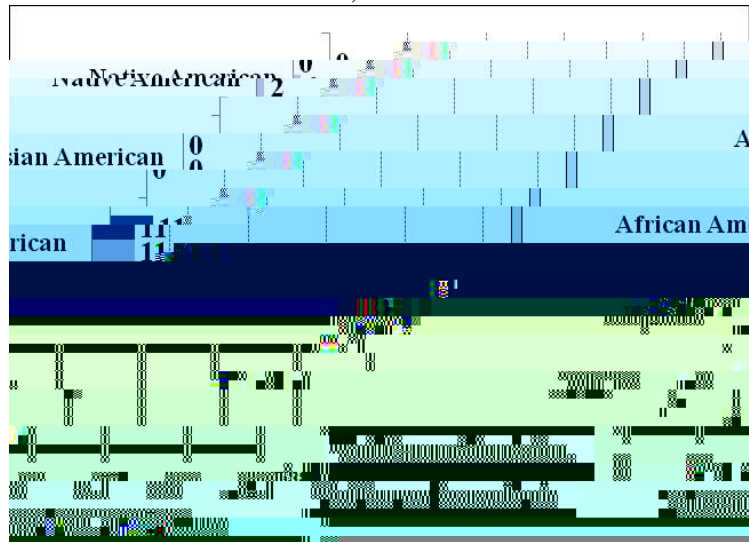
In Spring 2010, 290 students returned surveys for Webb, representing 51% of eligible students from Webb (compared to the district Middle School response rate, 72%). The table below shows the total number and percentage of students surveyed from each eligible grade at Webb in 2009-2010.

The Figure below compares the percentage of eligible students at Webb (dark purple) to the percentage of students at Webb who completed the survey (light purple), by ethnicity.

Table 1. Response Rate by Grade, 2009-2010

Grade	Number of Students	Response Rate (%)
6h	195	62%
7h	197	49%
8h	180	40%
Total	572	51%

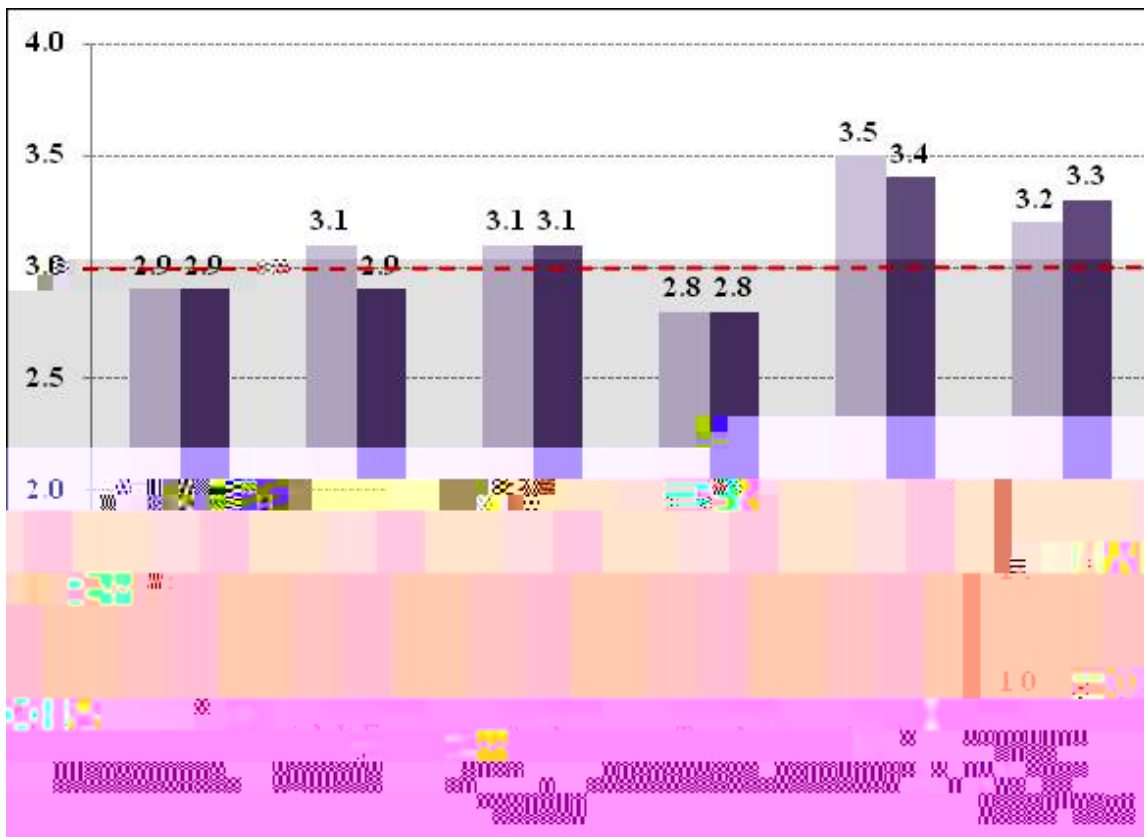
Percentage of Respondents and Students by Ethnicity for Webb, 2009-2010



Survey results for Webb for the 2009-2010 school year are presented on the next page. Please note the green and red text boxes that highlight specific areas in which Webb excels, as well as areas in which Webb can improve. The appendix provides more detailed information regarding Webb’s student climate survey results from 2007-2008 through 2009-2010. Please review the individual items on each subscale with particular attention to how Webb’s average ratings have changed or remained consistent over time. Please note that some subscales have changed from previous years, making longitudinal comparisons inappropriate for some items and subscales. For items and subscales where longitudinal data are available, statistically meaningful changes are flagged with + or - symbols. Please share the results of this report with all campus staff and your Campus Advisory Council to inform campus improvement planning.

The graph below depicts Webb's average student climate survey ratings, compared with average ratings for students across all Middle Schools in 2009-2010. Scores over 3.0 are desirable, as indicated by the red dashed line. The first step in improving these characteristics is to examine the item-level scores for each area (see Appendix).

Student Climate Survey Subscales for Webb and all Middle Schools, 2009-2010



Note. The light purple bars represent 2009-2010 data for Webb and the dark purple bars represent 2009-2010 data for all Middle Schools.

Item	Year			Average
	2007-08	2008-09	2009-10	
9. I like to come to school.	n/a	n/a	2.8	2.8
21. I enjoy doing my schoolwork.	2.7	2.8	2.6	2.5
30. My homework helps me learn things I need to know.	3.1	3.1	3.1	3.0
33. My schoolwork makes me think about things in new ways.	3.0	3.0	3.0	2.8
35. I have fun learning in my classes.	2.8	3.0	2.8	2.7
38. My teachers connect what I am doing to my life outside the classroom.	n/a	2.8	2.8	2.7
Student Engagement average	n/a	n/a		2.8

Note: Response options range from 1 (strongly disagree) to 4 (strongly agree). It is desirable to have a response of at least 3.0. With the addition of item 9 in 2009-2010, subscale comparisons across years are no longer available.

IV

Item	IV			Average
	2007-08	2008-09	2009-10	
13. My teachers believe I can learn.	n/a	n/a	3.6	3.6
18. My teachers expect me to do my best work.	3.6	3.7	3.7	3.6
19. My teachers challenge me to do better.	3.4	3.5	3.4	3.3
24. My teachers believe I can do well in school.	n/a	n/a	3.6	3.5
27. My teachers show me how to know if my work is good.	3.3	3.2	3.3	3.1
Teacher Expectations average	n/a	n/a	3.5	3.4

Note: Response options range from 1 (strongly disagree) to 4 (strongly agree). It is desirable to have a response of at least 3.0. With the addition of items 13 and 24 in 2009-2010, subscale comparisons across years are no longer possible.

Item	IV			Average
	2007-08	2008-09	2009-10	
20. I can do even the hardest work if I try.	3.3	3.2	3.2	3.2
22. I feel/felt well prepared for TAKS.	3.2	3.3	3.0 -	3.3
23. I try hard to do my best work.	3.5	3.4	3.4	3.4
26. I feel successful in my schoolwork.	3.1	3.2	3.1	3.2
29. I can reach the goals I set for myself.	3.3	3.3	3.3	3.3
31. I know how I am doing in school.	3.4	3.3	3.3	3.3
Academic Self-Confidence average	3.3	3.3	3.2	3.3

Note: Response options range from 1 (strongly disagree) to 4 (strongly agree). It is desirable to have a response of at least 3.0.

Item	IV			Average
	2007-08	2008-09	2009-10	
8. There is at least one adult at my school who I would go to if I have a problem.	3.3	3.2	3.4	3.2
25. My teachers like to teach.	3.4	3.3	3.4	3.3

Note: Response options range from 1 (strongly disagree) to 4 (strongly agree). It is desirable to have a response of at least 3.0.



Schmitt, L., & Carney, D. (2008). *Austin ISD Board Level Reports*. Austin, TX: Austin Independent School District.



Meria Carstarphen, Ed.D.



William Caritj, M.Ed.



Holly Williams, Ph.D.



Lindsay M. Lamb, Ph.D.
Lisa N. T. Schmitt, Ph.D.



Mark Williams, President
Vincent Torres, M.S., Vice President
Lori Moya, Secretary
Cheryl Bradley
Annette LoVoi, M.A.
Christine Brister
Robert Schneider
Tamala Barksdale
Sam Guzman