

**How many parents responded to the survey in 2004-2005 and 2005-2006, and how does**

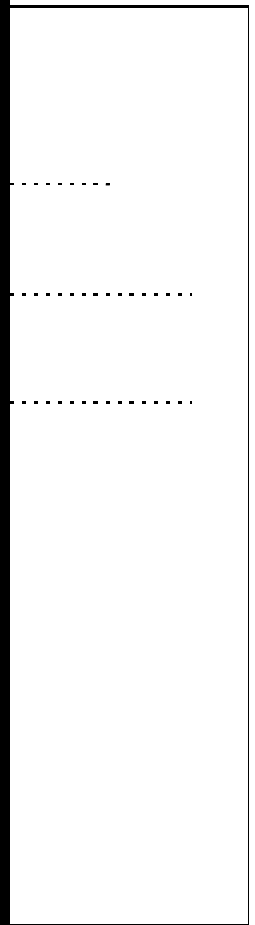
**What did parents report as their child's grade, and how does this compare to the grade level distribution of the student population?**

<b>Grade</b>	<b>% of Students, as Reported by Campus Parent Respondents</b>	<b>% of Students in Campus Population</b>
EC		
PK		
K		
1st		
2nd		
3rd		
4th		
5th		
6th		

**USING THE RESULTS OF THE AISD PARENT SURVEY**

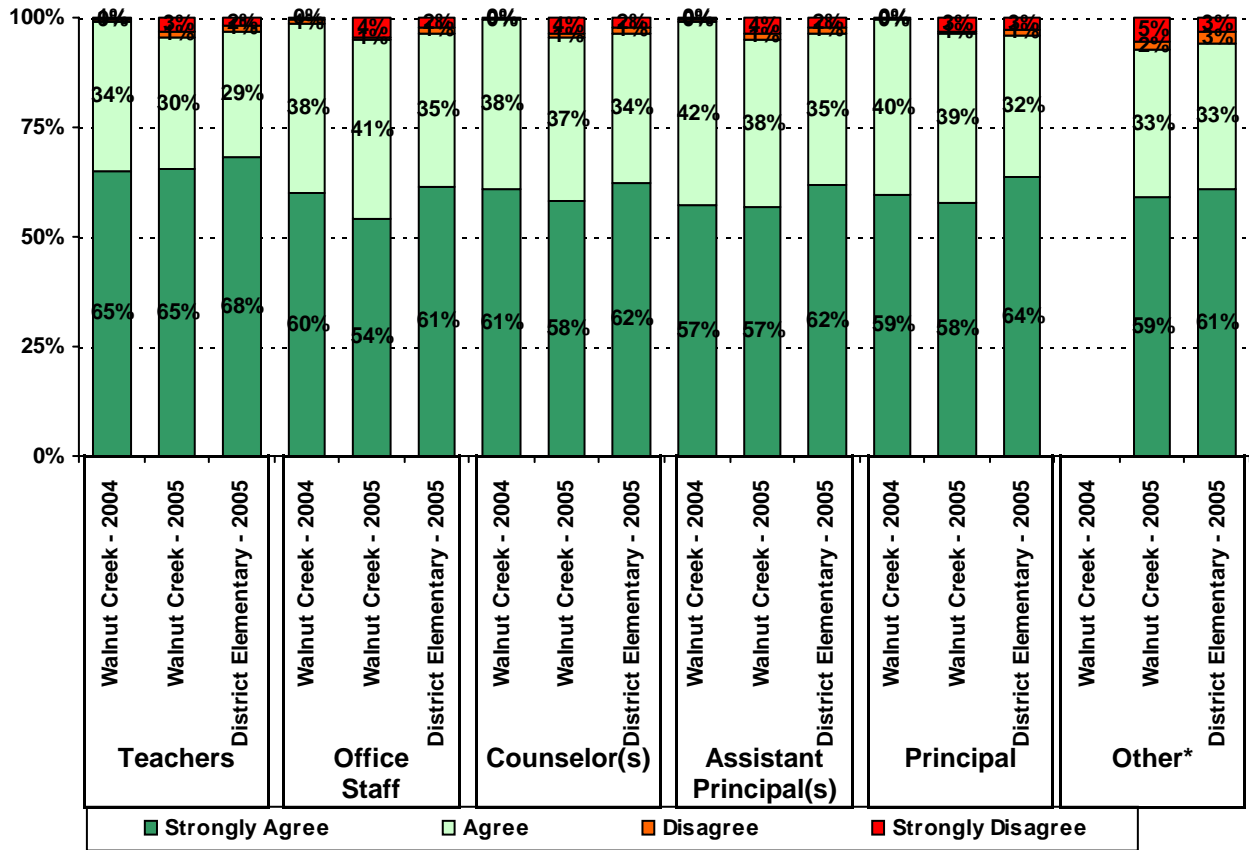
4

6



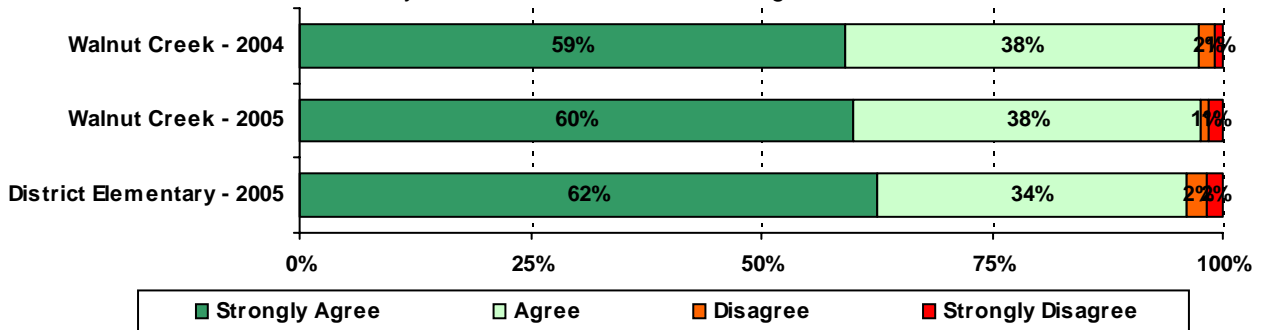


8. The following school staff treat my child fairly with respect to culture, gender, ethnicity, age, religion, and disability.

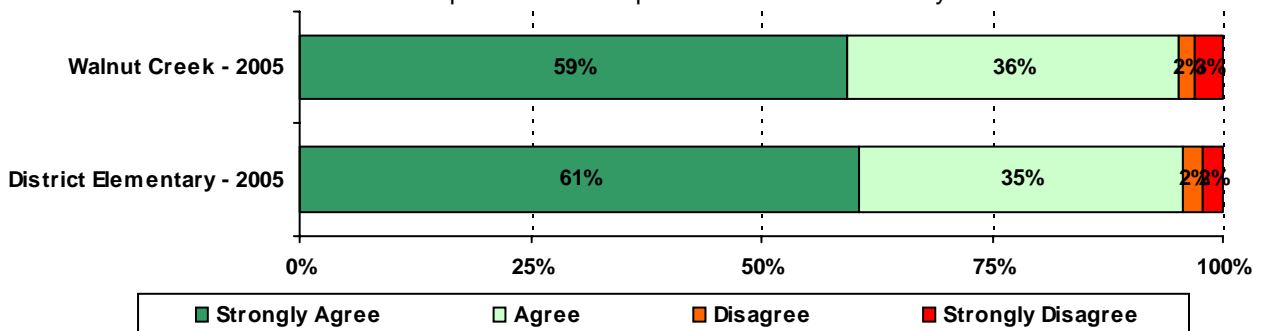


\* The "Other" category was added to the survey in 2005.

9. My child's school is a safe learning environment.



10. School staff provide me with positive feedback about my child.\*



\* Item 10 was added to the survey in 2005.

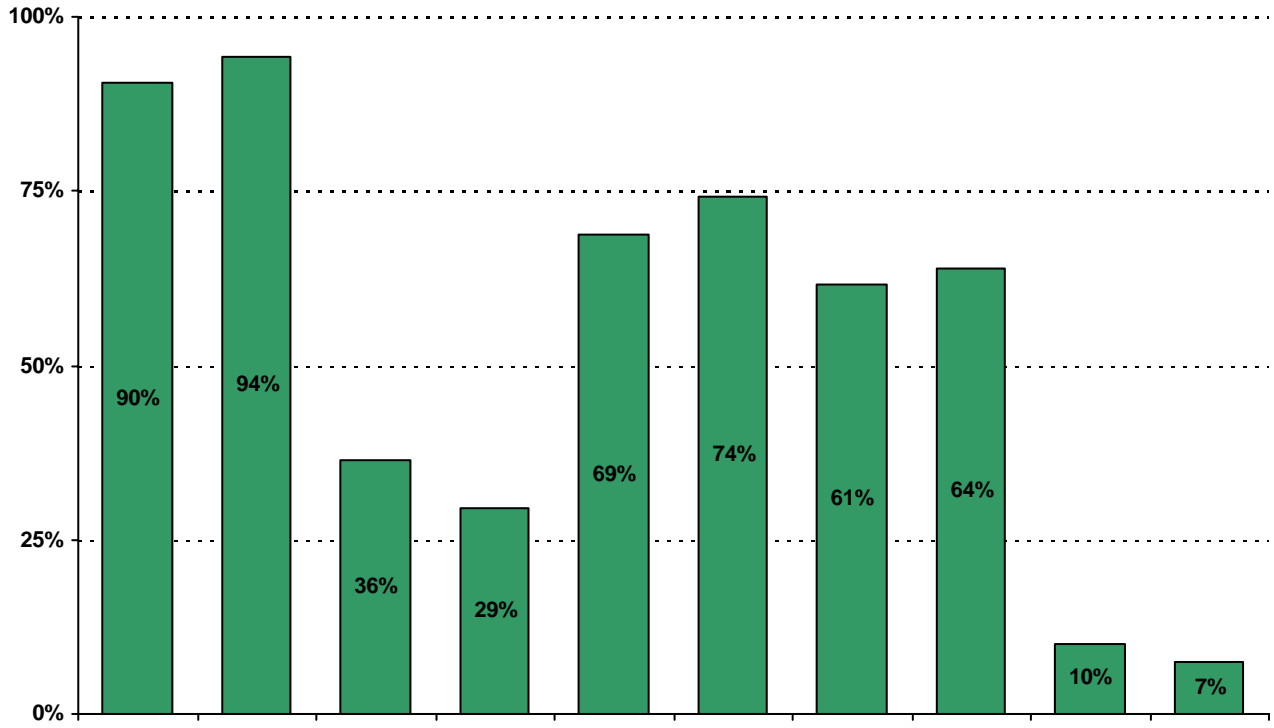
.....



**Required**



14. My goals for my child include the following plans\*:



## Item Response Details

		Strongly Agree	Agree	Disagree	Strongly Disagree	Don't Know/NA
4a.	n = 344					
4b.	n = 331					
4c.	n = 317					
4d.	n = 335					
4e.	n = 365					
5a.	n = 326					
5b.	n = 317					
5c.	n = 317					
5d.	n = 331					
5e.	n = 352					
6a.	n = 310					
6b.	n = 304					
6c.	n = 306					
6d.	n = 312					
6e.	n = 367					
7a.	n = 325					
7b.	n = 309					
7c.	n = 314					
7d.	n = 311					
7e.	n = 353					
8a.	n = 324					
8b.	n = 320					
8c.	n = 317					
8d.	n = 326					
8e.	n = 346					
8f.	n = 324					
9.	n = 365					
10.	n = 366					

		Strongly Agree	Agree	Disagree	Strongly Disagree	Don't Know/NA
11a.	n = 349					
11b.	n = 344					
11c.	n = 337					
11d.	n = 342					
11e.	n = 328					
11f.	n = 342					
11i.	n = 317					
12a.	n = 335					
12b.	n = 337					
12c.	n = 332					
12d.	n = 335					
13a.	n = 356					
13b.	n = 340					
13c.	n = 336					
13e.	n = 339					