

<i>Dimension and Subscale</i>	Travis Heights 03-04	Travis Heights 04-05	Travis Heights 05-06	All Elementary Schools 05-06
Behavioral Environment	2.80	2.71	2.81	3.04
<i>Peer Behavior</i>				
<i>Behavioral Expectations</i>				
9	3	8	3	
	8	9	3	4
	3.37	3.31	3.40	3.46
<i>Academic Self-Confidence</i>				

BEHAVIORAL ENVIRONMENT*Peer Behavior:*

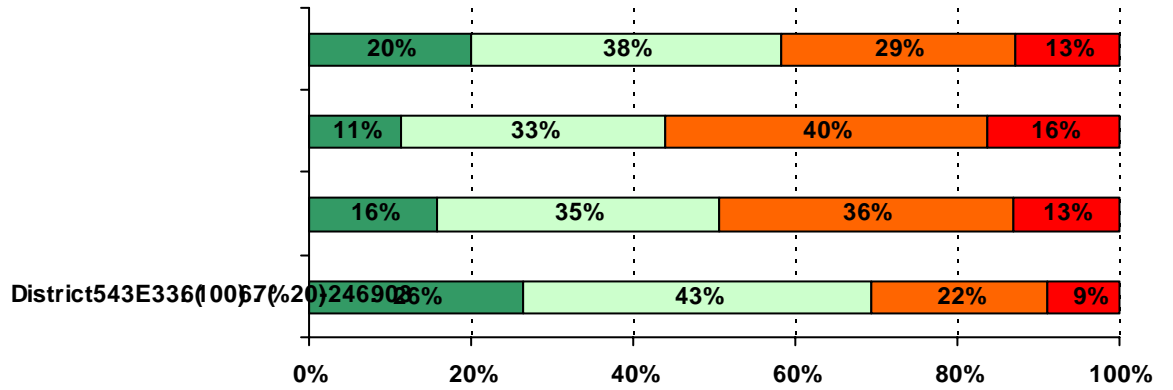
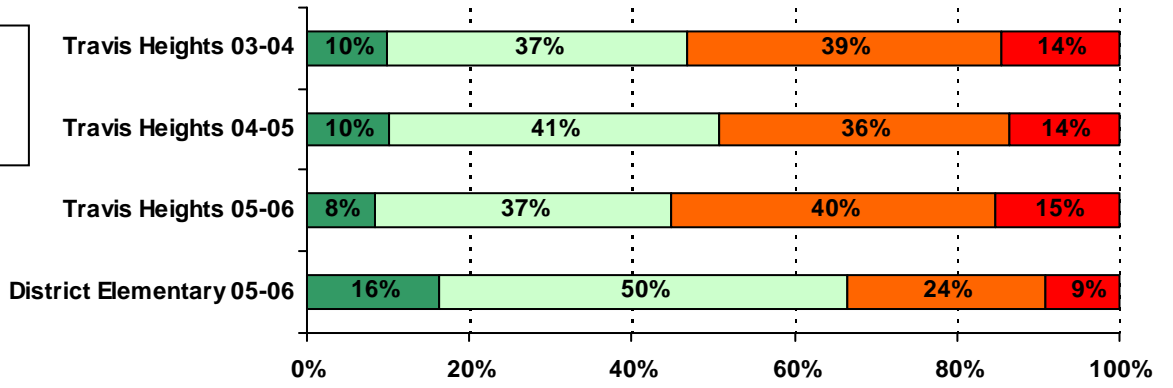
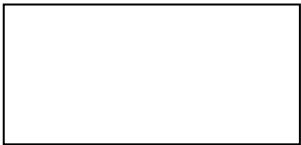
<i>Peer Behavior Items</i>	Travis Heights 03-04	Travis Heights 04-05	Travis Heights 05-06	All Elementary Schools 05-06
Peer Behavior Average	2.53	2.49	2.48	2.79

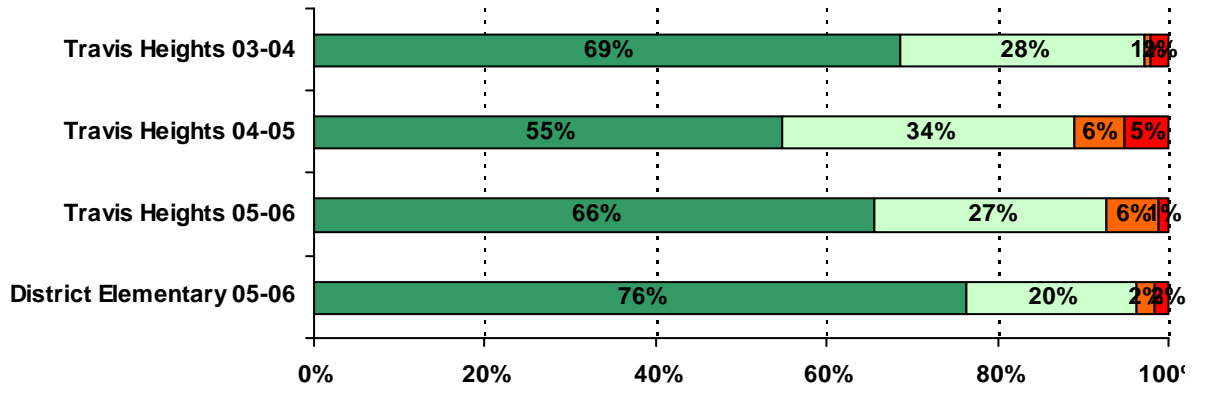


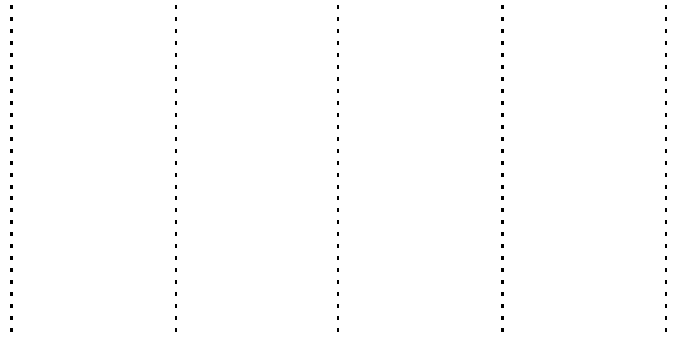
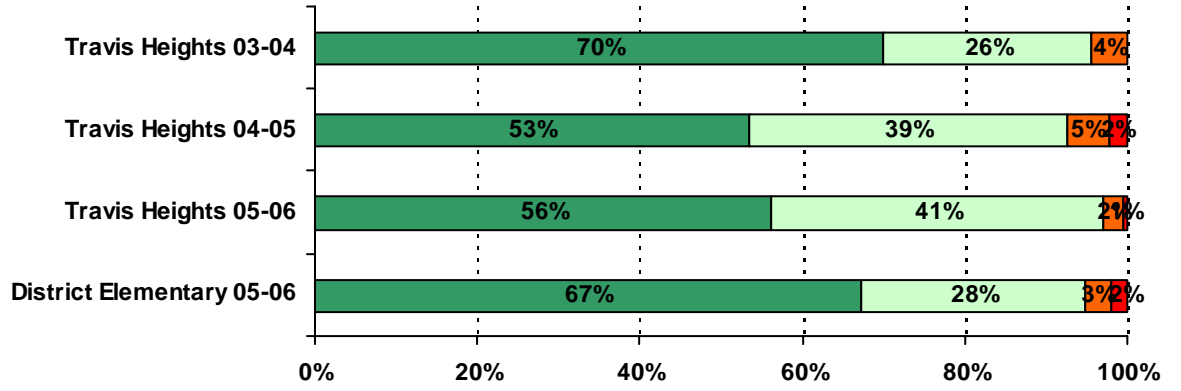
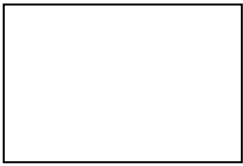
<i>Teacher Support and Engagement Items</i>	Travis Heights 03-04	Travis Heights 04-05	Travis Heights 05-06	All Elementary Schools 05-06
Teacher Support and Engagement Average	3.31	3.08	3.32	3.39

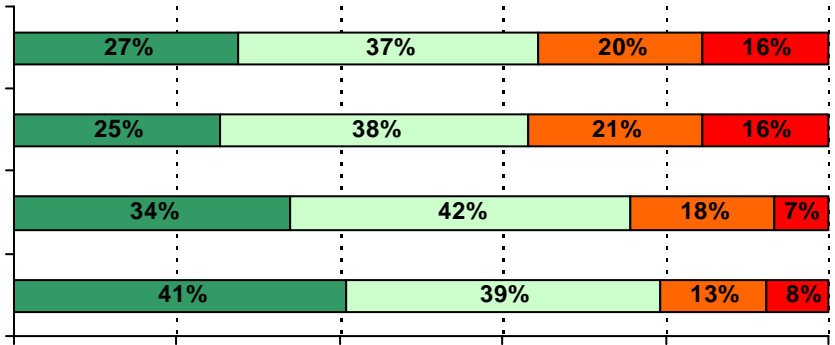


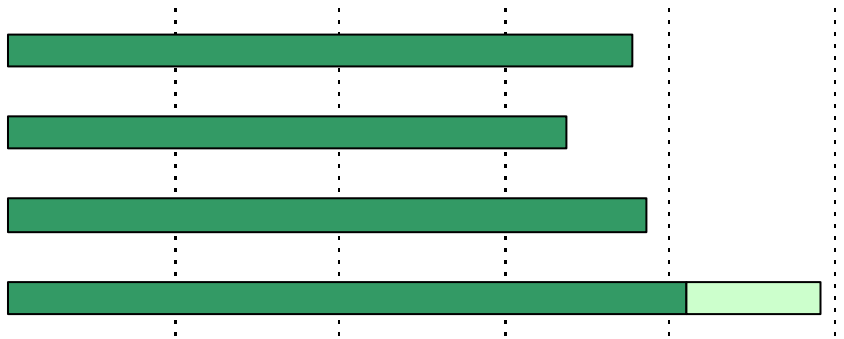
<i>Academic Self-Confidence Items</i>	Travis Heights 03-04	Travis Heights 04-05	Travis Heights 05-06	All Elementary Schools 05-06
Academic Self-Confidence Average	3.27	3.23	3.33	3.39











.....

.....

.....

.....

.....

