

AISD

HIGH SCHOOL EXIT SURVEY R

Survey Report

## INDIVIDUAL ITEM RESPONSES FOR TRAVIS HIGH SCHOOL

## OPEN ENDED COMMENTS

The responses below are to the question, "What is the ONE thing that you especially want the administration of AISD to know?"

Eighty-two (45%) provided a response. Students made many general comments about the experiences they had at Travis or mentioned future plans or talked about their personal characteristics. A large number of students made positive comments about the Talent Search Program. Students also requested more security personnel on campus. Commonly identified themes expressed by the Class of 2009 include:

x Project Talent Search. Students provided many positive comments about the college counseling at Travis, particularly the information and services provided by Talent Search. "My educational talent search advisor [redacted] helped me narrow down my options and really developed relationships with all of us to help get into college." "I would like them to know that the one person whom helped me the most in applying to college would be [redacted] Talent Search College Advisor from Travis HS. She answered any questions I had concerning my applications and was very supportive. She also a very trustworthy someone whom I could completely go to with anything."

x Security. Several students complained about inadequate security on campus. "Travis has more security at the school, especially outside of the school" "There needs to be more security."

<sup>1</sup> All student quotes are taken directly from the survey responses provided by the students. Examples are given to illustrate common themes.

POSTSECONDARY INTENTIONS AND FAMILY SUPPORT

Table 2. Within A Year After Graduating From High School, What Do You Plan To Do? (Item 6)

	Travis 2007	Travis 2008	Travis 2009	All HS 2007	All HS 2008	All HS 2009
Continue my education*	77.0%	88.0%	88.5%	89.0%	92.2%	93.1%
Go into the military	2.1%	0.5%	3.3%	2.6%	2.8%	3.9%
Be a full-time parent	5.8%	3.4%	4.9%	2.2%	2.2%	1.7%
Work full-time	16.8%	13.5%	20.2%	13.2%	13.5%	11.7%
Work part-time	31.4%	25.5%	26.8%	35.5%	41.1%	32.9%
No plans	12.0%	6.3%	6.6%	5.6%	2.4%	2.3%

Note Respondents could select more than one option, so percentages may not total 100%.

\* Item was recoded to match longitudinal data. In 2008, this was two items: "Attend a school or college for a business, technical, trade, or vocational certificate" and "Attend a college or university for a degree." The percentage represents all students who chose either or both options.

Table 3. If You Are Not Planning To Pursue Further Education At This Time, What Are Your Primary Reasons? (Item 7)

	Travis 2007	Travis 2008	Travis 2009	All HS 2007	All HS 2008	All HS 2009
Cannot afford to attend school	30.8%	12.0%	25.0%	30.6%	16.9%	33.0%
Childcare or family responsibilities	7.7%	24.0%	18.8%	9.8%	14.9%	11.4%
Don't like attending school	0.0%	4.0%	0.0%	22.4%	19.4%	17.6%
Grades/test scores aren't high enough	7.7%	12.0%	12.5%	23.0%	16.5%	21.6%
Don't feel academically prepared	11.5%	8.0%	31.3%	15.8%	13.7%	17.0%
Need income to support myself	30.8%	20.0%	6.3%	34.4%	21.8%	28.4%
Need income to support others	7.7%	4.0%	31.3%	10.4%	6.0%	10.8%
Other	9.3%	12.0%	7.1%	16.8%	22.6%	12.9%

Note Respondents could select more than one option, so percentages may not total 100%.

Table 4. If You Are Not Planning To Pursue Further Education At This Time, Do You Intend To Pursue It At A Later Time? (Item 8)

	Travis 2007	Travis 2008	Travis 2009	All HS 2007	All HS 2008
--	----------------	----------------	----------------	----------------	----------------



Table 6. How Far Did Your Parents Go In School? Indicate Your Mother's and Father's Highest Level Of Education. (Item 12)





Table 9. For Each Of These Extracurricular Activities, Did You Spend More Than 10 Hours Per Week During Your Senior Year On Them? (Items 14 & 16)

* Percentage of seniors indicating they spent more than 10 hours per week on each activity.	Travis 2009	All HS 2009
<b>Inside school</b>		
Music	3.4%	8.0%
Theater	0.6%	3.2%
Dance	3.5%	3.8%
Sports	18.5%	23.4%
UIL academic competitions	0.6%	2.3%
Speech/debate	0.0%	1.3%
Student government	0.6%	0.9%
Career and technical student organizations	0.6%	2.3%
<b>Outside school</b>		
Music	5.9%	6.6%
Theater	1.8%	1.5%
Dance	3.5%	2.9%
Sports	20.0%	19.1%
Community service/volunteering	3.5%	6.3%
Environmental project/activities	0.6%	1.8%
Boy/Girl Scouts	0.6%	0.6%
Family care	5.9%	7.2%

\* Respondents could select more than one option, so percentages may not total 100%.

Table 10. Please Indicate The Number Of Years Of High School That You Have Been Employed (Either During The Year Or During The Summer). (Item 17)

	Travis 2008	Travis 2009	All HS 2008	All HS 2009
0	48.7%	38.9%	24.4%	27.9%
1	15.1%	23.9%	28.2%	26.8%
2	18.6%	20.6%	26.2%	24.5%
3	11.1%	9.4%	13.7%	12.9%
4	6.5%	7.2%	7.5%	7.9%

Figure 1. Now Indicate The Number Of Hours Per Week That You Have Worked During Last Summer. (Q18a)

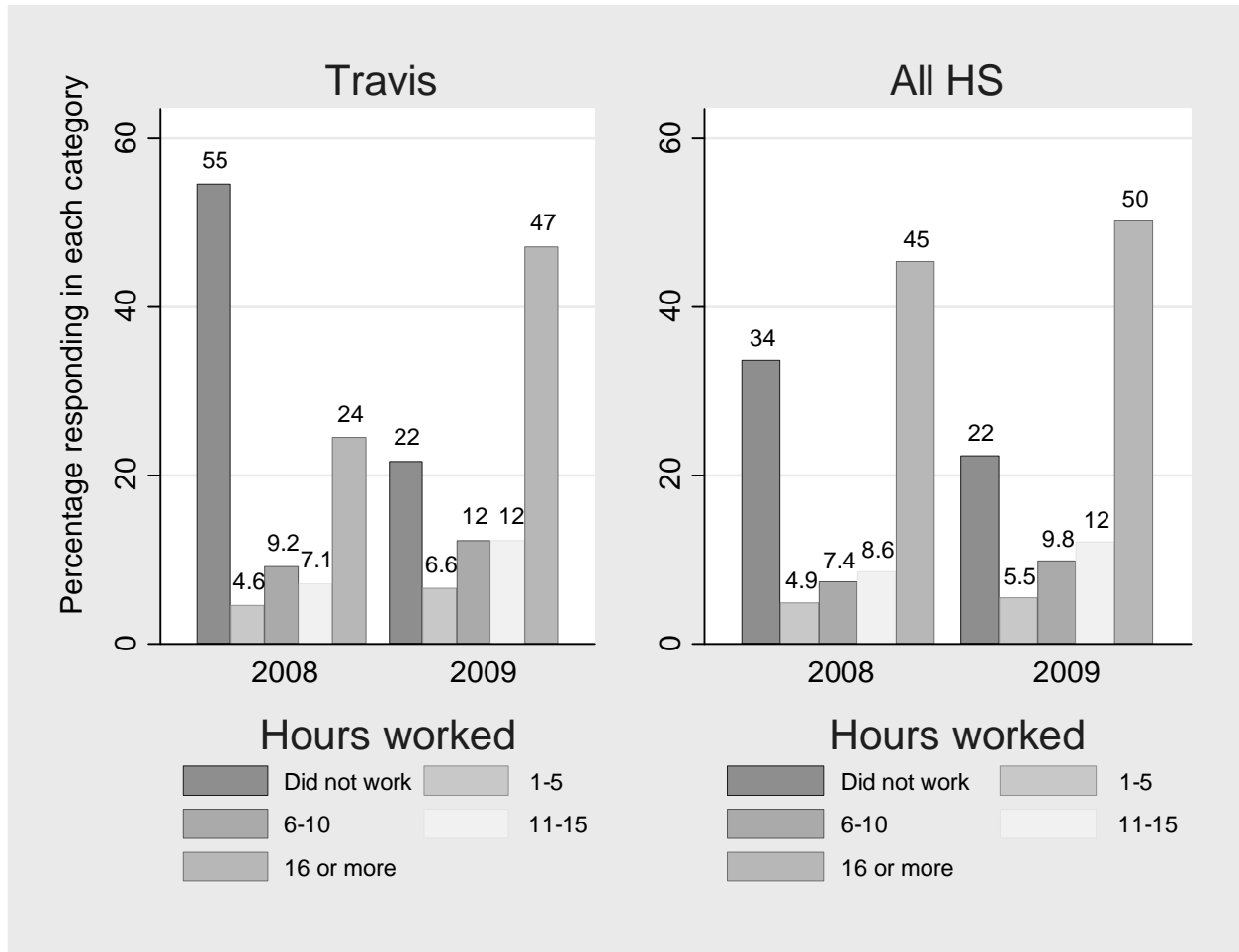




Figure 2. Now Indicate The Number Of Hours Per Week That You Have Worked During Your Senior Year. (Q18b)

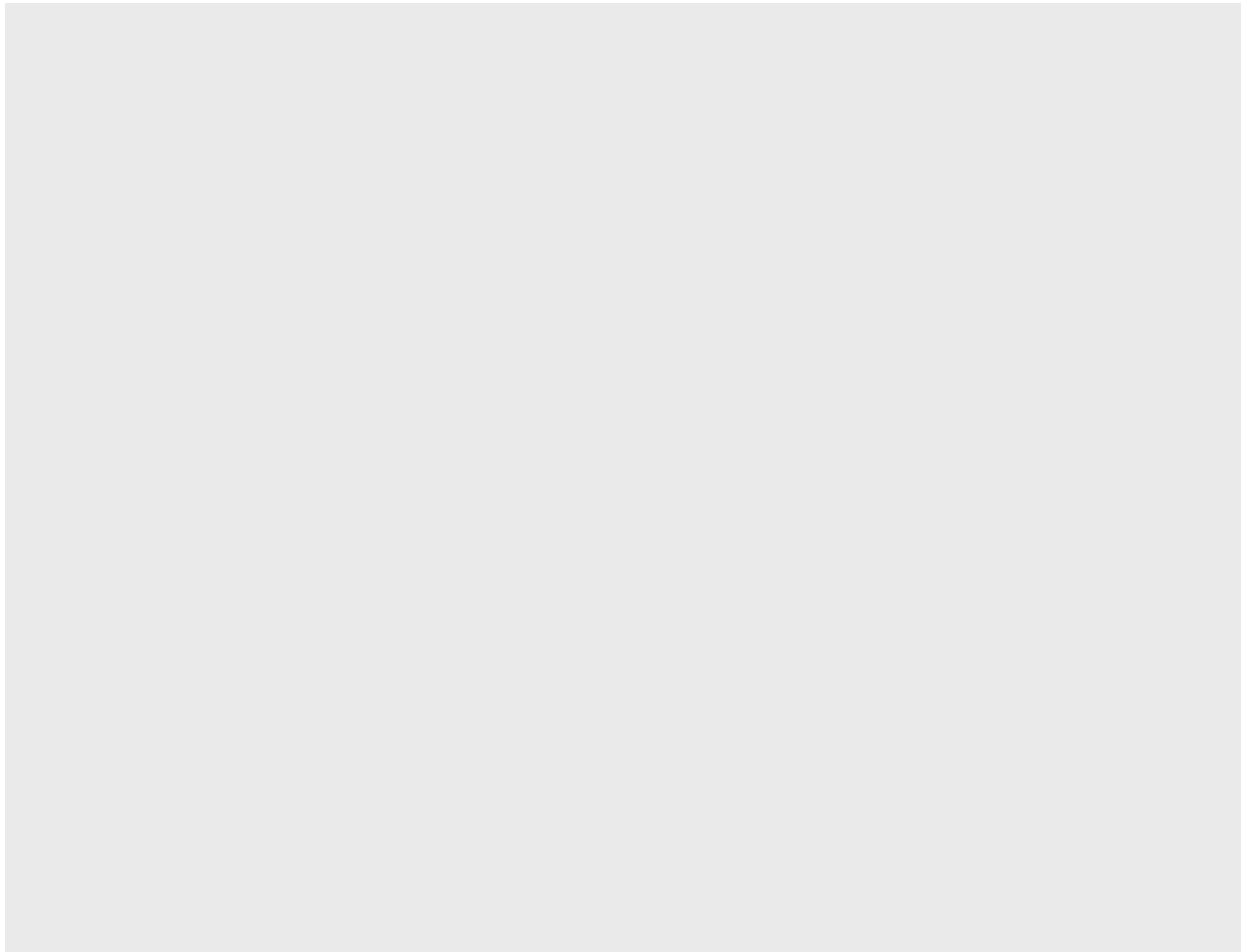


Figure 3. Thinking Back On Your Years In High School, How Many Hours Per Week Did You Typically Spend Studying, Doing Research, Completing Homework Assignments Outside Of Class? (Item 19)

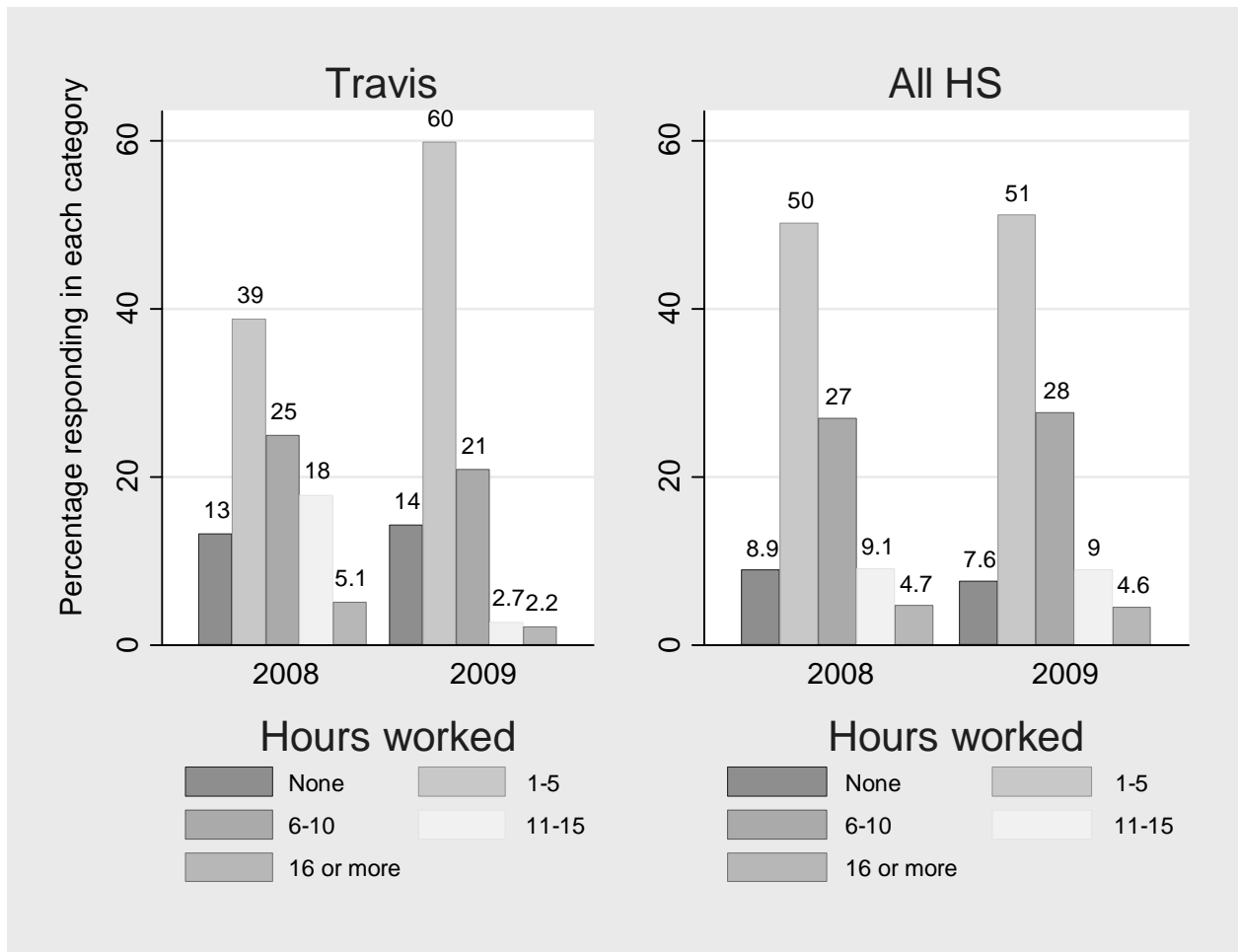
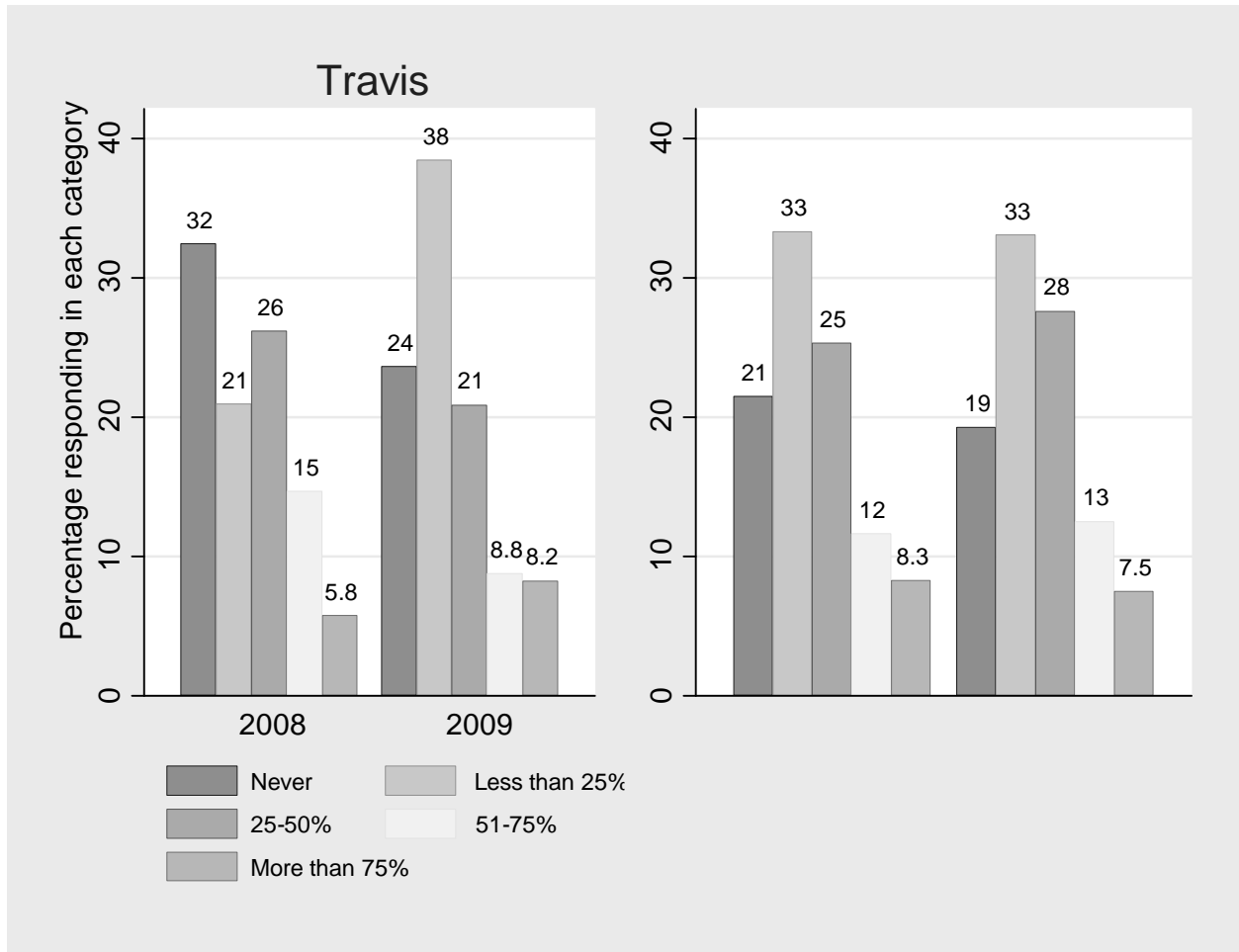


Figure 4. On Average, What Percentage Of You Study, Research And Homework Was Done Without Distractions (E.G., Television, Music, IM, Texting, Phone Calls)? (Item 20)





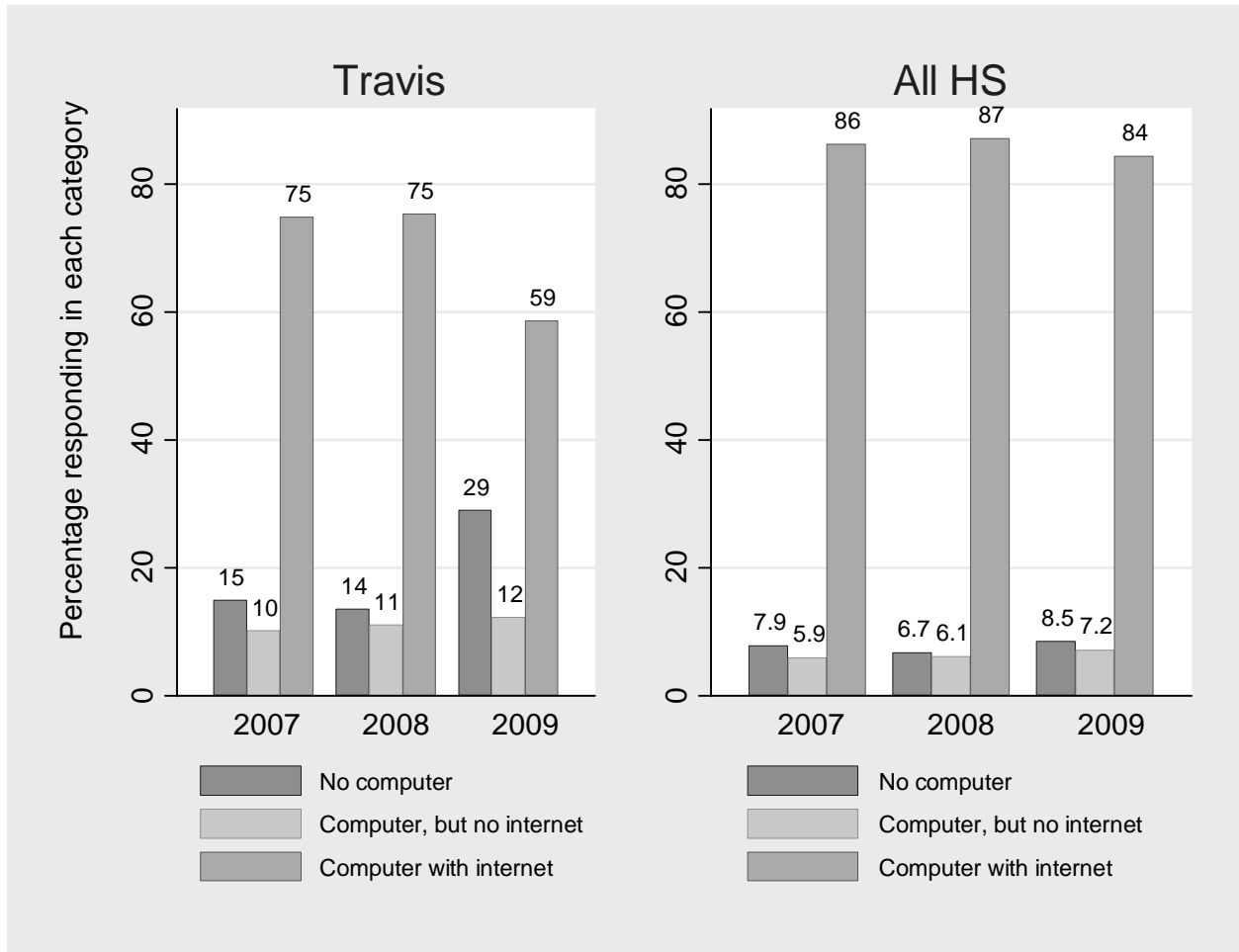
## INSTRUCTION AND TECHNOLOGY

Table 13. How Well Did Your High School Help You To Actively Develop Knowledge And Skills In The Following Areas? (Item 22)

* Percentage who responded Somewhat well or Well	Travis 2007	Travis 2008	Travis 2009	All HS 2007	All HS 2008	All HS 2009
Teamwork	.	94.4%	90.4%	.	88.6%	89.7%
Creative thinking	93.6%	94.3%	93.8%	90.8%	90.6%	91.7%
Problem solving	94.1%	93.8%	89.9%	92.9%	91.5%	92.0%
Conflict resolution	89.8%	91.8%	84.3%	84.6%	82.8%	84.1%
Personal health/fitness	89.3%	87.6%	87.6%	78.5%	78.6%	81.0%
Time management	.	89.7%	84.3%	.	80.8%	81.2%
Technology	.	89.7%	89.8%	.	84.6%	84.2%

Note. Missing values, denoted by a period, indicate the item was not included on the respective year's survey. NSTRUCT g

Figure 5. Which Of The Following Describes Your Computer And Internet Access At Home?  
(Item 24)



Note This item was recoded to match longitudinal data. In prior surveys, students were asked to indicate the type of Internet service they had at home.

Figure 6. Do Your Parents Use Parentconnect/Gradespeed To Monitor Your Grades?  
(Item 27)

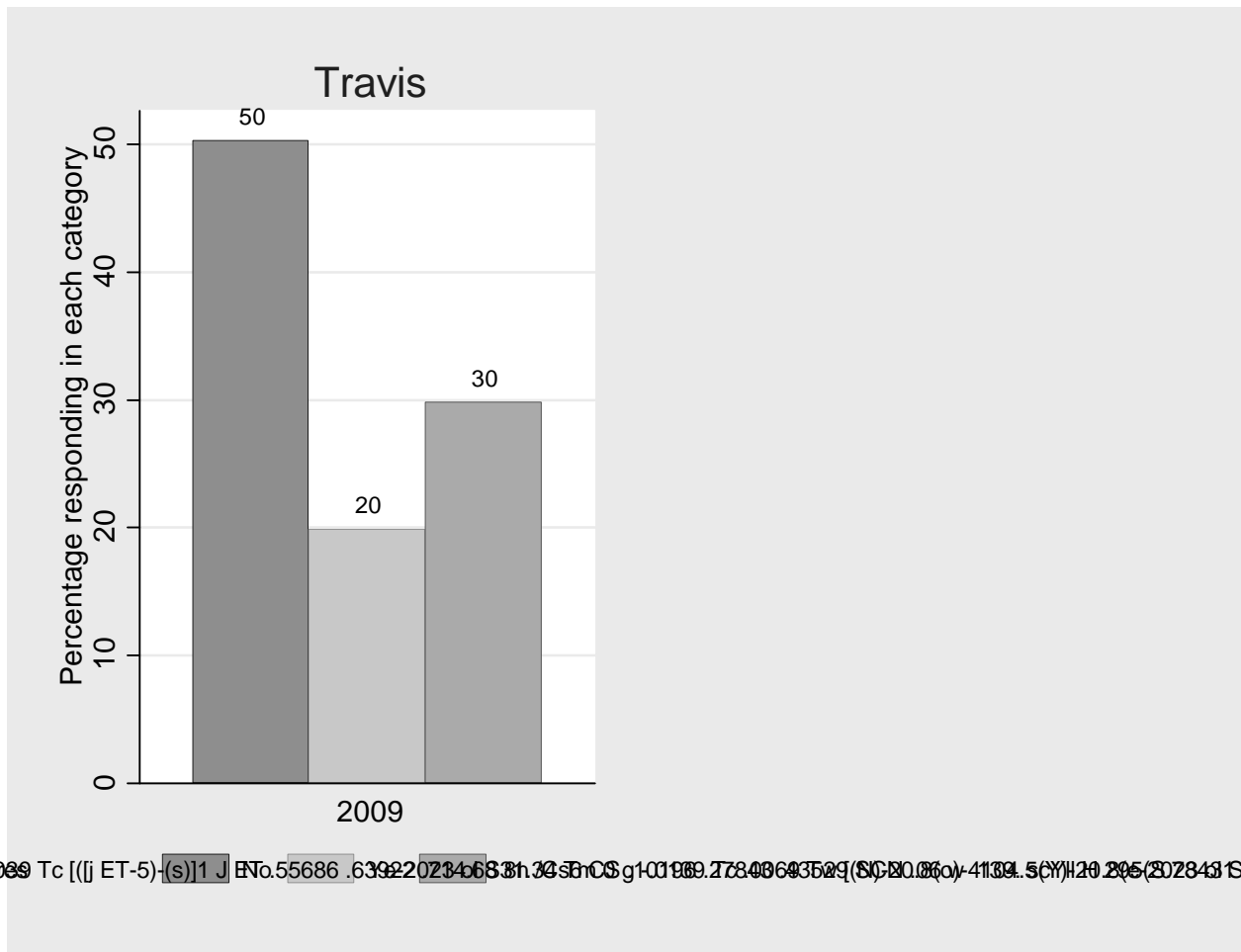


Table 15. How Frequently Do You Use A Computer?: (Item 25)

* Percentage who responded At least once a week or more	Travis 2007	Travis 2008	Travis 2009	All HS 2007	All HS 2008	All HS 2009
At home?	79.9%	83.4%	57.2%	86.4%	86.7%	83.9%
At school?	84.1%	89.1%	60.6%	70.8%	74.0%	73.1%
To present material in class, for example, using PowerPoint	42.9%	49.5%	24.0%	22.6%	23.5%	22.0%
To type a paper or class assignment?	59.0%	41.0%	35.2%	57.2%	55.3%	53.5%
To search the Internet to complete class-related assignments?	57.4%	51.1%	48.0%	62.3%	61.6%	62.7%
To research college/career choices?	50.3%	46.4%	46.6%	50.5%	50.6%	51.0%
To complete online forms or applications for college/employment?	34.0%	51.6%	39.3%	43.4%	44.0%	43.4%
To communicate with teachers (e.g., email, IM, etc.)?	16.0%	12.1%	16.0%	18.1%	20.8%	17.8%
To communicate with friends (e.g., email, IM, blog, Facebook, etc.)?	51.6%	69.2%	52.8%	74.1%	74.8%	72.5%
To monitor grades/progress in school?	.	.	21.1%	.	.	29.4%

Note Missing values, denoted by a period, indicate the item was not included on the respective year's survey.  
 \*Responses were Never, Less than once a week, Once a week, Every day, and Almost every day. Reports prior to 2008 indicated item means; in 2009, percentages represented the number of students at least once a week or more.



Table 16. Indicate How Much You Agree With Each Of The Following Statements About Technology Use At School: (Item 26)

* Percentage who responded Agree or Strongly agree	Travis 2008	Travis 2009	All HS 2008	All HS 2009
My teachers effectively use the technology resources that are available.	95.5%	93.9%	85.7%	89.8%
I would like to use more electronic communication with my classmates as part of my schoolwork.	93.4%	86.2%	79.8%	82.3%
I would like to use more electronic communication with my teachers.	87.9%	76.4%	73.2%	76.0%
I would like to use more online resources.	93.9%	89.4%	82.1%	84.0%

\* Responses were Strongly disagree, Disagree, Agree, Strongly disagree and Don't know/Unsure.

POSTSECONDARY PREPARATION AND ADVISING

Table 17. At What Time In Your Life Did You Start Thinking About College As A Possibility After High School? (Item 29)

	Travis 2007	Travis 2008	Travis 2009	All HS 2007	All HS 2008	All HS 2009
As long ago as I can remember*	16.1%	22.9%	20.3%	39.1%	40.5%	38.7%
In elementary school	12.8%	4.7%	4.4%	12.0%	8.5%	7.6%
In middle/junior high school	23.3%	34.9%	19.2%	21.0%	21.9%	21.0%
In high school	45.0%	33.9%	54.4%	25.3%	26.9%	30.9%
I've never thought about college as an option after high school	2.8%	3.6%	1.6%	2.5%	2.3%	1.8%

\* Item changed from 2007 surveys, when it was "When I was a child."



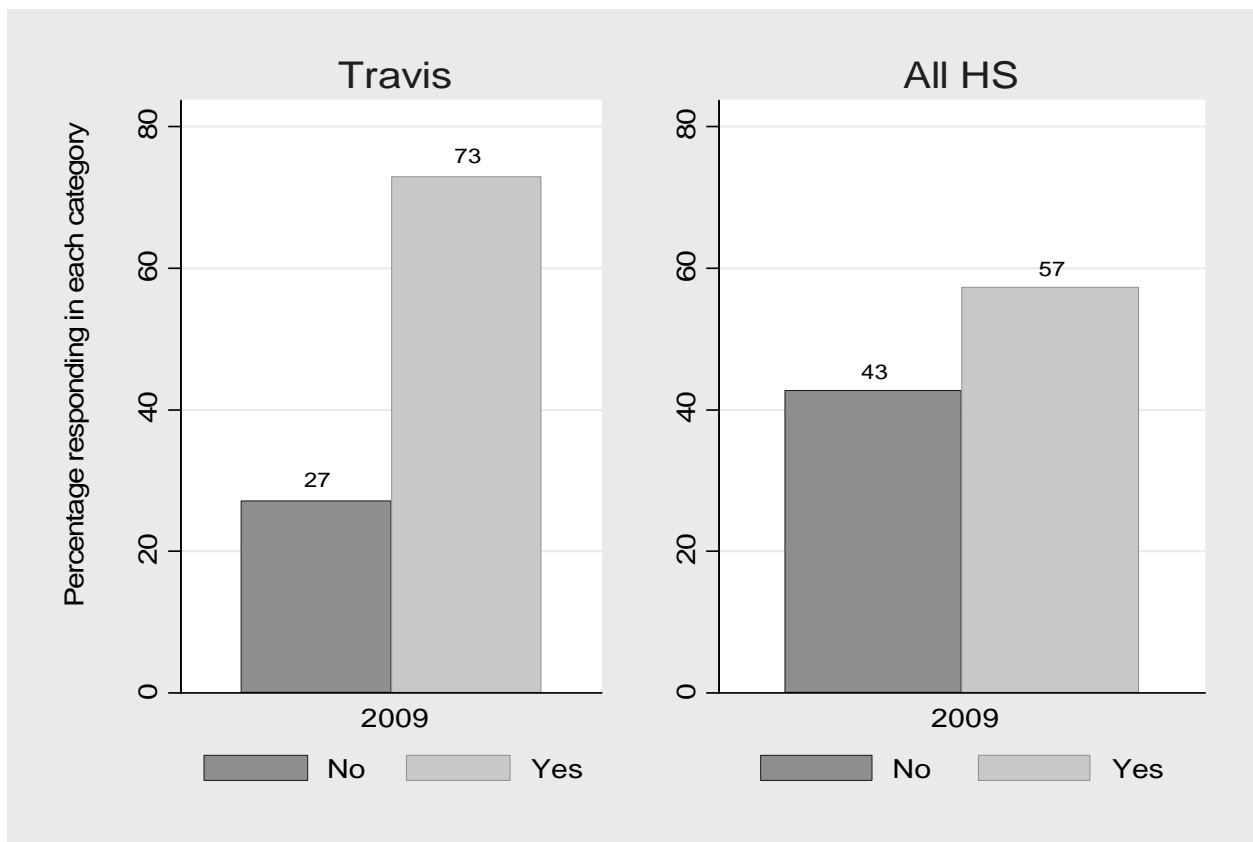
	Travis 2008	Travis 2009	All HS 2008	All HS 2009
Project ADVANCE	64.9%	30.6%	26.1%	17.9%
AVID	5.3%	6.0%	8.9%	8.8%
ACC College Connections	12.0%	21.9%	17.1%	18.0%
College Forward	6.7%	11.5%	3.0%	3.5%
Con mi MADRE	1.0%	2.2%	3.0%	1.9%
Talent Search/Trio	13.5%	15.3%	2.6%	2.6%
Upward Bound	0.0%	3.8%	1.8%	1.3%
Breakthrough	1.0%	0.0%	1.5%	1.3%
Immigrant College Access	.	5.5%	.	2.3%
I did not participate in any programs like this	14.4%	26.2%	41.6%	41.3%
Other	2.9%	4.9%	4.9%	3.0%

Note.

	Travis 2007	Travis 2008	Travis 2009	All HS 2007	All HS 2008	All HS 2009
Have you applied to a 2-year college	65.4%	43.8%	49.7%	49.8%	41.4%	41.3%
Have you applied to a 4-year college?	61.8%	67.3%	44.3%	69.1%	63.9%	62.7%
Have you applied to a business/technical/vocational school?	25.1%	5.3%	11.0%	13.7%	6.5%	8.5%

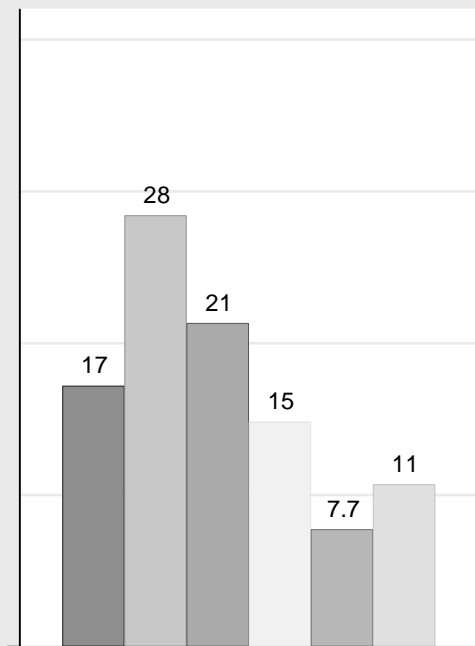
Note On the 2009 survey, students were asked to indicate the number of schools to which they had applied, whereas in 2008, students were only prompted to indicate whether they had applied.

Figure 7. Will You Be The First Of Your Siblings (Brothers Or Sisters) To Attend College? (Item 10)



Note This item was reworded for the 2009 survey. In past years we asked students if they were the first person in their family to attend college. For 2009, we asked students to respond to the question about their siblings and parents. Therefore, no longitudinal data were available for this question.

Figure 8. How Many Siblings (Brothers Or Sisters) Do You Have Who Are Either Enrolled In College Or Live With You (Item 11)







ADDITIONAL RESULTS

Figure 9a. What Is The One Thing That Was Most Important To Keeping You Going Through School All The Way To Graduation? (Item 48, Travis)

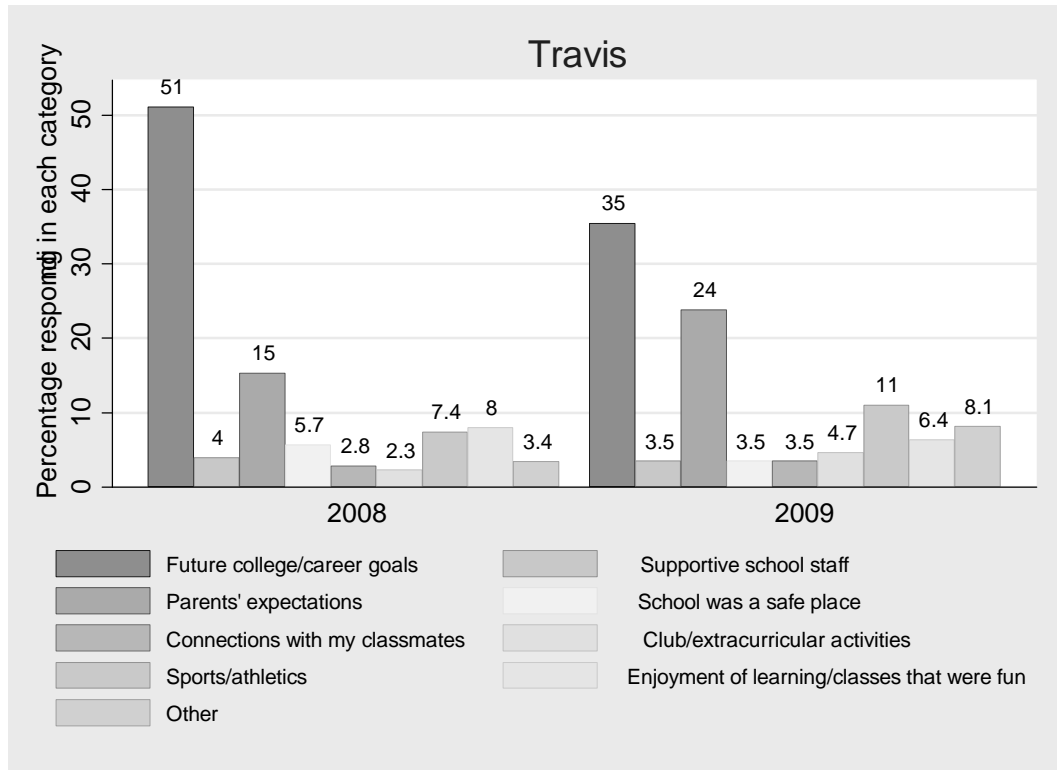




Figure 9b. What Is The One Thing That Was Most Important To Keeping You Going Through School All The Way To Graduation? (Item 48, All High Schools)

