

**RESULTS OF THE AISD HIGH SCHOOL EXIT SURVEY
CLASS OF 2007**

TRAVIS HIGH SCHOOL

The fifth annual Austin ISD High School Exit Survey was administered electronically to seniors in every AISD High School during the Spring of 2007. This report contains the results for the Class of 2007, along with a longitudinal summary of responses, where available¹.

The survey is organized into five general topics: Postsecondary Intentions, Postsecondary Preparation, Campus Climate and High School Experiences, Technology Usage, and Parent Involvement. Individual item results are presented, both for your campus and for all High Schools.

The district-wide response rate for the High School Exit Survey remained similar to that of previous years (Table 1). Surveys were received from 3,235 students in the Class of 2007. The survey sample once again closely resembles the ethnic and gender distribution of the district's senior class, indicating that the results are representative of the entire senior class population.

Table 1. AISD High School Exit Survey Response Rates, Classes of 2004 to 2007

	Percentage of Enrolled Seniors Responding ²			
	Class of 2004	Class of 2005	Class of 2006	Class of 2007
TRAVIS	81.1%	99.6%	83.5%	77.3%
ALL HIGH SCHOOLS	81.5%	85.3%	86.0%	82.0%

INDIVIDUAL ITEM RESPONSES FOR TRAVIS

Item 1. *What is the ONE thing that you especially want the administration of AISD to know.*

Themes from this open-ended comment section have been identified and summarized each year. Generally, comments remain consistent from year to year; commonly identified themes expressed by the Class of 2007 include:

Respect. Students continued to express a desire to be treated with respect and fairness by school staff, including administrators, office/attendance staff, hall monitors, security and parking lot personnel. Many felt that they were treated with suspicion and disrespect as a result of the behavior of other students. Students also were concerned that some rules (e.g., parking, dress code, off-campus lunch) were enforced inconsistently.

Academics. Many students wished they had been told about the importance of good grades and rigorous coursework starting as early as middle school. They also questioned the quality of instruction during High school. Students stressed the importance of learning about college requirements and the college application process earlier in their high school careers. Negative comments about TAKS also were widespread.

Attendance and Exemption Policies

people cut in line and more security should be placed there to avoid serious fights later in the day.

Personal challenges. Students at Travis also commented on personal factors that made their school experiences more challenging, such as having children, unsupportive families, or general confusion about what to do next. Examples of these comments include:

i am a young married woman with a baby graduating a year early that did not had a chnace to do what i wanted to master on in college in high school.

Throughout my highschool year i never concentrated on going to college because my family didn't talk about it. All that was on my mind was being the best i could be and then go to work. I never realized that i would be doing so well and i have realized that i am definitely cut out for a college life.

that this was my secod yr. at Travis and it was the same as last yr excep that I know have 2 kids insted of 1

My parents really don't care for my education. Eventhough I have lived with them they rarely bought me anytihng. I had to work to take care of myself. They onl ycare about thieir partners.I feel sorry for my brother's and sisters because they already said they aren't going to go to college. Because they won't be able to graduate. Because they saw me stressing over the Taks wich I hope I passed.

Item 2.

Items 6a-n. Climate

	2004-2005		2005-2006		2006-2007	
	ALL HS	TRAVIS	ALL HS	TRAVIS	ALL HS	TRAVIS
School Climate						
This school is a safe place to learn.	3.2	3.2	3.1	3.0	3.1	3.0
The students at this school get along with each other.	2.7	2.9	2.6	2.5	2.6	2.7
The rules of this school are implemented fairly.	2.6	2.9	2.5	2.6	2.5	2.8
The adults at this school listen to the opinions of students.	2.6	2.9	2.6	2.7	2.5	2.8
There is at least one adult at my school who I can go to if I have a problem.	**	**	**	**	3.2	3.3
My teachers are fair with me.	**	**	**	**	3.1	3.1
School Climate Composite Score^a (=.76)	2.8	3.0	2.7	2.7	2.8	2.9
Academic Climate						
My teachers taught in a way that was clear and easy to understand.	3.0	3.1	3.0	3.0	3.0	3.1
I know how I am doing in school.⁺	3.1	3.2	3.1	3.1	3.2	3.2
My teachers kept me informed about how I was doing in my classes.	2.9	3.1	2.8	2.9	2.9	3.0
My teachers expect me to do high quality work.	3.2	3.3		3.3	3.2	3.2
My classes were rigorous and challenging.	2.9	3.1				

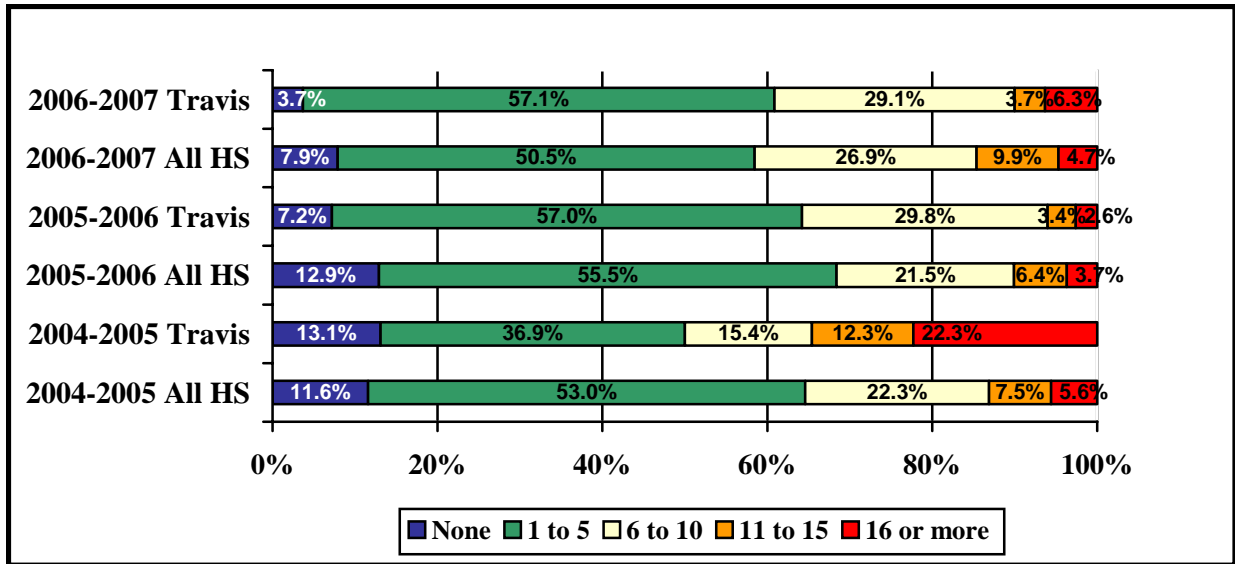
Item 5. *In which of the following extra-curricular activities did you participate while in high school?*

Activity	2004-2005	2005-2006	2006-2007
			

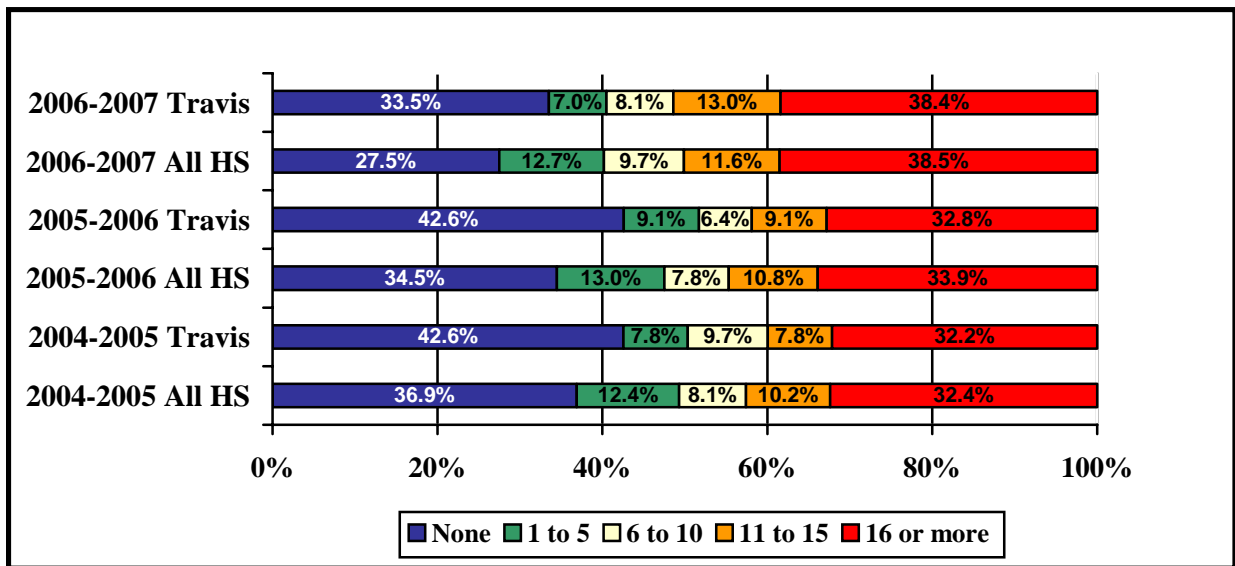
Item 8. Here is a list of community organizations found in and around Austin. Please indicate which of them, if any, you have participated in while in High School.

Organization	AKINS	ANDERSON	AUSTIN	BOWIE	CROCKETT	GARZA	JOHNSTON	LANIER	LBJ COMP	LBJ MAGNET	MCCALLUM	REAGAN	TRAVIS	TOTAL STUDENTS
--------------	-------	----------	--------	-------	----------	-------	----------	--------	----------	------------	----------	--------	--------	----------------

Item 9. Thinking back on your years in high school, how many hours per week did you typically spend studying, doing research, or completing homework assignments OUTSIDE of class?



Item 10. During your senior year, approximately how many hours per week have you been employed?



Item 11. How well did your high school help you to further develop knowledge and skills in the following areas?

	2004-2005		2005-2006		2006-2007	
	ALL HS	TRAVIS	ALL HS	TRAVIS	ALL HS	TRAVIS
Creative Thinking	2.4	2.5	2.4	2.5	2.3	2.3
Problem Solving	2.4	2.5	2.3	2.4	2.3	2.2
Conflict Resolution	2.2	2.4	2.0	2.1	2.2	2.2
Personal Health/Fitness	2.2	2.5	2.0	2.2	2.1	2.2
Composite Score	2.3	2.5	2.2	2.3	2.2	3.0

Note: Responses can range from 1 (not well) to 3 (very well).

Item 12. Please rate the quality of instruction that you feel that you received in the following areas:

	2005-2006		2006-2007	
	ALL HS	TRAVIS	ALL HS	TRAVIS
Writing	**	**	3.2	3.0
Mathematics	**	**	3.0	2.8
Science	**	**	2.9	2.9
Social Studies	**	**	3.2	3.1
Computer/Technology	**	**	2.9	3.2
Foreign Language	**	**	2.8	2.9
Performing/Fine Arts	**	**	3.0	2.9
Composite Score	**	**	3.0	3.0

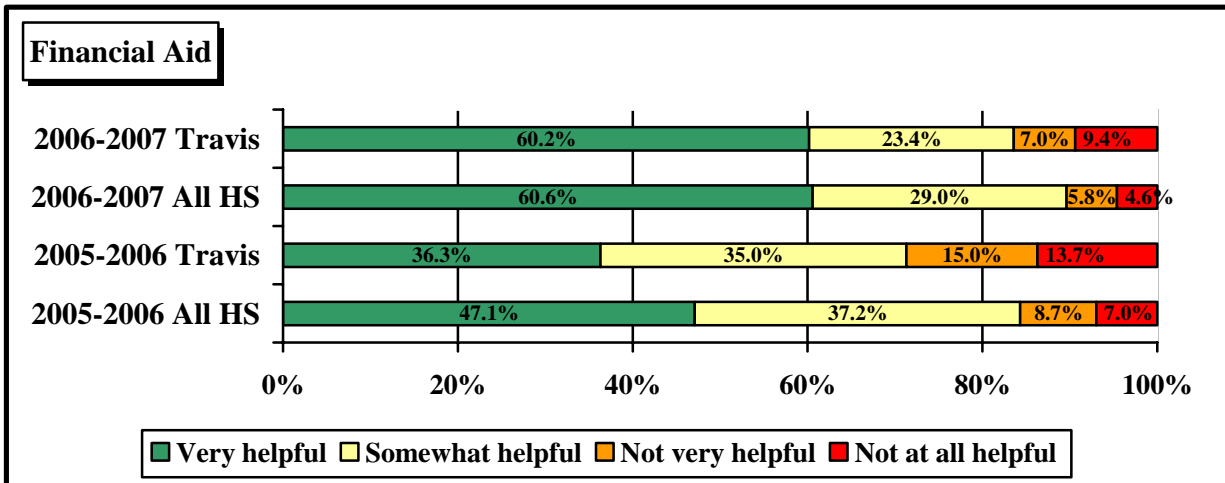
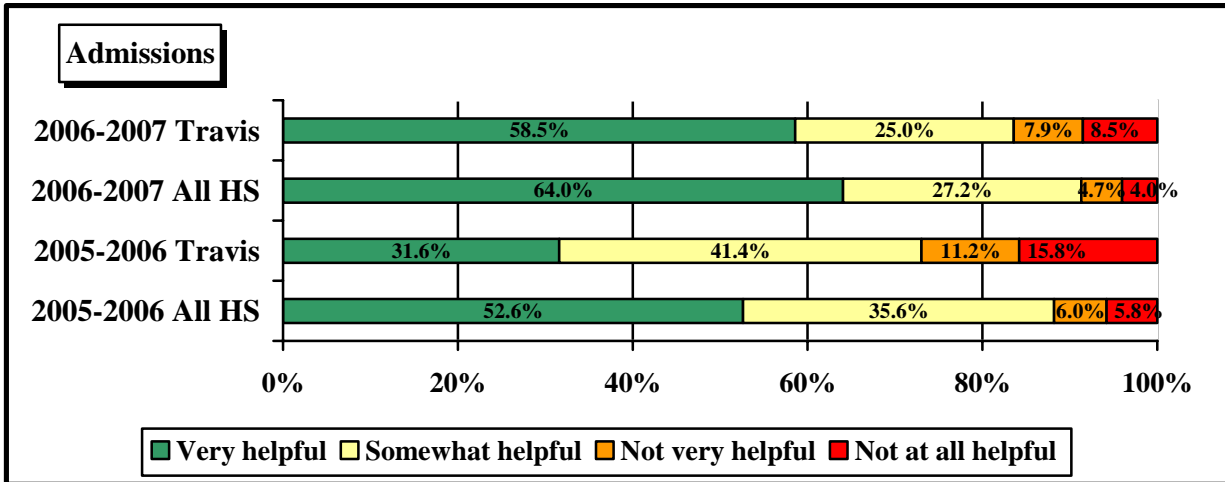
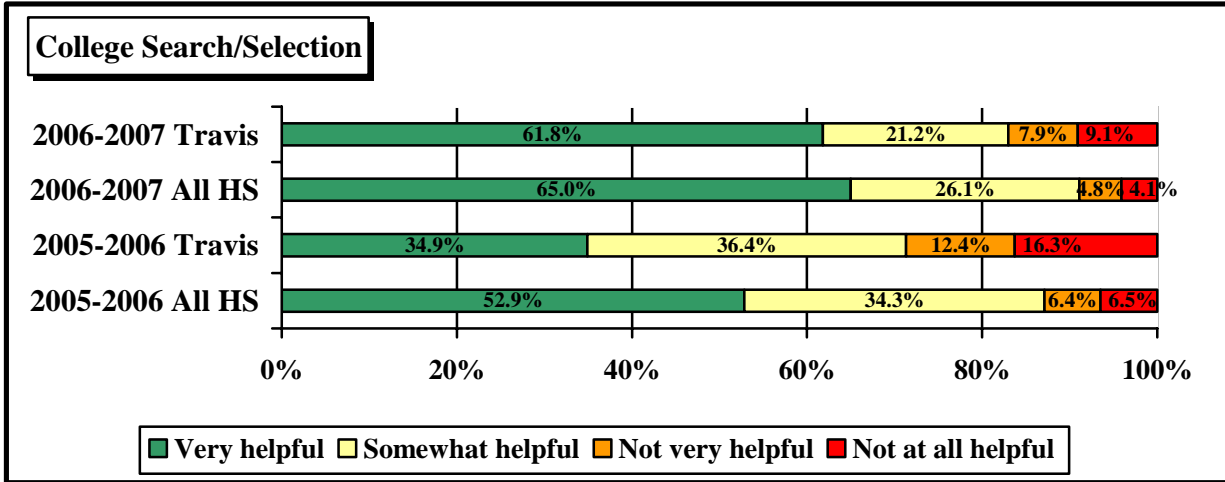
Note: Responses can range from 1 (Poor) to 4 (Excellent).

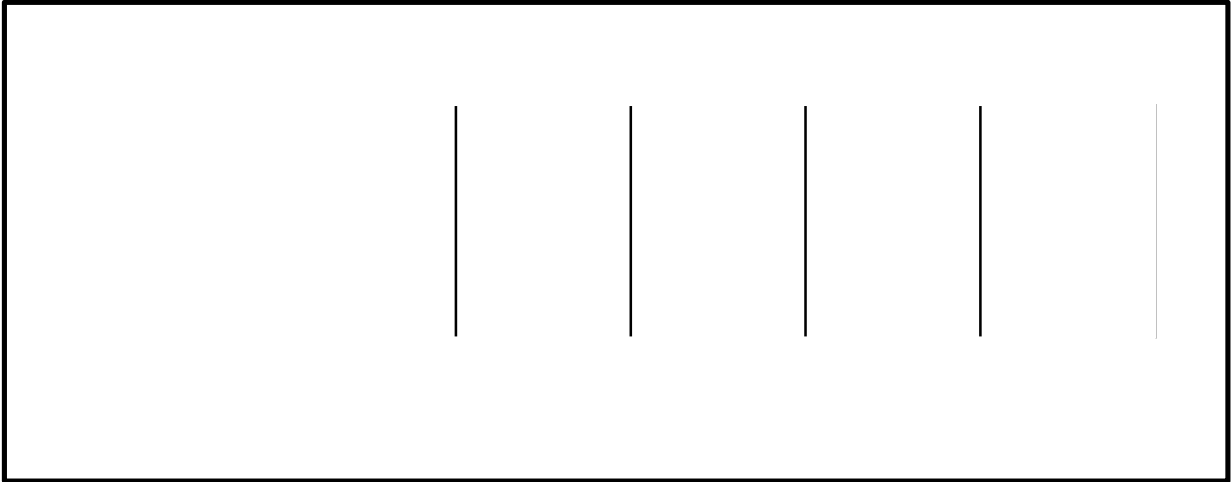
Item 13. *How frequently, on average, did you use a*

Item 16. High school preparation for post-graduation opportunities

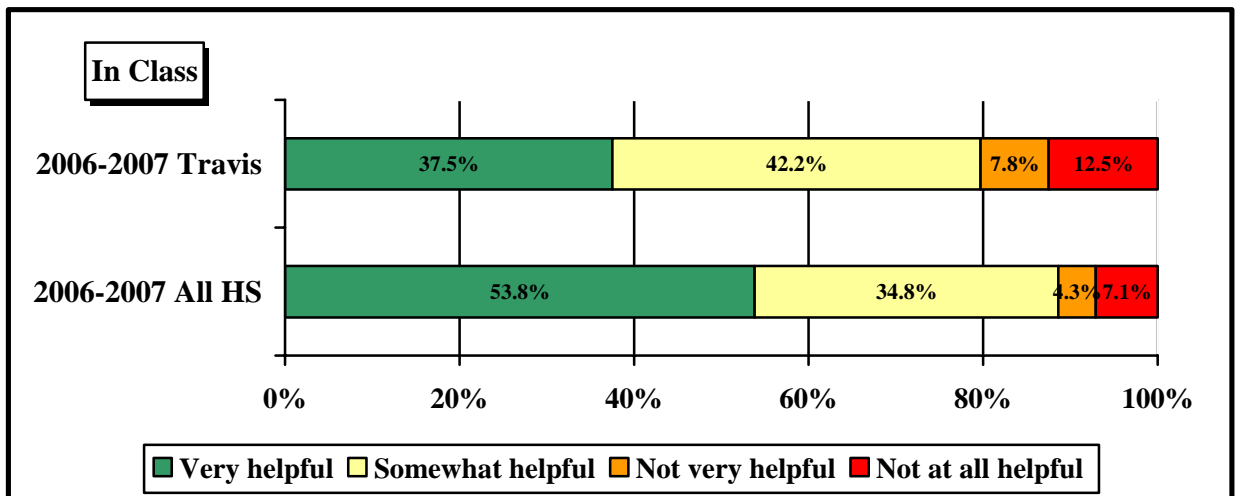
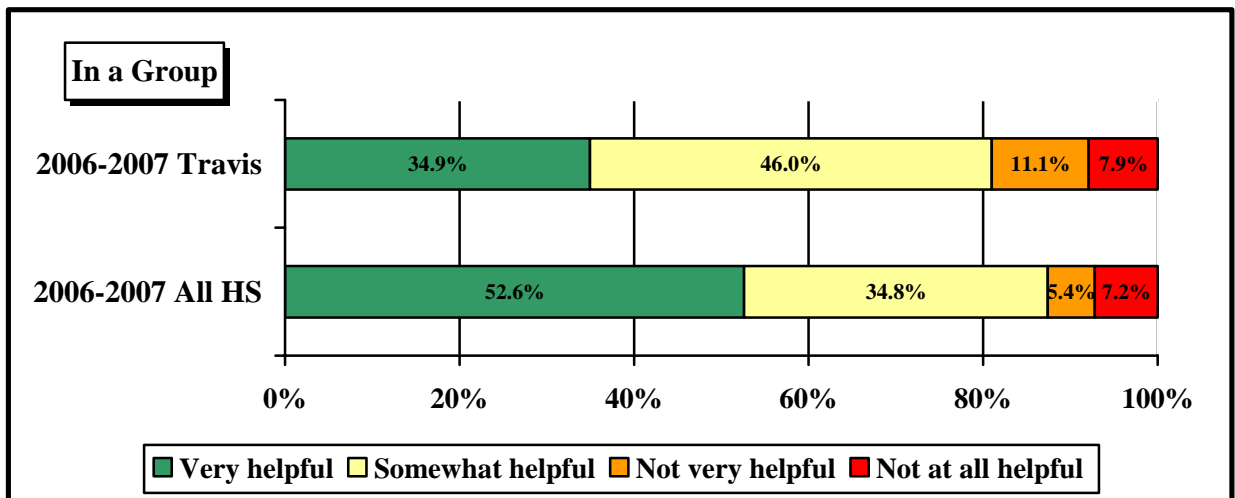
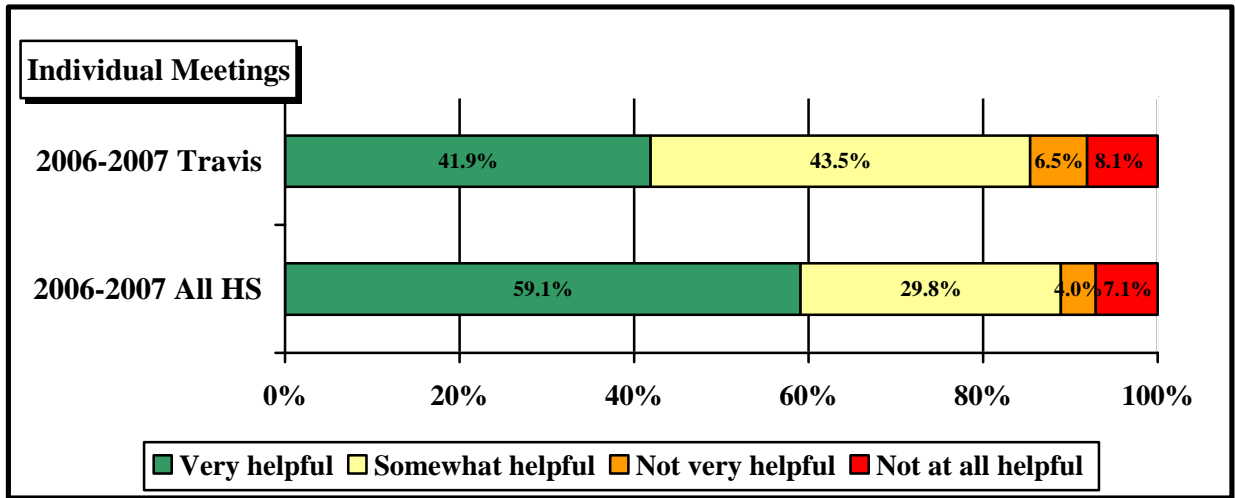
	2004-2005		2005-2006		2006-2007	
	ALL HS	TRAVIS	ALL HS	TRAVIS	ALL HS	TRAVIS
How well prepared were you to plan your course selections?+	2.3	2.5	2.3	2.2	2.2	2.2
How well prepared were you to meet your college and career goals?	2.3	2.4	2.3	2.2	2.2	2.0
How well prepared are/were you for the college/technical/vocational school application process?	2.2	2.4	2.2	2.1	2.1	2.0
How well informed are/were you about obtaining financial aid for education after high school (whether or not you applied)?	2.1	2.5	2.2	2.2	2.2	2.1

Item 20. How helpful was your Project ADVANCE Facilitator/College Advisor with the following processes?

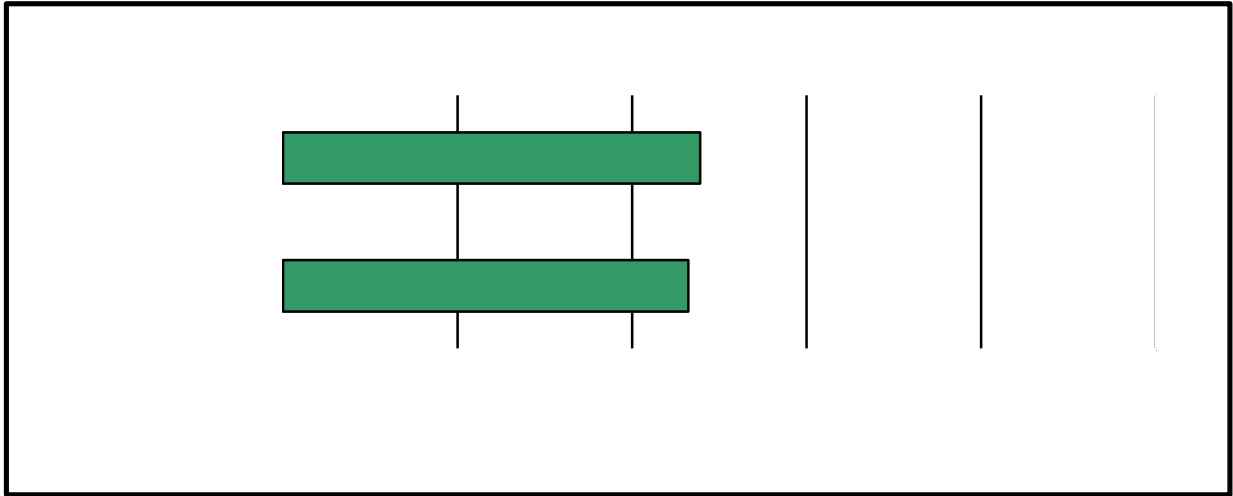




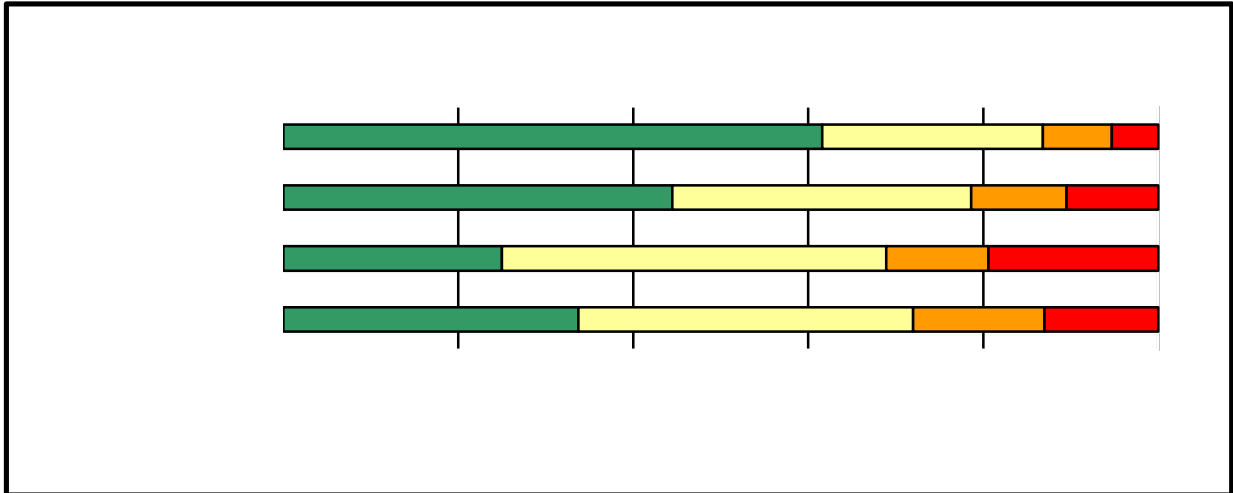
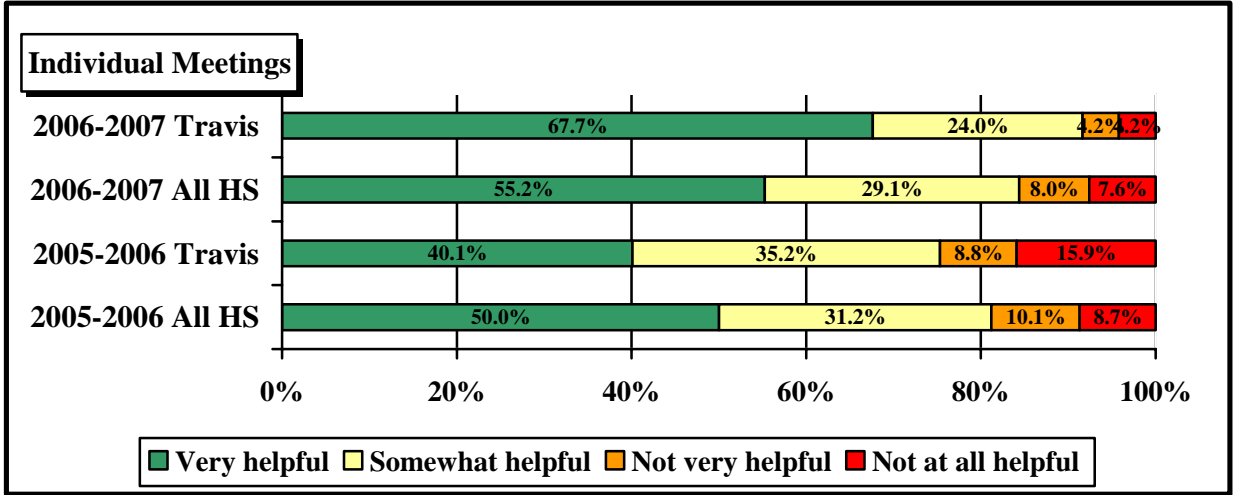
Item 21. How helpful was your Advocate in the following types of meetings? (Skip this question if you do not have an Advocate).



Item 22. *How helpful was your Advisory Teacher in the following types of meetings? (Skip this question if you do not have an Advisory Teacher).*



Item 23. How helpful was your School Counselor in the following types of meetings?

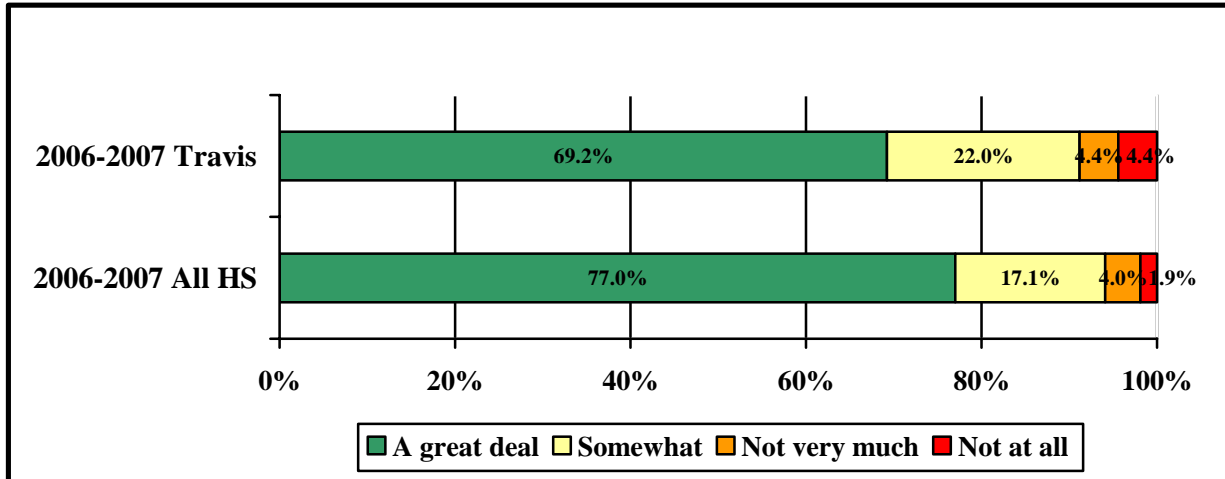


Item 24. For which of the following issues did you meet with a school counselor?

	2005-2006		2006-2007	
	ALL HS	TRAVIS	ALL HS	TRAVIS
Scheduling	81.5%	77.1%	76.7%	80.4%
Course selection & placement	60.1%	47.7%	56.2%	59.8%
Graduation plans	52.3%	48.5%	53.0%	66.1%
4 year plan	21.5%	18.4%	21.2%	47.6%
Graduation credit verification	41.0%	41.0%	39.1%	59.8%

Testing interm0 476.88 644.1 1476.8uent 611 1476.8uent 611 1476.8uent 611 1476.8uentan

Item 25. To what extent do your parents / family support your plans for after high school?+



Note: +In previous years, this item was worded, “

Item 28. How far did your parents go in school? Indicate your mother and father's highest level of education.

Education Level	2005-2006*		2006-2007			
	MOTHER		MOTHER		FATHER	
	ALL HS	TRAVIS	ALL HS	TRAVIS	ALL HS	TRAVIS
Did not finish high school	16.7%	38.0%	17.4%	30.5%	18.5%	33.9%
Graduated from high school or earned a GED	20.2%	22.9%	22.1%	41.2%	19.6%	37.4%
Attended a 2-yr community/junior college or vocational/technical school, but did not complete a degree	7.9%	5.6%	9.4%	5.6%	6.9%	4.6%
Graduated from a 2-yr community/junior college or vocational/technical school	4.4%	3.4%	5.4%	2.8%	4.6%	2.3%
Attended a 4-yr college, but did not complete a degree	7.3%	3.8%	7.1%	2.3%	6.6%	60.0%
Graduated from college	19.3%	6.8%	19.8%	1.7%	17.5%	2.9%
Completed a Master's degree or equivalent	10.3%	1.1%	10.6%	2.3%	12.1%	2.9%
Completed a Ph.D., M.D., or other advanced professional degree	3.3%	1.1%	3.1%	0.0%	5.4%	0.0%
Don't Know or Does Not Apply	9.3%	16.5%	5.2%	13.6%	8.6%	15.5%

*Note: Father was added in 2007.

Item 29. Thinking back, at what time in your life did you start thinking about college as a possibility after high school?

Time	2005-2006		2006-2007	
	All HS	TRAVIS	All HS	TRAVIS
As long as I can remember	39.6%	20.5%	39.1%	16.3%
When I was a child	13.0%	9.8%	12.0%	12.9%
In middle/junior high school	23.7%	39.8%	21.0%	23.6%
In high school	20.9%	26.5%	25.3%	44.4%
I've never thought about college as an option after high school.	2.9%	3.4%	2.5%	2.8%

Items 30-35. To which of the following have you submitted applications; to which of the following have you already been accepted?

	2004-2005		Applied 2005-2006		2006-2007	
	All HS	TRAVIS	All HS	TRAVIS	All HS	TRAVIS
	2-yr college	25.4%	24.9%	54.5%	57.1%	49.8%
4-yr college	59.9%	25.3%	68.0%	54.1%	69.1%	61.9%
Business/technical/ vocational school	8.1%	13.2%	14.7%	20.7%	13.8%	25.4%

	2004-2005		Accepted 2005-2006		2006-2007	
	All HS	TRAVIS	All HS	TRAVIS	All HS	TRAVIS
	2-yr college	21.1%	20.8%	45.2%	35.8%	44.4%
4-yr college	50.6%	15.5%	56.5%	35.1%	59.0%	50.8%
Business/technical/ vocational school						

For those students who plan to attend a school for postsecondary education or certification:

Item 38. *Will you be the first person in your immediate family to attend college?*

	2005-2006		2006-2007	
	ALL HS	TRAVIS	ALL HS	TRAVIS
“Yes”	27.9%	52.1%	29.1%	60.8%

Item 39. *Which type of school are you planning to attend within the next year?*

	In Texas			
	2005-2006		2006-2007	
	ALL HS	TRAVIS	ALL HS	TRAVIS
2-yr college	40.9%	42.1%	38.5%	33.3%
4-yr college	61.2%	43.6%	60.1%	51.9%
Business/technical/vocational school	14.9%	21.8%	11.9%	17.5%

Out of State	
2005-2006	

Item 41. How important is each of the following in choosing a college?

	2005-2006		2006-2007	
	ALL HS	TRAVIS	ALL HS	TRAVIS
College expenses	**	**	2.4	2.7
Availability of financial aid	**	**	2.4	2.7
Availability of specific courses or curriculum	**	**	2.6	2.7
Reputation of the college in athletic programs	**	**	1.8	2.2
Social life at the college	**	**	2.2	2.4
Ability to live at home and attend college	**	**	1.8	2.5
Job or employment placement record of the college	**	**	2.1	2.5
Reputation of the college in academic programs	**	**	2.2	2.6
Easy admission standards	**	**	2.5	2.5
Ability to take courses online	**	**	2.0	2.3

Note: Scores range from 1 (not important) to 3 (very important).

For those students without plans to attend postsecondary education within the next year:

Item 42. If you are not planning to pursue further education at this time, what are your primary reasons?

	2004-2005		2005-2006		2006-2007	
	ALL HS	TRAVIS	ALL HS	TRAVIS	ALL HS	TRAVIS
Cannot afford.	33.6%	40.4%	25.0%	33.3%	25.9%	26.2%
Childcare responsibilities.	7.3%	8.7%	6.5%	9.1%	7.8%	4.8%
Don't like school.	15.9%	14.4%	13.6%	9.1%	15.8%	0.0%
Low grades/scores.	28.4%	17.3%	23.7%	30.3%	19.8%	14.3%
Not academically prepared.	17.5%	19.2%	13.1%	19.7%		

Item 43. *If you are not planning to pursue further education at this time, do you intend to pursue it at a later time?*

	2005-2006		2006-2007	
	ALL HS	TRAVIS	ALL HS	TRAVIS

APPENDIX

Table A.1. Response Rate and Respondent Demographic Characteristics

Seniors Enrolled	# Surveys	Initial Response Rate	African Am	Hispanic	White
---------------------	--------------	-----------------------------	---------------	----------	-------