



2006-2007 AISD Parent Survey Results

Sunset Valley Elementary School

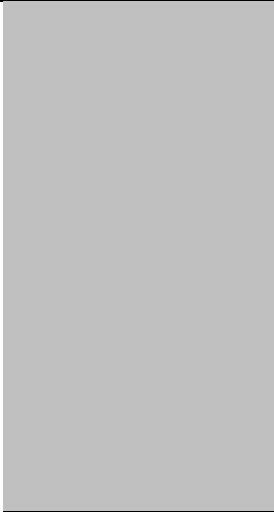
The following report contains the results of the 2006-2007 AISD Parent Survey for your campus and all AISD schools at your level. The first section of this report provides a comparison of the campus demographics and the demographics reported by parents who responded to the survey from your campus. The next section describes the percentages of

How many parents responded to the survey in 2005-2006 and 2006-2007, and how does this compare to the number of students in the population each year?

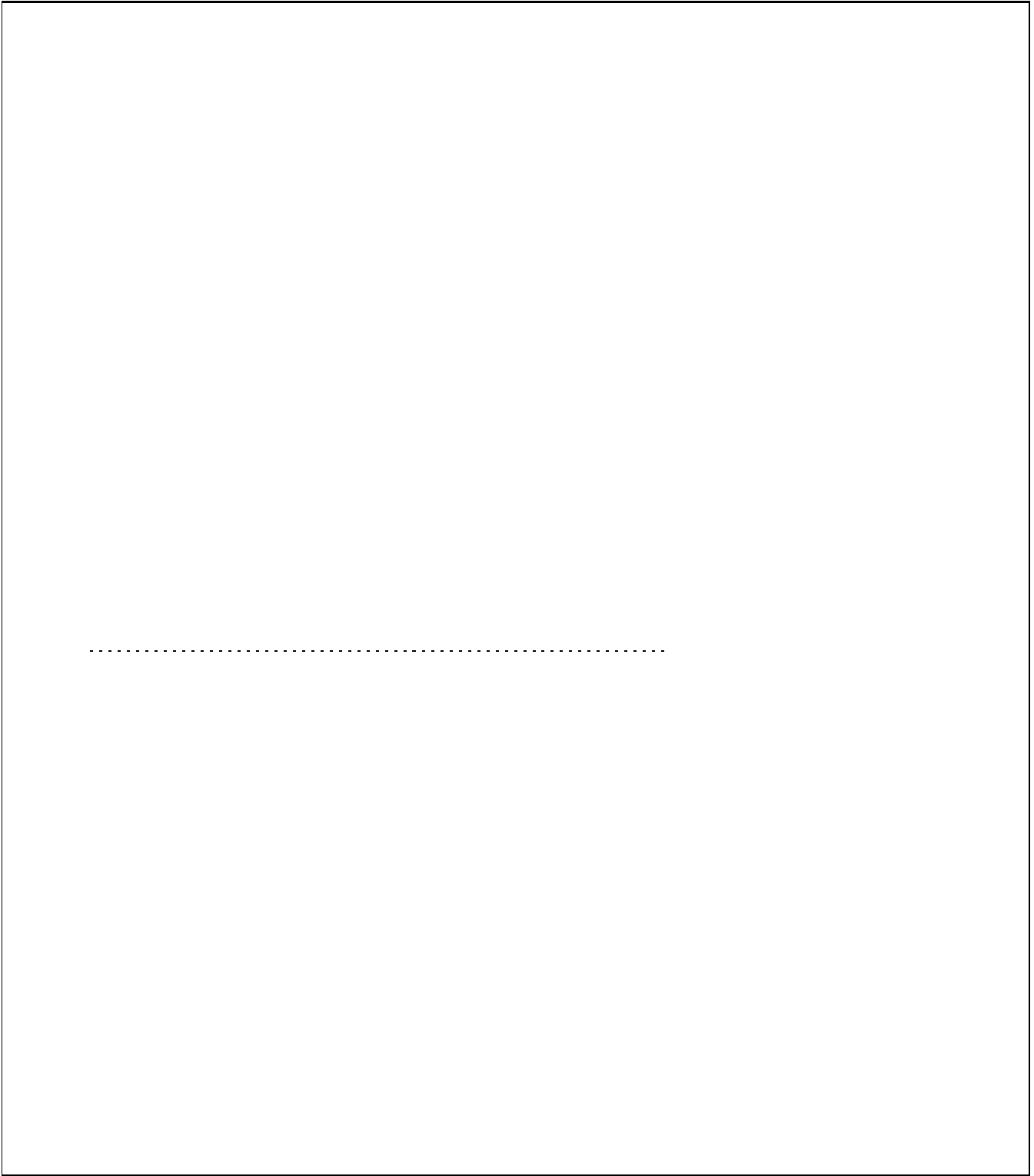
	Campus	District EL	District MS	District HS
	132			
	477			
	<i>27.7%</i>			
	154			
	439			
	<i>35.1%</i>			

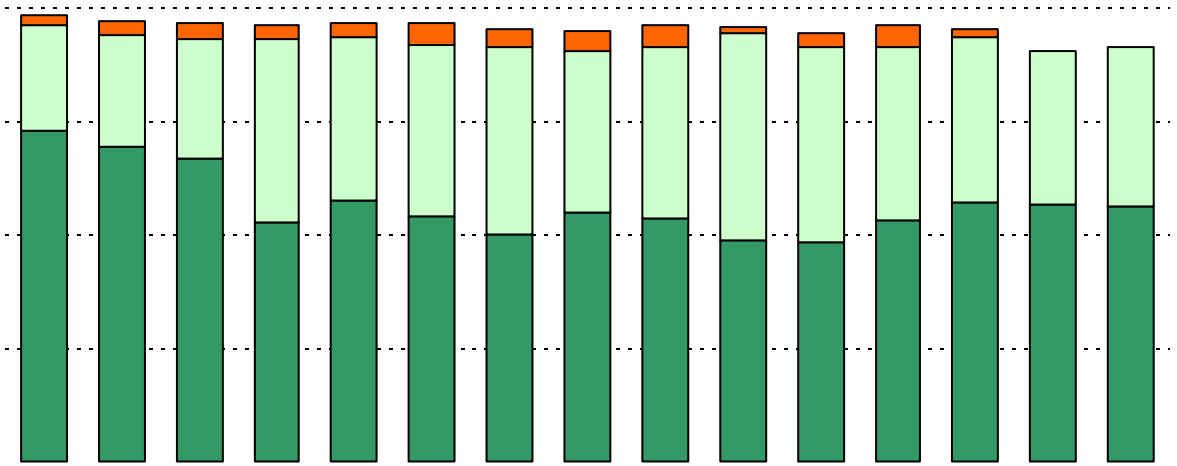
% of Students, as distribution of the student population?		ty,
Asian	1.4%	
Hispanic	78.6%	
Native American	0.7%	
White	15.5%	

% of Students, as

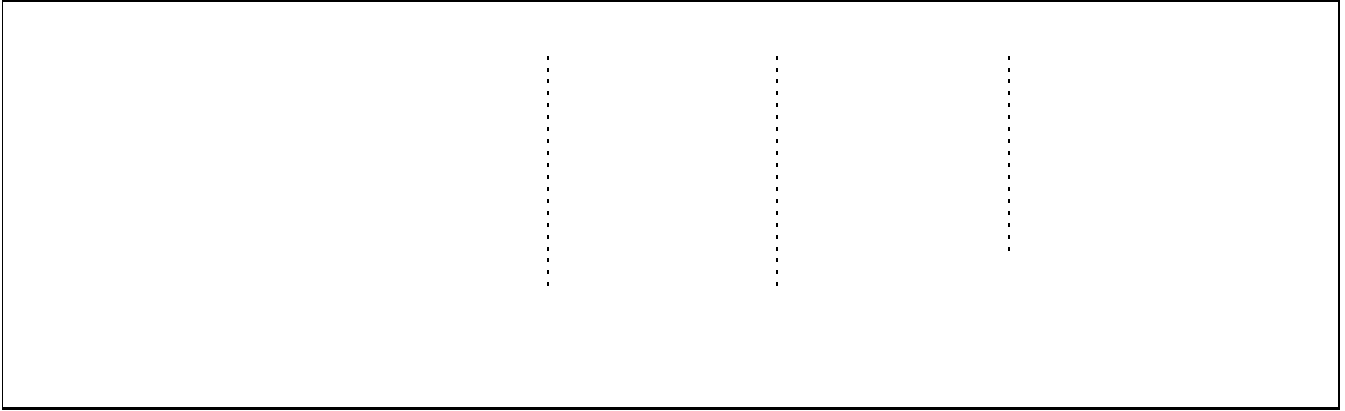


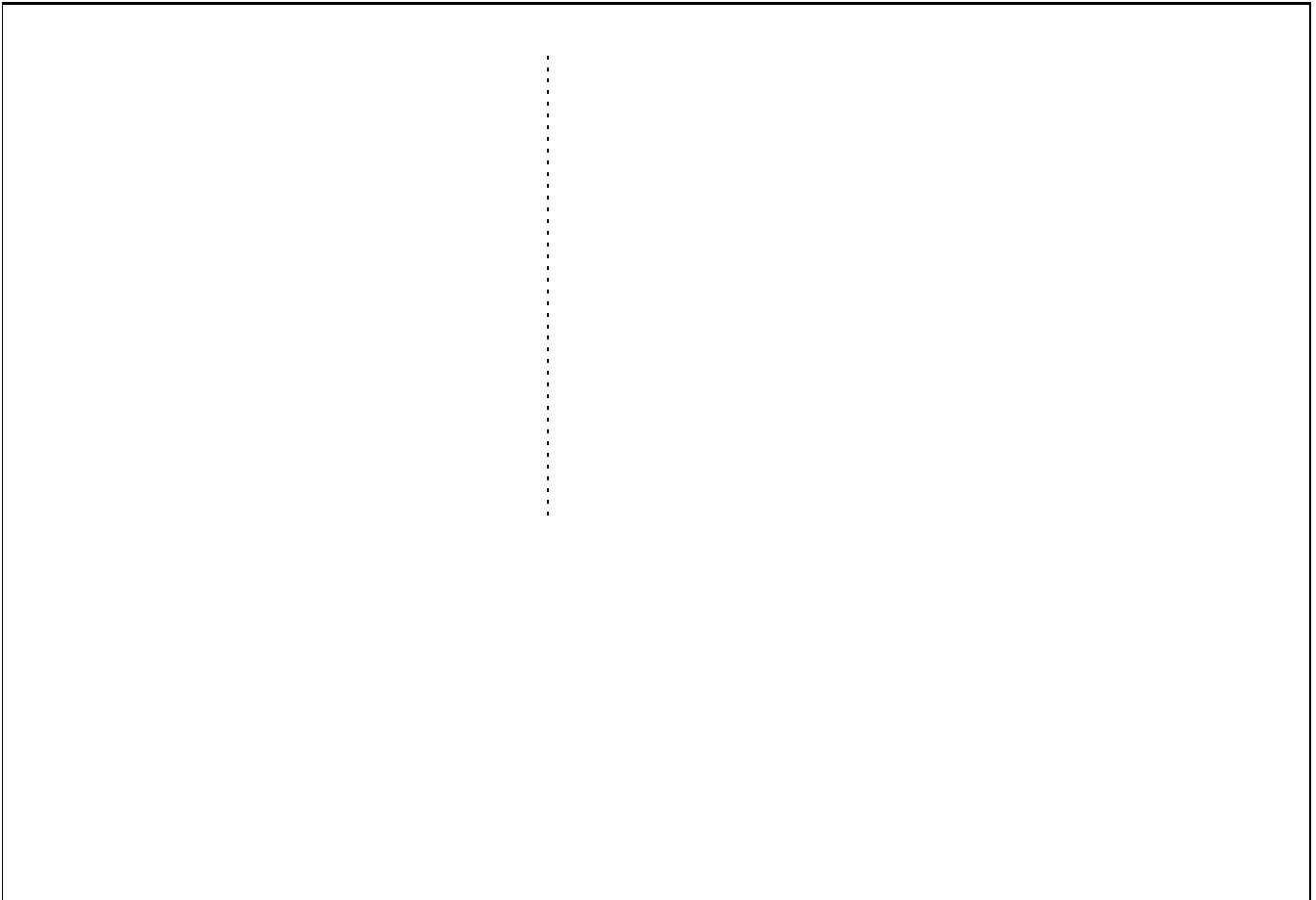
USING THE RESULTS OF THE AISD PARENT SURVEY





<p>.....</p> <p>.....</p> <p>.....</p> <p>.....</p>





**Required
curriculum**

.....

.....

.....

.....

.....

.....

.....

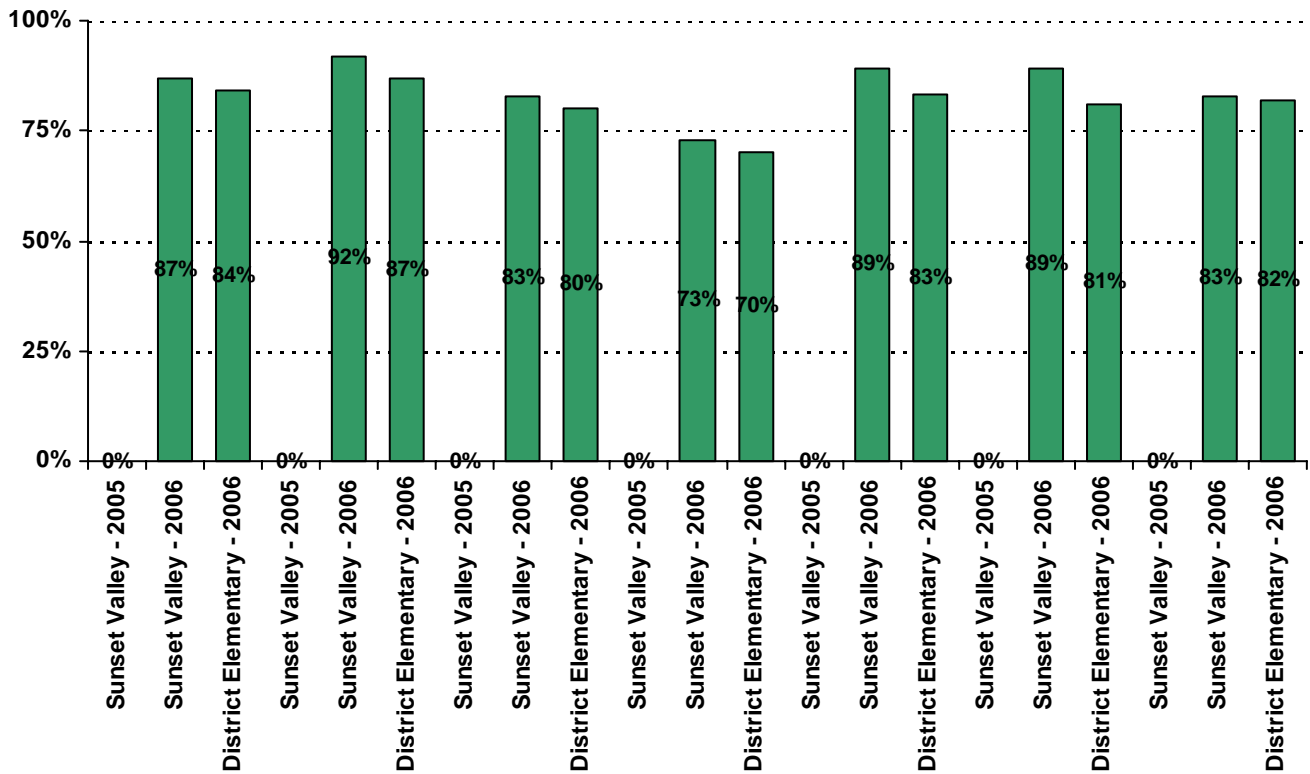
.....

.....

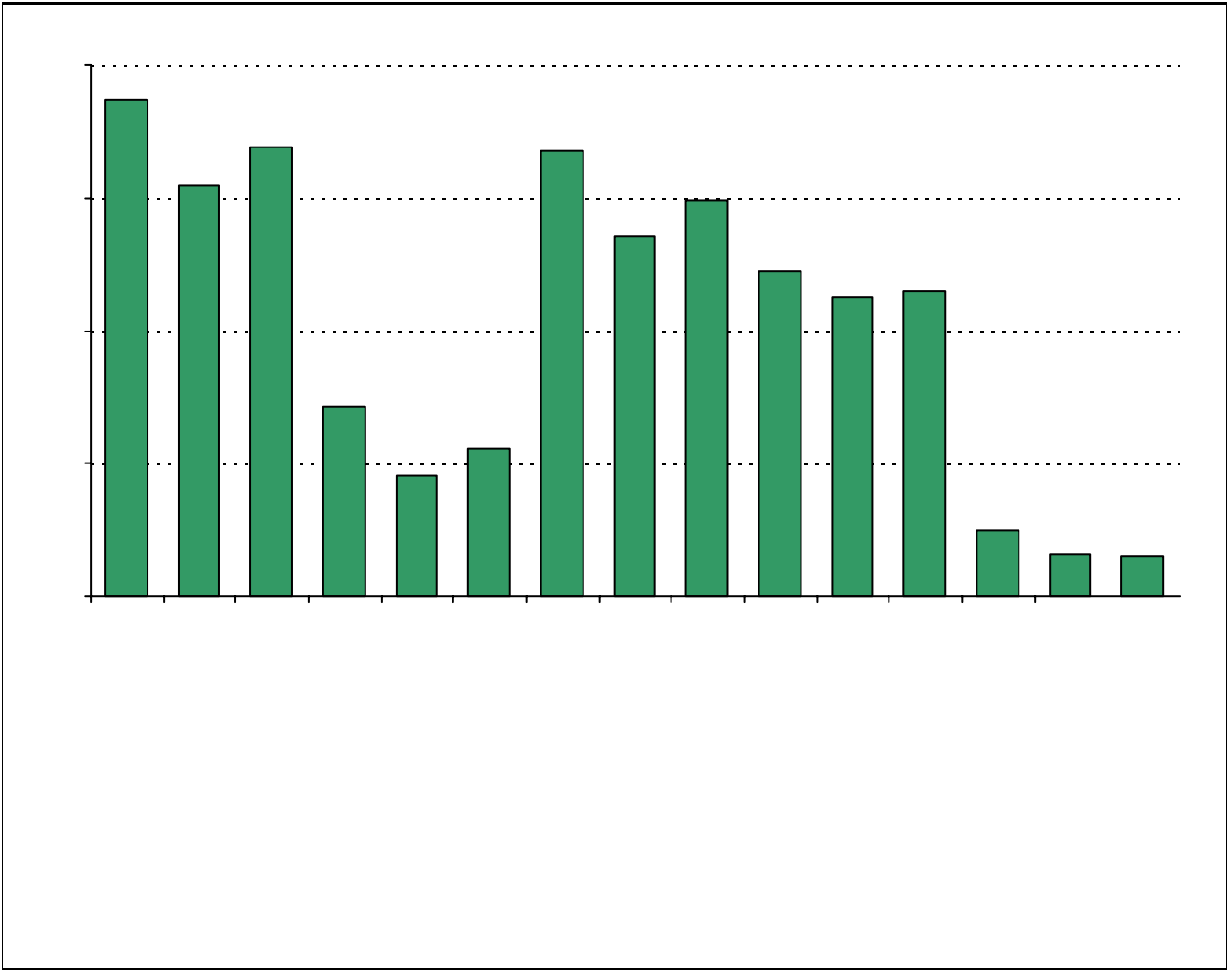
.....



19. Which of the following activities do you participate in at your child's school:*



* Item(s) #17, #18, #19 added to the survey in 2006



Item Response Details

Number of Sunset Valley Elementary School Parent Responses, by Response Option

		Strongly Agree	Agree	Disagree	Strongly Disagree	Don't Know/NA
4.	n = 107		2	105		
5a.	n = 138	73	37	5	8	15
5b.	n = 131	55	35	4	7	30
5c.	n = 132	63	40	4	6	19
5d.	n = 133	78	40	9	4	2
5e.	n = 142	93	31	5	9	4
6a.	n = 133	65	39	2	9	18
6b.	n = 124	43	38	3	5	35
6c.	n = 125	52	34	4	5	30
6d.	n = 126	62	39	3	4	18
6e.	n = 135	90	32	4	4	5
7a.	n = 134	56	50	4	4	20
7b.	n = 121	42	41	1	5	32
7c.	n = 117	43	34	6	3	31
7d.	n = 122	49	40	3	4	26
7e.	n = 143	91	37	5	8	2
8a.	n = 135	58	32	3	8	34
8b.	n = 123	42	30	3	6	42
8c.	n = 123	46	31	6	5	35
8d.	n = 121	42	32	4	5	38
8e.	n = 138	81	29	7	7	14
9a.	n = 139	76	37	5	7	14
9b.	n = 127	59	32	4	7	25
9c.	n = 129	65	34	4	5	21
9d.	n = 131	75	36	4	6	10
9e.	n = 139	93	33	5	4	4
9f.	n = 127	69	28	5	7	18
10.	n = 135	50	28	13	10	34
11.	n = 142	88	37	6	7	4
12.	n = 134	84	35	4	5	6

Number of Sunset Valley Elementary School Parent Responses, by Response Option
(Continued)

		Strongly Agree	Agree	Disagree	Strongly Disagree	Don't Know/NA
13a.	n = 143	86	40	6	8	3
13b.	n = 139	79	46	8	5	1
13c.	n = 135	75	45	4	8	3
14a.	n = 138	62	36	11	10	19
14b.	n = 141	88	35	8	7	3
14c.	n = 137	65	41	4	10	17
15a.	n = 145	96	32	7	8	2
15b.	n = 136	72	39	5	5	15
15c.	n = 138	68	34	8	8	20
15d.	n = 133	61	35	8	7	22
15e.	n = 143	85	42	6	8	2
16a.	n = 129	24	23	6	11	65
16b.	n = 126	22	23	8	8	65
16c.	n = 128	29	22	6	9	62
16d.	n = 126	23	22	9	7	65
16e.	n = 125	24	21	7	9	64
17.	n = 145	85	29	8	8	15
18.	n = 146	97	35	4	8	2
		Yes	No			
19a.	n = 131	107	24			
19b.	n = 137	122	15			
19c.	n = 125	97	28			
19d.	n = 131	83	48			
19e.	n = 130	107	23			
19f.	n = 134	106	28			
19g.	n = 134	102	32			
20.	n = 154	<i>Item 20 did not use the "Strongly Agree" to "Strongly Disagree" scale. Numbers below reflect the number of parents selecting each goal. These numbers will not sum to the total number of item respondents because parents may select multiple goals.</i>				
		High School diploma	Certificate/ Associates degree	Bachelors degree	Graduate/ Professional degree	Military service
		119	35	104	87	12