

2.1%
 3.2%
 82.1%
 1.1%
 11.6%

St. Elmo Elementary School 0.0%
 5.4%

How many parents responded to the survey in 2005-2006 and 2006-2007, and how does this compare to the number of students in the population each year?

	Campus	District EL	District MS	District HS
	148			
	443			
	33.4%			
	111			
	462			
	24%			

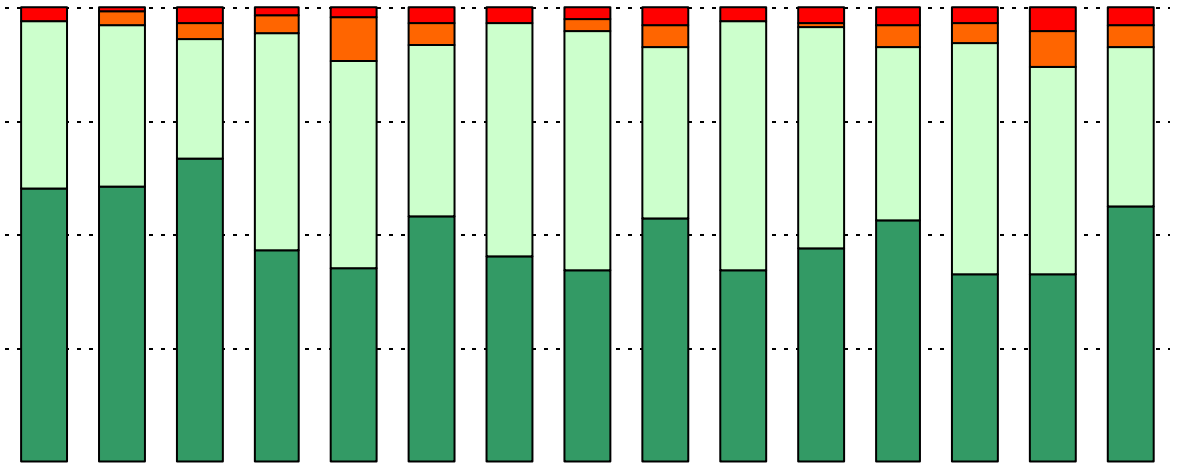
Ethnicity	

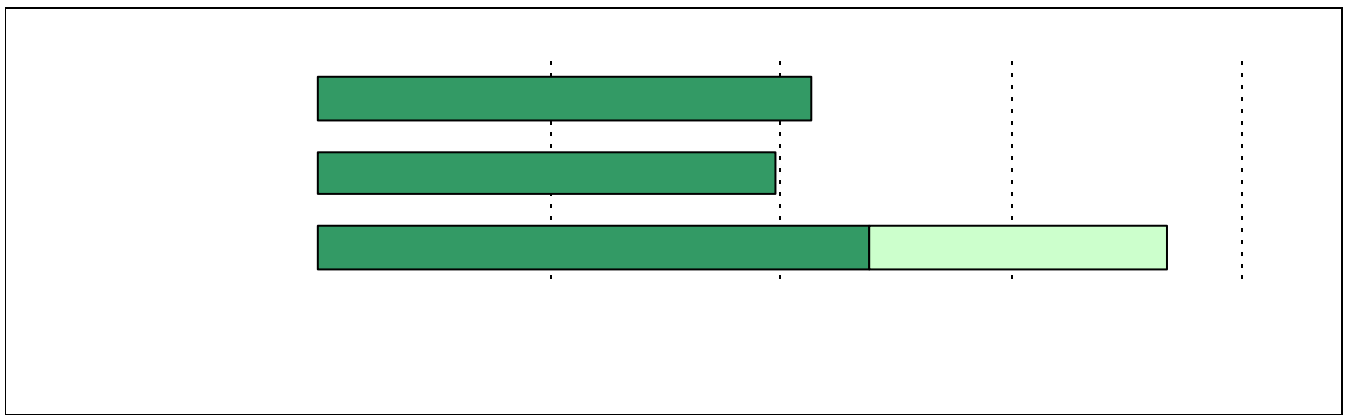
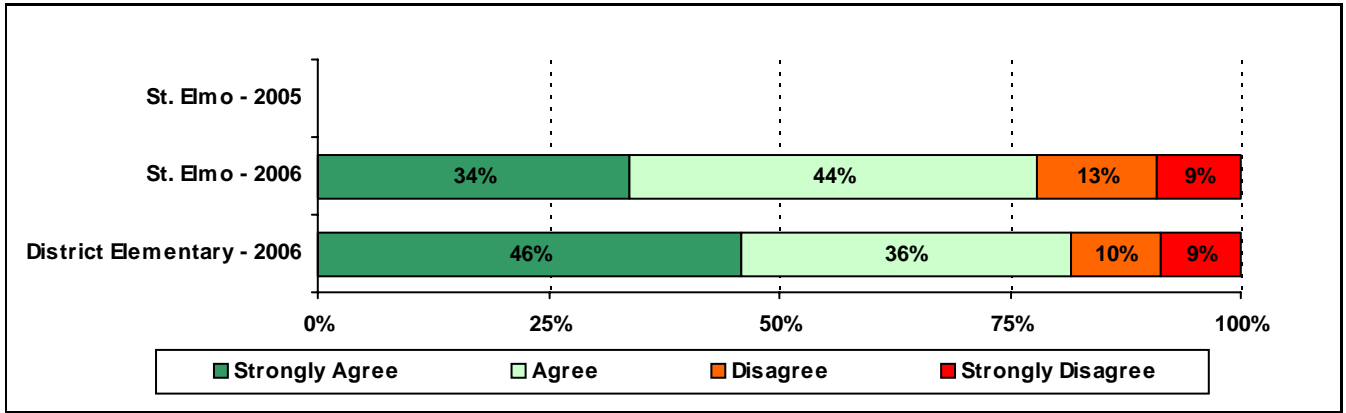
What did parents report as their child's grade, and how does this compare to the grade level
 -0which your school's results have gathered over the 6 or time period that they are in them

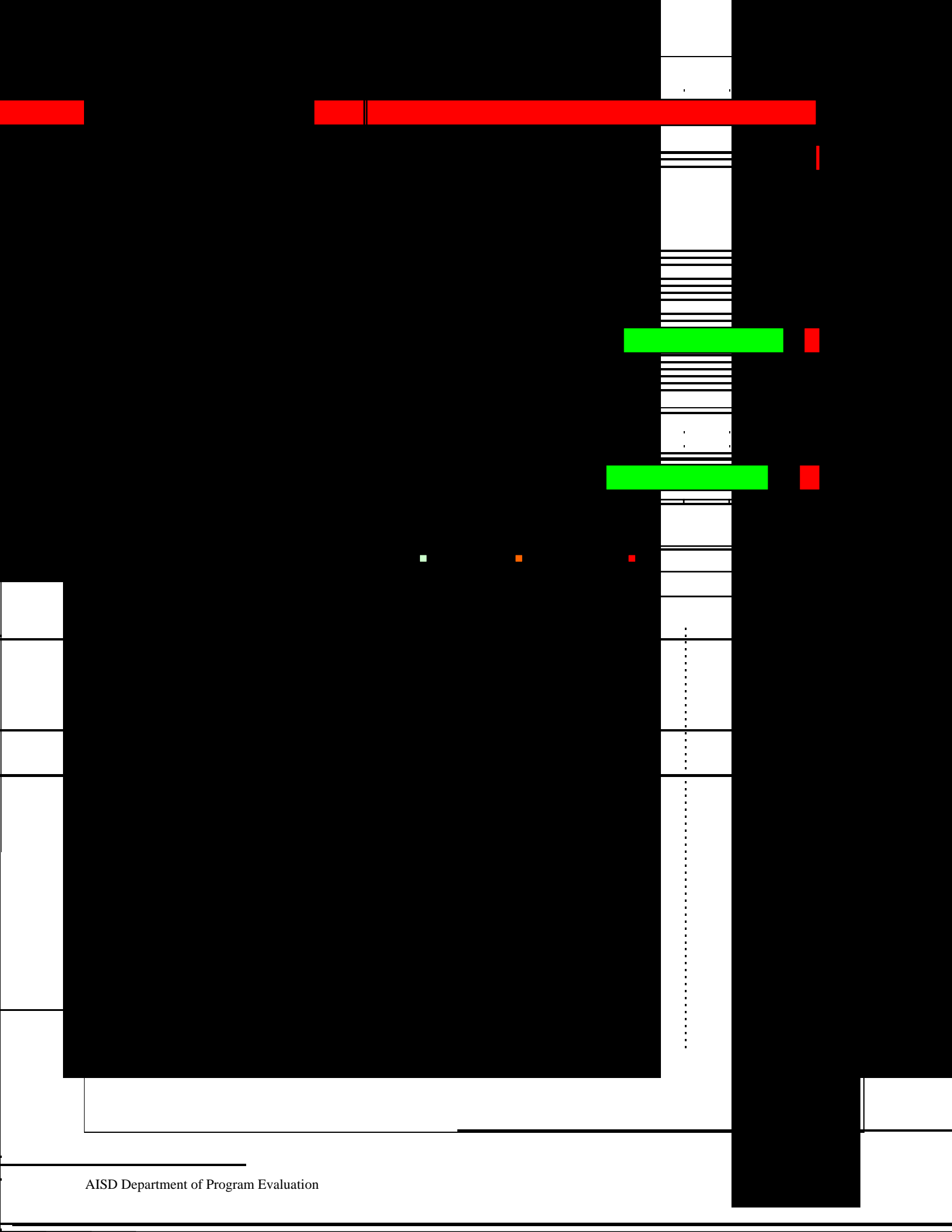
Grade	% of Students, as Reported by Campus Parent Respondents	% of Students in Campus Population
EC	N/A	N/A
PK	3.8%	16.2%
K	18.9%	14.7%
1st	12.3%	13.4%
2nd	16.0%	13.6%
3rd	20.8%	14.1%
4th	12.3%	16.0%
5th	16.0%	11.9%
6th	N/A	N/A

Note: Student population data are based on Fall PEIMS data submitted by the district to TEA, and may differ from the official AEIS report.

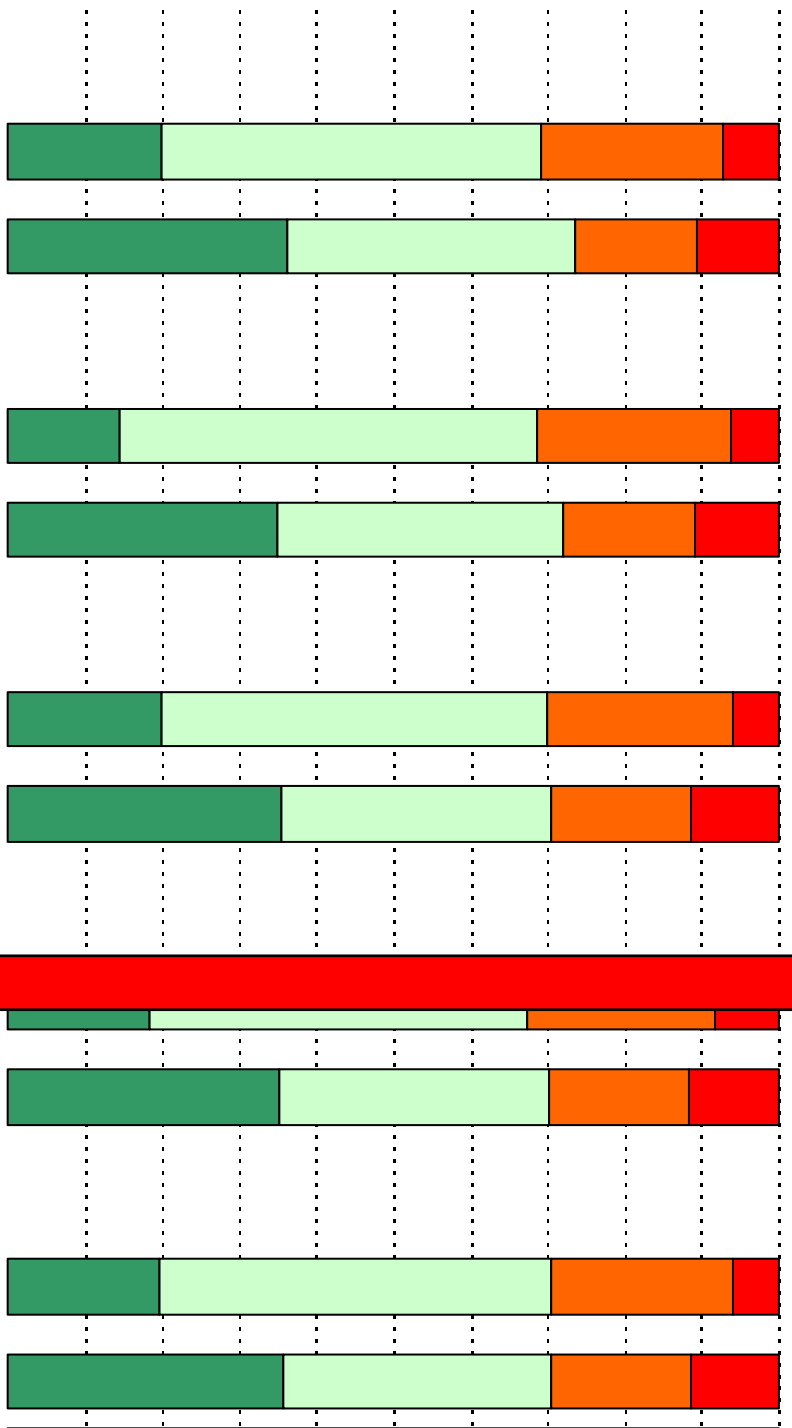
USING THE RESULTS OF THE AISD PARENT SURVEY



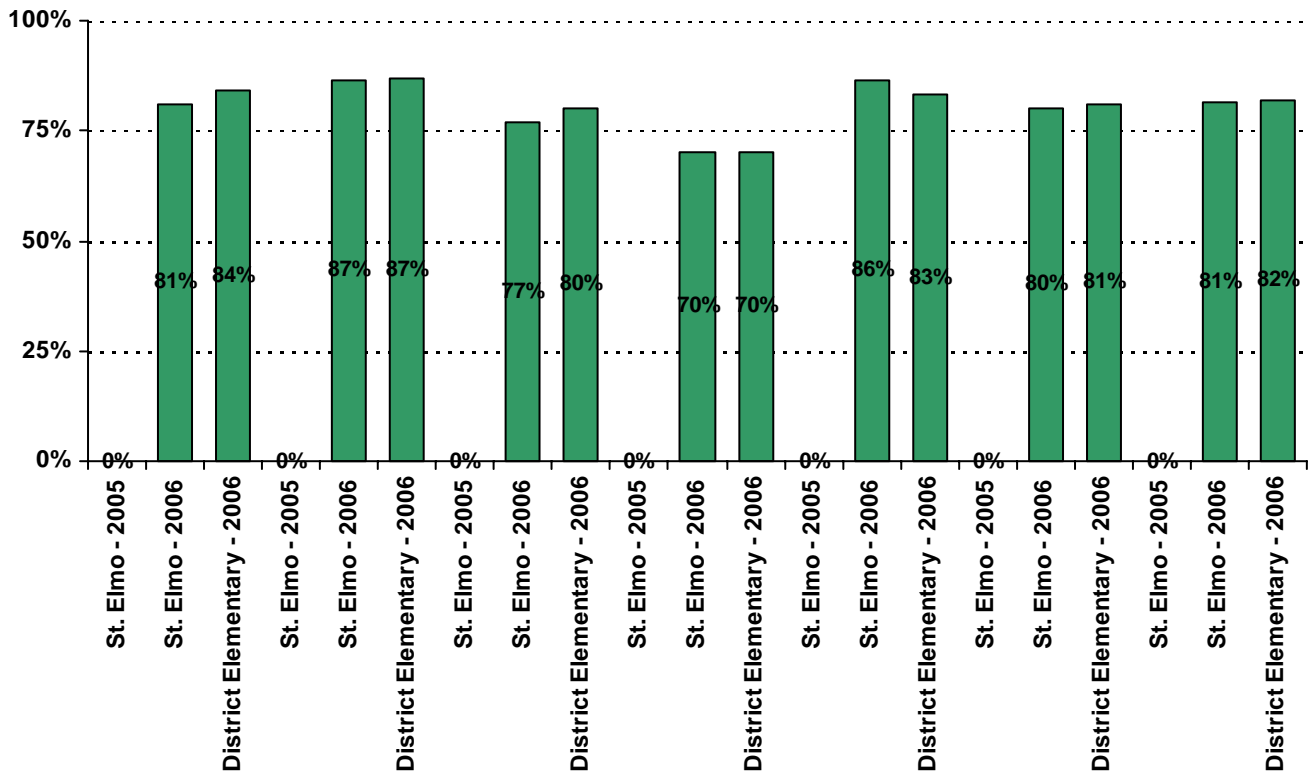




**Required
curriculum**



19. Which of the following activities do you participate in at your child's school:*



* Item(s) #17, #18, #19 added to the survey in 2006

.....

.....

.....

.....

Item Response Details

Number of St. Elmo Elementary School Parent Responses, by Response Option

	Strongly Agree	Agree	Disagree	Strongly Disagree	Don't Know/NA
--	----------------	-------	----------	-------------------	---------------

3a.	n = 106	33	51	9	5	8
		44	40	3	1	11
3c.	n = 100	32	44	2	1	21
3d.	n = 103	40	47	7	2	7
3e.	n = 106	67	29	4	1	5
6a.	n = 101	38	42	7	5	9
6b.	n = 99	41	42	1	3	12
6c.	n = 99	33	41	2	2	21
6d.	n = 99	36	39	8	2	14
6e.	n = 103	61	36	3	1	2

27 42 10 36 3 Agree 1T0T4 1 Tf11.5857 -1.6114 TD0.00

Number of St. Elmo Elementary School Parent Responses, by Response Option
(Continued)

		Strongly Agree	Agree	Disagree	Strongly Disagree	Don't Know/NA
13a.	n = 107	46	46	6	1	8
13b.	n = 106	40	50	5	1	10
13c.	n = 99	37	41	7	2	12
14a.	n = 106	31	45	12	1	17
14b.	n = 105	38	55	5	1	6
14c.	n = 100	31	51	7	1	10
15a.	n = 109	58	40	4	1	6
15b.	n = 104	41	44	3	2	14
15c.	n = 102	45	39	5	1	12
15d.	n = 100	42	40	3	1	14
15e.	n = 102	55	32	7	2	6
16a.	n = 100	11	27	13	4	45
16b.	n = 93	7	26	12	3	45
16c.	n = 95	10	25	12	3	45
16d.	n = 92	9	24	12	4	43
16e.	n = 92	10	26	12	3	41
17.	n = 108	49	40	8	1	10
18.	n = 104	57	37	4	1	5
		Yes	No			
19a.	n = 103	76	27			
19b.	n = 103	84	19			
19c.	n = 97	63	34			
19d.	n = 99	56	43			
19e.	n = 98	76	22			
19f.	n = 102	68	32			
19g.	n = 102	74	28			
20.	n = 111	<i>Item 20 did not use the "Strongly Agree" to "Strongly Disagree" scale. Numbers below reflect the number of parents selecting each goal. These numbers will not sum to the total number of item respondents because parents may select multiple goals.</i>				
		High School diploma	Certificate/ Associates degree	Bachelors degree	Graduate/ Professional degree	Military service
		93	45	85	65	8