

# Small Middle School

	91 1,111 <b>8.2%</b>
	100 1,139 <b>8.8%</b>

	0.3% 65.1%

	47.5%	32.7%
	26.3%	32.8%
	26.3%	34.5%
	0.0%	0.0%
	0.0%	0.0%
	0.0%	0.0%
	0.0%	0.0%

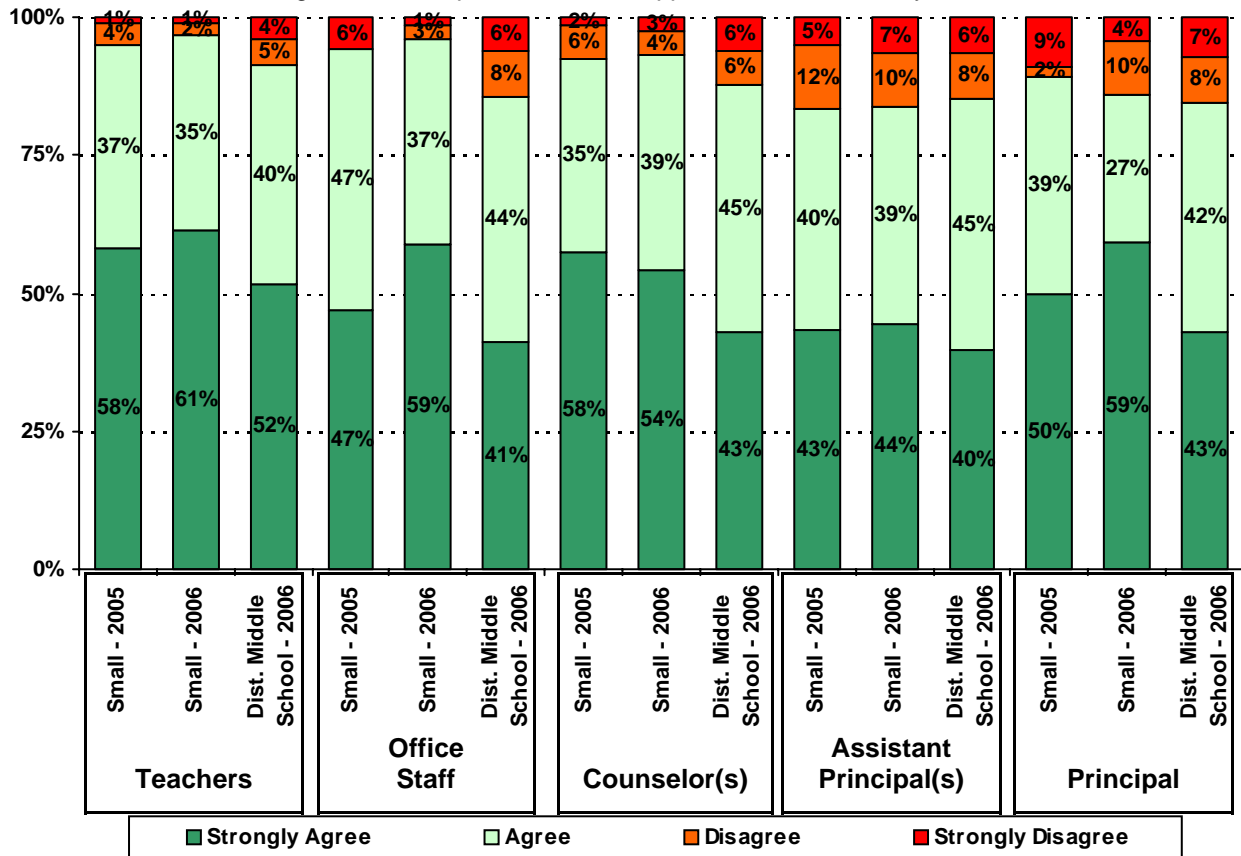
Note: Student population data are based on Fall PEIMS data submitted by the district to TEA, and may differ from the official AEIS report.

Each survey item is presented below, followed by a bar graph containing your school’s results for two years and this year’s results for all campuses at your level. You will be able to identify areas in which your school’s results have changed over time, and you will be able to compare the responses of your school’s parents to those of parents at your level district-wide.

Please examine your results to determine areas of strength and opportunities for improvement. Areas of strength can be identified by large percentages of parents who “Strongly Agree” or “Agree” with a statement. Opportunities for improvement can be identified by large percentages of parents who “Disagree” or “Strongly Disagree” with a statement. In addition, please look for patterns in which one staff category consistently receives more positive or negative responses than other staff categories. This will help you to identify opportunities for praise and areas in which

A blank sheet of white paper with a black border. Four horizontal dashed lines are drawn across the page, spaced evenly from top to bottom. The lines are composed of small black dots.

6. The following school staff provide me with opportunities for two-way communication.

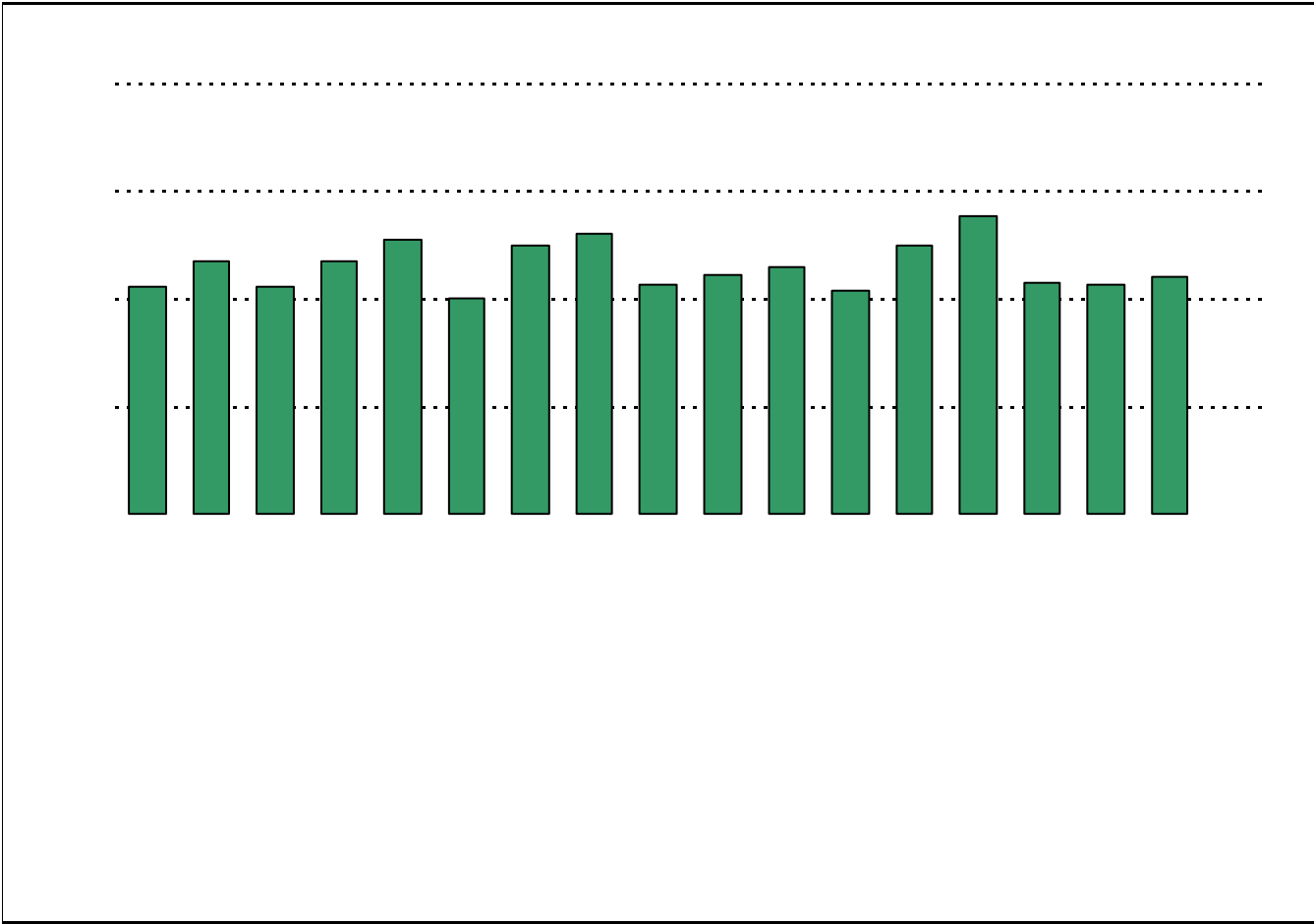


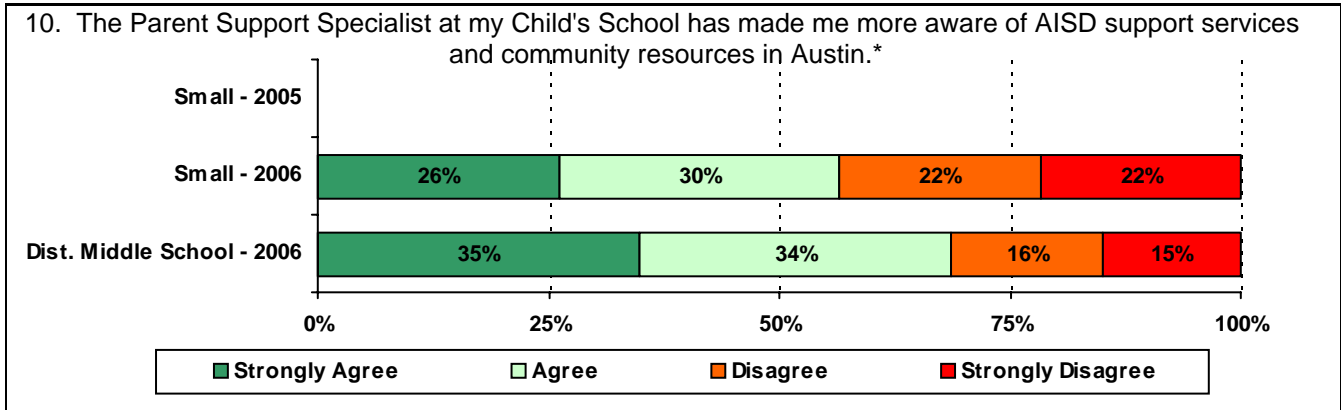
.....

.....

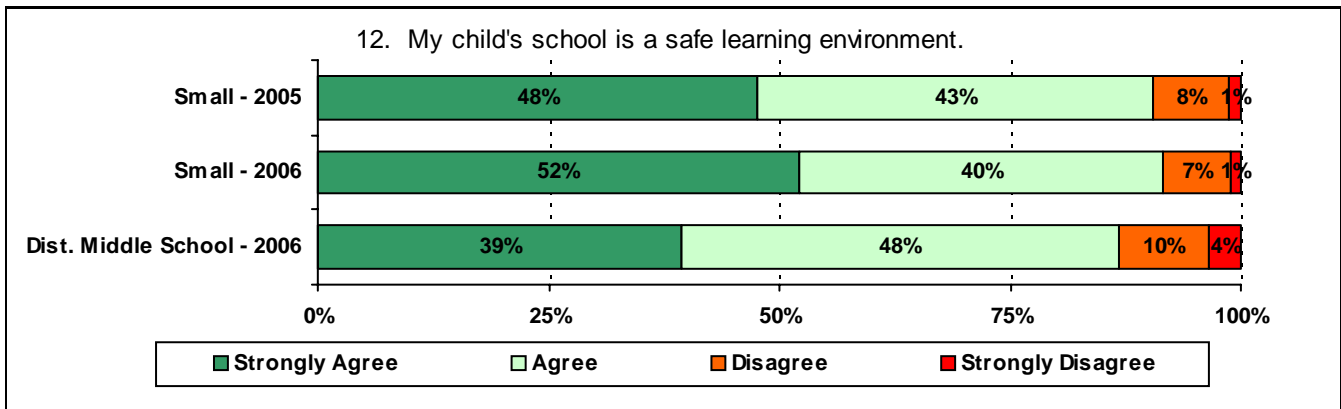
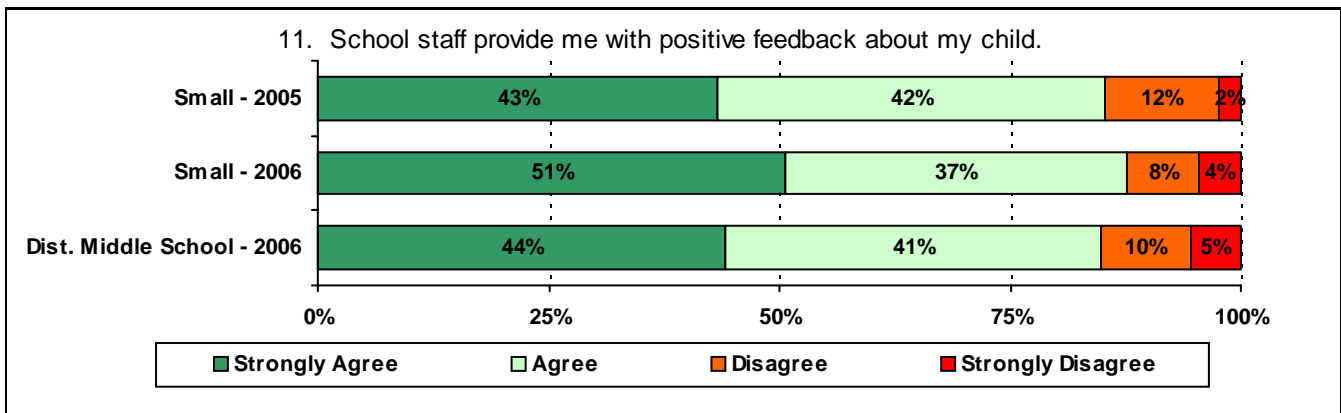
.....

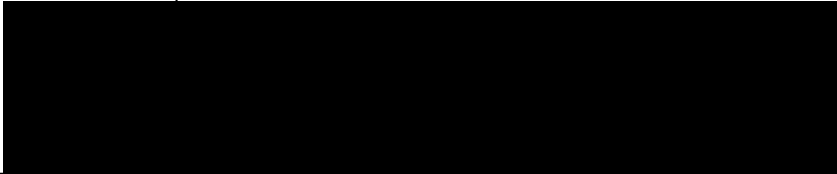
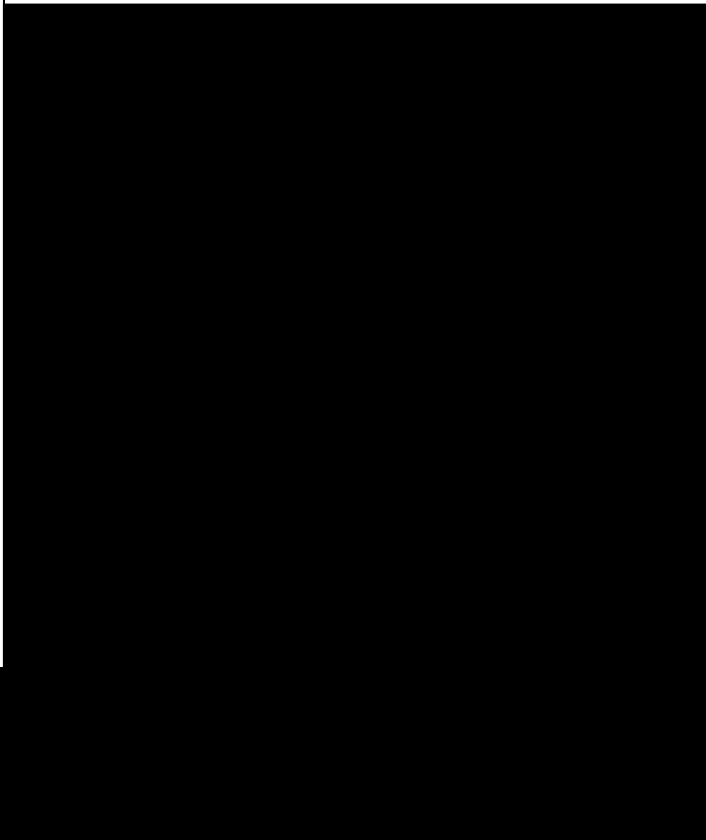
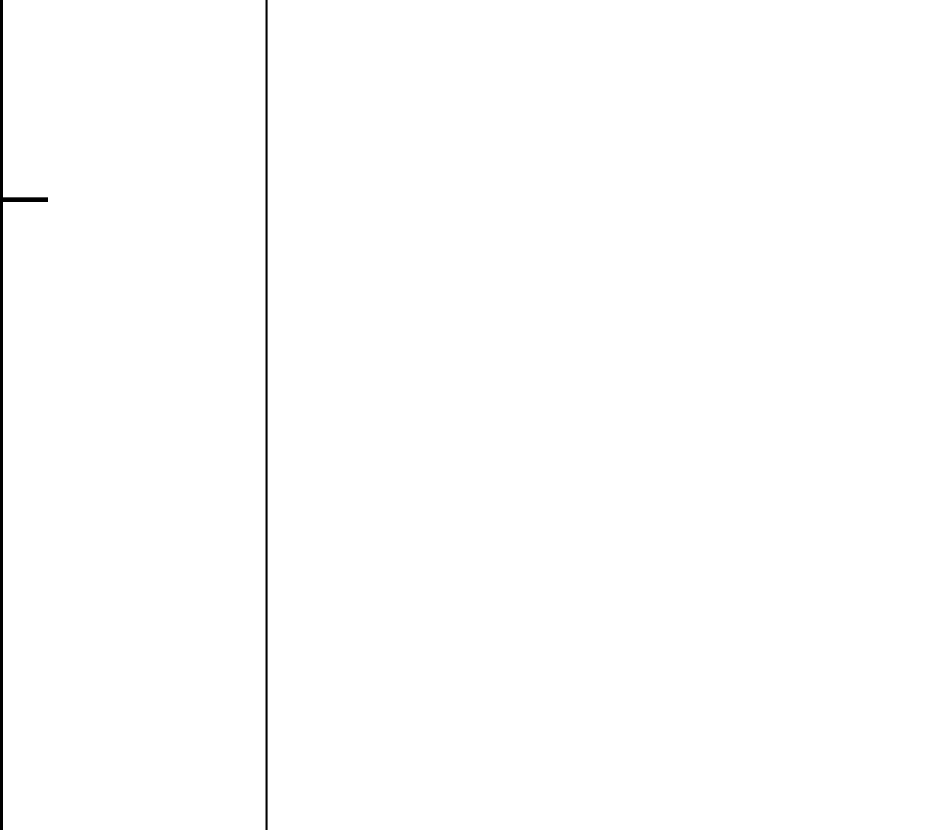
.....



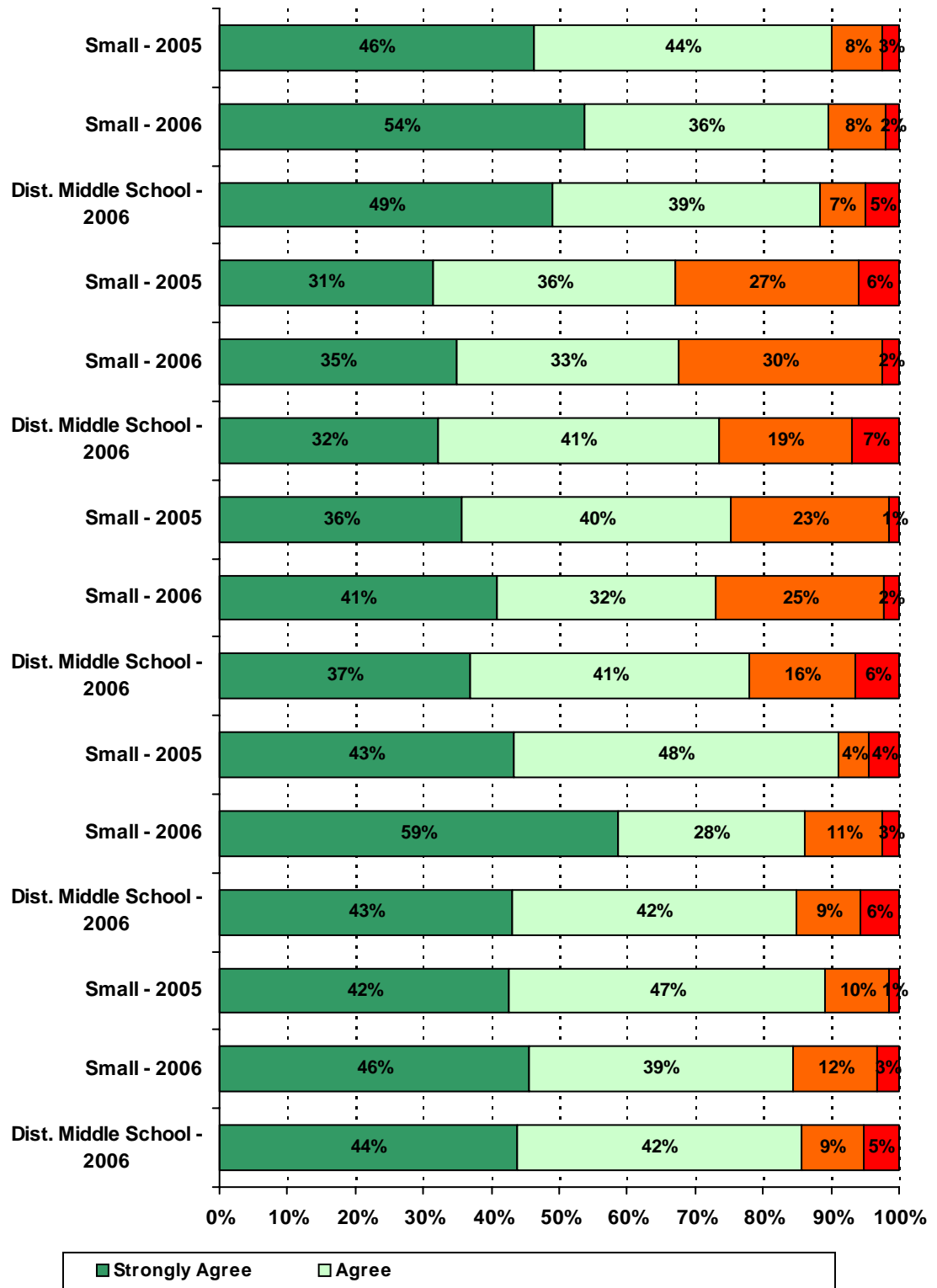


\* Item #10 was added to the survey in 2006

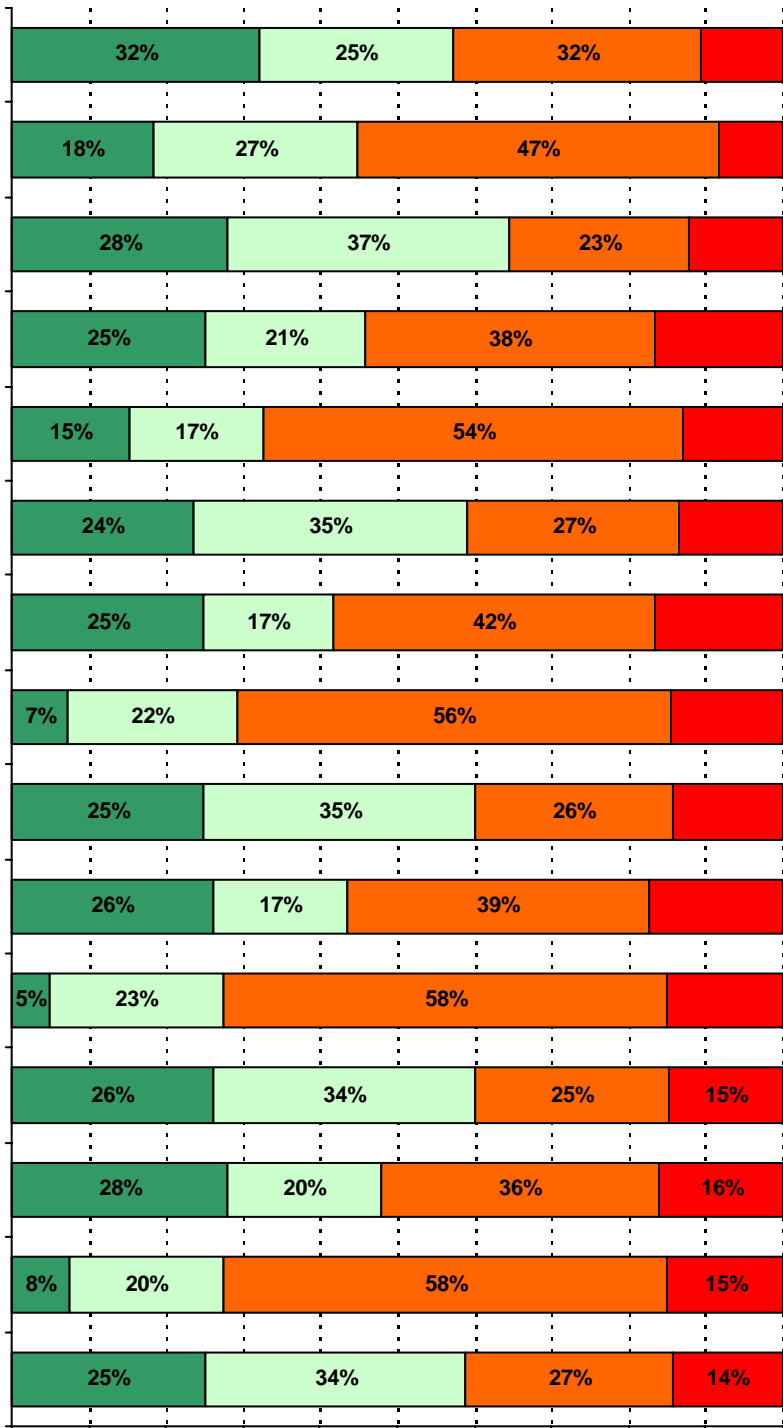




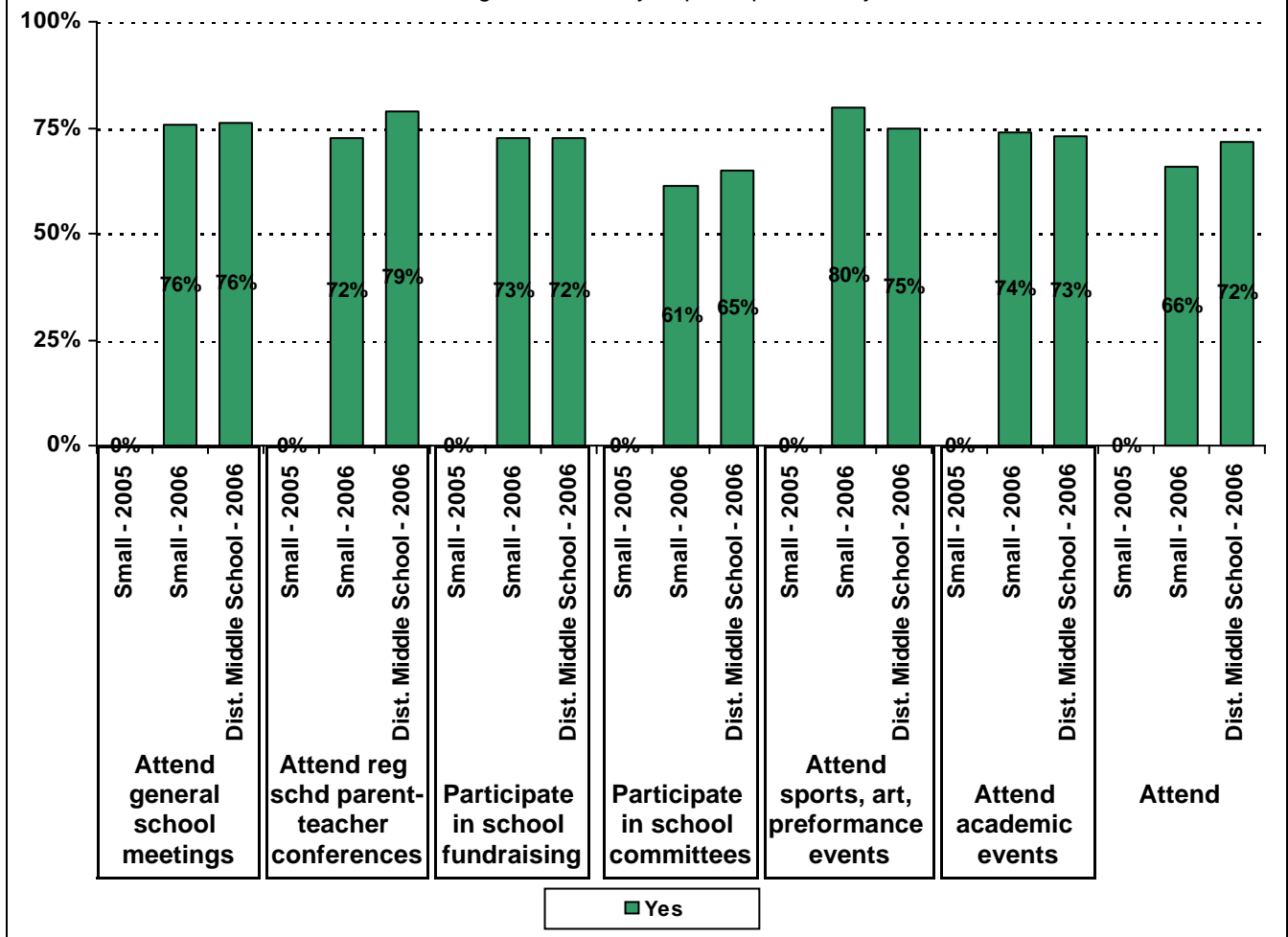
15. School staff provide me with enough of the following information about my child:





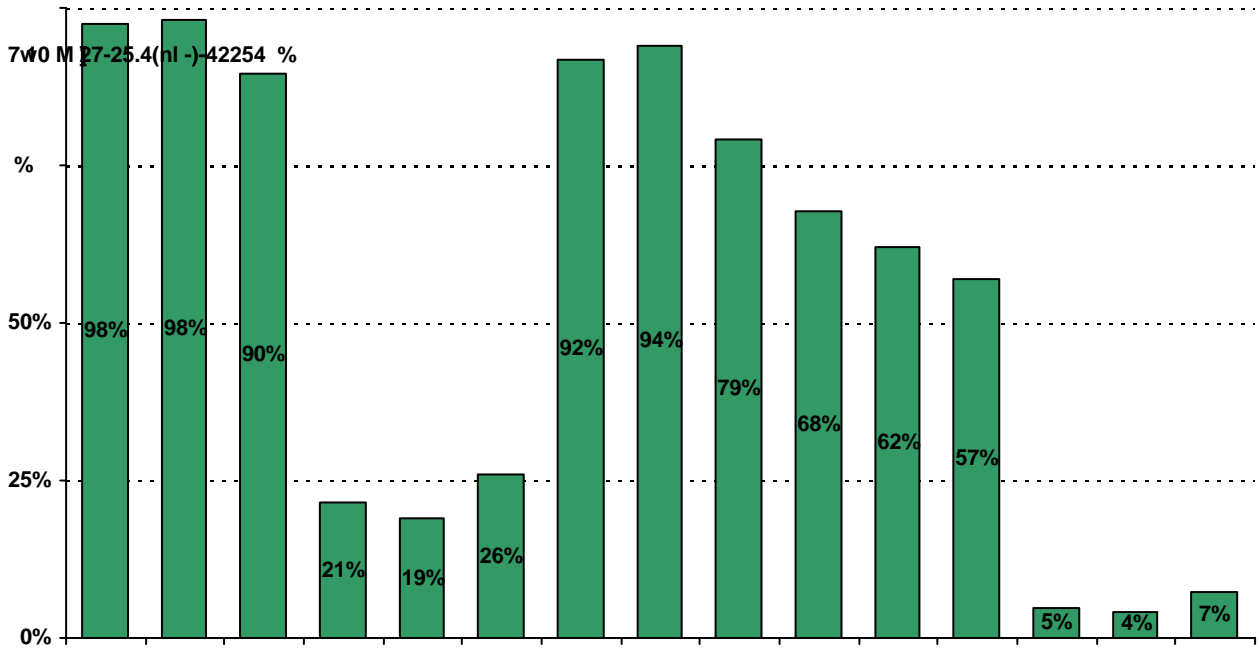


19. Which of the following activities do you participate in at your child's school:\*

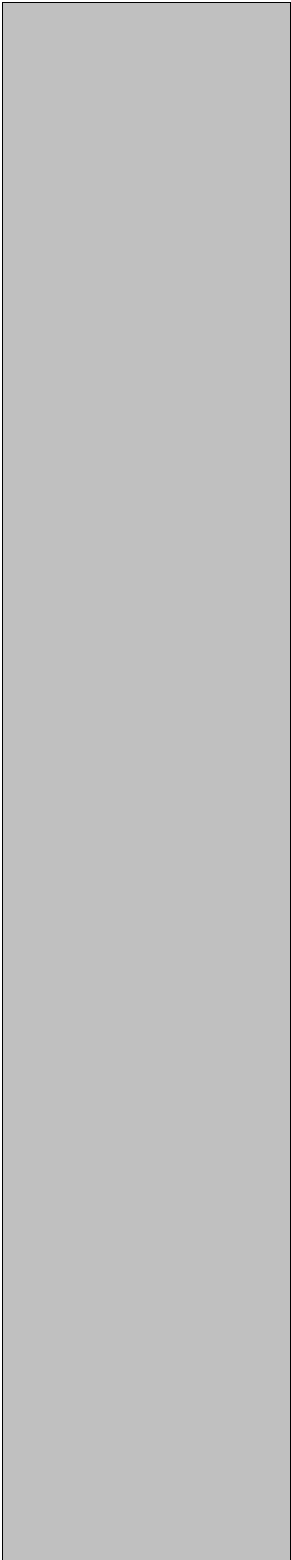


\* Item(s) #17, #18, #19 added to the survey in 2006

20. My goals for my child include the following plans:



Number of Small Middle School Parent Responses, by Response Option



51	18	4	1	23
34	24	5	2	30
49	25	2	0	20
55	30	1	1	8
50	43	1	1	1
42	19	7	3	25
27	24	6	4	35
40	29	3	2	23
46	29	2	1	20
59	34	2	1	2
35	21	7	4	28
25	22	10	5	33
34	25	6	3	27
29	23	5	3	35
54	34	3	2	4
31	16	7	1	40
23	17	7	3	46
41	19	3	1	33
24	20	0	3	49
47	26	2	2	20
49	20	0	2	27

Number of Small Middle School Parent Responses, by Response Option  
(Continued)

	56	34	3	2	4
	47	30	11	3	8
	40	35	8	6	7
	52	32	4	2	9
	51	38	3	2	4
	41	33	7	4	13
	52	35	8	2	2
	29	27	25	2	14
	38	30	23	2	5
	47	22	9	2	18
	41	35	11	3	9
	<i>Item 20 did not use the "Strongly Agree" to "Strongly Disagree" scale. Numbers below reflect</i>				