



2005-2006 AISD Parent Survey Results

Rodriguez Elementary School

The following report contains the results of the 2005-2006 AISD Parent Survey opportunities for improvement. Responses from other schools at your level and results for your campus from 2004-2005 are presented for comparison.

How many parents responded to the survey in 2004-2005 and 2005-2006, and how does this compare to the number of students in the population each year?

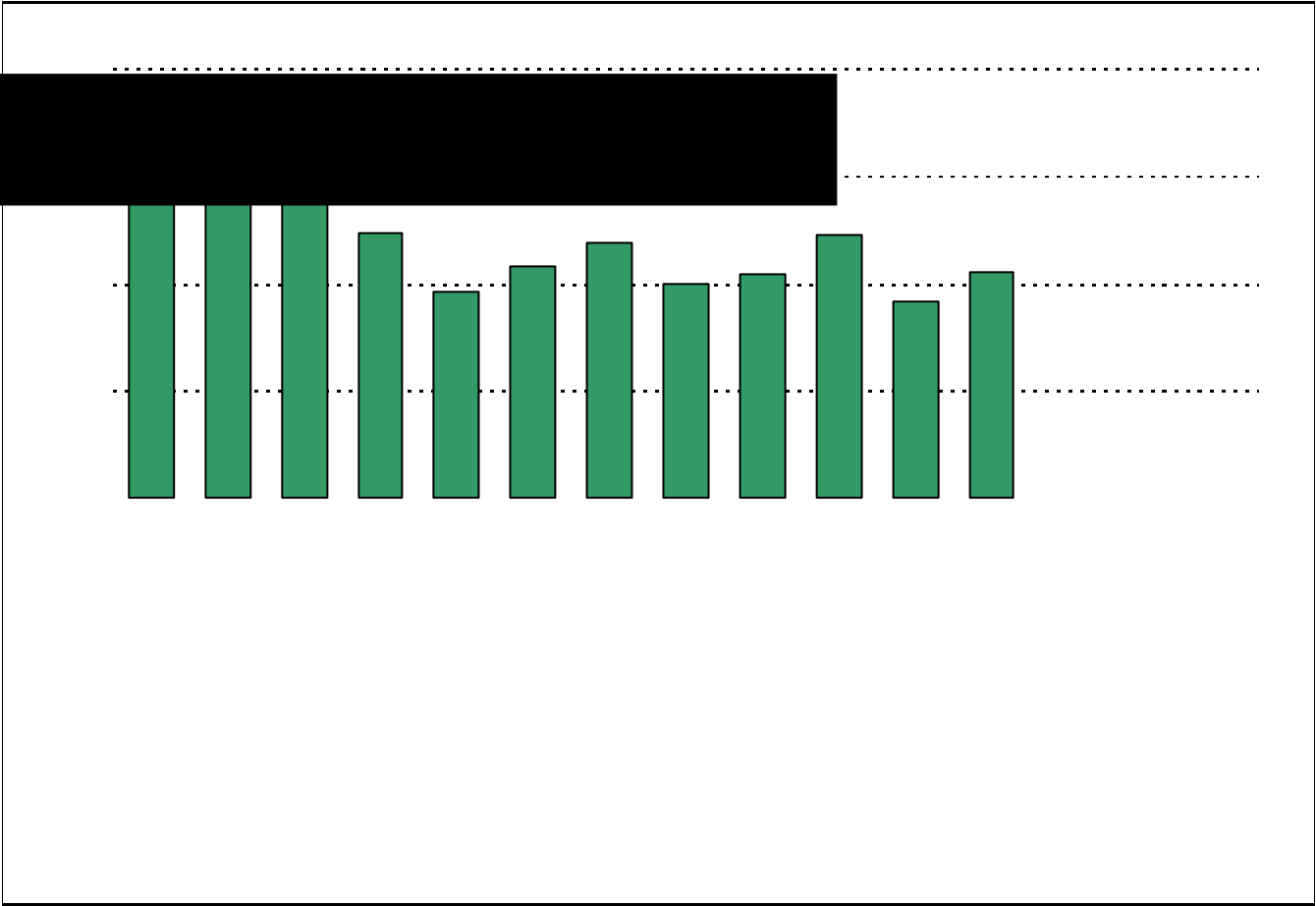
	Campus	District EL	District MS	District HS
2004-2005	204			
2005-2006	786			
	26%			
2004-2005	207			
2005-2006	922			
	22.5%			

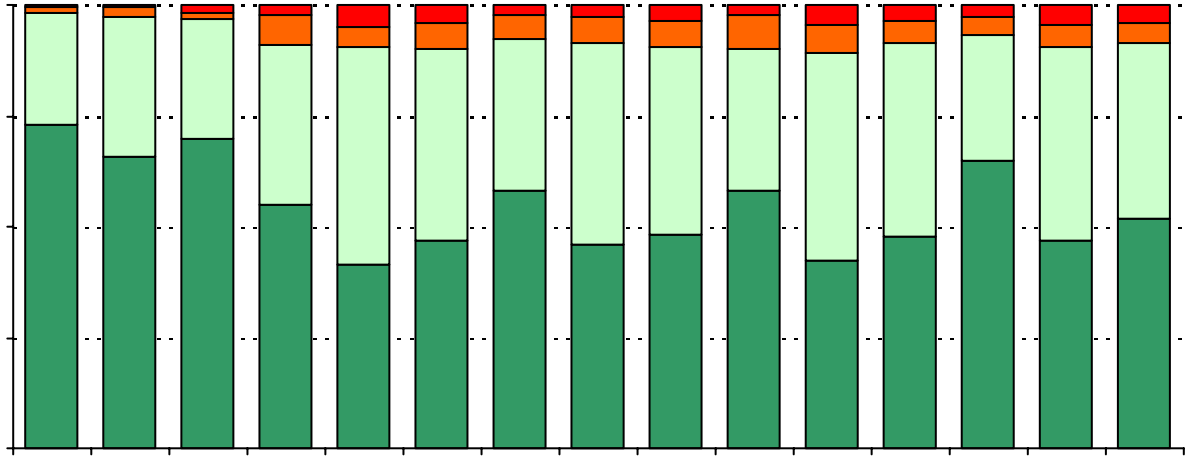
Note: The ratio of parent respondents to students is listed above as a percentage for ease of interpretation; however, it is the number of parents who responded per 100 students enrolled.

What did parents report as their child's ethnicity, and how does this compare to the ethnic distribution of the student population?

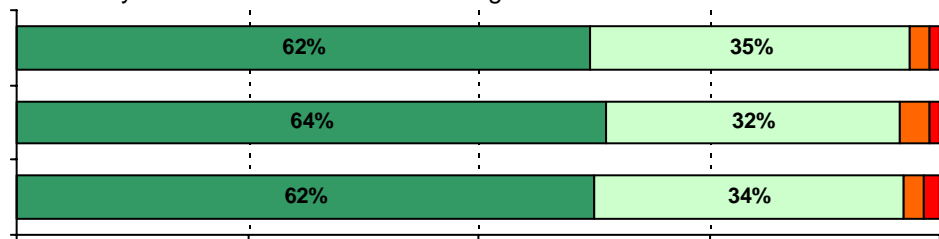
Ethnicity	% of Students, as Reported by Campus Parent Respondents	% of Students in Campus Population
Asian	14.4%	0.1%
Hispanic	81.7%	83.2%
Native American	0.7%	0.0%
White	3.3%	2.1%

USING THE RESULTS OF THE





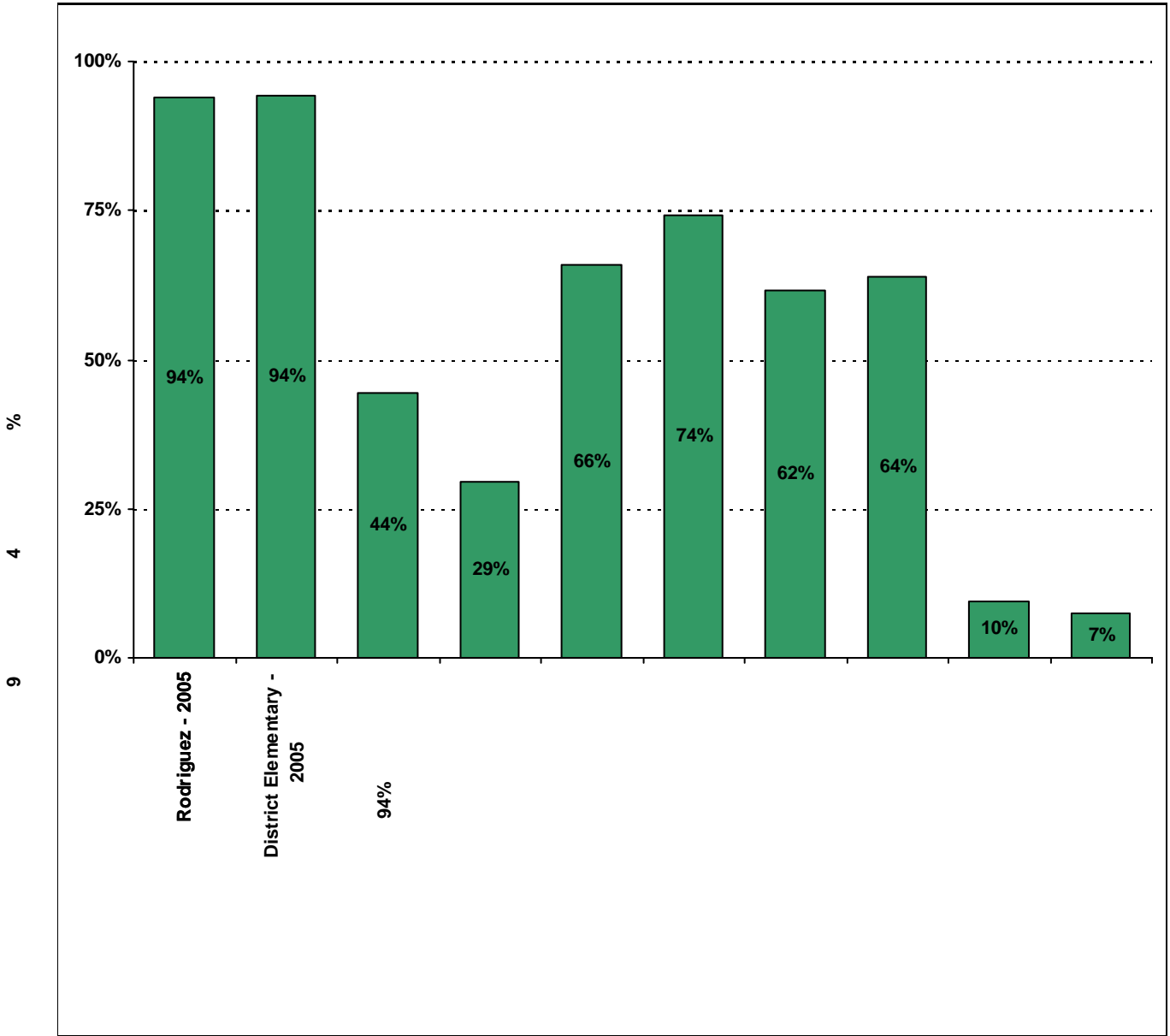
9. My child's school is a safe learning environment.



.....



Required



Item Response Details

Number of Rodriguez Elementary School Parent Responses, by Response Option

		Strongly Agree	Agree	Disagree	Strongly Disagree	Don't Know/NA
					5	17
4b.	n = 159	60	64	3	4	28
4c.	n = 156	63	55		3	30
3d.	n = 178				5	9
3e.	n = 189	117	58	2	3	9
5a.	n = 166	77	61	6	5	17
5b.	n = 159	60	64	3	4	28
5c.	n = 156	63	55	5	3	30
5d.	n = 168	72	70	5	3	18
5e.	n = 183	120	53	1	1	8
6a.	n = 160	65	61	7	6	21
6b.	n = 158	55	61	8	6	28
6c.	n = 164	64	63	8	4	25
6d.	n = 161	57	67	6	7	24
6e.	n = 192	120	58	4	1	9
7a.	n = 165	63	59	6	4	33
7b.	n = 164	54	56	5	4	45
7c.	n = 165	56	58	6	2	43
7d.	n = 162	53	58	4	3	44
7e.	n = 187	105	56	4	2	20
8a.	n = 171	98	55	2	2	14
8b.	n = 169	90	55	3	2	19
8c.	n = 166	90	54	1	1	20
8d.	n = 166	91	59	0	3	13
8e.	n = 172	105	53	4	1	9

Number of Rodriguez Elementary School Parent Responses, by Response Option
(Continued)

		Strongly Agree	Agree	Disagree	Strongly Disagree	Don't Know/NA
11a.	n = 179	96	59	1	1	22
11b.	n = 177	98	69	0	2	8
11c.	n = 180	102	69	1	1	7
11d.	n = 177	101	64	1	1	10
11e.	n = 167	84	65	2	1	15
11f.	n = 177	95	71	0	3	8
11g.	n = 174	91	68	3	2	10
11h.	n = 169	84	60	7	5	13
11i.	n = 156	75	50	3	1	27
12a.	n = 175	63	62	9	3	38
12b.	n = 178	72	61	7	4	34
12c.	n = 168	59	62	12	4	31
12d.	n = 175	72	64	11	0	25
12e.	n = 171	77	65	6	5	18
12f.	n = 172	71	62	10	6	23
13a.	n = 185	119	56	2	1	7
13b.	n = 175	88	61	5	5	16
13c.	n = 168	87	51	3	2	25
13d.	n = 176	86	56	6	3	25
13e.	n = 178	109	58	0	1	10
14.	n = 167	<i>Item 14 did not use the "Strongly Agree" to "Strongly Disagree" scale. Numbers below reflect the number of parents selecting each goal. These numbers will not sum to the total number of item respondents because parents may select multiple goals.</i>				
		High School diploma	Certificate/ Associates degree	Bachelors degree	Graduate/ Professional degree	Military service
		157	74	110	103	16