



## 2006-2007 AISD Parent Survey Results

### Ridgetop Elementary School

The following report contains the results of the 2006-2007 AISD Parent Survey for your campus and all AISD schools at your level. The first section of this report provides a comparison of the campus demographics and the demographics reported by parents who responded to the survey from your campus. The next section describes the percentages of

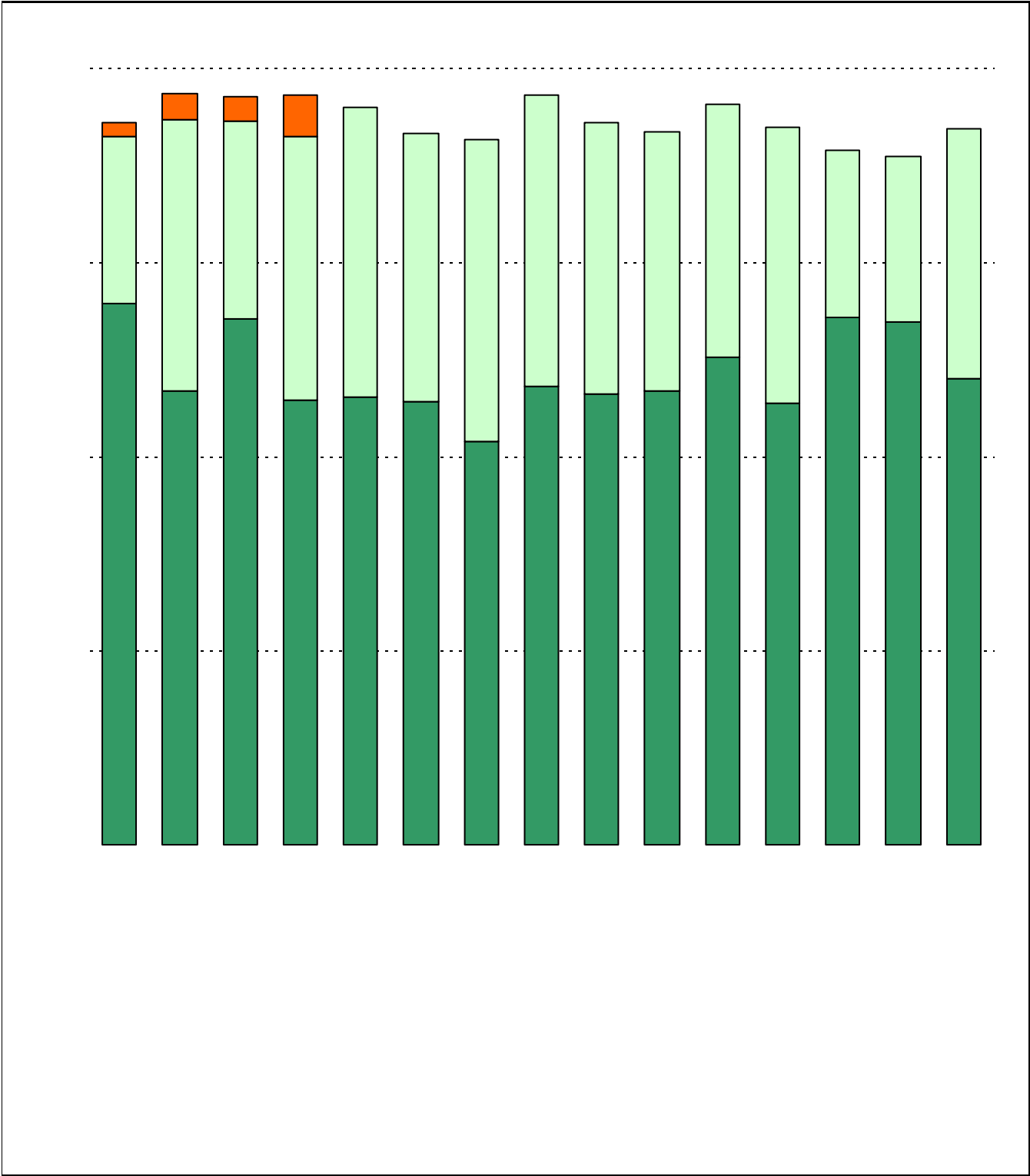
**How many parents responded to the survey in 2005-2006 and 2006-2007, and how does this compare to the number of students in the population each year?**

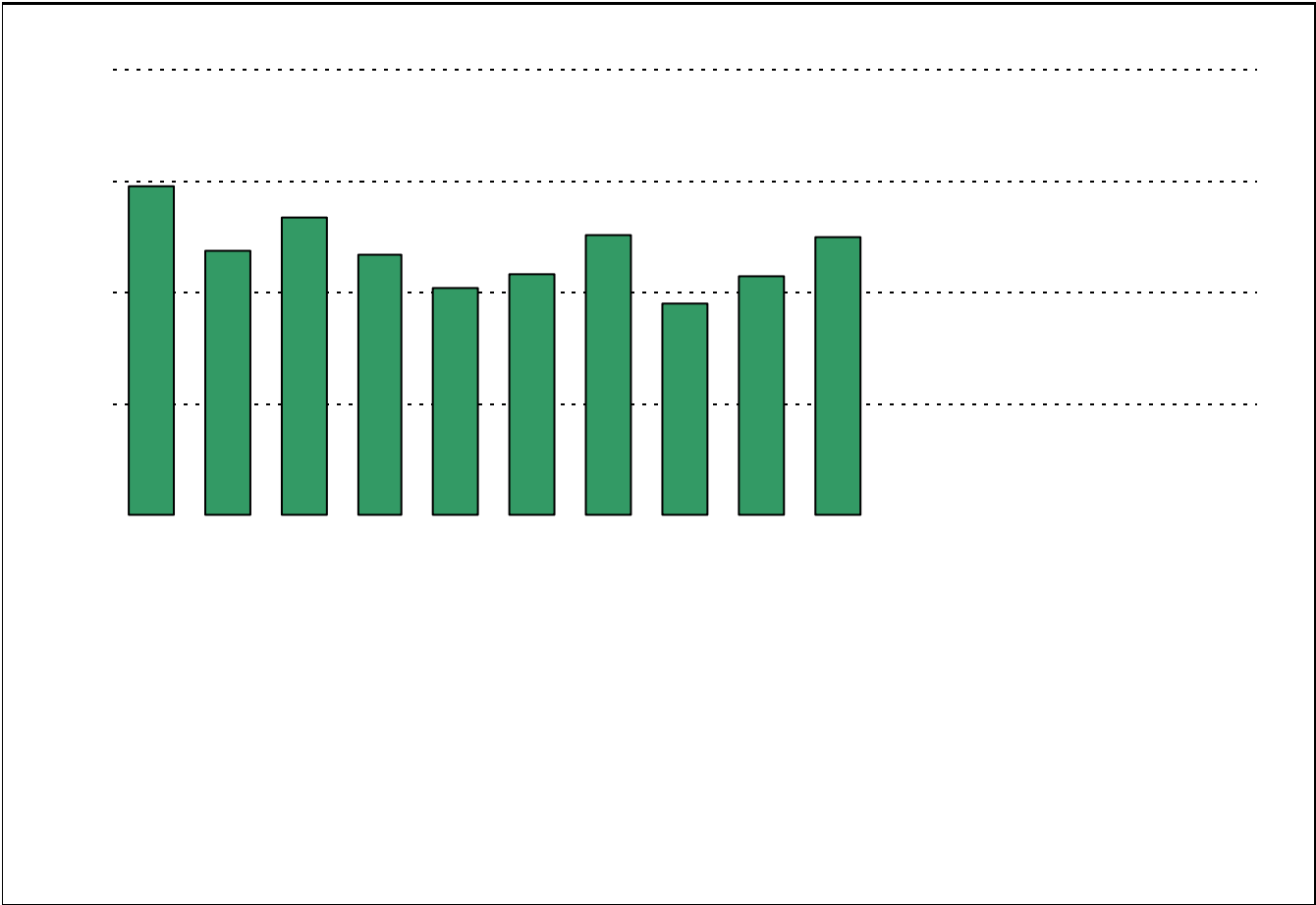
	Campus	District EL	District MS	District HS
	63			
	234			
	<b>26.9%</b>			
	65			
	198			
	<b>32.8%</b>			

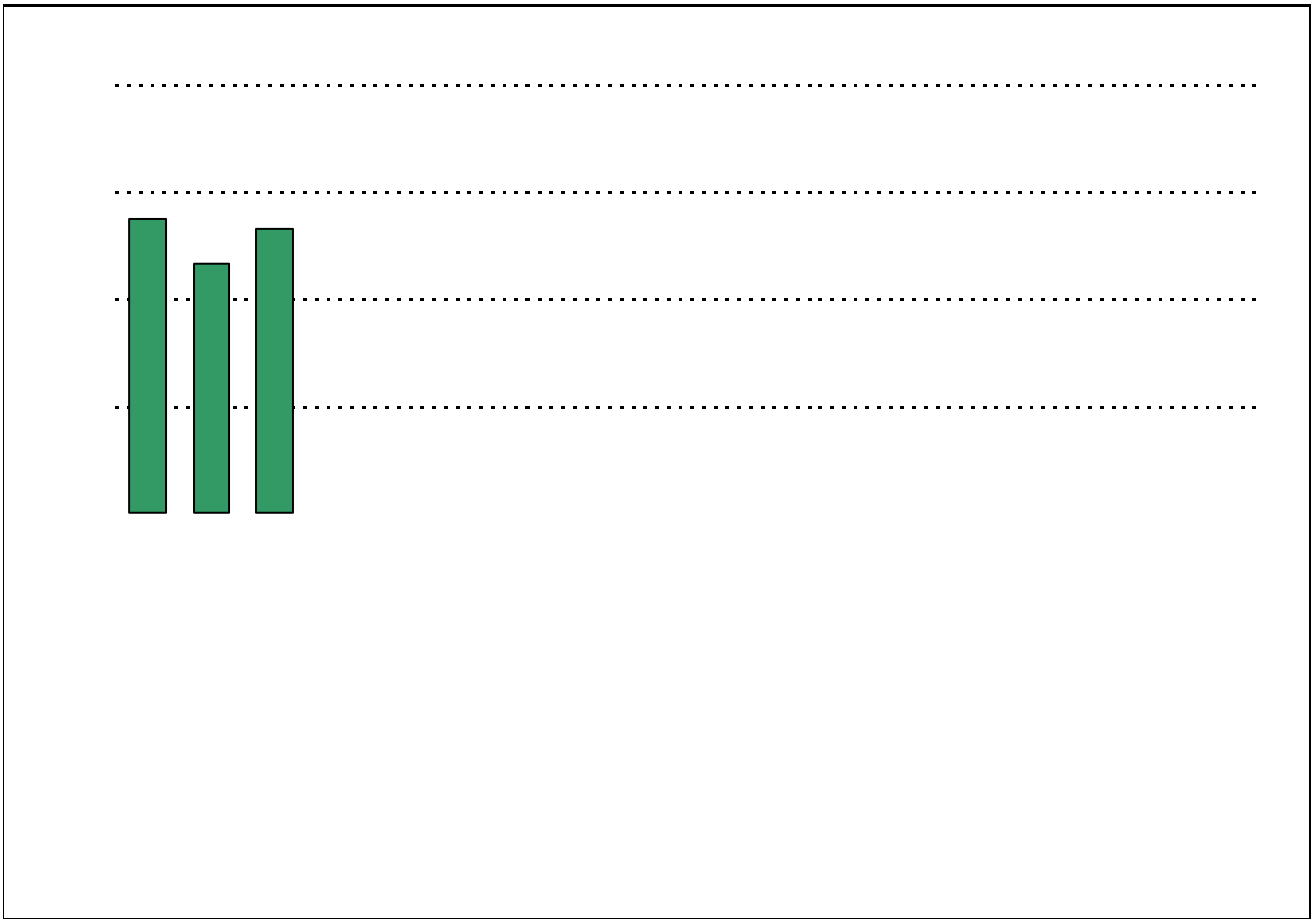
**What did parents report as their child's ethnicity, and how does this compare to the ethnic distribution of the student population?**

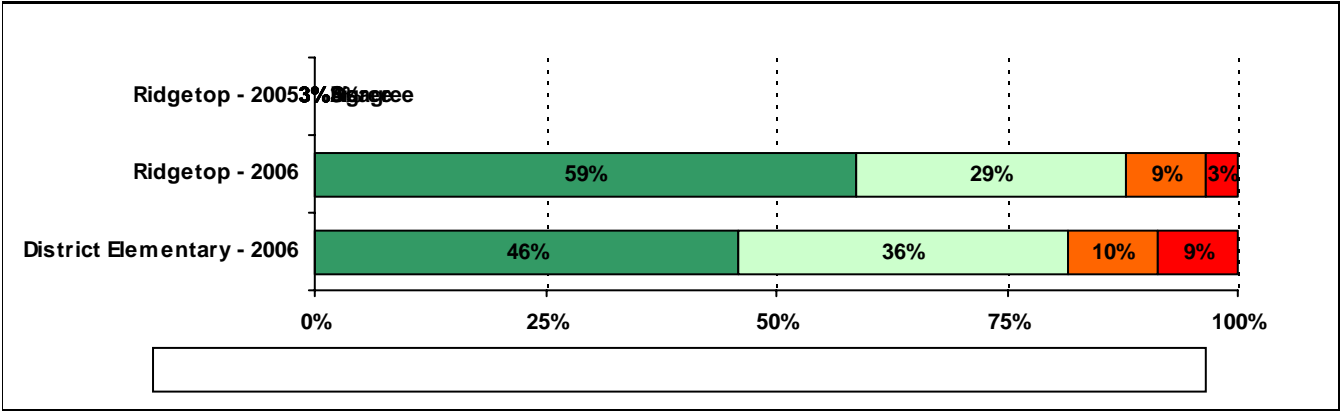
Ethnicity	% of Students, as Reported by Campus Parent Respondents	% of Students in Campus Population
	3.7%	
<b>Asian</b>	0.0%	1.0%
<b>Hispanic</b>	79.6%	78.3%
<b>Native American</b>	3.7%	0.0%
<b>White</b>	13.0%	12.6%

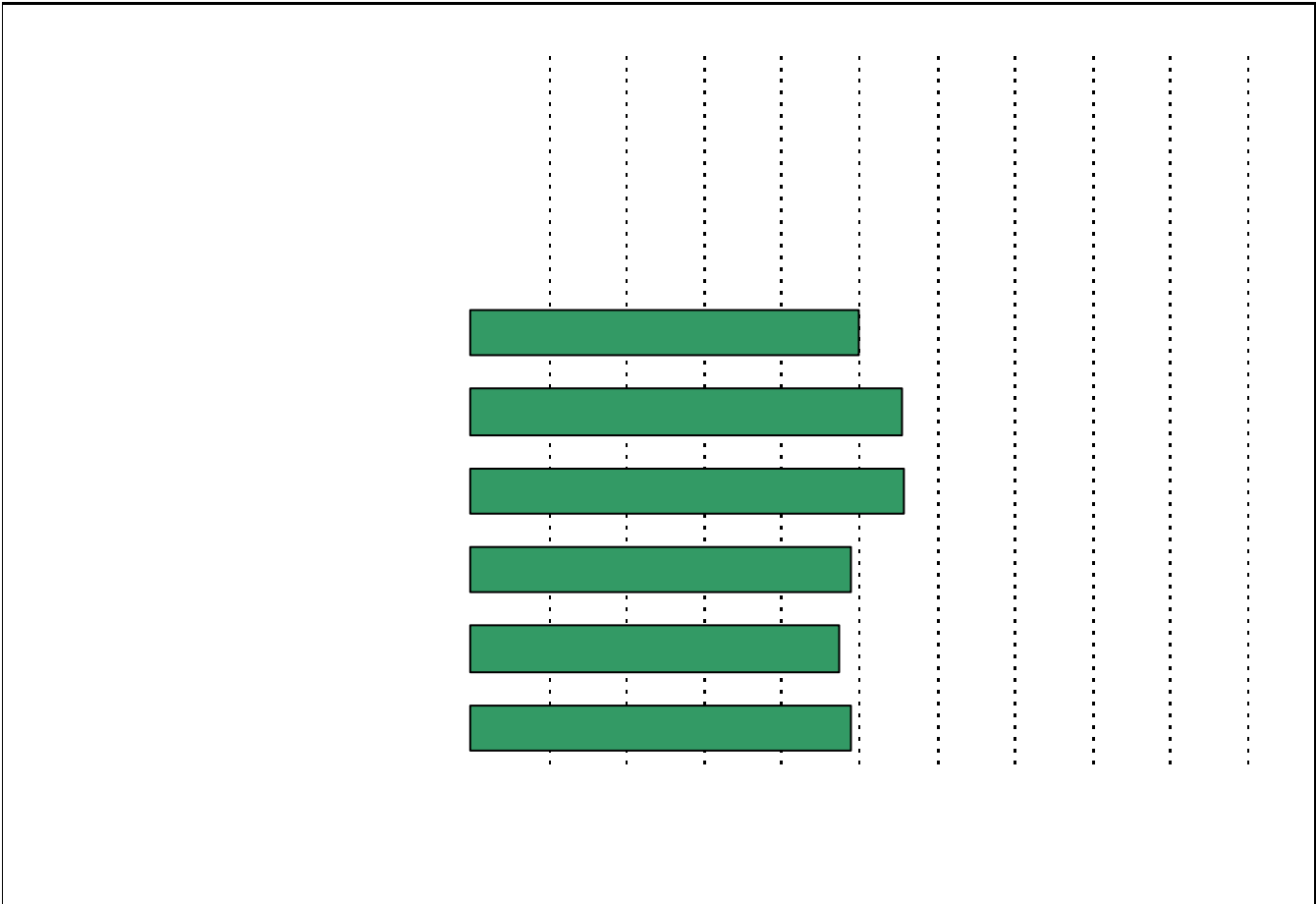
**USING THE RESULTS OF THE AISD P**











**Required  
curriculum**



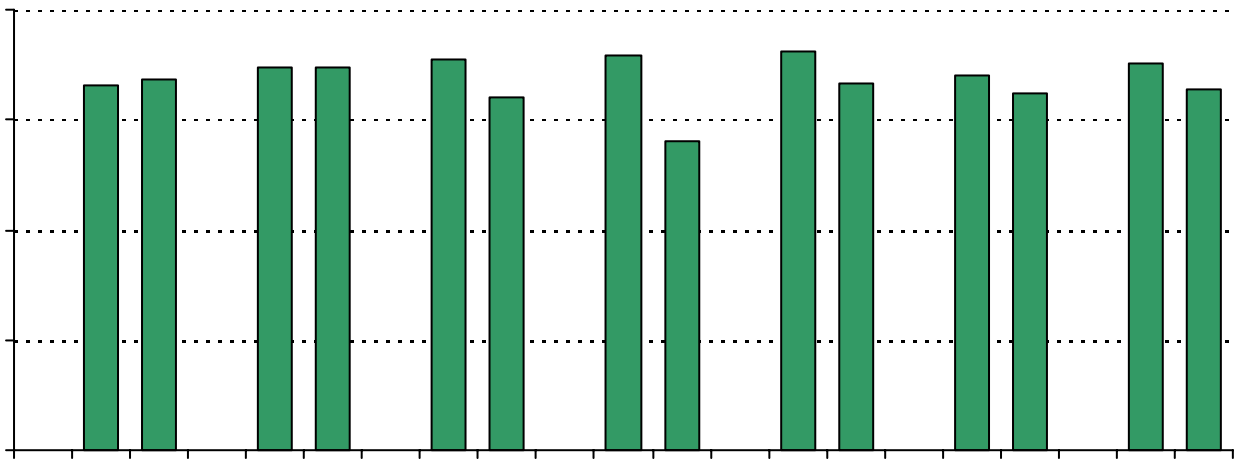
\_\_\_\_\_

\_\_\_\_\_

\_\_\_\_\_

\_\_\_\_\_

19. Which of the following ac9.8(he f0 0 cm0.2 0.604 0.396 scnCs6 CS 0 0 0 SCINJl j 0.748 w 10 M d1 i 245.93



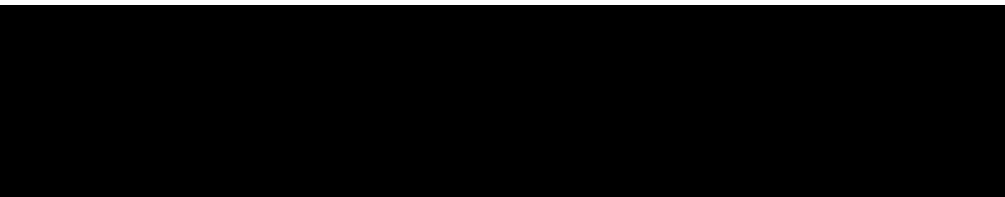
\* Item(s) #17, #18, #19 added to the survey in 2006

.....

.....

.....

.....



## Item Response Details

Number of Ridgetop Elementary School Parent Responses, by Response Option

		Strongly Agree	Agree	Disagree	Strongly Disagree	Don't Know/NA
4a.	n = 57	30	21	2	2	2
4b.	n = 52	20	16	1	1	14
4c.	n = 58	26	26	2	1	3
3d.	n = 59	29	22	4	1	0
3e.	n = 62	35	21	2	2	2
6a.	n = 57	30	21	2	2	2
6b.	n = 52	20	16	1	1	14
6c.	n = 58	26	26	2	1	3
6d.	n = 59	29	22	4	2	2
6e.	n = 60	35	20	3	1	1
7a.	n = 56	30	20	3	1	2
7b.	n = 52	16	18	3	1	14
7c.	n = 57	23	26	2	1	5
7d.	n = 53	23	23	3	1	3
7e.	n = 59	32	22	2	2	1
8a.	n = 54	30	19	2	1	2
8b.	n = 52	17	19	2	1	13
8c.	n = 54	25	21	4	1	3
8d.	n = 54	24	24	2	1	3
8e.	n = 59	32	23	2	1	1
9a.	n = 60	37	17	3	1	2
9b.	n = 54	24	16	1	1	12
9c.	n = 57	28	22	2	1	4
9d.	n = 57	33	18	3	1	2
9e.	n = 62	35	19	4	2	2

<b>13a.</b>	<b>n = 62</b>	35	23	1	2	1
<b>13b.</b>	<b>n = 61</b>					
<b>13c.</b>	<b>n = 59</b>					
<b>14a.</b>	<b>n = 59</b>	28	20	7	0	4
<b>14b.</b>	<b>n = 63</b>					
<b>14c.</b>	<b>n = 62</b>					
		32	24	4	2	1