



2005-2006 AISD Parent Survey Results

The following report contains the results of the 2005-2006 AISD Parent Survey for your campus and all AISD schools at your level. The first section of this report provides a comparison of the campus demographics and the demographics reported by parents who responded to the survey from your campus. The next section describes the percentages of parents selecting specific responses for each survey item, and the final section indicates the actual number of parents who selected each response option. Campus survey results should be examined for areas of strength and opportunities for improvement. Results for all AISD schools at your level and results for your campus from 2004-2005 are presented to provide a reference for comparison.

How many parents responded to the survey in 2004-2005 and 2005-2006, and how does this compare to the number of students in the population each year?

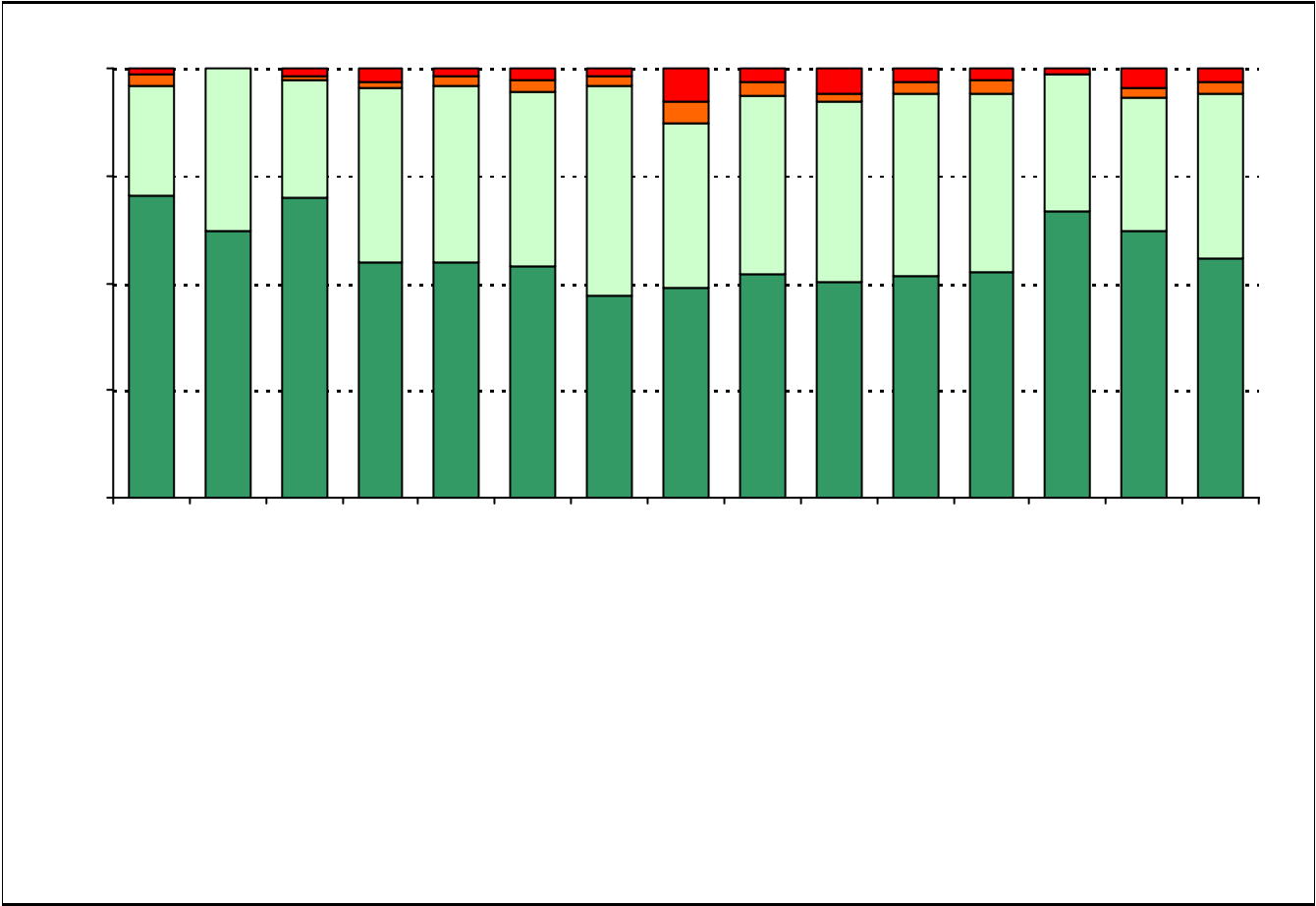
	Campus	District EL	District MS	District HS
# of Parents Responding in 2004-2005	83	12,137	2,007	2,700
# of Students in 2004-2005	243	43,566	15,705	19,976
# of Parents Responding in 2005-2006	61	10,900	1,801	2,085
# of Students in 2005-2006	266	44,827	15,624	20,081

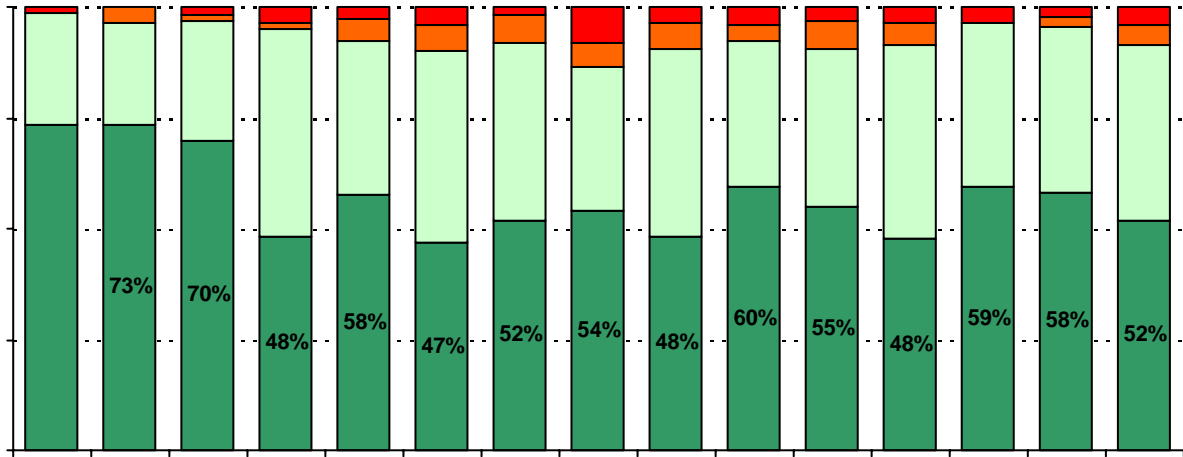
What did parents report as their child's ethnicity, and how does this compare to the ethnic distribution of the student population?

African American	4.3%	6.8%
Asian	0.0%	1.1%
Hispanic	76.6%	76.3%
Native American	0.0%	0.0%
White	19.1%	15.8%

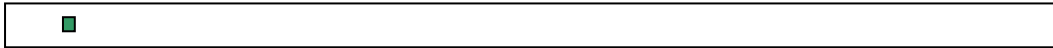
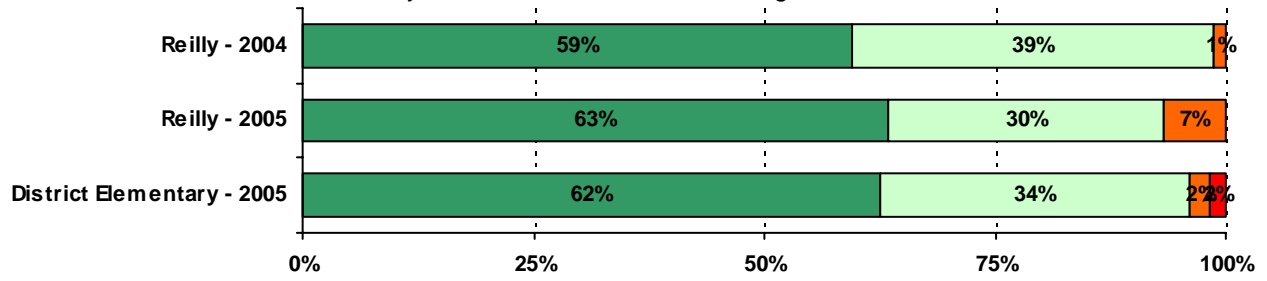
Grade	% of Students, as Reported by Campus Parent Respondents	% of Students in Campus Population
EC		
PK		

USING THE RESULTS OF THE AISD PARENT SURVEY





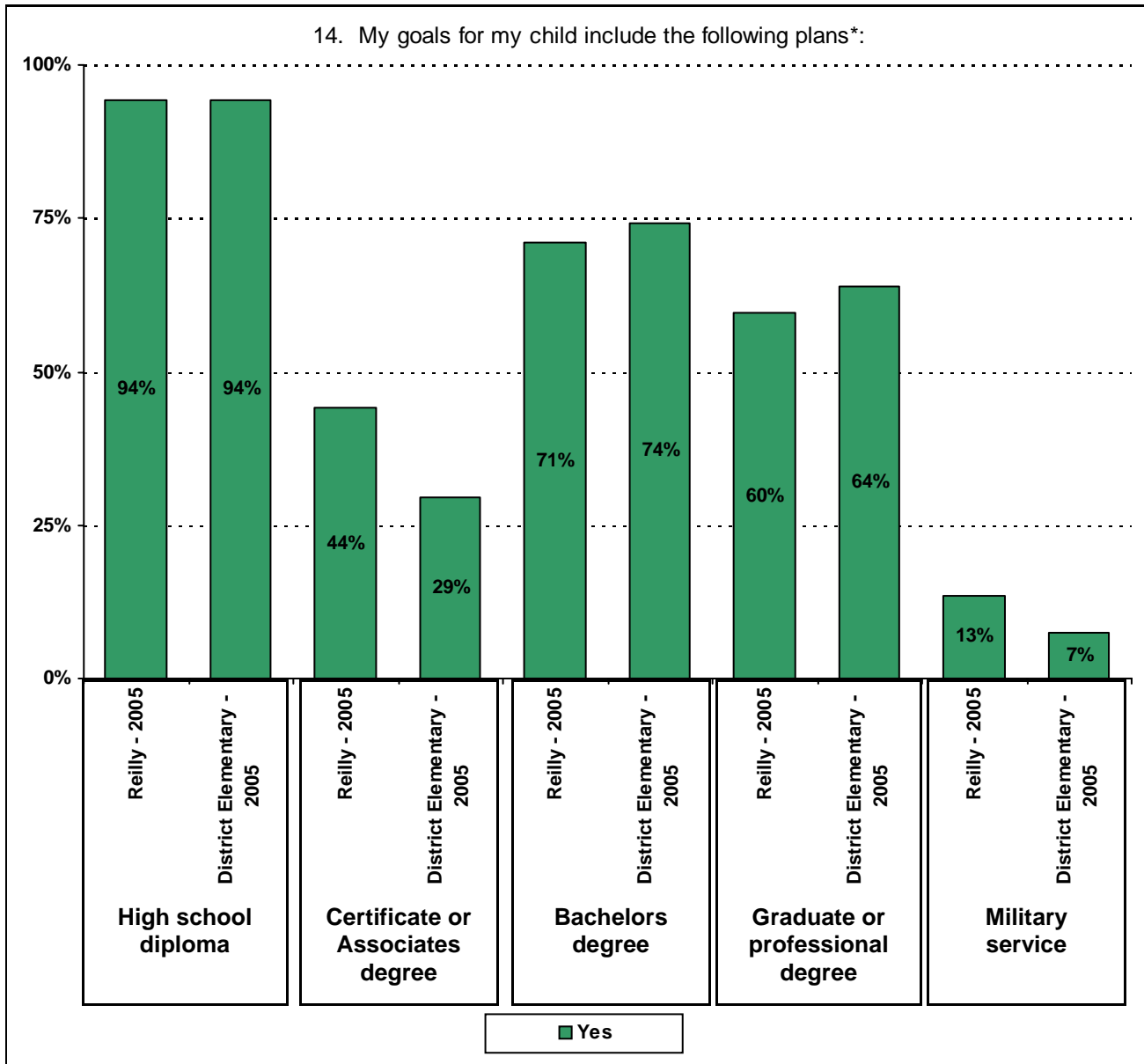
9. My child's school is a safe learning environment.



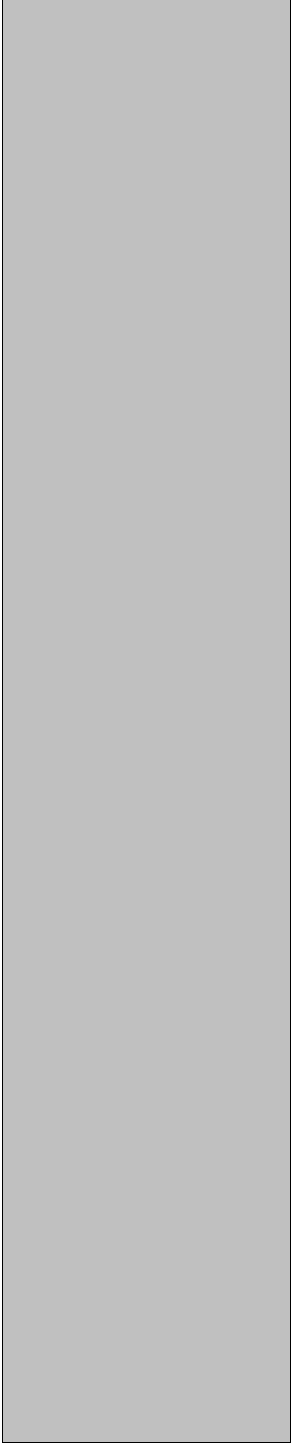
.....



Required



* Item 14 was added to the survey in 2005. Respondents who selected Certificate, Associates, Bachelors, or Graduate degree were included in the "Yes" percentage for High School diploma, even if they did not select the High School diploma option. Respondents who selected Graduate degree were included in the "Yes" percentage for Bachelors degree, even if they did not select the Bachelors degree option.



Number of Reilly Elementary School Parent Responses, by Response Option
(Continued)

		Strongly Agree	Agree	Disagree	Strongly Disagree	Don't Know/NA
11a.	n = 54	32	17	2	1	2
11b.	n = 53	34	16	2	1	0
11c.	n = 53	32	18	2	1	0
11d.	n = 54	33	20	0	1	0
11e.	n = 51	29	19	1	1	1
11f.	n = 54	33	20	0	1	0
11g.	n = 55	32	21	1	1	0
11h.	n = 53	30	13	7	1	2
11i.	n = 46	23	13	2	1	7
12a.	n = 53	25	12	3	3	10
12b.	n = 56	30	12	2	2	10
12c.	n = 54	27	16	5	2	4
12d.	n = 53	24	18	2	3	7
12e.	n = 52	28	22	1	1	0
12f.	n = 53	27	21	2	2	1
13a.	n = 57	39	18	0	0	0
13b.	n = 52	30	13	4	2	3
13c.	n = 49	28	10	4	0	7
13d.	n = 52	28	11	3	2	8
13e.	n = 56	36	18	1	0	1
14.	n = 52					
		High School diploma	Certificate/ Associates degree	Bachelors degree	Graduate/ Professional degree	Military service
		49	23	37	31	7