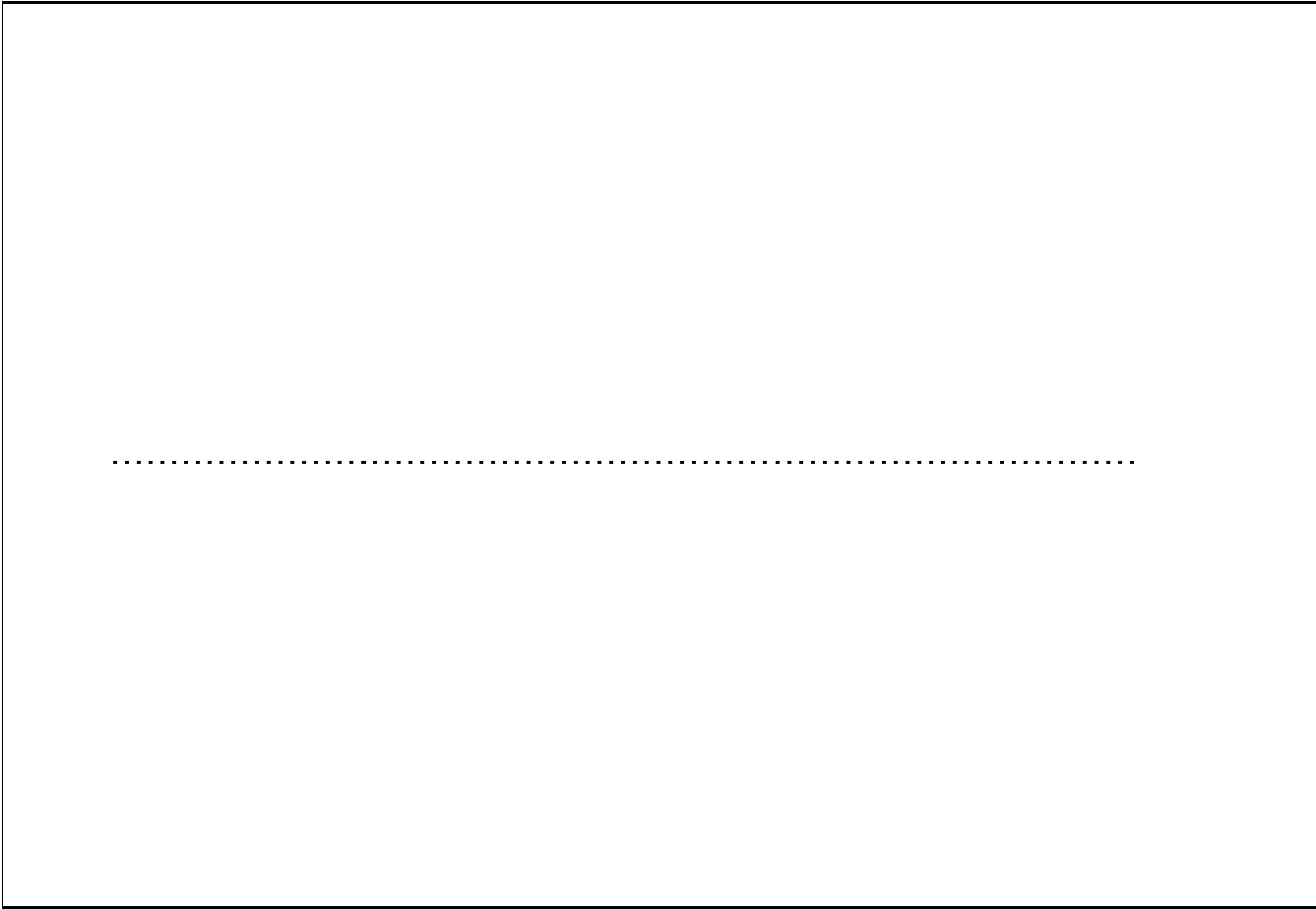
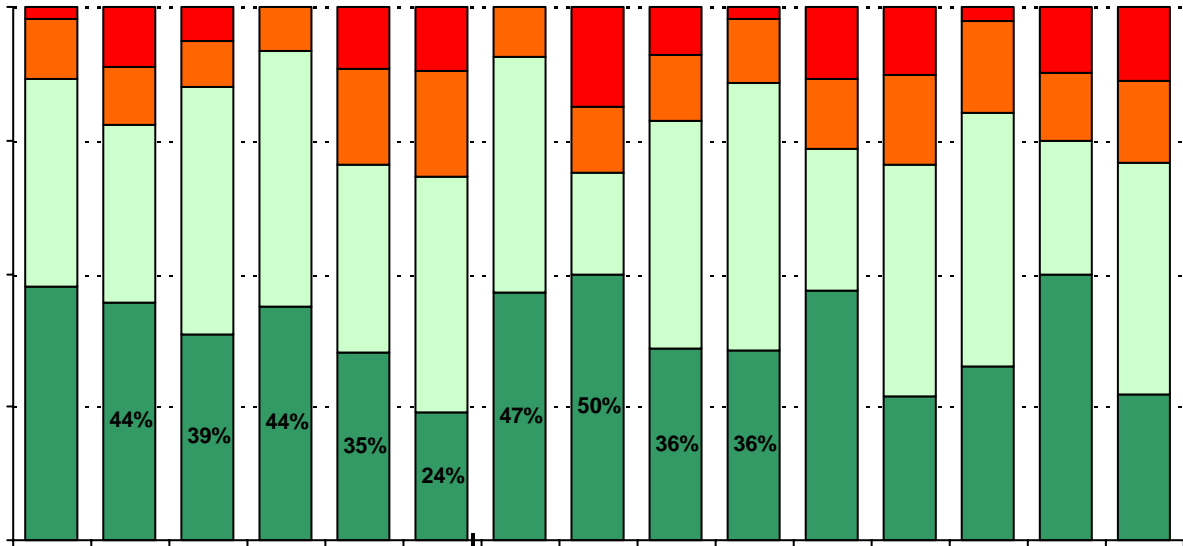


**How many parents responded to the survey in 2004-2005 and 2005-2006, and how does this compare to the number of students in the population each year?**



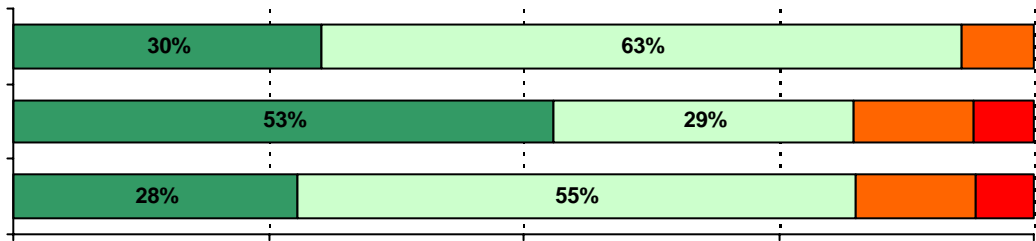






A vertical line extending downwards from the bottom of the 5th bar.

A short vertical line on the left side of the page.





.....  
|

**Required**

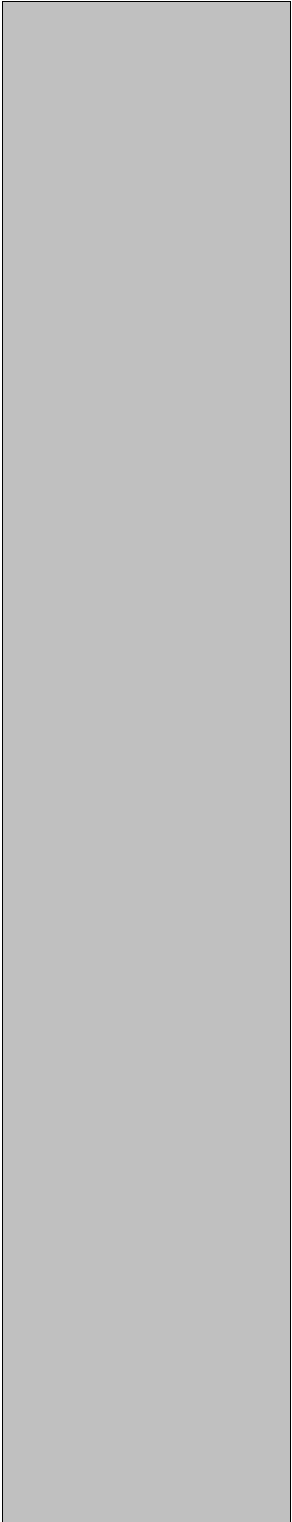






**Item Response Details**

		<b>Strongly Agree</b>	<b>Agree</b>	<b>Disagree</b>	<b>Strongly Disagree</b>	<b>Don't Know/NA</b>
<b>3a.</b>	<b>n = 21</b>	8	8	2	1	2
<b>3b.</b>	<b>n = 21</b>	8	7	2	1	3
<b>3c.</b>	<b>n = 20</b>	10	5	1	2	2
<b>3d.</b>	<b>n = 21</b>	8	8	1	2	2
<b>3e.</b>	<b>n = 21</b>	7	10	0	2	2



8

6

1

3

2