



2006-2007 AISD Parent Survey Results

The following report contains the results of the 2006-2007 AISD Parent Survey for your campus and all AISD schools at your level. The first section of this report provides a comparison of the campus demographics and the demographics reported by parents who responded to the survey from your campus. The next section describes the percentages of parents selecting specific responses for each survey item, and the final section indicates the actual number of parents who selected each response option. Campus survey results should be examined for areas of strength and opportunities for improvement. Results for all AISD schools at your level and results for your campus from 2005-2006 are presented to provide references for comparison. Please note that due to differences in response rates by campus, ranging from 1.67% to 19.79%, district level results are more influenced by some campuses than others.

Note: Campus data in this report should be interpreted with caution due to the low response rate.

How many parents responded to the survey in 2005-2006 and 2006-2007, and how does this compare to the number of students in the population each year?

	Campus	District EL	District MS	District HS
# of Parents Responding in 2005-2006	39	12,137	2,007	2,700
# of Students in 2005-2006	609	44,827	15,624	20,081
<i>Ratio of Parent Respondents to Students, 2005-2006</i>	6.4%	24.3%	11.5%	10.4%
# of Parents Responding in 2006-2007	6	11,812	1,354	1,426
# of Students in 2006-2007	359	45,431	15,790	20,279
<i>Ratio of Parent Respondents to Students, 2006-2007</i>	1.7%	26%	8.6%	7%

What did parents report as their child's ethnicity, and how does this compare to the ethnic distribution of the student population?

African American	7.2%
Asian	0.8%
Hispanic	77.4%

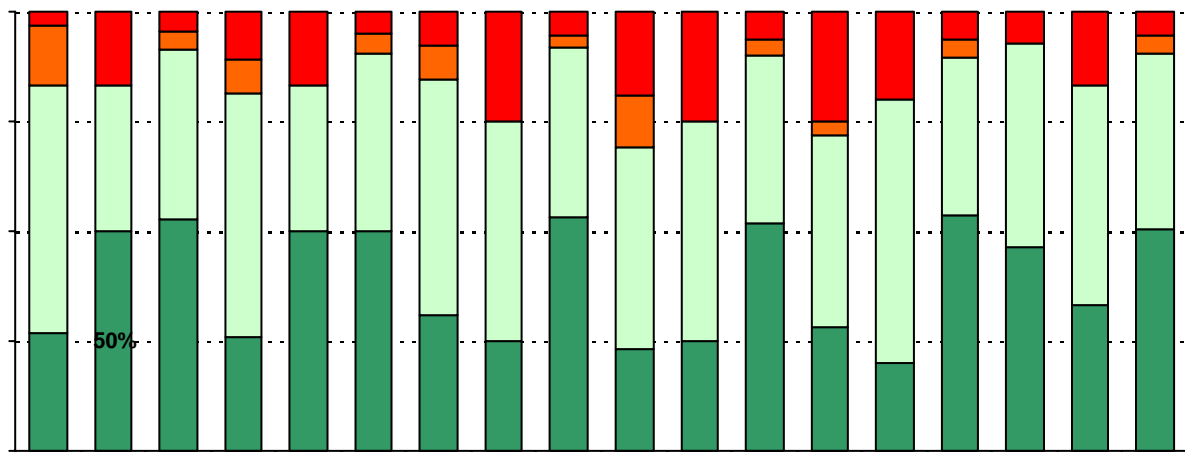
What did parents report as their child's grade, and how does this compare to the grade level distribution of the student population?

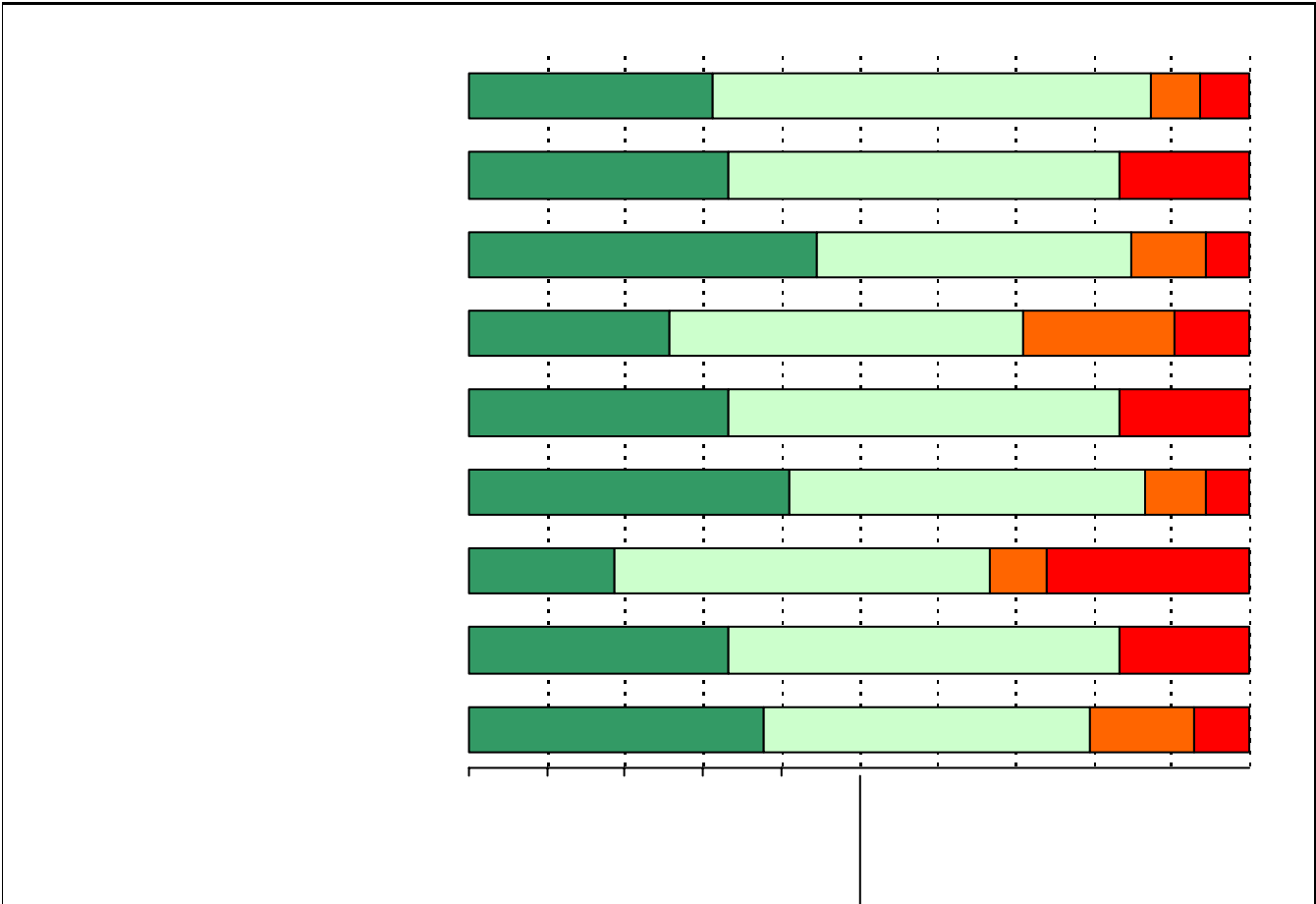
Grade	% of Students, as Reported by Campus Parent Respondents	% of Students in Campus Population
6th	N/A	N/A
7th	83.3%	47.1%
8th	16.7%	52.9%
9th	N/A	N/A
10th	N/A	N/A
11th	N/A	N/A
12th	N/A	N/A

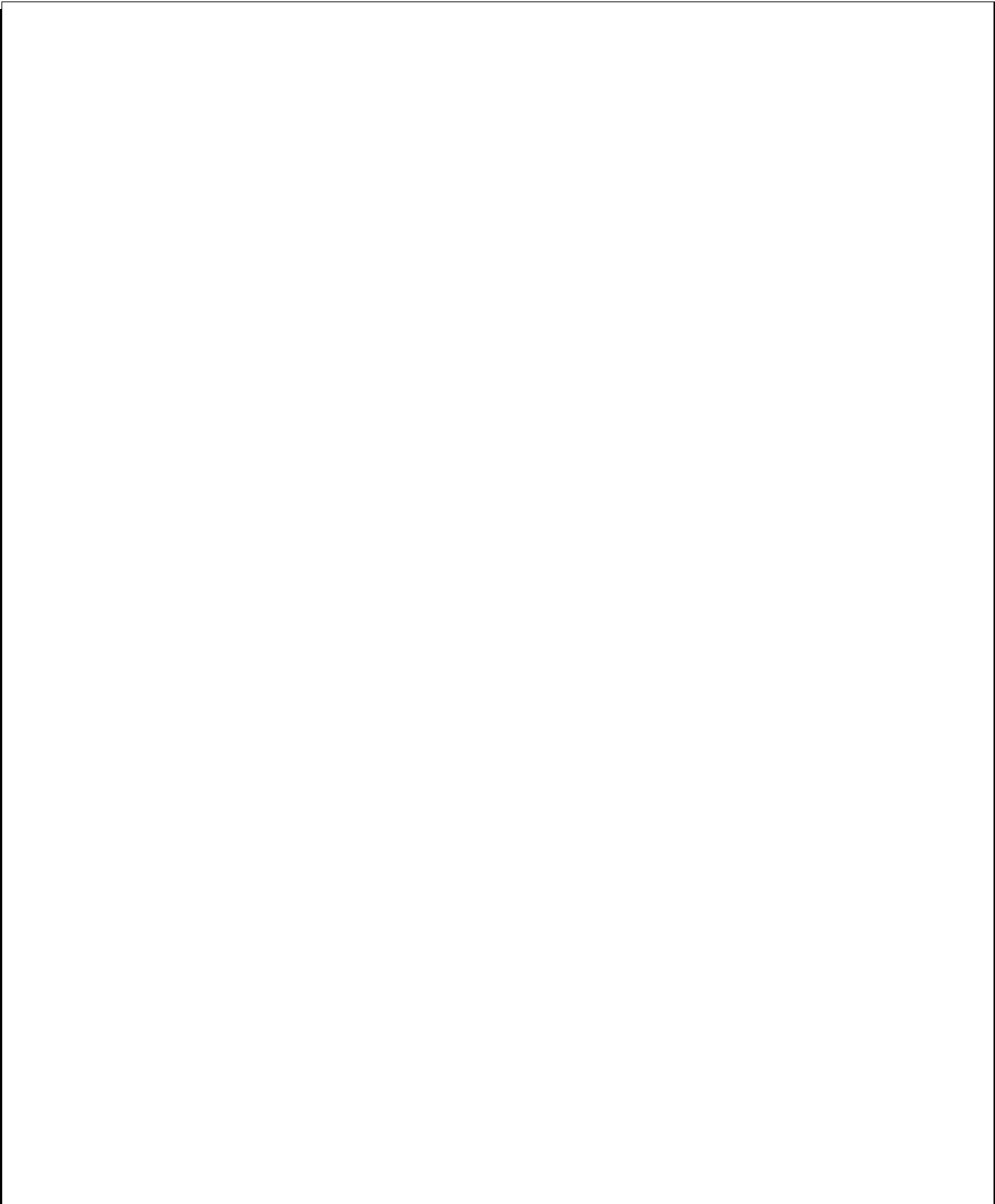
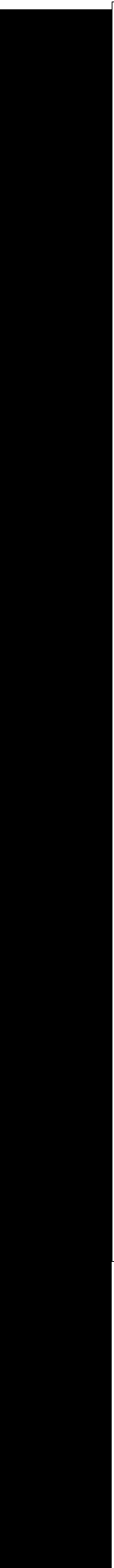
Note: Student population data are based on Fall PEIMS data submitted by the district to TEA, and may differ from the official AEIS report.

USING THE RESULTS OF THE AISD PARENT SURVEY

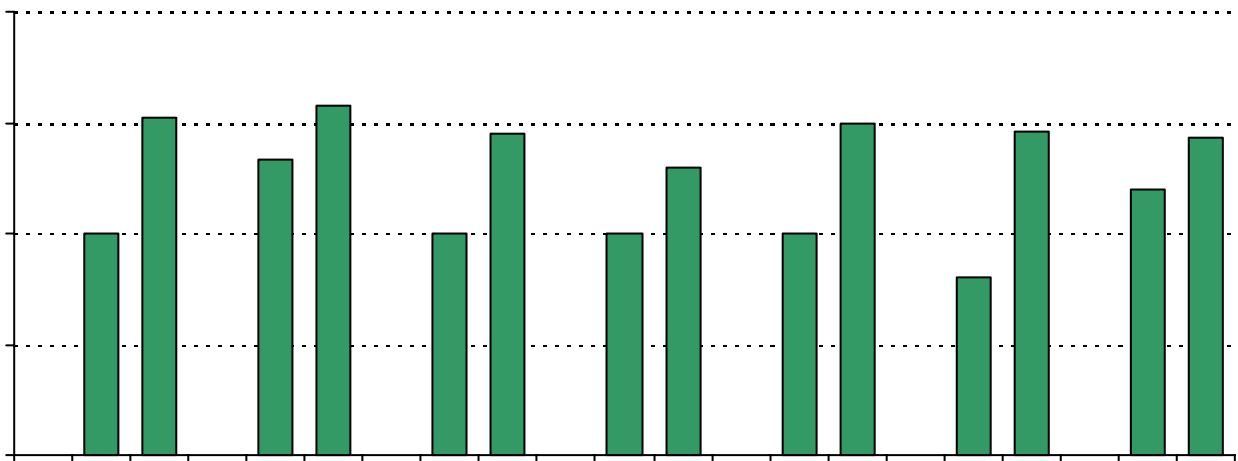
Each survey item is presented below, followed by a bar graph containing your school's results for two years and this year's results for all campuses at your level. You will be able to identify areas in which your school's results have changed. (Each school's results are compared to the district average.)



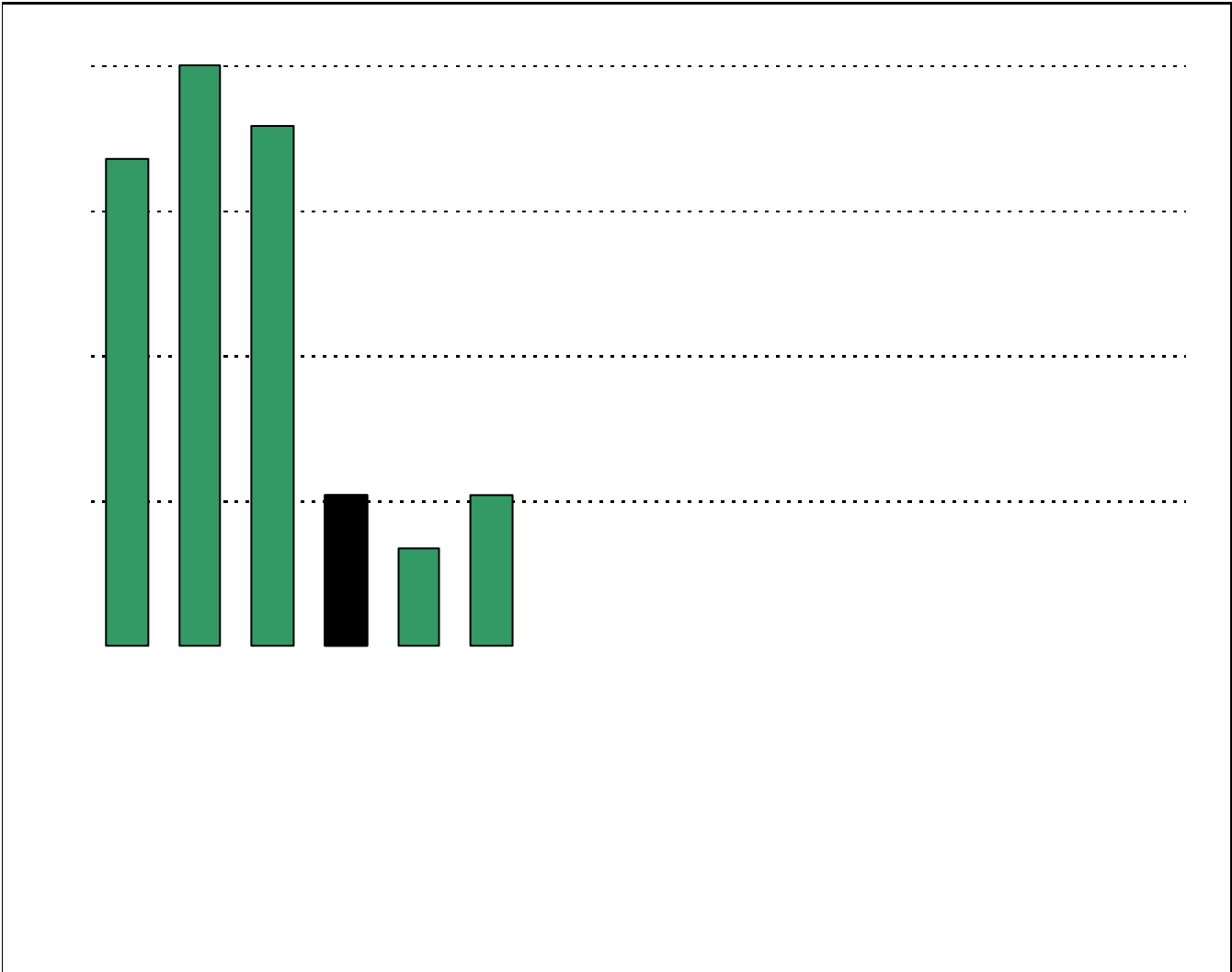




19. Which of the following is the most common? (h) 44.1% (e) 36.9% (h) 41.8% (e) 41.8% (g) 45.9% (h) 26.5% (e) 45.3% (g) 15.6% (g) 7.0%



* Item(s) #17, #18, #19 added to the survey in 2006



Item Response Details

Number of Porter Middle School Parent Responses, by Response Option

		Strongly Agree	Agree	Disagree	Strongly Disagree	Don't Know/NA
4.	n = 6		0	6		
5a.	n = 6	0	5	0	1	0
5b.	n = 6	0	4	0	1	1
5c.	n = 6	0	4	0	1	1
5d.	n = 6	1	5	0	0	0
5e.	n = 6	2	3	0	1	0
6a.	n = 6	1	3	0	1	1
6b.	n = 6	1	2	0	1	2
6c.	n = 6	1	3	0	1	1
6d.	n = 6	2	3	0	0	1
6e.	n = 6	2	3	0	1	0
7a.	n = 6	1	3	0	1	1
7b.	n = 6	1	2	0	1	2
7c.	n = 6	1	3	0	1	1
7d.	n = 6	0	4	0	0	2
7e.	n = 6	2	3	0	1	0
8a.	n = 6	1	3	0	1	1
8b.	n = 5	1	1	0	1	2
8c.	n = 6	2	2	0	1	1
8d.	n = 6	1	3	0	0	2
8e.	n = 6	3	2	0	1	0
9a.	n = 6	1	3	0	1	1
9b.	n = 6	1	2	0	1	2
9c.	n = 6	1	2	0	1	2
9d.	n = 6	3	2	0	1	0
9e.	n = 6	3	2	0	1	0
9f.	n = 6	2	3	0	1	0
10.	n = 6	2	2	1	1	0
11.	n = 6	3	2	0	1	0
12.	n = 6	3	1	1	1	0

Number of Porter Middle School Parent Responses, by Response Option
(Continued)

		Strongly Agree	Agree	Disagree	Strongly Disagree	Don't Know/NA
13a.	n = 6	2	3	0	1	0
13b.	n = 6	2	3	0	1	0
13c.	n = 6	2	2	1	1	0
14a.	n = 6	2	3	0	1	0
14b.	n = 6	2	3	0	1	0
14c.	n = 6	2	3	0	1	0
15a.	n = 6	2	3	0	1	0
15b.	n = 6	1	1	2	1	1
15c.	n = 6	0	4	0	1	1
15d.	n = 6	1	4	0	0	1
15e.	n = 6	1	4	0	1	0
20.	n = 6	<p><i>Item 20 did not use the "Strongly Agree" to "Strongly Disagree" scale. Numbers below reflect the number of parents selecting each goal. These numbers will not sum to the total number of</i></p>				