



How many parents responded to the survey in 2004-2005 and 2005-2006, and how does this compare to the number of students in the population each year?

	Campus	District EL	District MS	District HS
# of Parents Responding in 2004-2005				
# of Students in 2004-2005				
<i>Ratio of Parent Respondents to Students, 2004-2005</i>	<i>12.1%</i>	<i>27.8%</i>	<i>12.8%</i>	<i>13.5%</i>
# of Parents Responding in 2005-2006				
# of Students in 2005-2006				
<i>Ratio of Parent Respondents to Students, 2005-2006</i>	<i>6.4%</i>	<i>24.3%</i>	<i>11.5%</i>	<i>10.4%</i>

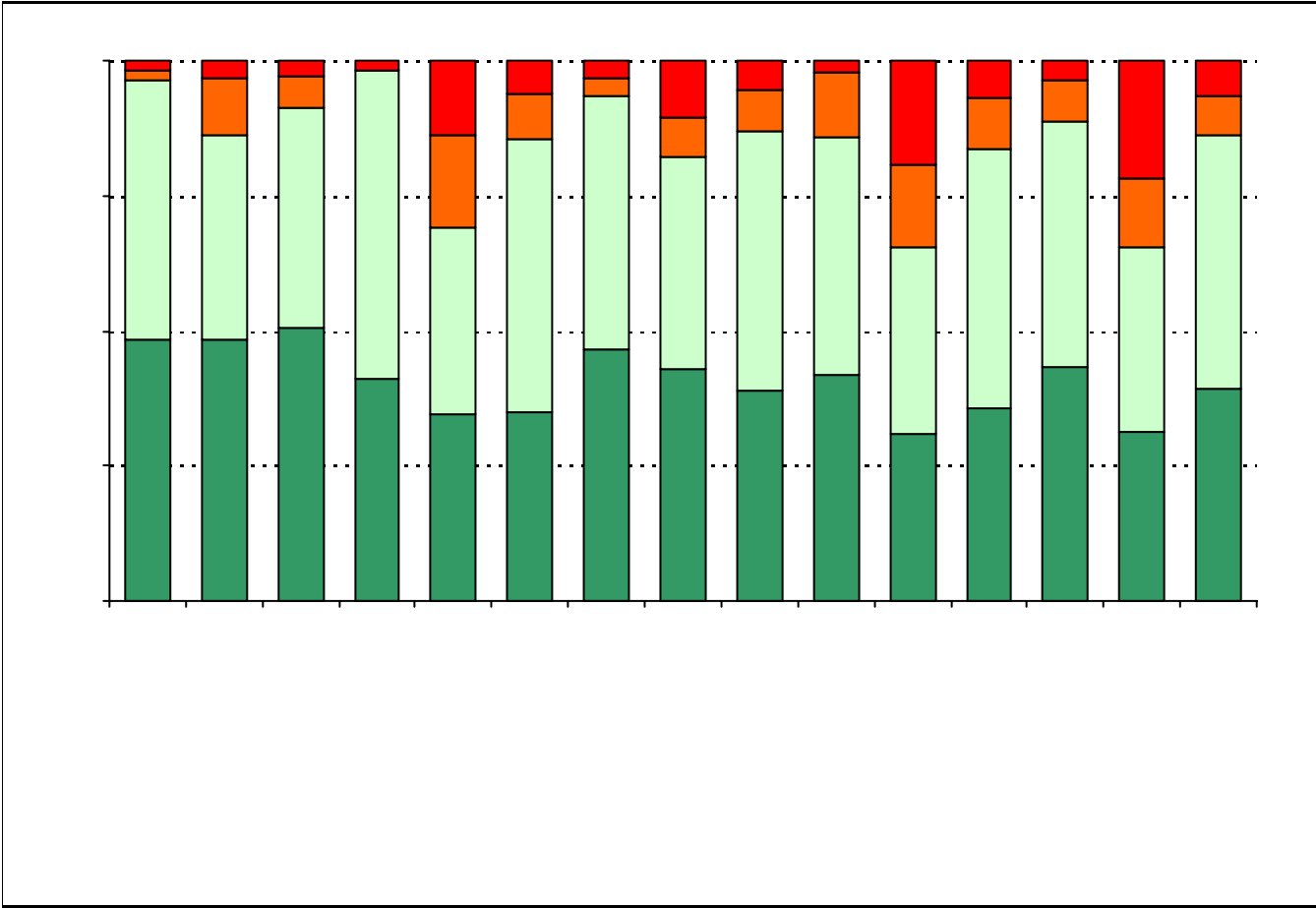
What did parents report as their child's ethnicity, and how does this compare to the ethnic distribution of the student population?

Ethnicity	% of Students, as Reported by Campus Parent Respondents	% of Students in Campus Population
African American		
Asian		
Hispanic		
Native American		
White		

What did parents report as their child's grade, and how does this compare to the grade level distribution of the student population?

Grade	% of Students, as Reported by Campus Parent Respondents	% of Students in Campus Population
6th		
7th		
8th		
9th		
10th		
11th		
12th		

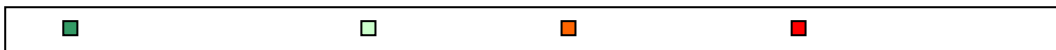
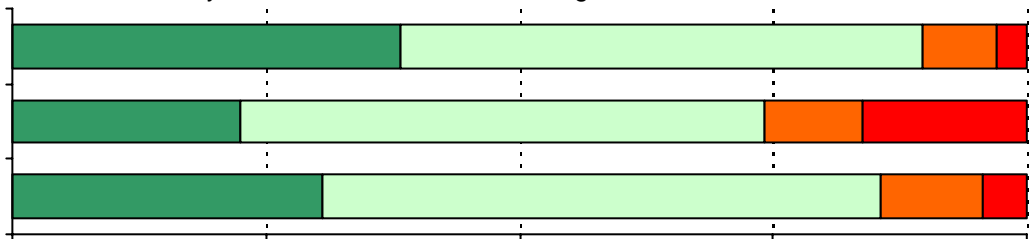
USING THE RESULTS OF THE AISD PARENT SURVEY



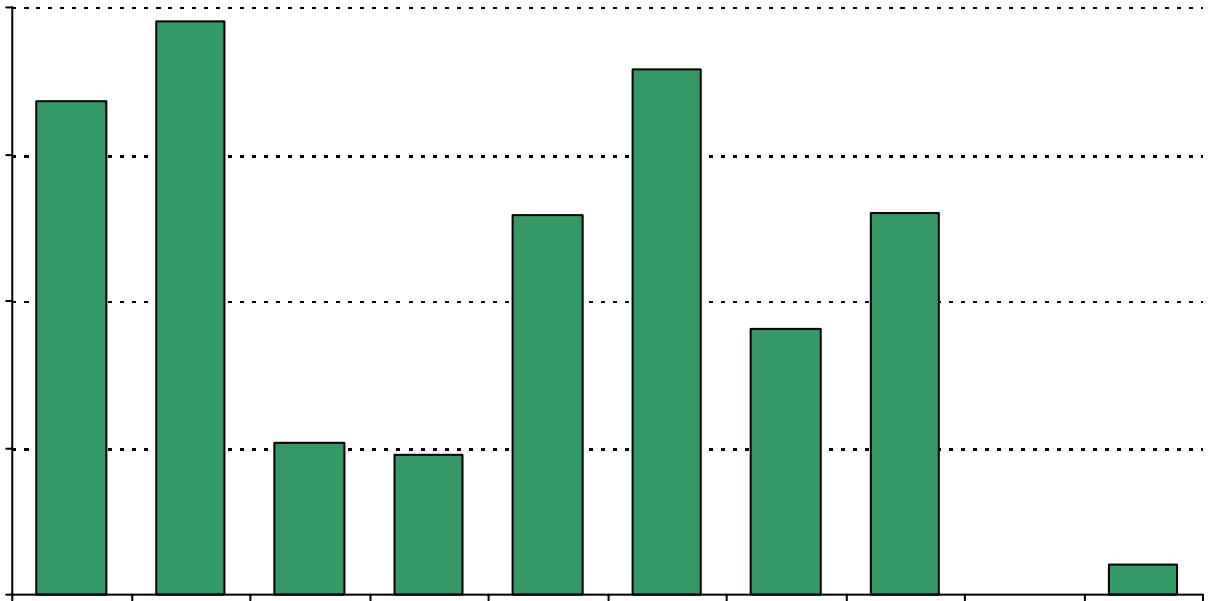


.....

9. My child's school is a safe learning environment.



15. My goals for my child include the following plans*:



Item Response Details

		Strongly Agree	Agree	Disagree	Strongly Disagree	Don't Know/NA
3a.	n = 34					
3b.	n = 33					
3c.	n = 33					
3d.	n = 33					
3e.	n = 33					
5a.	n = 35					
5b.	n = 34					
5c.	n = 33					
5d.	n = 33					
5e.	n = 32					
6a.	n = 36					
6b.	n = 32					
6c.	n = 32					
6d.	n = 32					
6e.	n = 32					
7a.	n = 33					
7c.	n = 32					
7d.	n = 30					
7e.	n = 31					
8a.	n = 34					

11a.	n = 35
11b.	n = 33
11c.	n = 33
11d.	n = 33
11e.	n = 35
11f.	n = 32
11i.	n = 34
12a.	n = 33
12b.	n = 32
12c.	n = 32
12d.	n = 33