



2005-2006 AISD Parent Survey Results

Pleasant Hill Elementary School

The following report contains the results of the 2005-2006 AISD Parent Survey for your campus and all AISD schools at your level. The first section of this report provides a comparison of the campus demographics and the demographics reported by parents who responded to the survey from your campus. The next section describes the percentages of parents selecting specific responses for each survey item, and the final section indicates the actual number of parents who selected each response option. Campus survey results should be examined for areas of strength and opportunities for improvement. Results for all AISD schools at your level and results for your campus from 2004-2005 are presented to provide a reference for comparison.

How many parents responded to the survey in 2004-2005 and 2005-2006, and how does this compare to the number of students in the population each year?

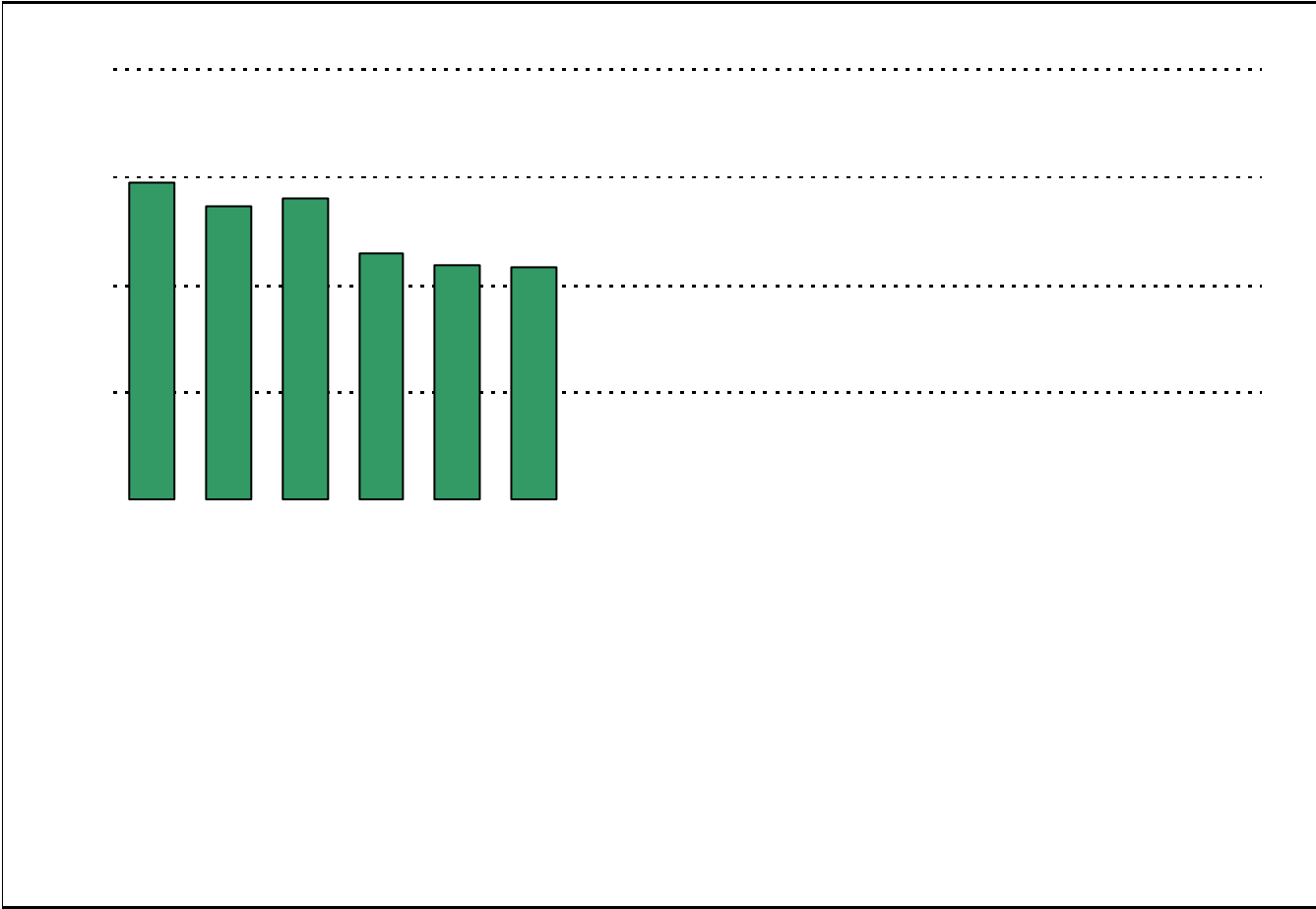
	Campus	District EL	District MS	District HS
# of Parents Responding in 2004-2005	165	12,137	2,007	2,700
# of Students in 2004-2005	603	43,566	15,705	19,976
<i>Ratio of Parent Respondents to Students, 2004-2005</i>	27.4%	27.8%	12.8%	13.5%
# of Parents Responding in 2005-2006	135	10,900	1,801	2,085
# of Students in 2005-2006	658	44,827	15,624	20,081
<i>Ratio of Parent Respondents to Students, 2005-2006</i>	20.5%	24.3%	11.5%	10.4%

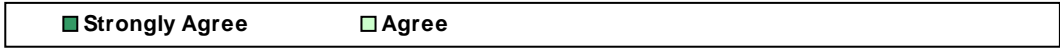
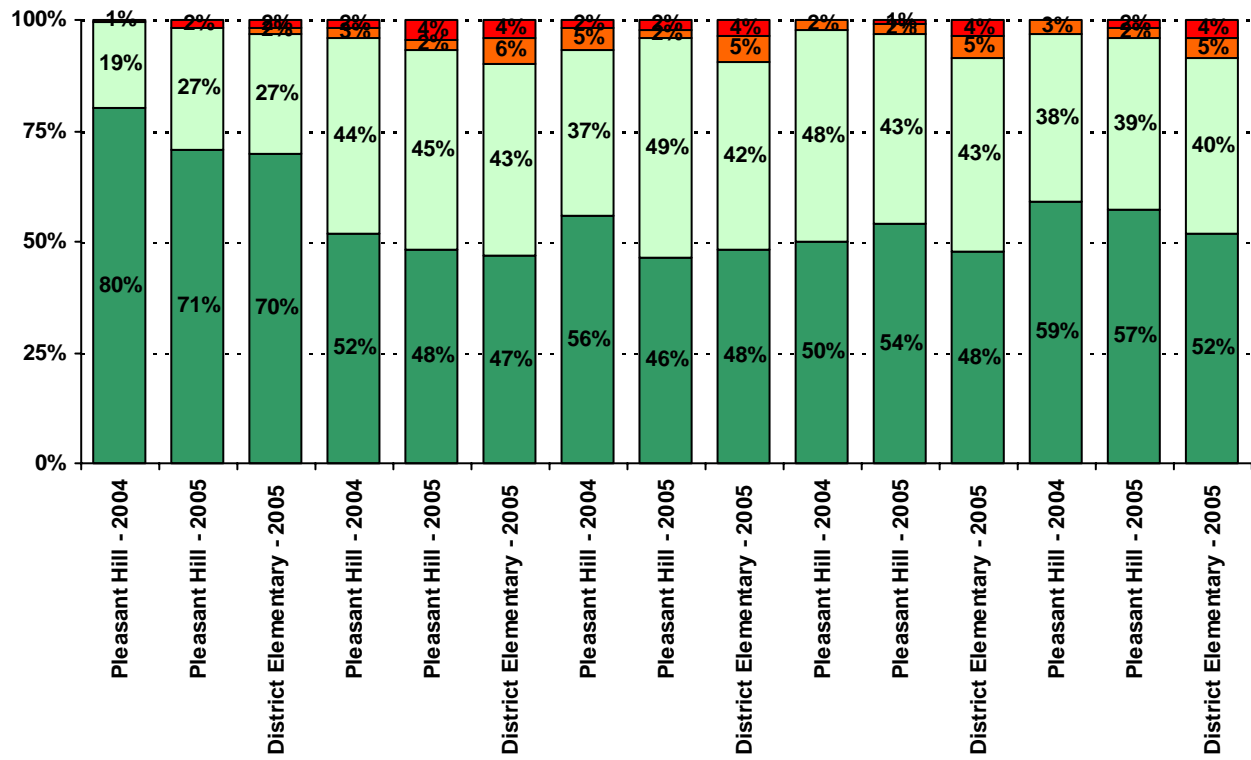
Note: The ratio of parent respondents to students is listed above as a percentage for ease of interpretation; however, it is the number of parents who responded per 100 students enrolled.

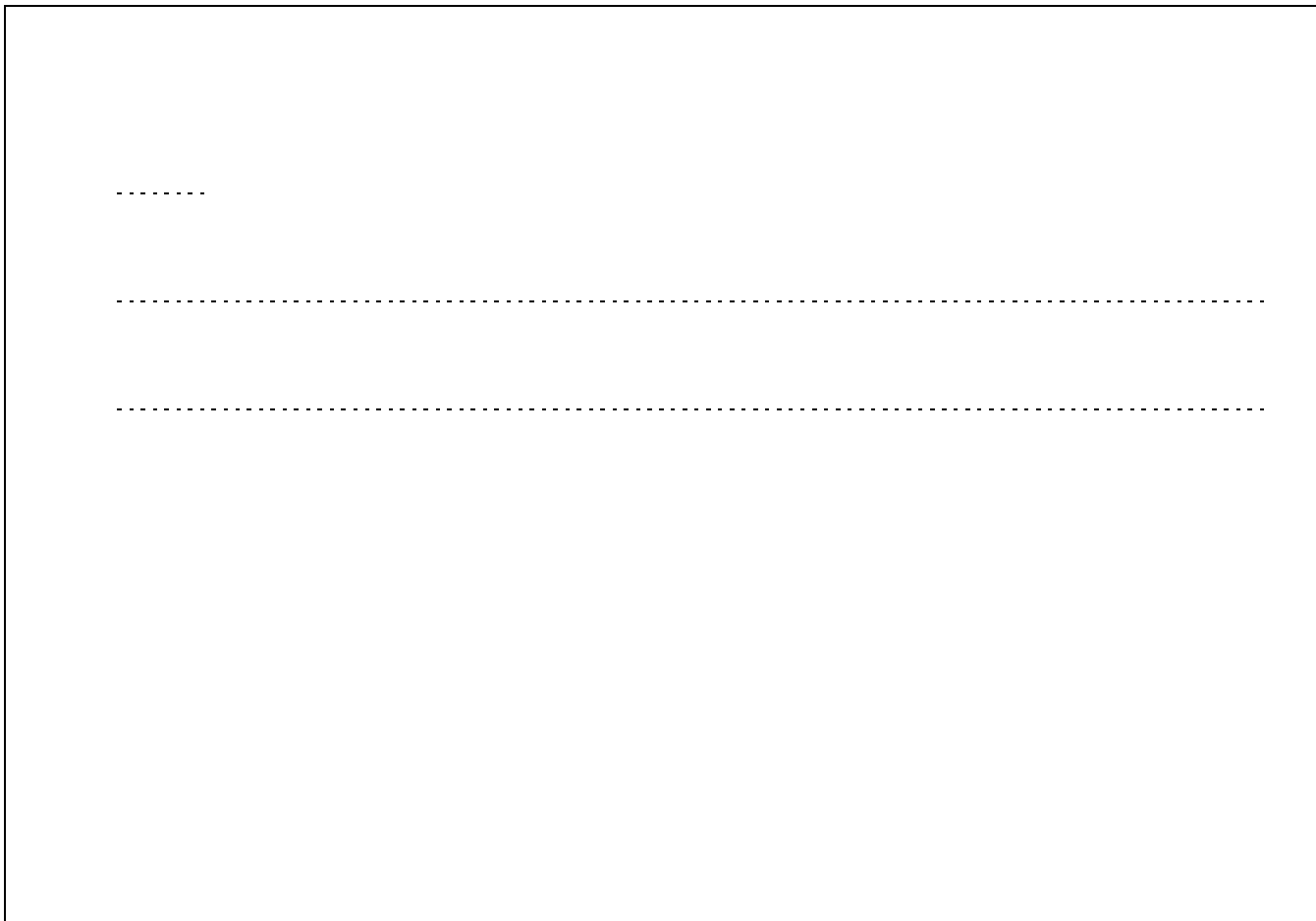
What did parents report as their child's ethnicity, and how does this compare to the ethnic distribution of the student population?

Ethnicity	% of Students, as Reported by Campus Parent Respondents	% of Students in Campus Population
African American	3.7%	9.0%
Asian	1.8%	0.6%
Hispanic	86.2%	79.3%
Native American	0.9%	0.3%
White	7.3%	10.8%

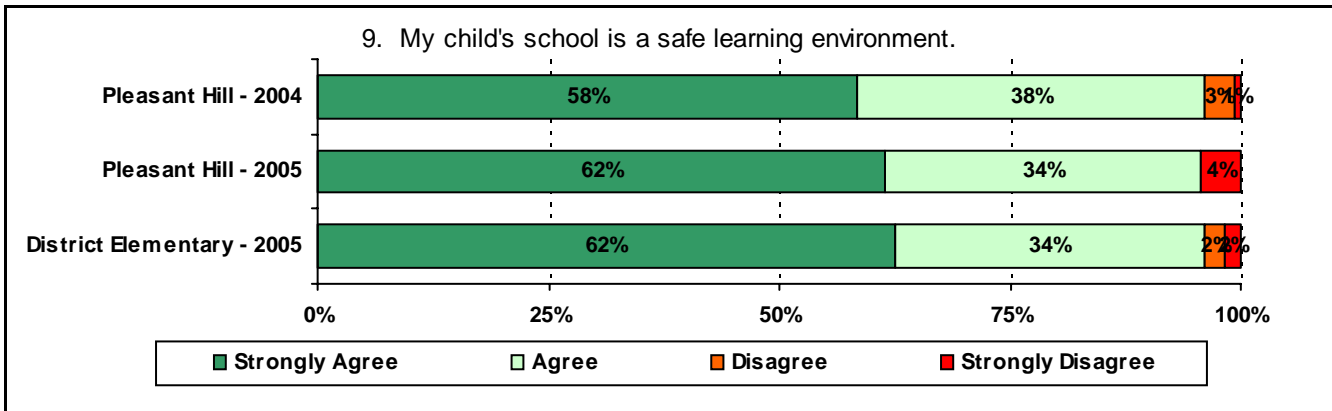
USING THE RESULTS OF THE







* The "Other" category was added to the survey in 2005.

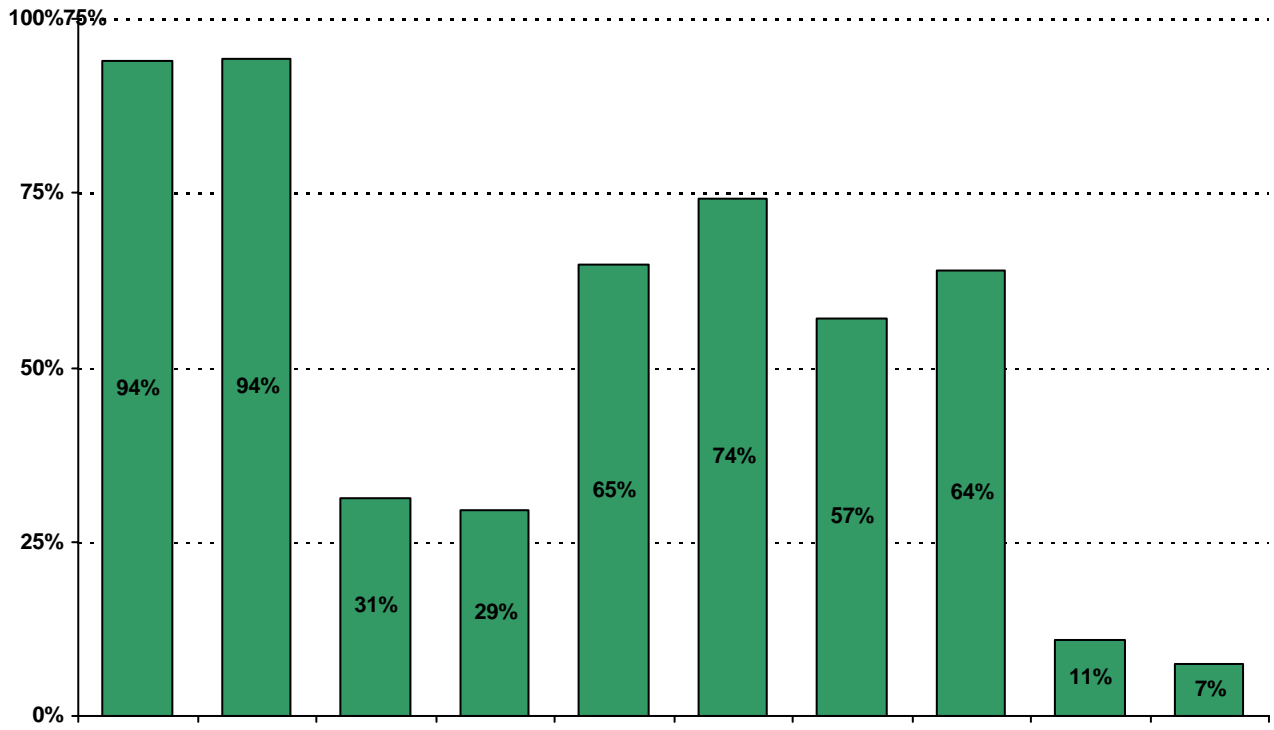


.....



Required

14. My goals for my child include the following plans*:



Item Response Details

Number of Pleasant Hill Elementary School Parent Responses, by Response Option

		Strongly Agree	Agree	Disagree	Strongly Disagree	Don't Know/NA
3a.	n = 127	71	38	1	2	15
3b.	n = 119	61	44	0	2	12
3c.	n = 117	57	42	1	1	16
3d.	n = 122	75	40	0	5	2
3e.	n = 123	84	30	0	3	6
5a.	n = 116	53	39	0	1	23
5b.	n = 113	47	41	0	1	24
5c.	n = 108	40	39	2	1	26
5d.	n = 114	55	43	2	1	13
5e.	n = 116	75	33	1	1	6
6a.	n = 119	59	40	2	2	16
6b.	n = 112	53	42	2	1	14
6c.	n = 113	45	48	2	2	16
6d.	n = 109	43	40	2	4	20
6e.	n = 124	83	32	0	2	7
7a.	n = 116	49	35	3	5	24
7b.	n = 107	44	36	2	5	20
7c.	n = 103	39	37	2	4	21
7d.	n = 106	37	41	2	5	21
7e.	n = 121	75	35	2	3	6
8a.	n = 116	69	32	0	3	12
		61	32	0	2	12

Number of Pleasant Hill Elementary School Parent Responses, by Response Option
(Continued)

		Strongly Agree	Agree	Disagree	Strongly Disagree	Don't Know/NA
11a.	n = 119	67	36	1	0	15
11b.	n = 124	78	36	1	3	6
11c.	n = 118	67	39	2	3	7
11d.	n = 121	75	37	2	1	6
11e.	n = 118	62	36	5	1	14
11f.	n = 117	66	42	1	1	7
11g.	n = 117	63	40	4	2	8
11h.	n = 114	60	37	4	3	10
11i.	n = 110	47	27	2	2	32
12a.	n = 118	42	31	6	6	33
12b.	n = 122	43	38	6	6	29
12c.	n = 119	50	36	7	4	22
12d.	n = 118	50	29	7	7	25
12e.	n = 121	66	39	1	1	14
12f.	n = 121	59	39	5	3	15
13a.	n = 125	77	37	1	2	8
13b.	n = 118	60	38	6	2	12
13c.	n = 118	52	39	1	3	23
13d.	n = 116	51	36	3	1	25
13e.	n = 119	67	43	0	3	6
14.	n = 119	<i>Item 14 did not use the "Strongly Agree" to "Strongly Disagree" scale. Numbers below reflect</i>				