



2005-2006 AISD Parent Survey Results

Pickle Elementary School

The following report contains the results of the 2005-2006 AISD Parent Survey for your campus and all AISD schools at your level. The first section of this report provides a comparison of the campus demographics and the demographics reported by parents who responded to the survey from your campus. The next section describes the percentages of parents selecting specific responses for each survey item, and the final section indicates the actual number of parents who selected each response option. Campus survey results should be examined for areas of strength and opportunities for improvement. Results for all AISD schools at your level and results for your campus from 2004-2005 are presented to provide a reference for comparison.

How many parents responded to the survey in 2004-2005 and 2005-2006, and how does this compare to the number of students in the population each year?

	Campus	District EL	District MS	District HS
# of Parents Responding in 2004-2005	221	12,137	2,007	2,700
# of Students in 2004-2005	592	43,566	15,705	19,976
Ratio of Parent Respondents to Students, 2004-2005	37.3%	27.8%	12.8%	13.5%
# of Parents Responding in 2005-2006	104	10,900	1,801	2,085
# of Students in 2005-2006	641	44,827	15,624	20,081
Ratio of Parent Respondents to Students, 2005-2006	16.2%	24.3%	11.5%	10.4%

Note: The ratio of parent respondents to students is listed above as a percentage for ease of interpretation; however, it is the number of parents who responded per 100 students enrolled.

What did parents report as their child's ethnicity, and how does this compare to the ethnic distribution of the student population?

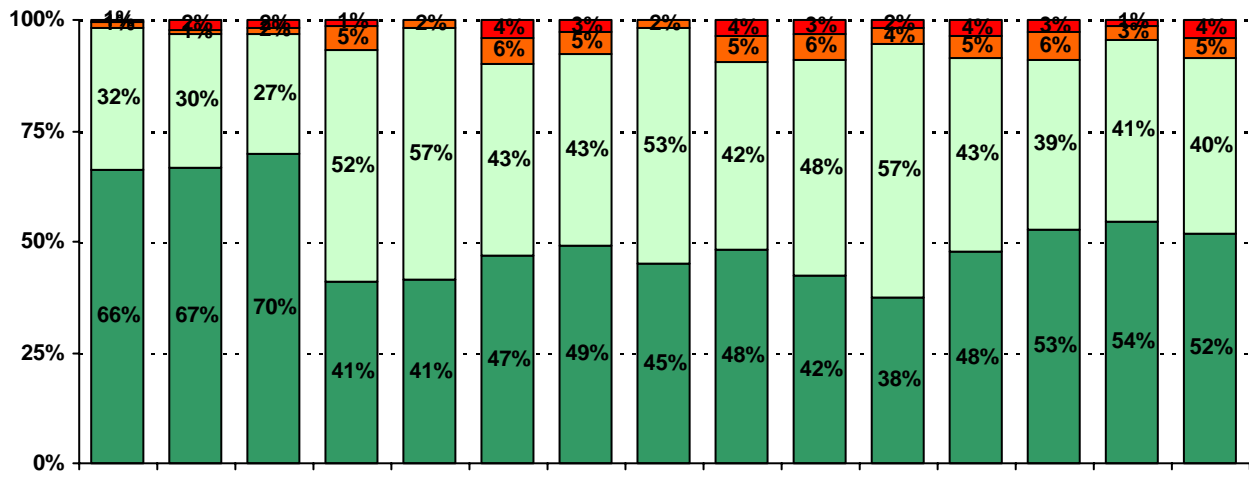
Ethnicity	% of Students, as Reported by Campus Parent Respondents	% of Students in 0.09.8%
African American		18.4%
Asian		0.0%
Hispanic		81.6%
Native American		0.0%
White		0.0%

Grade	% of Students, as Reported by Campus Parent Respondents	% of Students in Campus Population
EC	0.0%	0.9%
PK	0.0%	15.9%
K	2.3%	16.2%
1st	31.8%	15.8%
2nd	40.9%	15.3%
3rd	20.5%	12.2%
4th	0.0%	12.2%
5th	4.5%	11.5%
6th	N/A	N/A

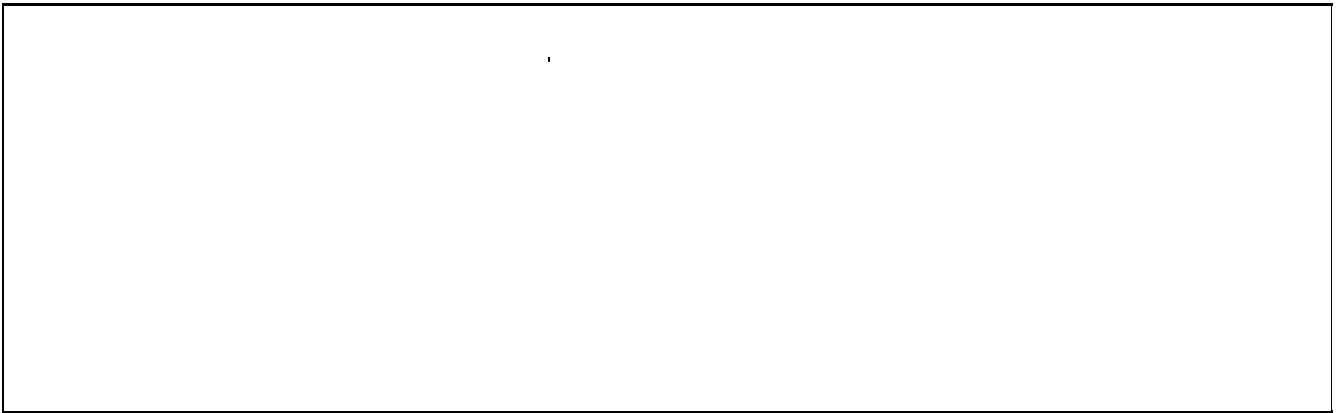
Not52.en:9((StCam)68(ud5e)5.4Tc(Not5-1.9118 Ti0.2513 (0.020 TD(40.9%)Tj) -1.8408 TD(20R3-a%)Tj)Tpn da%)Tj3.984

USING THE RESULTS OF THE AISD PARENT SURVEY





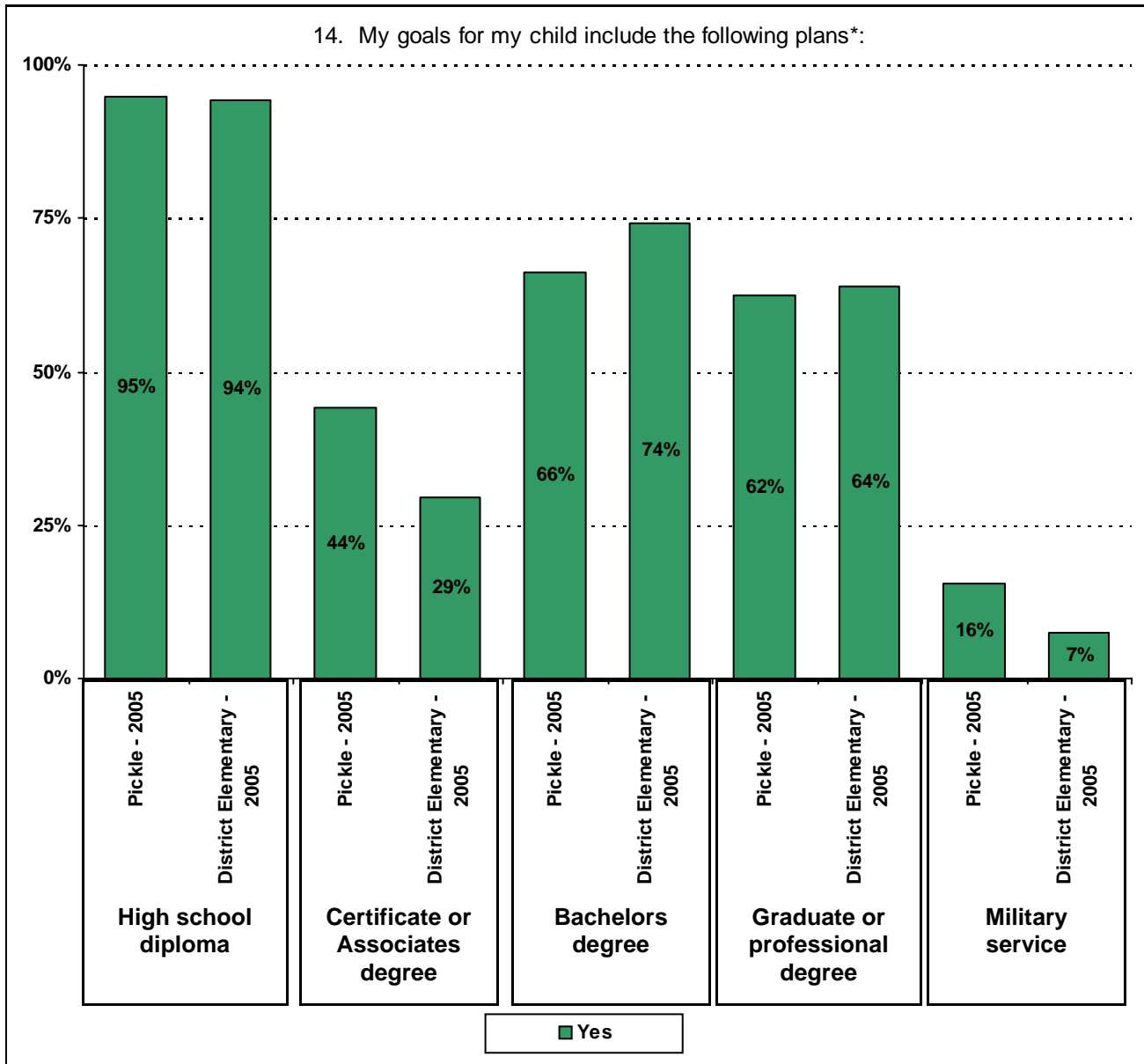
1%1%



.....



Required



* Item 14 was added to the survey in 2005. Respondents who selected Certificate, Associates, Bachelors, or Graduate degree were included in the "Yes" percentage for High School diploma, even if they did not select the High School diploma option. Respondents who selected Graduate degree were included in the "Yes" percentage for Bachelors degree, even if they did not select the Bachelors degree option.

Item Response Details

Number of Pickle Elementary School Parent Responses, by Response Option

		Strongly Agree	Agree	Disagree	Strongly Disagree	Don't Know/NA
4a.	n = 87	54	26	0	2	5
4b.	n = 72	39	24	1	2	6
4c.	n = 77	31	31	1	4	10
4d.	n = 75	32	32	5	3	3
4e.	n = 86	60	20	0	2	4
5a.	n = 81	47	25	2	3	4
5b.	n = 70	31	25	3	3	8
5c.	n = 76	32	31	2	3	8
5d.	n = 78	40	30	2	2	4
5e.	n = 85	55	25	0	4	1
6a.	n = 72	37	28	2	1	4
6b.	n = 62	21	32	2	1	6
6c.	n = 66	26	31	1	0	8
6d.	n = 64	24	33	1	0	6
6e.	n = 91	60	27	1	2	1
7a.	n = 75	34	28	2	4	7
7b.	n = 62	19	27	3	3	10
7c.	n = 65	24	28	1	1	11
7d.	n = 63	17	30	2	4	10
7e.	n = 84	50	27	1	1	5
8a.	n = 75	47	23	0	0	5
8b.	n = 64	37	23	0	0	4
8c.	n = 70	38	27	1	1	3
8d.	n = 69	41	24	0	0	4
8e.	n = 80	55	21	0	1	3
8f.	n = 68	39	19	4	3	0
9.	n = 94	60	27	2	2	3
10.	n = 90	49	35	1	2	3

Number of Pickle Elementary School Parent Responses, by Response Option
(Continued)

		Strongly Agree	Agree	Disagree	Strongly Disagree	Don't Know/NA
11a.	n = 75	41	28	0	2	4
11b.	n = 78	49	28	0	0	1
11c.	n = 74	39	27	2	0	6
11d.	n = 81	49	28	2	1	1
11e.	n = 77	44	26	1	0	6
11f.	n = 79	48	30	1	0	0
11g.	n = 73	47	23	1	0	2
11h.	n = 70	39	27	0	1	3
11i.	n = 63	29	19	1	0	14
12a.	n = 82	45	23	5	0	9
12b.	n = 79	44	29	1	2	3
12c.	n = 70	33	21	5	1	10
12d.	n = 82	36	19	3	2	10
12e.	n = 77	47	27	2	0	1
12f.	n = 73	38	25	1	0	9
13a.	n = 89	59	28	0	1	1
13b.	n = 75	46	22	1	1	5
13c.	n = 70	42	19	0	0	9
13d.	n = 77	46	22	1	0	8
13e.	n = 79	54	24	0	0	1
14.	n = 77	<i>Item 14 did not use the "Strongly Agree" to "Strongly Disagree" scale. Numbers below reflect the number of parents selecting each goal. These numbers will not sum to the total number of item respondents because parents may select multiple goals.</i>				
		High School diploma	Certificate/ Associates degree	Bachelors degree	Graduate/ Professional degree	Military service
		73	34	51	48	12