



# 2005-2006 AISD Parent Survey Results

## Pearce Middle School

The following report contains the results of the 2005-2006 AISD Parent Survey for your campus and all AISD schools at your level. The first section of this report provides a brief overview of the survey results for your campus. The next section describes the percentages of parents who chose each response option, and the final section indicates the actual number of responses for each response option. Campus survey results should be examined for areas of strength and areas for improvement. Results for all AISD schools at your level and results from the 2004-2005 survey are presented to provide a reference for comparison. Please note that response rates by campus, ranging from 0.3% to 43.2%, are generally lower than some campuses than others.

### How many parents responded to the survey in 2004-2005 and 2005-2006, and how does this compare to the number of students in the population each year?

	Campus	District EL	District MS	District HS
<b># of Parents Responding in 2004-2005</b>	15	12,137	2,007	2,700
<b># of Students in 2004-2005</b>	800	43,566	15,705	19,976
<i>Ratio of Parent Respondents to Students, 2004-2005</i>	<b>1.9%</b>	<b>27.8%</b>	<b>12.8%</b>	<b>13.5%</b>
<b># of Parents Responding in 2005-2006</b>	34	10,900	1,801	2,085
<b># of Students in 2005-2006</b>	812	44,827	15,624	20,081
<i>Ratio of Parent Respondents to Students, 2005-2006</i>	<b>4.2%</b>	<b>24.3%</b>	<b>11.5%</b>	<b>10.4%</b>

Note: The ratio of parent respondents to students is listed above as a percentage for ease of interpretation; however, it is the number of parents who responded per 100 students enrolled.

### What did parents report as their child's ethnicity, and how does this compare to the ethnic distribution of the student population?

Ethnicity	% of Students, as Reported by Campus Parent Respondents	% of Students in Campus Population
African American	43.8%	40.3%
Asian	0.0%	0.1%
Hispanic	56.3%	57.6%
Native American	0.0%	0.0%
White	0.0%	2.0%

**What did parents report as their child's grade, and how does this compare to the grade level distribution of the student population?**

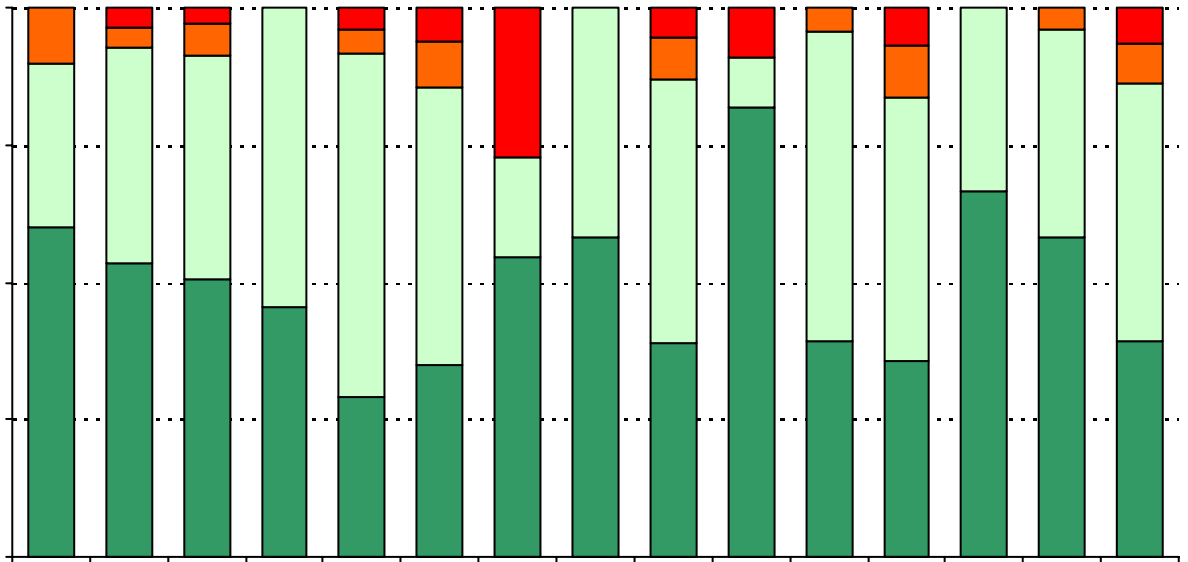
<b>Grade</b>	<b>% of Students, as Reported by Campus Parent Respondents</b>	<b>% of Students in Campus Population</b>
<b>6th</b>	54.8%	32.0%
<b>7th</b>	32.3%	35.7%
<b>8th</b>	12.9%	32.3%
<b>9th</b>	N/A	N/A
<b>10th</b>	N/A	N/A
<b>11th</b>	N/A	N/A
<b>12th</b>	N/A	N/A

Note: Student population data are based on Fall PEIMS data submitted by the district to TEA, and may differ from the official AEIS report.

#### **USING THE RESULTS OF THE AISD PARENT SURVEY**

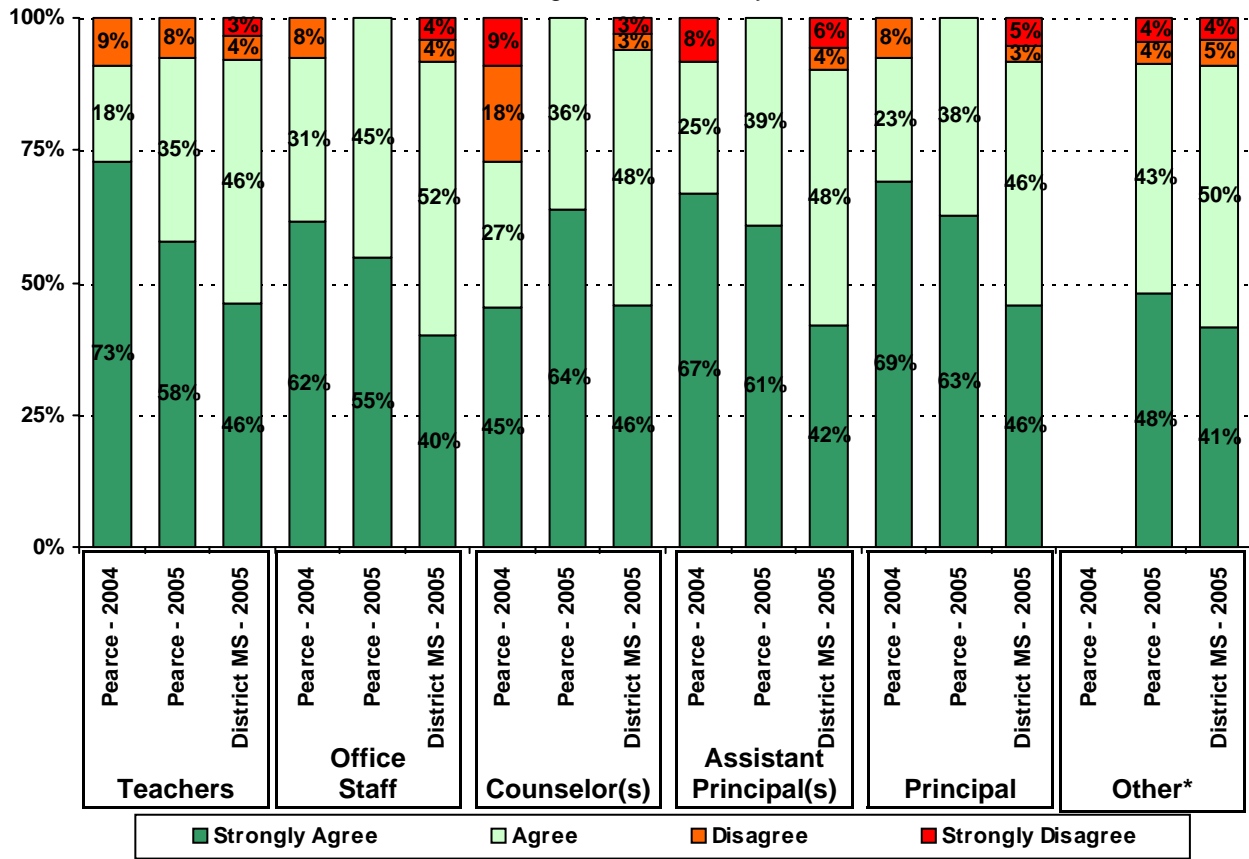
Each survey item is presented below, followed by a bar graph containing your school's results for two years and this year's results for all campuses at your level. You will be able to identify areas

545145293555839829095675830%



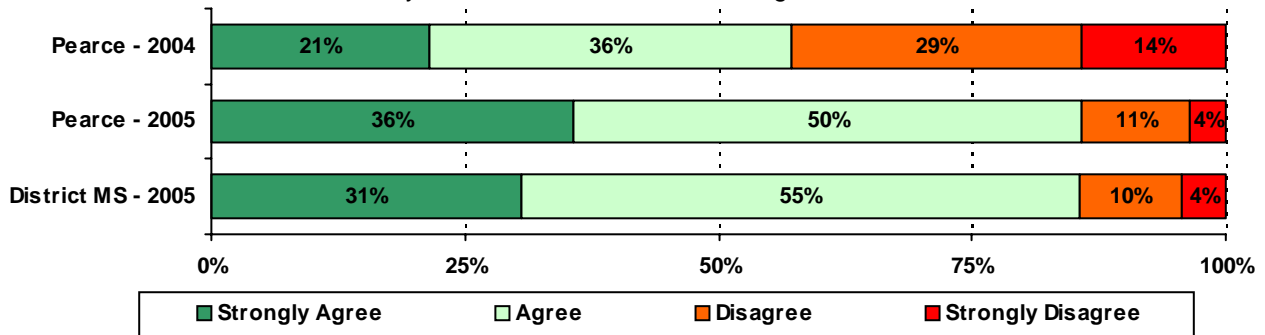


8. The following school staff treat my child fairly with respect to culture, gender, ethnicity, age, religion, and disability.

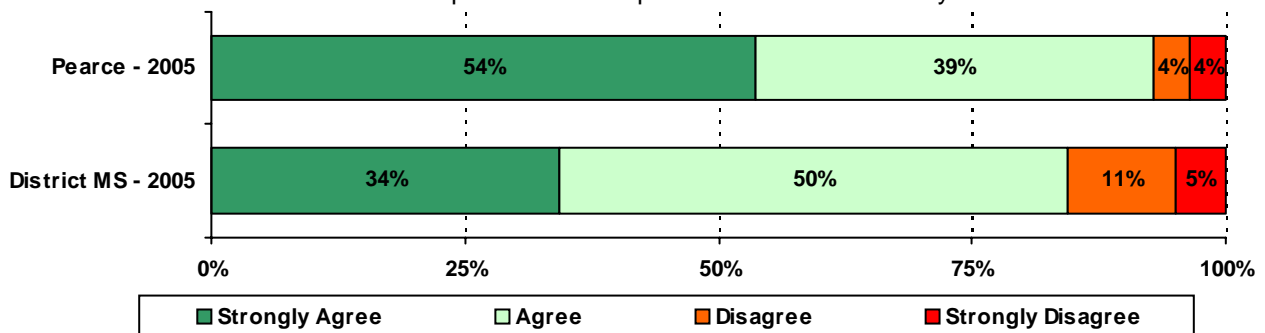


\* The "Other" category was added to the survey in 2005.

9. My child's school is a safe learning environment.



10. School staff provide me with positive feedback about my child.\*



\* Item 10 was added to the survey in 2005.



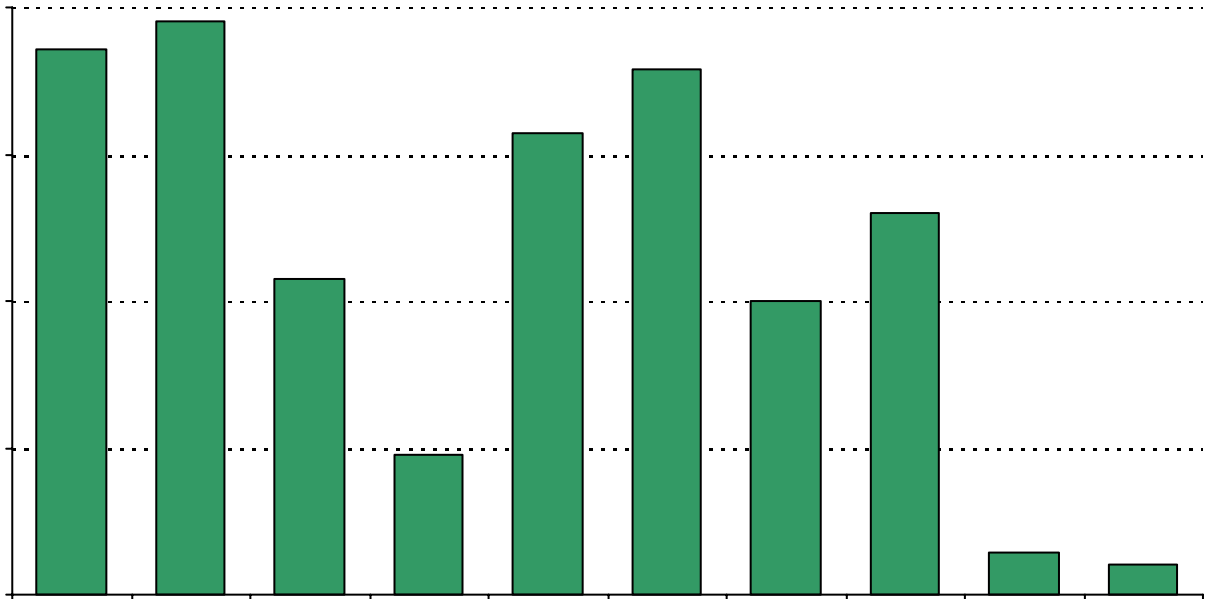


**Required**





15. My goals for m.5 -0.72 ref464.5als 2322.738 -707.893 25.531 197.4.9(23i5)go 23i5 i/Cs.5 n(23i51



## Item Response Details

Number of Pearce Middle School Parent Responses, by Response Option

		Strongly Agree	Agree	Disagree	Strongly Disagree	Don't Know/NA
4a.	n = 29	14	9	1	0	5
3b.	n = 28		16	0	0	2
3c.	n = 29	13	13	0	0	3
3d.	n = 29	8	19	0	2	0
3e.	n = 29	10	16	2	1	0
5a.	n = 29	14	9	1	0	5
5b.	n = 28	9	13	1	0	5
5c.	n = 29	14	10	0	0	5
5d.	n = 28	7	15	1	1	4
5e.	n = 30	15	11	1	1	2
6a.	n = 30	15	9	2	0	4
6b.	n = 28	8	13	2	0	5
6c.	n = 27	12	6	1	0	8
6d.	n = 27	7	13	1	1	5
6e.	n = 30	17	10	1	0	2
7a.	n = 30	14	8	2	0	6
7b.	n = 28	12	9	2	0	5
7c.	n = 28	13	6	2	0	7
7d.	n = 29	8	12	2	1	6
7e.	n = 27	13	12	0	1	1
8a.	n = 27	15	9	0	0	3
8b.	n = 26	14	9	0	0	3
8c.	n = 26	14	8	0	0	4
8d.	n = 26	12	10	0	0	4
8e.	n = 27	15	9	2	0	1

Number of Pearce Middle School Parent Responses, by Response Option  
(Continued)

		Strongly Agree	Agree	Disagree	Strongly Disagree	Don't Know/NA	
11a.	n = 28	16	10	0	1	1	
11b.	n = 27	15	10	0	1	1	
11c.	n = 27	15	10	1	0	1	
11d.	n = 26	15	9	0	0	2	
11e.	n = 25	12	10	0	1	2	
11f.	n = 28	16	10	0	1	1	
11g.	n = 26	13	11	0	1	1	
11h.	n = 27	11	13	0	1	2	
11i.	n = 27	9	14	0	1	3	
12a.	n = 29	11	8	3	2	5	
12b.	n = 25	9	8	1	1	6	
12c.	n = 26	9	9	4	2	2	
12d.	n = 29	14	6	3	1	1	
12e.	n = 28	15	10	2	1	0	
12f.	n = 26	11	11	2	1	1	
13a.	n = 29	18	9	0	1	1	
13b.	n = 27	8	9	6	1	3	
13c.	n = 28	12	11	3	1	1	
13d.	n = 28	14	12	0	1	1	
13e.	n = 27	14	11	0	1	1	
15.	n = 28	<p><i>Item 14 did not use the "Strongly Agree" to "Strongly Disagree" scale. Numbers below reflect the number of parents selecting each goal. These numbers will not sum to the total number of item respondents because parents may select multiple goals.</i></p>					
				Bachelors degree	Graduate/Professional 13	11	