

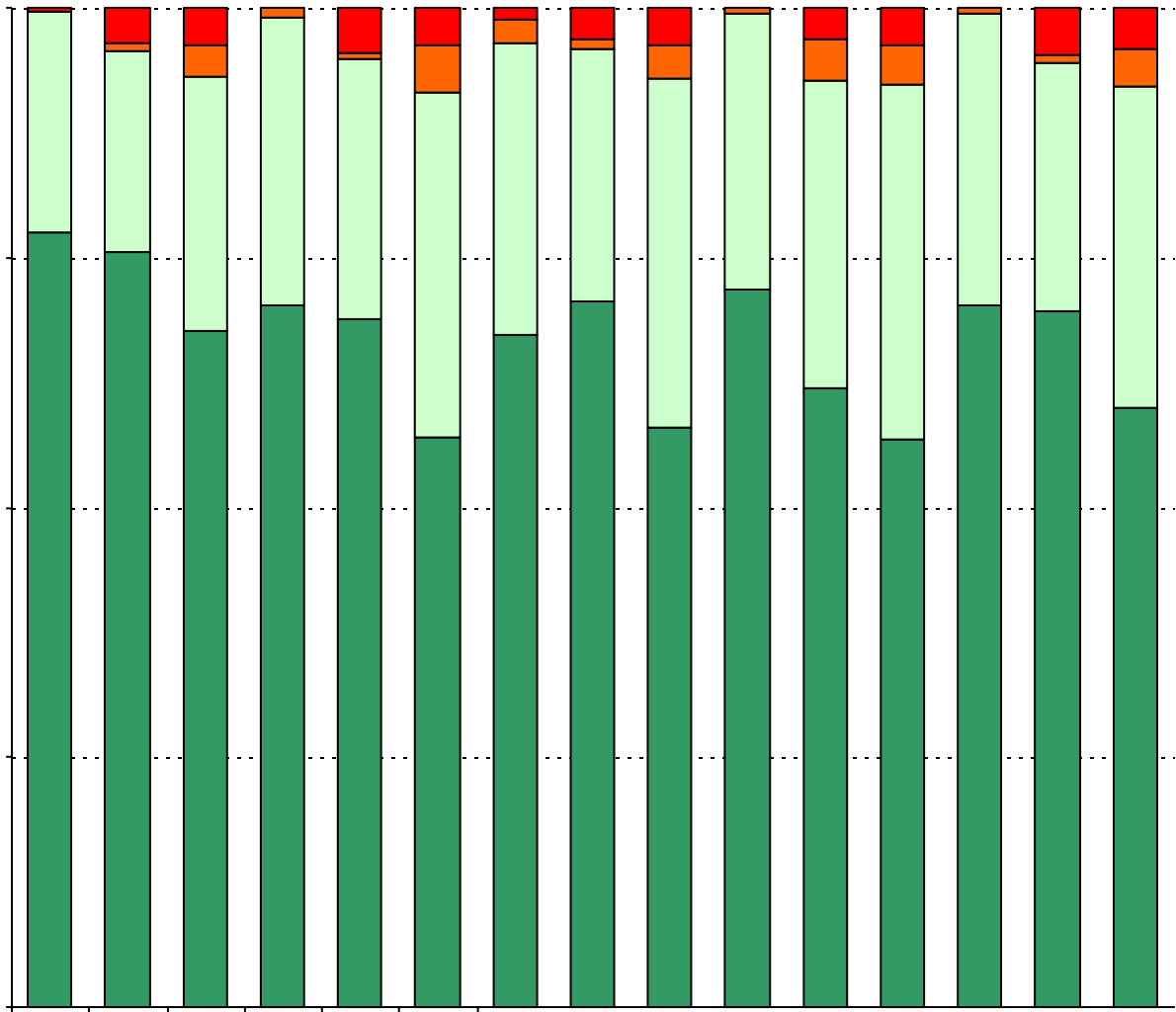
How many parents responded to the survey in 2005-2006 and 2006-2007, and how does this compare to the number of students in the population each year?

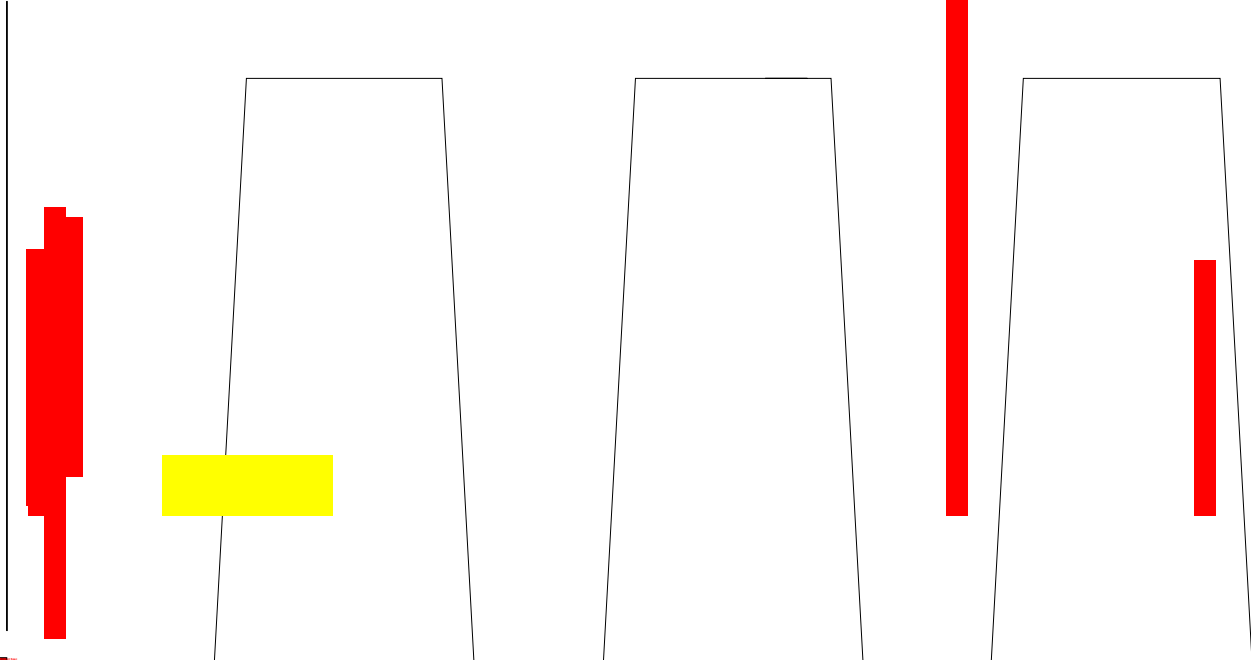
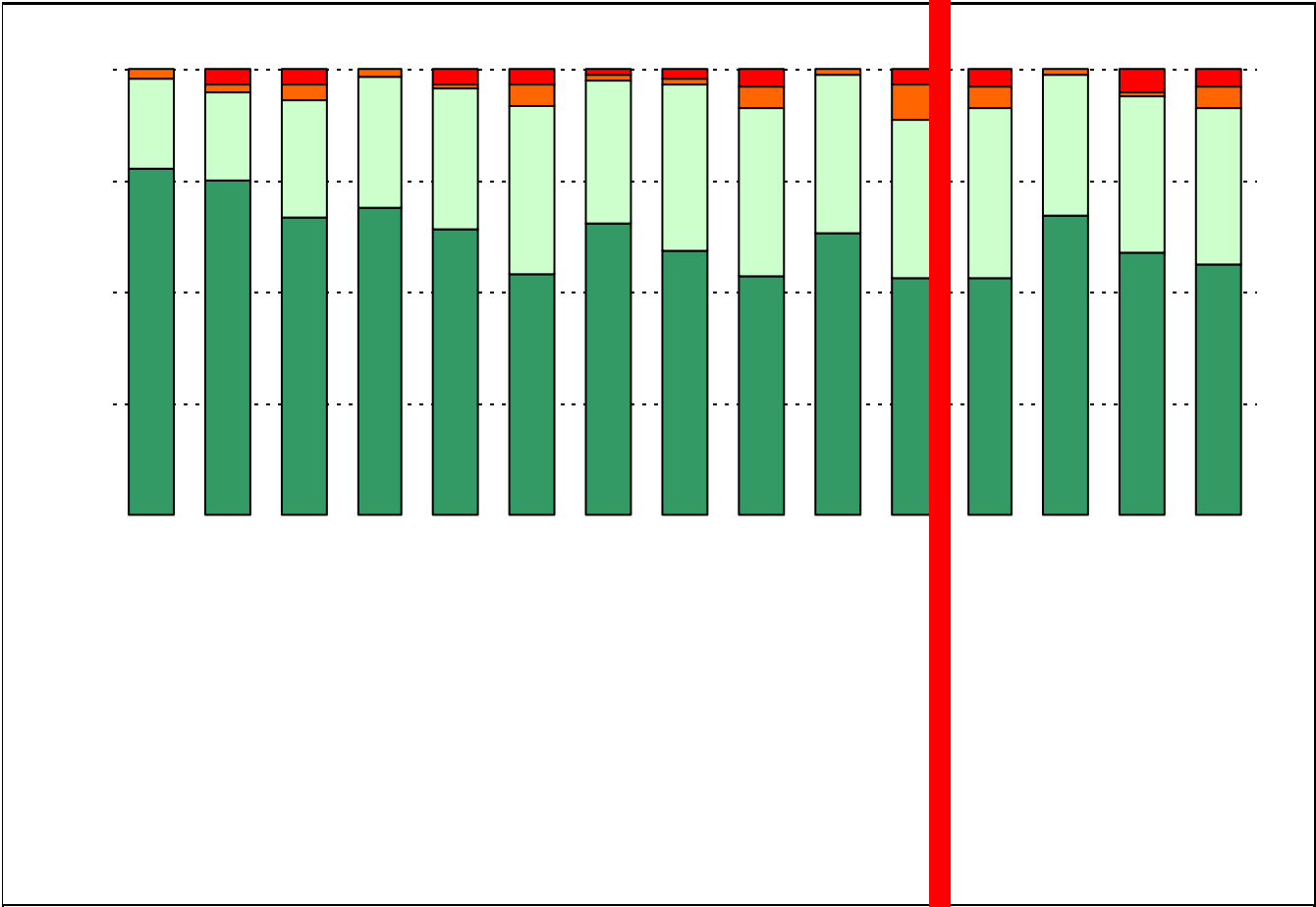
	Campus	District EL	District MS	District HS
	215			
	784			
	140			
	773			

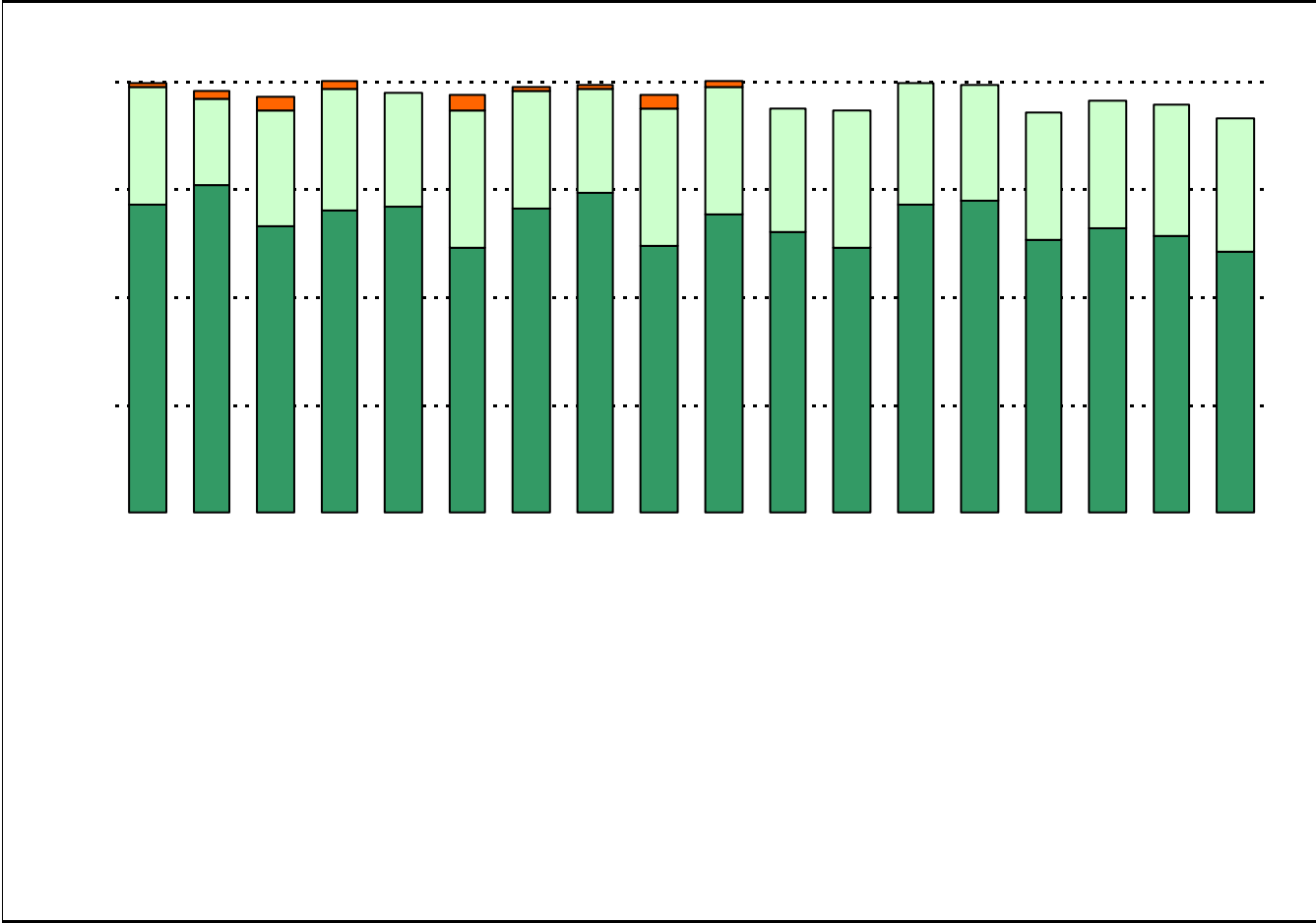
Grade	% of Students, as Reported by Campus Parent Respondents	% of Students in Campus Population
EC	0.0%	0.4%
PK	2.9%	5.0%
K	16.2%	15.1%
1st	14.0%	16.3%
2nd	15.4%	15.1%
3rd	9.6%	14.1%
4th	22.1%	15.8%
5th	19.9%	18.1%
6th	N/A	N/A

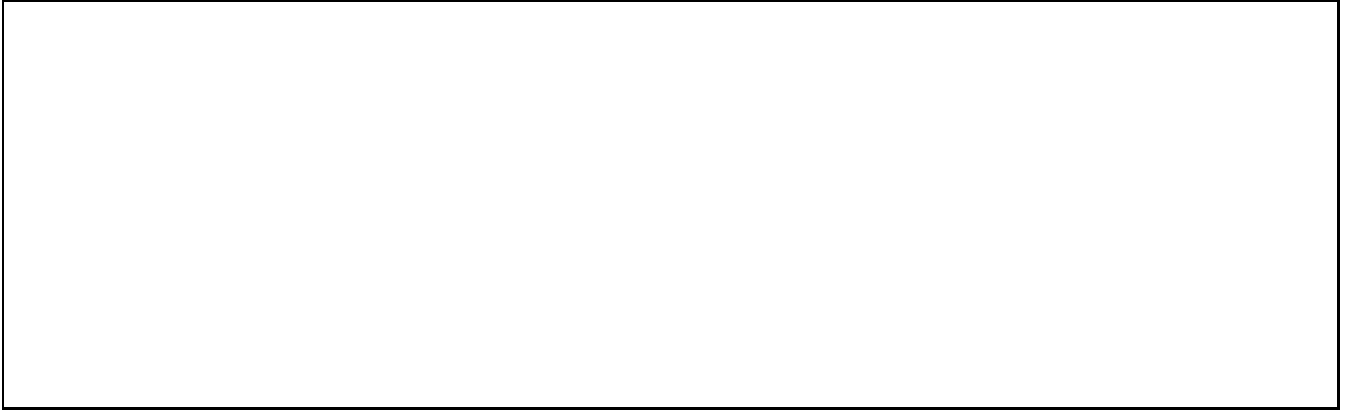
Note: Student population data are based on Fall PEIMS data submitted by the district to TEA, and may differ from the official AEIS report.

USING THE RESULTS OF THE AISD PARENT SURVEY



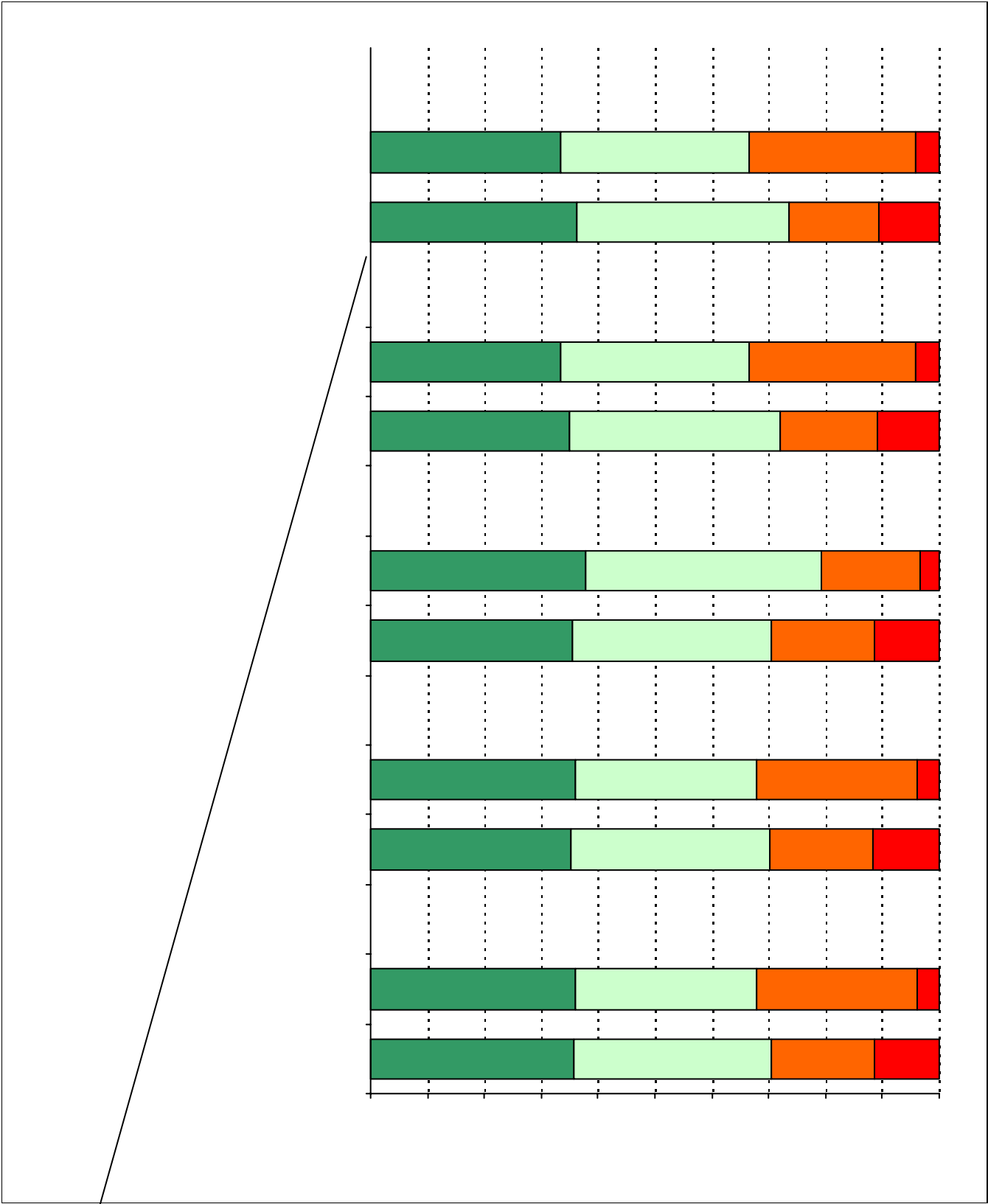


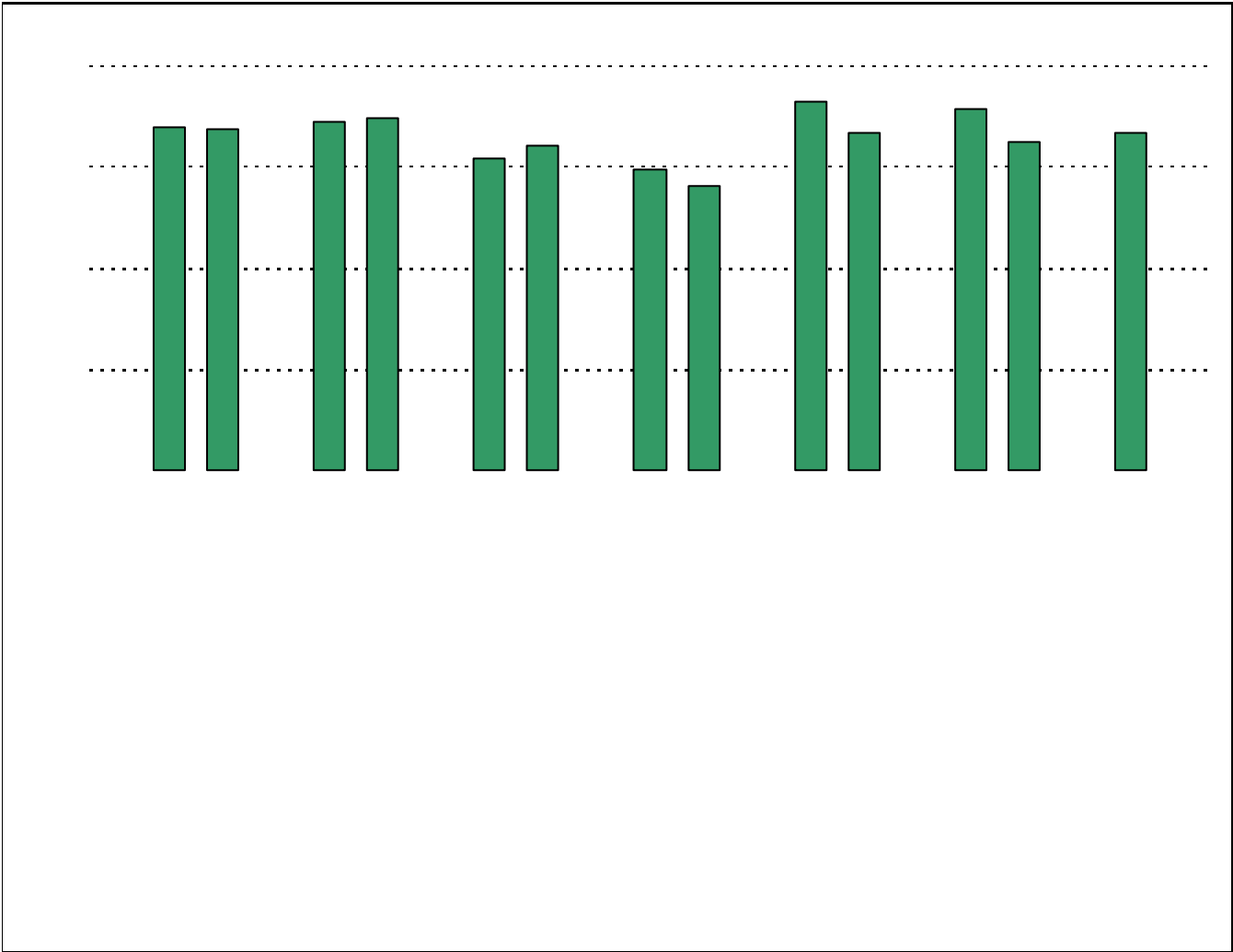


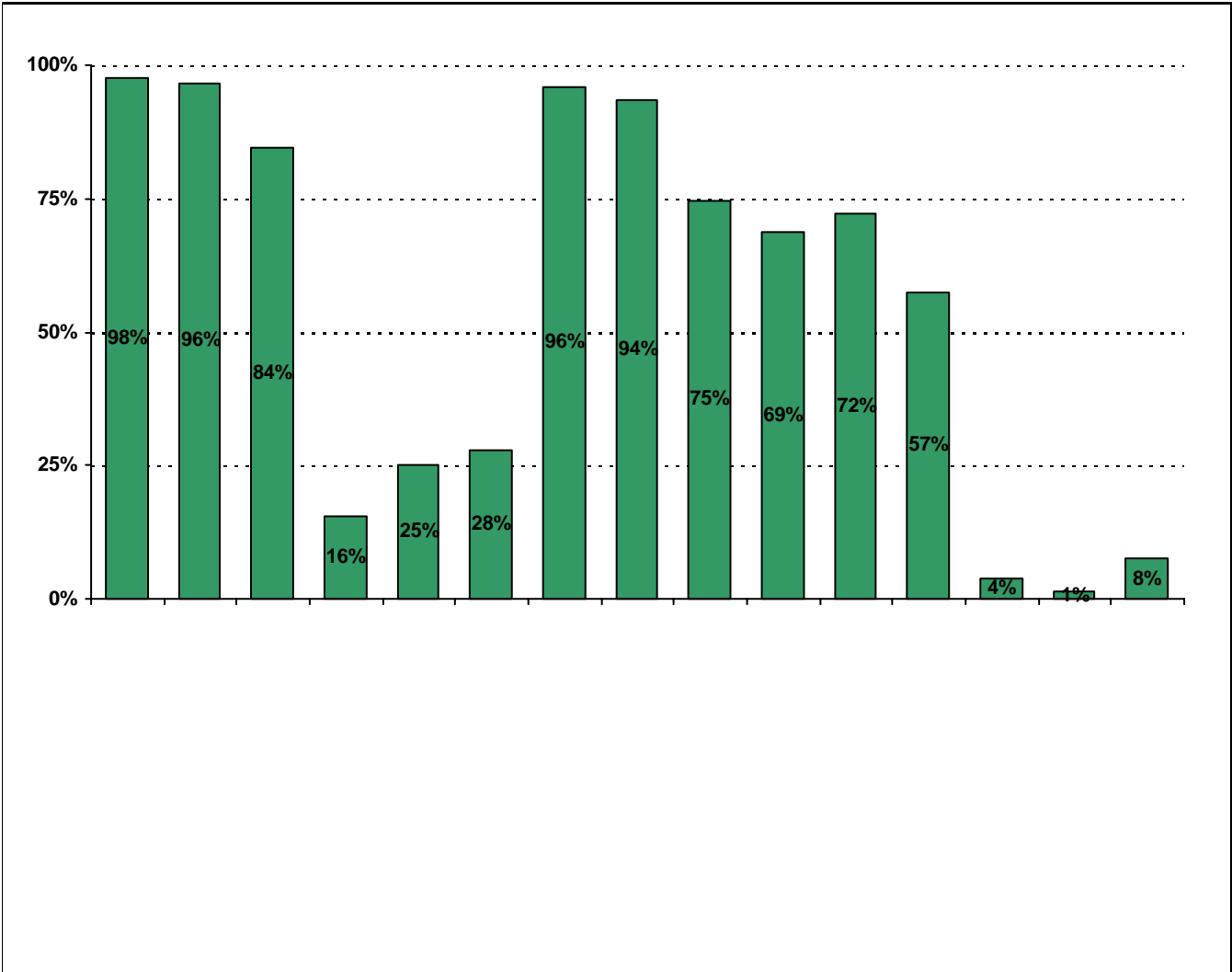


A rectangular box containing ten vertical dotted lines, likely a template for handwriting practice. The lines are evenly spaced and extend from the top to the bottom of the box. The box is empty, with no text or other markings inside.

**Required
curriculum**







Item Response Details

Number of Patton Elementary School Parent Responses, by Response Option

		Strongly Agree	Agree	Disagree	Strongly Disagree	Don't Know/NA
4.	n = 131		0	131		
5a.	n = 140	89	32	1	6	12
5b.	n = 139	60	30	4	3	42
5c.	n = 138	67	24	1	3	43
5d.	n = 138	93	35	1	6	3
5e.	n = 139	105	28	1	5	0
6a.	n = 134	66	39	1	6	22
6b.	n = 134	46	31	7	3	47
6c.	n = 134	51	32	1	2	48
6d.	n = 135	70	34	1	4	26
6e.	n = 138	103	27	2	5	1
7a.	n = 134	57	39	6	3	29
7b.	n = 131	42	25	8	6	50
7c.	n = 132	42	31	3	4	52
7d.	n = 130	52	29	5	2	42
7e.	n = 138	96	34	1	4	3
8a.	n = 134	58	35	3	2	36
8b.	n = 132	40	29	4	4	55
8c.	n = 132	46	28	2	2	54
8d.	n = 132	45	27	2	4	54
8e.	n = 138	90	37	2	5	4
9a.	n = 135	80	30	0	1	24
9b.	n = 135	63	28	3	3	38
9c.	n = 134	74	24	1	1	34
9d.	n = 134	78	29	0	3	24
9e.	n = 137	97	26	2	3	9
9f.	n = 135	72	34	2	4	23
10.	n = 137	22	19	9	13	74
11.	n = 138	84	39	2	5	8
12.	n = 137	84	41	1	7	4

