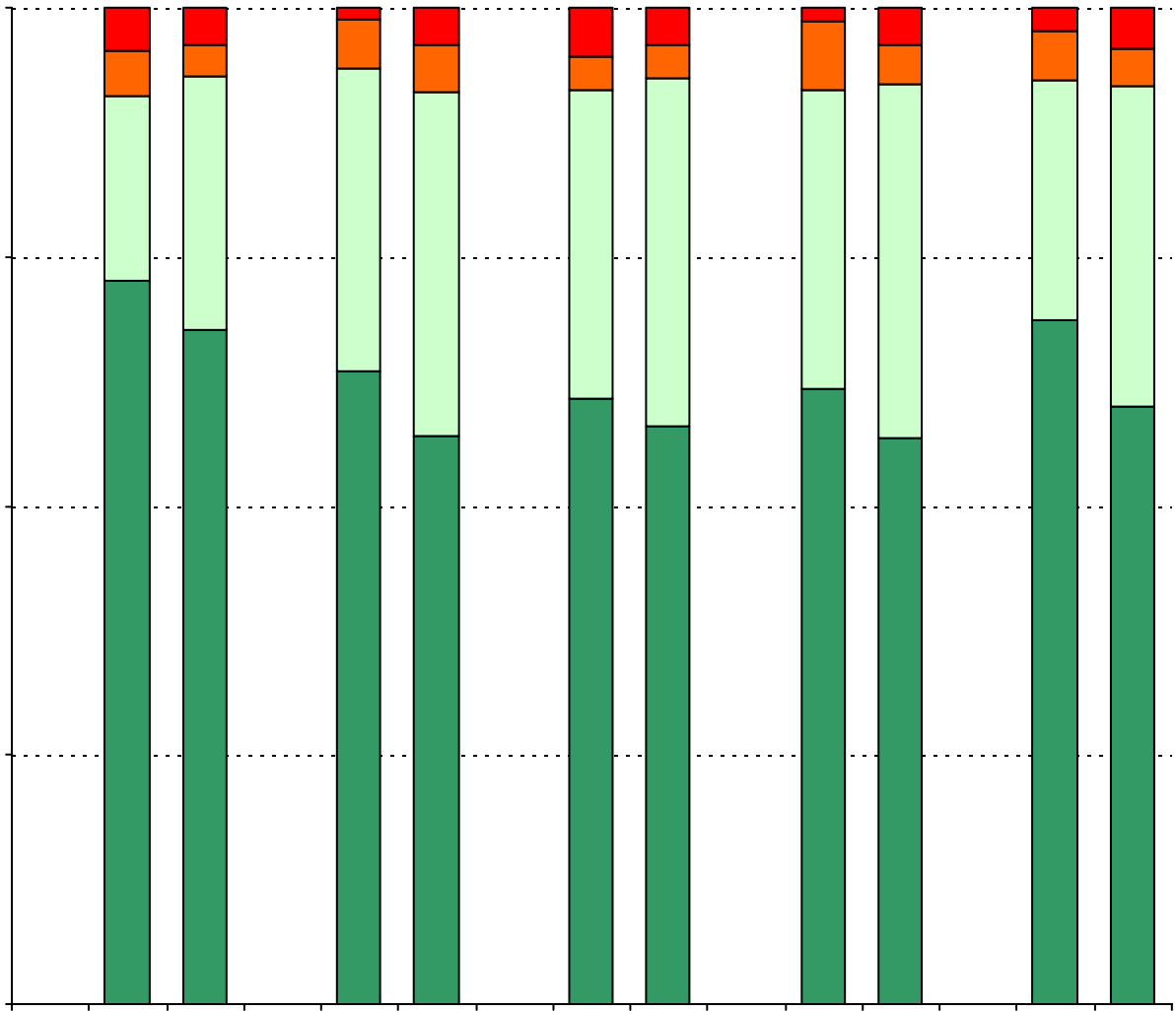
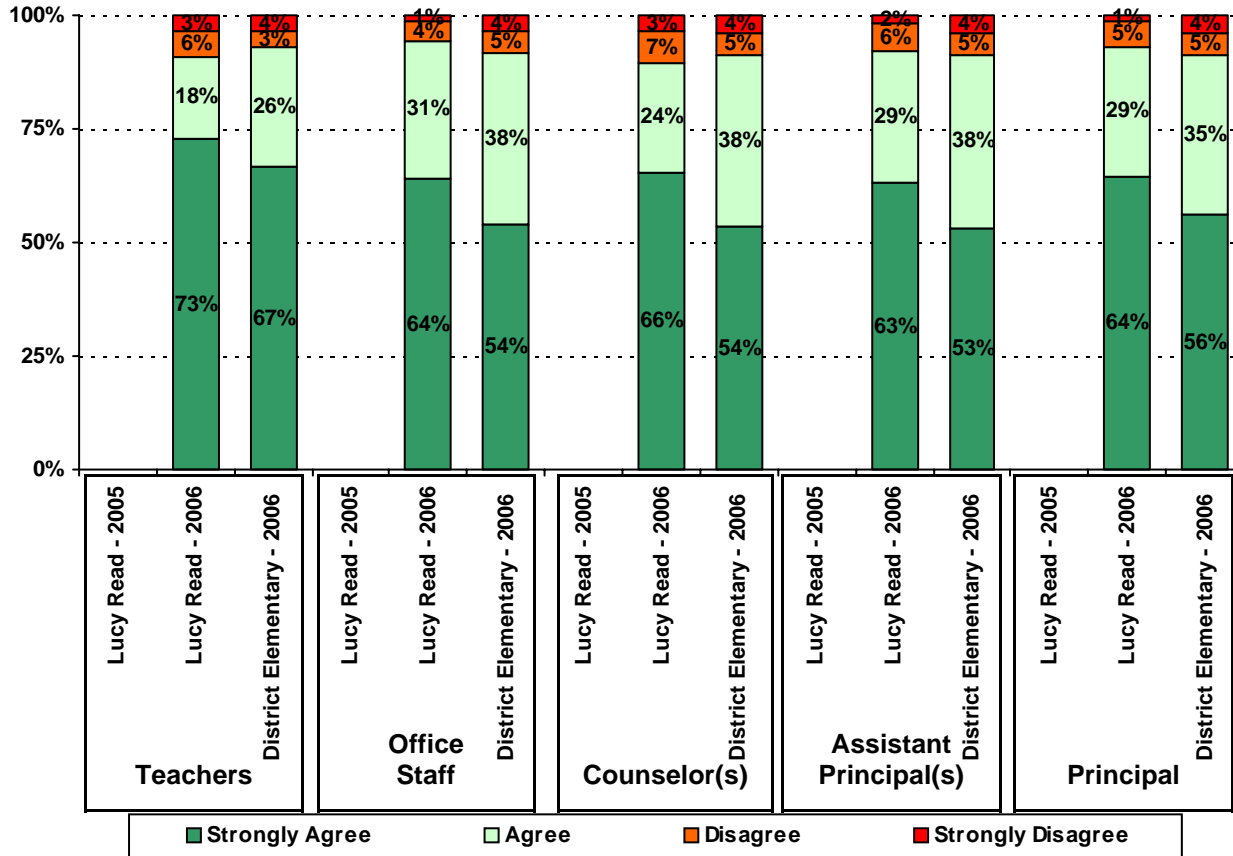


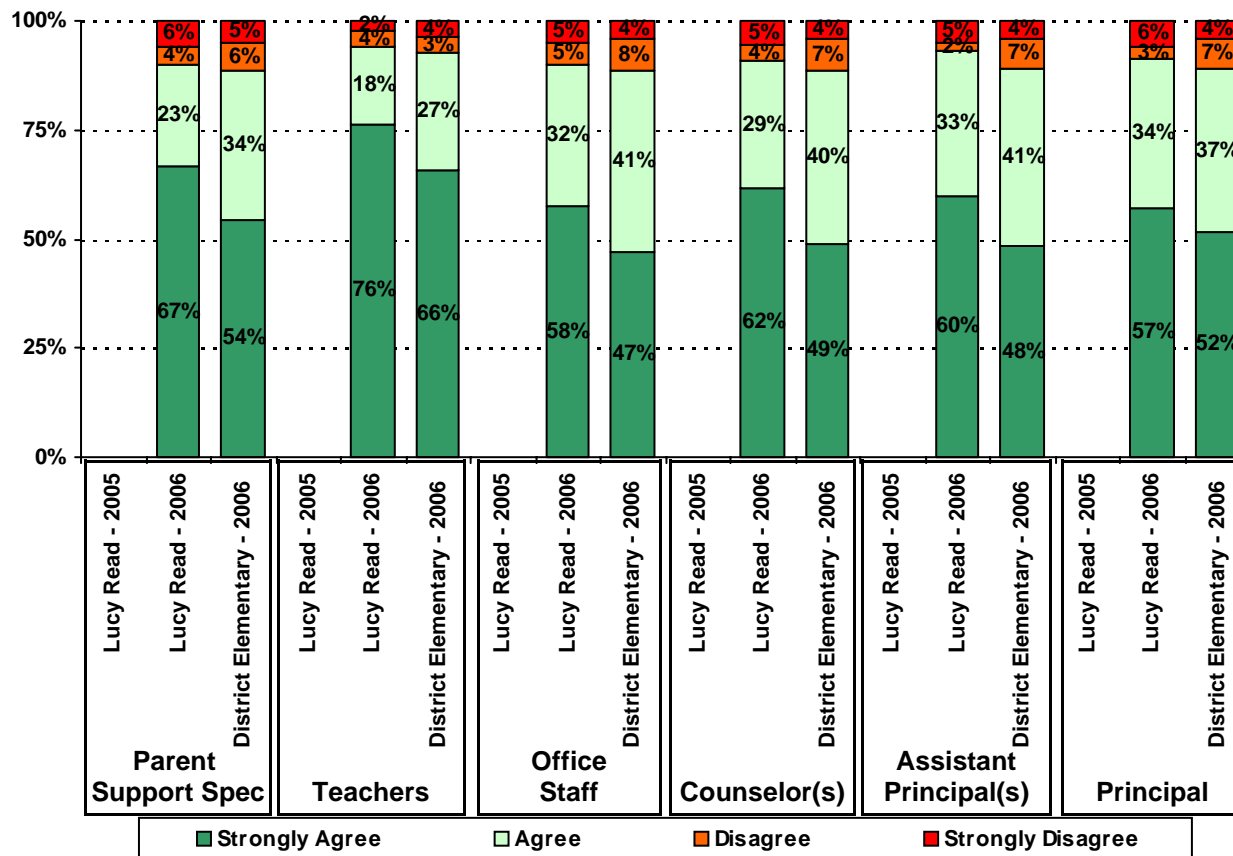
5. The follo follo fa62(i)25(4701 l478.9150901 0901 s)901 162.36 7901 s



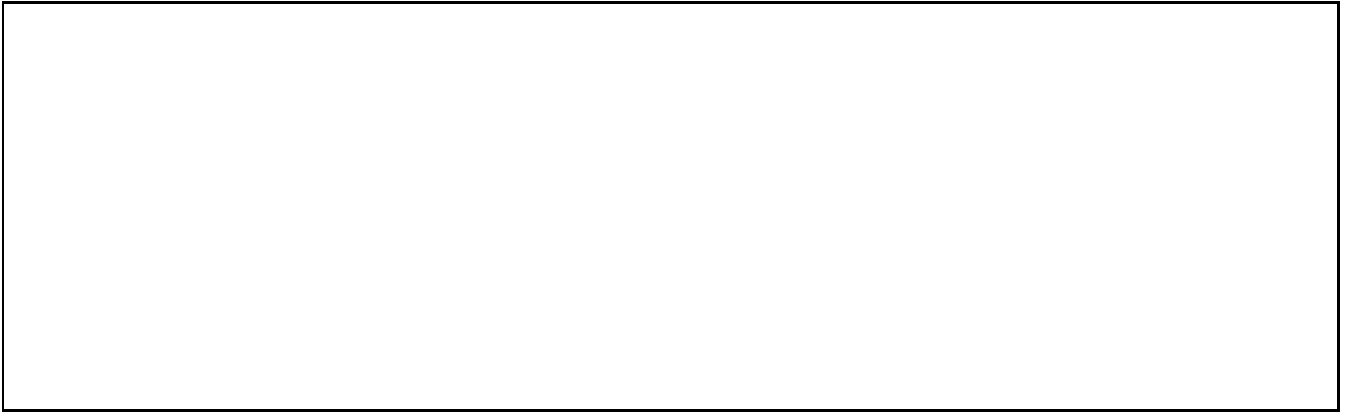
6. The following school staff provide me with opportunities for two-way communication.



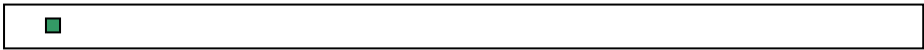
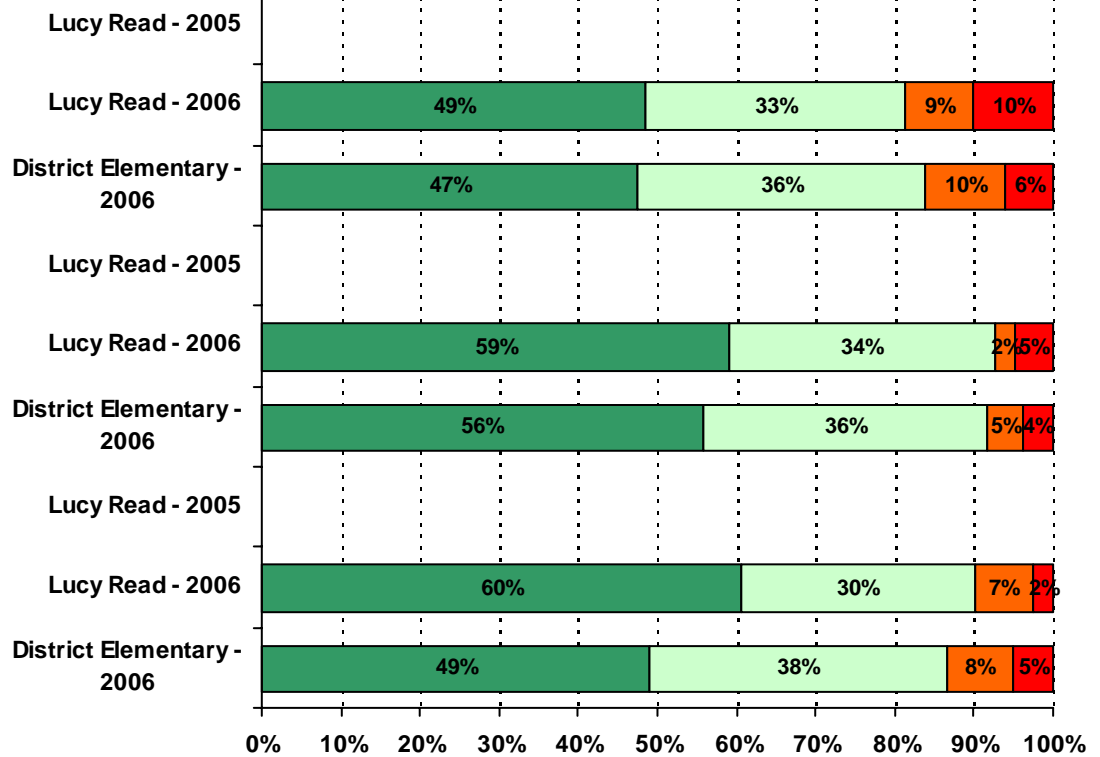
7. The following school staff have helped me to become more involved in my child's education.



A rectangular box with a solid black border. Inside the box, there are three horizontal dotted lines. A vertical solid black line is positioned to the right of the first dotted line, extending from the top to the bottom of the box. The second and third dotted lines are continuous across the entire width of the box.



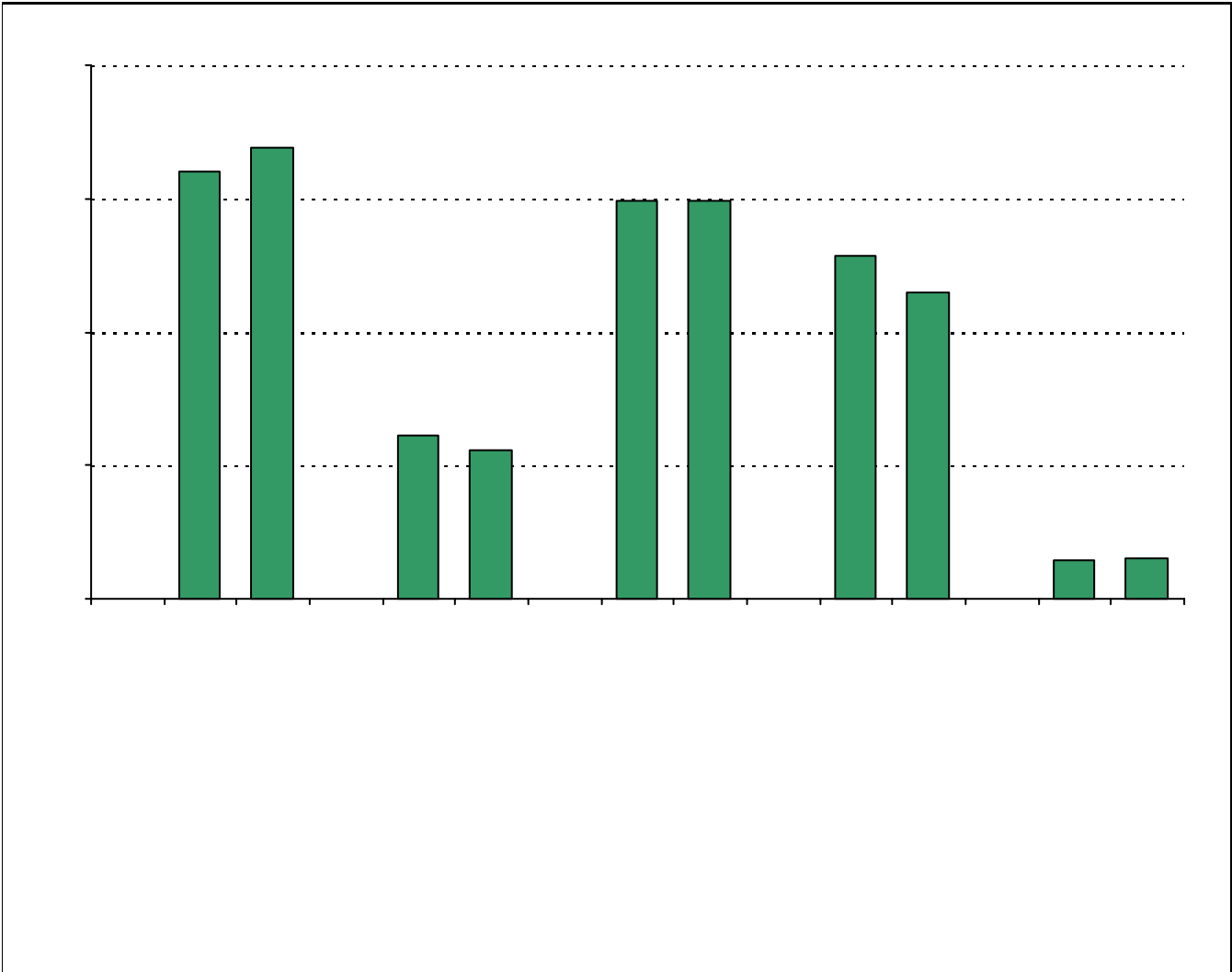
14. School staff provide me with enough information about the following programs:



**Required
curriculum**

...

* Item(s) #17, #18 #19 added to the survey in 2006



Item Response Details

		Strongly Agree	Agree	Disagree	Strongly Disagree	Don't Know/NA
3a.	n = 88	57	20	4	2	5
3b.	n = 80	45	22	5	1	7
3c.	n = 78	37	19	2	3	17
3d.	n = 84	52	25	4	1	2
3e.	n = 92	66	17	4	4	1

Number of Lucy Read Parent Responses, by Response Option
(Continued)

		Strongly Agree	Agree	Disagree	Strongly Disagree	Don't Know/NA
13a.	n = 87	56	25	3	2	1
13b.	n = 92	56	26	3	4	3
13c.	n = 84	44	23	5	7	5
14a.	n = 88	34	23	6	7	18
14b.	n = 93	49	28	2	4	10
14c.	n = 91	49	24	6	2	10
15a.	n = 90	61	20	3	1	5
15b.	n = 85	52	21	2	2	8
15c.	n = 82	28	16	7	2	29
15d.	n = 79	34	16	6	1	22
15e.	n = 85	58	21	2	2	2
16a.	n = 76	11	11	6	6	42
16b.	n = 71	8	12	6	5	40
16c.	n = 70	8	11	6	5	40
16d.	n = 72	10	11	6	6	39
16e.	n = 70	9	9	7	5	40
17.	n = 91	61	17	4	3	6
18.	n = 92	68	15	4	3	2
		Yes	No			
19a.	n = 80	64	16			
19b.	n = 84	69	15			
19c.	n = 73	42	31			
19d.	n = 75	43	32			
19e.	n = 75	48	27			
19f.	n = 77	38	33			
19g.	n = 77	60	17			
20.	n = 95	<p><i>Item 20 did not use the "Strongly Agree" to "Strongly Disagree" scale. Numbers below reflect the number of parents selecting each goal. These numbers will not sum to the total number of item respondents because parents may select multiple goals.</i></p>				
		High School diploma	Certificate/ Associates degree	Bachelors degree	Graduate/ Professional degree	Military service
		76	29	71	61	7