



2005-2006 AISD Parent Survey Results

Odom Elementary School

The following report contains the results of the 2005-2006 AISD Parent Survey for your campus and all AISD schools at your level. The first section of this report provides a comparison of the campus demographics and the demographics reported by parents who responded to the survey from your campus. The next section describes the percentages of parents selecting specific responses for each survey item, and the final section indicates the actual number of parents who selected each response option. Campus survey results should be examined for areas of strength and opportunities for improvement. Results for AISD schools at your level and results for your campus from 2004-2005 are presented to provide a

How many parents responded to the survey in 2004-2005 and 2005-2006, and how does this compare to the number of students in the population each year?

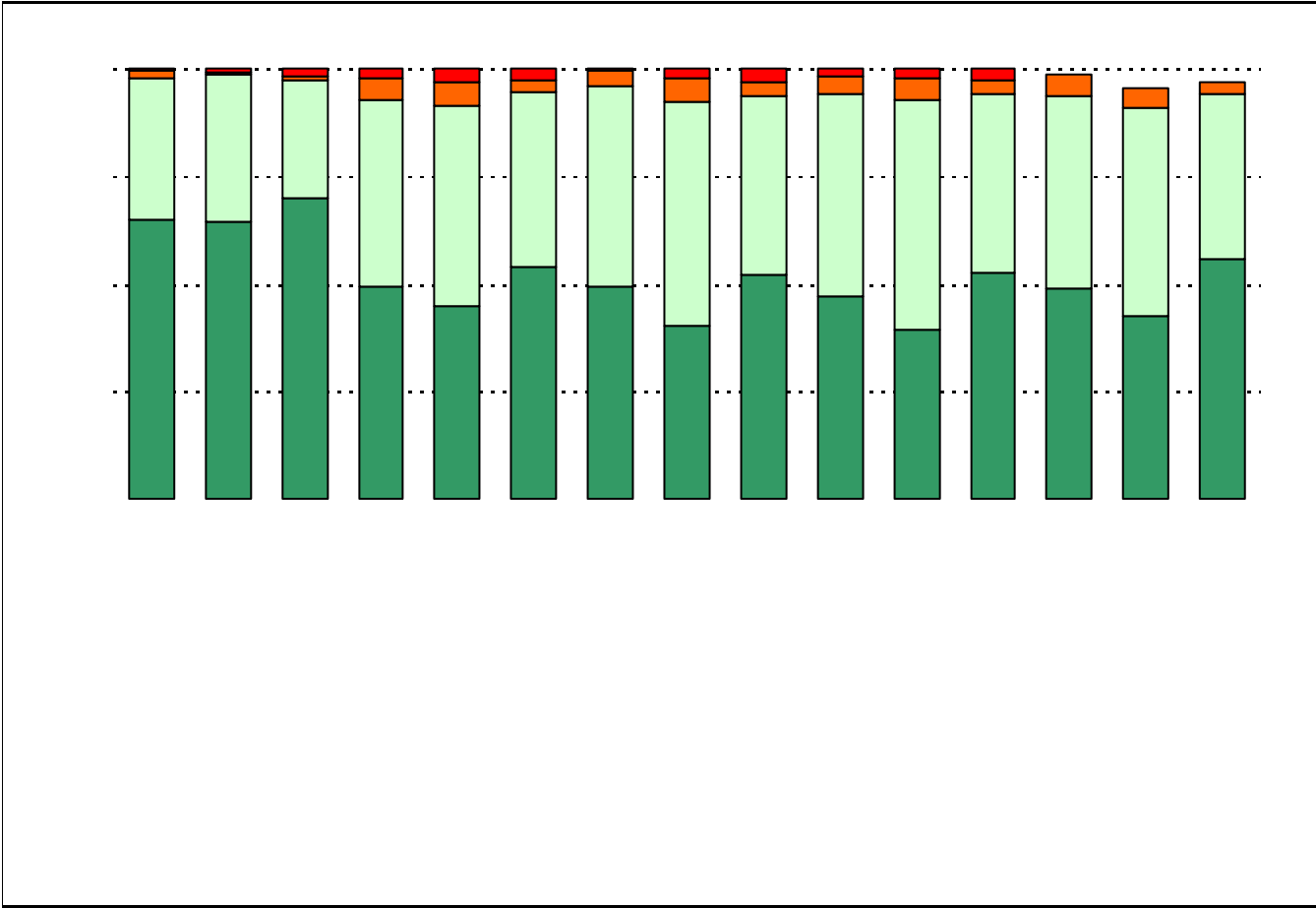
	Campus	District EL	District MS	District HS
	284			
	763			
	37.2%			
	300			
	756			
	39.7%			

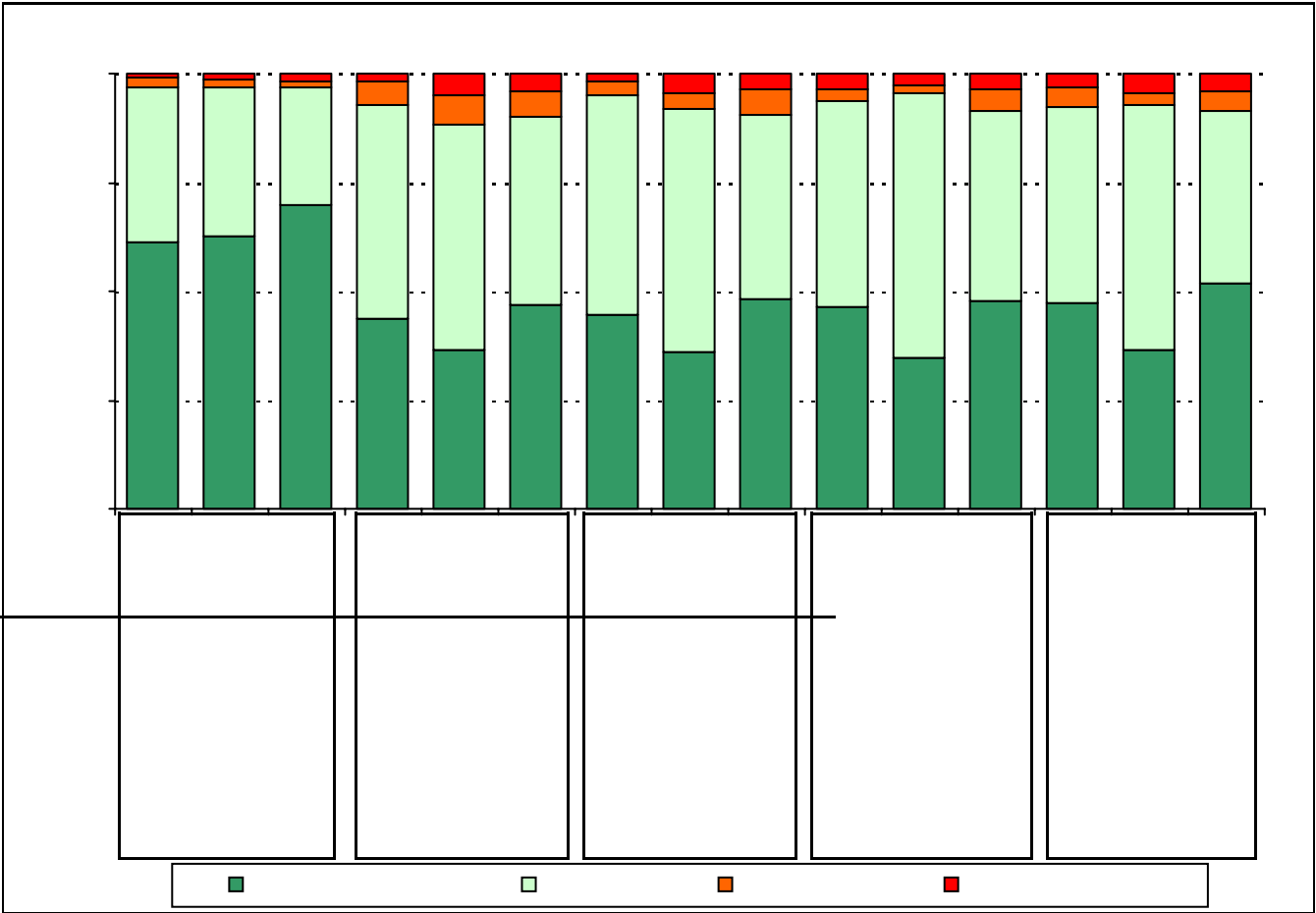
Note: The ratio of parent respondents to students is listed above as a percentage for ease of interpretation; however, it is the number of parents who responded per 100 students enrolled.

What did parents report as their child's ethnicity, and how does this compare to the ethnic distribution of the student population?

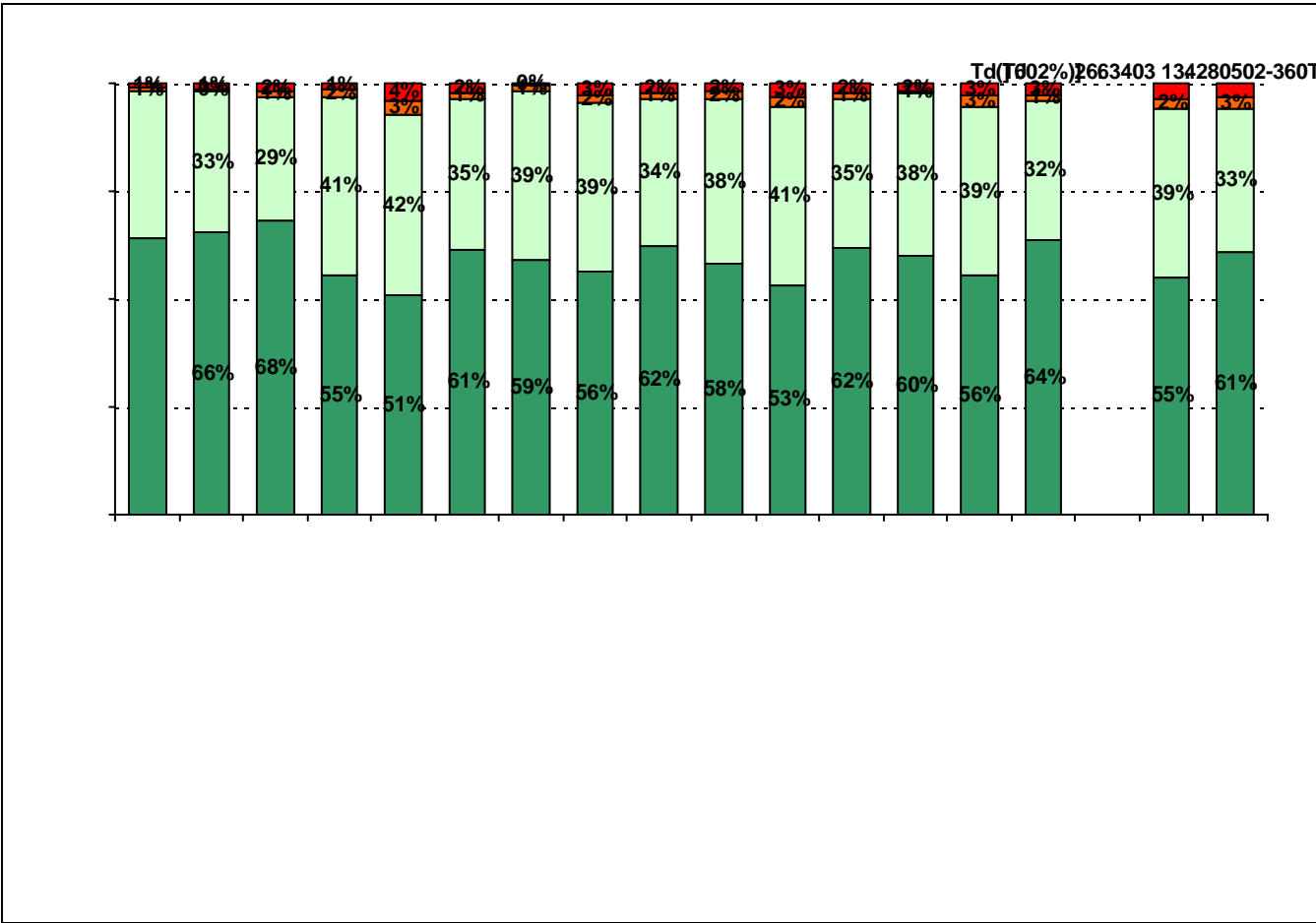
Ethnicity	% of Students, as Reported by Campus Parent Respondents	% of Students in Campus Population
	9.4%	
Asian	0.0%	0.3%
Hispanic	78.5%	77.2%
Native American	1.2%	0.0%
White	10.9%	12.8%

USING THE RESULTS OF THE

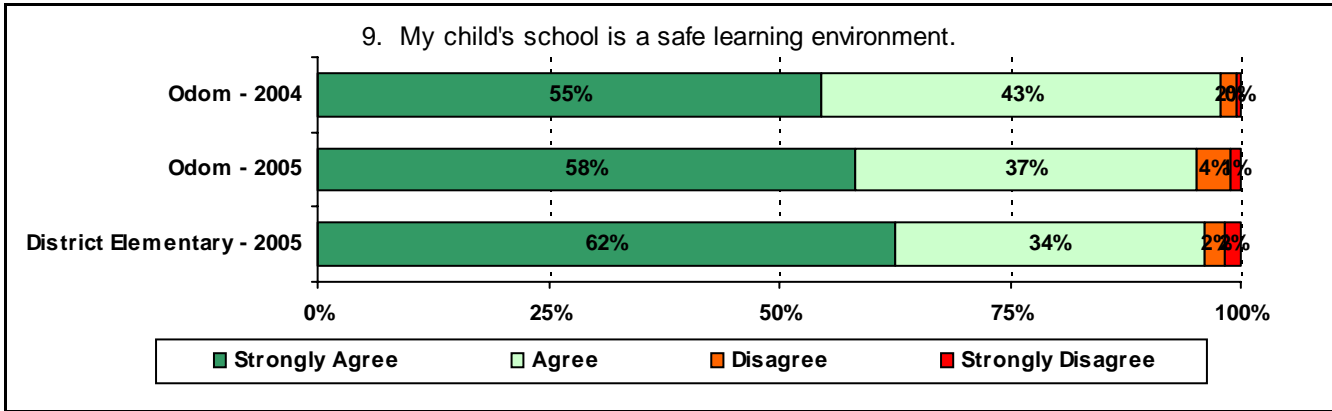




Four horizontal dotted lines for writing.

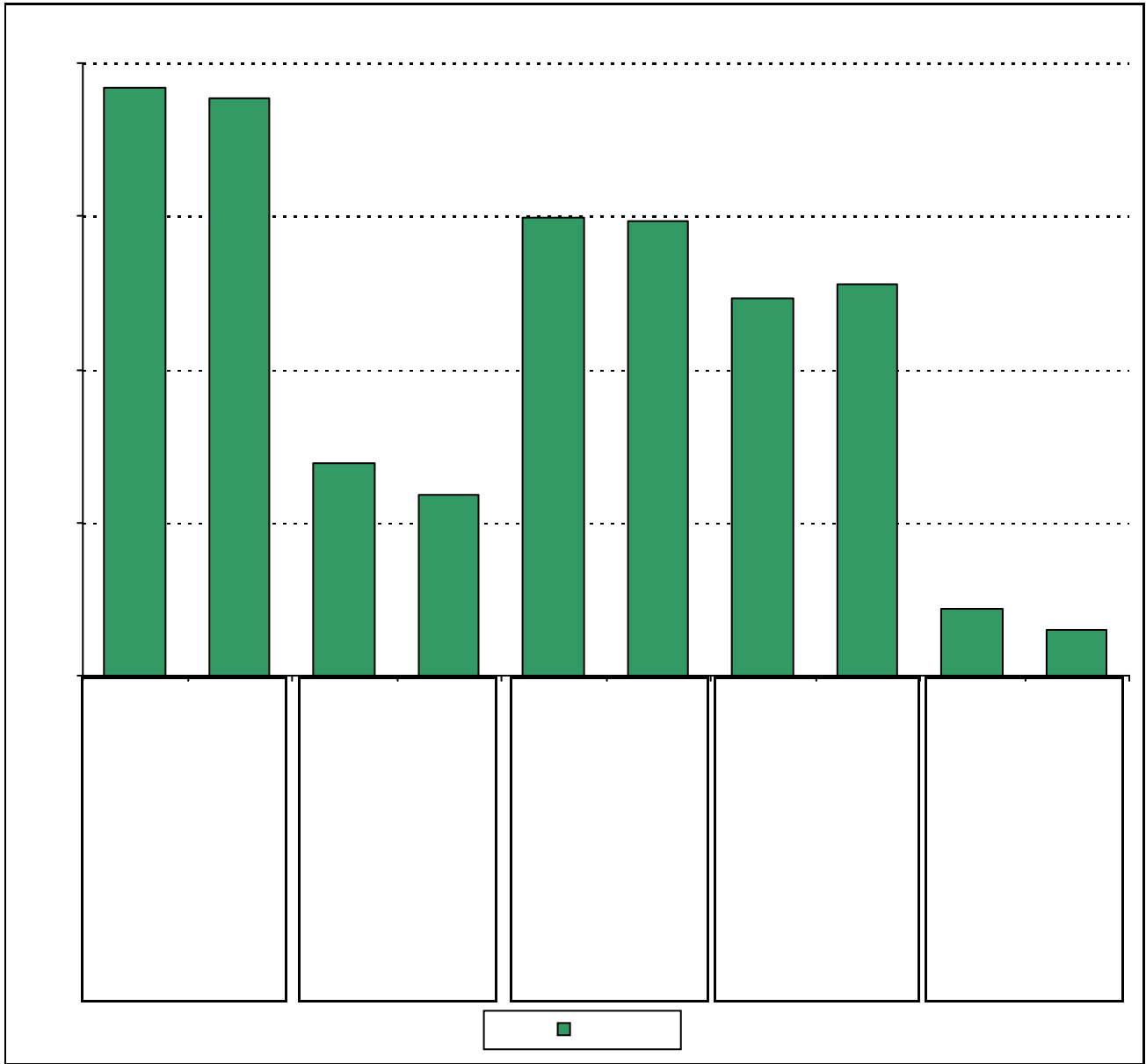


* The "Other" category was added to the survey in 2005.

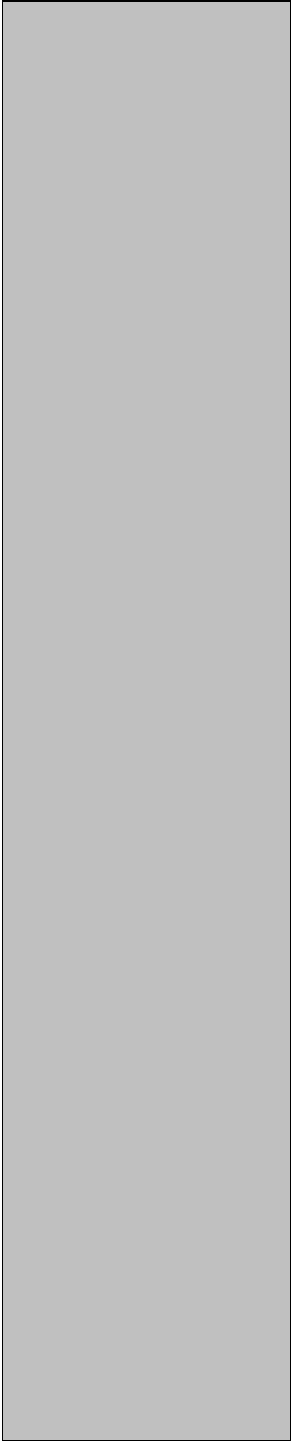


.....





	Strongly Agree	Agree	Disagree	Strongly Disagree	Don't Know/NA
--	-----------------------	--------------	-----------------	--------------------------	----------------------



124

Number of Odom Elementary School Parent Responses, by Response Option
(Continued)

		Strongly Agree	Agree	Disagree	Strongly Disagree	Don't Know/NA
11a.	n = 277	129	114	3	3	28
11b.	n = 275	133	119	5	6	12
11c.	n = 270	122	121	3	5	19
11d.	n = 270	128	115	3	4	20
11e.	n = 262	114	117	11	3	17
11f.	n = 273	136	113	5	5	14
11g.	n = 268	121	112	13	4	18
11h.	n = 261	110	105	14	7	25
11i.	n = 250	111	77	5	5	52
12a.	n = 270	98	79	16	5	72
12b.	n = 267	95	86	13	6	67
12c.	n = 270	96	96	22	10	46
12d.	n = 270	98	98	20	11	39
12e.	n = 278	118	127	6	7	20
12f.	n = 271	91	124	15	6	35
13a.	n = 279	164	98	2	1	14
13b.	n = 269	117	97	16	5	34
13c.	n = 263	116	91	11	5	40
13d.	n = 264	111	95	7	5	46
13e.	n = 273	144	108	2	2	17
14.	n = 277					
		High School diploma	Certificate/ Associates degree	Bachelors degree	Graduate/ Professional degree	Military service
		266	96	207	171	30