



2006-2007 AISD Parent Survey Results

Oak Hill Elementary School

The following report contains the results of the 2006-2007 AISD Parent Survey for your campus and all AISD schools at your level. The first section of this report provides a comparison of the campus demographics and the demographics reported by parents who responded to the survey from your campus. The next section describes the percentages of

How many parents responded to the survey in 2005-2006 and 2006-2007, and how does this compare to the number of students in the population each year?

	Campus	District EL	District MS	District HS
	183			
	834			
	<i>21.9%</i>			
	144			
	891			
	<i>16.2%</i>			

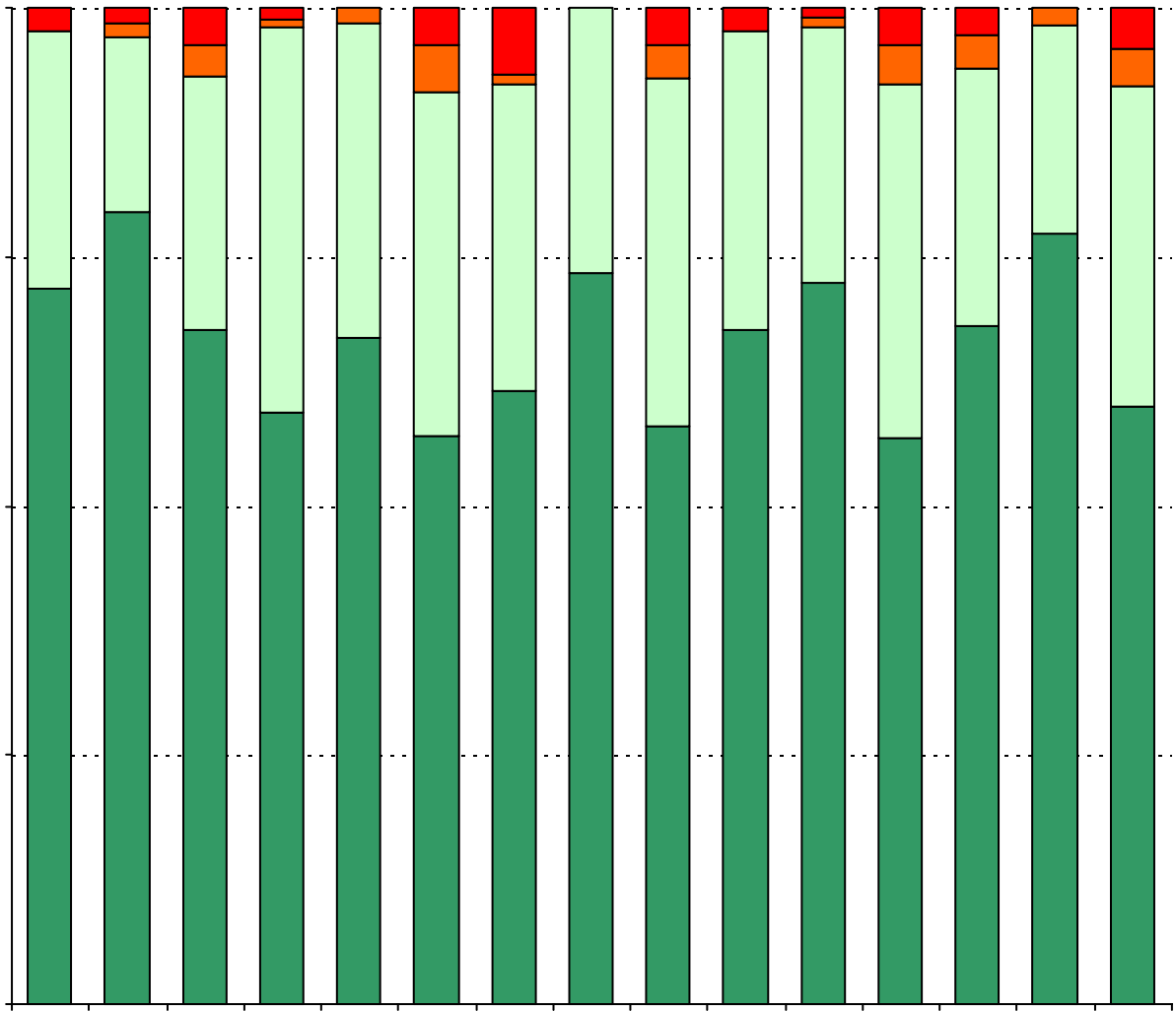
What did parents report as their child's ethnicity, and how does this compare to the ethnic distribution of the student population?

Ethnicity	% of Students, as Reported by Campus Parent Respondents	% of Students in Campus Population
	3.8%	
Asian	7.7%	4.3%
Hispanic	32.3%	32.0%
Native American	0.8%	0.2%
White	55.4%	60.3%

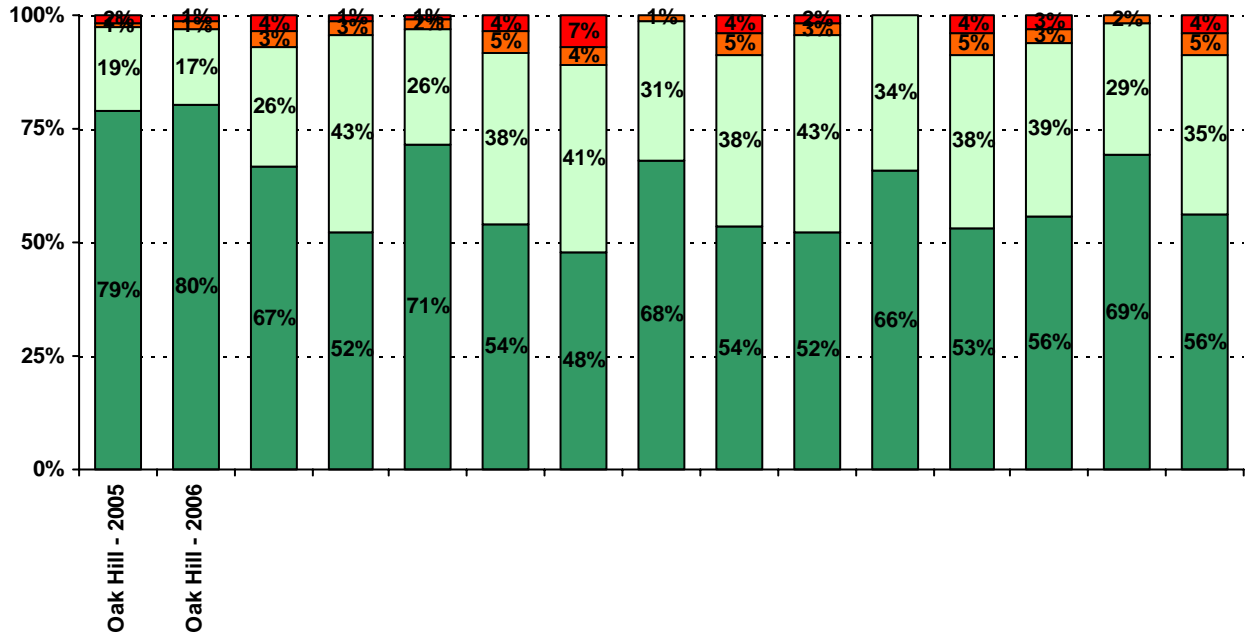
Grade	% of Students, as Reported by Campus Parent Respondents	% of Students in Campus Population
EC	2.9%	1.1%
PK	5.8%	4.3%
K	10.9%	16.7%
1st	22.5%	16.4%
2nd	5.8%	14.1%
3rd	24.6%	16.6%
4th	21.0%	15.6%

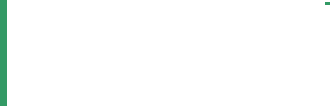
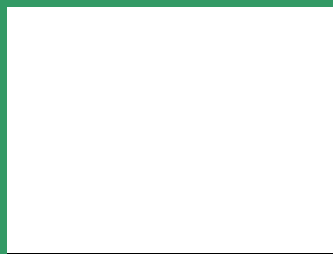
USING THE RESULTS OF THE AISD PARENT SURVEY

60% 25% 9% 1% 5% 2% 3% 2% 3% 1% 3% 2% 1%



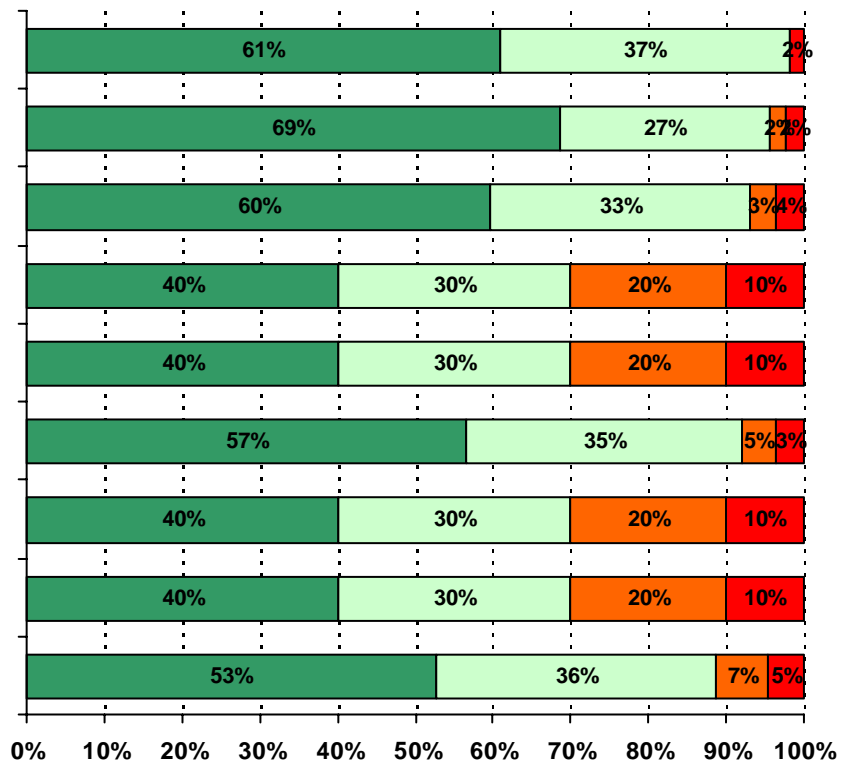
6. The following school staff provide me with opportunities for two-way communication.



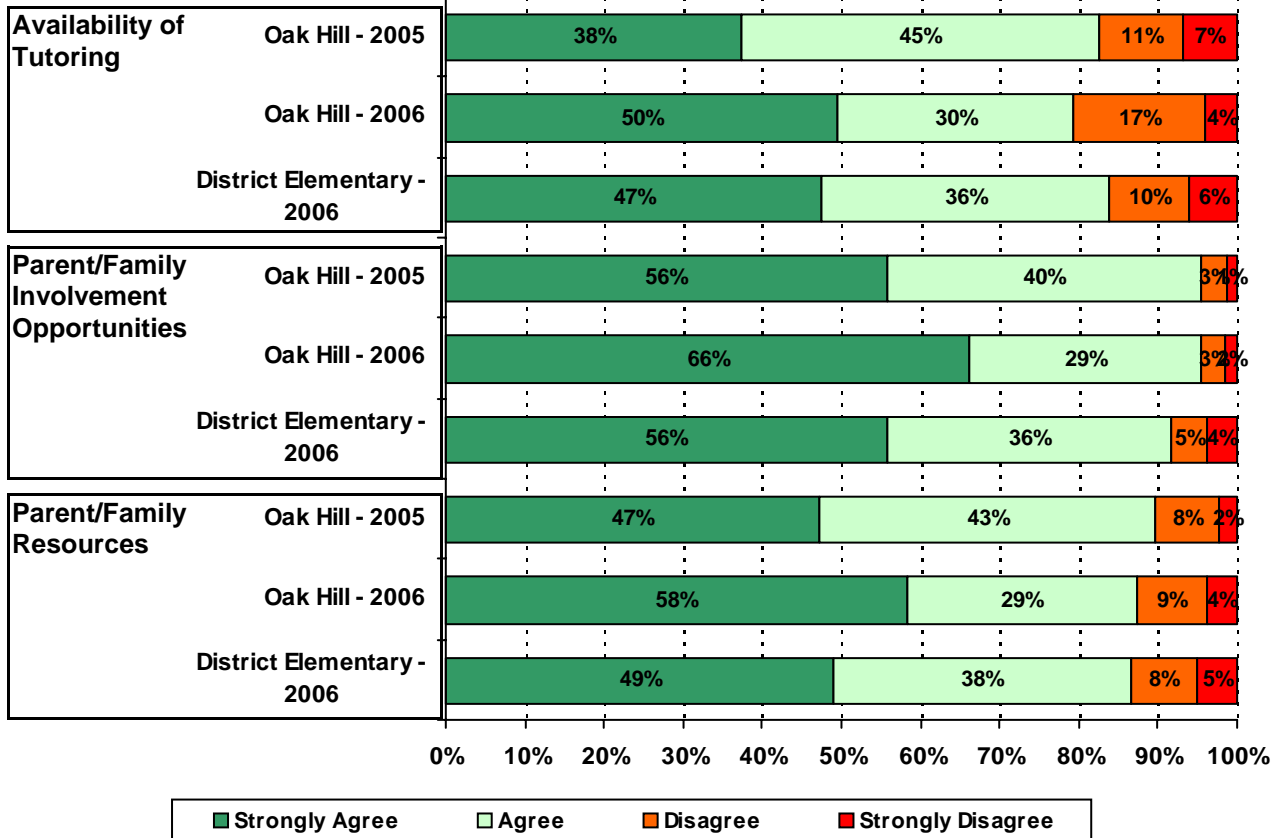


Four horizontal dotted lines spanning the width of the page, serving as a guide for text alignment or as a decorative element.

A large white rectangular area with a thin black border, occupying the lower right portion of the page. This area is likely intended for a main body of text or a large graphic.

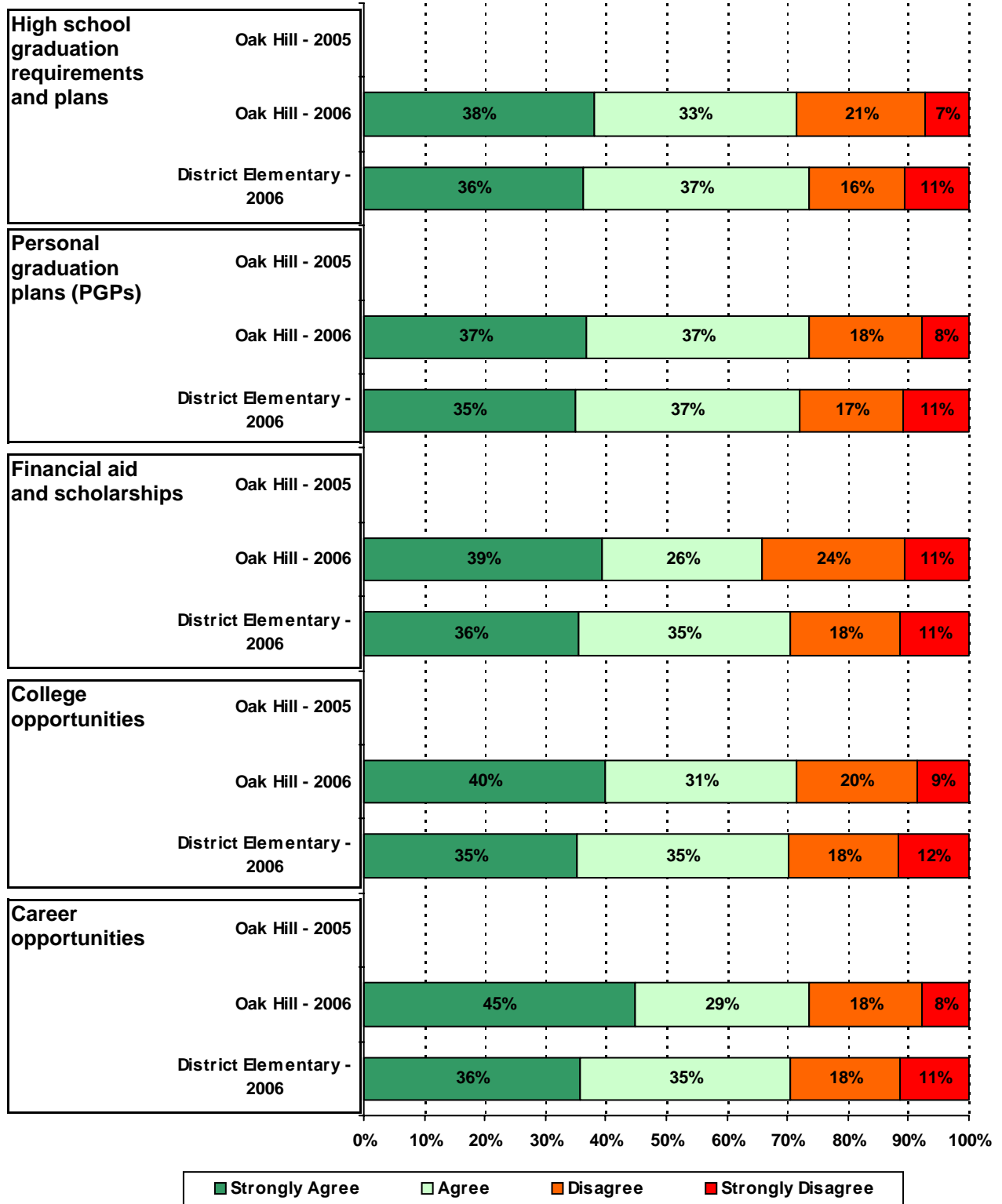


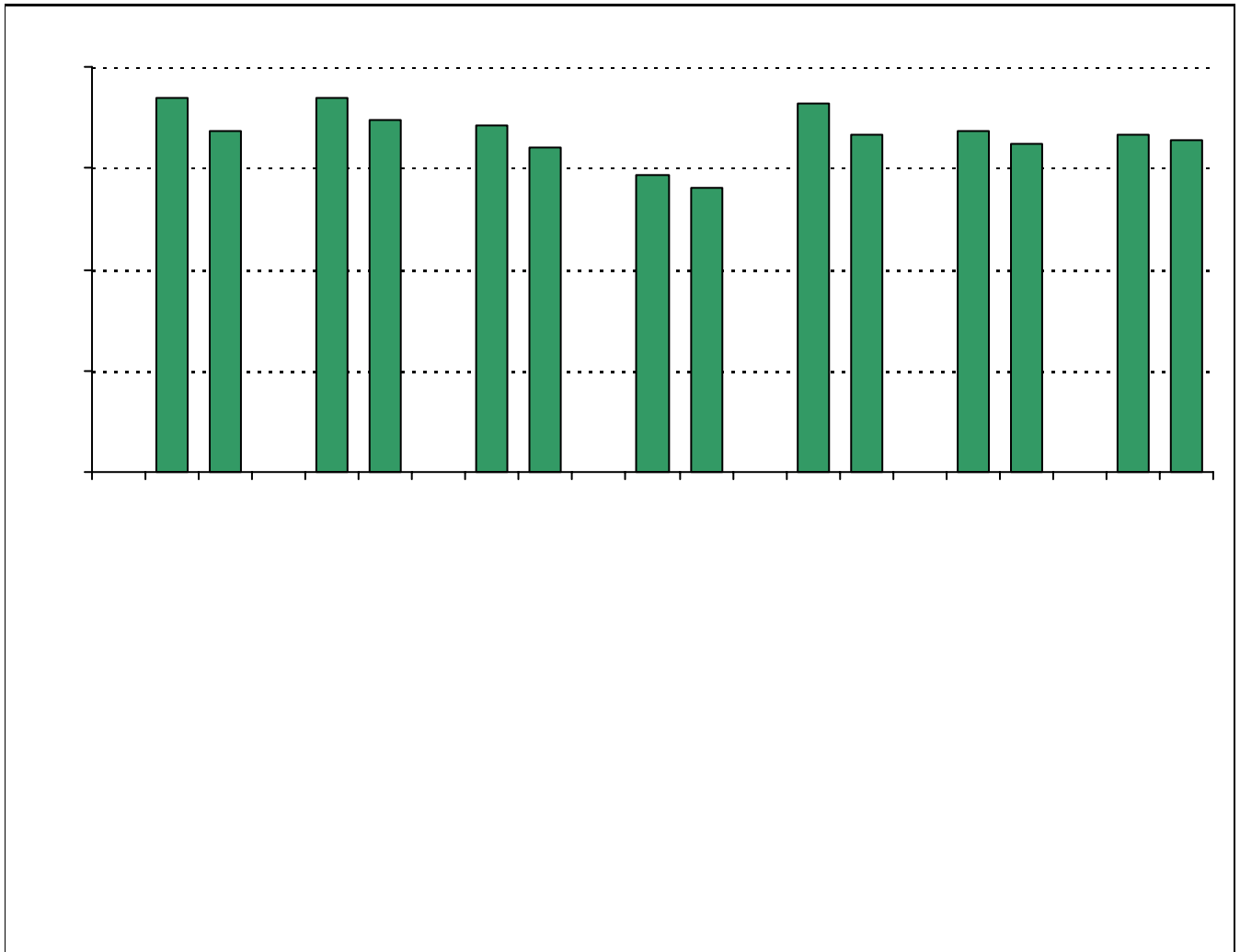
14. School staff provide me with enough information about the following programs:



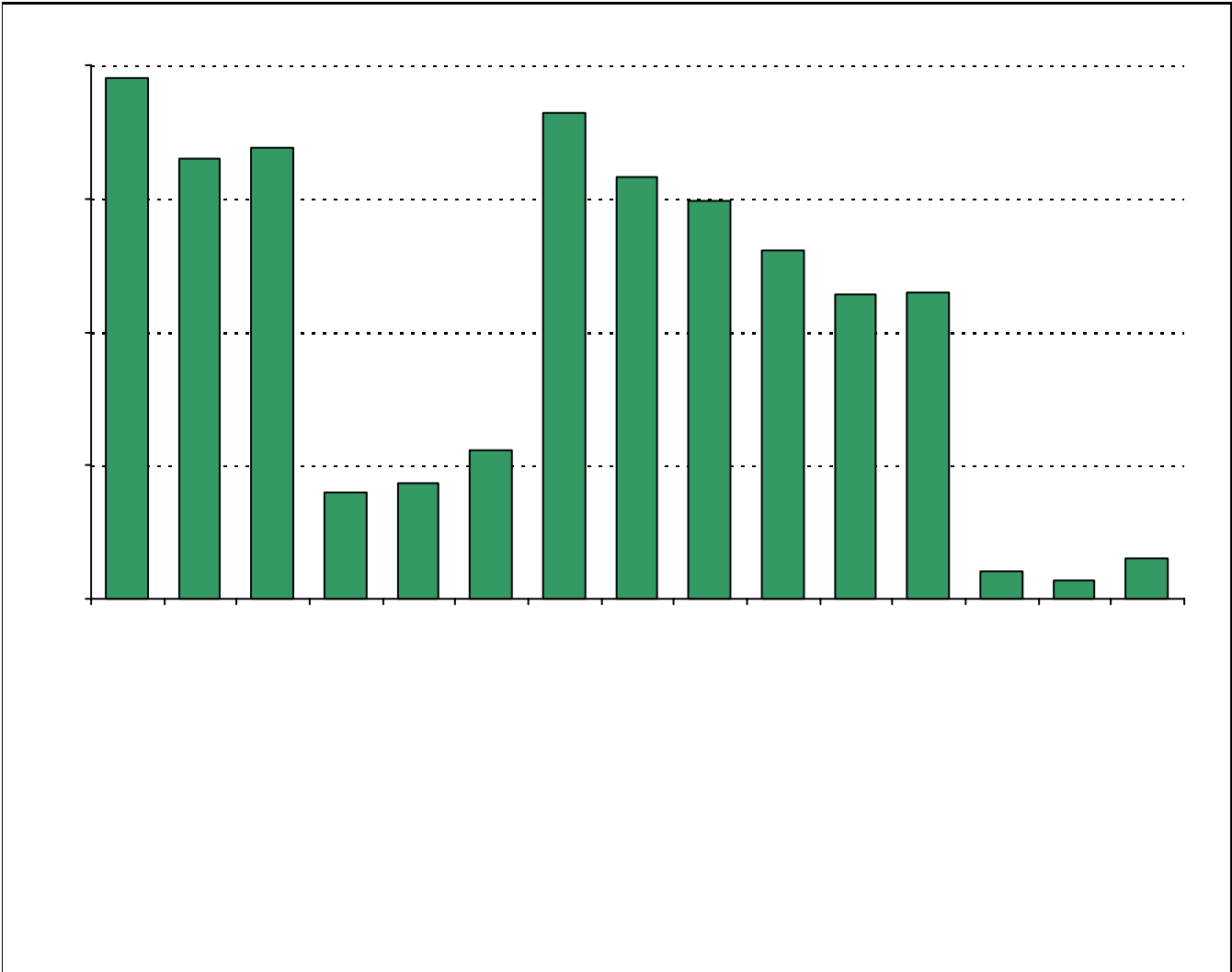
**Required
curriculum**

16. School staff provide me with useful information about the following graduation and post-graduation topic





* Item(s) #17, #18, #19 added to the survey in 2006



Item Response Details

Number of Oak Hill Elementary School Parent Responses, by Response Option

		Strongly Agree	Agree	Disagree	Strongly Disagree	Don't Know/NA
4.	n = 123		0	123		
5a.	n = 130	89	24	2	0	15
5b.	n = 128	76	27	1	1	23
5c.	n = 125	66	24	0	0	35
5d.	n = 128	81	38	2	0	7
5e.	n = 132	104	23	2	2	1
6a.	n = 128	72	30	2	0	24
6b.	n = 127	63	33	0	0	31
6c.	n = 126	55	25	1	0	45
6d.	n = 128	75	27	2	1	23
6e.	n = 139	111	23	2	2	1
7a.	n = 128	66	27	4	2	29
7b.	n = 128	59	27	3	1	38
7c.	n = 126	53	17	4	0	52
7d.	n = 124	63	22	7	1	31
7e.	n = 138	101	27	4	2	4
8a.	n = 128	62	29	4	0	33
8b.	n = 126	50	33	1	0	42
8c.	n = 125	53	22	2	0	48
8d.	n = 126	56	26	2	1	41
8e.	n = 135	99	23	6	1	6
9a.	n = 129	77	29	1	1	21
9b.	n = 129	72	27	2	2	26
9c.	n = 129	67	26	1	1	34
9d.	n = 129	81	29	1	1	17
9e.	n = 137	100	25	4	2	6
9f.	n = 132	71	38	4	1	18
10.	n = 139	35	22	10	4	68
11.	n = 136	90	33	8	1	4
12.	n = 135	94	31	2	4	4

Number of Oak Hill Elementary School Parent Responses, by Response Option
(Continued)

		Strongly Agree	Agree	Disagree	Strongly Disagree	Don't Know/NA
13a.	n = 138	92	36	3	3	4
13b.	n = 135	83	41	6	2	3
13c.	n = 135	80	36	13	2	4
14a.	n = 135	50	30	17	4	34
14b.	n = 137	86	38	4	2	7
14c.	n = 135	60	30	9	4	32
15a.	n = 135	93	31	7	3	1
15b.	n = 134	65	36	7	2	24
15c.	n = 132	64	42	7	2	17
15d.	n = 132	67	35	2	4	24
15e.	n = 135	94	34	5	1	1
16a.	n = 130	16	14	9	3	88
16b.	n = 128	14	14	7	3	90
16c.	n = 128	15	10	9	4	90
16d.	n = 126	14	11	7	3	91
16e.	n = 127	17	11	7	3	89
17.	n = 134	87	25	3	2	17
18.	n = 134	104	20	3	2	5
		Yes	No			
19a.	n = 127	108	19			
19b.	n = 133	118	15			
19c.	n = 126	96	30			
19d.	n = 123	76	47			
19e.	n = 126	103	23			
19f.	n = 125	89	37			
19g.	n = 125	94	31			
20.	n = 144	<i>Item 20 did not use the "Strongly Agree" to "Strongly Disagree" scale. Numbers below reflect the number of parents selecting each goal. These numbers will not sum to the total number of item respondents because parents may select multiple goals.</i>				
		High School diploma	Certificate/ Associates degree	Bachelors degree	Graduate/ Professional degree	Military service
		119	31	114	82	5