

2.2%

16.7%



2006-2007 AISD Parent Survey Results

0.1%

68.8%

65.7%

The following report contains the results of the 2006-2007 AISD Parent Survey for your campus and all AISD schools at your level. The first section of this report provides a comparison of the campus demographics and the demographics reported by parents who responded to the survey from your campus. The next section describes the percentages of

How many parents responded to the survey in 2005-2006 and 2006-2007, and how does this compare to the number of students in the population each year?

	Campus	District EL	District MS	District HS
	110			
	949			
	<i>11.6%</i>			
	158			
	897			
	<i>17.6%</i>			

What did parents report as their child's ethnicity, and how does this compare to the ethnic distribution of the student population?



What did parents report as their child's grade, and how does this compare to the grade level distribution of the student population?

Grade	% of Students, as Reported by Campus Parent Respondents	% of Students in Campus Population
EC	0.0%	1.9%
PK	4.0%	3.3%
K	13.2%	15.8%
1st	11.9%	19.3%
2nd	19.2%	16.3%
3rd	13.9%	14.2%
4th	19.9%	13.2%
5th	17.9%	16.1%
6th	N/A	N/A

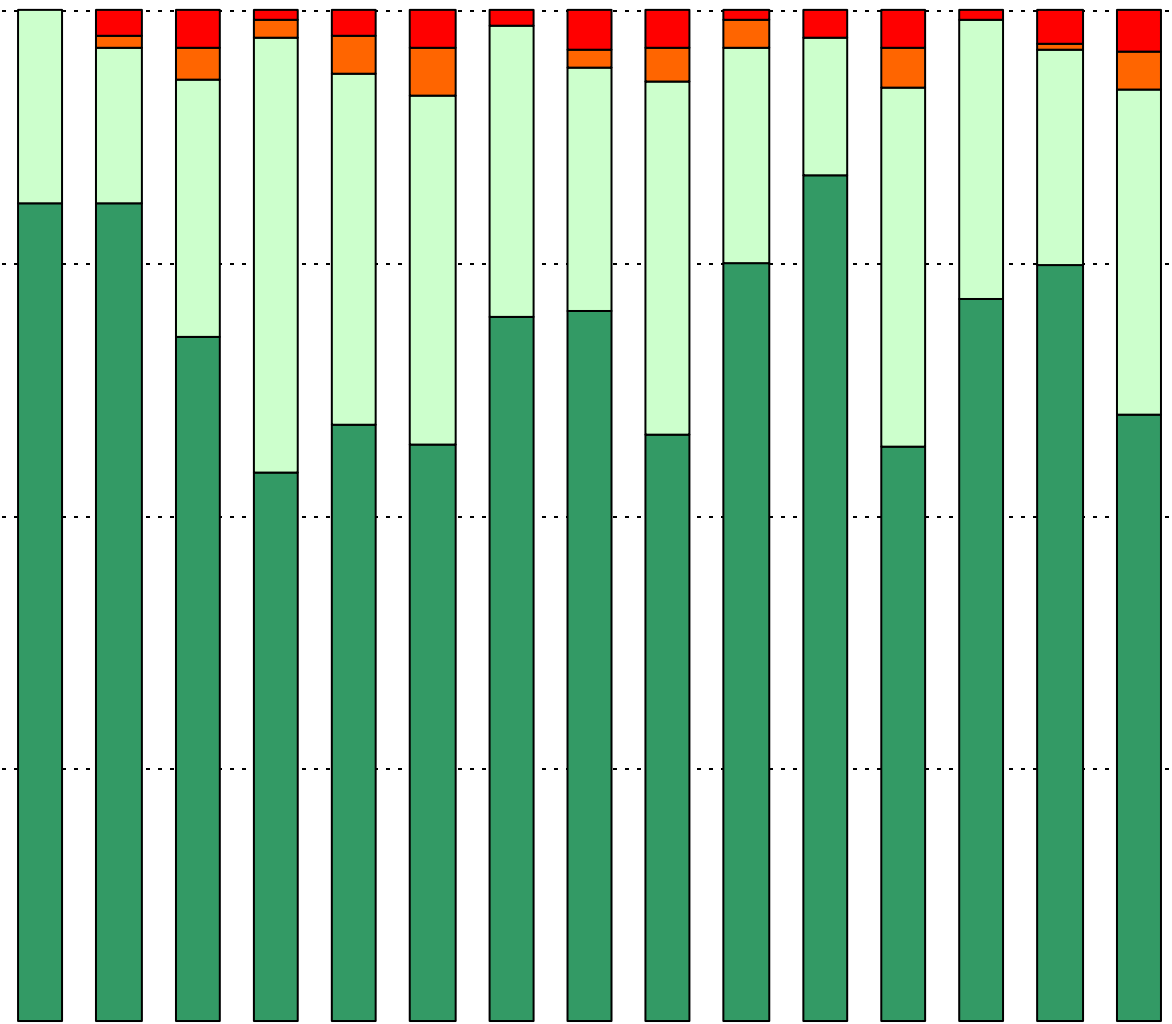
Note: Student population data are based on Fall PEIMS data submitted by the district to TEA, and may differ from the official AEIS report.

USING THE RESULTS OF THE AISD PARENT SURVEY

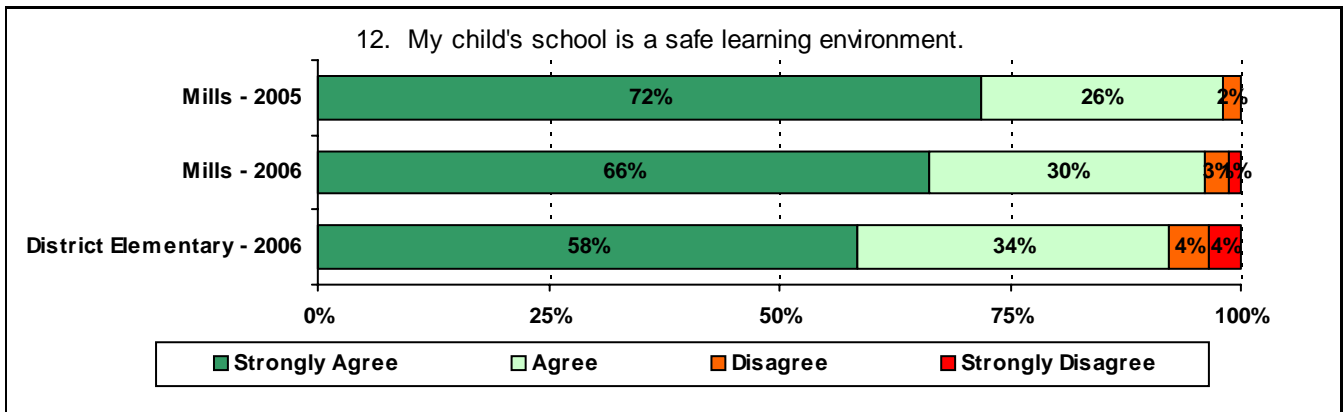
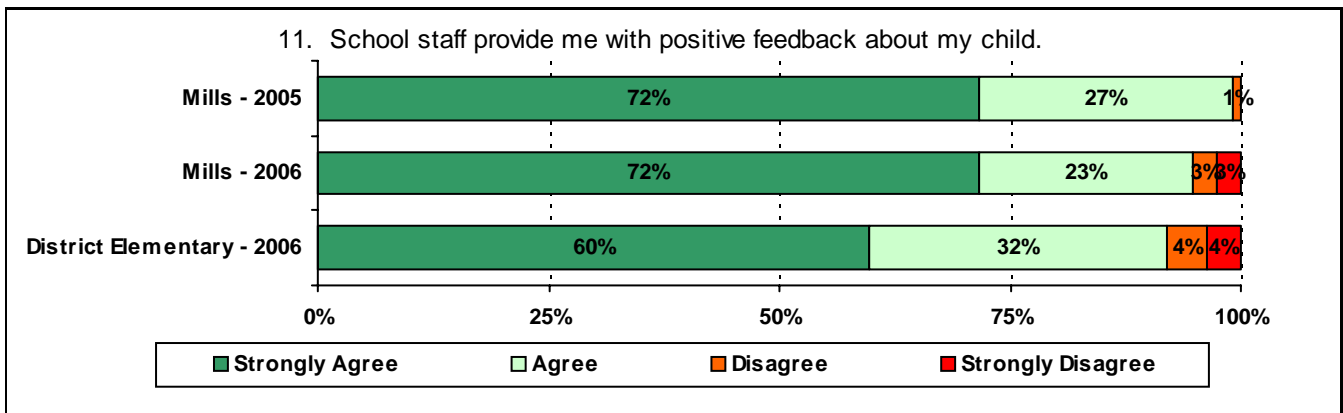
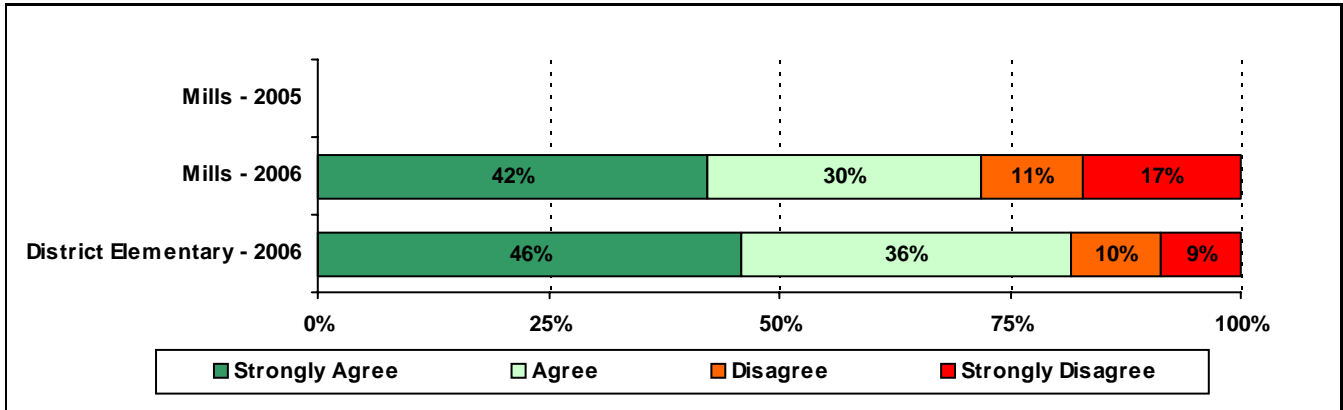
Each survey item is presented below, followed by a bar graph containing your school's results for two years and this year's results for all campuses at your level. You will be able to identify areas in which your school's results have changed over time, and you will be able to compare the responses of your school's parents to those of parents at your level district-wide.

Please examine your results to determine areas of strength and opportunities for improvement. Areas of strength can be identified by large percentages of parents who "Strongly Agree" or "Agree" with a statement. Opportunities for improvement can be identified by large percentages of parents who "Disagree" or "Strongly Disagree" with a statement. In addition, please look for patterns in which one staff category consistently receives more positive or negative responses than other staff categories. This will help you to identify opportunities for praise and areas in which training may be necessary. District responses for all schools at your level are also provided for comparison with 2006-2007 responses from your school. If your campus percentages are very different from the percentages reported by parents district-wide, please consider potential reasons for discrepancies.

Longitudinal data are provided, when available. It is important to look at the responses from year to year to determine whether there are any areas in which percentages have changed by more than a few points. Keep in mind that when response rates are low, the percentages may appear to fluctuate more without necessarily signaling a serious shift in perception. Also, think about any changes in campus policies and practices that may have resulted in positive or negative changes. How can campus staff continue to support the positive changes? How might your staff address any undesirable changes that may have occurred? Because parental perceptions of treatment by school personnel are based on interactions with a variety of school staff, representatives from all areas should be included in discussions regarding school planning and improvement processes.

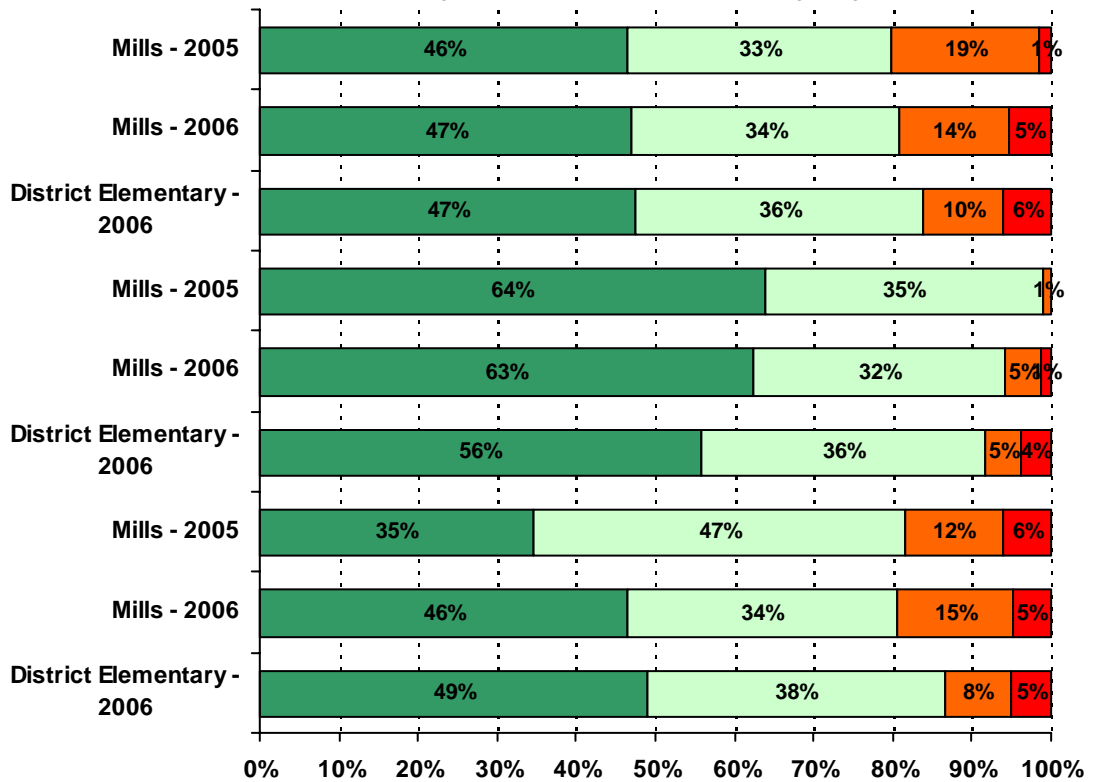


A rectangular box with a solid black border. Inside the box, there are four horizontal dotted lines, evenly spaced vertically, spanning most of the width of the box. These lines are intended for writing or drawing.



14. School staff provide me with enough information about the following programs:

Availability of Tutoring

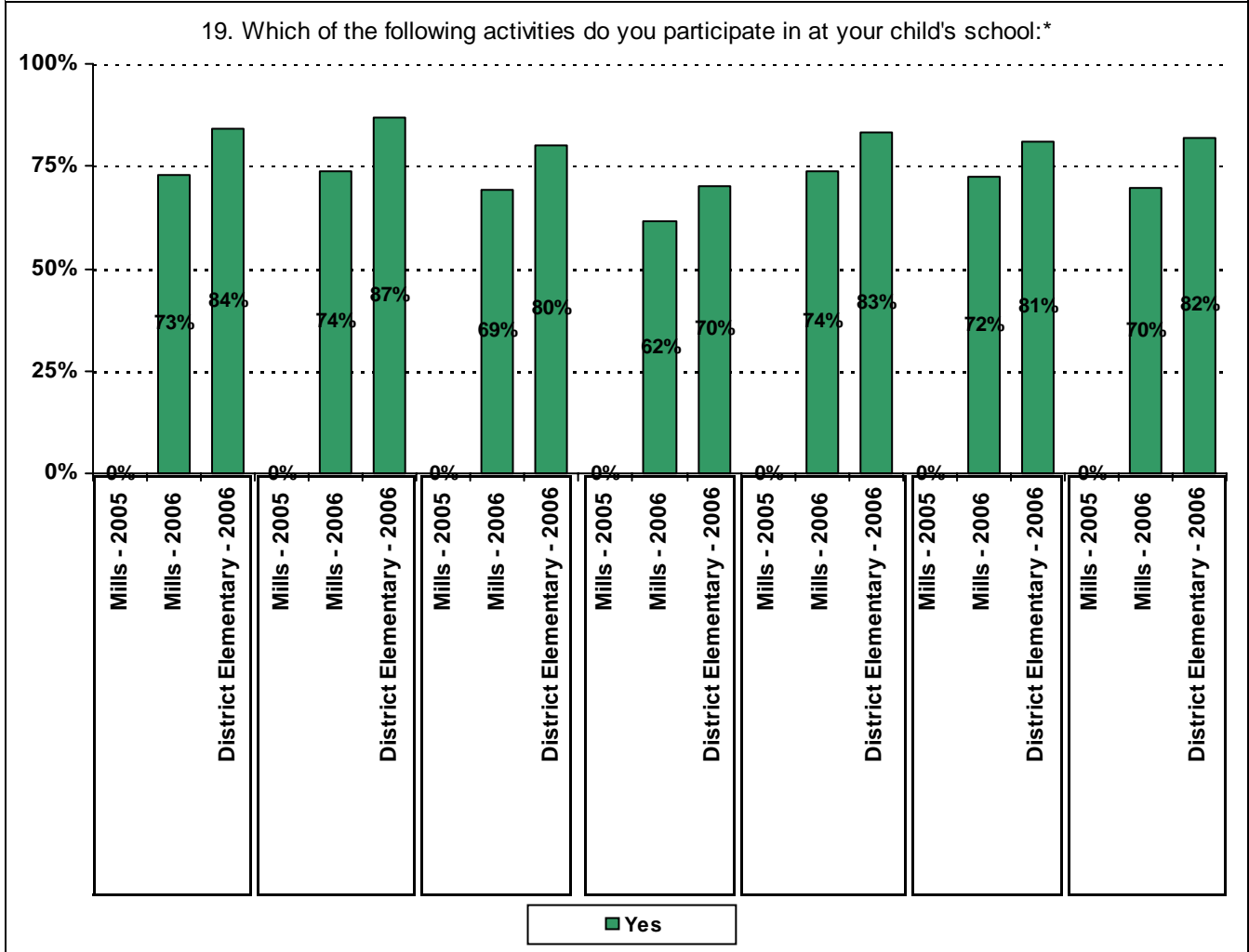
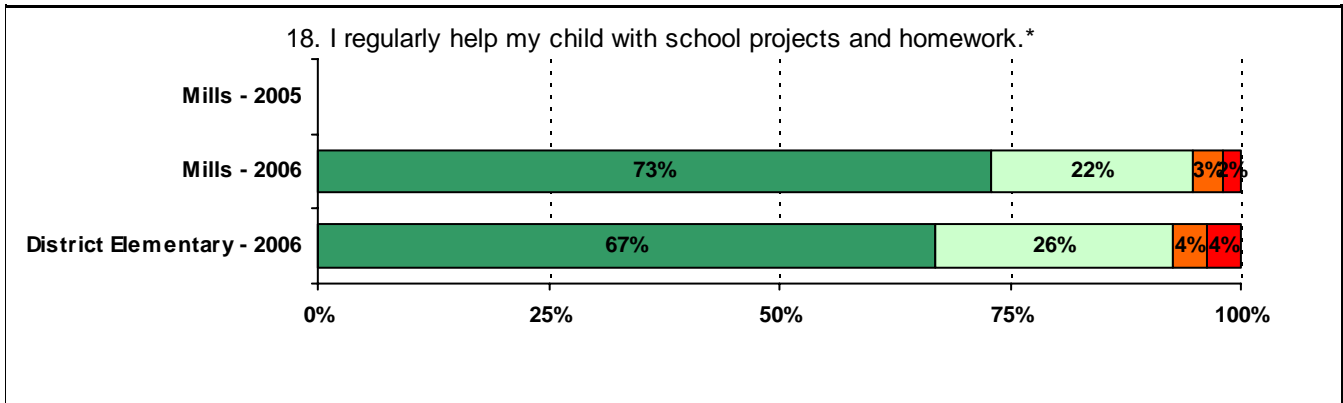
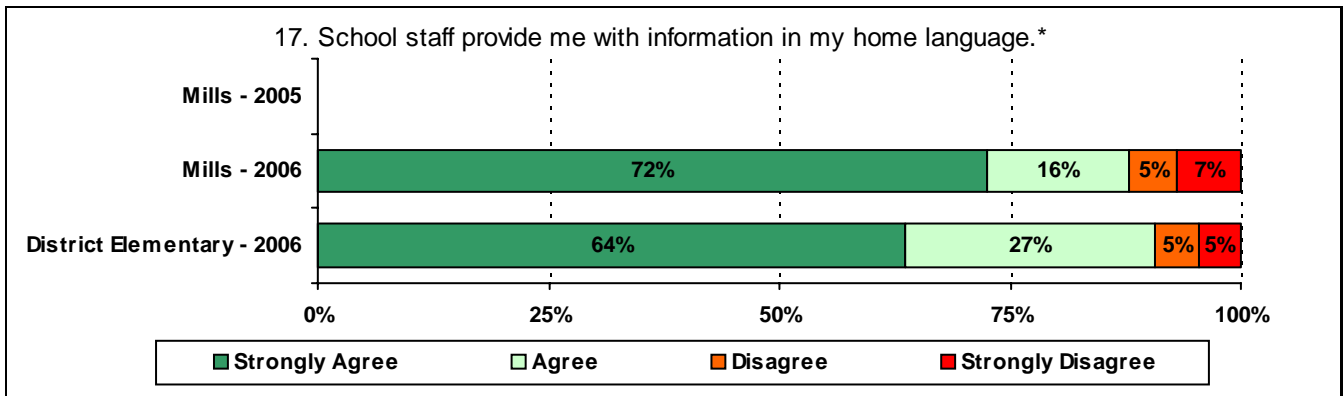


■ Strongly Agree
 ■ Agree
 ■ Disagree
 ■ Strongly Disagree

**Required
curriculum**

A large rectangular box containing ten vertical dotted lines, intended for handwriting practice.





* Item(s) #17, #18, #19 added to the survey in 2006

		Strongly Agree	Agree	Disagree	Strongly Disagree	Don't Know/NA
3a.	n = 157	112	32	1	5	7
3b.	n = 157	122	20	0	4	11

