



## 2005-2006 AISD Parent Survey Results

### Mills Elementary School

The following report contains the results of the 2005-2006 AISD Parent Survey for your campus and all AISD schools at your level. The first section of this report provides a comparison of the campus demographics and the demographics reported by parents who responded to the survey from your campus. The next section describes the percentages of parents selecting specific responses for each survey item, and the final section indicates the actual number of parents who selected each response option. Campus survey results should be examined for areas of strength and opportunities for improvement. Results for all AISD schools at your level and results for your campus from 2004-2005 are presented to provide a reference for comparison.

#### How many parents responded to the survey in 2004-2005 and 2005-2006, and how does this compare to the number of students in the population each year?

	Campus	District EL	District MS	District HS
<b># of Parents Responding in 2004-2005</b>	201	12,137	2,007	2,700
<b># of Students in 2004-2005</b>	912	43,566	15,705	19,976
<b>Ratio of Parent Respondents to Students, 2004-2005</b>	<b>22%</b>	<b>27.8%</b>	<b>12.8%</b>	<b>13.5%</b>
<b># of Parents Responding in 2005-2006</b>	110	10,900	1,801	2,085
<b># of Students in 2005-2006</b>	949	44,827	15,624	20,081
<b>Ratio of Parent Respondents to Students, 2005-2006</b>	<b>11.6%</b>	<b>24.3%</b>	<b>11.5%</b>	<b>10.4%</b>

Note: The ratio of parent respondents to students is listed above as a percentage for ease of interpretation; however, it is the number of parents who responded per 100 students enrolled.

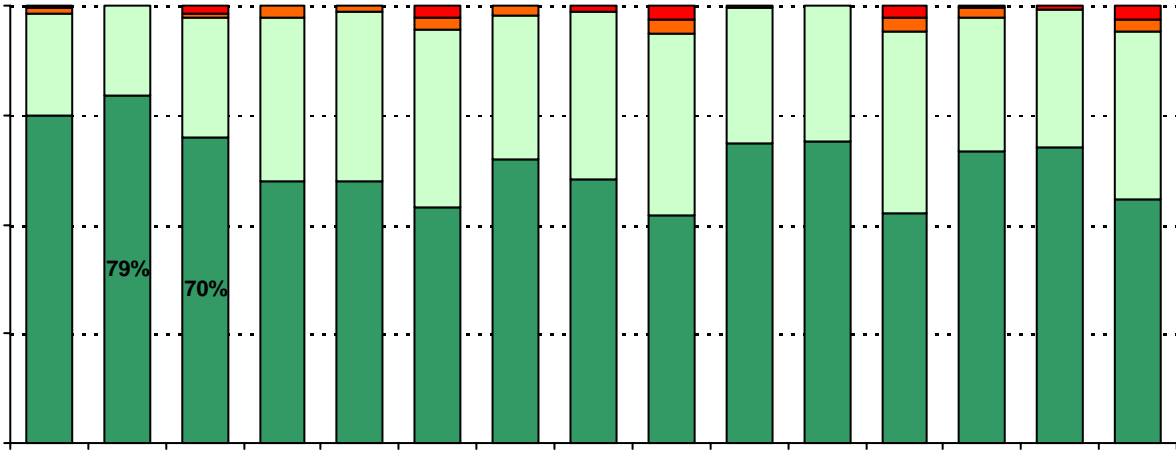
#### What did parents report as their child's ethnicity, and how does this compare to the ethnic distribution of the student population?

Ethnicity	% of Students, as Reported by Campus Parent Respondents	% of Students in Campus Population
African American	3.2%	2.8%
Asian	15.1%	9.9%
Hispanic	23.7%	16.5%
Native American	1.1%	0.2%
White	57.0%	70.5%



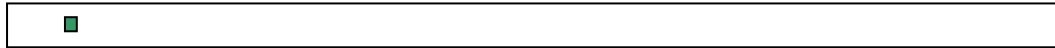
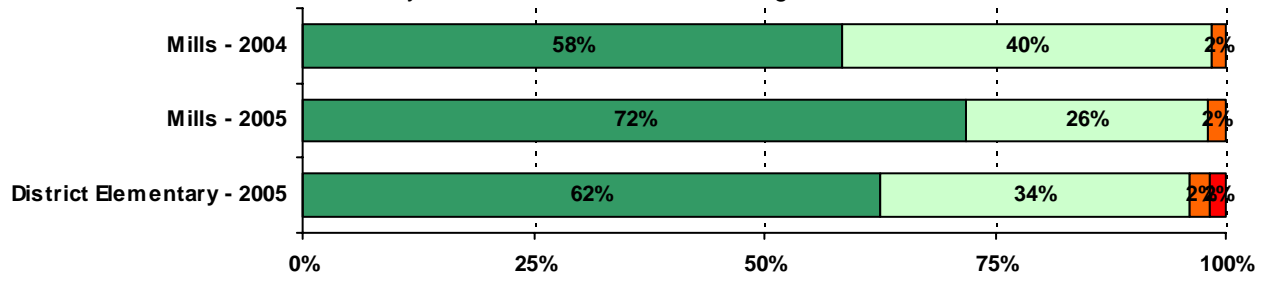
**USING THE RESULTS OF THE AISD PARENT SURVEY**

5. The following school staff provide me with opportunities for two-way communication.





9. My child's school is a safe learning environment.

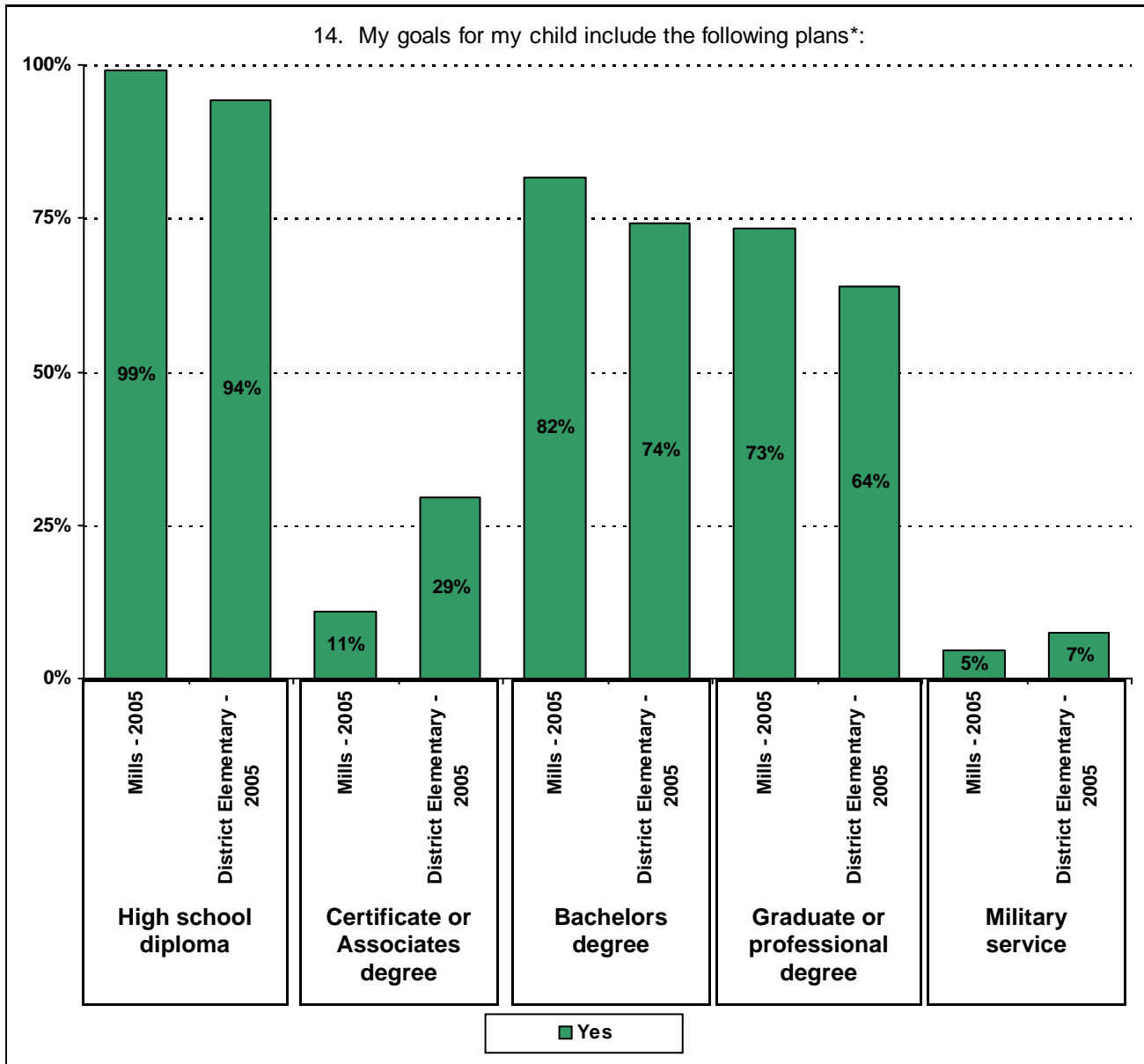


.....



**Required**





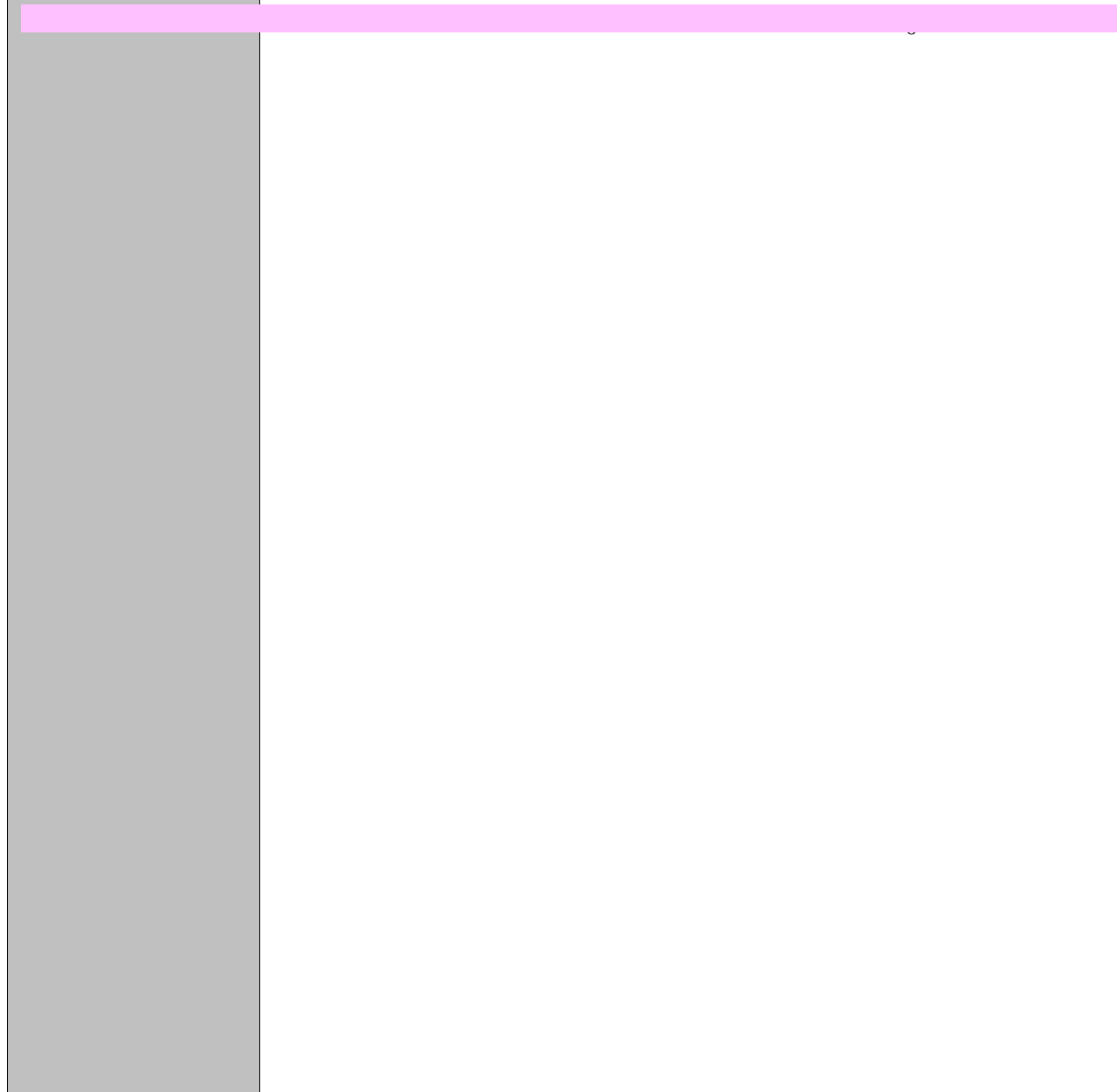
\* Item 14 was added to the survey in 2005. Respondents who selected Certificate, Associates, Bachelors, or Graduate degree were included in the "Yes" percentage for High School diploma, even if they did not select the High School diploma option. Respondents who selected Graduate degree were included in the "Yes" percentage for Bachelors degree, even if they did not select the Bachelors degree option.

## Item Response Details

Number of Mills Elementary School Parent Responses, by 5599.4(45)-4675.8(2)-5407.8(1)§5

Data407.8(

		Strongly Agree	Agree	Disagree	Strongly Disagree	Don't Know/NA
3a.	n = 108	75	29	0	1	3
3b.	n = 107	78	22	3	1	3
3c.	n = 105	46	19	0	1	39
3d.	n = 106	57	45	2	1	1



Number of Mills Elementary School Parent Responses, by Response Option  
(Continued)

		Strongly Agree	Agree	Disagree	Strongly Disagree	Don't Know/NA
<b>11a.</b>	<b>n = 107</b>	51	32	1	0	23
<b>11b.</b>	<b>n = 107</b>	64	38	2	0	3
<b>11c.</b>	<b>n = 107</b>	60	39	2	1	5
<b>11d.</b>	<b>n = 108</b>	57	47	2	0	2
<b>11e.</b>	<b>n = 107</b>	59	39	6	0	3
<b>11f.</b>	<b>n = 106</b>	66	37	2	0	1
<b>11g.</b>	<b>n = 108</b>	68	33	5	0	2
<b>11h.</b>	<b>n = 107</b>	56	33	8	0	10
<b>11i.</b>	<b>n = 106</b>	41	23	5	0	37
<b>12a.</b>	<b>n = 108</b>	28	17	6	1	56
<b>12b.</b>	<b>n = 107</b>	23	20	2	1	61
<b>12c.</b>	<b>n = 109</b>	44	39	4	0	22
<b>12d.</b>	<b>n = 108</b>	32	23	13	1	39
<b>12e.</b>	<b>n = 109</b>	69	38	1	0	1
<b>12f.</b>	<b>n = 107</b>	28	38	10	5	26
<b>13a.</b>	<b>n = 108</b>	81	26	1	0	0
<b>13b.</b>	<b>n = 107</b>	59	18	7	0	23
<b>13c.</b>	<b>n = 109</b>	43	19	8	0	39
<b>13d.</b>	<b>n = 106</b>	31	19	3	0	53
<b>13e.</b>	<b>n = 108</b>	77	28	2	0	1
<b>14.</b>	<b>n = 109</b>	<i>Item 14 did not use the "Strongly Agree" to "Strongly Disagree" scale. Numbers below reflect the number of parents selecting each goal. These numbers will not sum to the total number of item respondents because parents may select multiple goals.</i>				
		<b>High School diploma</b>	<b>Certificate/ Associates degree</b>	<b>Bachelors degree</b>	<b>Graduate/ Professional degree</b>	<b>Military service</b>
		108	12	89	80	5