

**How many parents responded to the survey in 2004-2005 and 2005-2006, and how does this compare to the number of students in the population each year?**

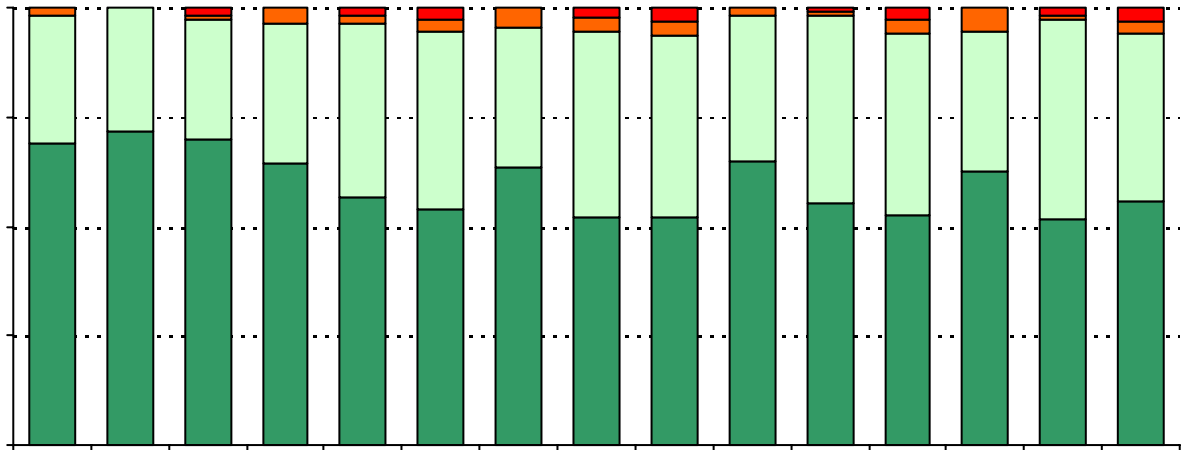
	<b>Campus</b>	<b>District EL</b>	<b>District MS</b>	<b>District HS</b>

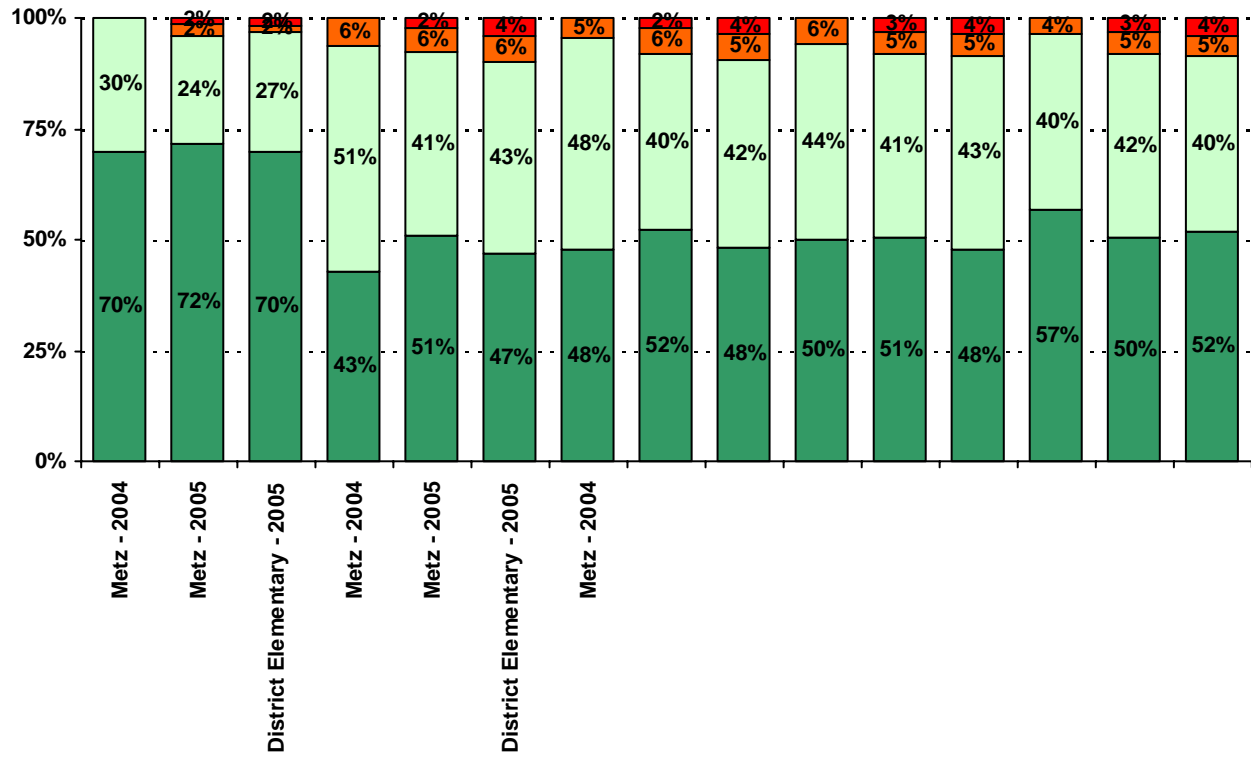
	<b>% of Students, as Reported by Campus Parent Respondents</b>	<b>% of Students in Campus Population</b>
<b>Asian</b>		
<b>Hispanic</b>		
<b>Native American</b>		
<b>White</b>		

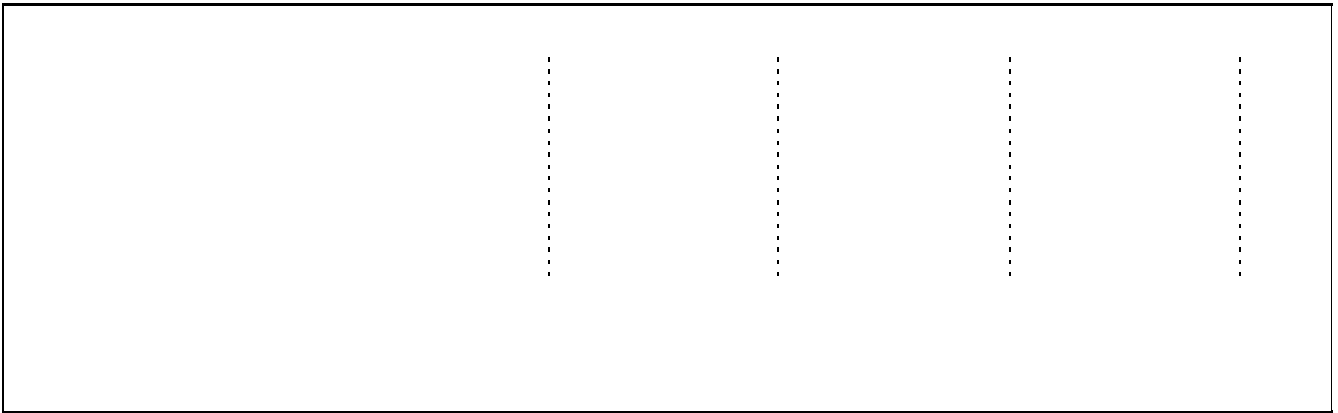
Grade	% of Students, as Reported by Campus Parent Respondents	% of Students in Campus Population
EC		
PK		
K		
1st		
2nd		
3rd		
4th		

**USING THE RESULTS OF THE AISD PARENT SURVEY**

7270645754649583288236026255075100%





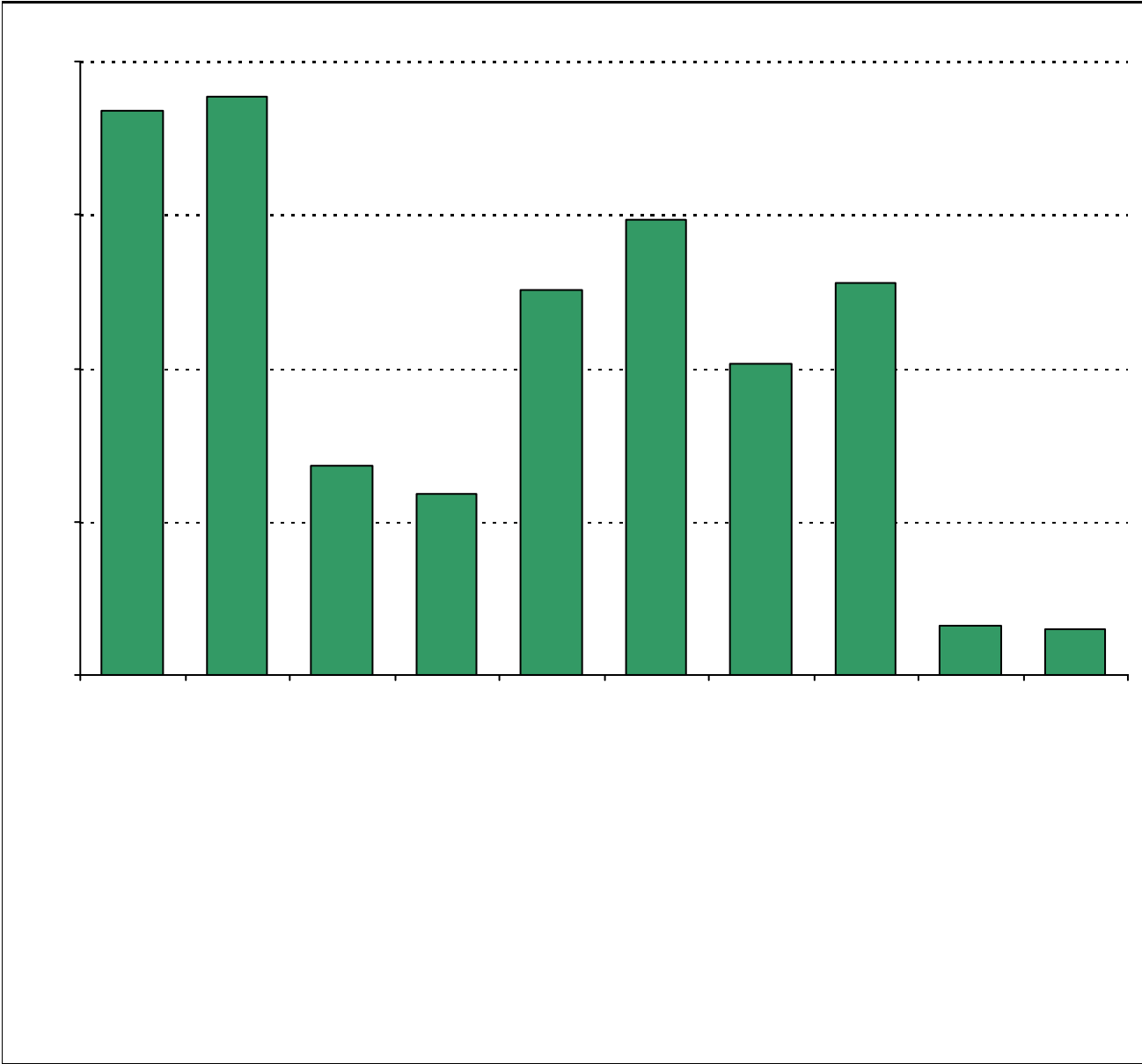


**Required  
curriculum**



**Required**





	Strongly Agree	Agree	Disagree	Strongly Disagree	Don't Know/NA
3a. n = 128 [REDACTED]					
3e. e n=7127 [REDACTED] [REDACTED]					

		Strongly Agree	Agree	Disagree	Strongly Disagree	Don't Know/NA
11a.	n = 124					
11b.	n = 125					
11c.	n = 124					
11d.	n = 119					
11e.	n = 116					
11f.	n = 123					
11g.	n = 121					
11h.	n = 123					
11i.	n = 113					
12a.	n = 116					
12b.	n = 115					
12c.	n = 114					
12d.	n = 116					
12e.	n = 121					
12f.	n = 118					
13a.	n = 123					
13b.	n = 121					
13c.	n = 121					
13d.	n = 123					
13e.	n = 119					
14.	n = 126	<i>Item 14 did not use the "Strongly Agree" to "Strongly Disagree" scale. Numbers below reflect</i>				