

How many parents responded to the survey in 2004-2005 and 2005-2006, and how does this compare to the number of students in the population each year?

	District MS	District HS

What did parents report as their child's grade, and how does this compare to the grade level distribution of the student population?

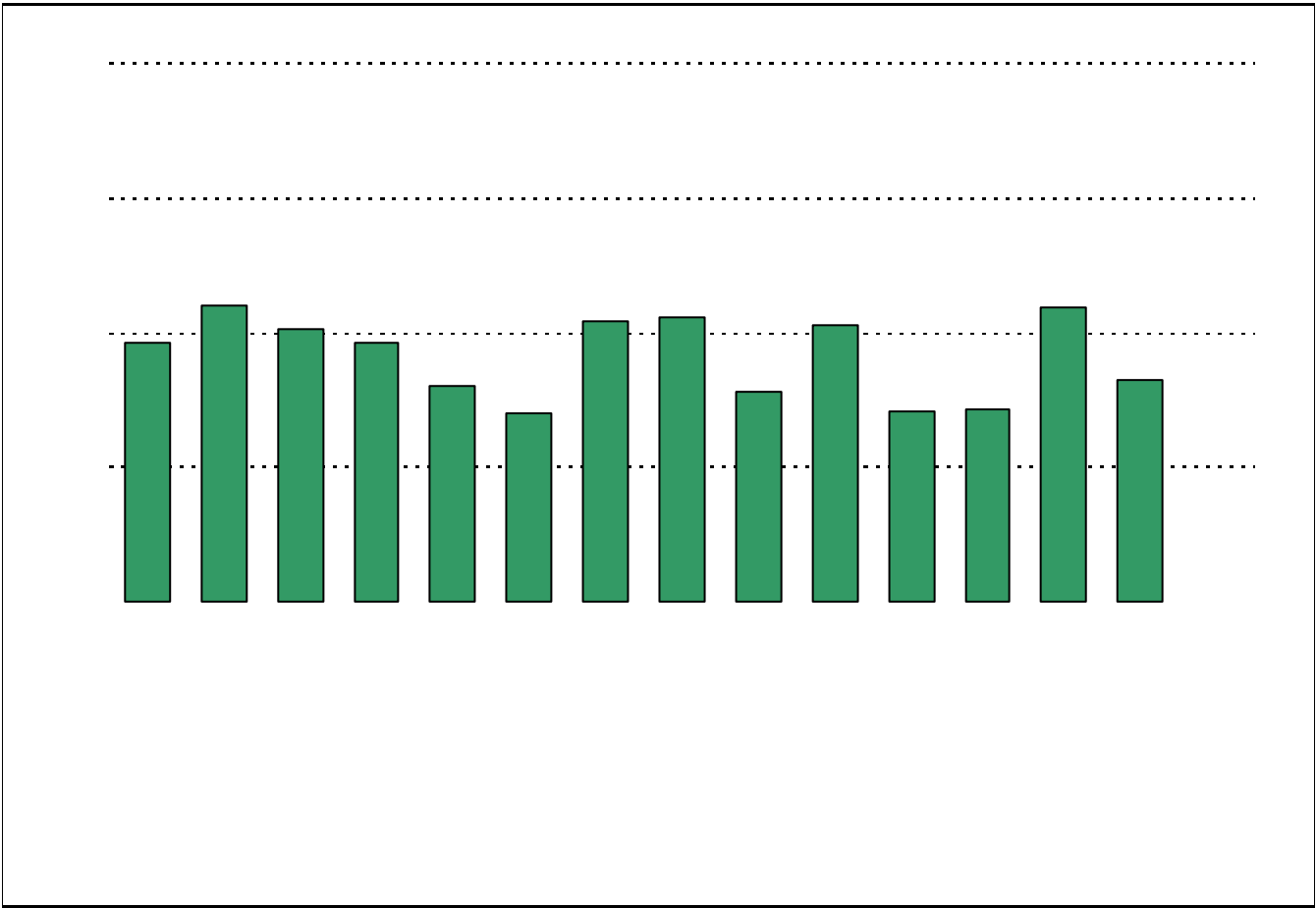
Grade	% of Students, as Reported by Campus Parent Respondents	% of Students in Campus Population
6th	54.5%	34.5%
7th	4.5%	33.6%
8th	40.9%	31.9%
9th	N/A	N/A
10th	N/A	N/A
11th	N/A	N/A
12th	N/A	N/A

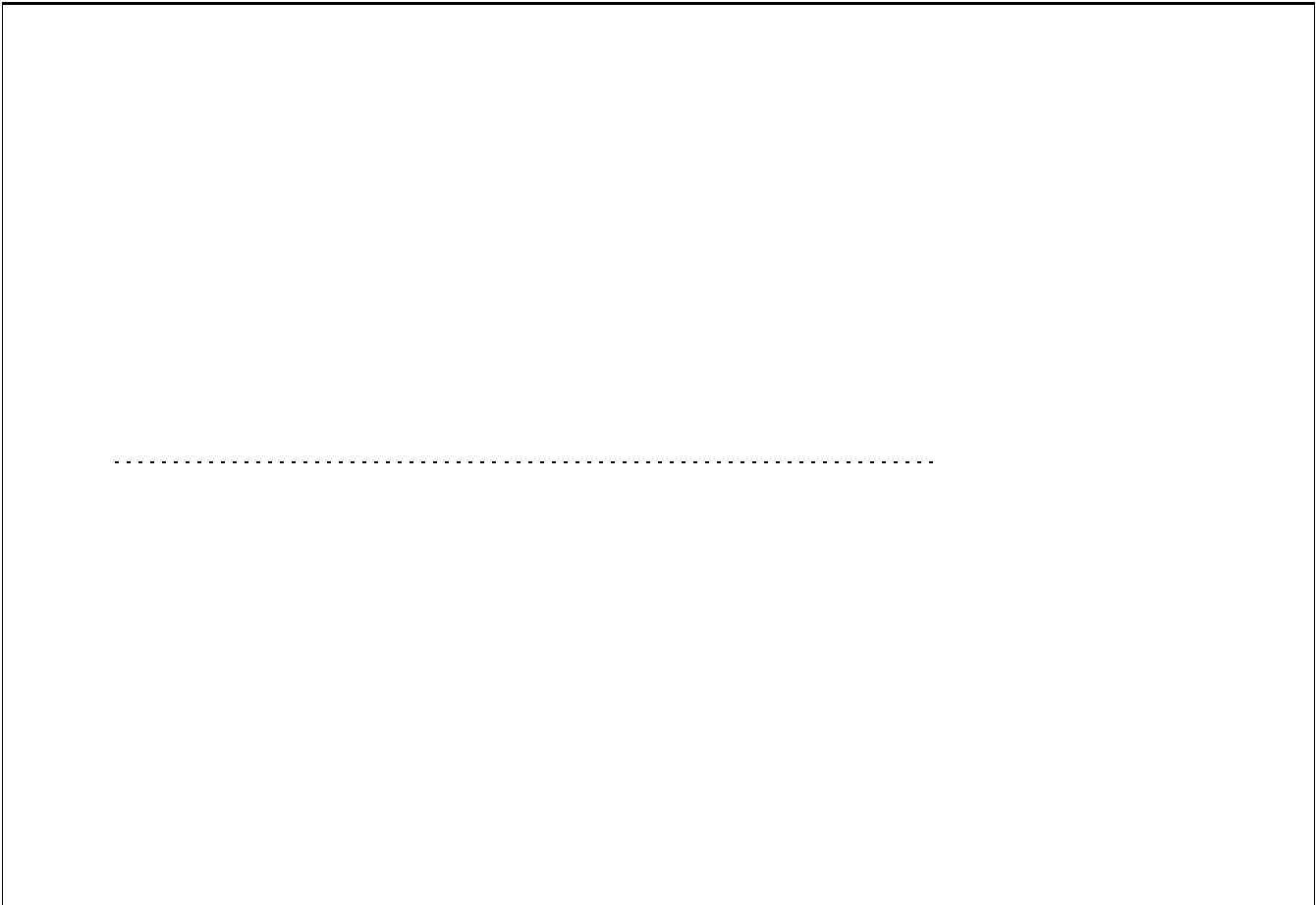
Note: Student population data are based on Fall PEIMS data submitted by the district to TEA, and may differ from the official AEIS report.

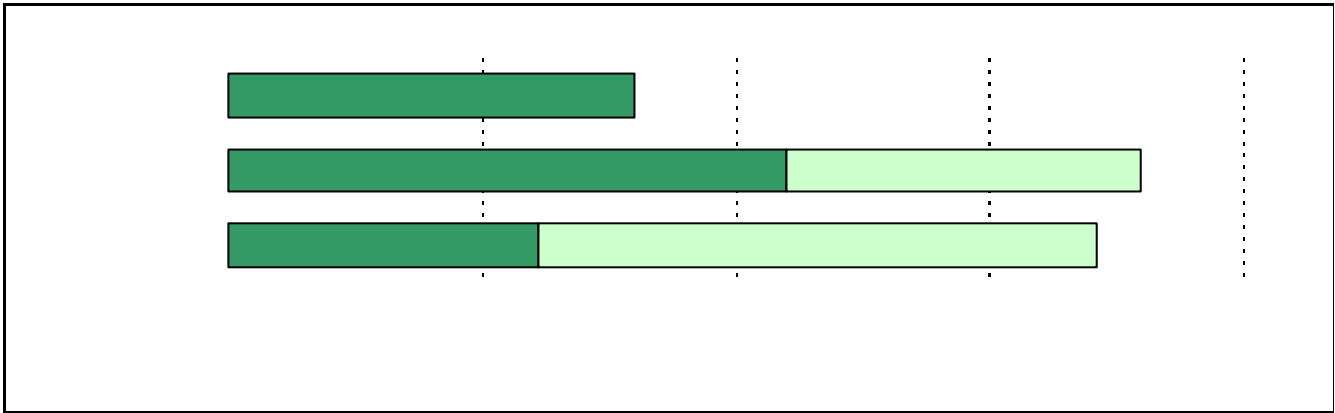
USING THE RESULTS OF THE AISD PARENT SURVEY

Each survey item is presented below, followed by a bar graph containing your school's results for two years and this year's results for all campuses at your level. You will be able to identify areas in which your school's results have changed over time, and you will be able to compare the responses of your school's parents to those of parents at your level district-wide.

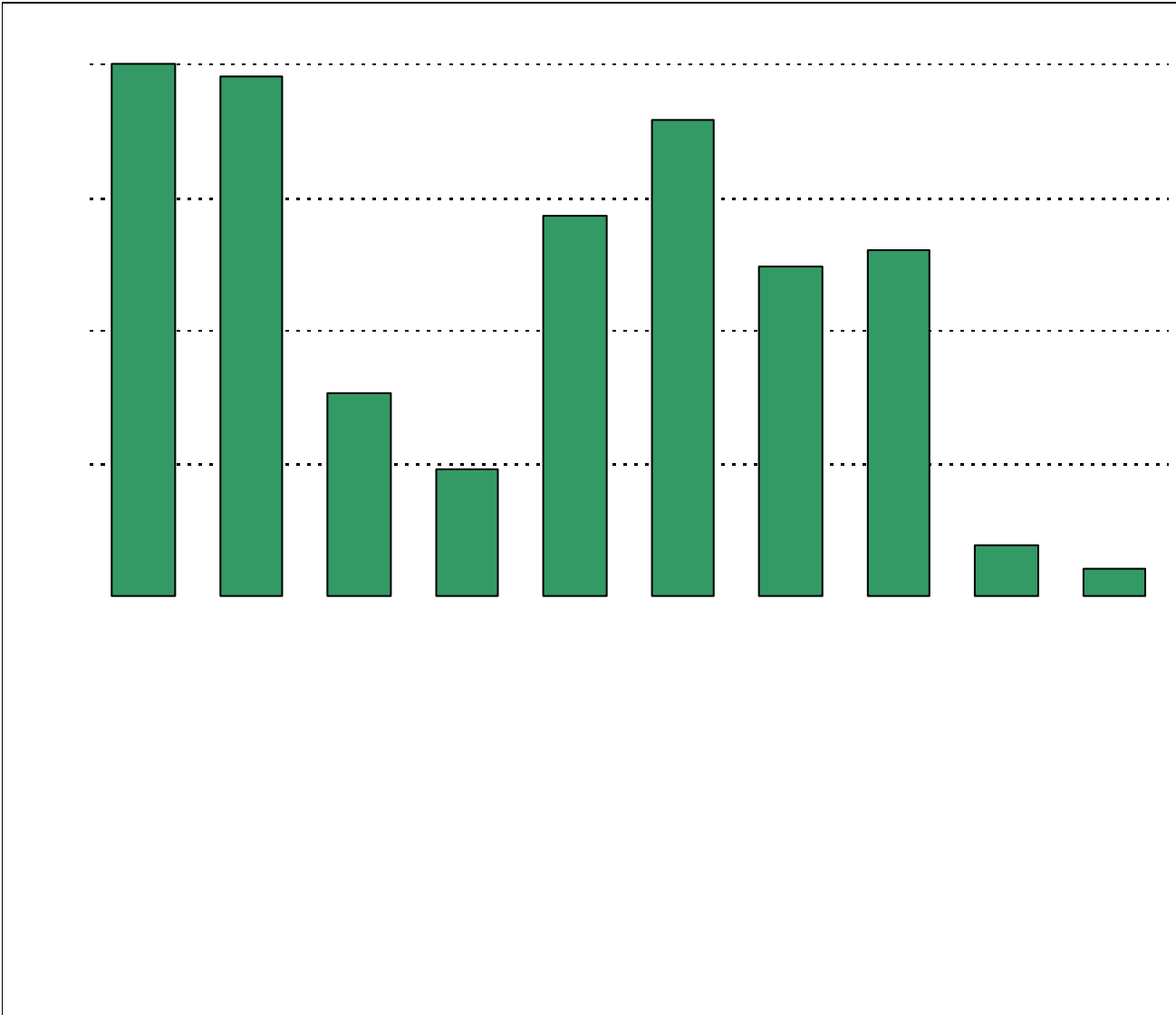
Please examine your results to determine areas of strength and opportunities for improvement. Areas of strength can be identified by large pe







Required



	Strongly Agree	Agree	Disagree	Strongly Disagree	Don't Know/NA
	9	4	0	1	5

		Strongly Agree	Agree	Disagree	Strongly Disagree	Don't Know/NA
11a.	n = 19	10	6	1	1	1
11b.	n = 20	8	10	0	1	1
11c.	n = 21	10	7	1	1	2
11d.	n = 21	10	9	0	1	1
11e.	n = 21	9	5	4	1	2
11f.	n = 21	8	11	0	1	1
11i.	n = 21	7	8	3	2	1
12a.	n = 20	5	9	1	2	3
12b.	n = 21	6	8	1	2	4
12c.	n = 20	6	8	1	2	3
12d.	n = 20	6	9	0	2	2
13a.	n = 20	8	9	3	0	0
13b.	n = 21	8	6	4	1	2
13c.	n = 19	6	7	3	2	1
13d.	n = 20	8	7	2	2	1
13e.	n = 20	8	7	1	3	1