

Martin Middle School

	9 695 <i>1.3%</i>
	37 707 <i>5.2%</i>

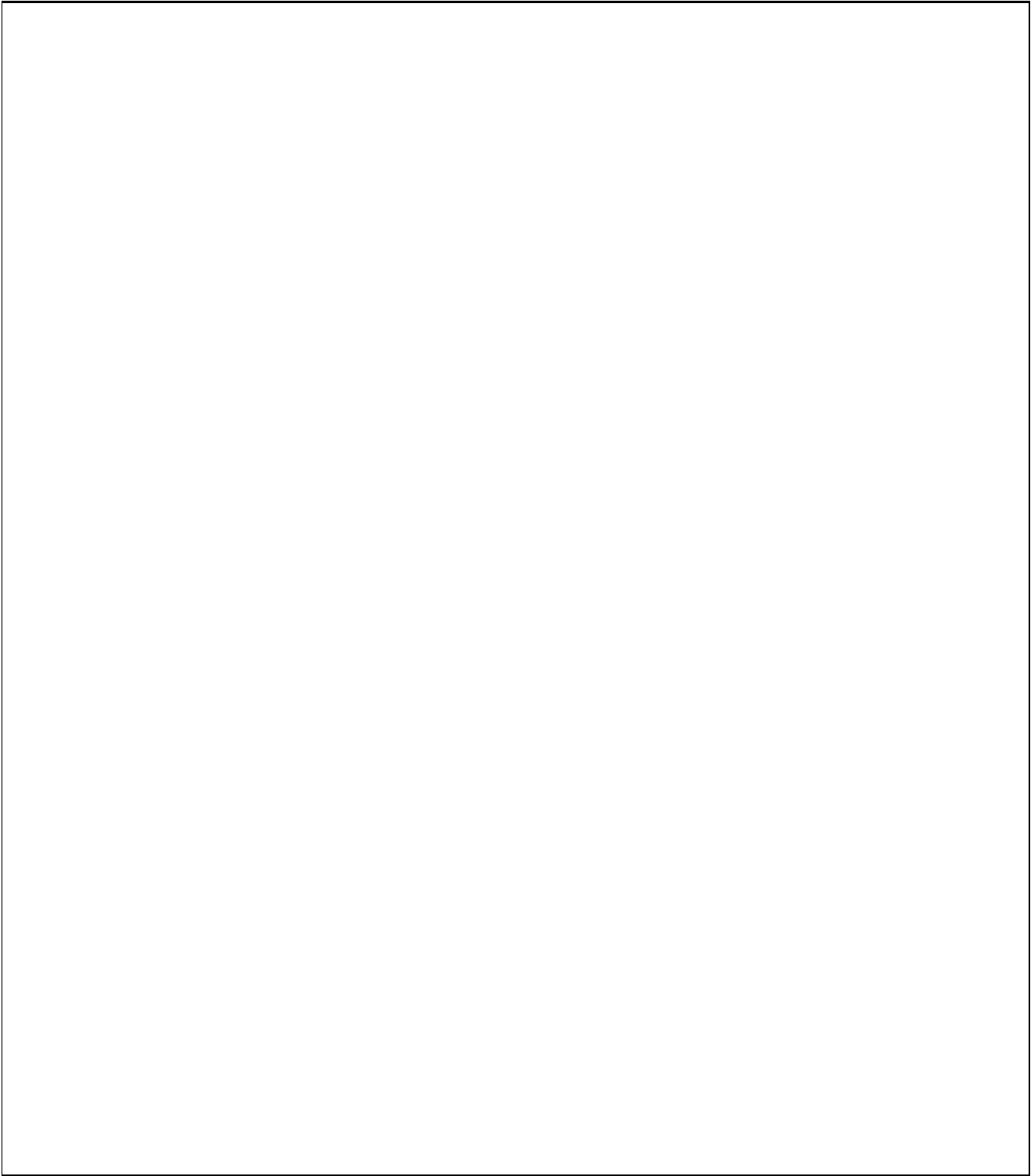
	0.3%

res		43.2%	32.4%
		27.0%	34.8%
		29.7%	32.8%
		N/A	N/A
		N/A	N/A
		N/A	N/A
		N/A	N/A

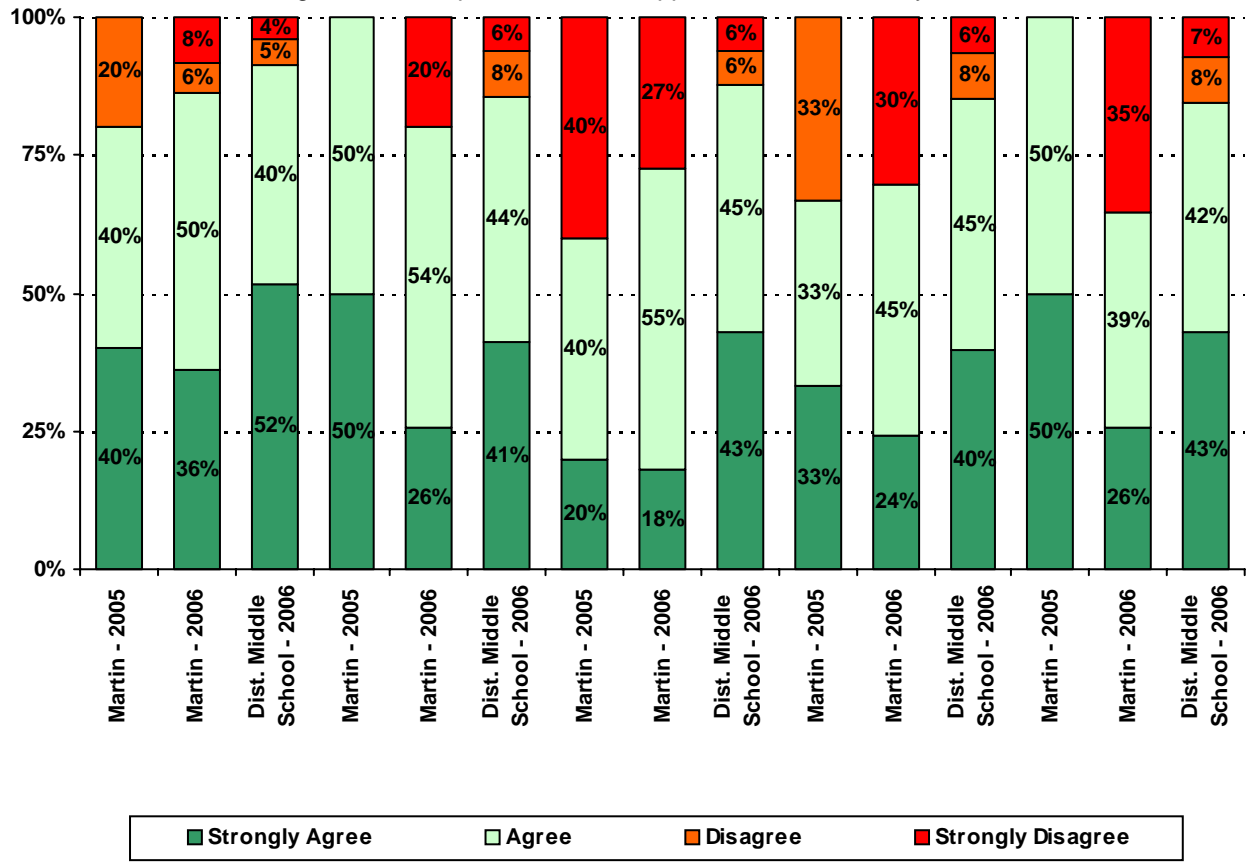
Note: Student population data are based on Fall PEIMS data submitted by the district to TEA, and may differ from the official AEIS report.

Each survey item is presented below, followed by a bar graph containing your school’s results for two years and this year’s results for all campuses at your level. You will be able to identify areas in which your school’s results have changed over time, and you will be able to compare the responses of your school’s parents to those of parents at your level district-wide.

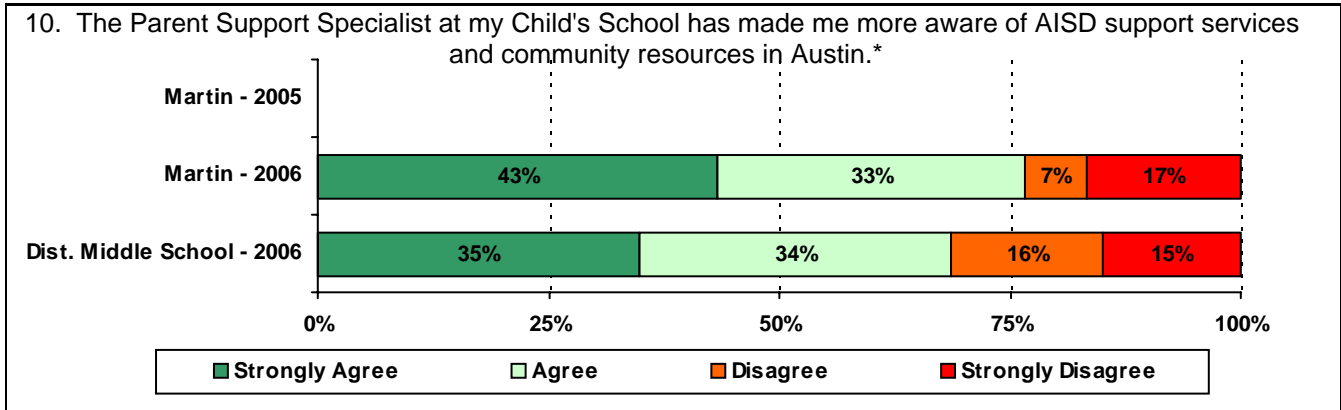
Please examine your results to determine areas of strength and opportunities for .4 361(sed)-4.tiesd i..4(R(h)0.4 d6X



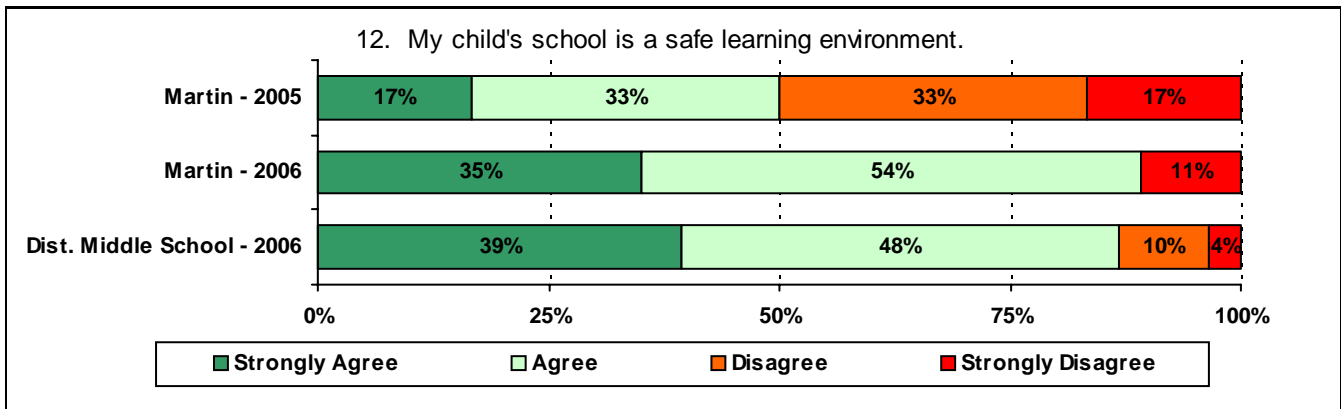
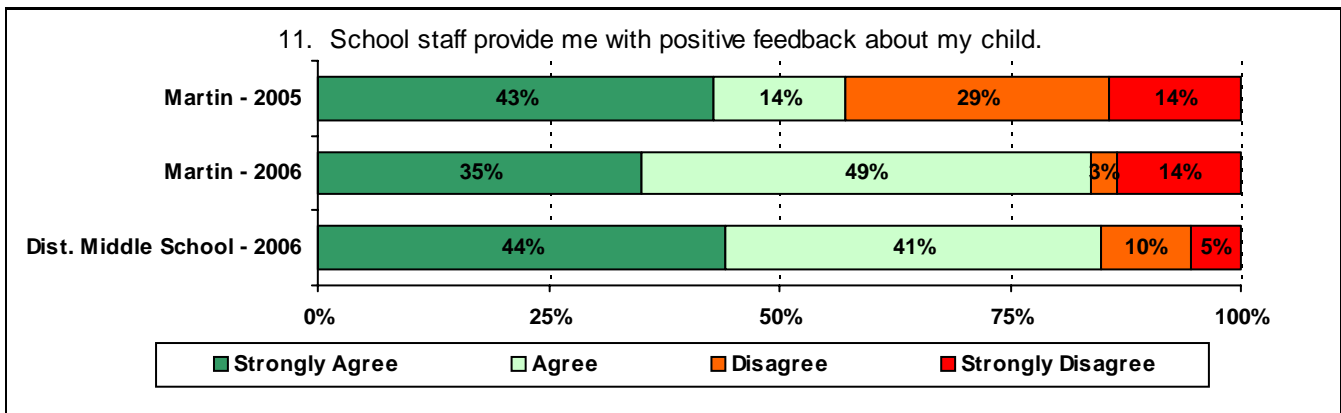
6. The following school staff provide me with opportunities for two-way communication.

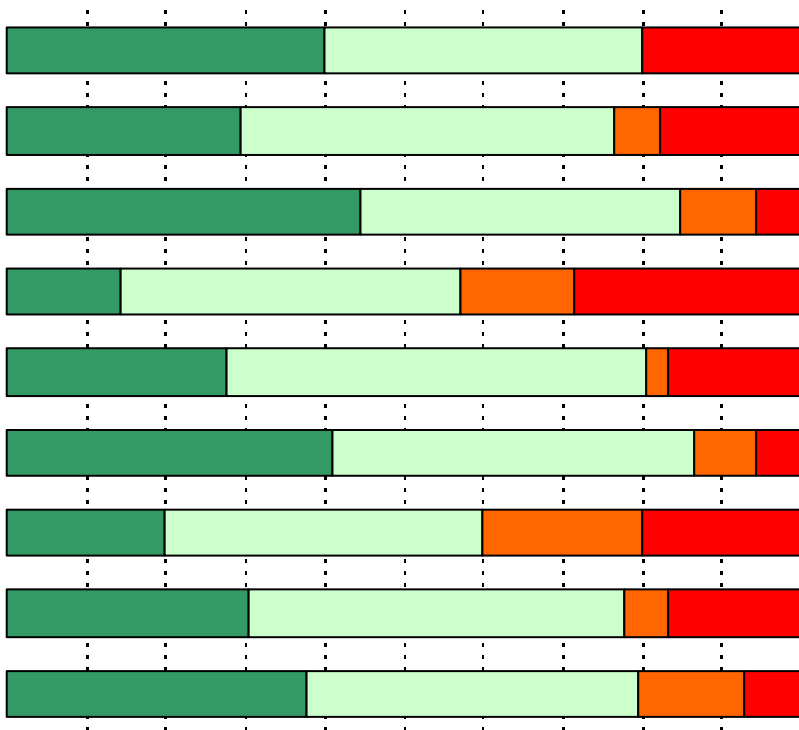




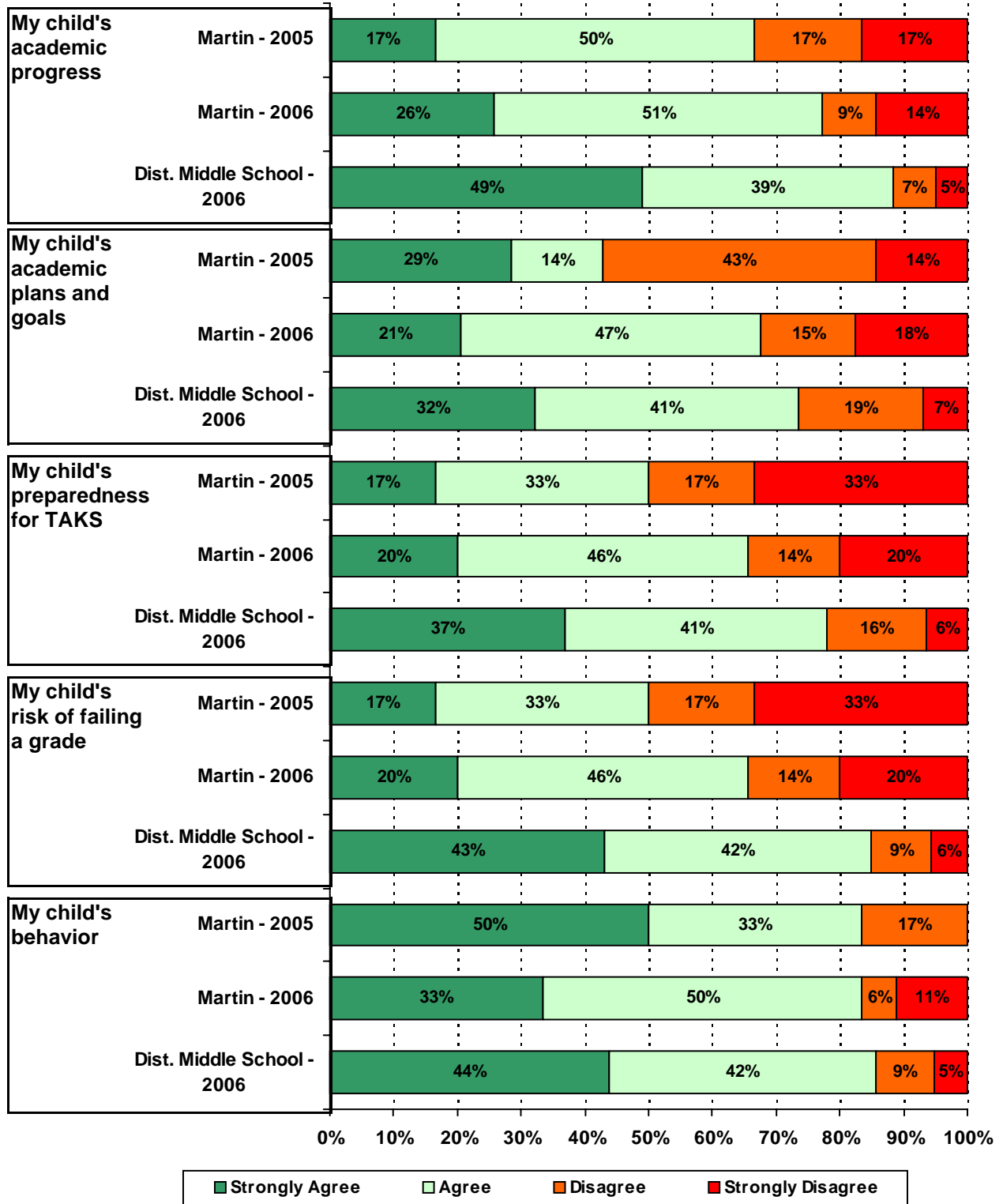


\* Item #10 was added to the survey in 2006

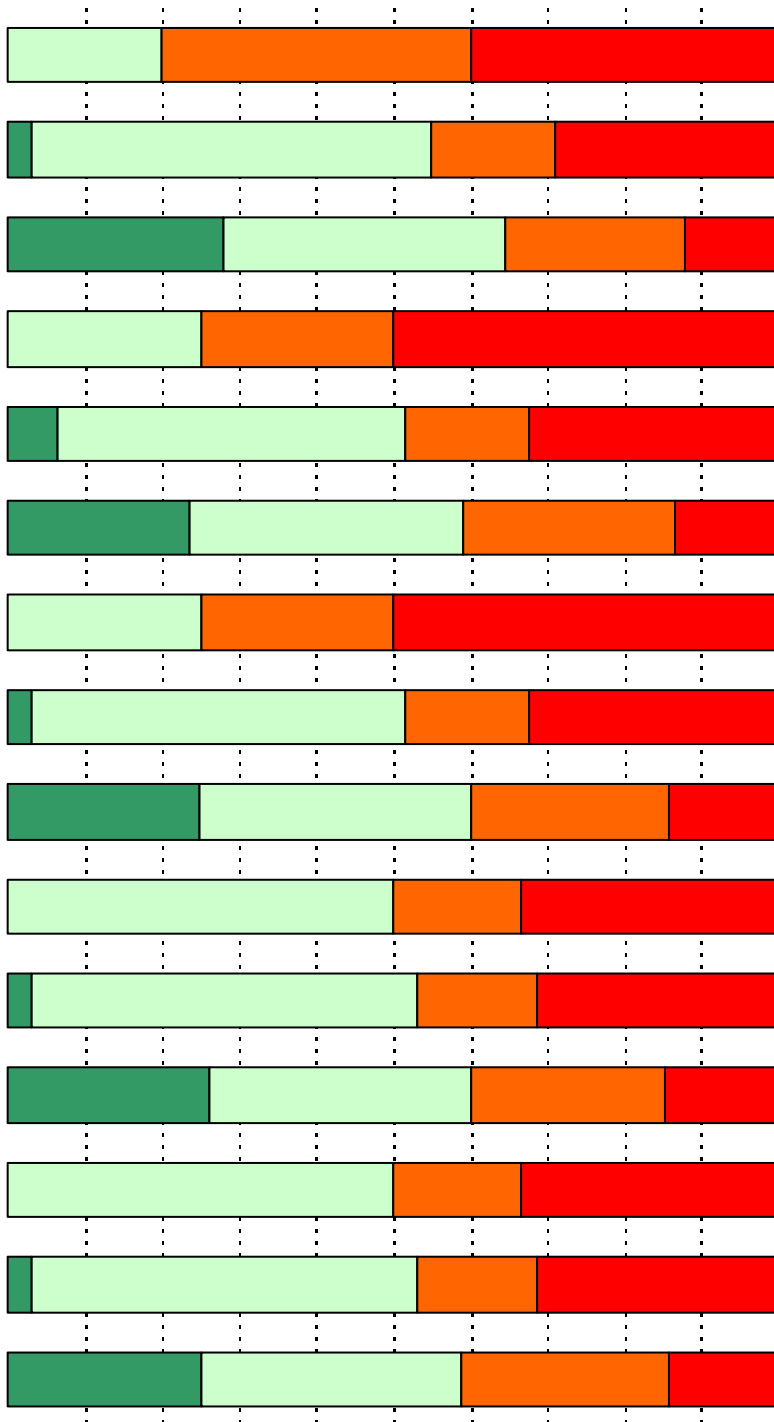




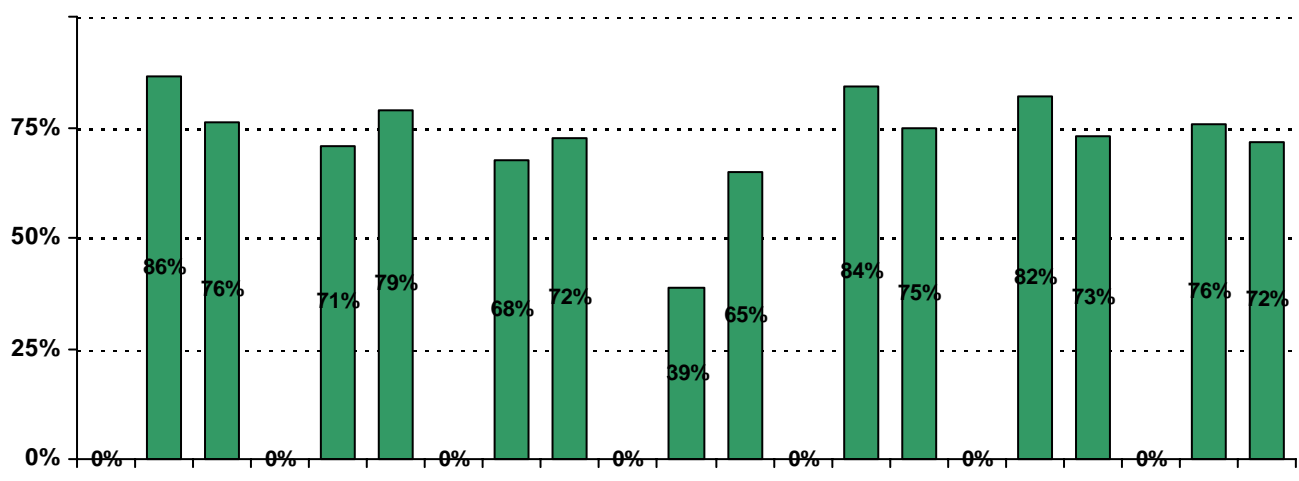
15. School staff provide me with enough of the following information about my child:





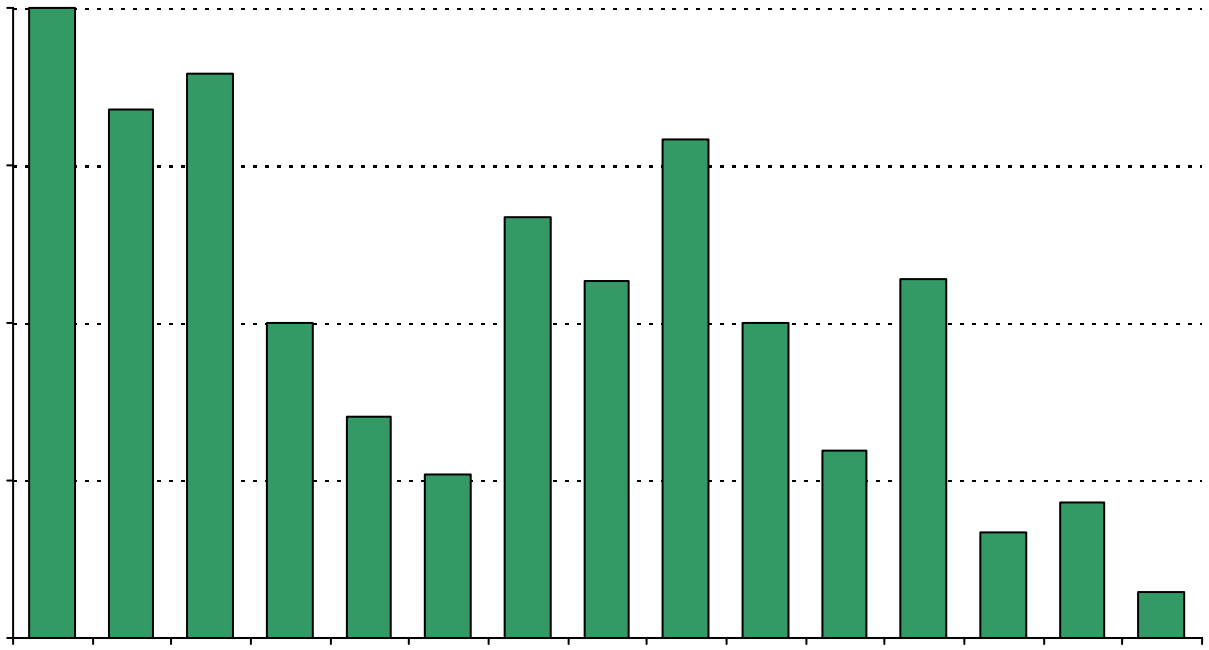


19. Which of the following activities do you participate in at your child's school:\*



\* Item(s) #17, #18, #19 added to the survey in 2006

7100%





Number of Martin Middle School Parent Responses, by Response Option  
(Continued)

	12	17	0	7	1
	10	17	4	5	1
	11	15	1	9	1
	10	16	2	6	3
	10	19	1	6	1
	11	17	2	6	1
	9	18	3	5	1
	7	16	5	6	2
	7	16	5	7	1
	7	16	5	7	1
	12	18	2	4	0