



2005-2006 AISD Parent Survey Results

Linder Elementary School

The following report contains the results of the 2005-2006 AISD Parent Survey for your campus and all AISD schools at your level. The first section of this report provides a comparison of the campus demographics and the demographics reported by parents who responded to the survey from your campus. The next section describes the percentages of parents selecting specific responses for each survey item, and the final section indicates the actual number of parents who selected each response option. Campus survey results should be examined for areas of strength and opportunities for improvement. Results for all AISD schools at your level and results for your campus from 2004-2005 are presented to provide a reference for comparison.

How many parents responded to the survey in 2004-2005 and 2005-2006, and how does this compare to the number of students in the population each year?

	Campus	District EL	District MS	District HS
# of Parents Responding in 2004-2005	306	12,137	2,007	2,700
# of Students in 2004-2005	988	43,566	15,705	19,976
<i>Ratio of Parent Respondents to Students, 2004-2005</i>	31%	27.8%	12.8%	13.5%
# of Parents Responding in 2005-2006	307	10,900	1,801	2,085
# of Students in 2005-2006	821	44,827	15,624	20,081
<i>Ratio of Parent Respondents to Students, 2005-2006</i>	37.4%	24.3%	11.5%	10.4%

Note: The ratio of parent respondents to students is listed above as a percentage for ease of interpretation; however, it is the number of parents who responded per 100 students enrolled.

What did parents report as their child's ethnicity, and how does this compare to the ethnic distribution of the student population?

Ethnicity	% of Students, as Reported by Campus Parent Respondents	% of Students in Campus Population
African American	8.6%	9.9%
Asian	1.2%	1.1%
Hispanic	86.4%	85.5%
Native American	0.8%	0.1%
White	2.9%	3.4%

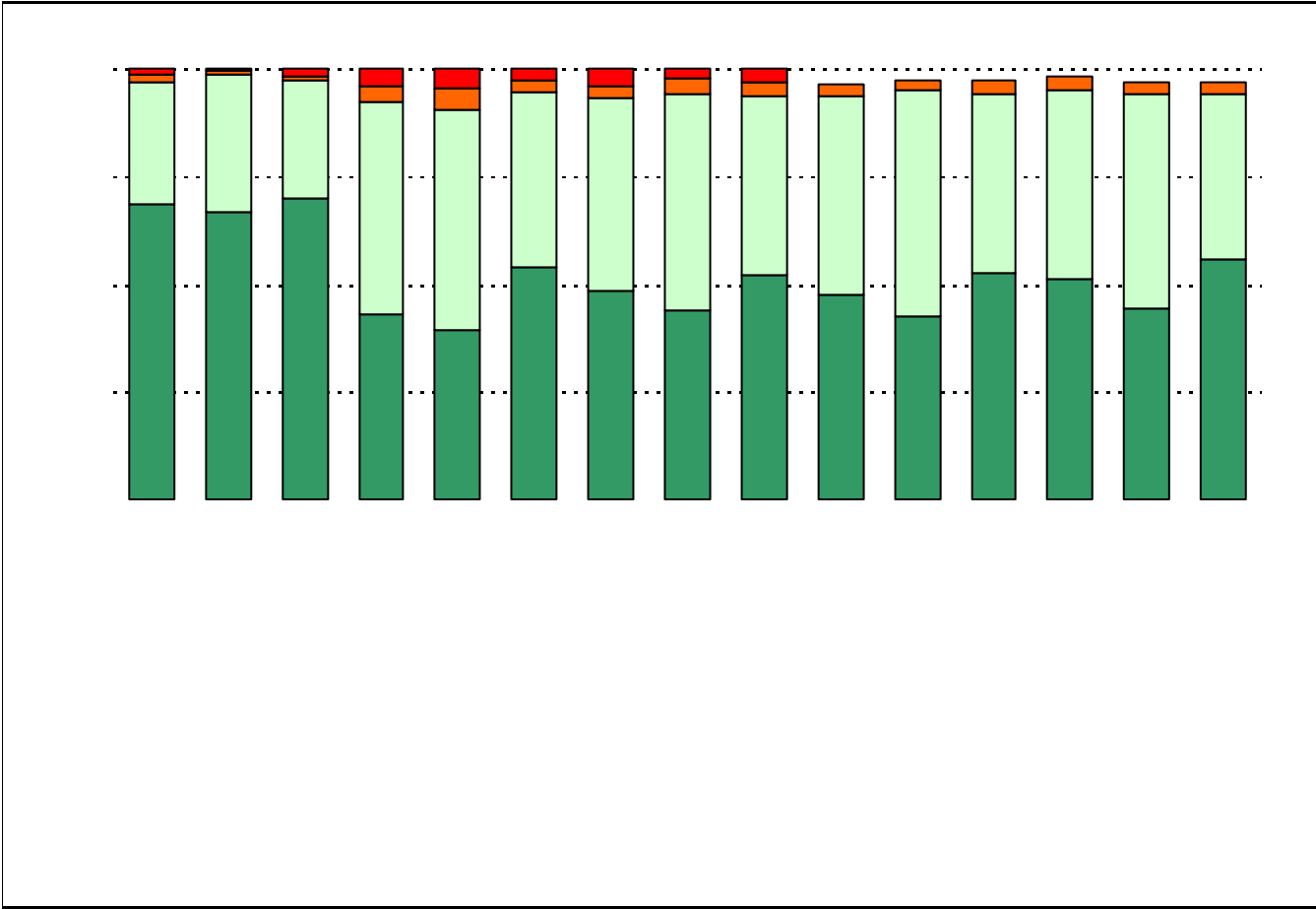
What did parents report as their child's grade, and how does this compare to the grade level distribution of the student population?

Grade	% of Students, as Reported by Campus Parent Respondents	% of Students in Campus Population
EC	0.0%	2.2%
PK	0.5%	16.9%
K	0.0%	15.2%
1st	21.5%	16.7%
2nd	22.1%	14.6%
3rd	19.0%	12.2%
4th	20.0%	12.9%
5th	16.9%	9.3%
6th	N/A	N/A

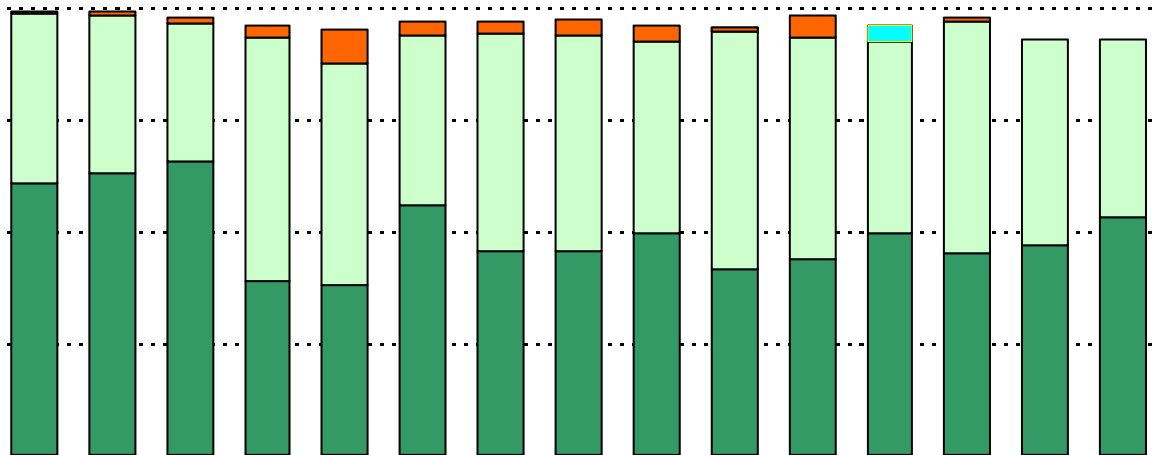
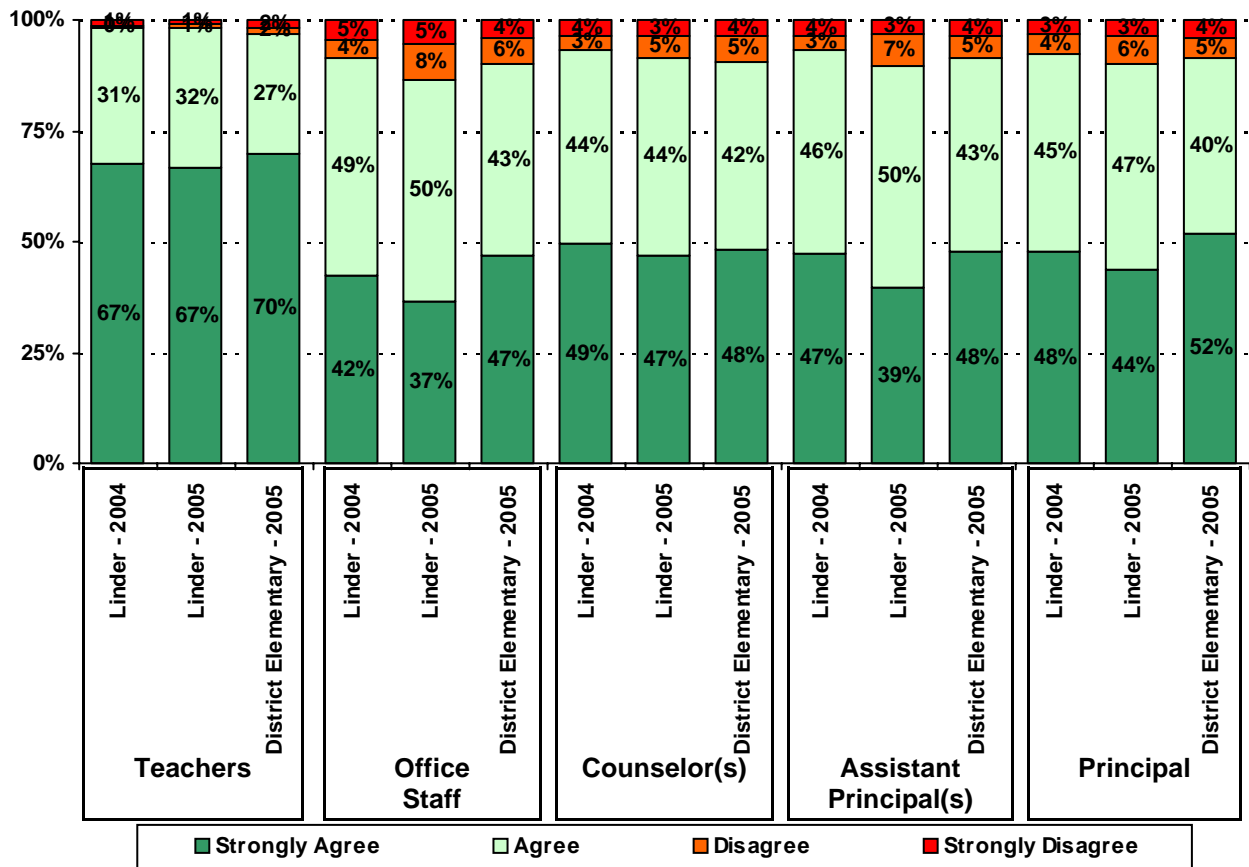
Note: Student population data are based on Fall PEIMS data submitted by the district to TEA, and may differ from the official AEIS report.

USING THE RESULTS OF THE AISD PARENT SURVEY

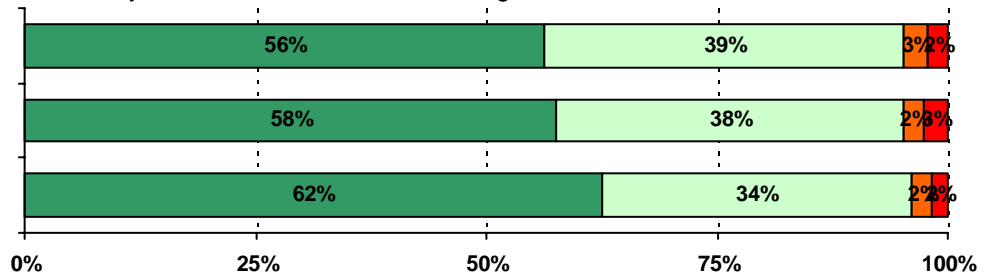
Each survey item is presented below, followed by a bar graph containing your school's results for two years and this year's results for all campuses at your level. You will be able to identify area49(o)-7.1(pul)5004



6. The following school staff have helped me to become more involved in my child's education.



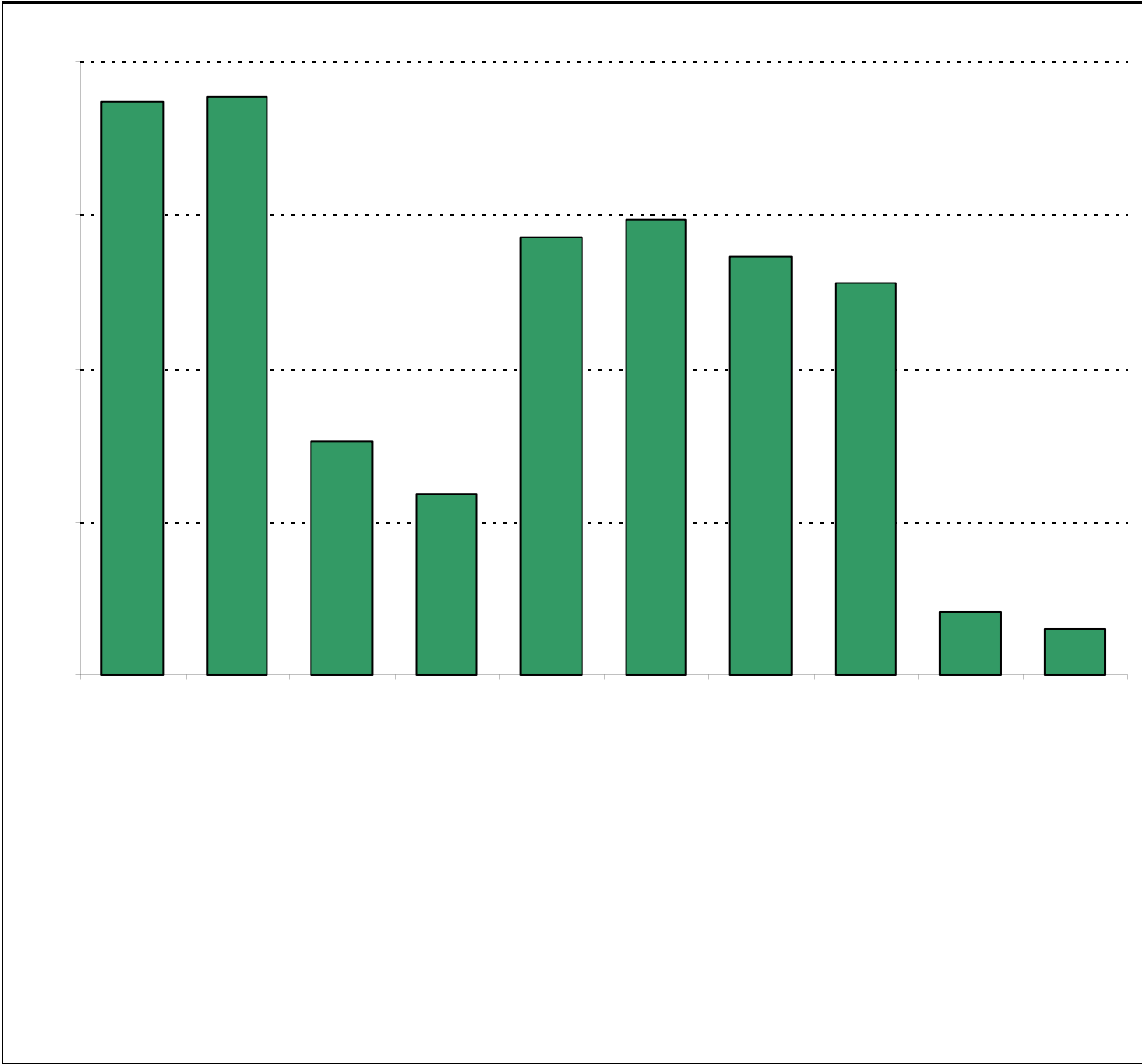
9. My child's school is a safe learning environment.

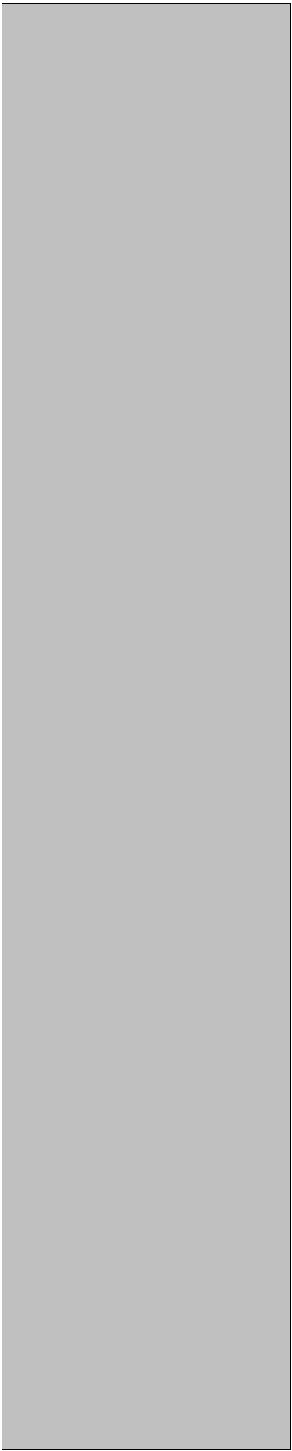


**Required
curriculum**



Required





11a.	n = 252	127	98	3	5	19
11b.	n = 252	130	103	3	7	9
11c.	n = 248	119	102	2	11	14
11d.	n = 258	141	104	1	5	7
11e.	n = 246	125	95	3	4	19
11f.	n = 254	131	109	1	7	6
11i.	n = 225	104	69	2	4	46
		98	98	13	8	35
12b.	n = 248	97	95	17	7	32
		90	94	17	10	34