



Lanier High School

How many parents responded to the survey in 2004-2005 and 2005-2006, and how does this compare to the number of students in the population each year?

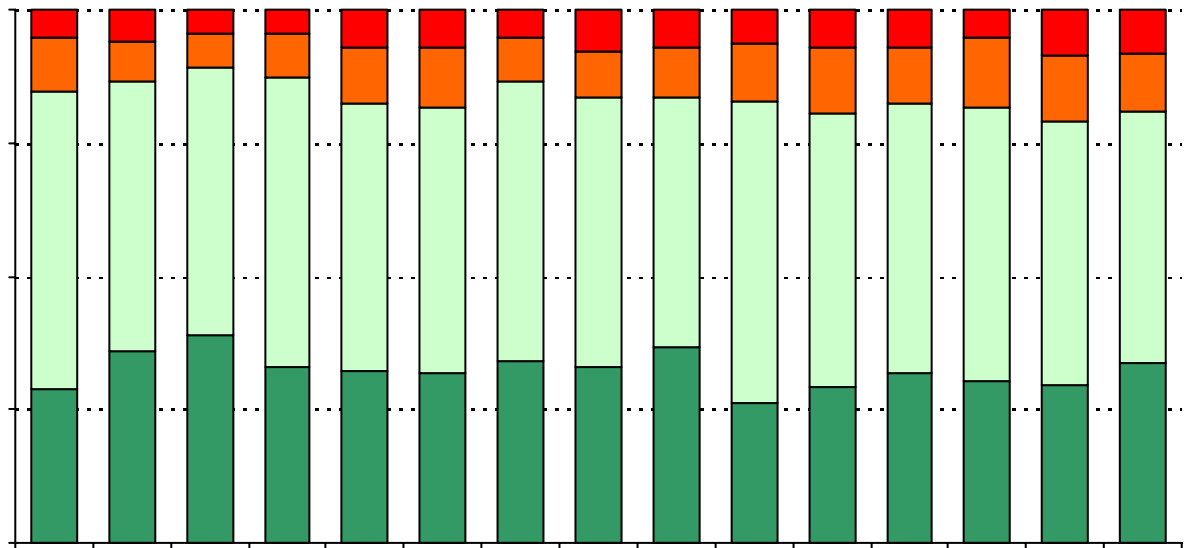
	Campus	District EL	District MS	District HS
# of Parents Responding in 2004-2005	926			
# of Students in 2004-2005	1,733			
<i>Ratio of Parent Respondents to Students, 2004-2005</i>	53.4%			
# of Parents Responding in 2005-2006	442			
# of Students in 2005-2006	1,590			
<i>Ratio of Parent Respondents to Students, 2005-2006</i>	27.8%			

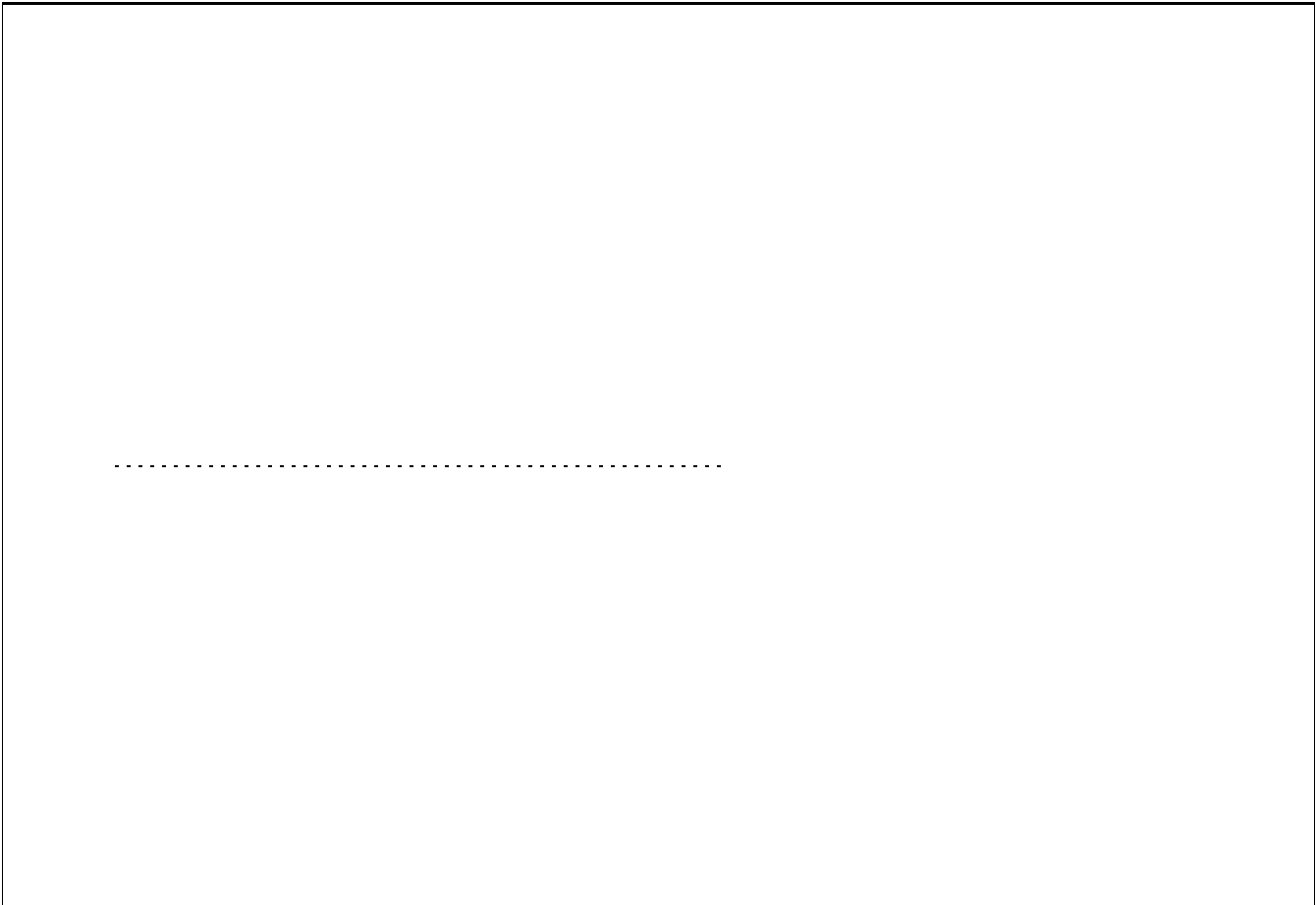
Note: The ratio of parent respondents to students is listed above as a percentage for ease of interpretation; however, it is the number of parents who responded per 100 students enrolled.

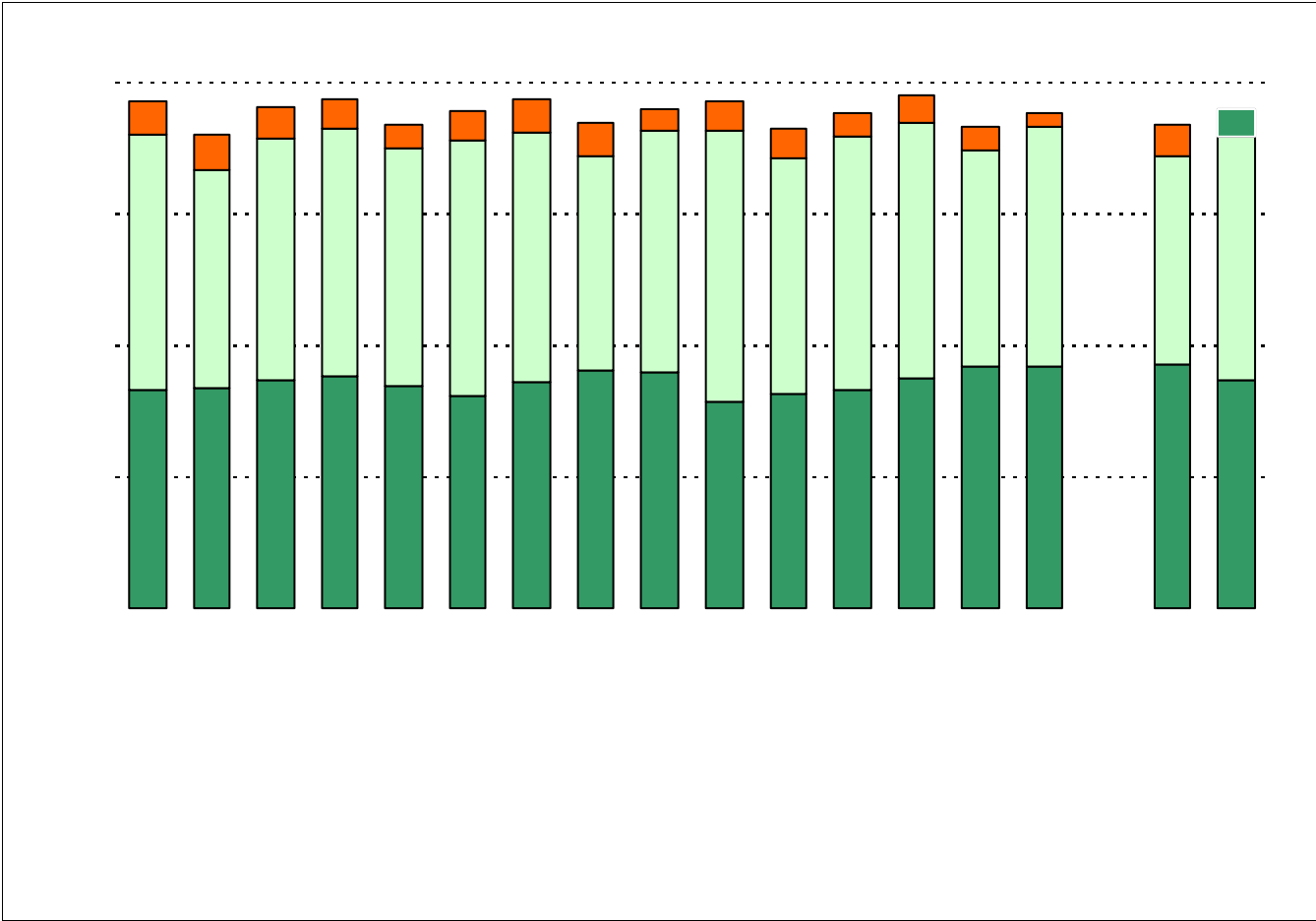
What did parents report as their child's ethnicity, and how does this compare to the ethnic distribution of the student population?

Ethnicity	% of Students, as Reported by Campus Parent Respondents	% of Students in Campus Population
African American	12.2%	
Asian	5.3%	
Hispanic	73.4%	
Native American	1.0%	0.3%
White	8.1%	8.9%

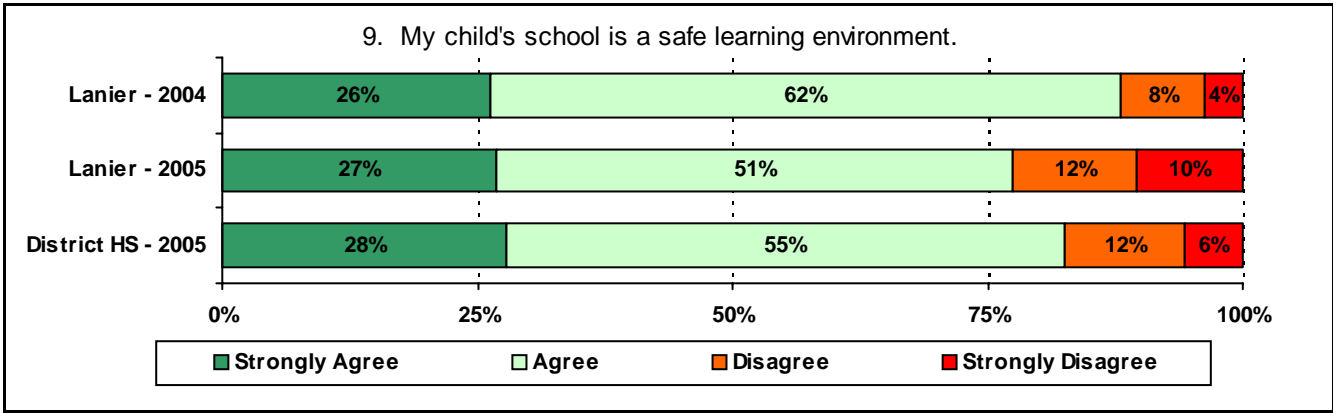
5. The following table shows the results of the simulation for the different scenarios. The values are in thousands of units.







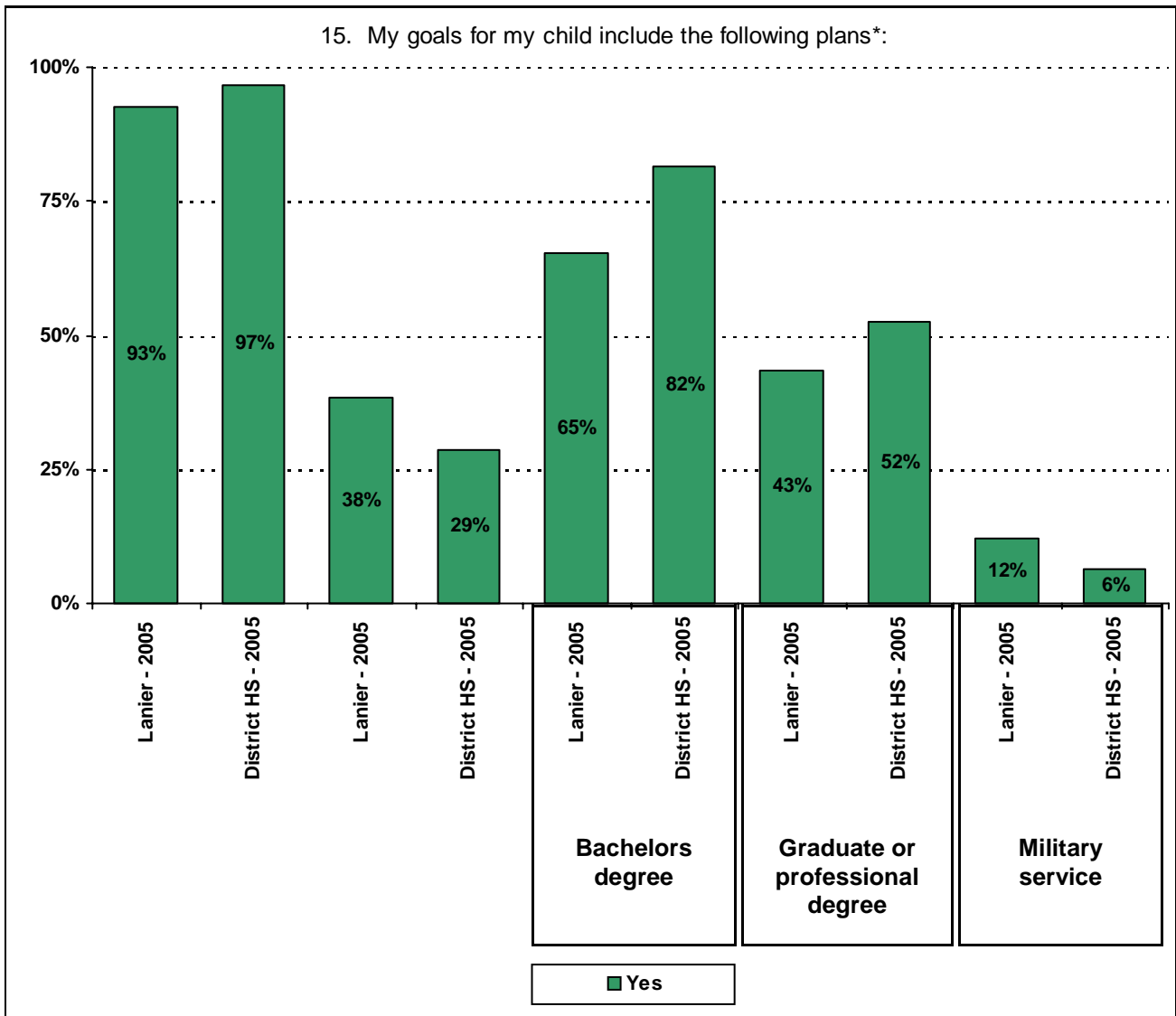
* The "Other" category was added to the survey in 2005.



.....
|

* The "Parent/Family Involvement Opportunities" and "Parent/Family Resources" categories were added to the survey in 2005.

Required



* Item 15 was added to the survey on 08/15/2005. Item 15 was deleted on 07/17/2007.

Item Response Details

Number of Lanier High School Parent Responses, by Response Option

		Strongly Agree	Agree	Disagree	Strongly Disagree	Don't Know/NA
4a.	n = 424	124	172	18	16	94
4b.	n = 416	104	177	22	18	95
4c.	n = 414	140	165	23	26	60
4d.	n = 414	138	185	27	20	44
4e.	n = 417	147	179	21	17	53
5a.	n = 414	97	163	41	28	85
5b.	n = 411	97	169	41	23	81
5c.	n = 410	114	175	30	27	64
5d.	n = 410	113	174	37	25	61
5e.	n = 416	135	189	28	23	41
6a.	n = 412	87	147	46	45	87
6b.	n = 404	83	144	52	43	82
6c.	n = 409	121	156	31	39	62
6d.	n = 402	80	153	50	43	76
6e.	n = 412	137	172	22	34	47
7a.	n = 418	87	150	32	34	115
7b.	n = 410	80	148	43	31	108
7c.	n = 415	107	160	32	33	83
7d.	n = 409	88	145	44	29	103
7e.	n = 413	127	169	23	28	66
8a.	n = 420	164	146	15	31	64
8b.	n = 411	142	157	20	31	61
8c.	n = 408	164	147	23	29	45
8d.	n = 404	147	159	15	29	54
8e.	n = 411	156	155	25	38	37
8f.	n = 400	160	136	21	28	55
9.	n = 433	106	200	48	41	38
10.	n = 418	108	188	37	41	44

Number of Lanier High School Parent Responses, by Response Option
(Continued)

		Strongly Agree	Agree	Disagree	Strongly Disagree	Don't Know/NA
11a.	n = 422	141	188	25	30	38
11b.	n = 416	146	197	22	20	31
11c.	n = 411	135	193	30	21	32
11d.	n = 415	142	199	25	19	30
11e.	n = 412	129	186	28	25	44
11f.	n = 415	134	196	29	24	32
11g.	n = 410	118	186	38	27	41
11h.	n = 415	114	180	32	38	51
11i.	n = 407	128	173	36	30	40
12a.	n = 414	97	133	49	36	99
12b.	n = 414	89	134	55	40	96
12c.	n = 405	68	148	63	41	85
12d.	n = 414	122	159	46	28	49
12e.	n = 415	98	165	52	26	74
12f.	n = 415	80	171	45	38	81
13a.	n = 420	160	181	27	27	25
13b.	n = 409	103	175	46	41	44
13c.	n = 410	110	176	50	37	37
13d.	n = 408	134	182	31	31	30
13e.	n = 405	139	166	26	39	35
15.	n = 414					