



2005-2006 AISD Parent Survey Results

Langford Elementary School

The following report contains the results of the 2005-2006 AISD Parent Survey for your campus and all AISD schools at your level. The first section of this report provides a comparison of the campus demographics and the demographics reported by parents who

How many parents responded to the survey in 2004-2005 and 2005-2006, and how does this compare to the number of students in the population each year?

	Campus	District EL	District MS	District HS
	155			
	889			
	17.4%			
	266			
	1,007			
	26.4%			

Note: The ratio of parent respondents to students is listed above as a percentage for ease of interpretation; however, it is the number of parents who responded per 100 students enrolled.

What did parents report as their child's ethnicity, and how does this compare to the ethnic distribution of the student population?

Ethnicity	% of Students, as Reported by Campus Parent Respondents	% of Students in Campus Population
	8.3%	
Asian	1.4%	0.8%
Hispanic	86.1%	81.7%
Native American	0.9%	0.0%
White	3.2%	5.3%

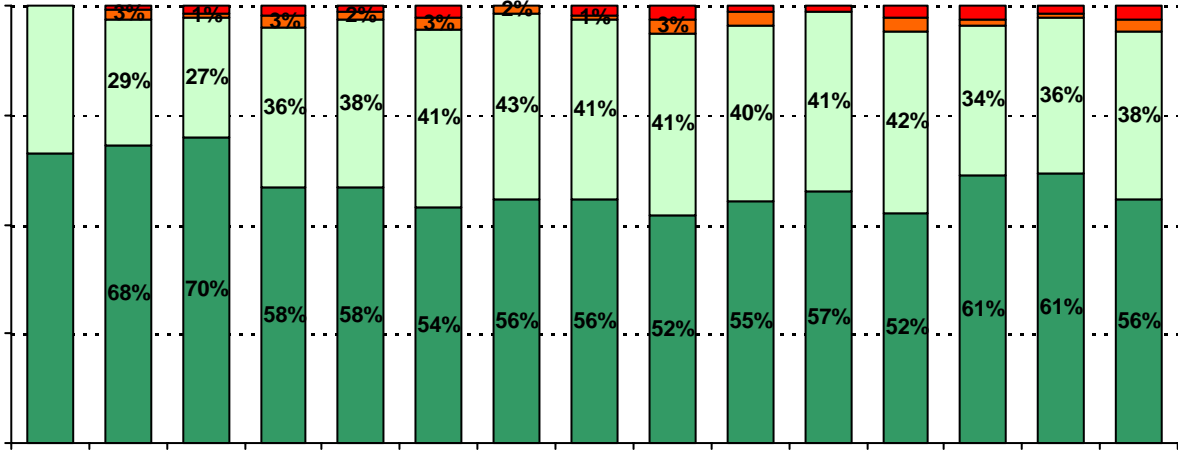
What did parents report as their child's grade, and how does this compare to the grade level distribution of the student population?

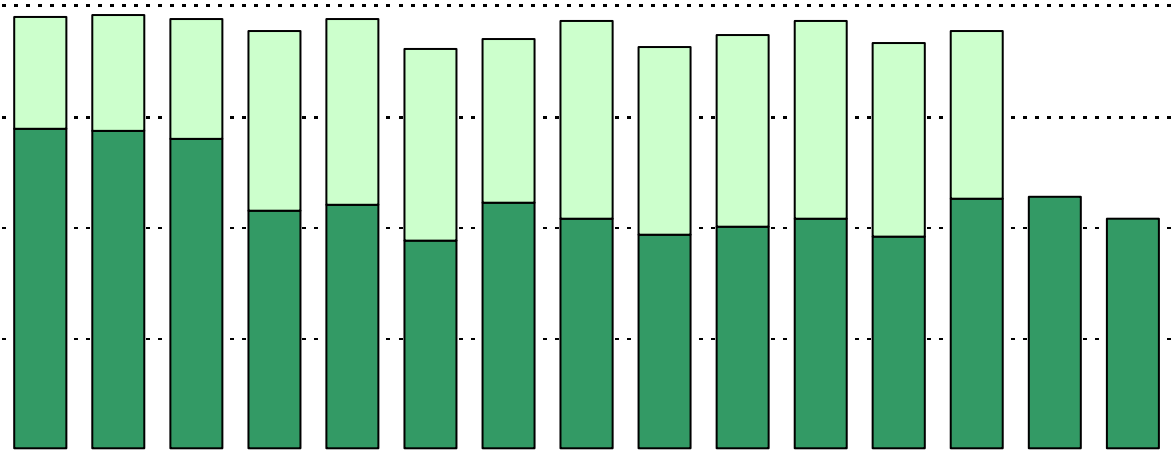
Grade	% of Students, as Reported by Campus Parent Respondents	% of Students in Campus Population
EC	0.0%	0.9%
PK	0.0%	14.1%
K	0.0%	18.0%
1st	14.1%	16.1%
2nd	14.6%	12.7%
3rd	28.6%	13.6%
4th	28.6%	11.5%
5th	14.1%	13.1%
6th	N/A	N/A

Note: Student population data are based on Fall PEIMS data submitted by the district to TEA, and may differ from the official AEIS report.

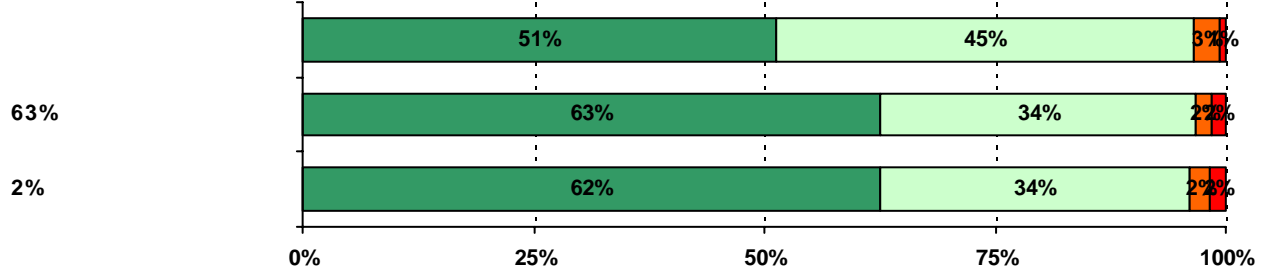
USING THE RESULTS OF THE AISD PARENT SURVEY

5. The following school staff provide me with opportunities for two-way communication.

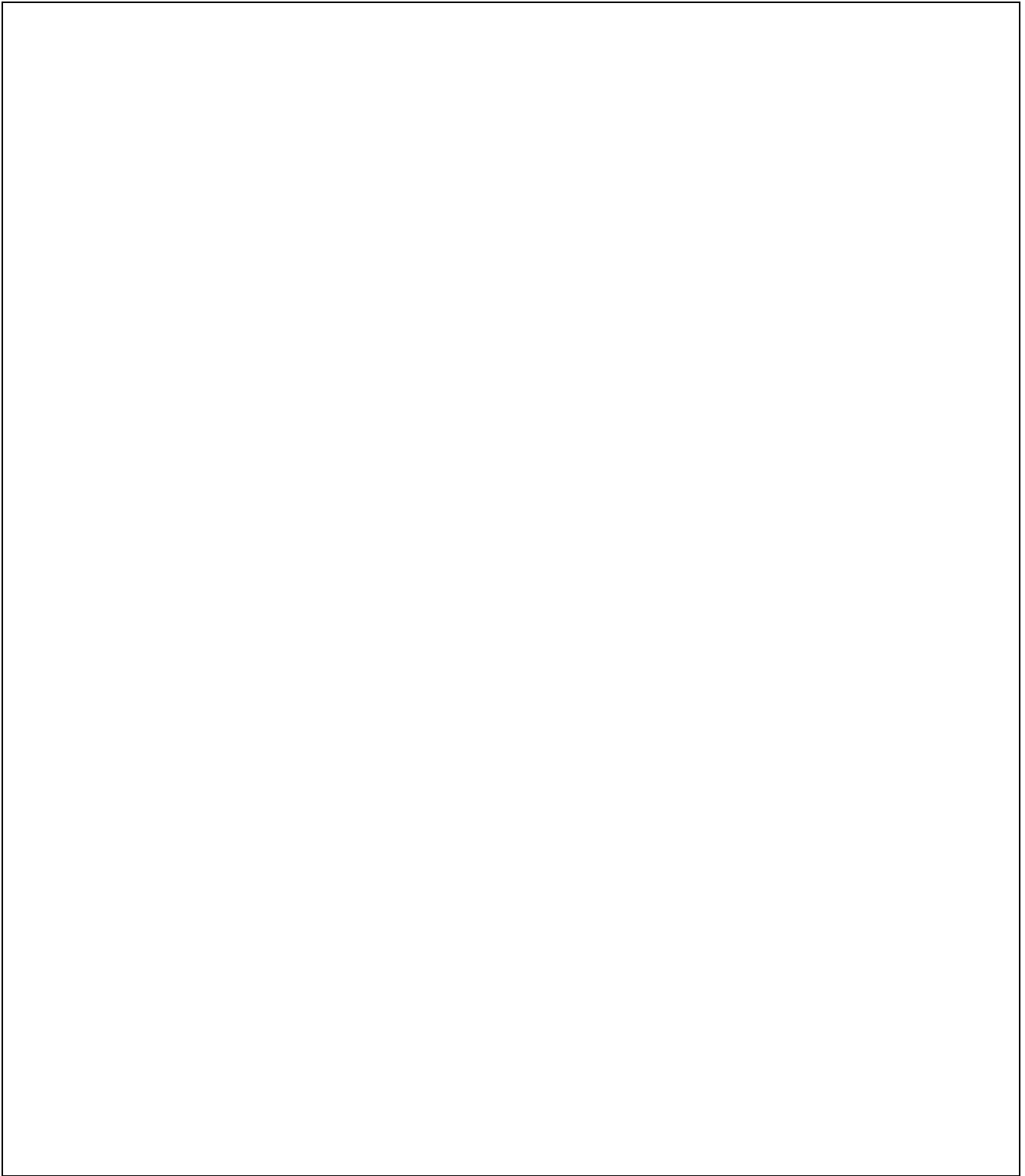




9. My child's school is a safe learning environment.

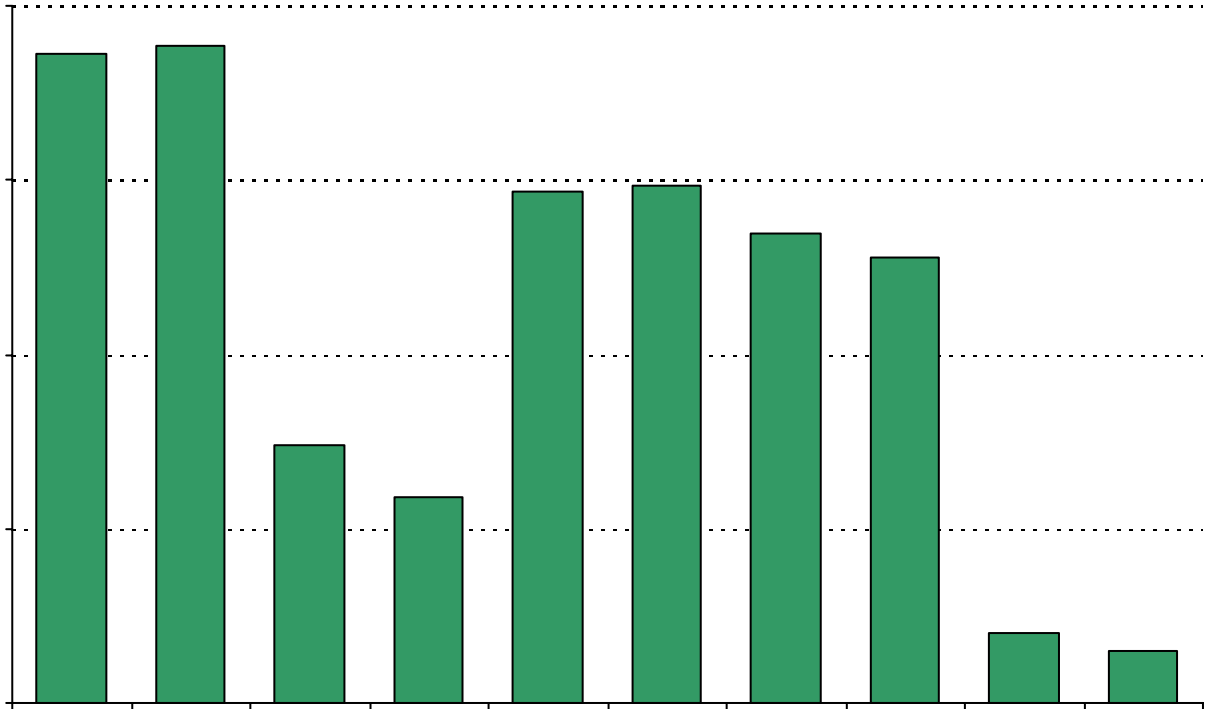


.....



Required

14. My goals for my child include the following plans*:



Item Response Details

Number of Langford Elementary School Parent Responses, by Response Option

		Strongly Agree	Agree	Disagree	Strongly Disagree	Don't Know/NA
4a.	n = 247	149	73	6	4	15
4b.	n = 231	127	75	6	2	21
4c.	n = 235	125	77	1	2	30
4d.	n = 250	147	84	5	4	10
4e.	n = 252	164	70	4	5	9
5a.	n = 234	126	73	2	4	29
5b.	n = 222	108	77	0	3	34
5c.	n = 230	108	80	2	4	36
5d.	n = 241	129	85	4	3	20
5e.	n = 249	163	69	6	2	9
6a.	n = 232	116	80	3	5	28
6b.	n = 221	98	85	3	4	31
6c.	n = 223	96	82	3	4	38
6d.	n = 226	104	80	3	3	36
6e.	n = 249	171	63	2	3	10
7a.	n = 234	116	72	4	4	38
7b.	n = 224	98	77	4	3	42
7c.	n = 225	91	80	3	5	46
7d.	n = 229	95	81	3	5	45
7e.	n = 251	156	65	3	2	25
8a.	n = 235	153	65	2	3	12
8b.	n = 224	139	66	1	3	15
8c.	n = 228	137	64	2	2	23
8d.	n = 228	146	67	0	2	13
8e.	n = 243	163	64	1	3	12
8f.	n = 233	130	72	6	7	1
9.	n = 258	155	85	4	4	10
10.	n = 257	156	86	2	3	10

11a.	n = 239	138	75	2	4	20
11b.	n = 236	145	81	1	2	7
11c.	n = 237	145	80	1	2	9
11d.	n = 237	148	78	0	2	9
11e.	n = 233	128	80	3	1	21
11f.	n = 236	145	78	2	2	9
11i.	n = 228	129	65	2	3	29
12a.	n = 233	120	65	8	4	36
12b.	n = 231	108	76	8	3	36
12c.	n = 230	111	64	12	6	37
12d.	n = 233	125	69	10	3	26
13a.	n = 246	171	59	1	3	12
13b.	n = 234	138	60	6	3	27
13c.	n = 235	129	73	4	2	27
13d.	n = 238	134	70	5	4	25