

en

Table 1. Number of respondents for:

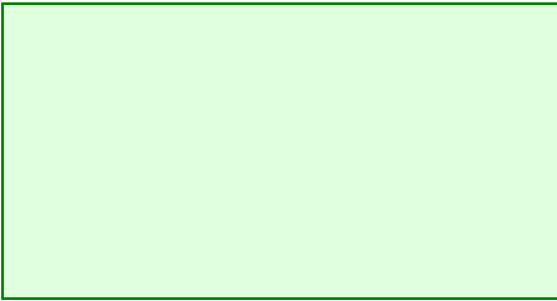
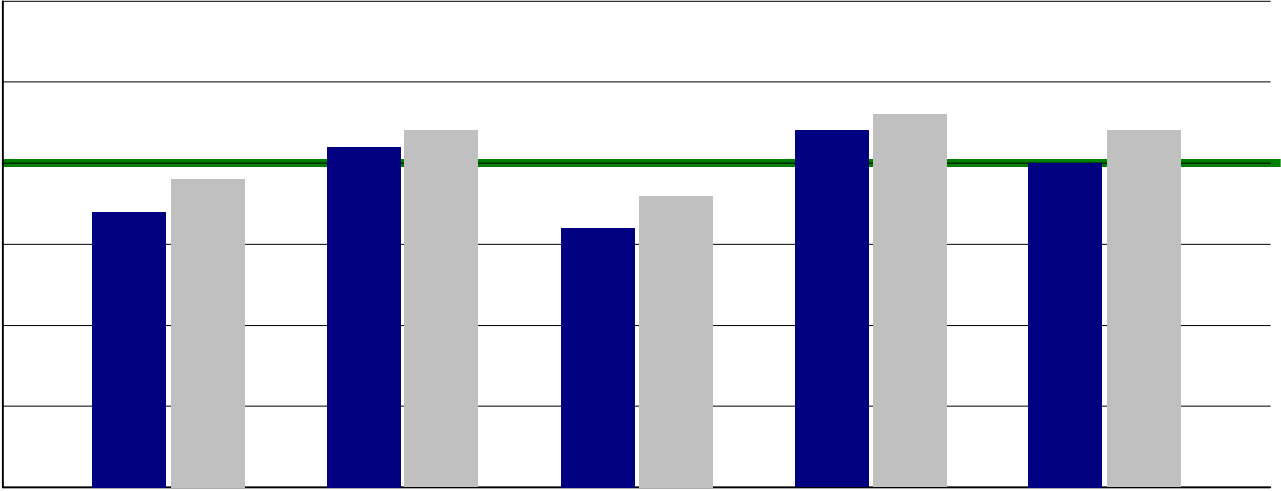
---

---

---

---

---





---

Student engagement	Lamar			All Middle Schools 2010-2011
	2008-2009	2009-2010	2010-2011	

Academic self-confidence	Lamar			All Middle Schools 2010-2011
	2008-2009	2009-2010	2010-2011	

Teacher expectations	Lamar		All Middle Schools 2010-2011
	2008-2009	2009-2010	

37. I will go to college after high school.	Lamar			All Middle Schools 2010-2011
	2008-2009	2009-2010	2010-2011	