



## 2006-2007 AISD Parent Survey Results

### Johnson High School

The following report contains the results of the 2006-2007 AISD Parent Survey for your campus and all AISD schools at your level. The first section of this report provides a comparison of the campus demographics and the demographics reported by parents who responded to the survey from your campus. The next section describes the percentages of parents selecting specific responses for each survey item, and the final section indicates the actual number of parents who selected each response option. Campus survey results should be examined for areas of strength and opportunities for improvement. Results for all AISD schools at your level and results for your campus from 2005-2006 are presented to provide references for comparison. Please note that due to differences in response rates by campus, ranging from 0.1% to 21.36%, district level results are more influenced by some campuses than others.

**Note: Campus data in this report should be interpreted with caution due to the low response rate.**

**How many parents responded to the survey in 2005-2006 and 2006-2007, and how does this compare to the number of students in the population each year?**

	Campus	District EL	District MS	District HS
<b># of Parents Responding in 2005-2006</b>	54	12,137	2,007	2,700
<b># of Students in 2005-2006</b>	1,666	44,827	15,624	20,081
<i>Ratio of Parent Respondents to Students, 2005-2006</i>	<b>3.2%</b>	<b>24.3%</b>	<b>11.5%</b>	<b>10.4%</b>
<b># of Parents Responding in 2006-2007</b>	3	11,812	1,354	1,426
<b># of Students in 2006-2007</b>	908	45,431	15,790	20,279
<i>Ratio of Parent Respondents to Students, 2006-2007</i>	<b>0.3%</b>	<b>26%</b>	<b>8.6%</b>	<b>7%</b>

**What did parents report as their child's ethnicity, and how does this compare to the ethnic distribution of the student population?**

Ethnicity	% of Students, as Reported by Campus Parent Respondents	% of Students in Campus Population
African American	50.0%	51.3%
Asian	0.0%	0.4%
Hispanic	50.0%	46.7%
Native American	0.0%	0.0%
White	0.0%	1.5%

**What did parents report as their child's grade, and how does this compare to the grade level distribution of the student population?**

<b>Grade</b>	<b>% of Students, as Reported by Campus Parent Respondents</b>	<b>% of Students in Campus Population</b>
<b>6th</b>	N/A	N/A
<b>7th</b>	N/A	N/A
<b>8th</b>	N/A	N/A
<b>9th</b>	0.0%	34.1%
<b>10th</b>	50.0%	25.4%
<b>11th</b>	50.0%	20.5%
<b>12th</b>	0.0%	19.9%

Note: Student population data are based on Fall PEIMS data submitted by the district to TEA, and may differ from the official AEIS report.

**USING THE RESULTS OF THE AISD PARENT SURVEY**

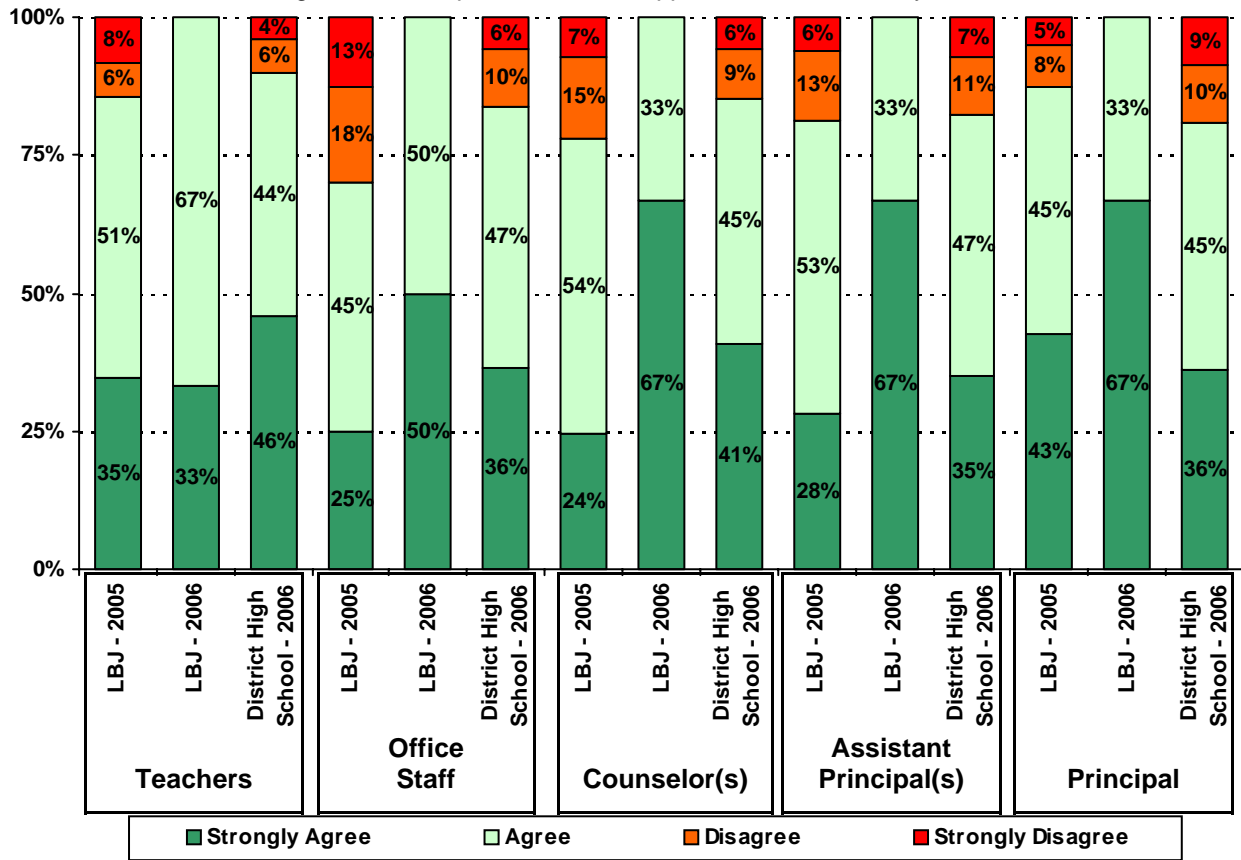
Each survey item is presented below, followed by a bar graph containing your school's results for two years and this year's results for all campuses at your level. You will be able to identify areas in which your school's results have changed over time, and you will be able to compare the responses of your school's parents to those of parents at your level district-wide.

Please examine your results to determine areas of strength and opportunities for improvement. Areas of strength can be identified by large percentages of parents who "Strongly Agree" or "Agree" with a statement. Opportunities for improvement can be identified by large percentages of parents who "Disagree" or "Strongly Disagree" with a statement. In addition, please look for patterns in which one staff category consistently receives more positive or negative responses than other staff categories. This will help you to identify opportunities for praise and areas in which training may be necessary. District responses for all schools at your level are also provided for comparison with 2006-2007 responses from your school. If your campus percentages are very different from the percentages reported by parents district-wide, please consider potential reasons for discrepancies.

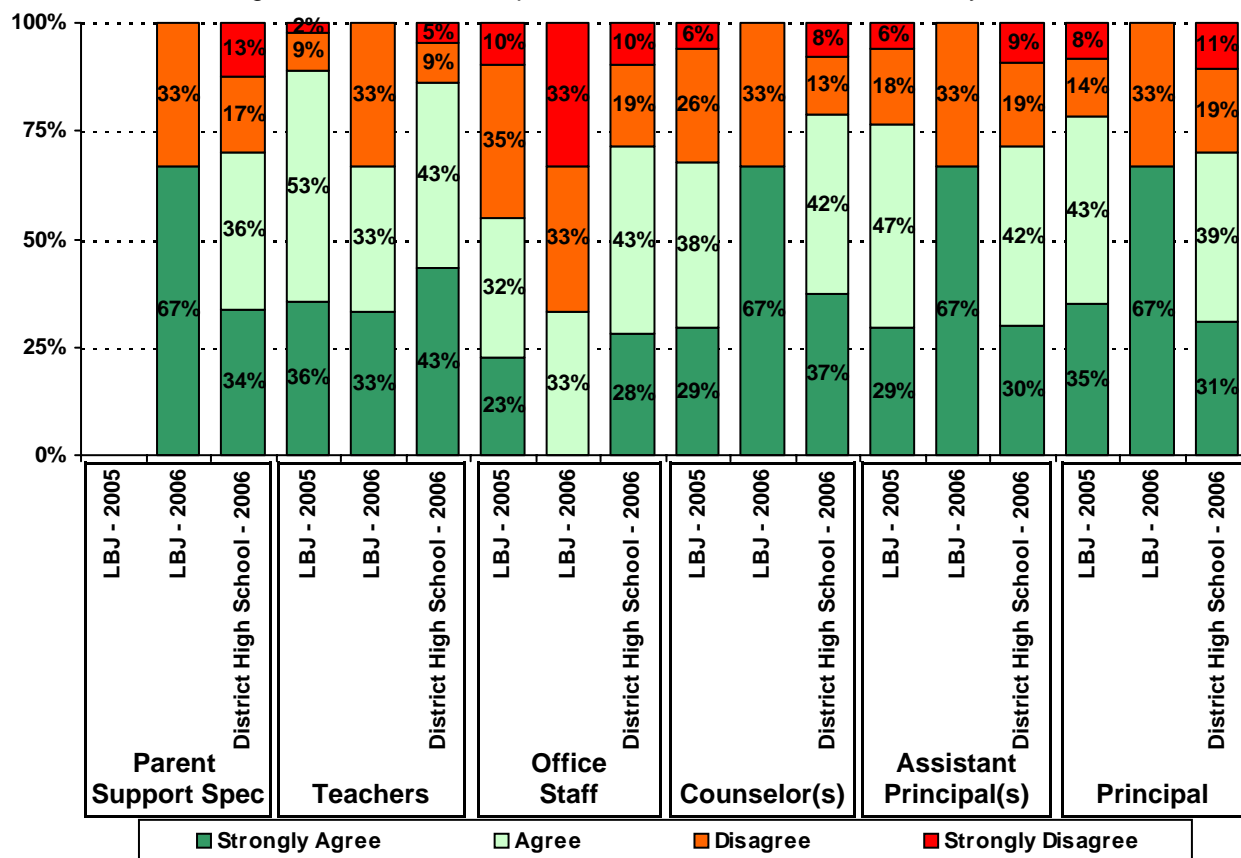
Longitudinal data are provided, when available. It is important to look at the responses from year to year to determine whether there are any areas in which percentages have changed by more than a few points. Keep in mind that when response rates are low, the percentages may appear to fluctuate more without necessarily signaling a serious shift in perception. Also, think about any changes in campus policies and practices that may have resulted in positive or negative changes. How can campus staff continue to support the positive changes? How might your staff address any

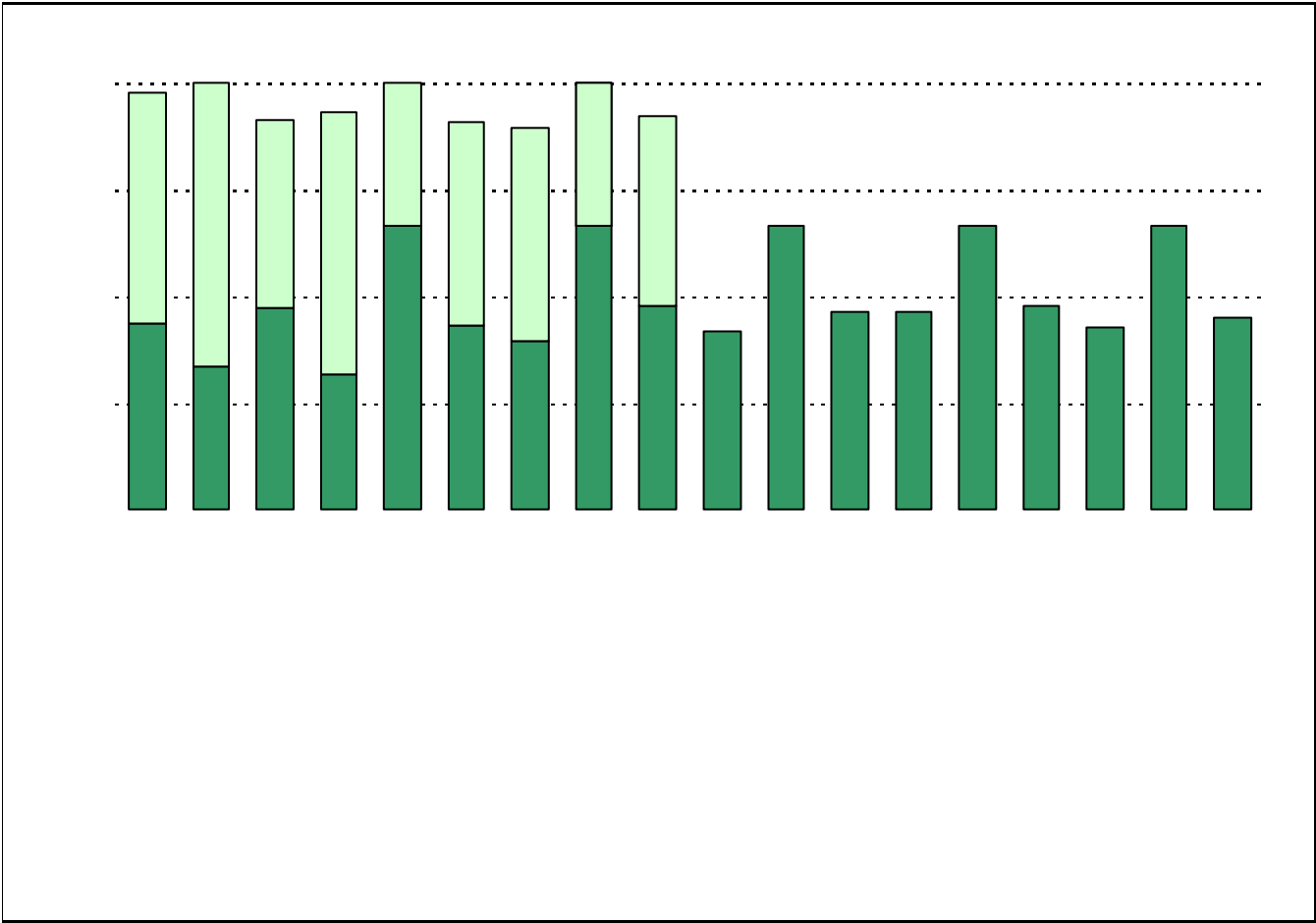


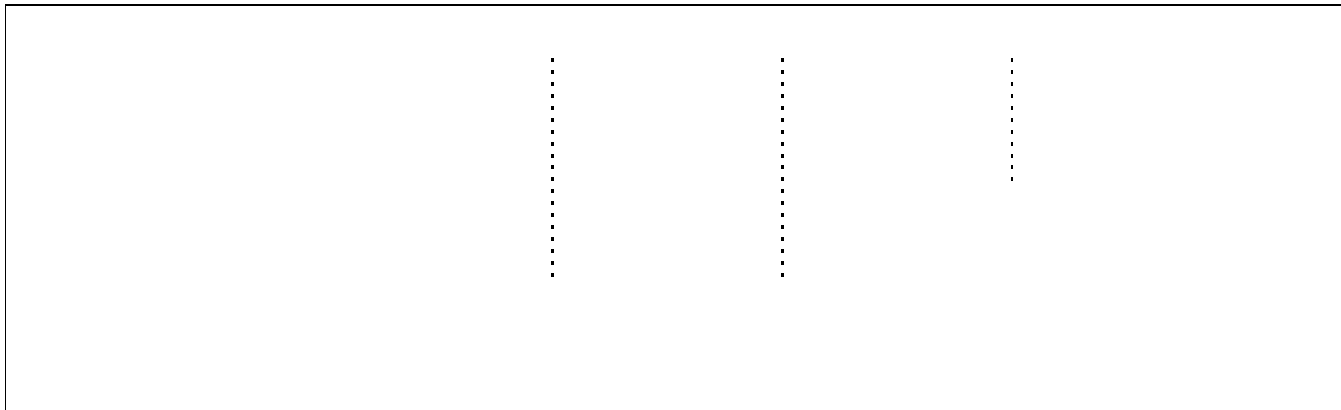
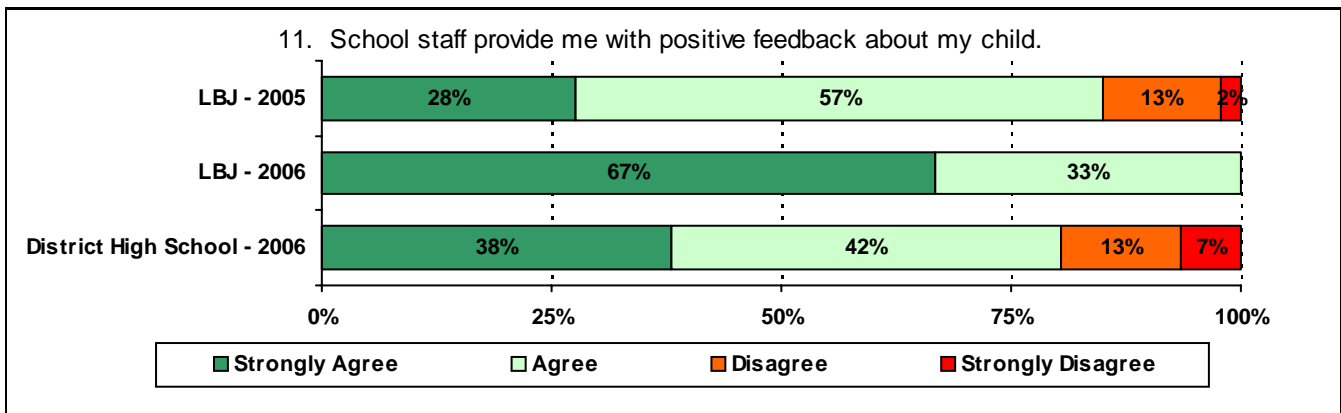
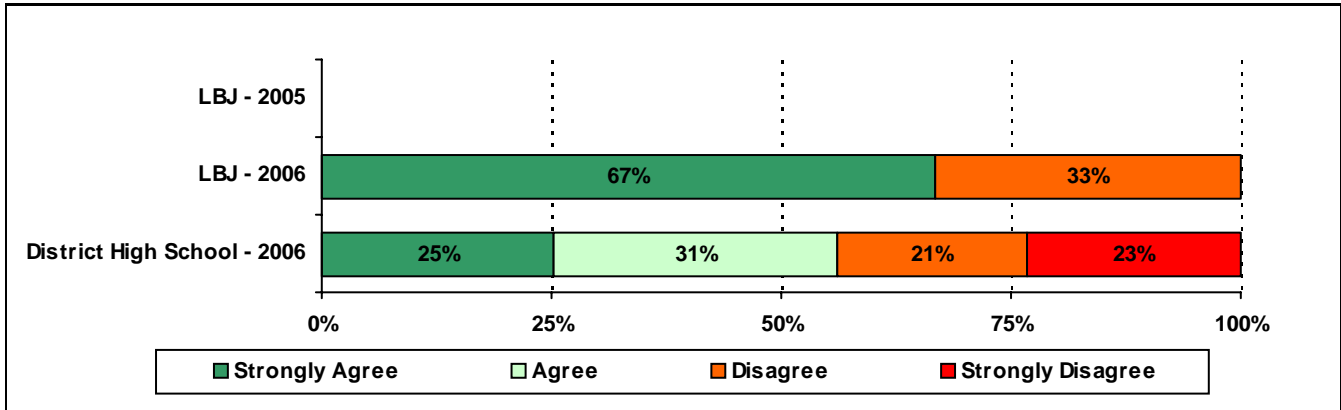
6. The following school staff provide me with opportunities for two-way communication.

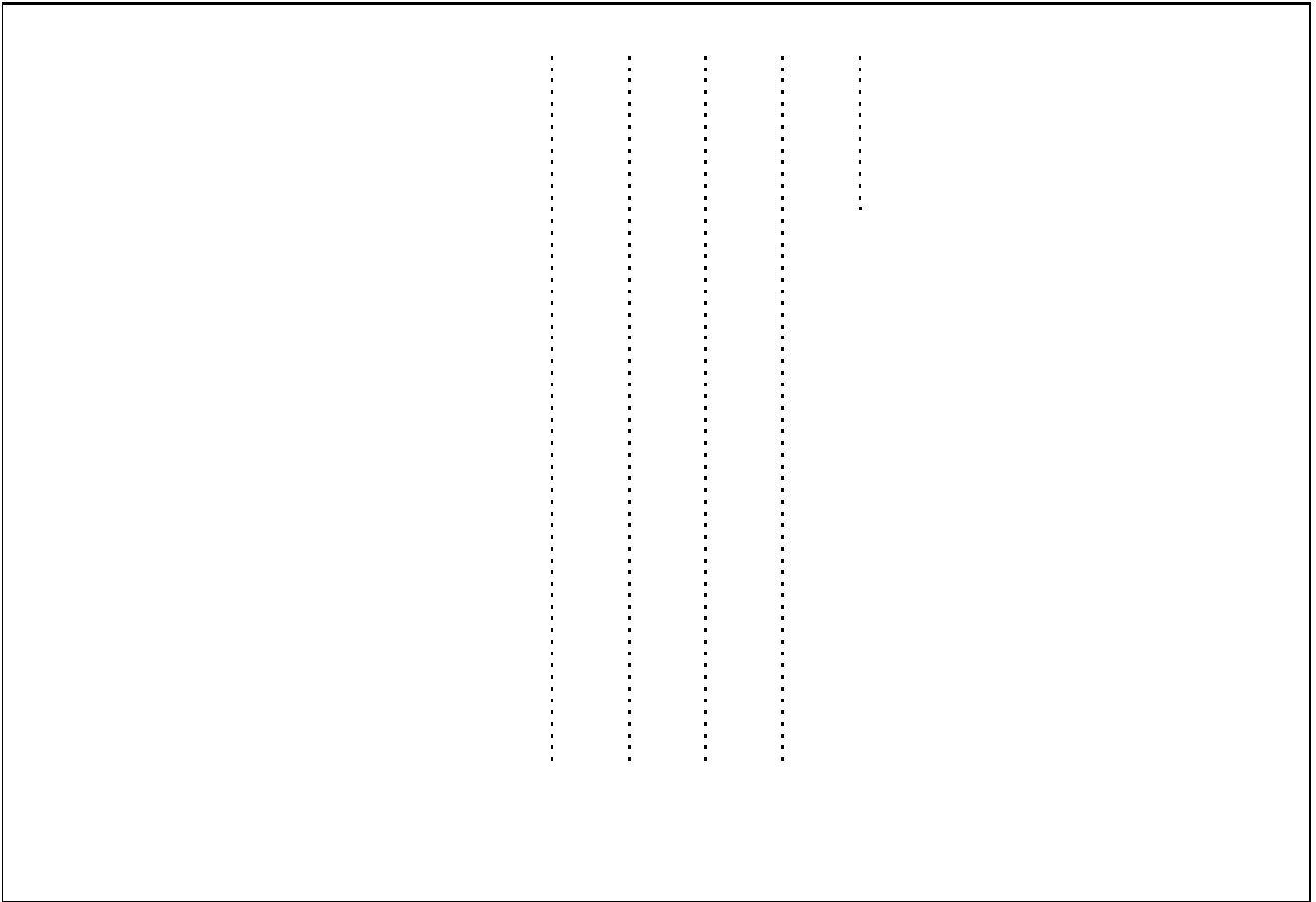


7. The following school staff have helped me to become more involved in my child's education.









.....

.....

.....

.....

.....

.....

.....

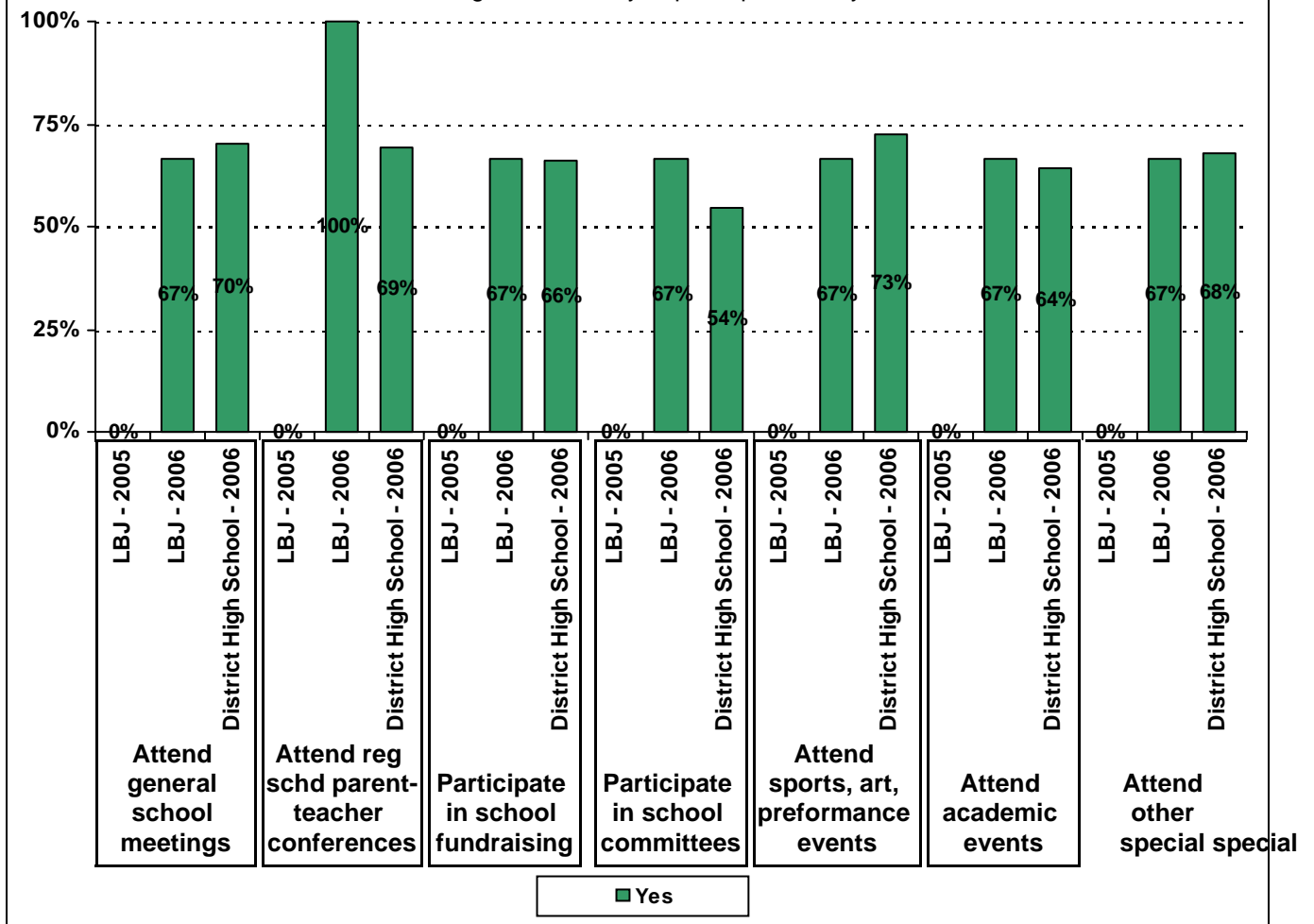
.....

.....

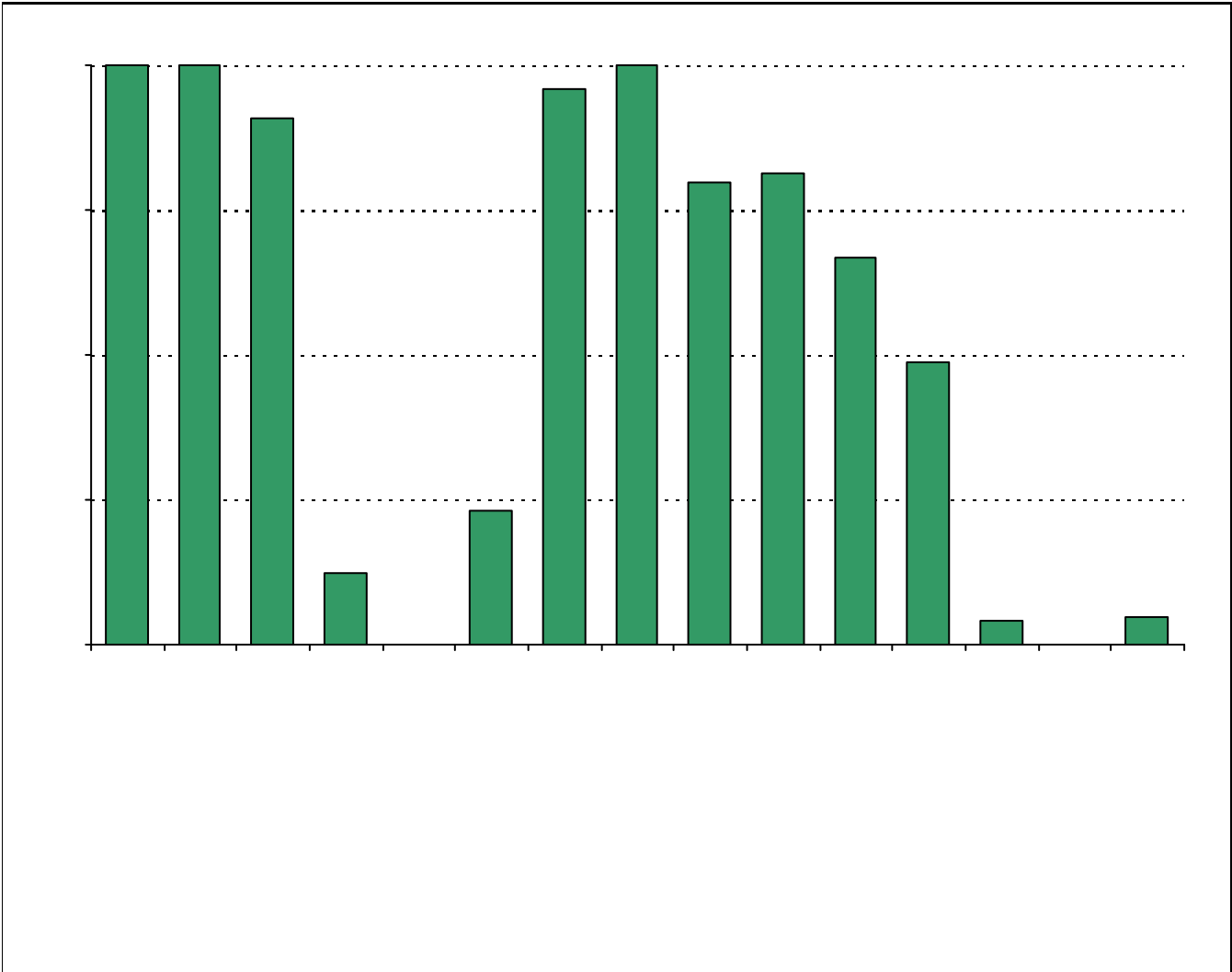


**Required**

19. Which of the following activities do you participate in at your child's school:\*



\* Item(s) #17, #18, #19 added to the survey in 2006



1 1 0 1 0

### Item Response Details

Number of Johnson High School Parent Responses, PTc(Str)8.9(o)-01 S1 g1044 Tc0 Tw(12)174.8(0)-305.9(0)

	Strongly Agree	Agree	Disagree	Strongly Disagree	Don't Know/NA
<b>3a. 196.38-1 T n = 3</b>	2	1	0	0	0
<b>3b. n = 3</b>	2	1	0	0	0
	2	1	0	0	0
<b>3d. n = 3</b>	1	1	0	1	0
	1	2	0	0	0

Number of Johnson High School Parent Responses, by Response Option  
(Continued)

		Strongly Agree	Agree	Disagree	Strongly Disagree	Don't Know/NA
<b>13a.</b>	<b>n = 3</b>	2	1	0	0	0
<b>13b.</b>	<b>n = 3</b>	2	0	1	0	0
<b>13c.</b>	<b>n = 3</b>	1	0	2	0	0
<b>14a.</b>	<b>n = 3</b>	1	1	1	0	0
<b>14b.</b>	<b>n = 3</b>	2	1	0	0	0
<b>14c.</b>	<b>n = 3</b>	1	1	0	0	1
<b>15a.</b>	<b>n = 3</b>	1	2	0	0	0
<b>15b.</b>	<b>n = 3</b>	1	1	1	0	0
<b>15c.</b>	<b>n = 3</b>	1	1	1	0	0
<b>15d.</b>	<b>n = 3</b>	2	1	0	0	0
<b>15e.</b>	<b>n = 3</b>	1	2	0	0	0
<b>20.</b>	<b>n = 3</b>	<p><i>Item 20 did not use the "Strongly Agree" to "Strongly Disagree" scale. Numbers below reflect the number of parents selecting each goal. These numbers will not sum to the total number of</i></p>				