

	Percentage of Enrolled Seniors Responding ²			
	Class of 2004	Class of 2005	Class of 2006	Class of 2007
LBJ--COMP	**	**	**	66.9%
ALL HIGH SCHOOLS	81.5%	85.3%	86.0%	82.0%

INDIVIDUAL ITEM R

Item 1. What is the ONE thing that you especially want the administration of AISD to know.

Themes from this open-ended comment section have been identified and summarized each year. Generally, comments remain consistent from year to year; commonly identified themes expressed by the Class of 2007 include:

- **Respect.** Students continued to express a desire to be treated with respect and fairness by school staff, including administrators, office/attendance staff, hall monitors, security and parking lot personnel. Many felt that they were treated with suspicion and disrespect as a result of the behavior of other students. Students also were concerned that some rules (e.g., parking, dress code, off-campus lunch) were enforced inconsistently.
- **Academics.** Many students wished they had been told about the importance of good grades and rigorous coursework starting as early as middle school. They also questioned the quality of instruction during High school. Students stressed the importance of learning about college requirements and the college application process earlier in their high school careers. Negative comments about TAKS also were widespread.
- **Attendance and Exemption Policies.** Students particularly were upset about the elimination of final exam exemptions, and many comments indicated that students are more likely to skip classes now that attendance is not used for final exam exemptions. Students also expressed dissatisfaction with tardy policies, particularly those that result in arriving even later to class.
- **Dress code.** Students again expressed dissatisfaction with dress codes, and did not believe that style of dress interferes with the learning process. Many would have liked to wear hats.
- **Food.** Students at many campuses were unhappy with the cafeteria food and wished for better tasting, healthier options. Some also complained about losing vending machines.
- **Facilities.** Students were disheartened by lack of attention to school facilities, particularly the cleanliness of restrooms. Many students commented on the lack of towels and soap.

SPECIFIC COMMENTS FROM THE CLASS OF 2007 FROM LBJ--COMPREHENSIVE HIGH SCHOOL³:

- Students made 76 total comments; 56.5% of comments were positive, 42.5% were negative.
- The most frequently mentioned topics were *General Positive Comments* (positive comments about school or AISD with no particular topic mentioned), *Advising*, and *Academics* (especially negative comments about TAKS).
- **Praise for Project ADVANCE.** Students expressed gratitude for Project ADVANCE. Several students also wrote about the importance of the AVID program and their desire to see it continue at LBJ.

[name removed] has been one of the biggest source of support and as well as a huge help to over come many personal problems! There are many teachers that i must take off my hat to them because they have helped quiet the amount!

I wanted to say that the coulselor from project advance program [name removed] has helped me alot, and if it wasn't for her I would probably be lost and wouldn't have accomplished what I have this year. Also that the AVID program should not be faced off, because this program inspired me to think about graduating from high school and going to a 4-year college.

Project Advance has helped me a lot during my senior year and now I feel ready and well prepared for college.

³ All student quotes are taken directly from the survey, as typed in by the students. Examples are given to illustrate common themes. A complete list of student comments can be found in the Appendix.

That [name removed] has help me out a lot and many other students. She a great advisors, and focus me on college and all my options.

- **Advisory periods are a waste of time.** Students commented on their dislike of Advisory periods as a “waste of time” and a time to “hang out and slack.”

Eliminate advisory because it's just a time to hang out, we dont actually do what we are supposed to do.

Get rid of Advisory and i think that they should put like benches outside, like the ones that in the parks so kids can eat more comfortable outside :)

Item 2. Within a year after graduating from high school, what do you plan to do?

	2004-2005		2005-2006		2006-2007	
	ALL HS	LBJ-- COMP	ALL HS	LBJ-- COMP	ALL HS	LBJ-- COMP
Continue my education	74.6%	**	84.0%	74.6%	89.0%	90.8%
Travel	11.6%	**	13.1%	7.1%	18.3%	13.4%
Full-time parent	2.6%	**	1.8%	3.2%	2.2%	0.8%
Military	3.3%	**	3.4%	3.2%	2.6%	5.0%
Work full-time	14.0%	**	12.3%	8.7%	13.2%	17.6%
Work part-time	32.4%	**	30.5%	27.8%	35.5%	37.8%
No plans	9.2%	**	8.0%	9.5%	5.6%	1.7%

Item 5. In which of the following extra-curricular activities did you participate while in high school?

Activity	2004-2005		2005-2006		2006-2007	
	ALL HS	LBJ--COMP	ALL HS	LBJ--COMP	ALL HS	LBJ--COMP
Music	31.7%	**	25.1%	18.3%	28.0%	21.0%
Theater/Drama	15.5%	**	12.1%	4.8%	12.0%	12.6%
Dance	16.3%	**	13.2%	9.5%	13.3%	9.2%
Sports	56.1%	**	48.0%	57.9%	50.1%	26.9%
UIL Academic Competition	13.0%	**	10.9%	6.3%	10.0%	5.0%
Journalism	12.5%	**	10.0%	8.7%	9.7%	4.2%
Speech/Debate	9.3%	**	7.3%	1.6%	8.0%	5.0%

Note: Respondents may select more than one option; percentages will not total 100%.

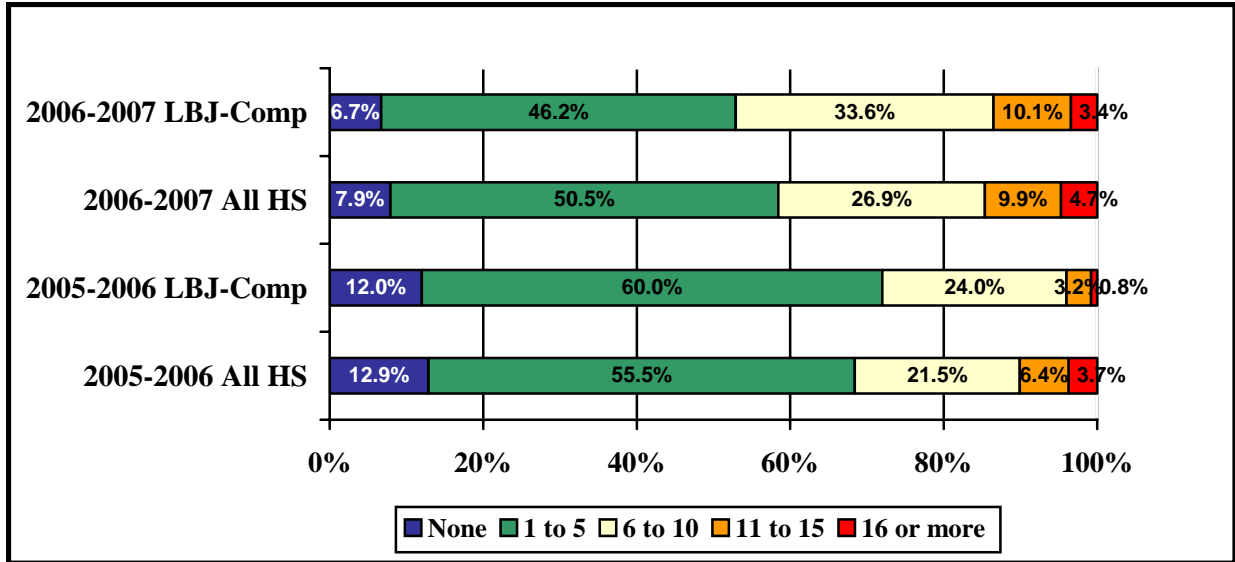
Item 7. In which of the following activities did you participate outside of school during your senior year?

Activity	2004-2005		2005-2006		2006-2007	
	ALL HS	LBJ--COMP	ALL HS	LBJ--COMP	ALL HS	LBJ--COMP
Sports	37.4%	**	32.6%	35.7%	31.8%	26.9%
Art/Music/Performance	29.8%	**	24.1%	20.6%	23.3%	15.1%
Community Service	54.4%	**		36.5%	41.0%	39.5%
Environmental Projects	17.0%	**	13.6%	9.5%	12.9%	11.8%
Other Organizations	17.0%	**				

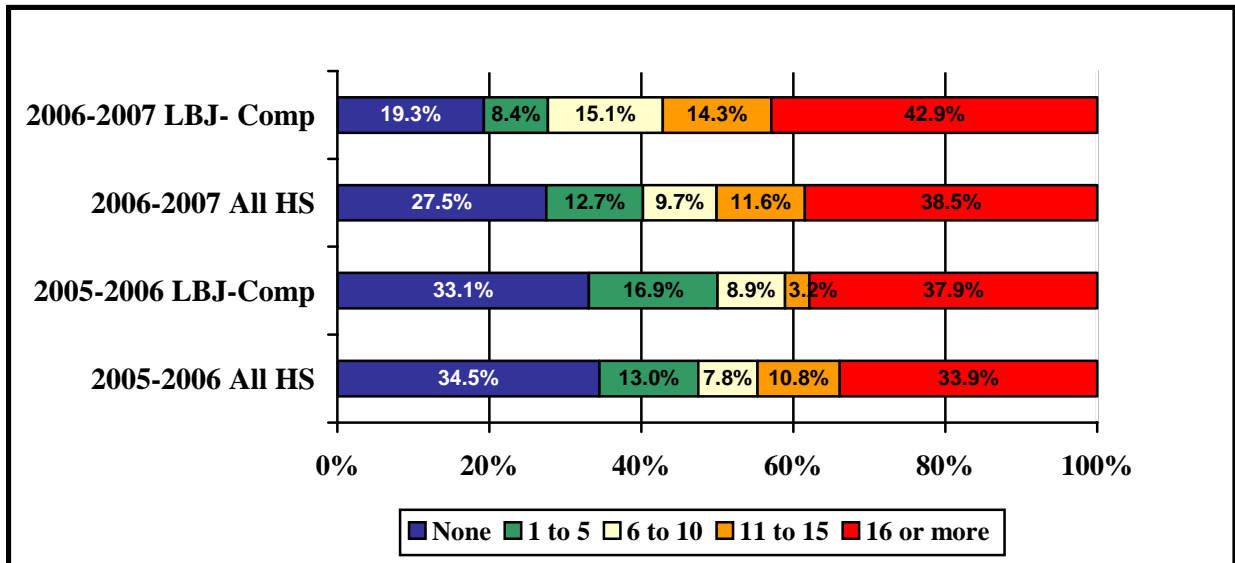
Item 8. Here is a list of community organizations found in and around Austin. Please indicate which of them, if any, you have participated in while in High School.

Organization	AKINS	ANDERSON	AUSTIN	BOWIE	CROCKETT	GARZA	INTERNATIONAL	JOHNSTON	LANIER	LBJ COMP	LBJ MAGNET	MCCALLUM	REAGAN	TRAVIS	TOTAL STUDENTS
4-H															

Item 9. Thinking back on your years in high school, how many hours per week did you typically spend studying, doing research, or completing homework assignments OUTSIDE of class?



Item 10. During your senior year, approximately how many hours per week have you been employed?



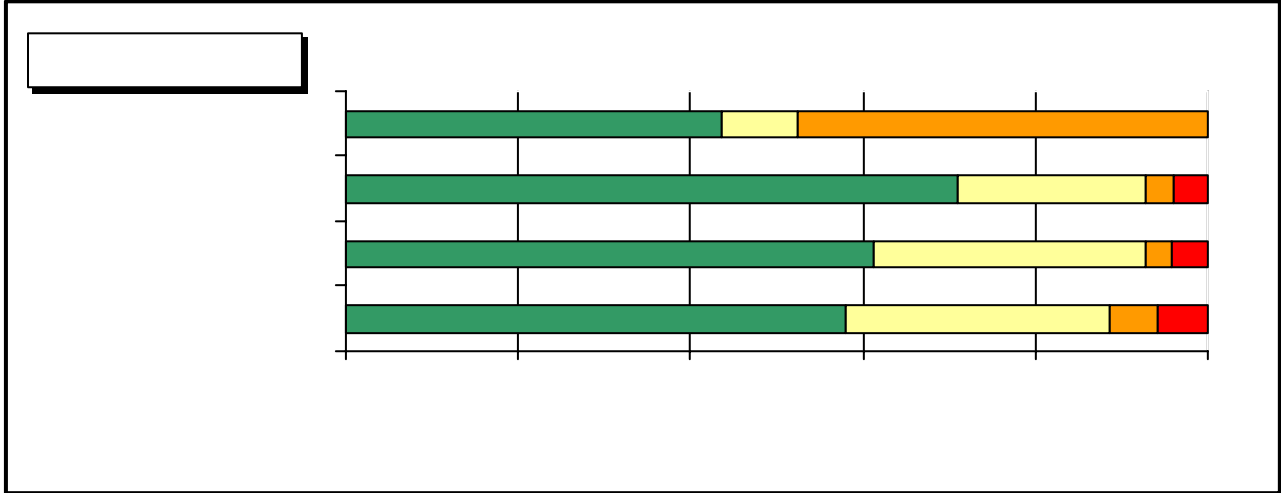
Item 13. How frequently, on average, did you use a computer during or outside of class for your most recent high school classes in each of the subjects listed below?

	2005-2006		2006-2007	
	ALL HS	LBJ--COMP	ALL HS	LBJ--COMP
Math	1.4	1.5	1.5	1.5
Science	1.8	1.7	1.9	1.9
English	2.5	2.5	2.5	2.6
Social Studies	2.0	2.2	2.1	2.2

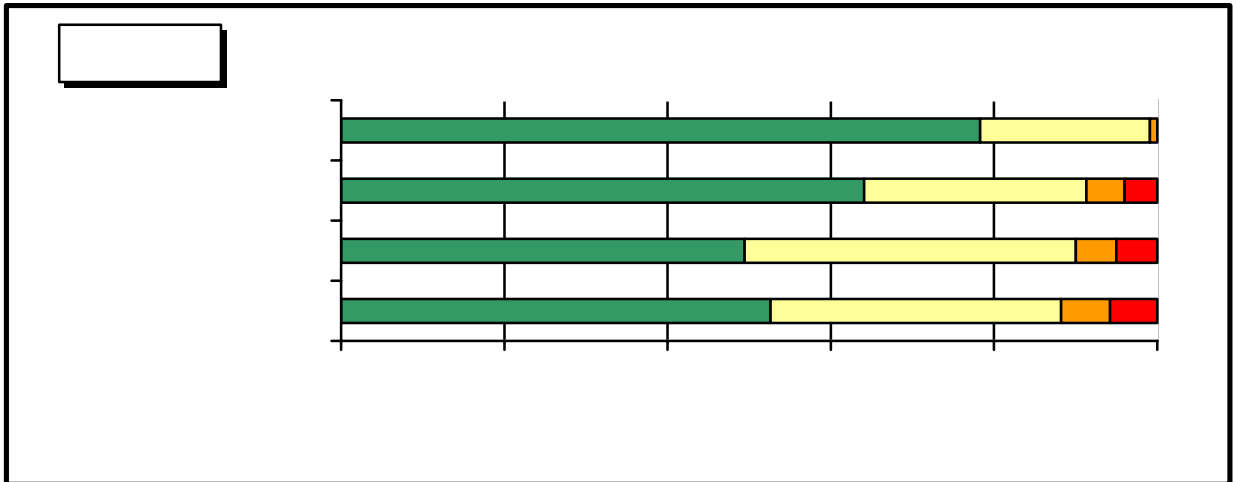
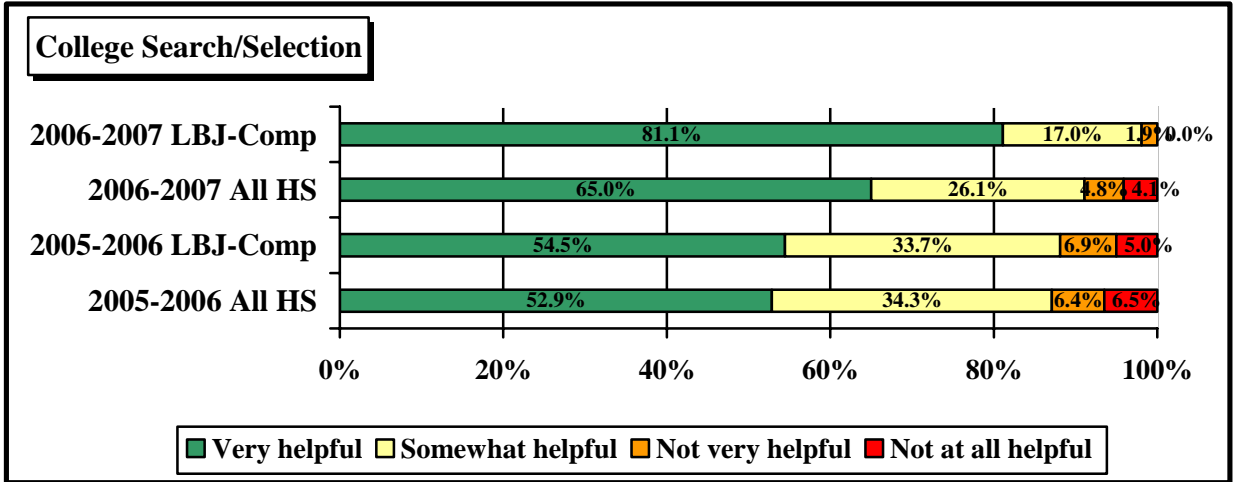
Note: Responses can range from 1 (never) to 4 (daily).

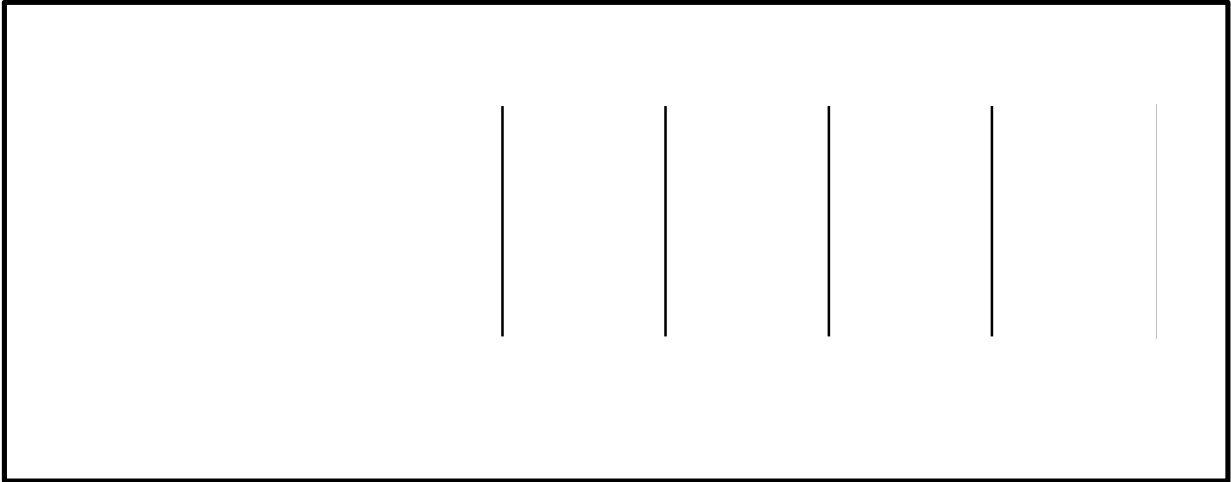
Item 16.

Item 19. *How helpful was your Project ADVANCE/College Advisor in the following types of meetings?*

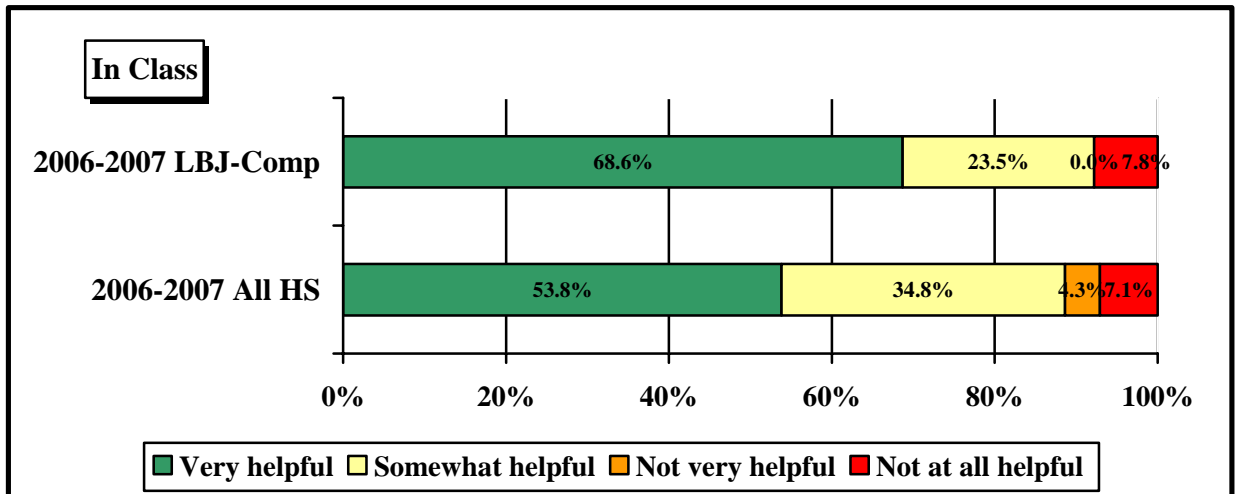
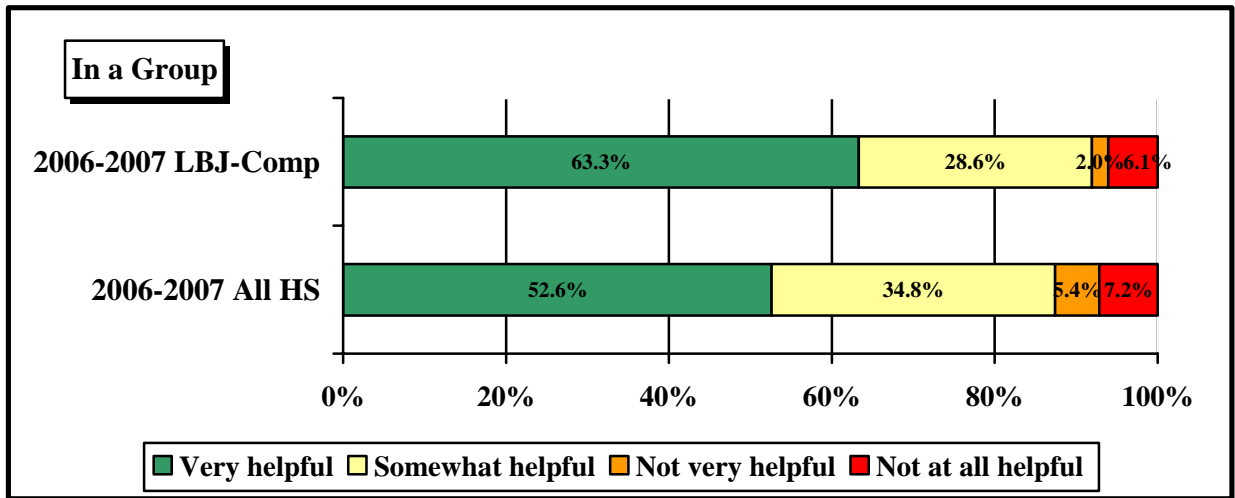
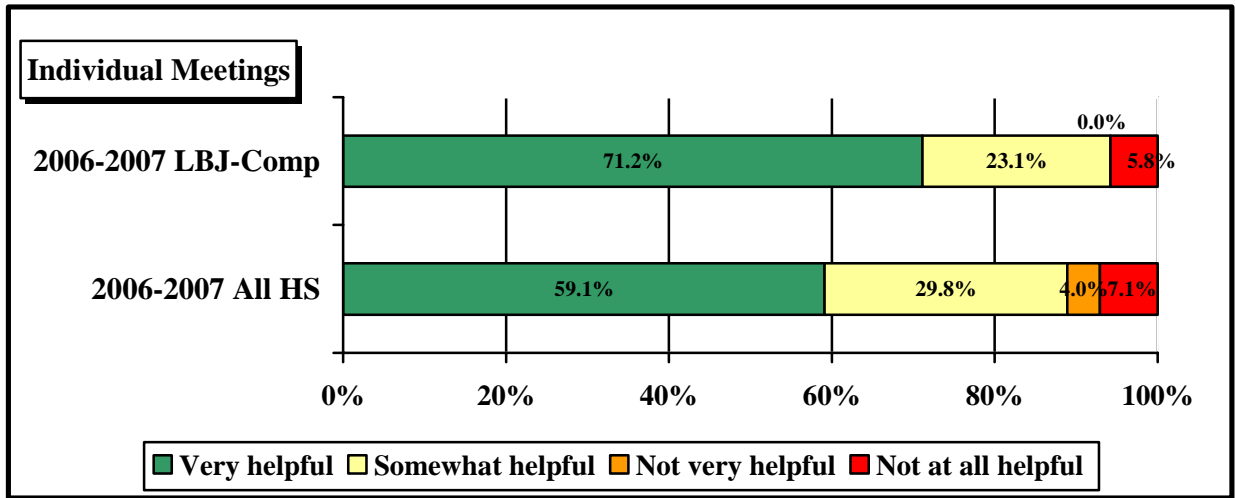


Item 20. How helpful was your Project ADVANCE Facilitator/College Advisor with the following processes?

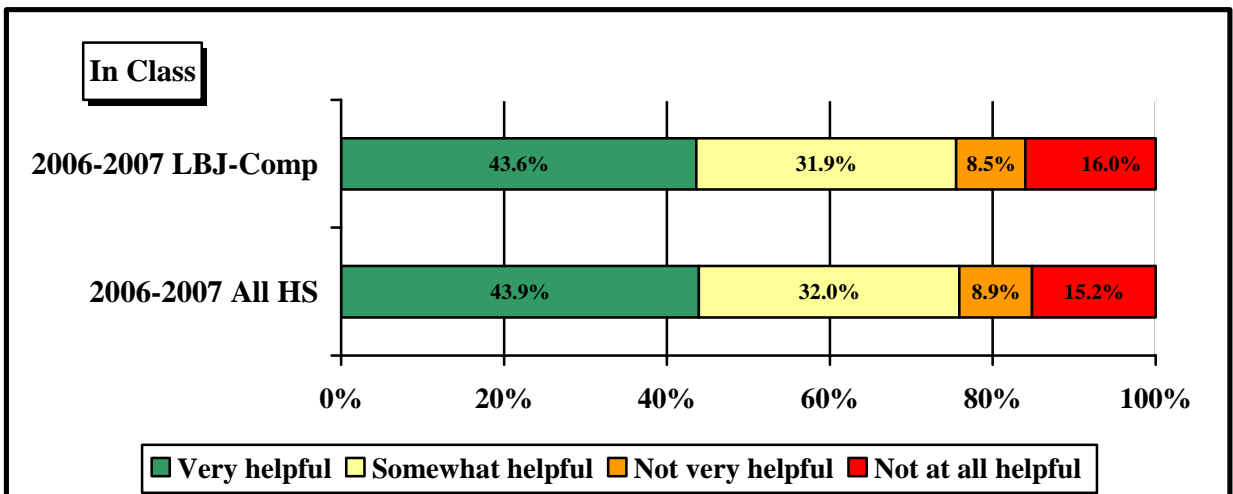
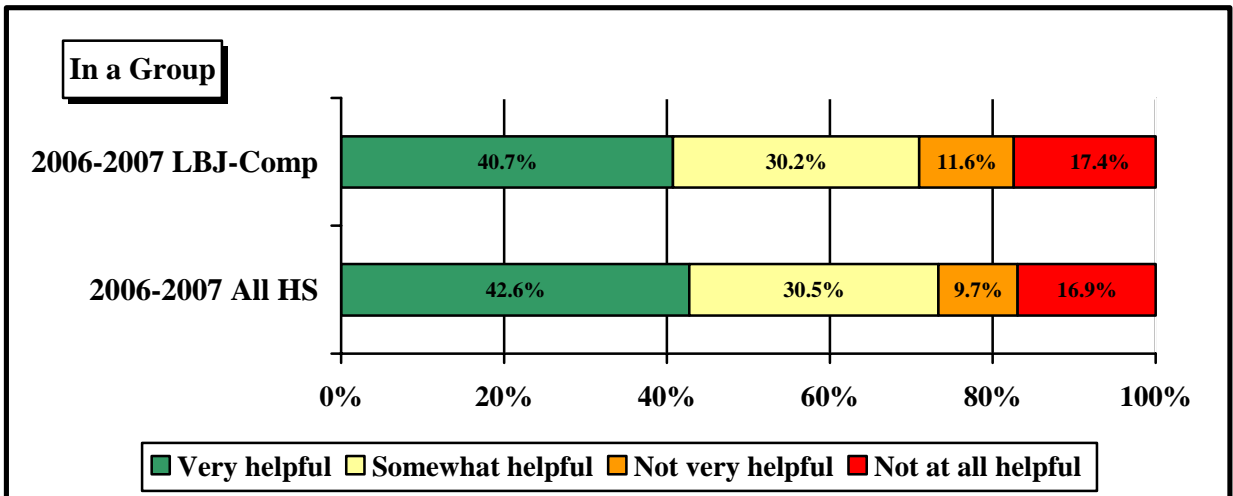
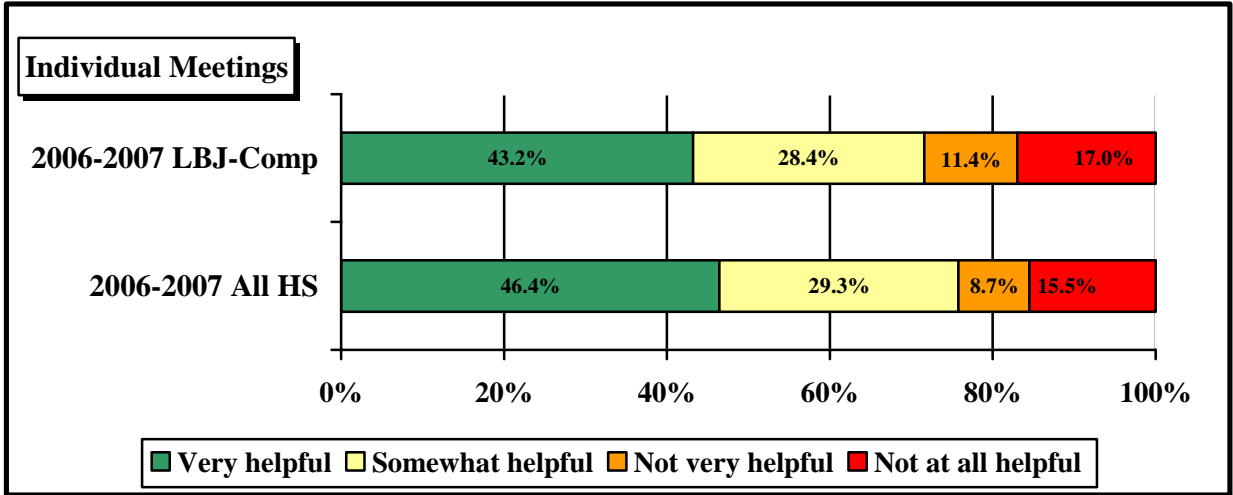




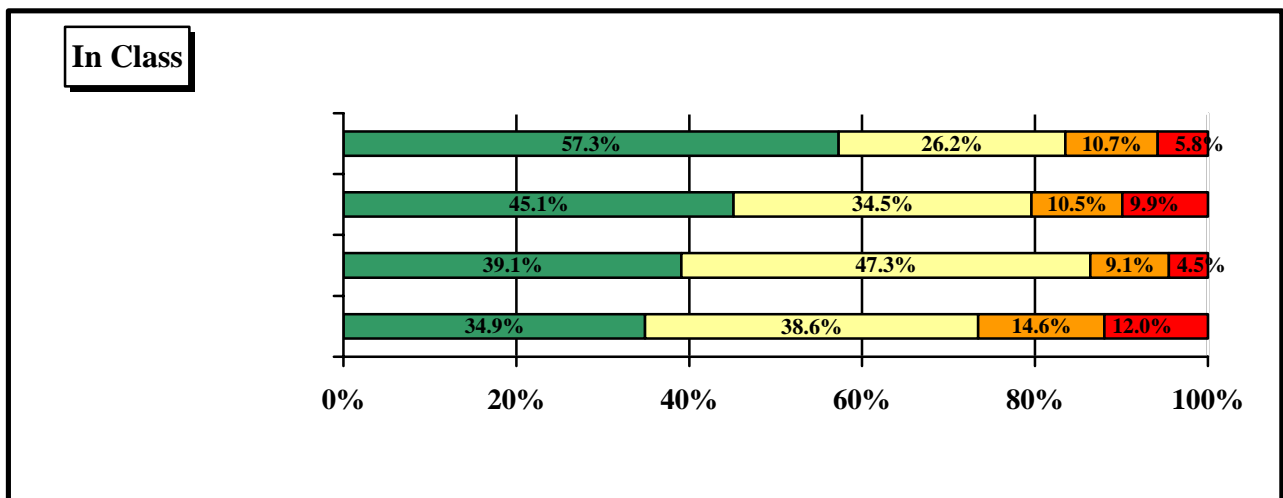
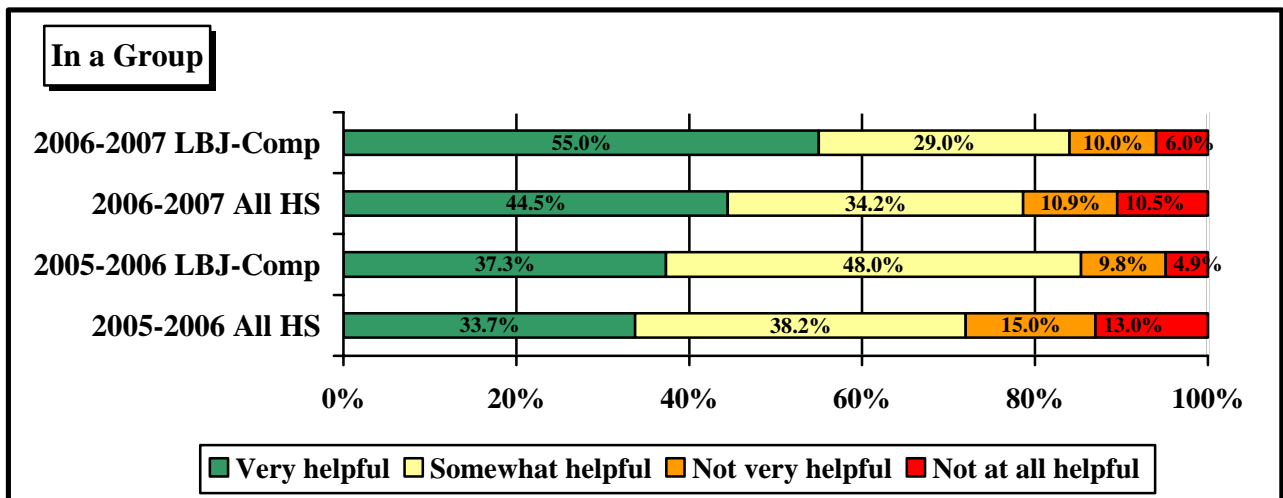
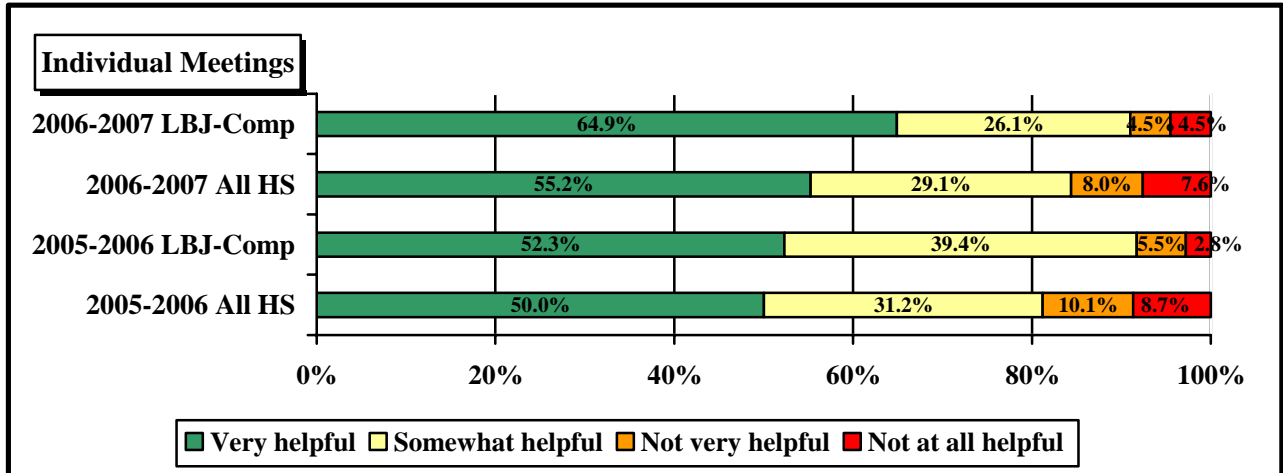
Item 21. How helpful was your Advocate in the following types of meetings? (Skip this question if you do not have an Advocate).



Item 22. How helpful was your Advisory Teacher in the following types of meetings? (Skip this question if you do not have an Advisory Teacher).



Item 23. How helpful was your School Counselor in the following types of meetings?



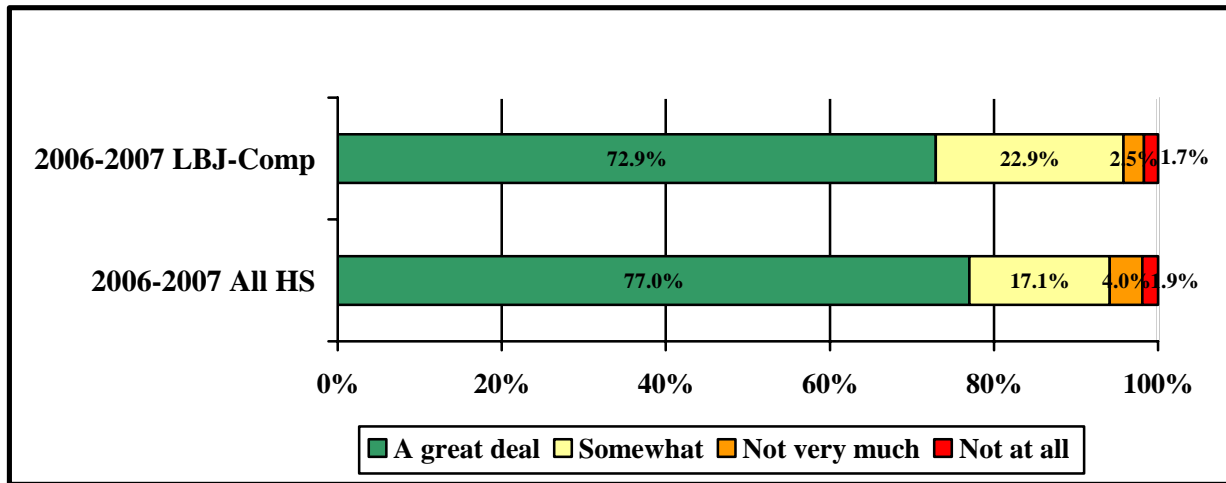
Item 24. For which of the following issues did you meet with a school counselor?

Issue	2005-2006		2006-2007	
	ALL HS	LBJ--COMP	ALL HS	LBJ--COMP
Scheduling	81.5%	73.8%	76.7%	77.3%
Course selection & placement	60.1%	55.6%	56.2%	52.9%
Graduation plans	52.3%	60.3%	53.0%	60.5%
4 year plan	21.5%	31.0%	21.2%	22.7%
Graduation credit verification	41.0%	50.8%	39.1%	44.5%
Testing interpretation	15.6%	19.8%	14.1%	14.3%
Career information	15.4%	19.0%	15.6%	19.3%
College information & applications	37.7%	41.3%	36.5%	34.5%
Resumes	**	**	6.5%	5.9%
Financial aid information/application	17.9%	32.5%	19.9%	33.6%
Scholarship information/application	20.6%	29.4%	22.5%	24.4%
Writing college essays	**	**	9.9%	17.6%
Conflict resolution	11.5%	15.1%	10.4%	13.4%
Personal / family issues	11.4%	10.3%	12.2%	19.3%
Parent conference	8.5%	5.6%	7.7%	8.4%
Teacher conference	5.5%	5.6%	5.4%	5.0%
Other	16.3%	20.6%	10.1%	10.1%

Notes: In 2005-2006, “Resumes/college essays” were one category. 11% of all HS students said that they visited with a counselor for this purpose.

Respondents may select more than one option; percentages will not total 100%.

Item 25. To what extent do your parents / family support your plans for after high school?+



Note: +In previous years, this item was worded, “To what extent did your parents / family encourage you to participate in post-secondary education?”

Item 26. To what extent were your parents involved in the following school-related things?

	2005-2006		2006-2007	
	ALL HS	LBJ-- COMP	ALL HS	LBJ-- COMP
Working with you on homework or school projects	2.8	2.8	2.8	3.0
Volunteering at your school	2.3	2.2	2.3	2.4

Item 28. How far did your parents go in school? Indicate your mother and father's highest level of education.

Education Level	2005-2006*		2006-2007			
	MOTHER		MOTHER		FATHER	
	ALL HS	LBJ-- COMP	ALL HS	LBJ-- COMP	ALL HS	LBJ-- COMP
Did not finish high school	16.7%	25.4%	17.4%	28.0%	18.5%	29.3%
Graduated from high school or earned a GED	20.2%	31.0%	22.1%	24.6%	19.6%	34.5%
Attended a 2-yr community/junior college or vocational/technical school, but did not complete a degree	7.9%	14.3%	9.4%	20.3%	6.9%	12.9%
Graduated from a 2-yr community/junior college or vocational/technical school	4.4%	3.2%	5.4%	5.1%	4.6%	2.6%
Attended a 4-yr college, but did not complete a degree	7.3%	4.8%	7.1%	4.2%	6.6%	6.0%
Graduated from college	19.3%	5.6%	19.8%	5.1%	17.5%	2.6%
Completed a Master's degree or equivalent	10.3%	2.4%	10.6%	3.4%	12.1%	1.7%
Completed a Ph.D., M.D., or other advanced professional degree	3.3%	2.4%	3.1%	3.4%	5.4%	0.0%
Don't Know or Does Not Apply	9.3%	7.9%	5.2%	5.9%	8.6%	10.3%

*Note: Father was added in 2007.

Item 29. Thinking back, at what time in your life did you start thinking about college as a possibility after high school?

Time	2005-2006		2006-2007	
	All HS	LBJ-- COMP	All HS	LBJ-- COMP
As long as I can remember	39.6%	26.2%	39.1%	29.9%
When I was a child	13.0%	17.2%	12.0%	12.8%

Items 30-35. To which of the following have you submitted applications; to which of the following have you already been accepted?

	2004-2005		Applied 2005-2006		2006-2007	
	All HS	LBJ-- COMP	All HS	LBJ-- COMP	All HS	LBJ-- COMP
2-yr college	25.4%	**	54.5%	59.2%	49.8%	55.5%
4-yr college	59.9%	**	68.0%	76.8%	69.1%	82.4%
Business/technical/ vocational school	8.1%	**	14.7%	20.0%	13.8%	16.0%

	2004-2005		Accepted 2005-2006		2006-2007	
	All HS	LBJ-- COMP	All HS	LBJ-- COMP	All HS	LBJ-- COMP
2-yr college	21.1%	**	45.2%	41.7%	44.4%	48.7%
4-yr college	50.6%	**	56.5%	51.2%	59.0%	71.4%
Business/technical/ vocational school	6.6%	**	13.7%	9.5%	17.3%	20.2%

Note: For comparison purposes, these items were recoded to correspond with previous years' data. The questions as they appeared on the survey (in 2006 and 2007) were: *Please indicate how many schools in each category to which you have applied; please indicate how many schools to which you have already been accepted.*

Item 36. How did you prepare for continuing education? (Check all that apply)

	2004-2005		2005-2006		2006-2007	
	ALL HS	LBJ-- COMP	ALL HS	LBJ-- COMP	ALL HS	LBJ-- COMP
Took AP/IB class	48.7%	**	45.3%	36.5%	45.3%	43.7%
Visited campus	57.7%	**	54.6%	50.8%	44.0%	47.1%
Attended one or more college fairs	**	**	51.4%	61.9%	44.4%	67.2%
Anticipate completing the DAP	21.5%	**	20.2%	9.5%	20.4%	10.1%
Anticipate completing the RHSP	54.1%	**	34.2%	28.6%	30.5%	39.5%
Submitted financial aid form	46.6%	**	38.3%	34.9%	41.3%	57.1%
Submitted scholarship application	37.6%	**	31.8%	23.8%	30.8%	36.1%
Took PSAT	59.2%	**	56.7%	42.1%	57.9%	54.6%
Took entrance exam	77.9%	**	64.1%	52.4%	65.6%	62.2%
Took test prep class	**	**	40.1%	42.1%	38.2%	41.2%
Completed ACC course	23.3%	**	22.6%	15.1%	23.3%	19.3%
Submitted transcript	46.9%	**	45.1%	38.1%	40.3%	38.7%

Notes: Actual completion of the DAP or RHSP cannot be determined until the end of the school year.
Respondents may select more than one option; percentages will not total 100%.

Item 37. Within a year after graduating from high school, I am going to:

	2004-2005		2005-2006		2006-2007	
	ALL HS	LBJ--COMP	ALL HS	LBJ--COMP	ALL HS	LBJ--COMP
Attend a college or university for a postsecondary degree	71.8%	**	65.0%	58.7%	69.3%	69.7%
Attend a school or college for a business, technical, trade, or vocational certification	11.1%	**	20.6%	24.6%	19.1%	18.5%
Other	17.1%	**	14.4%	16.7%	11.6%	11.8%

For those students who plan to attend a school for postsecondary education or certification:

Item 38. Will you be the first person in your immediate family to attend college?

	2005-2006		2006-2007	
	ALL HS	LBJ--COMP	ALL HS	LBJ--COMP
“Yes”	27.9%	62.0%	29.1%	45.7%

Item 39. Which type of school ar

Item 40. Will you or your family be borrowing any money for your education after high school?

	2005-2006		2006-2007	
	ALL HS	LBJ--COMP	ALL HS	LBJ--COMP
Yes, Definitely	24.9%	16.5%	24.8%	19.0%
Yes, Probably	20.3%	20.4%	21.7%	29.5%
Maybe	20.9%	22.3%	22.0%	32.4%
Probably Not	12.1%	14.6%	12.2%	3.8%
Definitely Not	9.1%	7.8%	9.2%	6.7%
Don't Know	12.7%	18.4%	10.0%	8.6%

Item 41. How important is each of the following in choosing a college?

	2005-2006		2006-2007	
	ALL HS	LBJ--COMP	ALL HS	LBJ--COMP
College expenses	**	**	2.4	2.5
Availability of financial aid	**	**	2.4	2.7
Availability of specific courses or curriculum	**	**	2.6	2.6
Reputation of the college in athletic programs	**	**	1.8	2.0
Social life at the college	**	**	2.2	2.2
Ability to live at home and attend college	**	**	1.8	2.0
Job or employment placement record of the college	**	**	2.1	2.3

Item 43. *If you are not planning to pursue further education at this time, do you intend to pursue it at a later time?*

	2005-2006		2006-2007	
	ALL HS	LBJ--COMP	ALL HS	LBJ--COMP
Yes, Definitely	36.6%	38.1%	45.8%	41.7%
Yes, Probably	15.3% 15.3%	19.0%	15.9%	16.7%
Maybe	21.3%	23.8%	20.6%	33.3%

|

APPENDIX

Table A.1. Response Rate and Respondent Demographic Characteristics

Seniors Enrolled	# Surveys	Initial Response Rate	African Am	Hispanic	White
---------------------	--------------	-----------------------------	---------------	----------	-------

