

2009-2010



Research indicates that school climate can be either a positive influence on the learning environment or a significant barrier to learning. In AISD, schools that performed better on TAKS also had higher student climate ratings (Schmitt & Carney, 2008). These survey results provide campuses with feedback about how students feel about their school's educational environment. Longitudinal data are provided, where applicable.

The image below displays factors that are known to be related to student academic growth. In this report, we focus on the role of school climate for students (circled in red), which has been measured with six survey subscales: academic self-confidence, adult fairness & respect, teacher expectations, teacher support, student engagement, and behavioral environment.

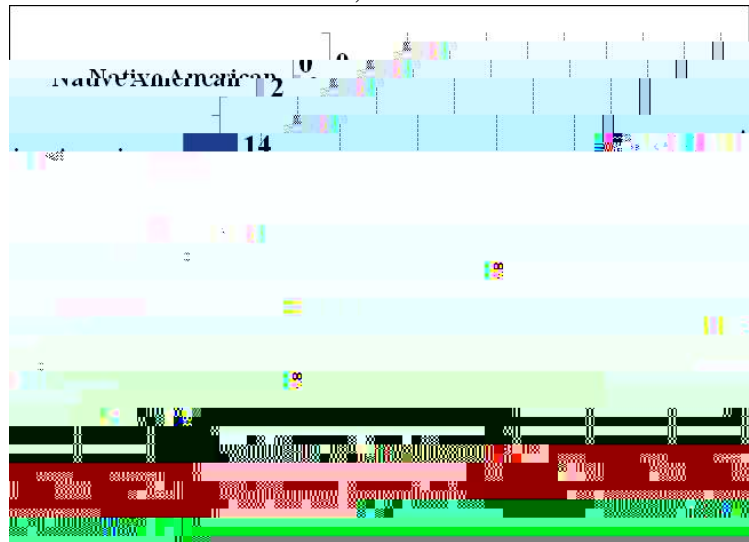
In Spring 2010, 511 students returned surveys for LASA, representing 73% of eligible students from LASA (compared to the district High School response rate, 55%). The table below shows the total number and percentage of students surveyed from each eligible grade at LASA in 2009-2010.

The Figure below compares the percentage of eligible students at LASA (dark purple) to the percentage of students at LASA who completed the survey (light purple), by ethnicity.

Table 1. Response Rate by Grade, 2009-2010

Grade	Number of Students	Response Rate (%)
9h	270	84%
10h	211	68%
11h	218	65%
Total	699	73%

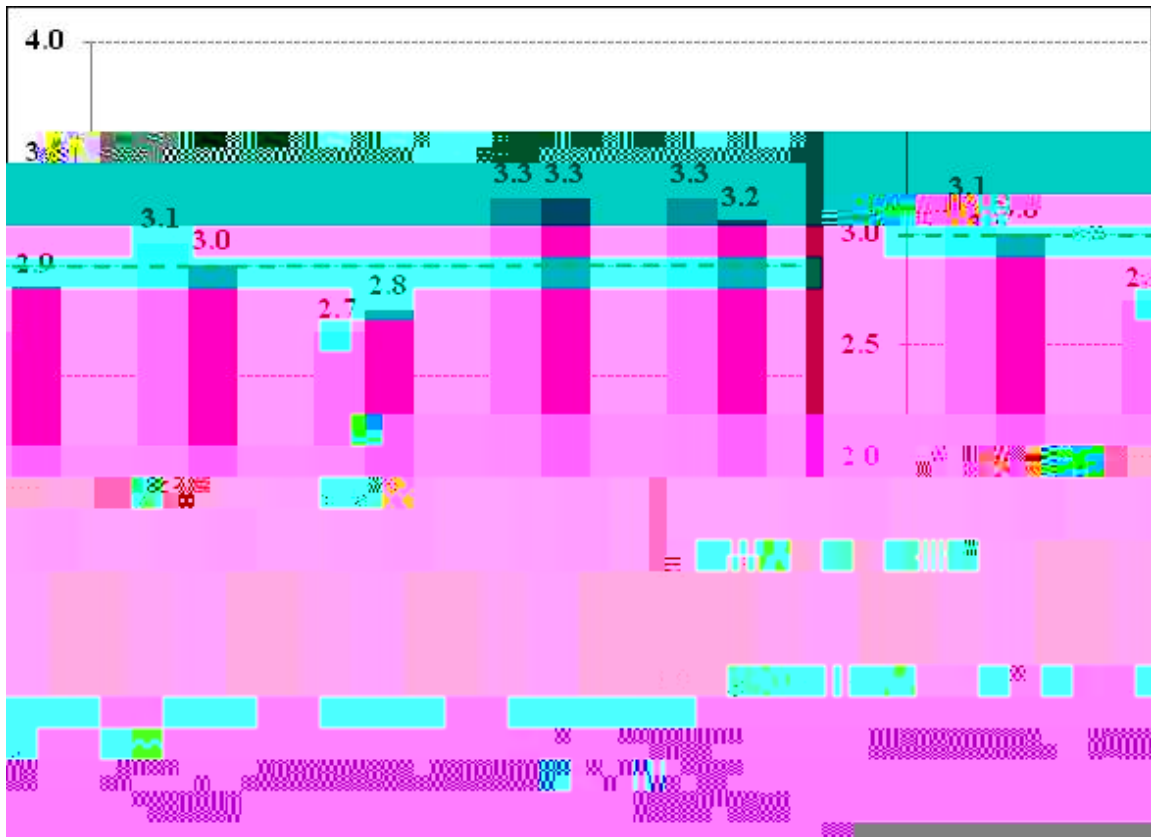
Percentage of Respondents and Students by Ethnicity for LASA, 2009-2010



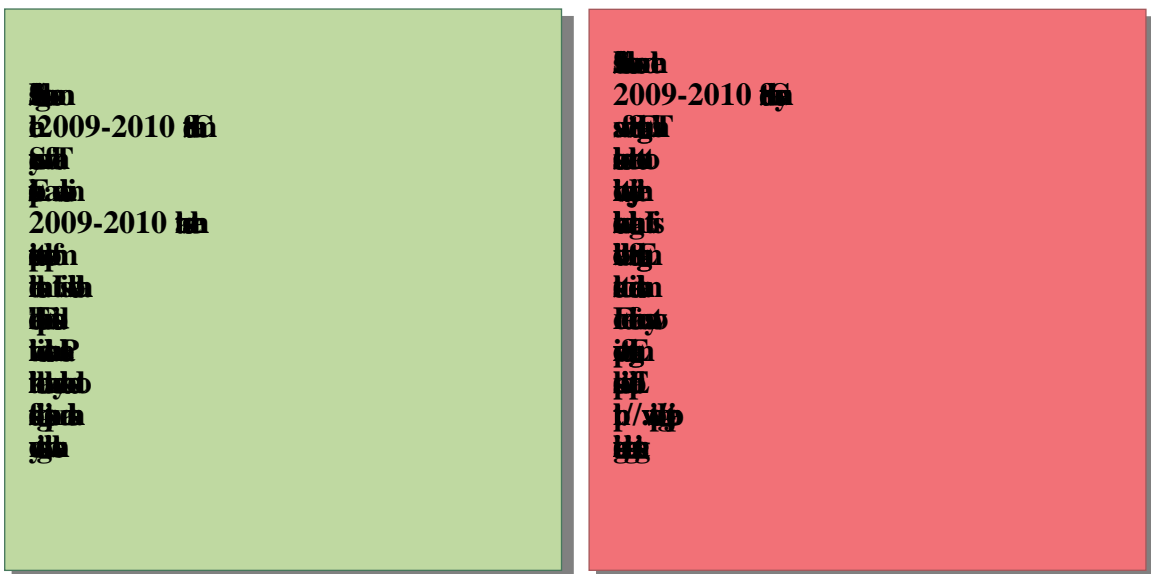
Survey results for LASA for the 2009-2010 school year are presented on the next page. Please note the green and red text boxes that highlight specific areas in which LASA excels, as well as areas in which LASA can improve. The appendix provides more detailed information regarding LASA's student climate survey results from 2007-2008 through 2009-2010. Please review the individual items on each subscale with particular attention to how LASA's average ratings have changed or remained consistent over time. Please note that some subscales have changed from previous years, making longitudinal comparisons inappropriate for some items and subscales. For items and subscales where longitudinal data are available, statistically meaningful changes are flagged with + or - symbols. Please share the results of this report with all campus staff and your Campus Advisory Council to inform campus improvement planning.

The graph below depicts LASA's average student climate survey ratings, compared with average ratings for students across all High Schools in 2009-2010. Scores over 3.0 are desirable, as indicated by the red dashed line. The first step in improving these characteristics is to examine the item-level scores for each area (see Appendix).

Student Climate Survey Subscales for LASA and all High Schools, 2009-2010



Note. The light purple bars represent 2009-2010 data for LASA and the dark purple bars represent 2009-2010 data for all High Schools.



	2007-08	2008-09	2009-10	A H B
1. My classmates show respect to each other.	3.3 +	3.1 -	3.1	3.0
2. My classmates show respect to other students who are different.	3.2	3.1	3.1	2.9
3. I am happy with the way my classmates treat me.	3.5	3.4	3.3	3.3
14. Students at my school follow the school rules.	2.9 +	2.9	2.9	2.7
15. I feel safe at my school.	3.4 +	3.3	3.3	3.2
16. I feel safe on the school property.	3.3	3.1	3.0	3.2
Behavioral Environment average	3.3 +	3.1 -	3.1	3.0

Note: Response options range from 1 (strongly disagree) to 4 (strongly agree). It is desirable to have a response of at least 3.0.

	2007-08	2008-09	2009-10	A H B
4. Teachers at this school care about their students.	3.5		3.2	
17. Teachers give rewards or praise for good behavior.	2.6		2.4	
28. Teachers give rewards or praise for good work.	2.7		2.5	
32. My teachers care about how I do in school.	3.2		3.1	
34. Teachers help students with personal problems.	2.6		2.4	
Teacher Support average	2.9		2.7	

Note: Response options range from 1 (strongly disagree) to 4 (strongly agree). It is desirable to have a response of at least 3.0.

F

F	2007-08	2008-09	2009-10	F
5. Adults at this school listen to student ideas and opinions.	3.1 +	3.1	3.0	3.0
6. Adults at this school treat all students fairly.	3.1	3.1	3.1	3.0
7. The staff in the front office show respect to students.	3.4	3.5	3.5	3.3
10. The school rules are fair.	3.0	3.0	3.1	2.9
11. The consequences for breaking school rules are the same for everyone.	3.2	3.2	3.2	3.1
12. My teachers always make sure the students follow the rules.	3.3	3.1	3.0	3.2
36. My teachers are fair to everyone.	3.1	3.1	3.0	3.0
37. All my teachers use the same rules.	n/a	2.6	2.7	2.8
Adult Fairness and Respect average	n/a	3.1	3.1	3.0

Note: Response options range from 1 (strongly disagree) to 4 (strongly agree). It is desirable to have a response of at least 3.0.

F	2007-08	2008-09	2009-10	F
9. I like to come to school.	n/a	n/a	2.7	2.9
21. I enjoy doing my schoolwork.	2.4	2.4	2.3	2.5
30. My homework helps me learn things I need to know.	2.9	2.9	2.8	3.0
33. My schoolwork makes me think about things in new ways.	2.8	2.8	2.7	2.8
35. I have fun learning in my classes.	2.9	2.8	2.8	2.8
38. My teachers connect what I am doing to my life outside the classroom.	n/a	2.7	2.6	2.7
Student Engagement average	n/a	n/a	2.7	2.8

Note: Response options range from 1 (strongly disagree) to 4 (strongly agree). It is desirable to have a response of at least 3.0. With the addition of item 9 in 2009-2010, subscale comparisons across years are no longer available.



Schmitt, L., & Carney, D. (2008). *Austin ISD Board Level Reports*. Austin, TX: Austin Independent School District.



Meria Carstarphen, Ed.D.



William Caritj, M.Ed.



Holly Williams, Ph.D.



Lindsay M. Lamb, Ph.D.
Lisa N. T. Schmitt, Ph.D.



Mark Williams, President
Vincent Torres, M.S., Vice President
Lori Moya, Secretary
Cheryl Bradley
Annette LoVoi, M.A.
Christine Brister
Robert Schneider
Tamala Barksdale
Sam Guzman