



2005-2006 AISD Parent Survey Results

Kiker Elementary School

The following report contains the results of the 2005-2006 AISD Parent Survey for your campus and all AISD schools at your level. The first section of this report provides a comparison of the campus demographics and the demographics reported by parents who responded to the survey from your campus. The next section describes the percentages of parents selecting specific responses for each survey item, and the final section indicates the actual number of parents who selected each response option. Campus survey results should be examined for areas of strength and opportunities for improvement. Results for all AISD schools at your level and results for your campus from 2004-2005 are presented to provide a reference for comparison.

How many parents responded to the survey in 2004-2005 and 2005-2006, and how does this compare to the number of students in the population each year?

	Campus	District EL	District MS	District HS
# of Parents Responding in 2004-2005	309	12,137	2,007	2,700
# of Students in 2004-2005	880	43,566	15,705	19,976
<i>Ratio of Parent Respondents to Students, 2004-2005</i>	35.1%	27.8%	12.8%	13.5%
# of Parents Responding in 2005-2006	240	10,900	1,801	2,085
# of Students in 2005-2006	987	44,827	15,624	20,081
<i>Ratio of Parent Respondents to Students, 2005-2006</i>	24.3%	24.3%	11.5%	10.4%

Note: The ratio of parent respondents to students is listed above as a percentage for ease of interpretation; however, it is the number of parents who responded per 100 students enrolled.

What did parents report as their child's ethnicity, and how does this compare to the ethnic distribution of the student population?

Ethnicity	% of Students, as Reported by Campus Parent Respondents	% of Students in Campus Population
African American	4.3%	1.8%
Asian	7.2%	9.0%
Hispanic	10.5%	12.0%
Native American	0.5%	0.2%
White	77.5%	77.0%

What did parents report as their child's grade, and how does this compare to the grade level distribution of the student population?

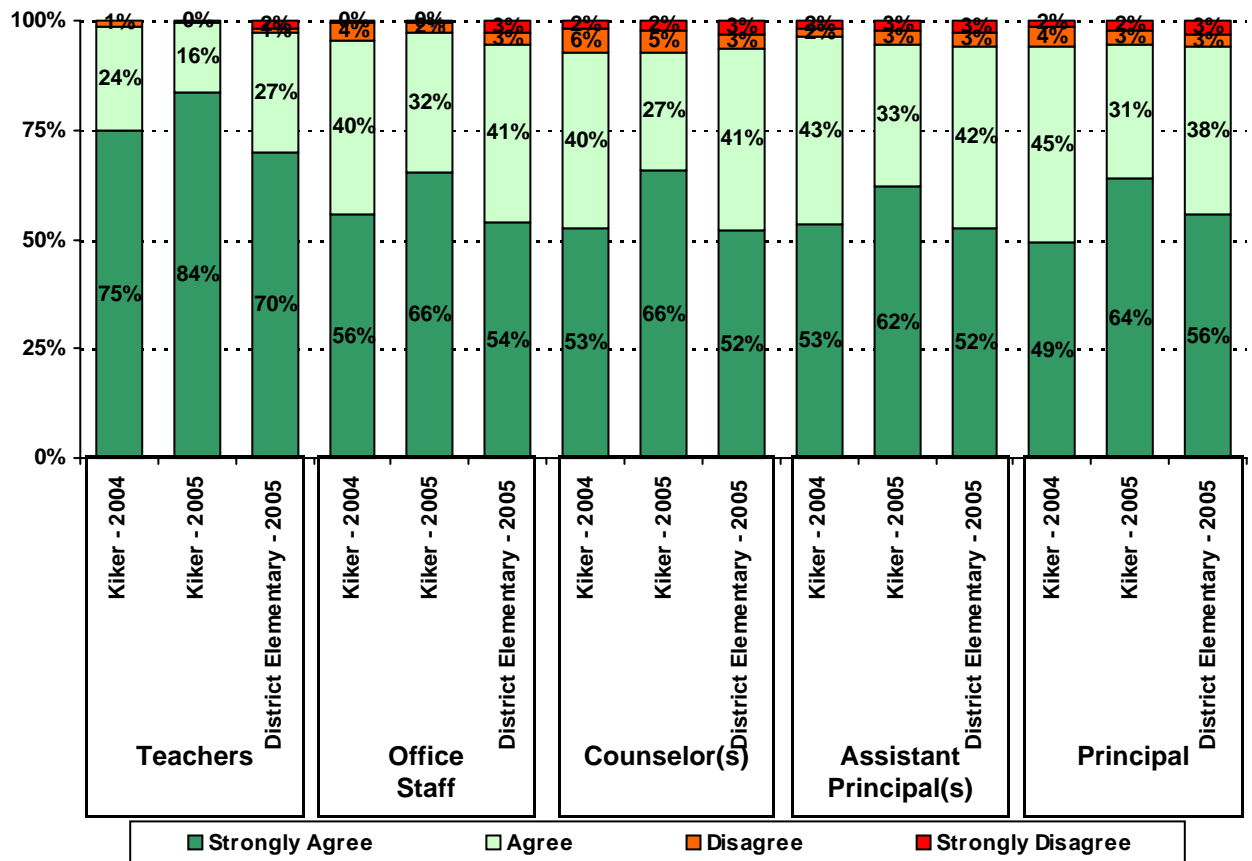
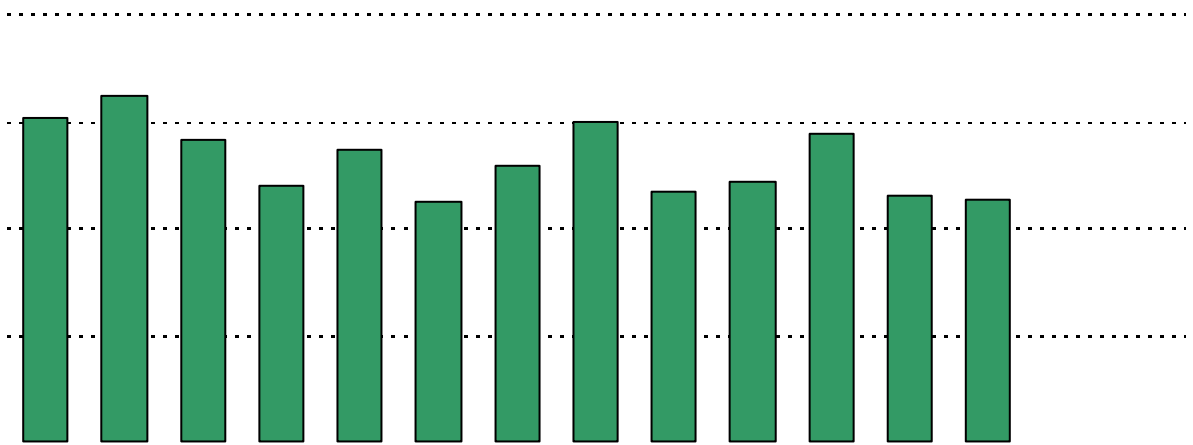
Grade	% of Students, as Reported by Campus Parent Respondents	% of Students in Campus Population
EC	0.5%	1.7%
PK	N/A	N/A
K	8.0%	19.8%
1st	17.6%	15.9%
2nd	18.1%	16.1%
3rd	21.3%	16.1%
4th	18.6%	16.1%
5th	16.0%	14.3%
6th	N/A	N/A

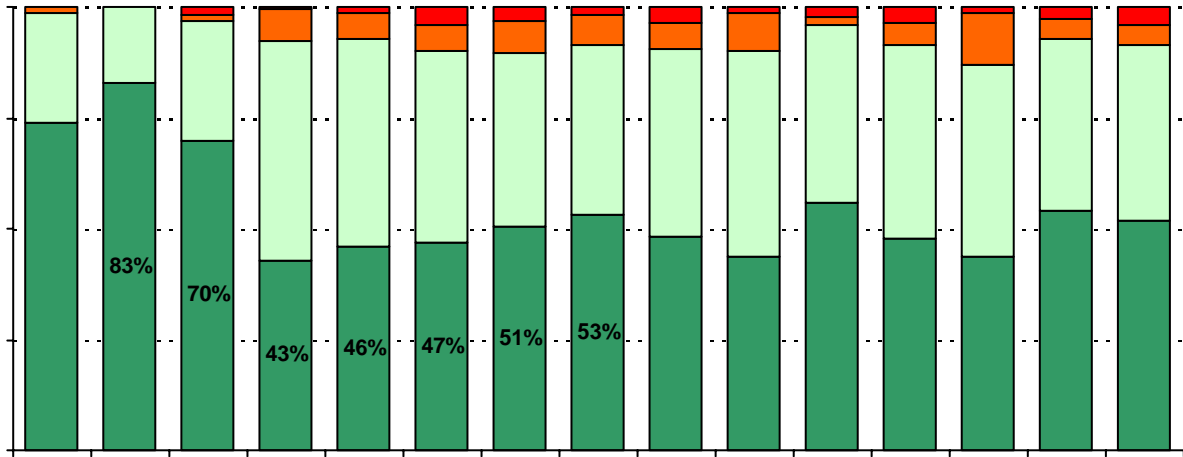
Note: Student population data are based on Fall PEIMS data submitted by the district to TEA, and may differ from the official AEIS report.

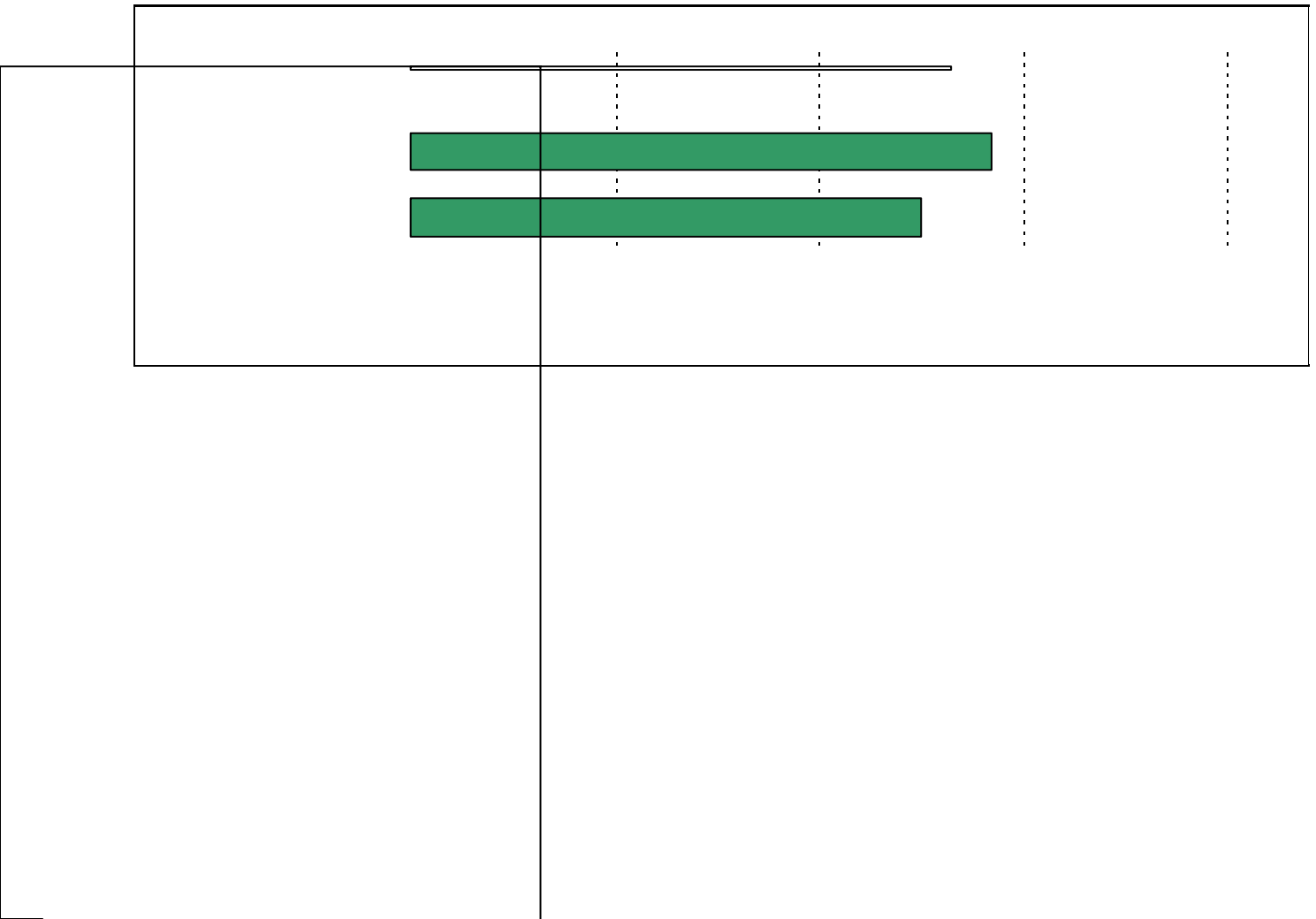
USING THE RESULTS OF THE AISD PARENT SURVEY

Each survey item is presented below, followed by a bar graph containing your school's results for two years and this year's results for all campuses at your level. You will be able to identify areas in which your school's results have changed over time, and you will be able to compare the responses of your school's parents to those of parents at your level district-wide.

Please examine your results to determine areas of strength and opportunities for improvement. Areas of strength can be identified by large percentages of parents who "Strongly Agree" or "Agree" with a statement. Opportunities for improvement can be identified by large percentages of parents who "Disagree" or "Strongly Disagree" with a statement. In addition, please look for patterns in which one staff category consistently receives more positive or negative responses than



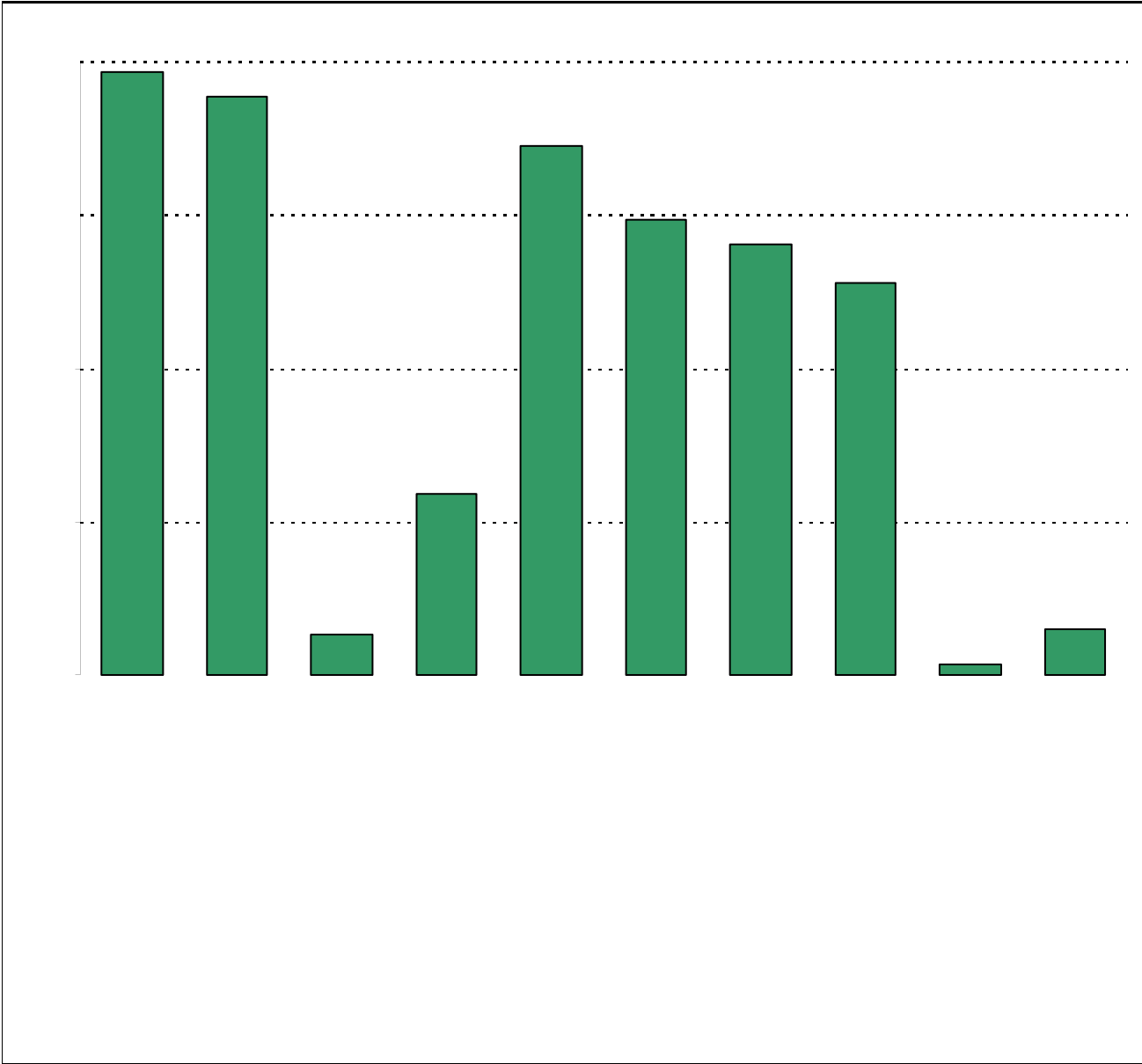




.....



Required



Item Response Details

Number of Kiker Elementary School Parent Responses, by Response Option

		Strongly Agree	Agree	Disagree	Strongly Disagree	Don't Know/NA
3a.	n = 235	152	59	4	4	16
3b.	n = 234	153	54	1	4	22
3c.	n = 234	131	40	2	2	59
3d.	n = 235	160	69	4	1	1
3e.	n = 234	189	45	0	0	0
5a.	n = 235	132	64	6	5	28
5b.	n = 234	124	65	6	5	34
5c.	n = 232	118	48	9	4	53
5d.	n = 232	133	64	5	1	29
5e.	n = 235	196	37	1	0	1
6a.	n = 228	104	74	9	5	36
6b.	n = 227	99	71	3	4	50
6c.	n = 228	79	57	10	3	79
6d.	n = 225	75	76	10	2	62
6e.	n = 229	187	39	0	0	3
7a.	n = 230	109	52	6	6	57
7b.	n = 230	109	56	3	5	57
7c.	n = 231	85	51	4	4	87
7d.	n = 228	80	48	3	0	97
7e.	n = 229	175	41	6	0	7
8a.	n = 230	158	41	4	5	22
8b.	n = 231	159	43	4	2	23
		135	42	4	3	47

11a.

n = 232

139

68

6

1

18