



2006-2007 AISD Parent Survey Results

Joslin Elementary School

The following report contains the results of the 2006-2007 AISD Parent Survey for your campus and all AISD schools at your level. The first section of this report provides a comparison of the campus demographics and the demographics reported by parents who responded to the survey from your campus. The next section describes the percentages of

How many parents responded to the survey in 2005-2006 and 2006-2007, and how does this compare to the number of students in the population each year?

	Campus	District EL	District MS	District HS
	64			
	349			
	131			
	360			

What did parents report as their child's ethnicity, and how does this compare to the ethnic distribution of the student population?

Ethnicity	% of Students, as Reported by Campus Parent Respondents	% of Students in Campus Population
	5.5%	
Asian	0.9%	1.4%
Hispanic	77.3%	70.0%
Native American	0.0%	0.6%
White	16.4%	19.4%

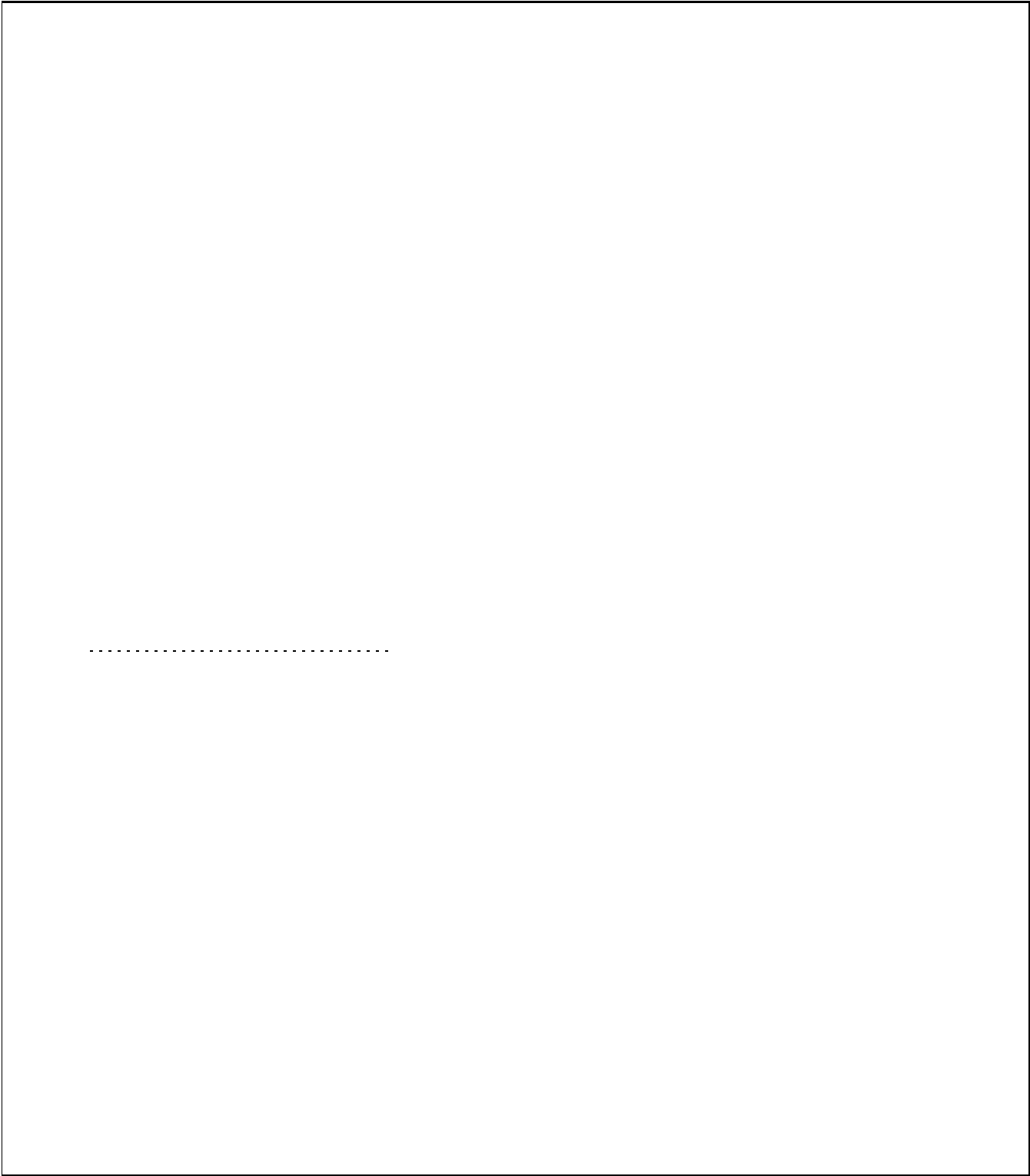
What did parents report as their child's grade, and how does this compare to the grade level distribution of the student population?

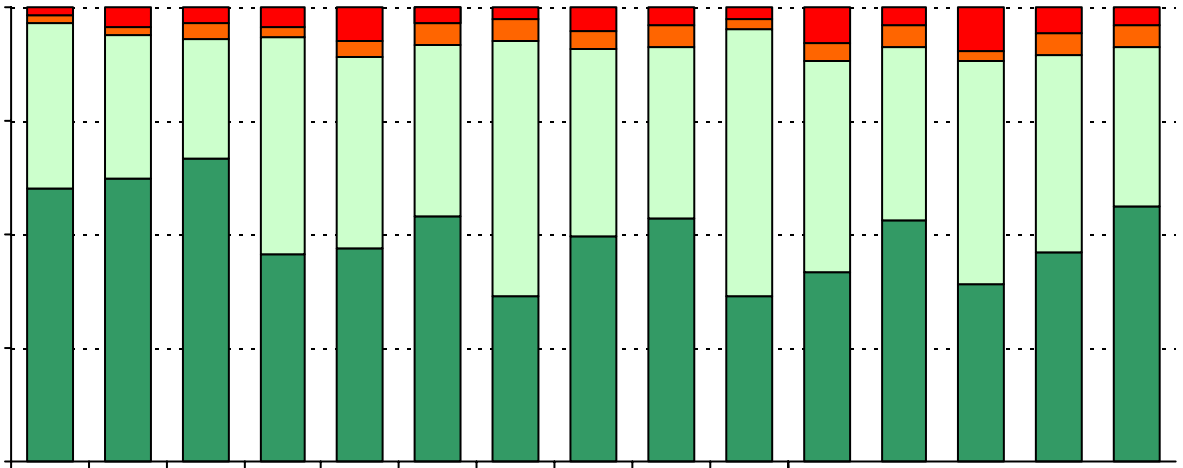
Grade	% of Students, as Reported by Campus Parent Respondents	% of Students in Campus Population
EC	0.0%	0.8%
PK	9.7%	13.6%
K	8.9%	13.1%
1st	13.7%	15.6%
2nd	8.9%	11.7%
3rd	23.4%	13.3%
4th	11.3%	19.2%
5th	24.2%	12.8%
6th	N/A	N/A

Note: Student population data are based on Fall PEIMS data submitted by the district to TEA, and may differ from the official AEIS report.

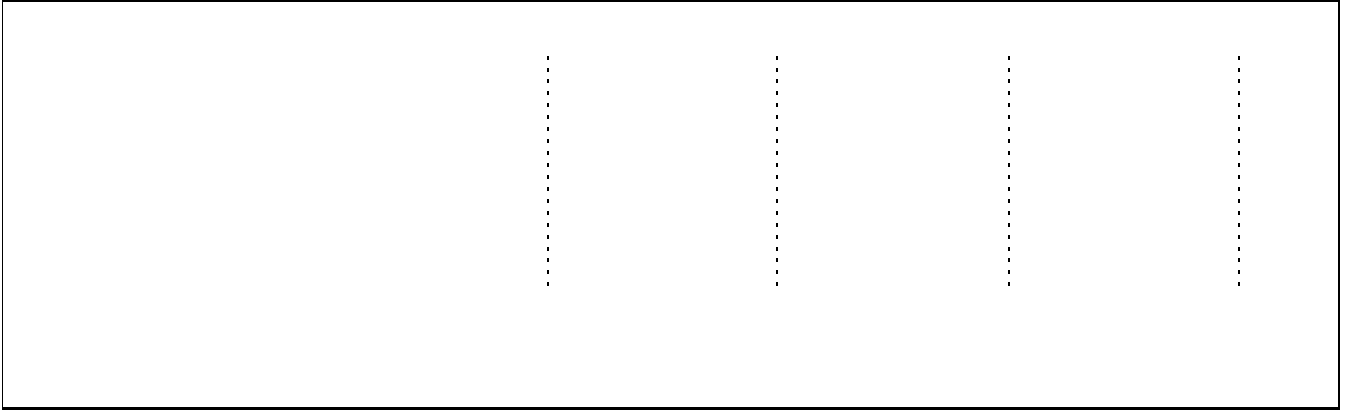
USING THE RESULTS OF THE AISD PARENT SURVEY

Each survey item is presented below, followed by a bar graph containing your school's results for two years and this year's results for all campuses at your level. You will be able to identify areas





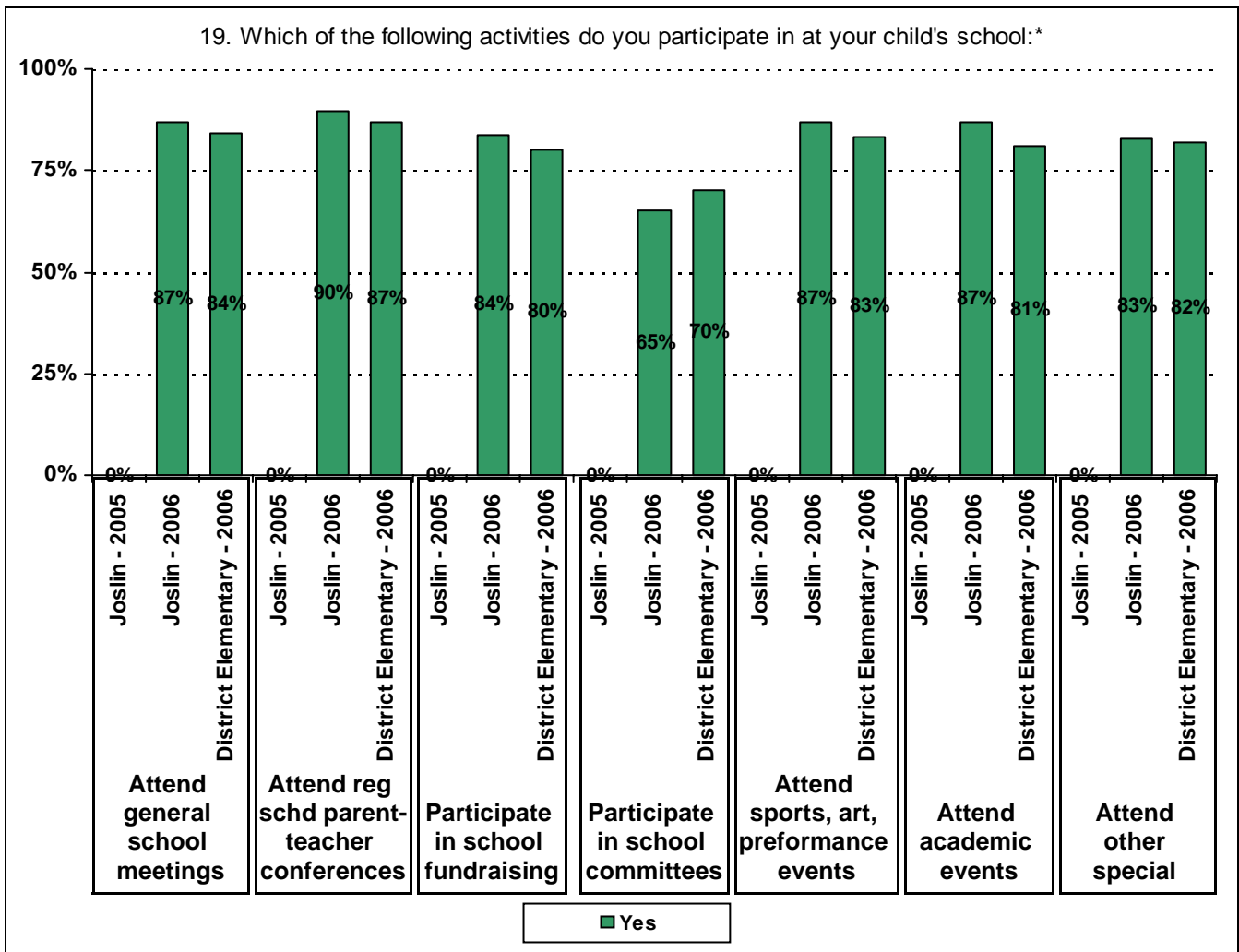
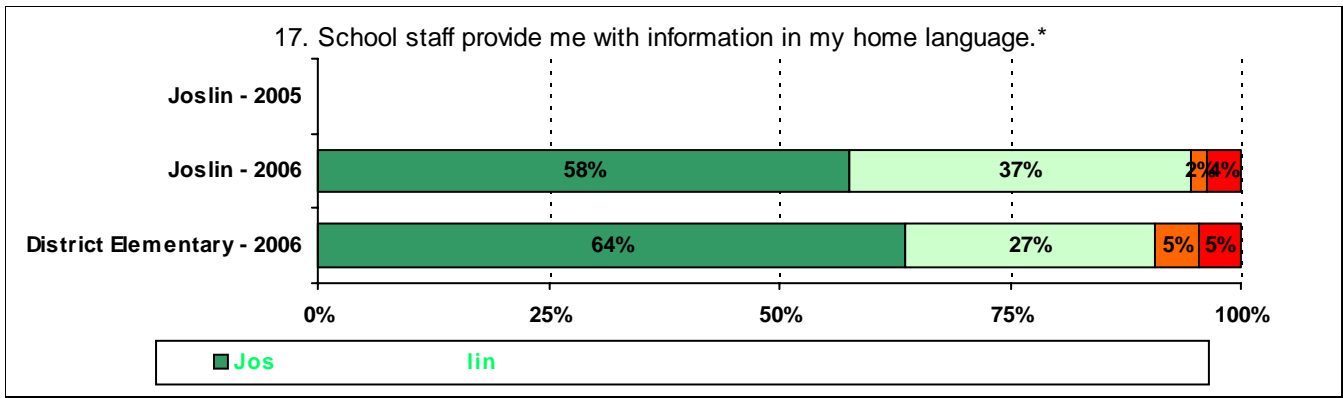
Yellow rectangular marker.



A large rectangular box with a solid black border, containing ten vertical dotted lines spaced evenly across its width. This is a template for handwriting practice.

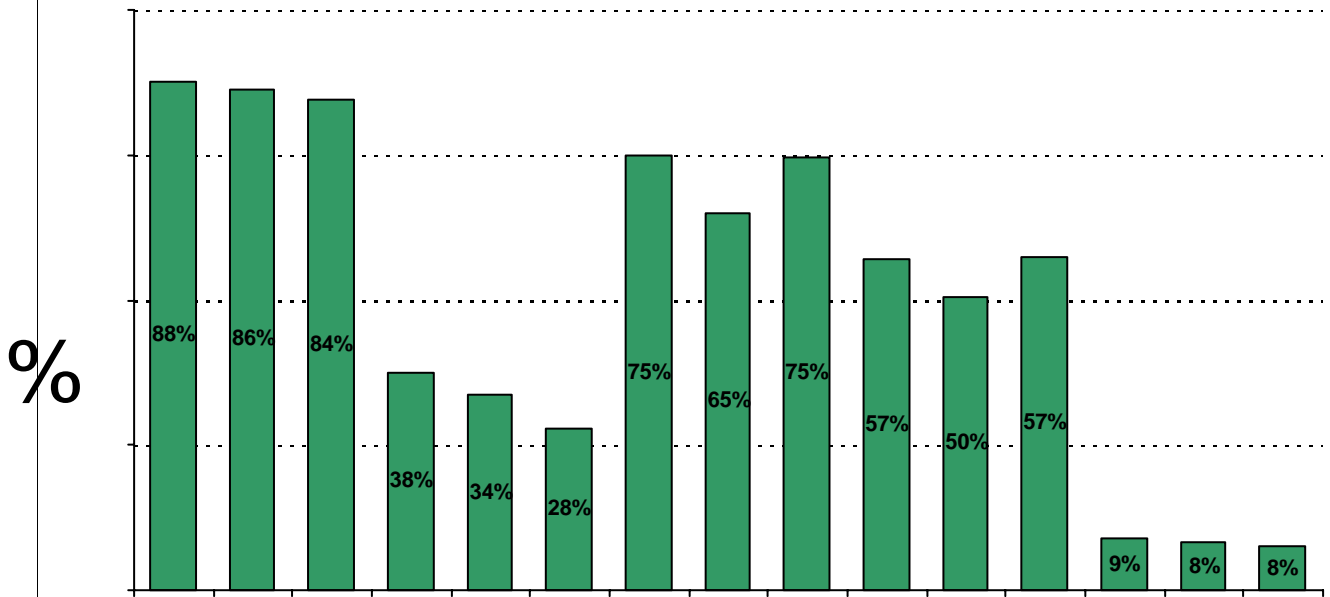
**Required
curriculum**





* Item(s) #17, #18, #19 added to the survey in 2006

20. My goals for my child include the following plans:



Item Response Details

Number of Joslin Elementary School Parent Responses, by Response Option

		Strongly Agree	Agree	Disagree	Strongly Disagree	Don't Know/NA
4.	n = 97		3	94		
5a.	n = 118	50	46	3	5	14
5b.	n = 117	46	37	3	7	24
5c.	n = 117	46	35	2	6	28
5d.	n = 118	58	44	4	9	3
5e.	n = 123	76	36	4	5	2
6a.	n = 108	40	38	4	5	21
6b.	n = 103	32	36	3	6	26
6c.	n = 100	38	32	3	4	23
6d.	n = 107	43	39	3	7	15
6e.	n = 120	71	36	2	5	6
7a.	n = 105	39	42	3	2	19
7b.	n = 102	28	41	4	2	27
7c.	n = 104	31	38	5	2	28
7d.	n = 98	30	38	5	5	20
7e.	n = 117	69	39	2	3	4
8a.	n = 105	38	44	3	0	20
8b.	n = 99	33	37	3	2	24
8c.	n = 104	38	35	3	5	23
8d.	n = 103	35	35	5	4	24
8e.	n = 118	64	41	3	3	7
9a.	n = 110	60	36	1	4	9
9b.	n = 105	52	31	0	4	18
9c.	n = 103	52	33	0	3	15
9d.	n = 108	59	38	0	6	5
9e.	n = 117	72	37	2	3	3
9f.	n = 102	54	31	3	3	11
10.	n = 123	33	37	9	7	37
11.	n = 125	65	46	2	7	5
12.	n = 121	61	45	5	6	4

