

Jordan Elementary School

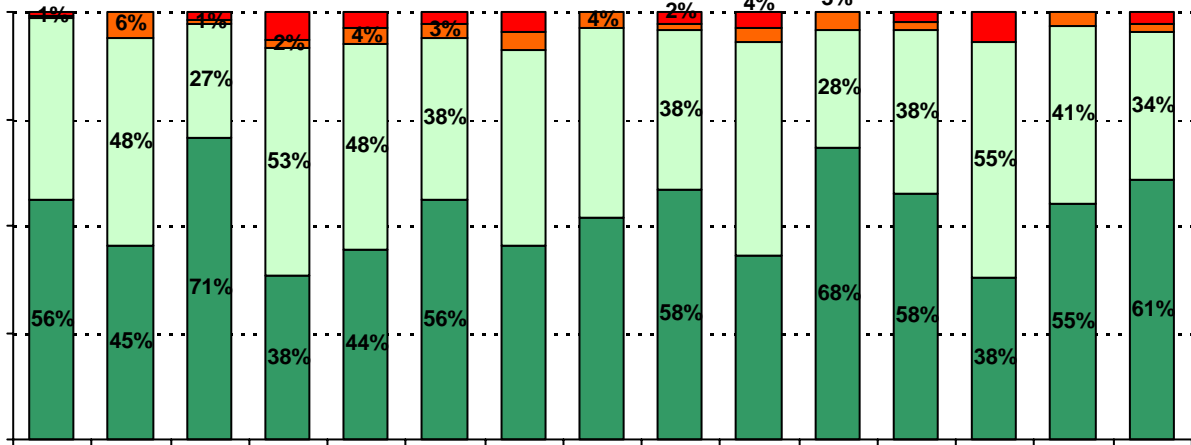
How many parents responded to the survey in 2004-2005 and 2005-2006, and how does this compare to the number of students in the population each year?

	Campus	District EL	District MS	District HS
	138			
	638			
	47			
	619			

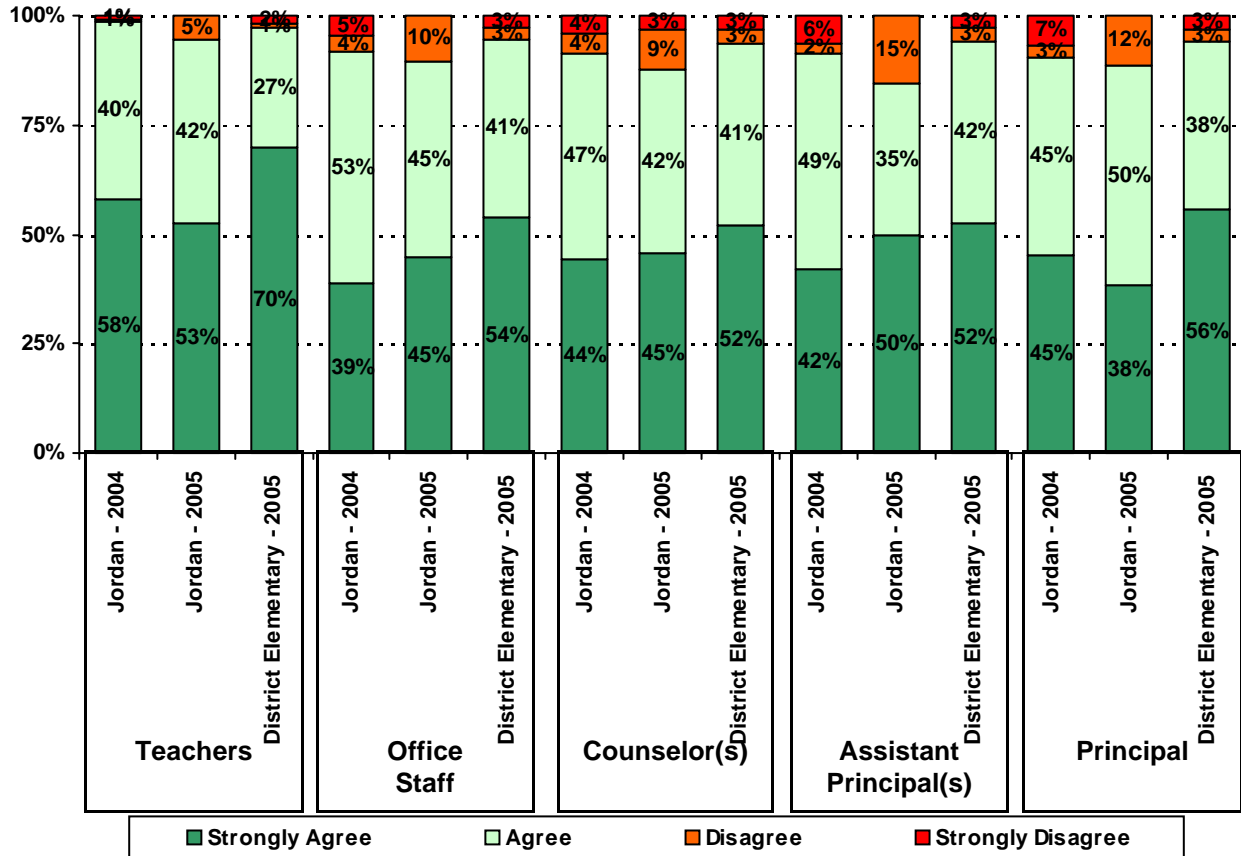
Note: The ratio of parent respondents to students is listed above as a percentage for ease of interpretation; however, it is the number of parents who responded per 100 students enrolled.

	% of Students, as Reported by Campus Parent Respondents	% of Students in Campus Population
Asian	38.2%	
Hispanic	0.0%	0.0%
Hispanic	61.8%	64.5%
Native American	0.0%	0.0%
White	0.0%	1.1%

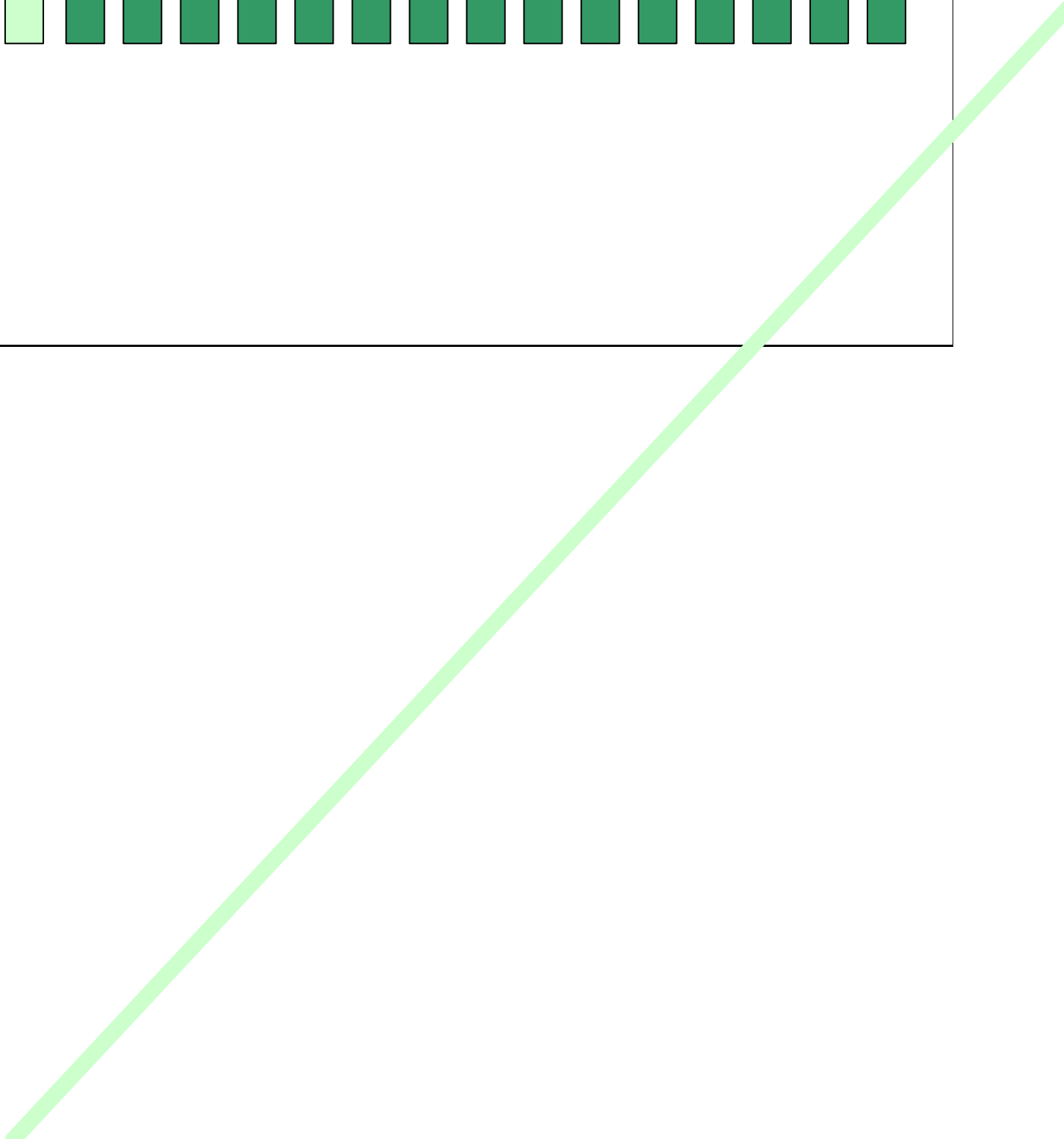
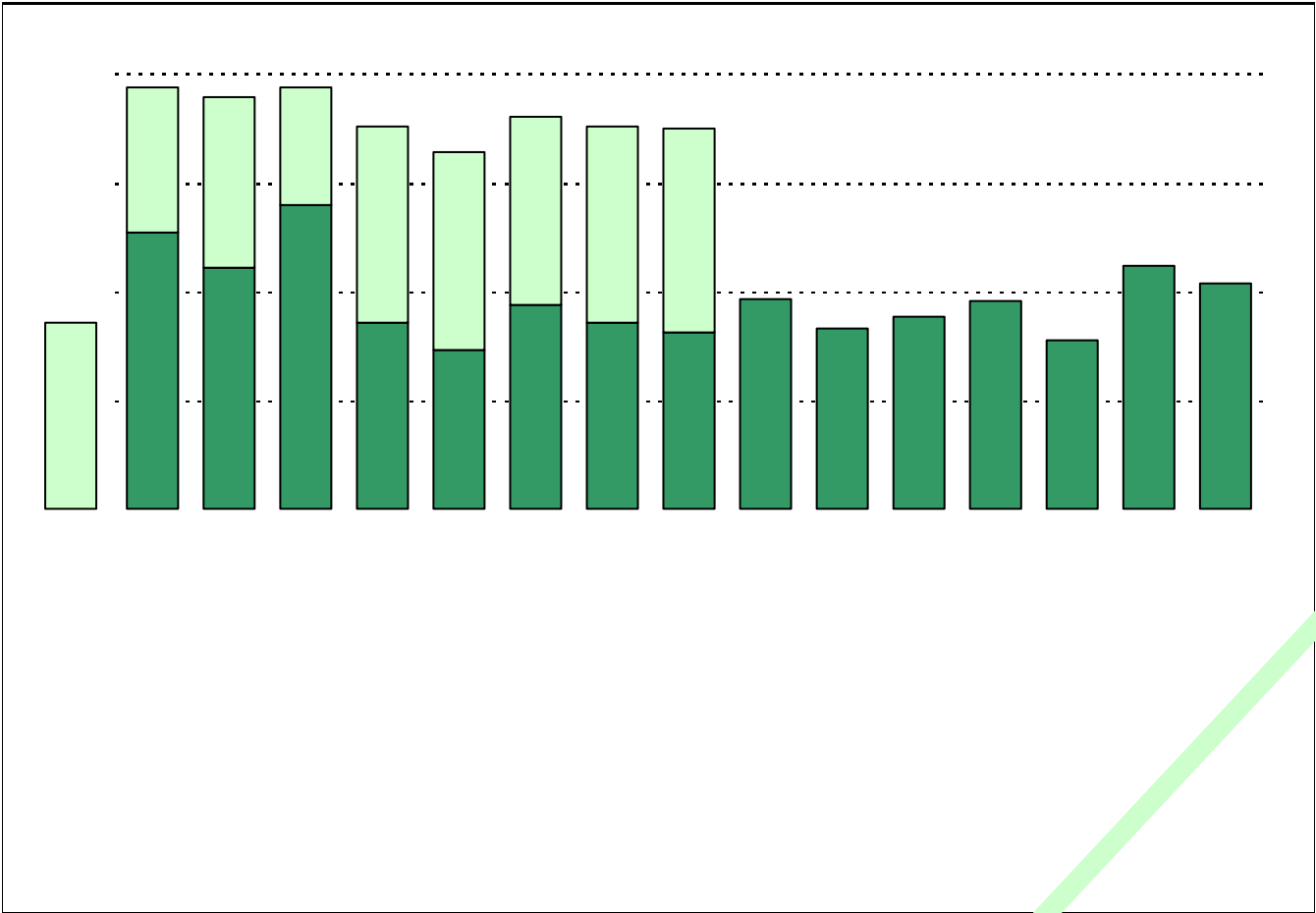
4. The following school staff treat me with courtesy and respect.



5. The following school staff provide me with opportunities for two-way communication.



■ Strongly Agree
 ■ Agree
 ■ Disagree
 ■ Strongly Disagree



.....



Required

A rectangular box containing four horizontal dotted lines, serving as a template for writing or drawing.



Number of Jordan Elementary School Parent Responses, by Response Option
(Continued)

		Strongly Agree	Agree	Disagree	Strongly Disagree	Don't Know/NA
11a.	n = 34	13	19	1	0	1
11b.	n = 35	17	16	1	0	1
11c.	n = 34	15	19	0	0	0
11d.	n = 33	15	16	0	1	1
11e.	n = 36	15	17	1	1	2
11f.	n = 38	21	16	1	0	0
11g.	n = 37	15	18	3	0	1
11h.	n = 35	17	16	1	1	0
11i.	n = 35	19	13	1	0	2
12a.	n = 36	17	11	2	0	6
12b.	n = 40	14	14	2	0	10
12c.	n = 35	14	15	2	0	4
12d.	n = 36	19	14	1	0	3
12e.	n = 38	21	15	1	1	0
12f.	n = 40	19	16	4	0	1
13a.	n = 37	23	14	0	0	0
13b.	n = 33	16	13	2	0	2
13c.	n = 33	17	14	0	0	2
13d.	n = 42	20	20	1	0	1
13e.	n = 39	22	16	1	0	0
14.	n = 35	<p><i>Item 14 did not use the "Strongly Agree" to "Strongly Disagree" scale. Numbers below reflect the number of parents selecting each goal. These numbers will not sum to the total number of item respondents because parents may select multiple goals.</i></p>				
		High School diploma	Certificate/ Associates degree	Bachelors degree	Graduate/ Professional degree	Military service
		34	9	21	18	1