

How many parents responded to the survey in 2004-2005 and 2005-2006, and how does this compare to the number of students in the population each year?



What did parents report as their child's grade, and how does this compare to the grade level distribution of the student population?

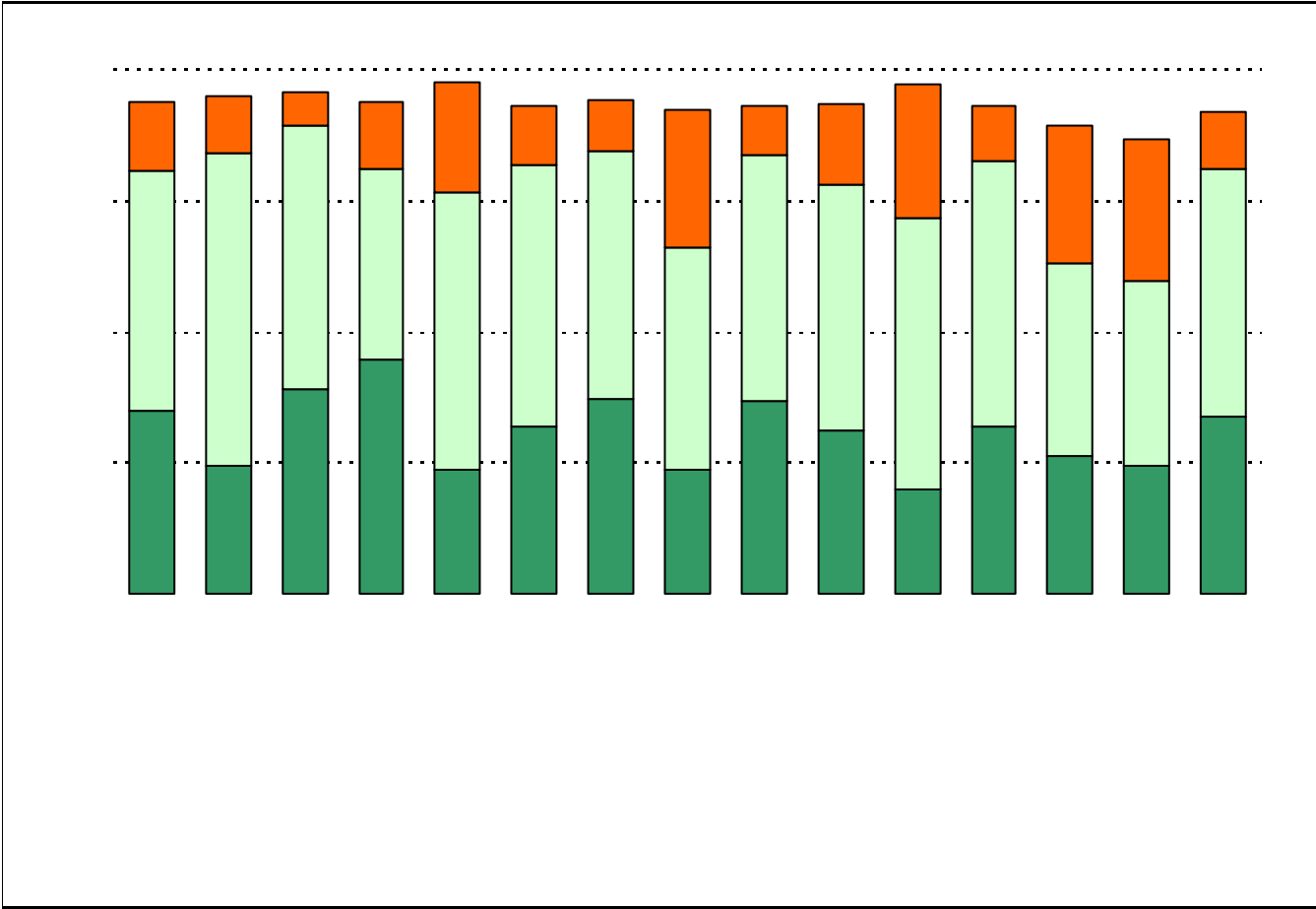
Grade	% of Students, as Reported by Campus Parent Respondents	% of Students in Campus Population
6th	N/A	N/A
7th	N/A	N/A
8th	N/A	N/A
9th	29.5%	43.5%
10th	22.7%	28.6%
11th	38.6%	13.5%
12th	9.1%	14.4%

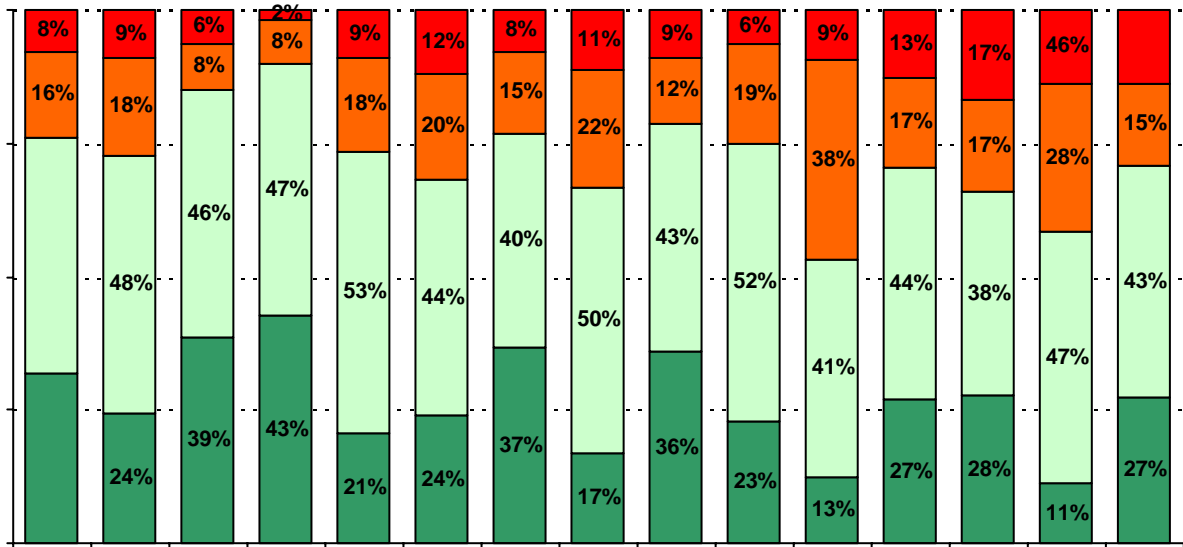
Note: Student population data are based on Fall PEIMS data submitted by the district to TEA, and may differ from the official AEIS report.

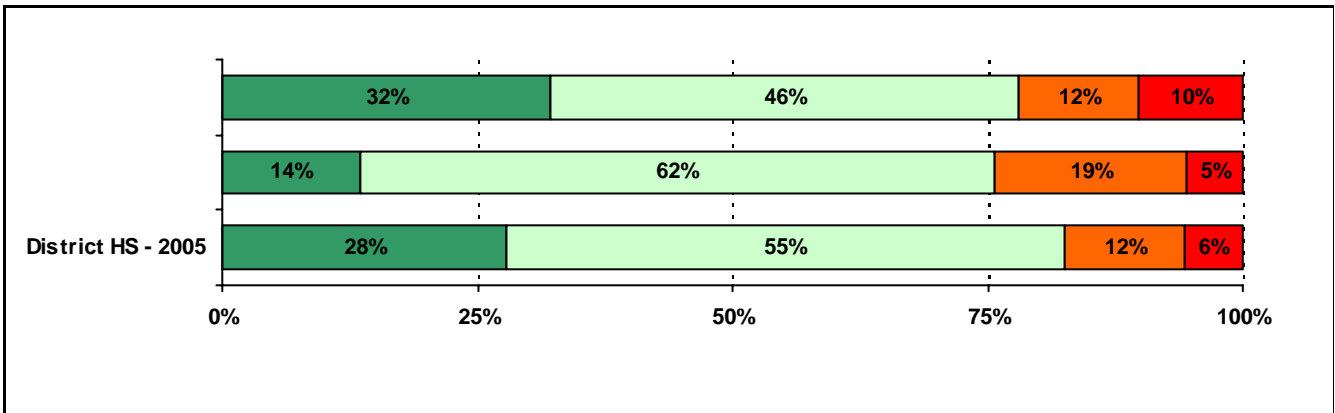
USING THE RESULTS OF THE AISD PARENT SURVEY

Each survey item is presented below, followed by a bar graph containing your school's results for two years and this year's results for all campuses at your level. You will be able to identify areas in which your school's results have changed over time, and you will be able to compare the responses of your school's parents to those of parents at your level district-wide.

Please examine your results to determine areas of strength and opportunities for improvement. Areas of strength can be identified by large percentages of parents who "Strongly Agree" or "Agree" with a statement. Opportunities for improvement can be identified by large percentages of parents who "Disagree" or "Strongly Disagree" with a statement. In addition, please look for patterns in which one staff category consistently receives more positive or negative responses than other staff categories. This will help you to identify opportunities for praise and areas in which

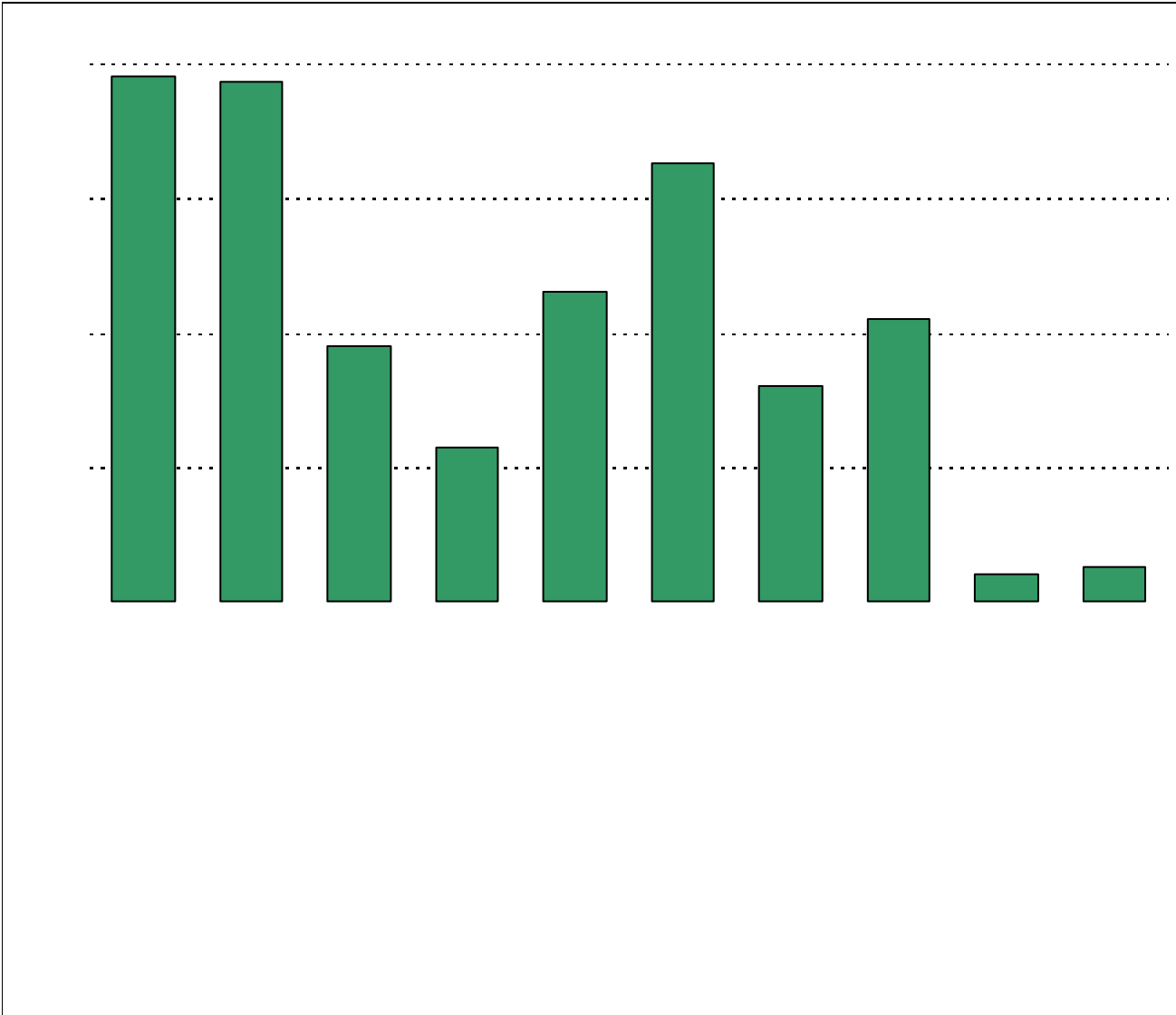






.....
|

Required



Item Response Details

Number of Johnston High School Parent Responses, by Response Option

		Strongly Agree	Agree	Disagree	Strongly Disagree	Don't Know/NA
4a.	n = 44	7	21	5	1	10
4b.	n = 42	6	17	6	2	11
4c.	n = 43	7	22	6	1	7
4d.	n = 44	12	20	3	2	7
4e.	n = 42	15	18	3	0	6
5a.	n = 42	9	13	10	5	5
5b.	n = 43	7	18	9	1	8
5c.	n = 43	9	16	10	3	5
5d.	n = 43	9	20	8	1	5
5e.	n = 42	9	22	4	2	5
6a.	n = 43	4	17	10	5	7
6b.	n = 42	4	13	12	3	10
6c.	n = 43	6	18	8	4	7
6d.	n = 41	7	18	6	3	7
6e.	n = 41	8	16	6	3	8
7a.	n = 42	10	14	7	2	9
7b.	n = 41	11	14	4	1	11
7c.	n = 43	11	17	6	1	8
7d.	n = 42	6	17	7	1	11
7e.	n = 41	13	12	4	4	8
8a.	n = 40	13	16	2	1	8
8b.	n = 43	12	19	2	1	9
8c.	n = 42	16	16	1	4	5
8d.	n = 44	14	18	5	1	6
8e.	n = 44	13	17	5	2	7
8f.	n = 41	11	16	3	3	8
9.	n = 45	5	23	7	2	8
10.	n = 42	6	20	4	4	8

Number of Johnston High School Parent Responses, by Response Option
(Continued)

		Strongly Agree	Agree	Disagree	Strongly Disagree	Don't Know/NA										
11a.	n = 42	10	20	5	3	4										
11b.	n = 39	13	16	5	2	3										
11c.	n = 42	11	22	4	2	3										
11d.	n = 42	11	22	5	1	3										
11e.	n = 41	9	21	6	2	3										
11f.	n = 41	11	22	1	2	5										
11g.	n = 41	7	23	4	3	4										
11h.	n = 41	10	18	4	5	4										
11i.	n = 40	10	15	6	5	4										
12a.	n = 41	9	16	7	1	8										
12b.	n = 39	7	16	6	2	8										
12c.	n = 39	7	18	5	2	7										
12d.	n = 41	10	15	7	2	5										
12e.	n = 41	5	16	9	3	8										
12f.	n = 39	3	18	7	3	8										
13a.	n = 43	13	18	4	2	6										
13b.	n = 39	10	14	3	6	6										
13c.	n = 39	9	13	5	7	5										
13d.	n = 40	10	19	2	3	6										
13e.	n = 40	9	20	4	2	5										
14a.	n = 41	8	15	6	5	7										
14b.	n = 42	9	14	8	6	5										
14c.	n = 41	8	10	10	6	7										
14d.	n = 40	8	14	7	5	6										
14e.	n = 39	6	15	7	5	6										
15.	n = 40	<p><i>Item 14 did not use the "Strongly Agree" to "Strongly Disagree" scale. Numbers below reflect the number of parents selecting each goal. These numbers will not sum to the total number of item respondents because parents may select multiple goals.</i></p> <table border="1"> <thead> <tr> <th>High School diploma</th> <th>Certificate/ Associates degree</th> <th>Bachelors degree</th> <th>Graduate/ Professional degree</th> <th>Military service</th> </tr> </thead> <tbody> <tr> <td>39</td> <td>19</td> <td>23</td> <td>16</td> <td>2</td> </tr> </tbody> </table>					High School diploma	Certificate/ Associates degree	Bachelors degree	Graduate/ Professional degree	Military service	39	19	23	16	2
High School diploma	Certificate/ Associates degree	Bachelors degree	Graduate/ Professional degree	Military service												
39	19	23	16	2												