

OVERVIEW

Research indicates that school climate can be either a positive influence on the learning environment or a significant barrier to learning. Positive school climate has been associated with fewer behavioral problems for students and increased achievement levels for students (Marshall, n.d.). According to Brian Perkins of the National School Boards Association (2006), research shows that improved school climate contributes to a variety of positive outcomes including higher student achievement, higher morale among students and teachers, fewer student dropouts, reduced violence, better community relations, and increased institutional pride. For these reasons, it is important to examine your school's student climate survey results to identify areas in which your campus climate is strong and areas in need of improvement.

This report summarizes the responses from your school's AISD Student Climate Survey over the last three years, and provides the current year results for all AISD schools at your level. The climate survey measures three dimensions of a school's overall climate, called Behavioral Environment, Adult/Student Interactions, and Academic Environment. Each of these three dimensions is made up of several similar concepts that are measured with groups of related items, or subscales.

CAMPUS RESULTS

Average response scores for your campus over the last three years and for all schools at your level this year are presented below for the climate dimensions and th

	Johnson 03-04	Johnson 04-05	Johnson 05-06	All High Schools 05-06
Behavioral Environment	2.41	2.50	2.42	2.52
<i>Peer Behavior</i>	2.34	2.43	2.30	2.42
<i>Behavioral Expectations</i>	2.46	2.55	2.63	2.60
<i>School Safety and Cleanliness</i>	2.44	2.56	2.41	2.60
Adult/Student Interactions	2.45	2.56	2.39	2.53
<i>Teacher Support and Engagement</i>	2.45	2.54	2.37	2.53
<i>Adult Fairness and Respect</i>	2.46	2.58	2.41	2.54
Academic Environment	2.84	2.91	2.78	2.84
<i>Academic Standards</i>	3.05	3.14	2.98	3.03
<i>Academic Self-Confidence</i>	2.77	2.84	2.72	2.79

First, examine your campus scores for changes over time. Green upward-facing arrows indicate a statistically meaningful increase in average score from the previous year, red downward-facing arrows indicate a statistically meaningful decrease from the previous year. It is particularly important to examine the individual item responses on the following pages for any subscales with meaningful changes from year to year. If you do not see any arrows, changes in your school's dimension or subscale scores may not represent meaningful differences from year to year.

If the average score for your campus has increased in a particular area, please consider campus policies and practices that may be responsible for these improvements. Conversely, if the average score has decreased, please examine any changes on your campus that may account for these declines and consider possible strategies for improvement. Page 6 contains more information about ways to improve school climate.

Scores for your campus this year should be examined relative to the scores for all schools at your level. If your school's average score for a dimension or subscale is lower than the average for all schools at your level, individual item responses will help you to identify areas for targeted improvement efforts. Alternatively, if your school's average score for this year is higher than the average for all schools at your level, individual item responses will provide more detailed information regarding specific areas of strength to help you identify successful strategies.

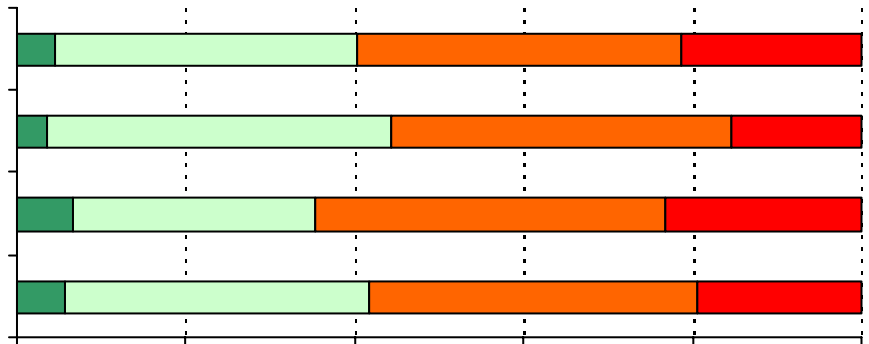
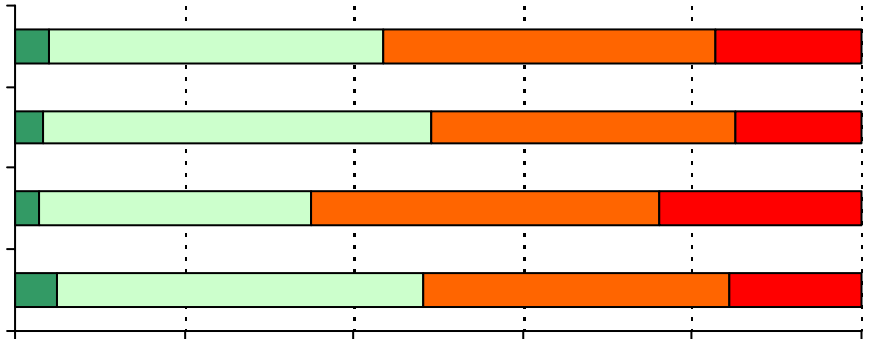
The following pages contain response averages for each survey item, grouped by subscale. More detailed information regarding the percentage of students selecting each response option may be found in the Appendix at the end of this report.

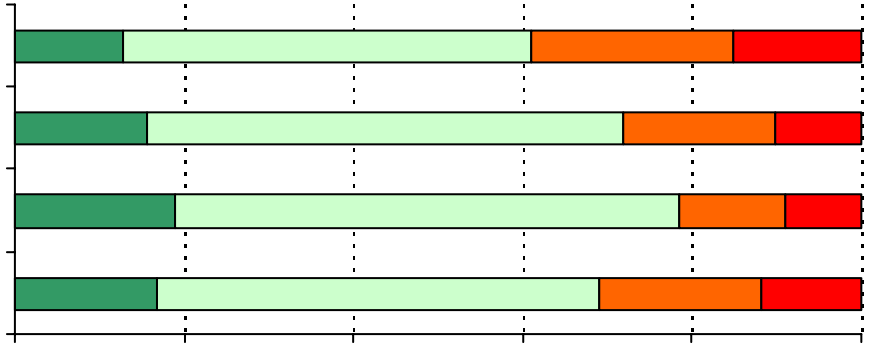
	Johnson	Johnson	Johnson	All High Schools
1. Students in my school respect each other.	2.30	2.38	2.14	2.38
2. Students at my school respect other students who are different than they are.	2.24	2.32	2.19	2.28
3. I am happy with the way students treat me at school.	2.84	2.92	2.92	2.92
14. Students at my school obey the school rules.	1.91	2.03	1.89	2.04

	Johnson	Johnson	Johnson	All High Schools
9. Everyone knows what	2.49	2.54	2.56	2.60
12. The school rules are strictly enforced.	2.47	2.60	2.69	2.66
13. If a school rule is broken, students know what kind of punishment will follow.	2.43	2.49	2.60	2.55

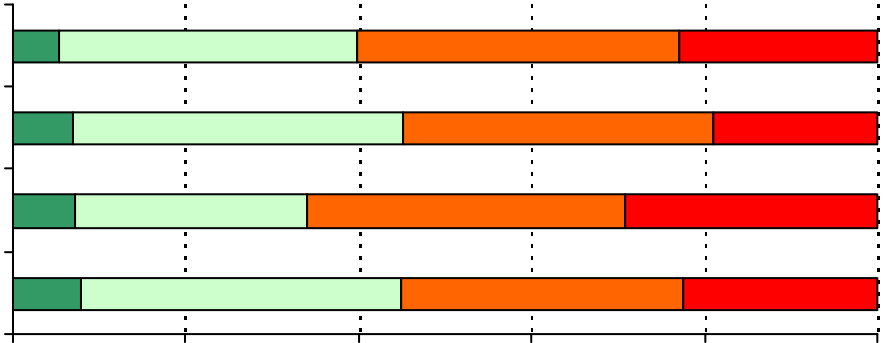
	Johnson	Johnson	Johnson	All High Schools
	03-04	04-05	05-06	05-06
18. Teachers give rewards or praise for good behavior.	2.13	2.26	2.22	2.34
31. Teachers give rewards or praise for good work.	2.32	2.40	2.31	2.43
27. My teachers are excited about what they teach.	2.57	2.67	2.40	2.60
28. My teachers seem to enjoy teaching.	2.67	2.79	2.53	2.72
	2.72	2.78	2.62	
	2.40	2.42		
Teacher Support and Engagement Average	2.45	2.54	2.37	2.53

1. Students in my school respect each other.

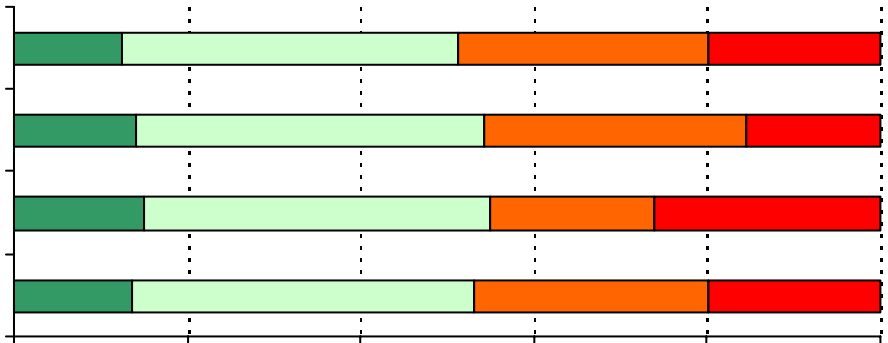




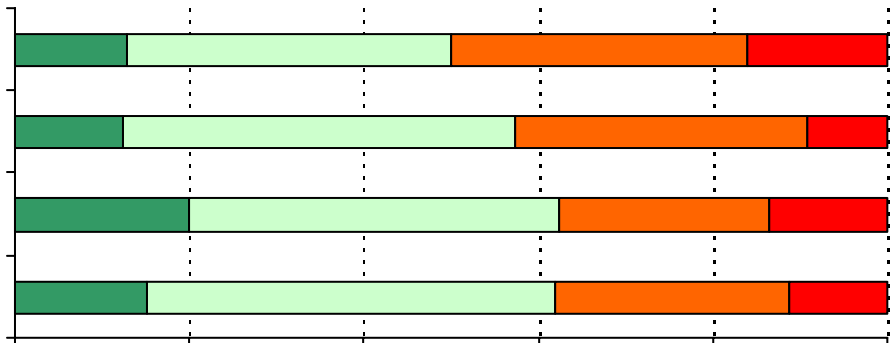
10. The school rules are fair.

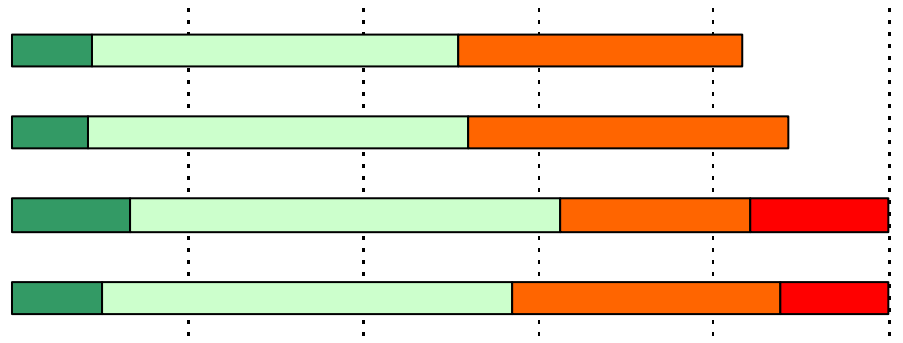


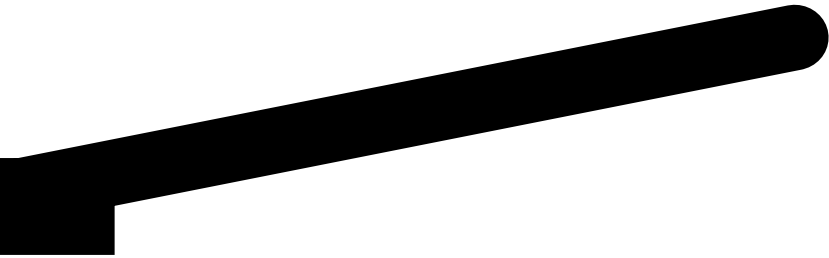
11. The punishment for breaking school rules is the same no matter who you are.

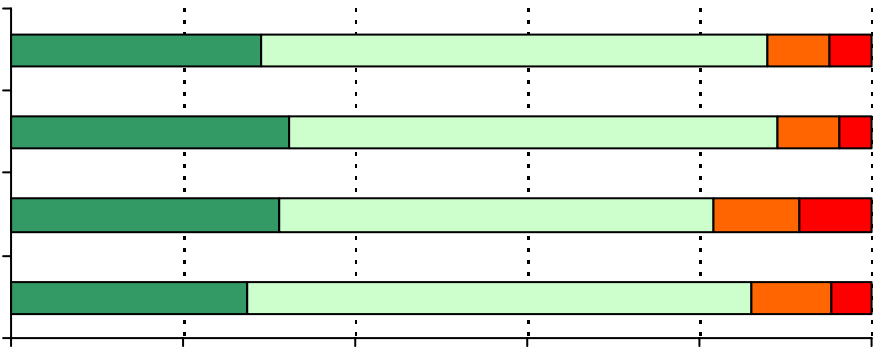


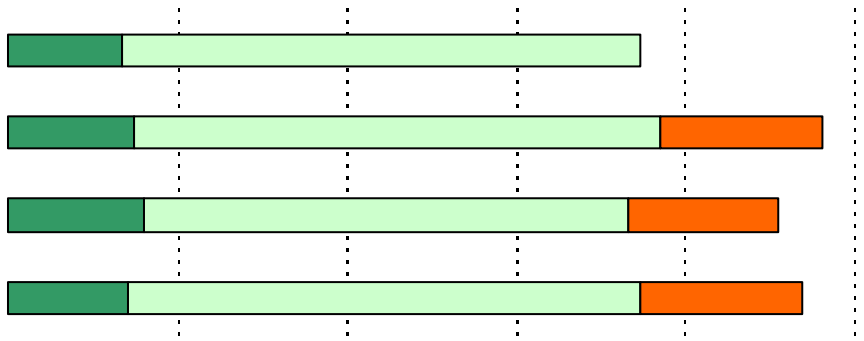
12. The school rules are strictly enforced.



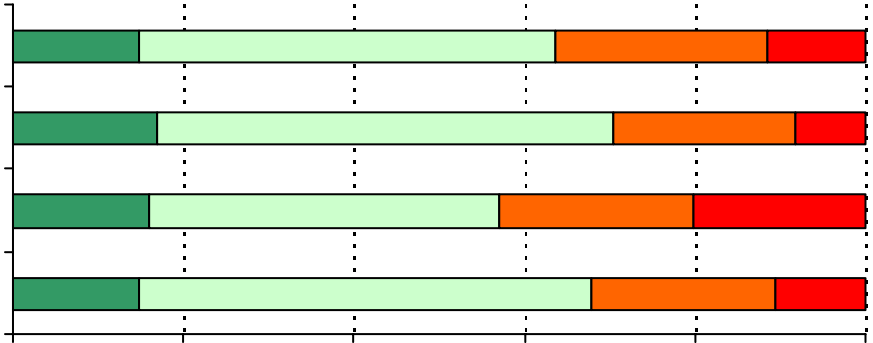




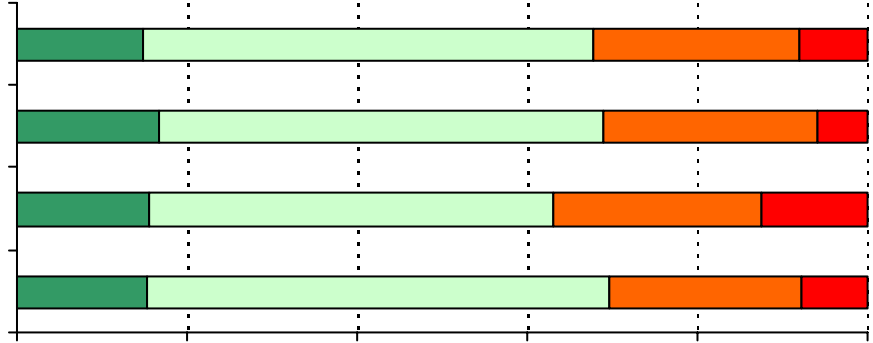




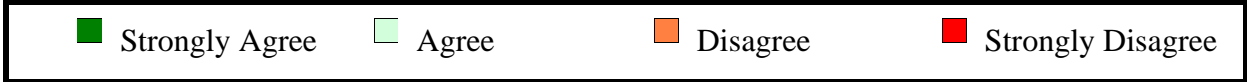
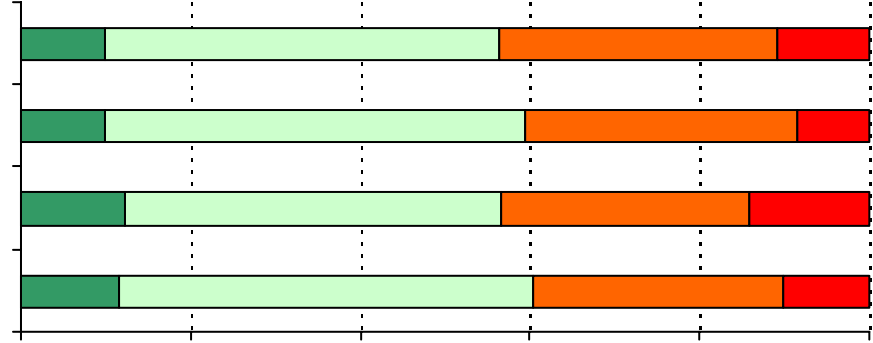
28. My teachers seem to enjoy teaching.

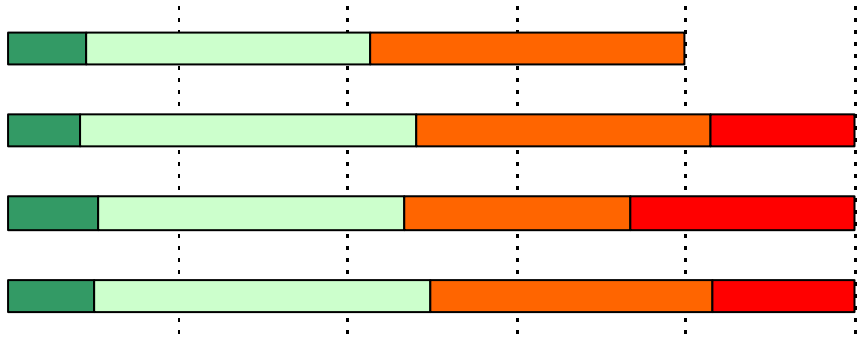


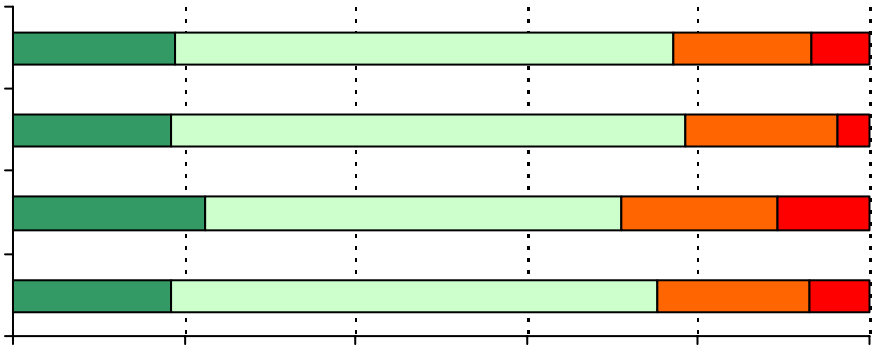
29. I feel successful in my schoolwork.

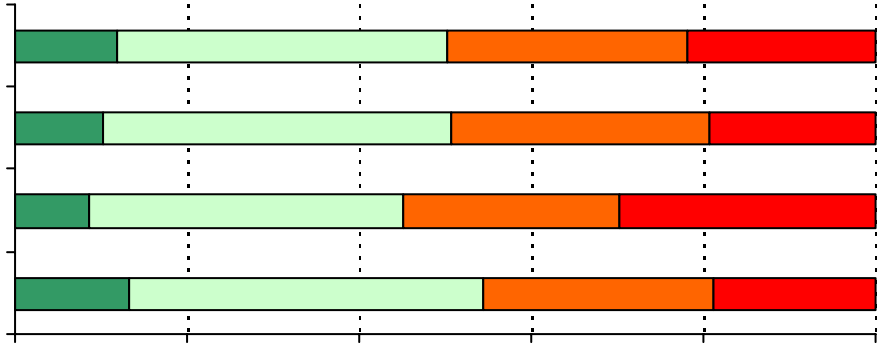


30. My teachers show me ways to judge for myself the quality of my work.









40. My teachers are

