



2006-2007 AISD Parent Survey Results

Highland Park Elementary School

The following report contains the results of the 2006-2007 AISD Parent Survey for your campus and all AISD schools at your level. The first section of this report provides a comparison of the campus demographics and the demographics reported by parents who responded to the survey from your campus. The next section describes the percentages of

How many parents responded to the survey in 2005-2006 and 2006-2007, and how does this compare to the number of students in the population each year?

	Campus	District EL	District MS	District HS
	107			
	512			
	373			
	532			

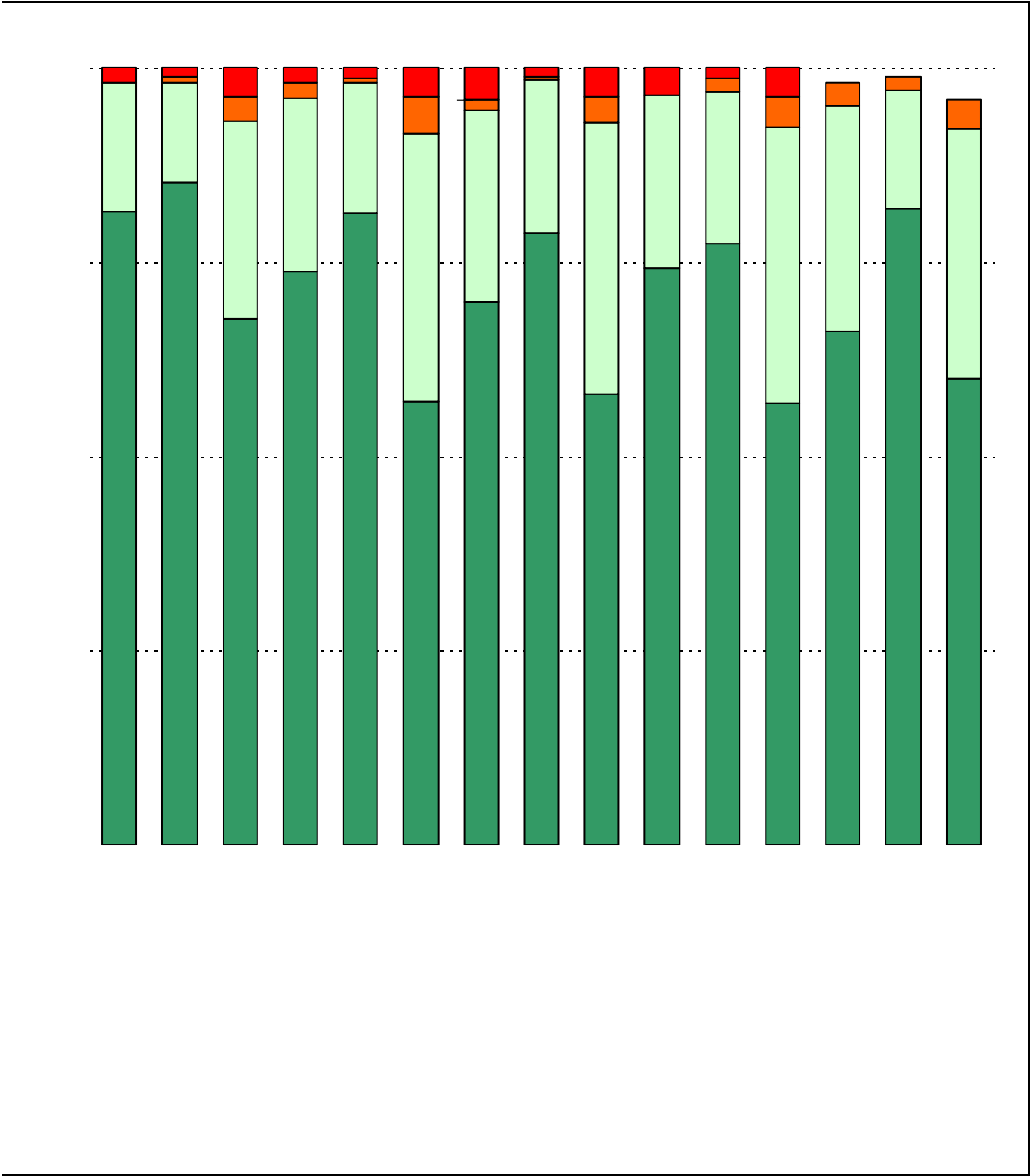
What did parents report as their child's ethnicity, and how does this compare to the ethnic distribution of the student population?

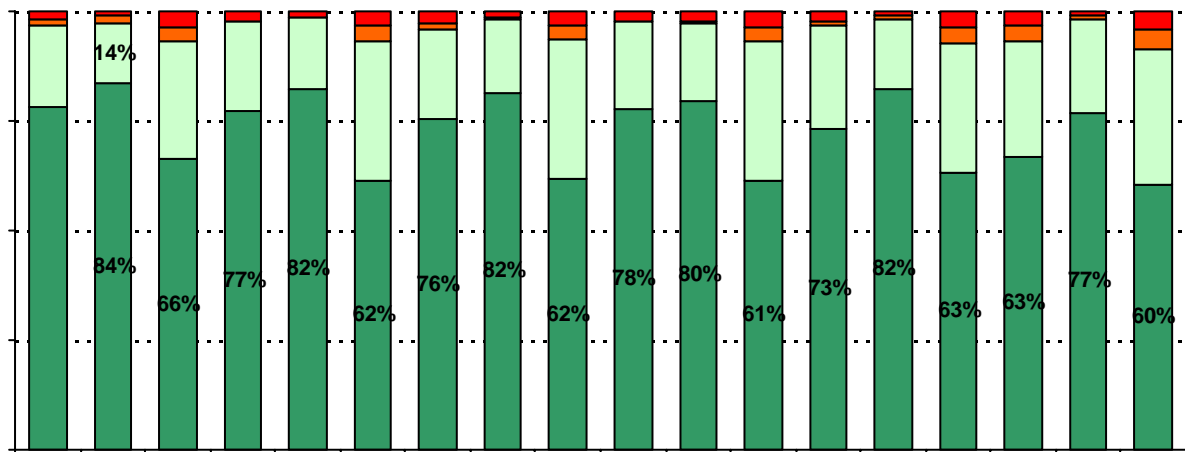
Ethnicity	% of Students, as Reported by Campus Parent Respondents	% of Students in Campus Population
Asian	1.2%	5.8%
Hispanic	5.3%	10.2%
Native American	9.4%	0.0%
White	0.3%	82.0%

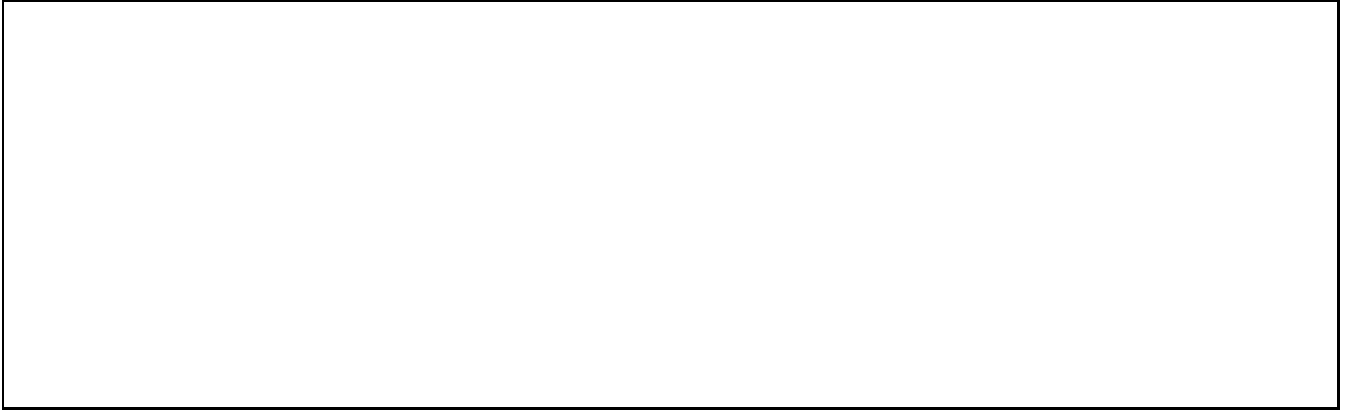
Grade	% of Students, as Reported by Campus Parent Respondents	% of Students in Campus Population
EC	0.0%	0.2%
PK	N/A	N/A
K	19.8%	19.2%
1st	15.3%	18.2%
2nd	13.4%	13.2%
3rd	15.0%	18.0%
4th	21.2%	18.6%
5th	15.3%	12.6%
6th	N/A	N/A

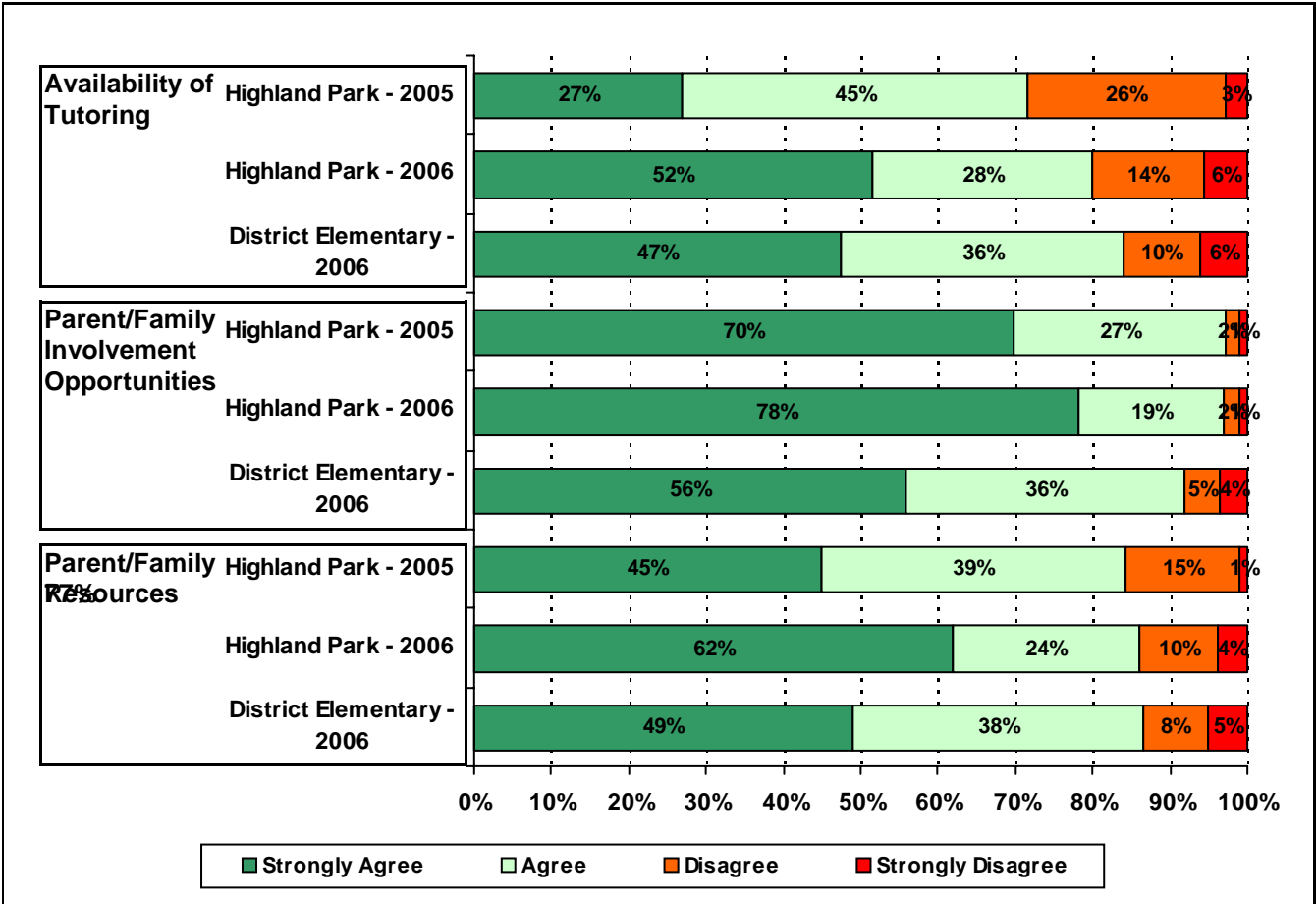
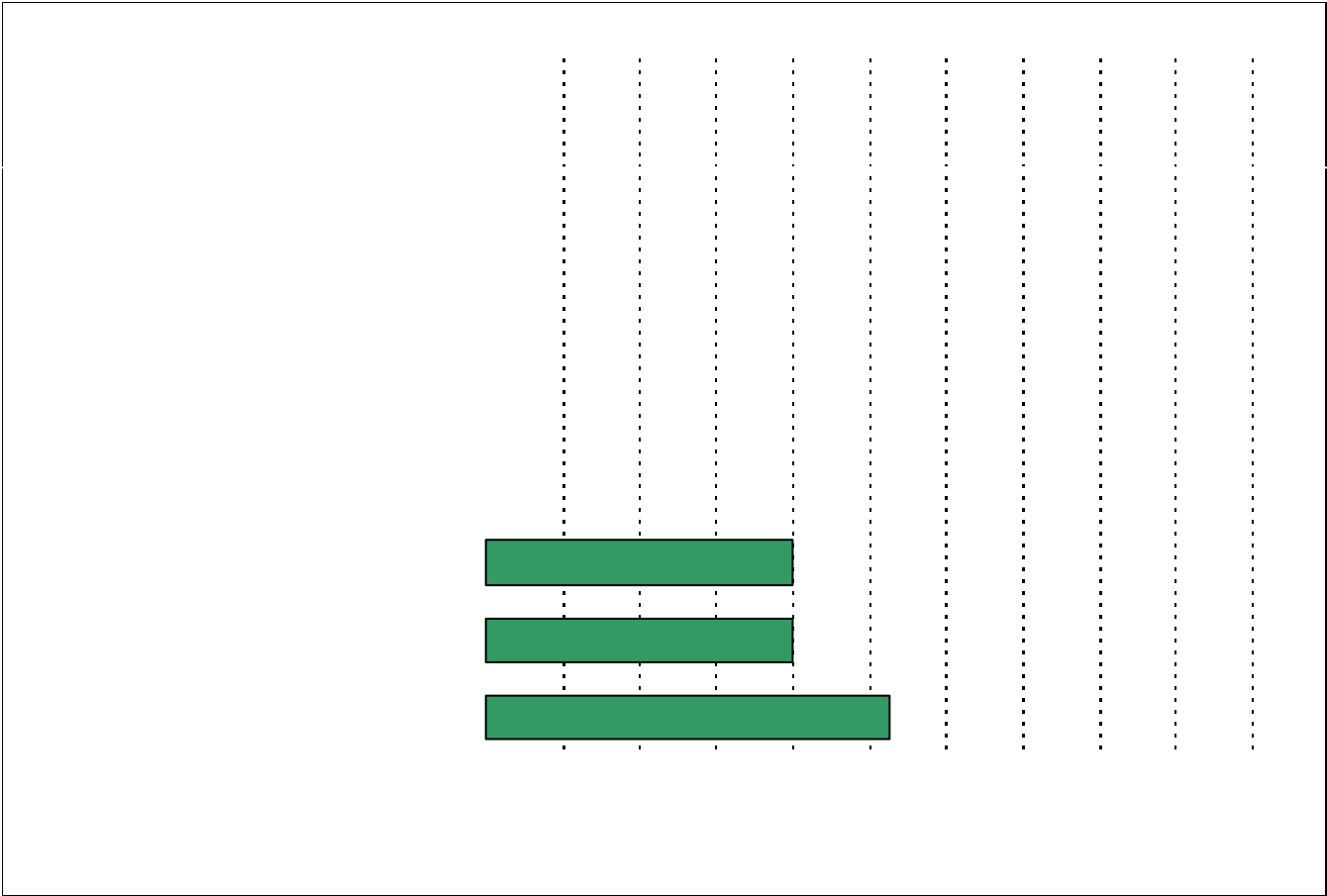
Note: Student population data are based on Fall PEIMS data submitted by the district to TEA, and may differ from the official AEIS report.

USING THE RESULTS OF THE AISD PARENT SURVEY

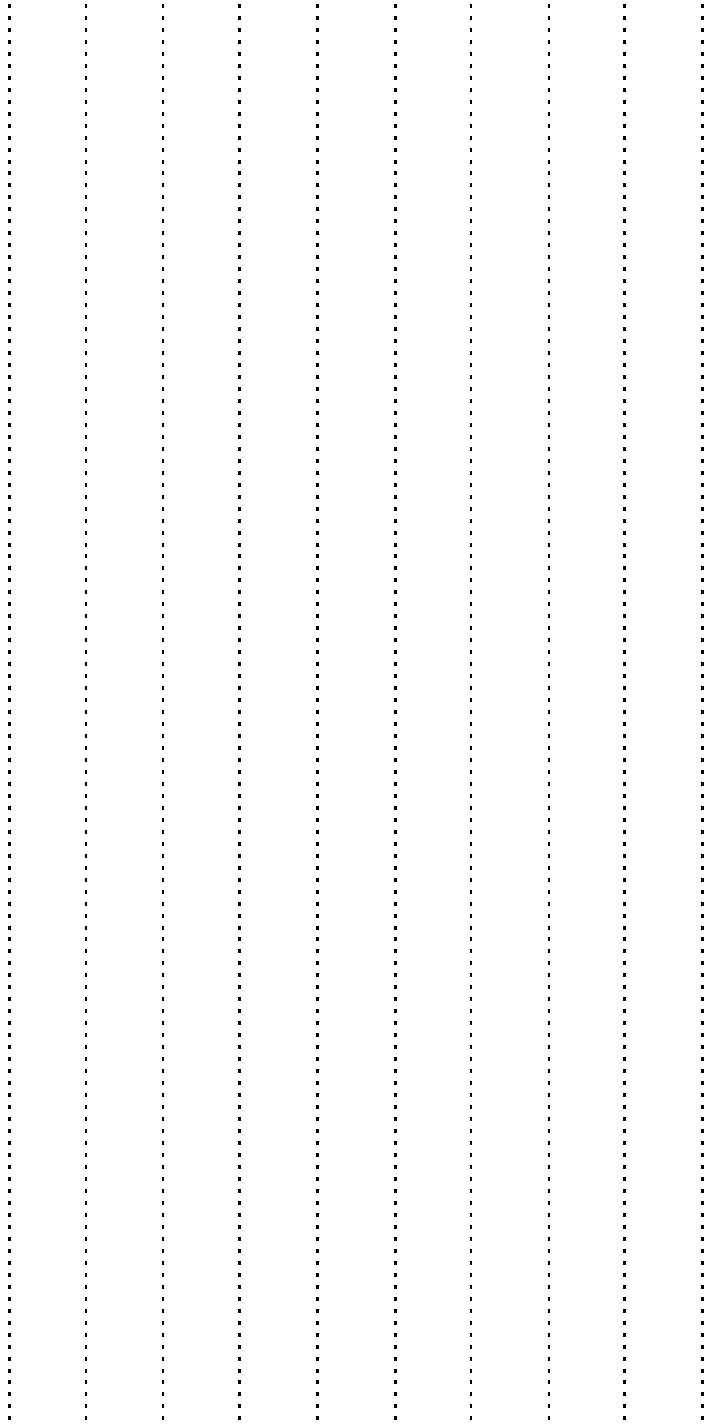


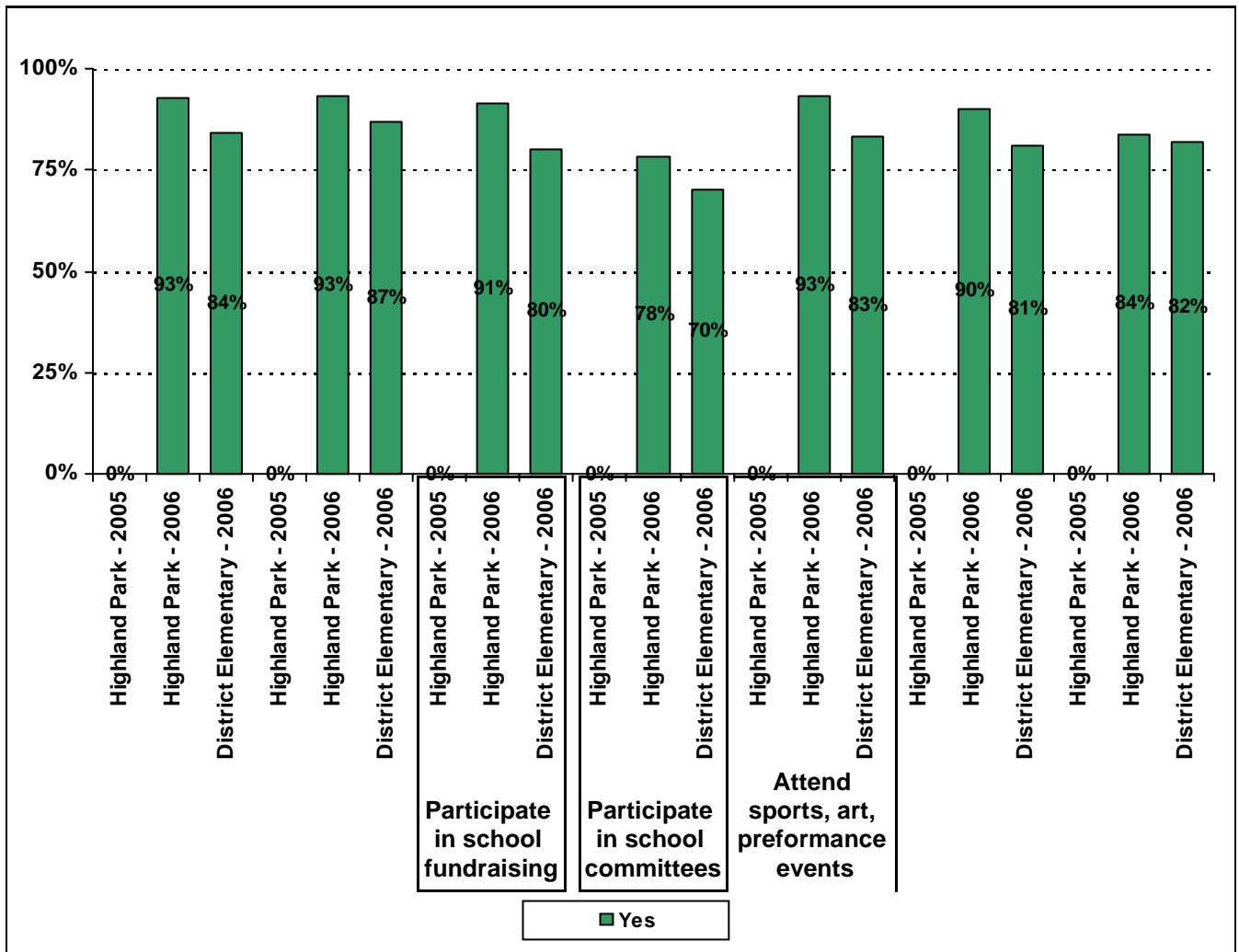


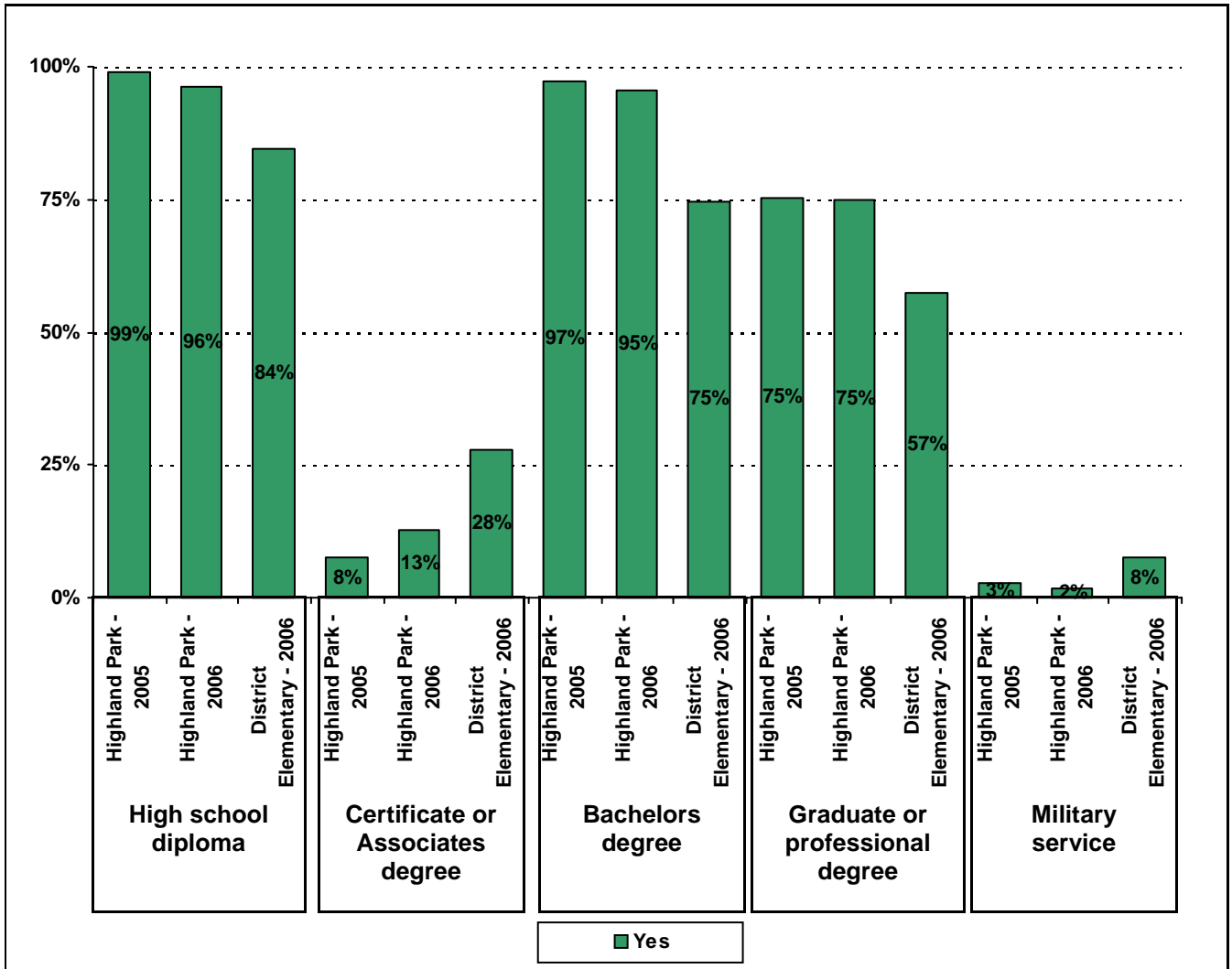




Required







Item Response Details

Number of Highland Park Elementary School Parent Responses, by Response Option

		Strongly Agree	Agree	Disagree	Strongly Disagree	Don't Know/NA
4.	n = 345		2	343		
5a.	n = 368	256	48	5	4	55
5b.	n = 364	171	43	4	3	143
5c.	n = 363	189	47	1	3	123
5d.	n = 364	292	60	2	5	5
5e.	n = 364	310	47	3	4	0
6a.	n = 365	227	54	7	3	74
6b.	n = 364	136	51	4	5	168
6c.	n = 362	165	58	2	3	134
6d.	n = 362	240	67	1	5	49
6e.	n = 366	309	51	1	4	1
7a.	n = 353	160	73	19	6	95
7b.	n = 353	88	56	10	7	192
7c.	n = 356	104	70	11	5	166
7d.	n = 353	163	75	13	8	94
7e.	n = 364	289	56	6	6	7
8a.	n = 358	173	58	3	7	117
8b.	n = 357	106	51	3	7	190
8c.	n = 359	134	55	2	6	162
8d.	n = 358	142	58	7	6	145
8e.	n = 361	274	57	6	7	17
9a.	n = 365	248	48	3	3	63
9b.	n = 363	183	41	1	5	133
9c.	n = 362	203	42	1	3	113
9d.	n = 364	263	51	0	5	45
9e.	n = 364	299	50	6	3	6
9f.	n = 361	241	67	3	3	47
10.	n = 363	61	37	16	12	237
11.	n = 365	254	85	16	3	7
12.	n = 369	287	73	3	3	3

Number of Highland Park Elementary School Parent Responses, by Response Option
(Continued)

		Strongly Agree	Agree	Disagree	Strongly Disagree	Don't Know/NA
13a.	n = 368	282	74	7	3	2
13b.	n = 367	268	74	15	4	6
13c.	n = 366	245	86	14	4	17
14a.	n = 367	129	71	36	14	117
14b.	n = 367	281	67	7	4	8
14c.	n = 369	191	74	31	12	61
15a.	n = 369	245	100	17	6	1
15b.	n = 369	163	90	25	6	85
15c.	n = 368	169	78	20	7	94
15d.	n = 369	158	63	11	5	132
15e.	n = 370	247	103	15	4	1
20.	n = 373	<p><i>Item 20 did not use the "Strongly Agree" to "Strongly Disagree" scale. Numbers below reflect the number of parents selecting each goal. These numbers will not sum to the total number of</i></p>				