

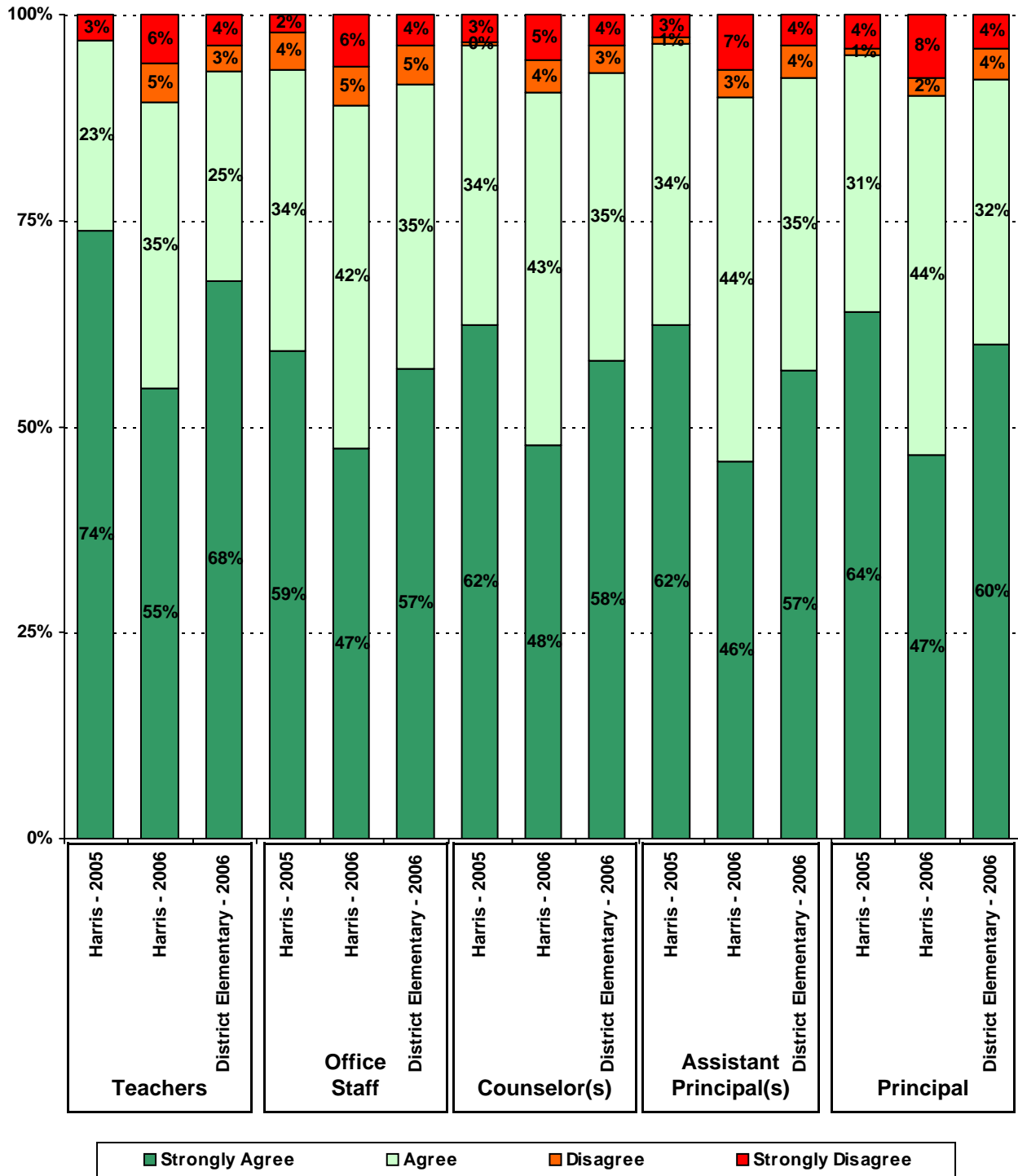
**How many parents responded to the survey in 2005-2006 and 2006-2007, and how does this compare to the number of students in the population each year?**

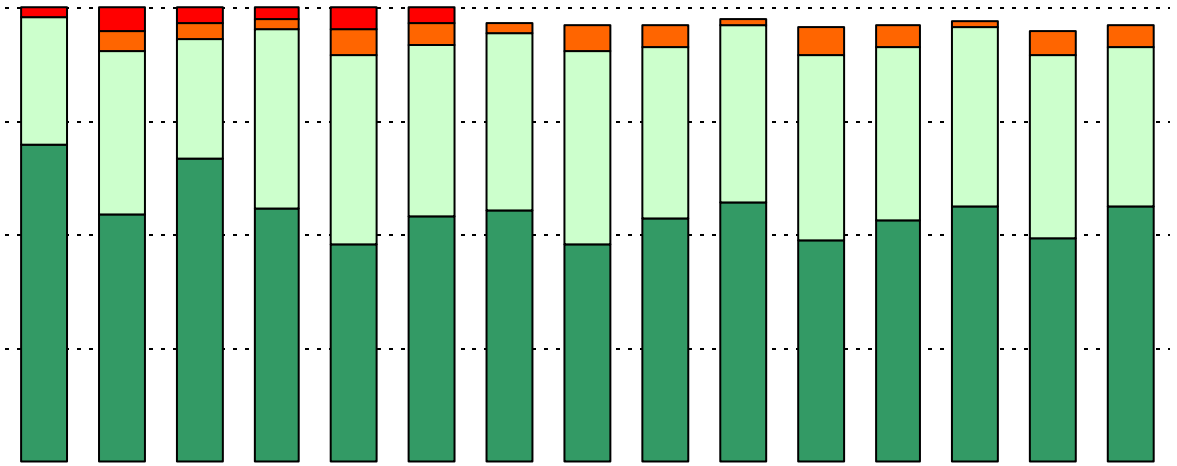
|  | <b>Campus</b> | <b>District<br/>EL</b> | <b>District<br/>MS</b> | <b>District<br/>HS</b> |
|--|---------------|------------------------|------------------------|------------------------|
|  | 314           |                        |                        |                        |
|  | 688           |                        |                        |                        |
|  | <b>45.6%</b>  |                        |                        |                        |
|  | 491           |                        |                        |                        |
|  | 709           |                        |                        |                        |
|  | <b>69.3%</b>  |                        |                        |                        |

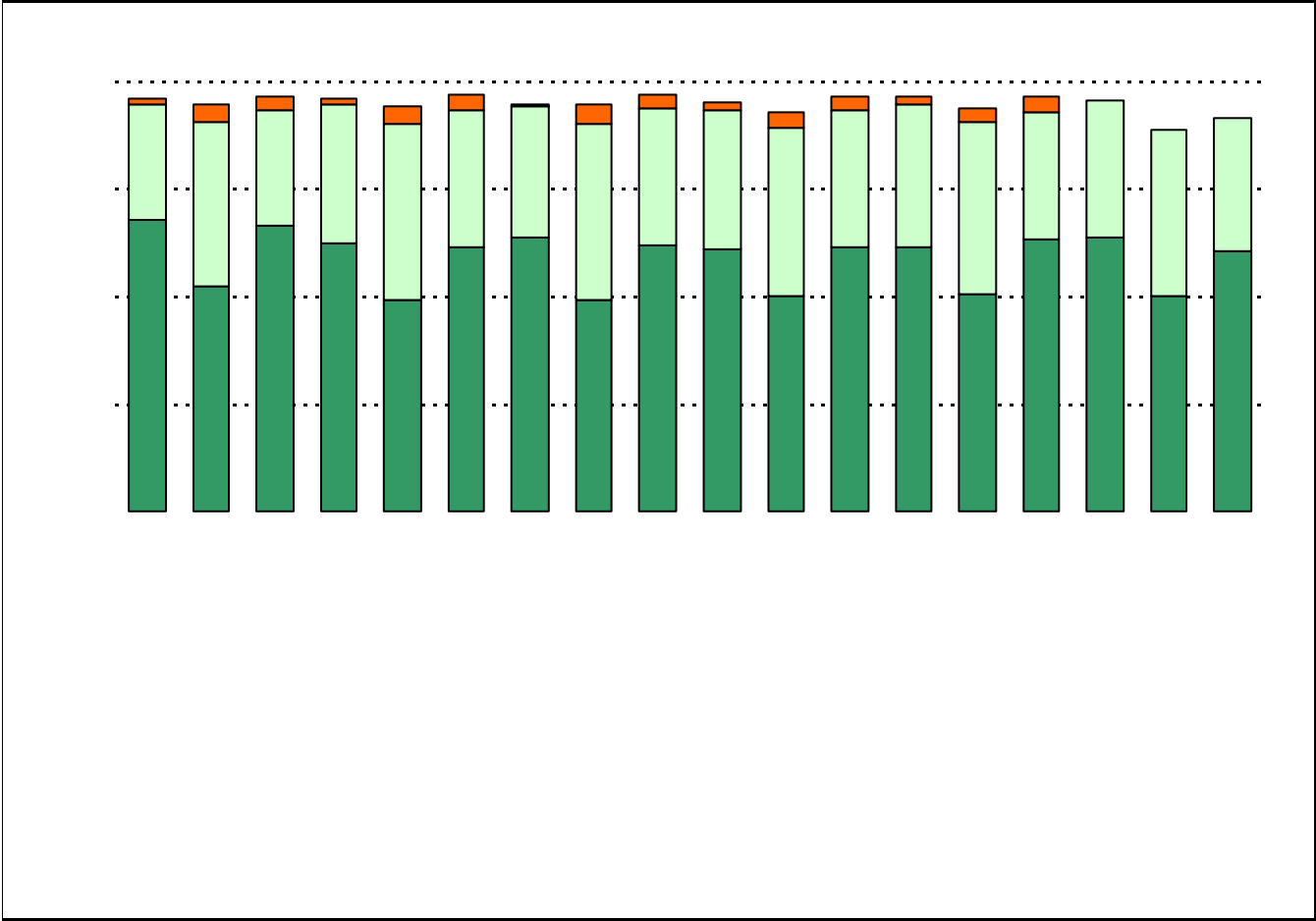
| <b>Grade</b> | <b>% of Students, as Reported by Campus Parent Respondents</b> | <b>% of Students in Campus Population</b> |
|--------------|--|---|
| <b>EC</b>    | 0.2%   | 1.3%                                      |
| <b>PK</b>    | 19.1%  | 16.9%                                     |
| <b>K</b>     | 15.6%  | 18.2%                                     |
| <b>1st</b>   | 18.0%  | 15.5%                                     |
| <b>2nd</b>   | 12.5%  |   |
| <b>3rd</b>   | 6.4%   |   |
| <b>4th</b>   | 15.6%  |   |

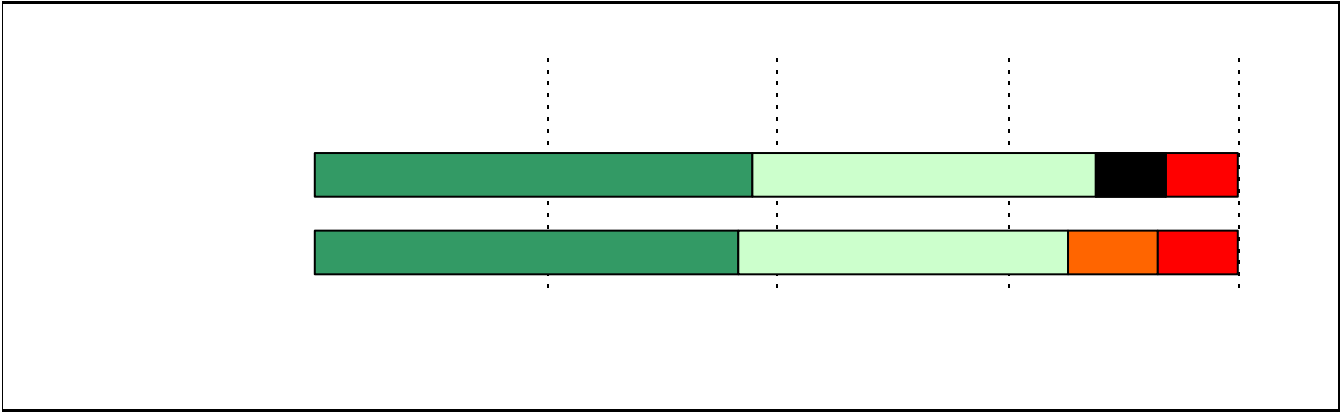
**USING THE RESULTS OF THE AISD PARENT SURVEY**

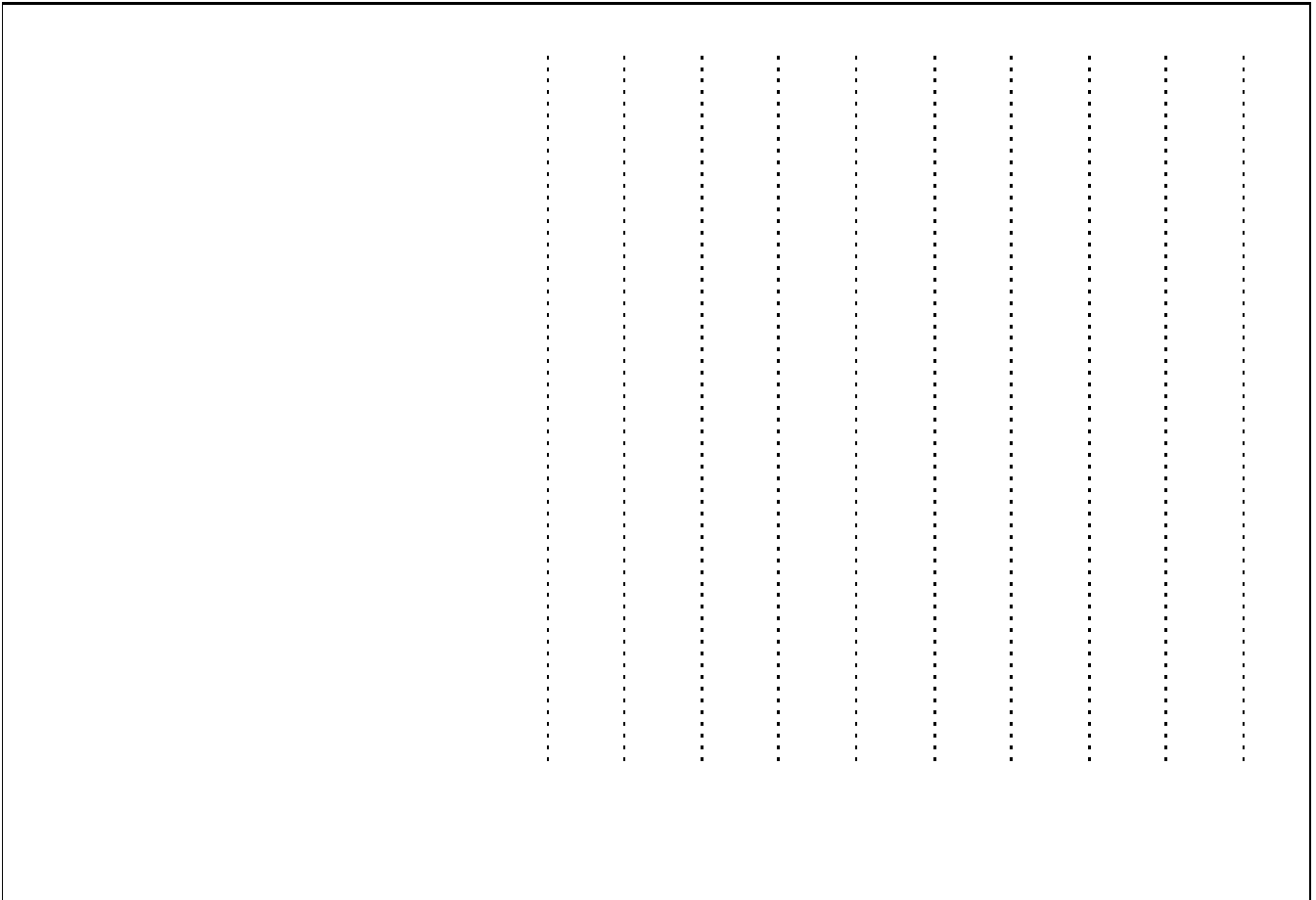
5. The following school staff treat me with courtesy and respect.





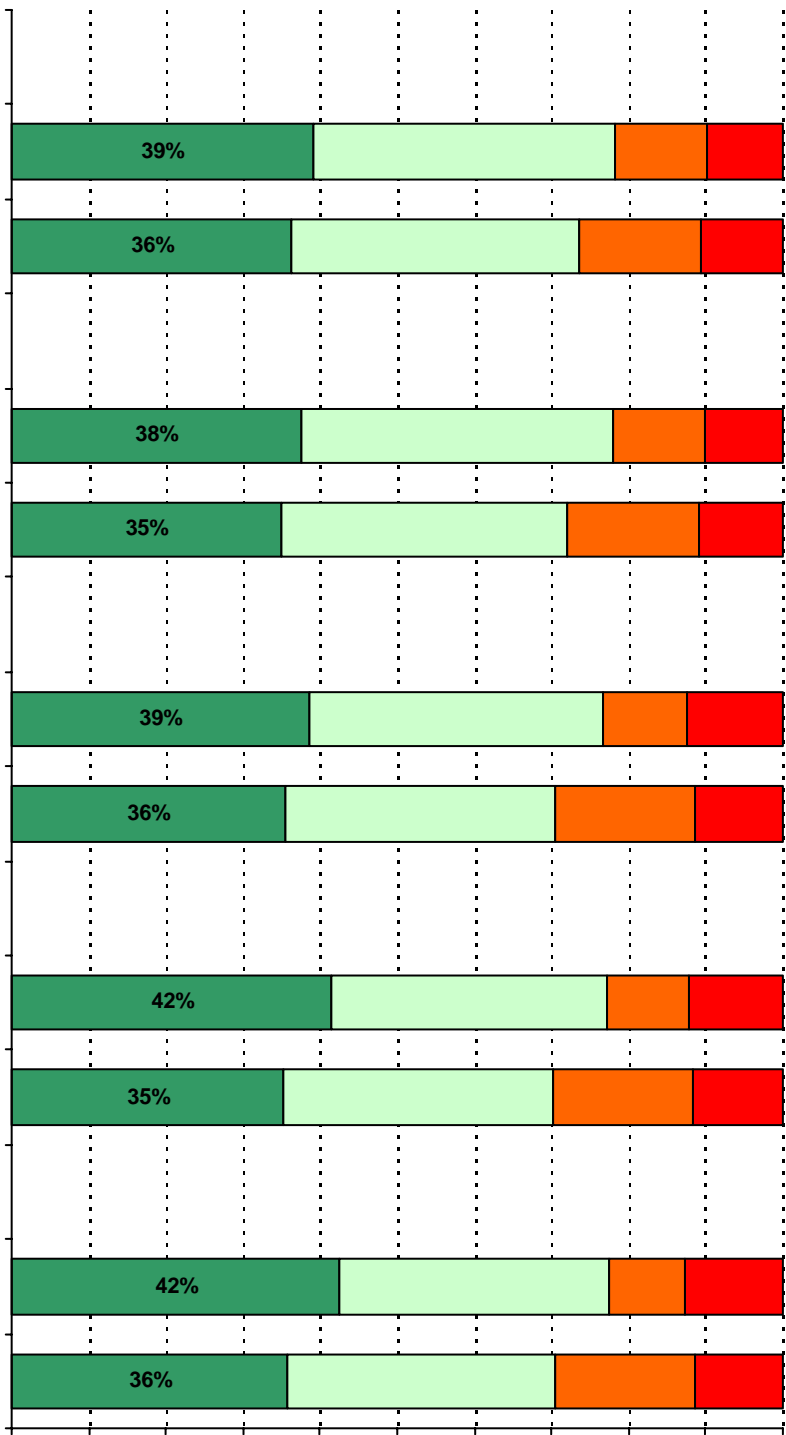


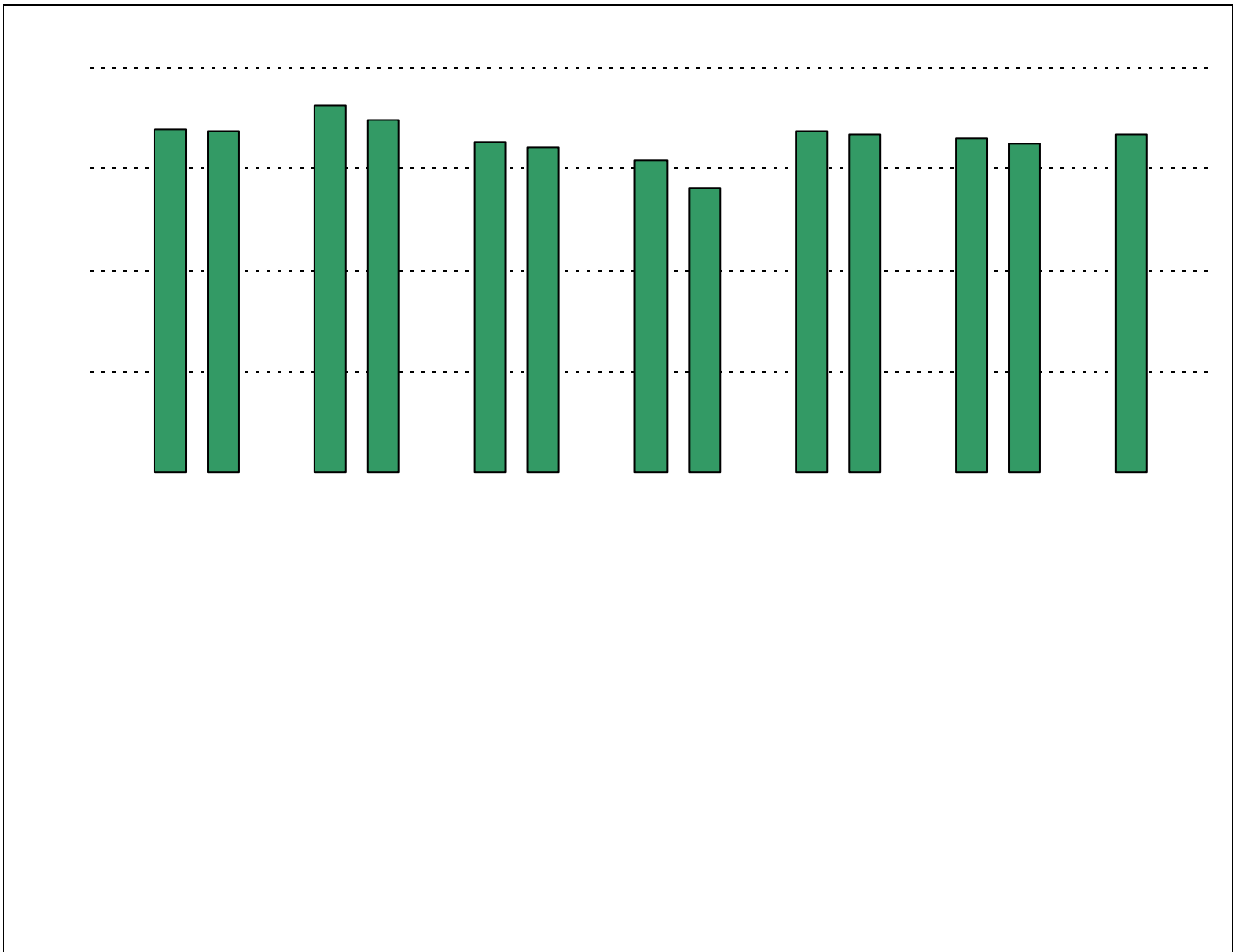




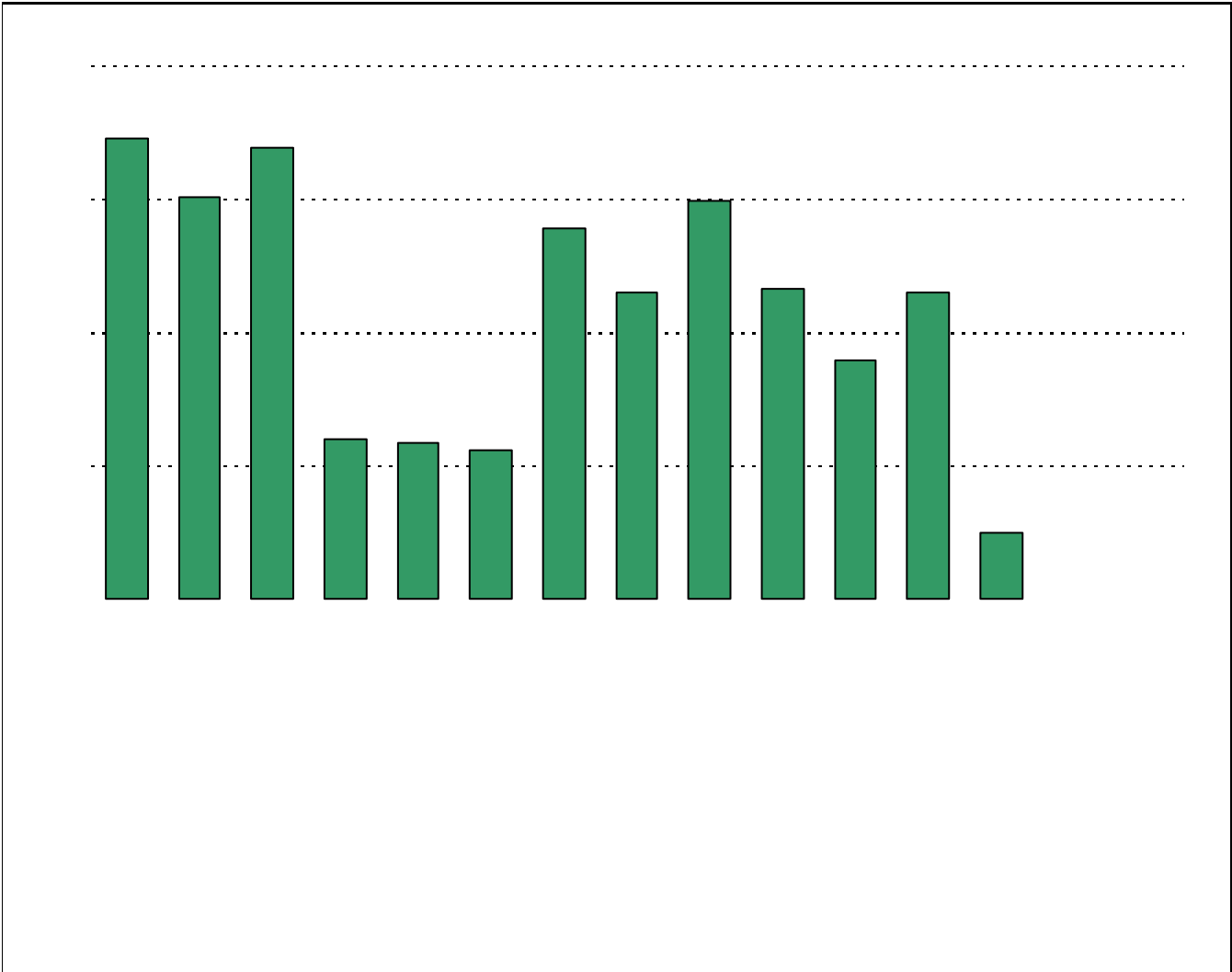
**Required  
curriculum**

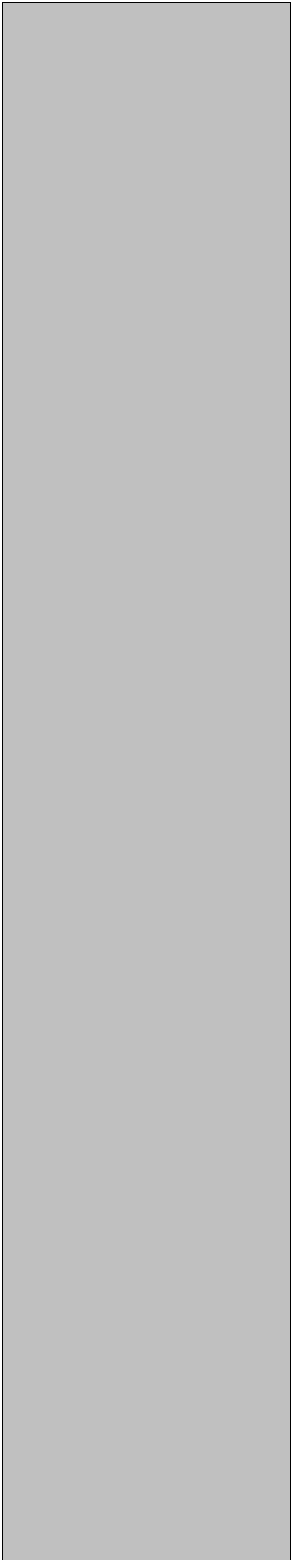






\* Item(s) #17, #18, #19 added to the survey in 2006





Number of Harris Elementary School Parent Responses, by Response Option  
(Continued)

|      |         | Strongly Agree   | Agree                                 | Disagree                | Strongly Disagree                    | Don't Know/NA           |
|------|---------|--|---------------------------------------|-------------------------|--------------------------------------|-------------------------|
| 13a. | n = 460 | 232  | 169                                   | 16                      | 21                                   | 22                      |
| 13b. | n = 444 | 215  | 172                                   | 18                      | 23                                   | 16                      |
| 13c. | n = 430 | 186  | 159                                   | 23                      | 23                                   | 39                      |
| 14a. | n = 460 | 183  | 159                                   | 32                      | 32                                   | 54                      |
| 14b. | n = 457 | 180  | 184                                   | 25                      | 24                                   | 44                      |
| 14c. | n = 457 | 186  | 159                                   | 28                      | 26                                   | 58                      |
| 15a. | n = 469 | 239  | 169                                   | 26                      | 21                                   | 14                      |
| 15b. | n = 438 | 174  | 176                                   | 27                      | 19                                   | 42                      |
| 15c. | n = 446 | 194  | 165                                   | 24                      | 19                                   | 44                      |
| 15d. | n = 434 | 171  | 166                                   | 27                      | 25                                   | 45                      |
| 15e. | n = 448 | 221  | 168                                   | 23                      | 18                                   | 18                      |
| 16a. | n = 451 | 118  | 118                                   | 36                      | 30                                   | 149                     |
| 16b. | n = 427 | 103  | 111                                   | 32                      | 28                                   | 153                     |
| 16c. | n = 434 | 106  | 104                                   | 30                      | 34                                   | 160                     |
| 16d. | n = 429 | 115  | 99                                    | 29                      | 34                                   | 152                     |
| 16e. | n = 430 | 118  | 97                                    | 28                      | 35                                   | 152                     |
| 17.  | n = 477 | 273  | 131                                   | 30                      | 22                                   | 21                      |
| 18.  | n = 476 | 274  | 140                                   | 20                      | 29                                   | 13                      |
|      |         | Yes  | No                                    |                         |                                      |                         |
| 19a. | n = 428 | 322  | 106                                   |                         |                                      |                         |
| 19b. | n = 451 | 381  | 70                                    |                         |                                      |                         |
| 19c. | n = 422 | 294  | 128                                   |                         |                                      |                         |
| 19d. | n = 421 | 259  | 162                                   |                         |                                      |                         |
| 19e. | n = 418 | 297  | 121                                   |                         |                                      |                         |
| 19f. | n = 437 | 278  | 145                                   |                         |                                      |                         |
| 19g. | n = 437 | 310  | 127                                   |                         |                                      |                         |
| 20.  | n = 491 | <i>Item 20 did not use the "Strongly Agree" to "Strongly Disagree" scale. Numbers below reflect the number of parents selecting each goal. These numbers will not sum to the total number of item respondents because parents may select multiple goals.</i> |                                       |                         |                                      |                         |
|      |         | <b>High School diploma</b>   | <b>Certificate/ Associates degree</b> | <b>Bachelors degree</b> | <b>Graduate/ Professional degree</b> | <b>Military service</b> |
|      |         | 370  | 144                                   | 282                     | 219                                  | 53                      |