

How many parents responded to the survey in 2004-2005 and 2005-2006, and how does this compare to the number of students in the population each year?

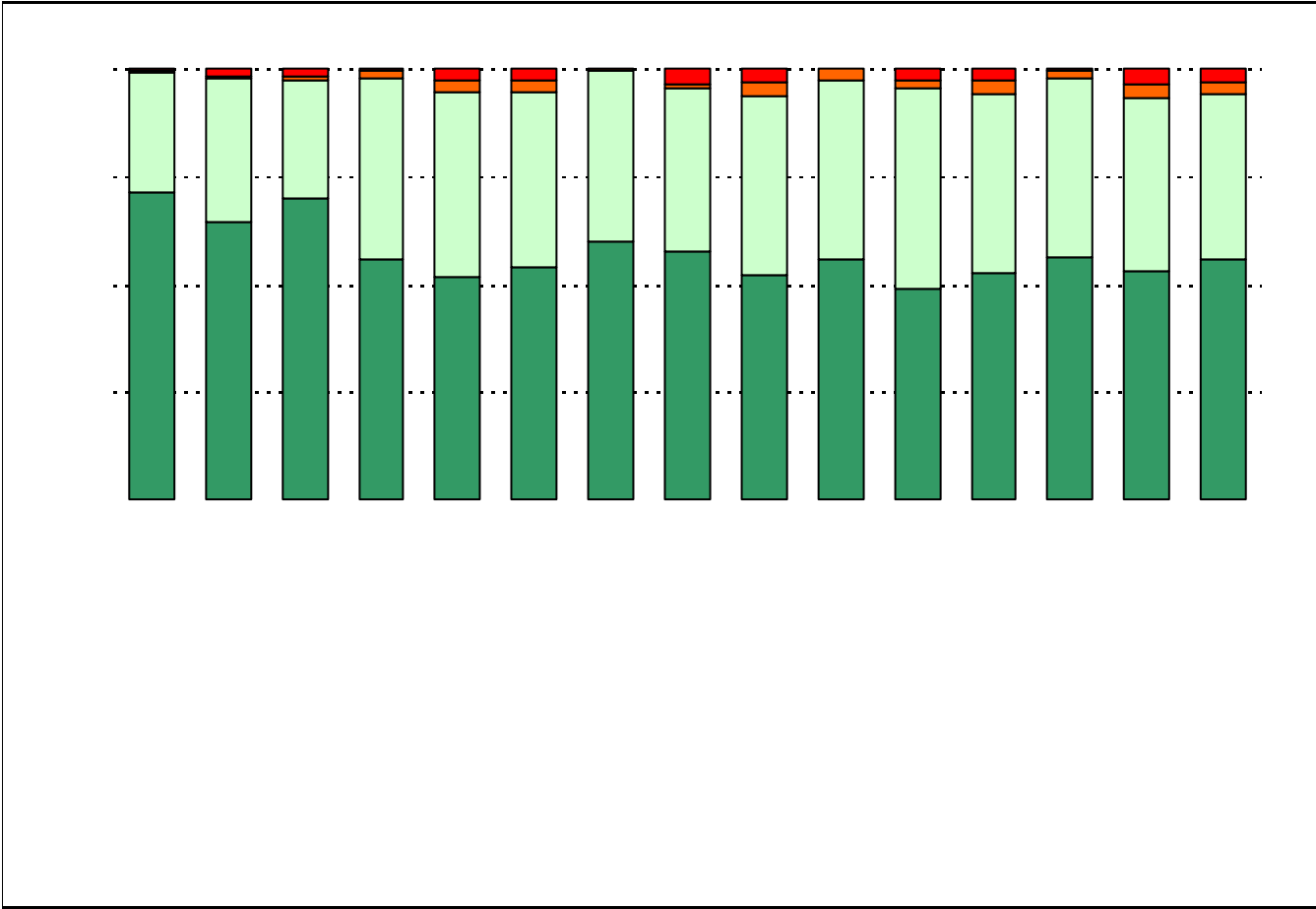
	Campus	District EL	District MS	District HS
	35.2%			
	34.3%			

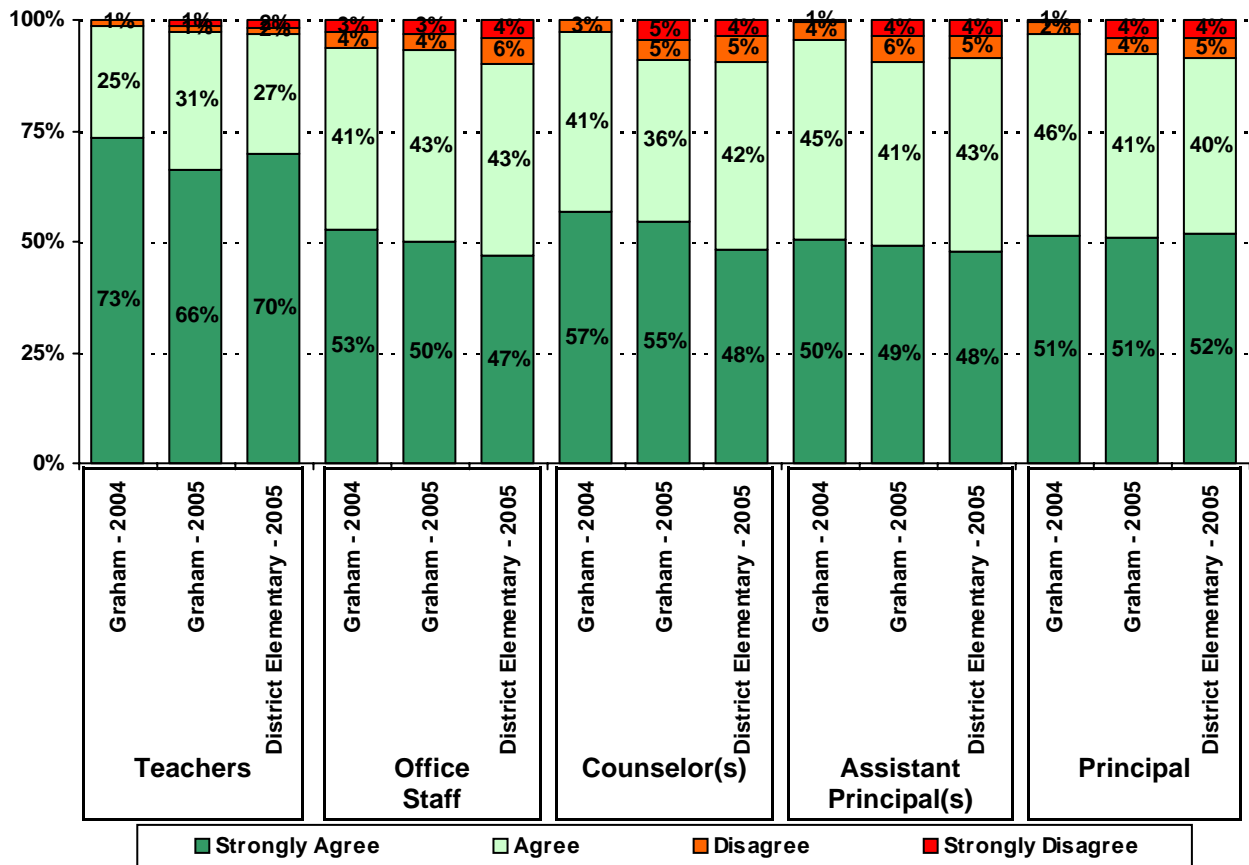


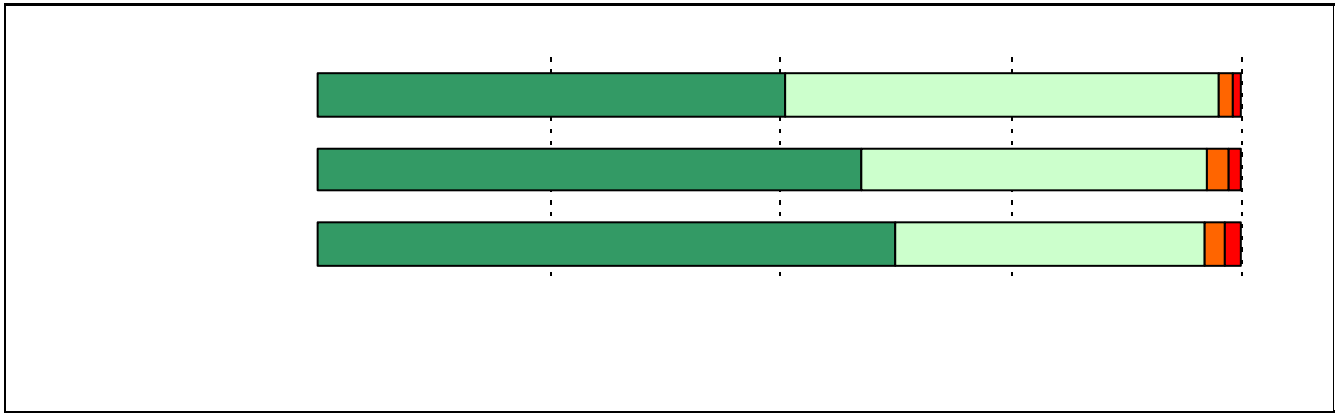
What did parents report as their child's grade, and how does this compare to the grade level distribution of the student population?

Grade	% of Students, as Reported by Campus Parent Respondents	% of Students in Campus Population
EC		
PK		
K		
1st		
2nd		
3rd		
4th		
5th		
6th		

USING THE RESULTS OF THE AISD PARENT SURVEY



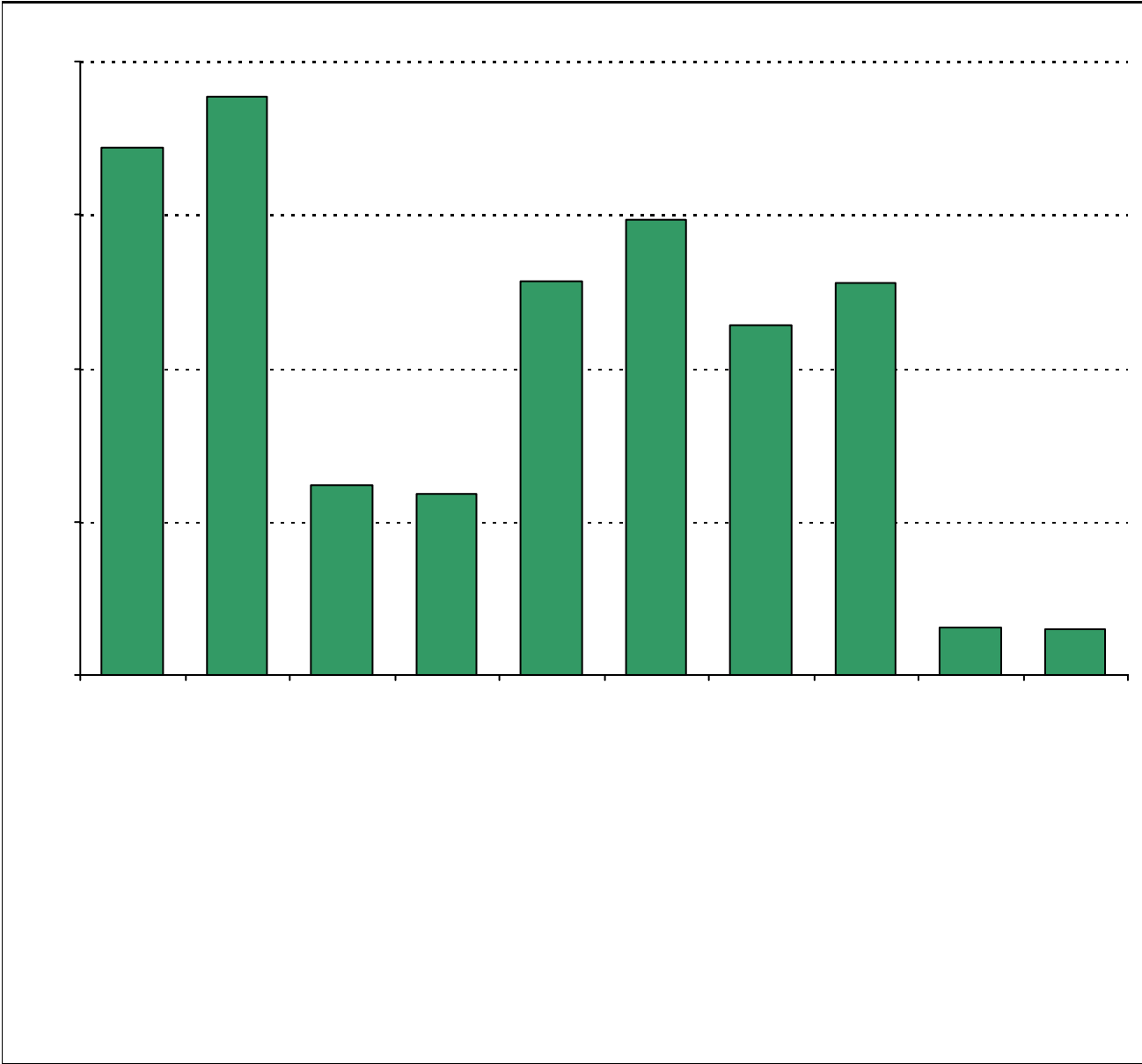




.....

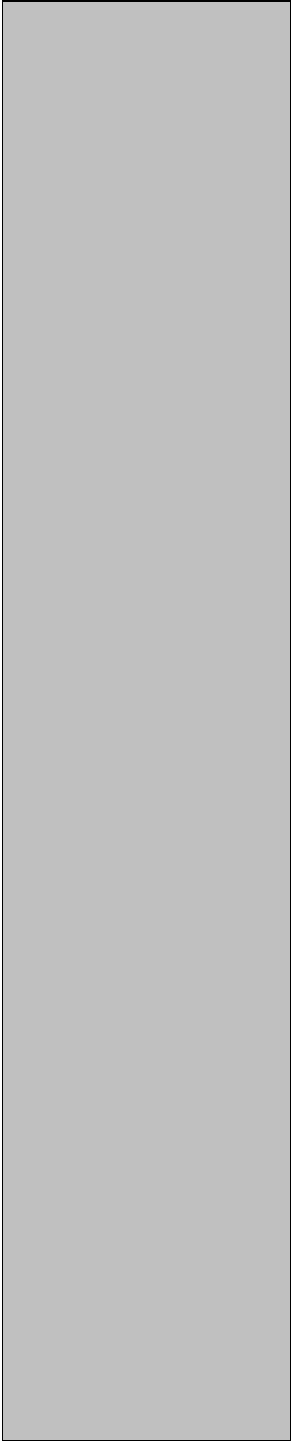


Required



Disagree

Strongly
Disagree



11a.	n = 208	
11b.	n = 205	
11c.	n = 204	
11d.	n = 205	
11e.	n = 201	
11f.	n = 208	
11i.	n = 188	
12a.	n = 199	
12b.	n = 204	
12c.	n = 195	
12d.	n = 199	
13a.	n = 214	n = 199