

Govalle Elementary School

	127
	418
	88
	390

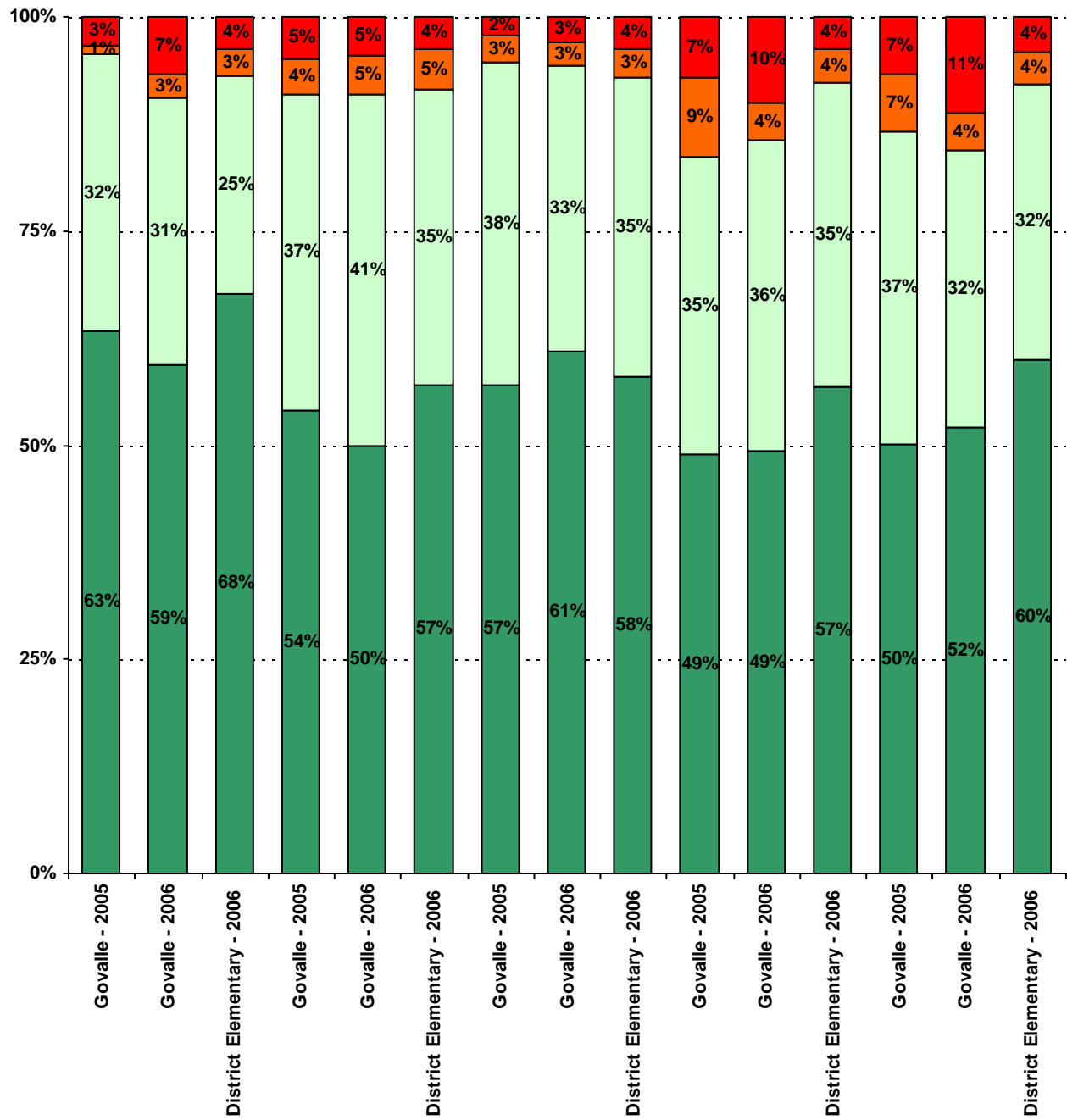
	0.0%	1.5%
	11.4%	12.3%
	10.1%	14.9%
	16.5%	14.4%
	15.2%	19.2%
	22.8%	14.6%
	5.1%	12.3%
	19.0%	10.8%
	N/A	N/A

Note: Student population data are based on Fall PEIMS data submitted by the district to TEA, and may differ from the official AEIS report.

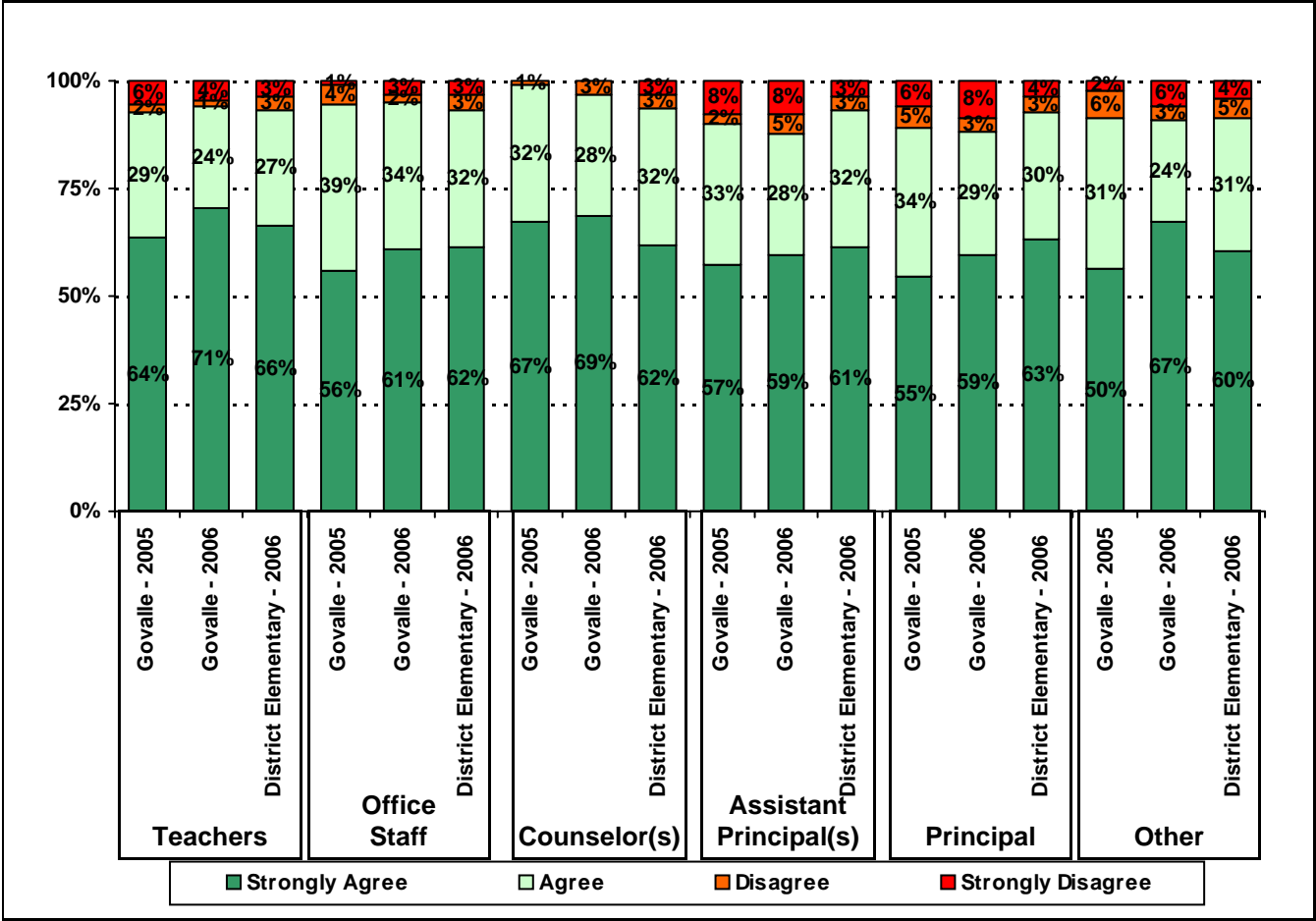
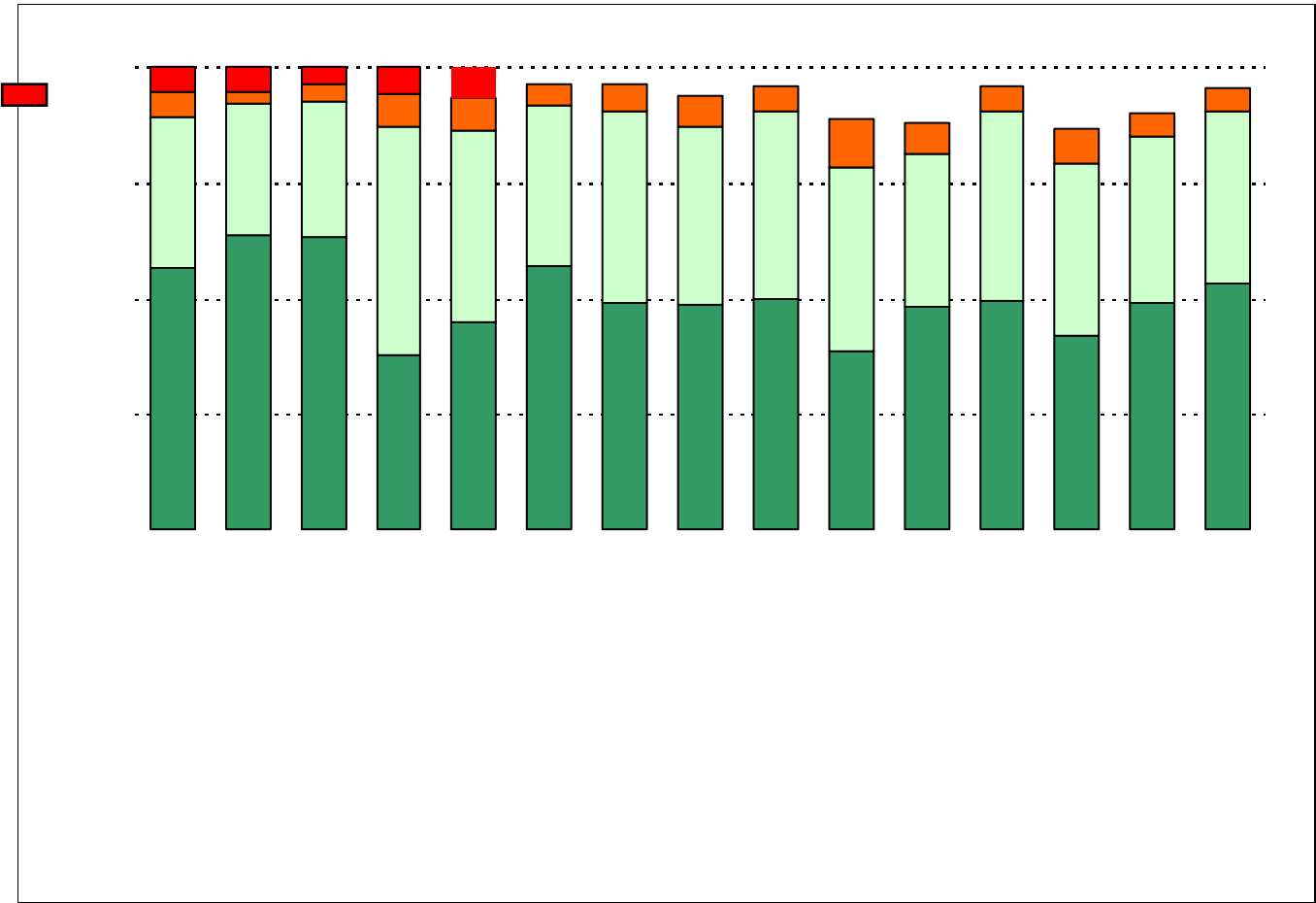
Each survey item is presented below, followed by a bar graph containing your school’s results for two years and this year’s results for all campuses at your level. You will be able to identify areas in which your school’s results have changed over time, and you will be able to compare the responses of your school’s parents to those of parents at your level district-wide.

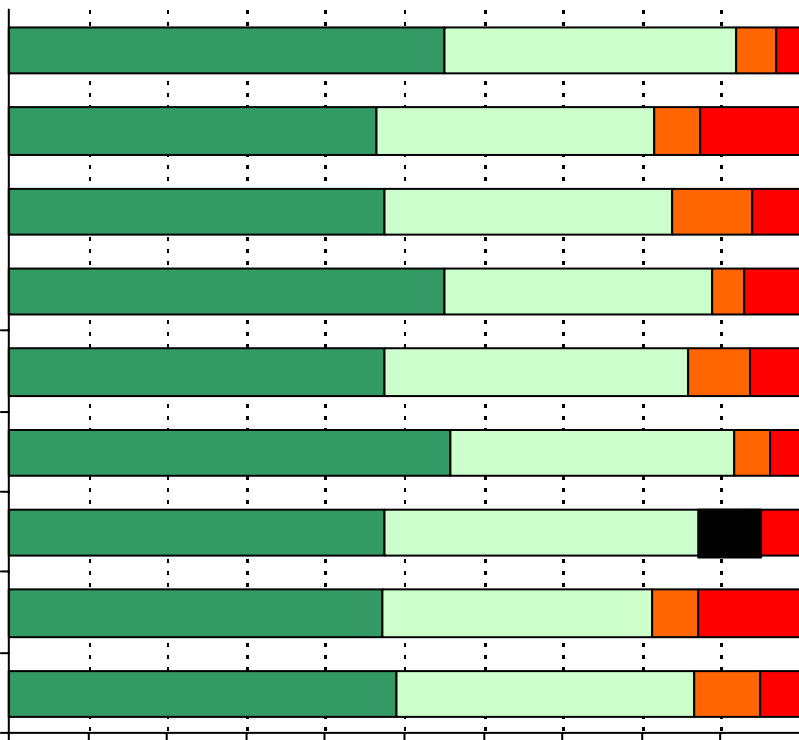
Please examine your results to determine areas of strength and opportunities for improvement. Areas of strength can be identified by large percentages of parents who “Strongly Agree” or “Agree” with a statement. Opportunities for improvement can be identified by large percentages of parents who “Disagree” or “Strongly Disagree” with a statement. In addition, please look for patterns in which one staff category consistently receives more positive or negative responses than other staff categories. This will help you to identify opportunities for praise and areas in which training may be necessary. District responses for all schools at your level are also provided for comparison with 2006-2007 responses from your school. If your campus percentages are very different from the percentages reported by parents district-wide, please consider potential reasons for discrepancies.

Longitudinal data are provided, when available. It is important to look at the responses from year to



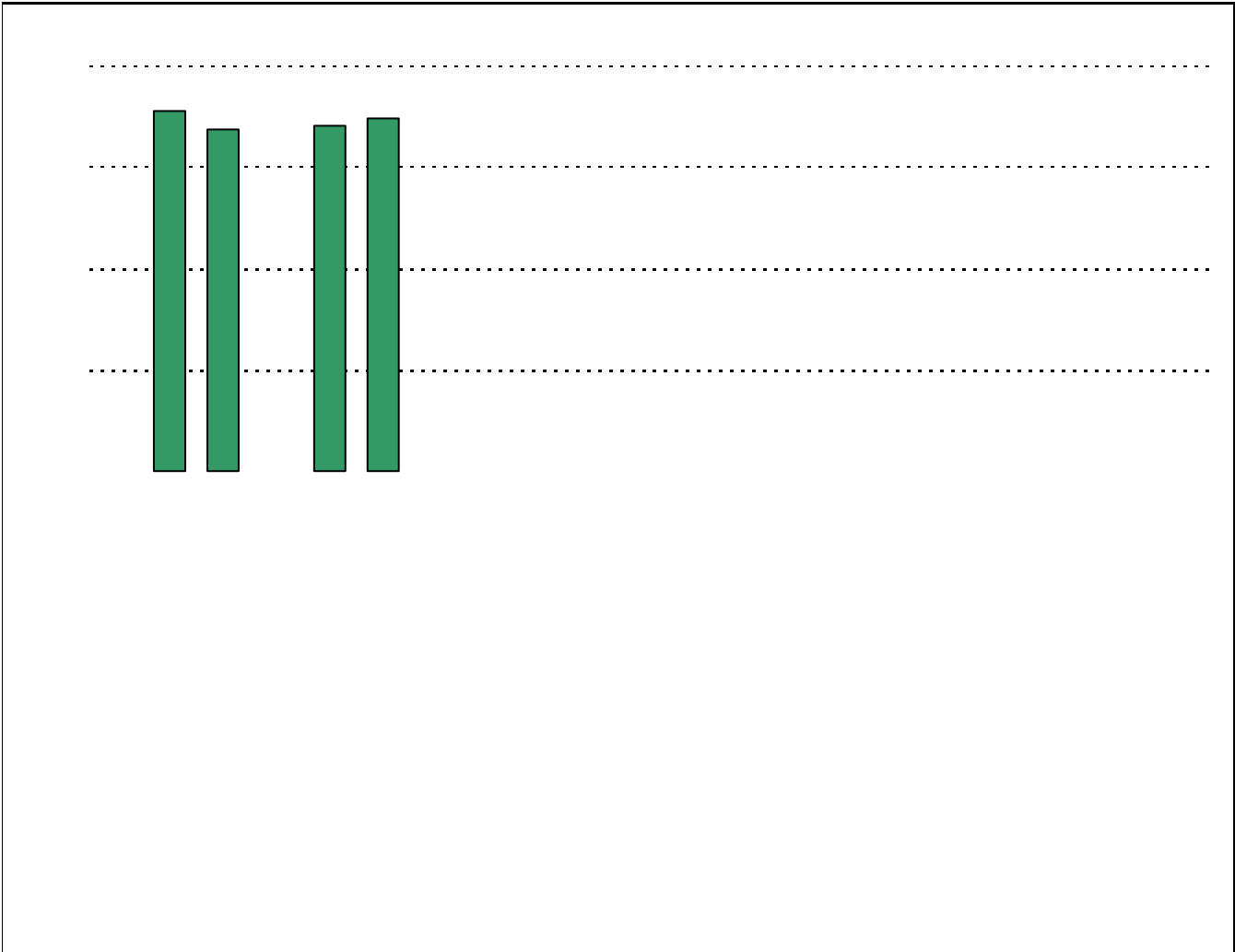






**Required
curriculum**







Number of Govalle Elementary School Parent Responses, by Response Option

		0	61		
	37	23	3	8	6
	34	25	3	7	4
	42	23	2	2	3
	33	27	3	3	4
	44	23	2	5	2
	30	22	8	6	3
	34	23	4	7	3
	41	21	2	2	1
	34	26	5	3	1
	48	23	2	3	2
	33	16	3	12	3
	29	17	4	10	2
	38	18	4	4	1
	26	23	4	6	4
	50	19	2	4	0
	29	21	3	6	7
	28	19	4	7	7
	30	24	4	4	5
	26	24	4	4	4
	47	21	2	4	4
	35	17	2	5	5
	38	18	3	5	4
	44	18	2	0	2
	36	20	1	2	4
	48	16	1	3	2
	45	16	2	4	5
	36	26	5	5	7
	43	22	3	5	2
	38	26	4	6	1

Number of Govalle Elementary School Parent Responses, by Response Option
(Continued)

	43	22	3	2	5
	39	27	6	5	1
	36	20	7	8	3
	33	25	4	9	7
	37	30	6	5	0
	33	24	4	9	6
	44	21	3	6	3
	36	24	4	3	6
	36	24	4	4	4
	36	20	4	2	8
	42	19	3	4	6
	<p><i>Item 20 did not use the "Strongly Agree" to "Strongly Disagree" scale. Numbers below reflect the number of parents selecting each goal. These numbers will not sum to the total number of</i></p> <p><i>2025-2026 Strategic Plan 2025-2026 Strategic Plan 2025-2026 Strategic Plan 2025-2026 Strategic Plan 2025-2026 Strategic Plan</i></p> <p><i>Stro</i></p>				