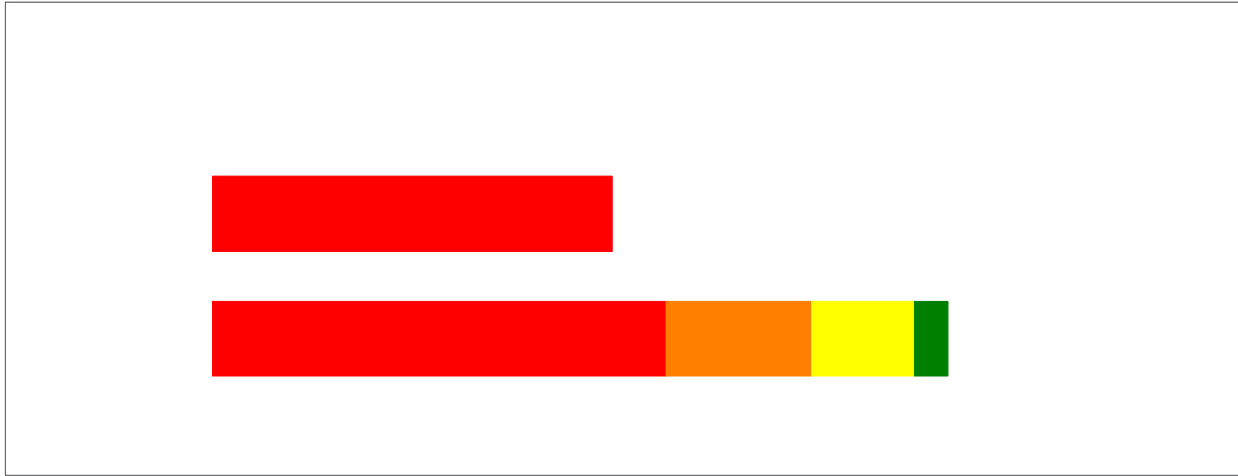


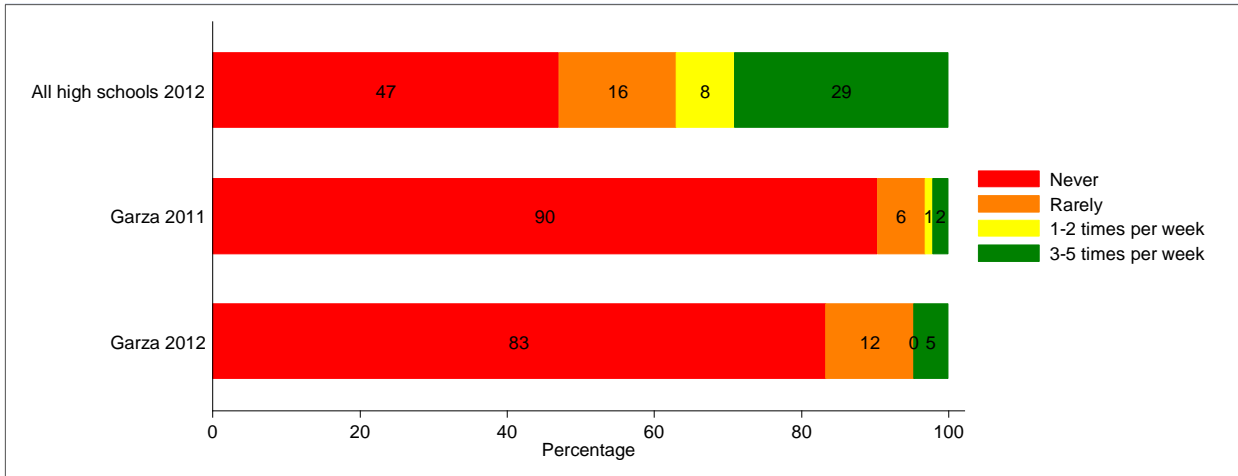


Every year a self-report student survey of substance use and school safety is administered to a random, representative sample of AISD students. The survey is used to track student knowledge, attitudes, and self-reported behavior over time. In the spring of 2012 a sample of 8,725 students in grades 6-12 yielding a response rate of 74%.¹ All item results are attached.

Q5. How often do you participate in other after school programs (e.g. clubs, art, technology, leadership, dance, etc.) ?



Q6. How often do you participate in organized school sports?

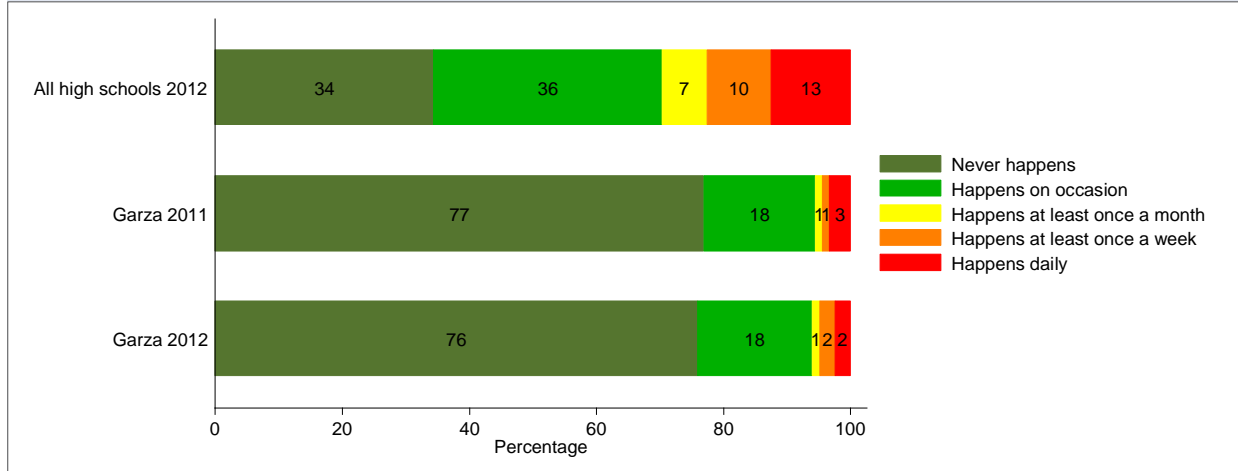


Q23: During this school year, have you brought any of the following items to school?

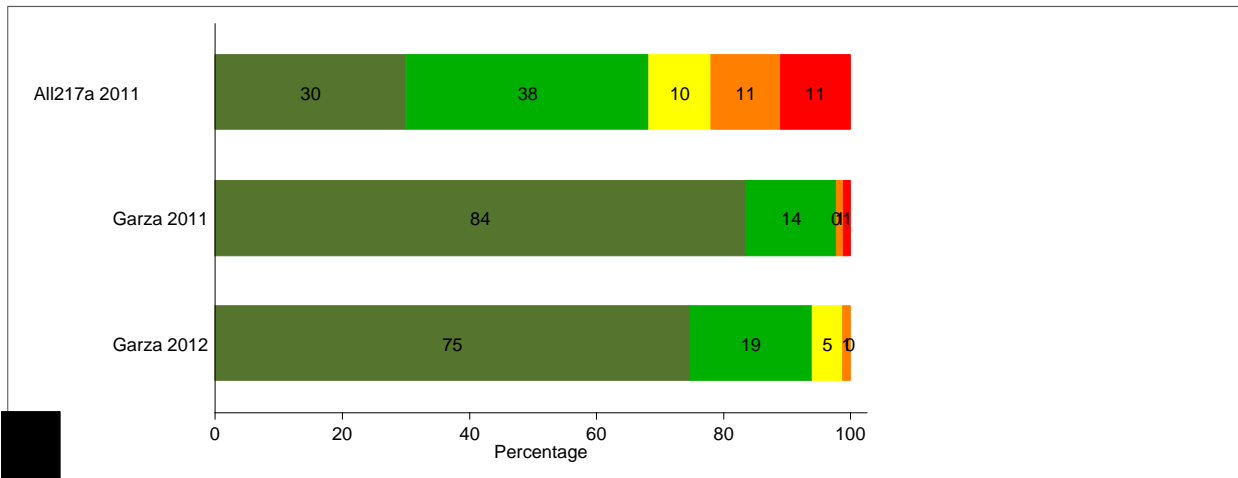


us?

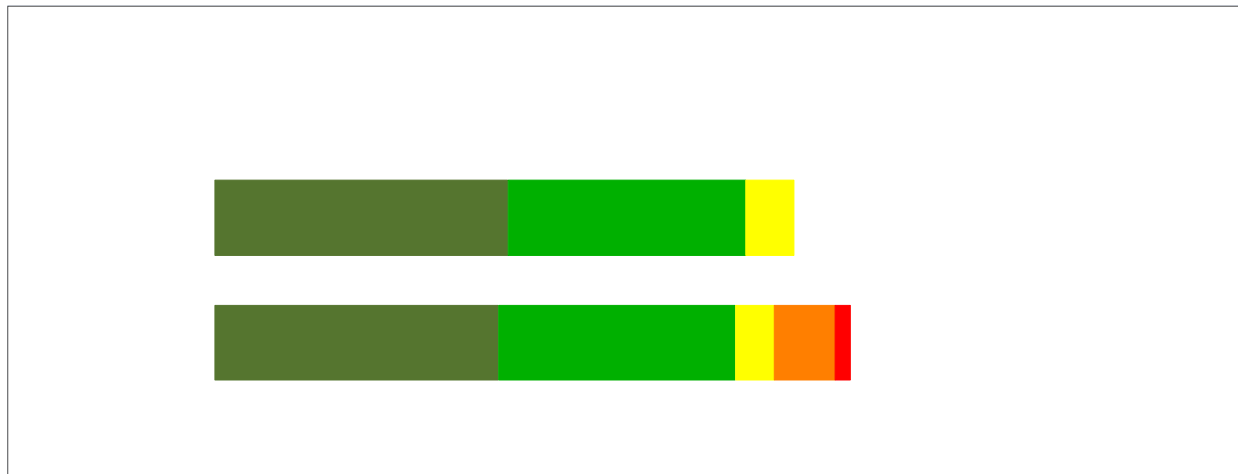
Q15a: How often does racial tension occur at your school?



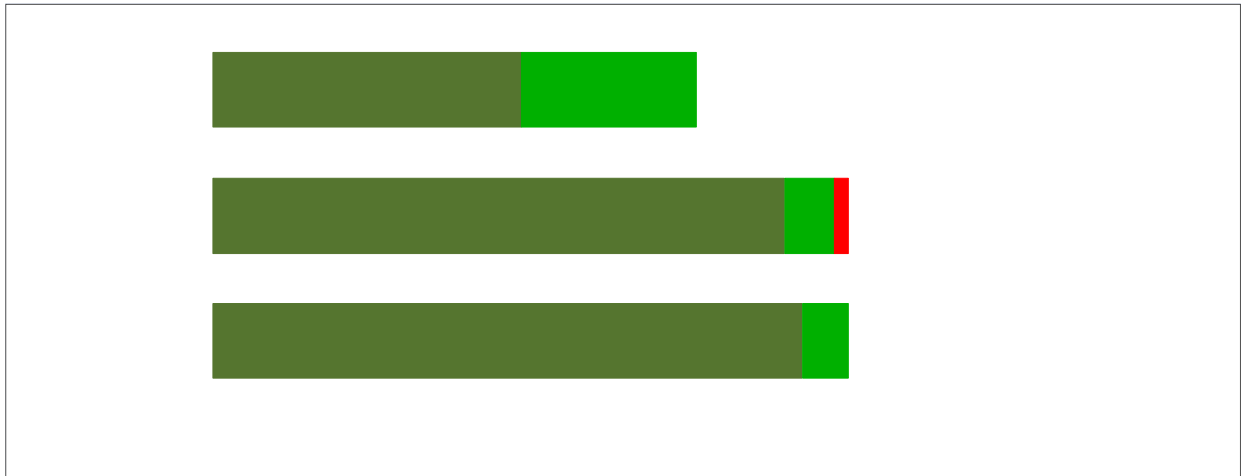
Q15b: How often does student bullying occur at your school?



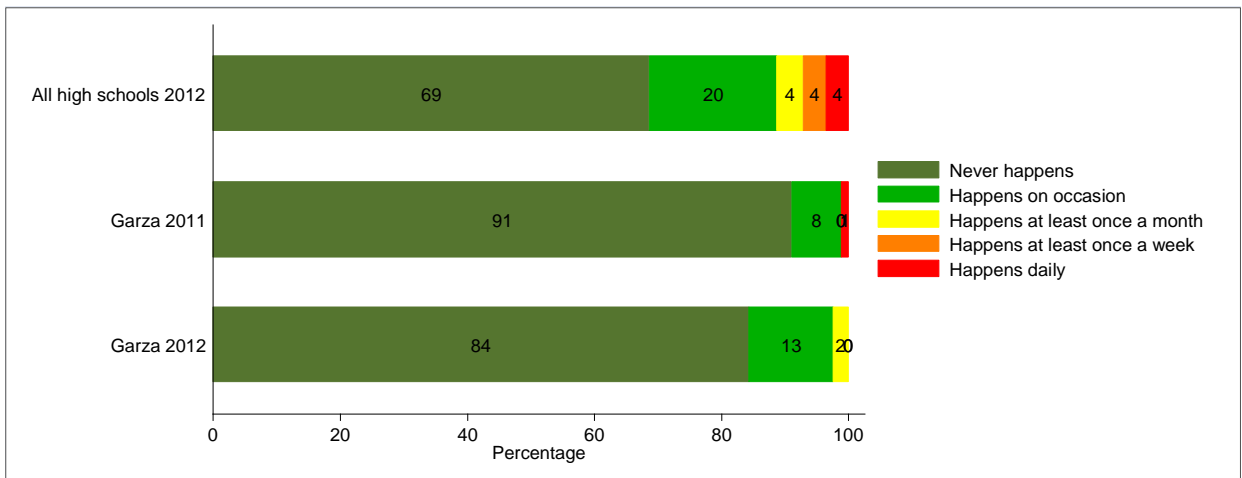
Q15c: How often do acts of disrespect for teachers occur at your school?



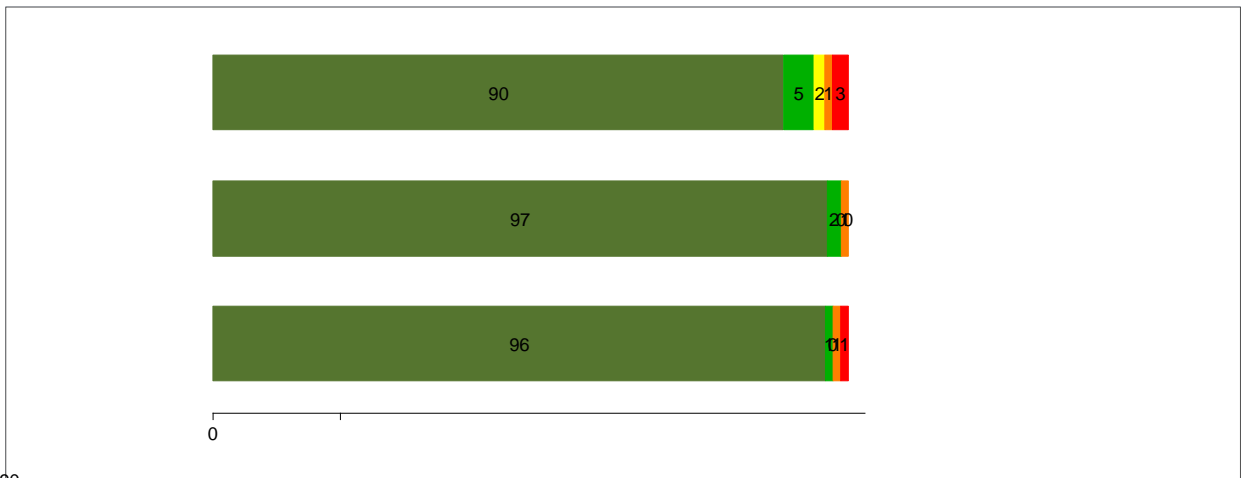
Q15d: How often do gang activities occur at your school?



Q15e: How often have you experienced any type of bullying at your school?

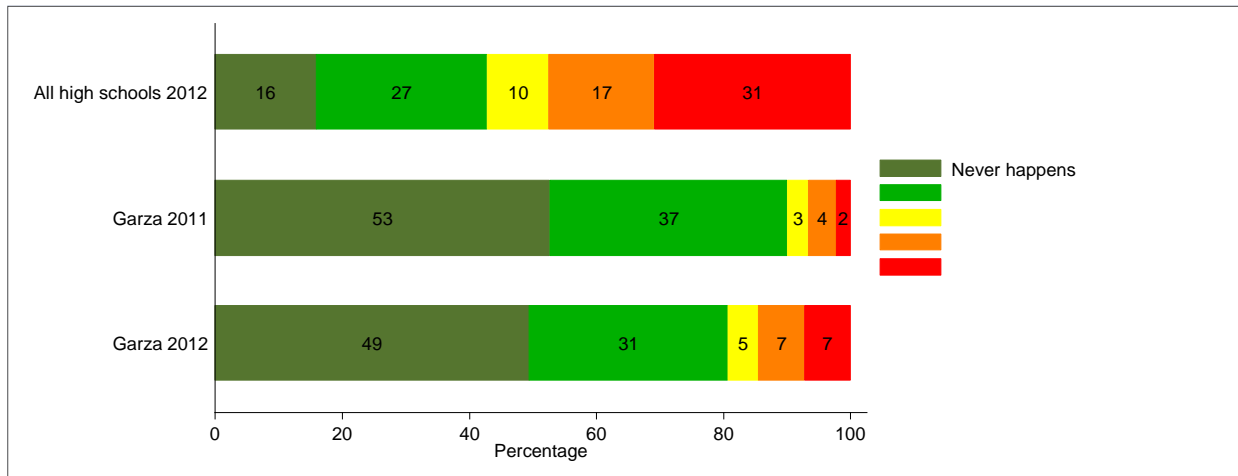


Q15f: How often were you absent because you did not feel safe on the way to/from school?

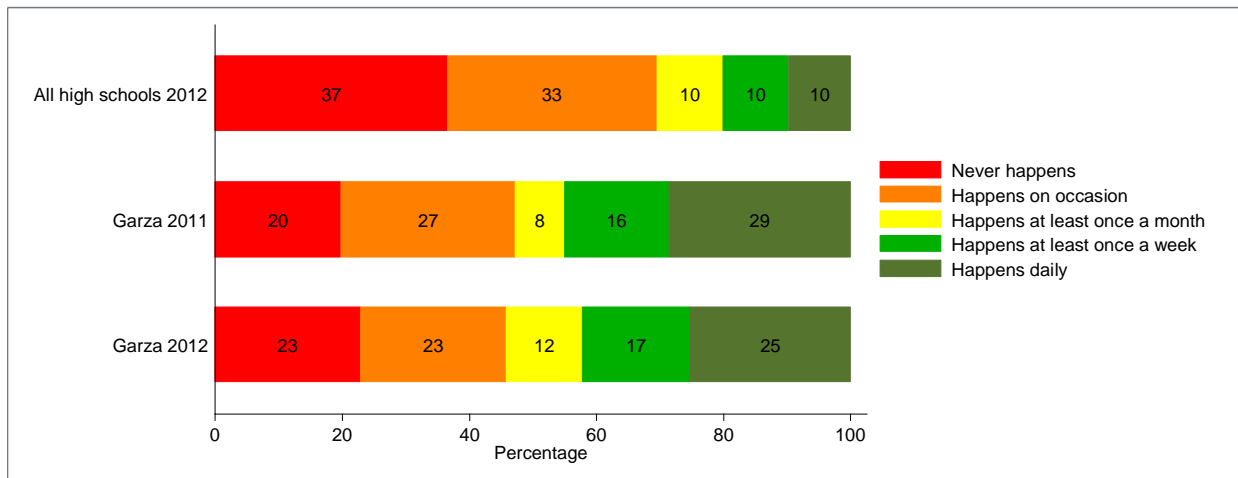


90

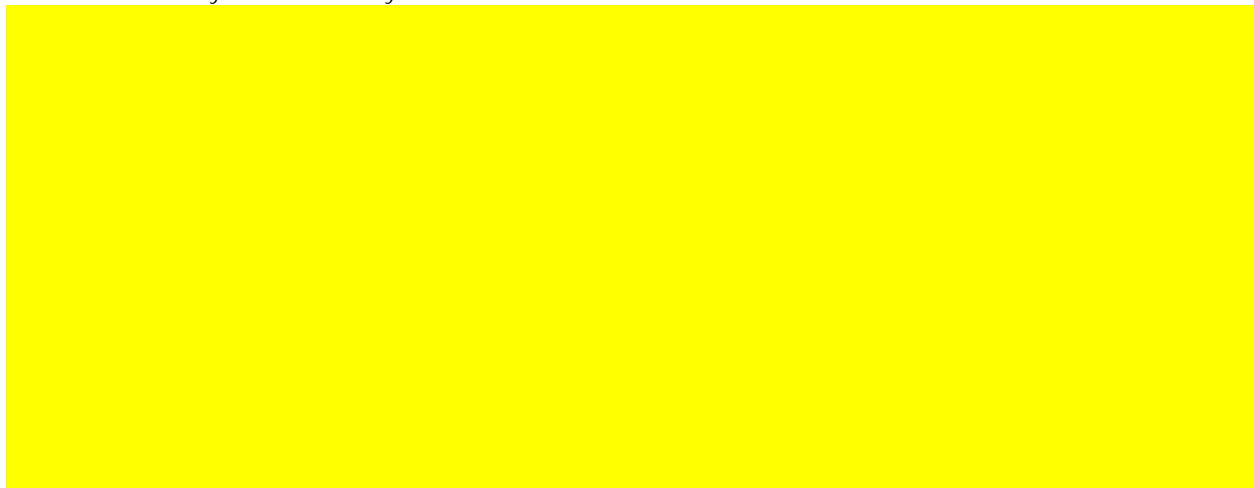
Q15g: How often does your teacher have to interrupt class to deal with student misbehavior?



Q15h: Do teachers or staff give you praise or rewards for good behavior?

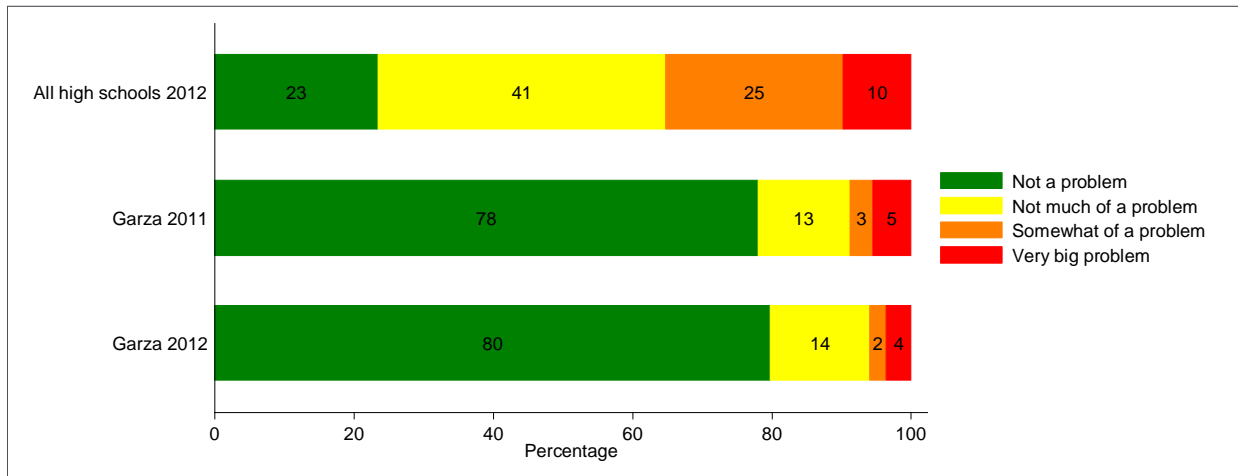


Q8: How safe do you feel when you are at school?

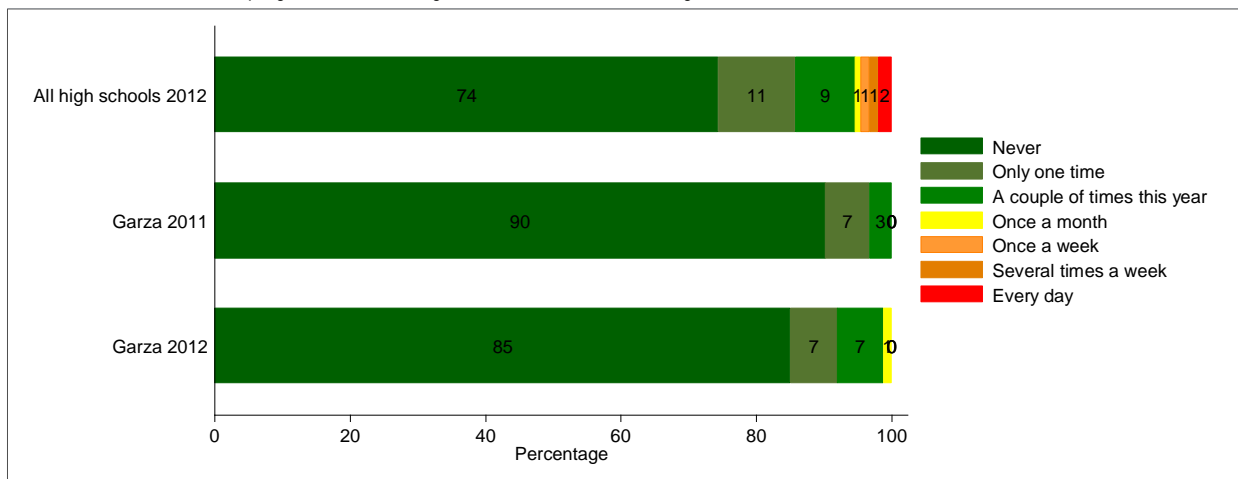


Q9: During the last month, did you miss one or more school days

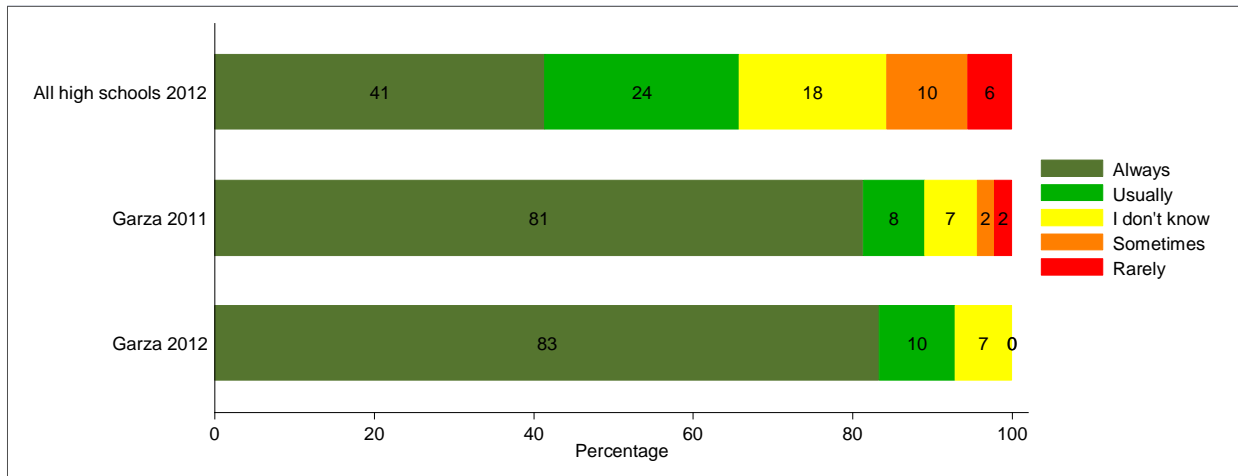
Q12: How big a problem do you think bullying is at your school?



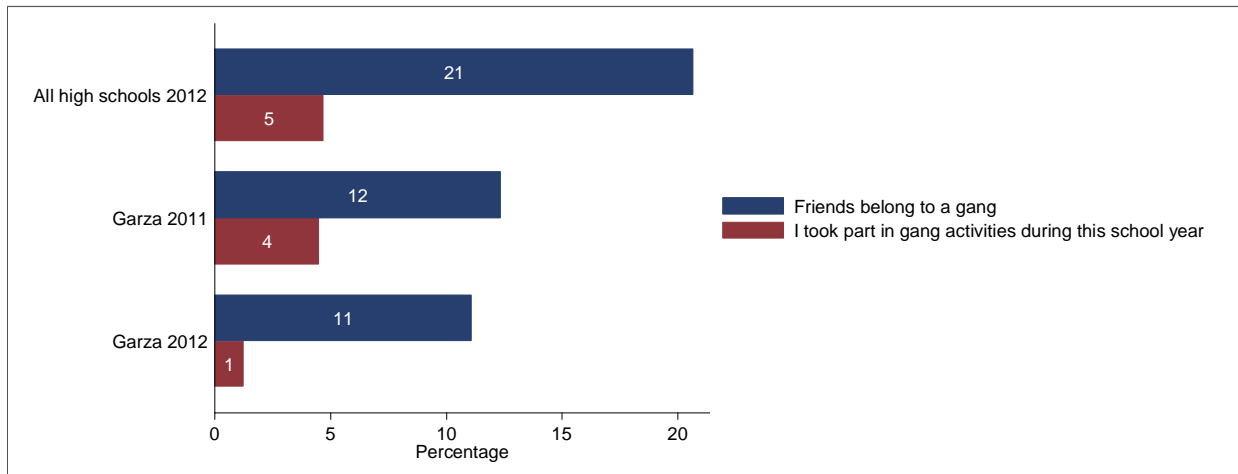
Q11: During this school year, how often have you or your close friends been physically harmed or threatened with physical harm by another student at your school?



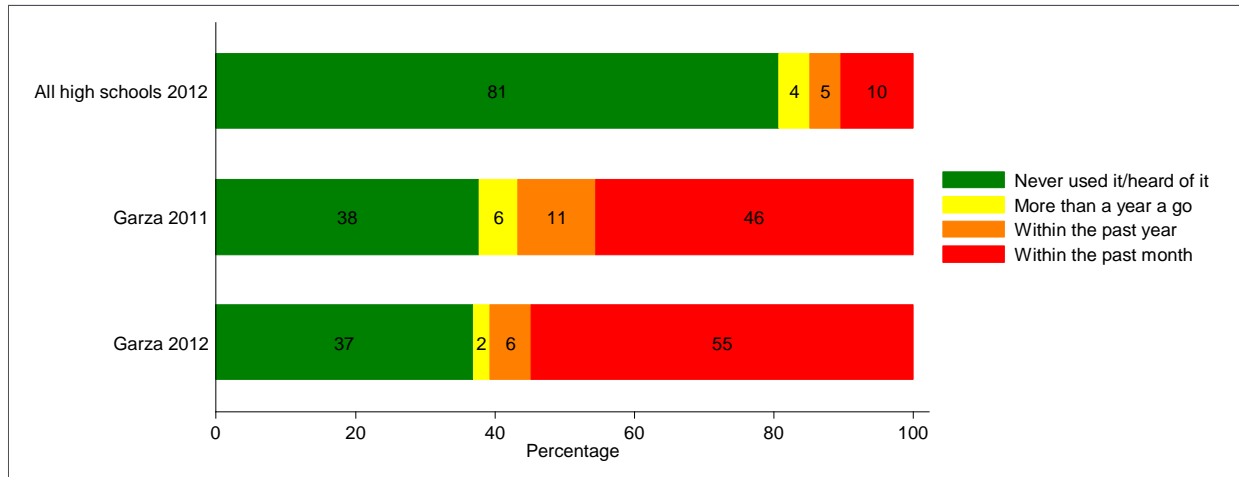
Q14: Are school rules about verbal or physical assaults or fighting enforced by school staff?



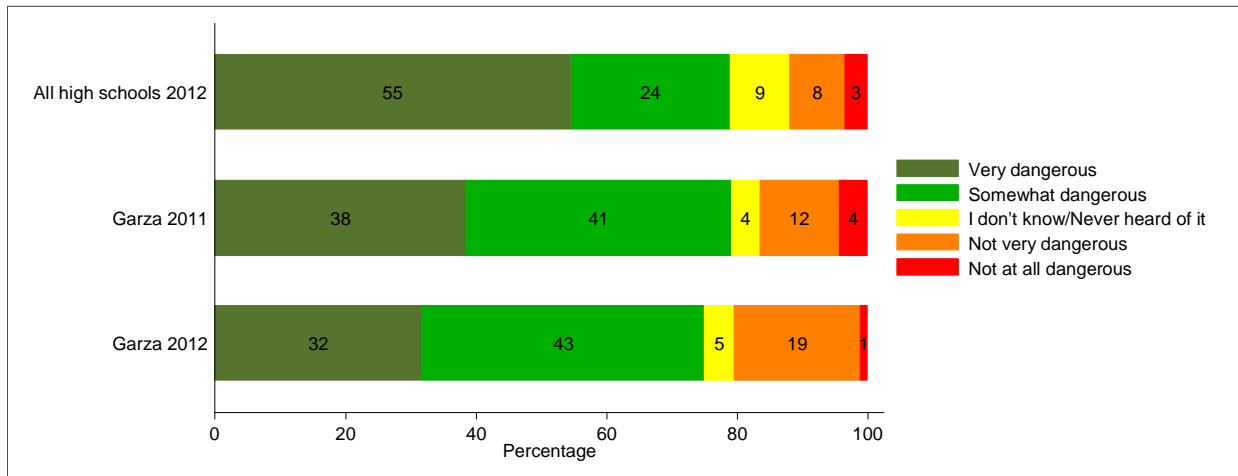
Q16-Q17: Do any of your friends belong to a gang? During this school year, did you take part in any gang activities?



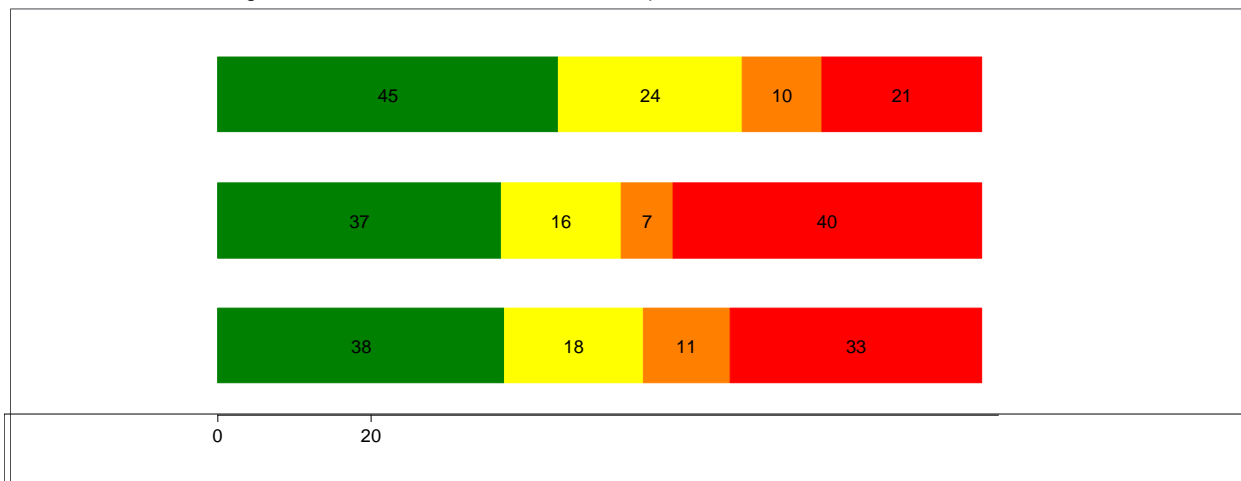
Q18a: What is the most recent you have used Tobacco?



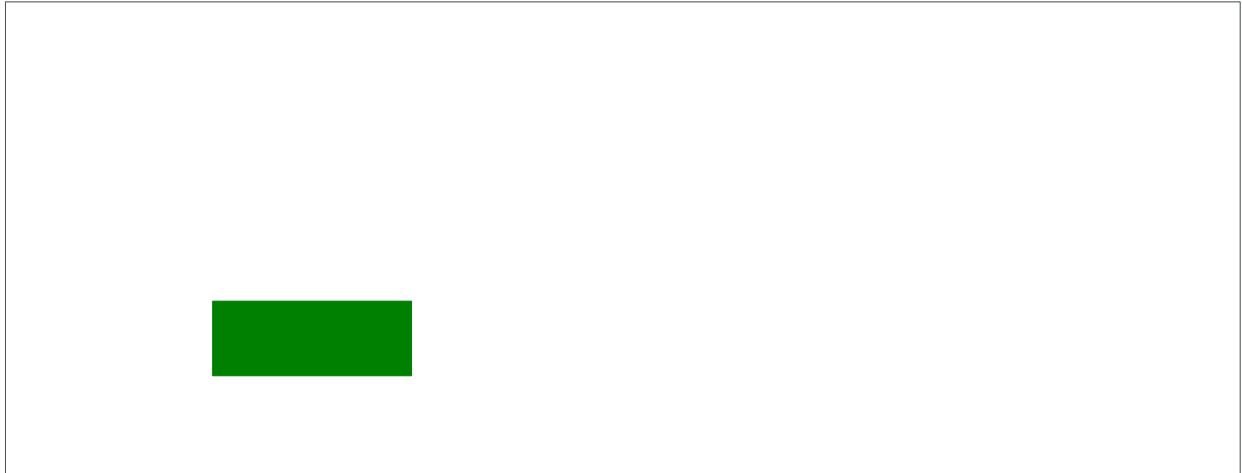
Q27a: How dangerous is it for kids your age to use Tobacco?



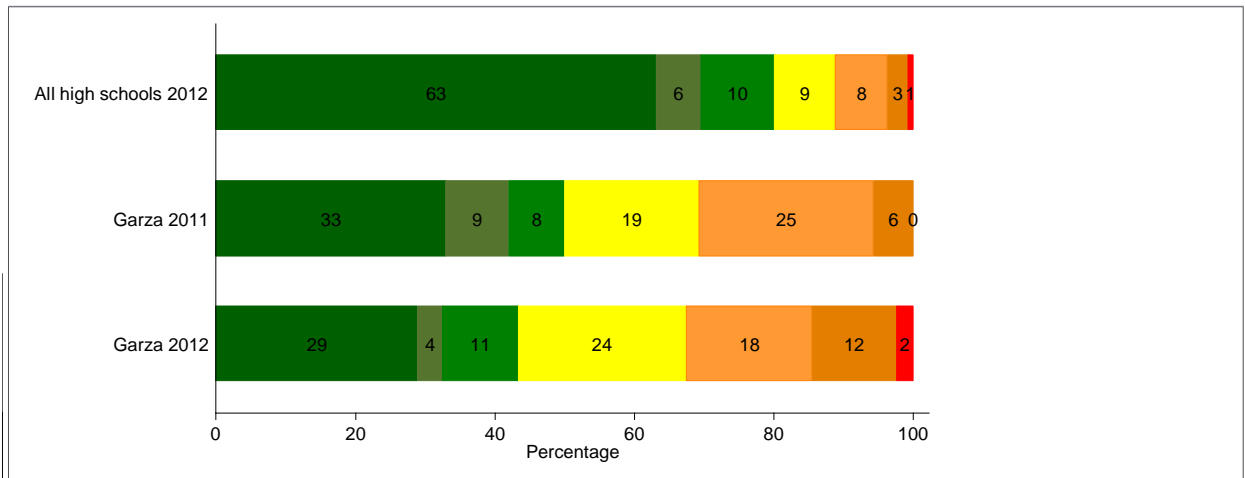
Q28g: During the school year, how many times have you experienced advertisements (TV, radio, billboard, magazine, internet, etc.) for tobacco products?



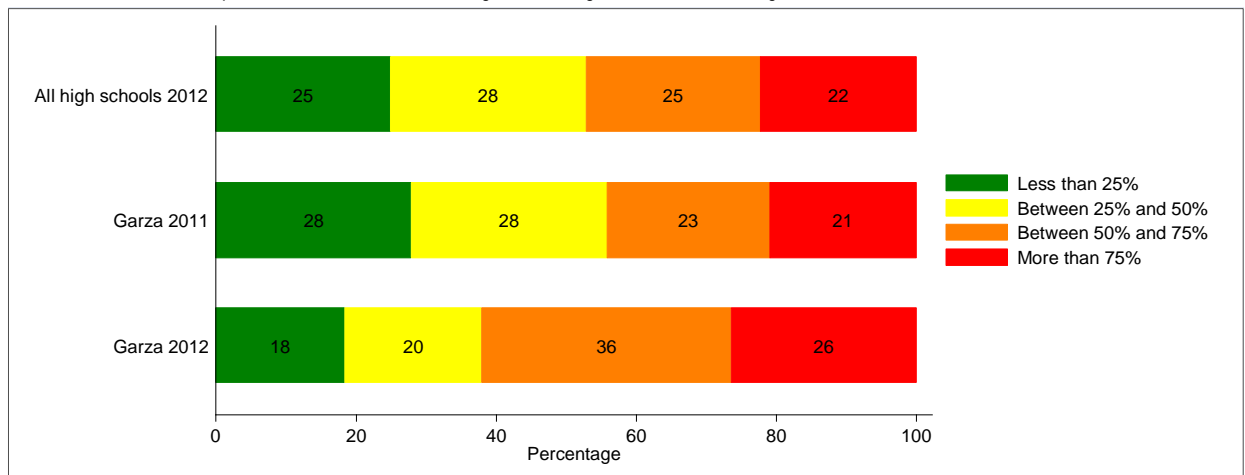
Q18b: What is the most recent you have used Alcohol?



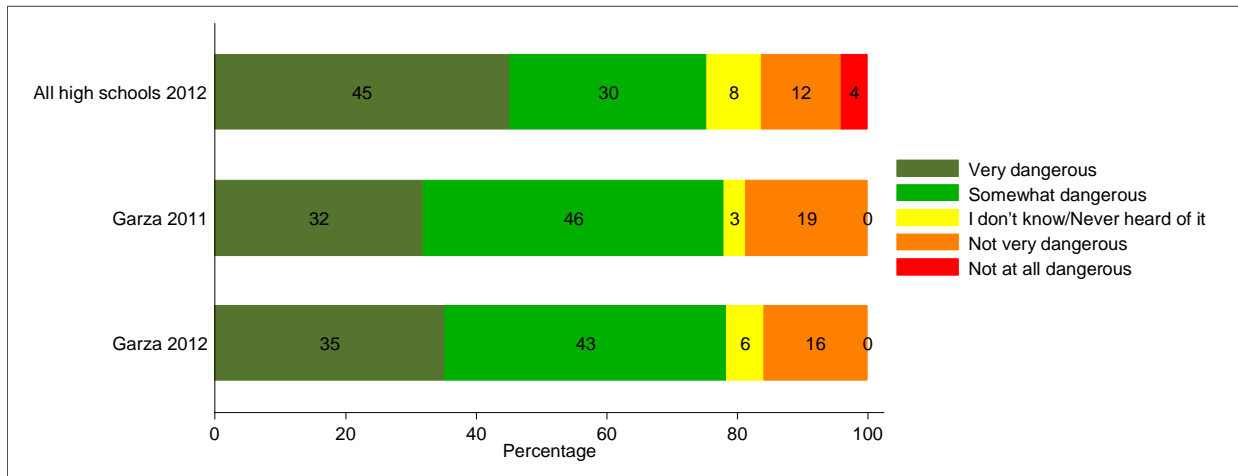
Q21b: During this year, how often did you use Alcohol?



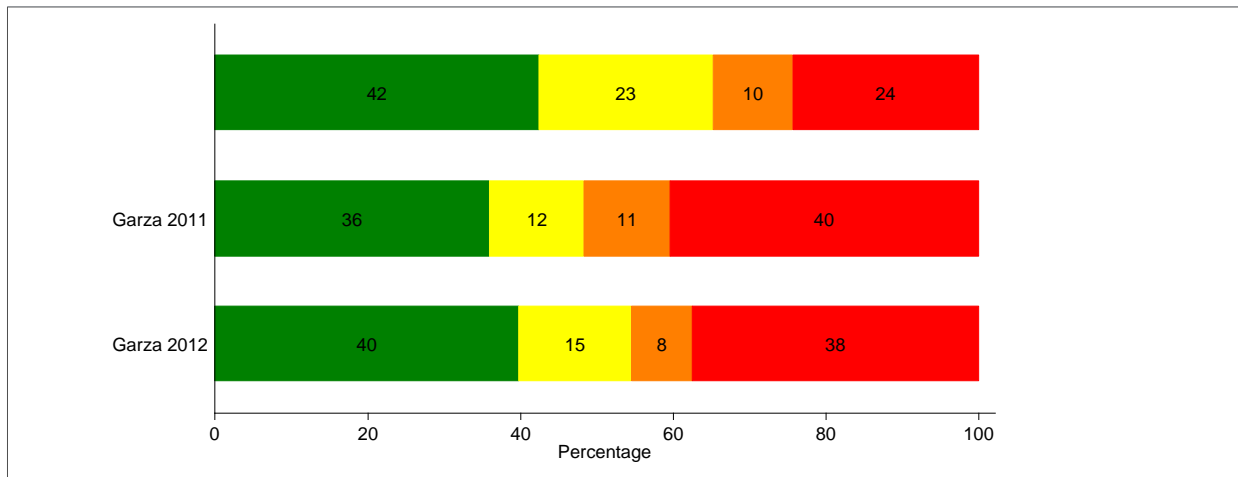
Q29b. Within the past month, how many kids at your school do you think have used Alcohol?



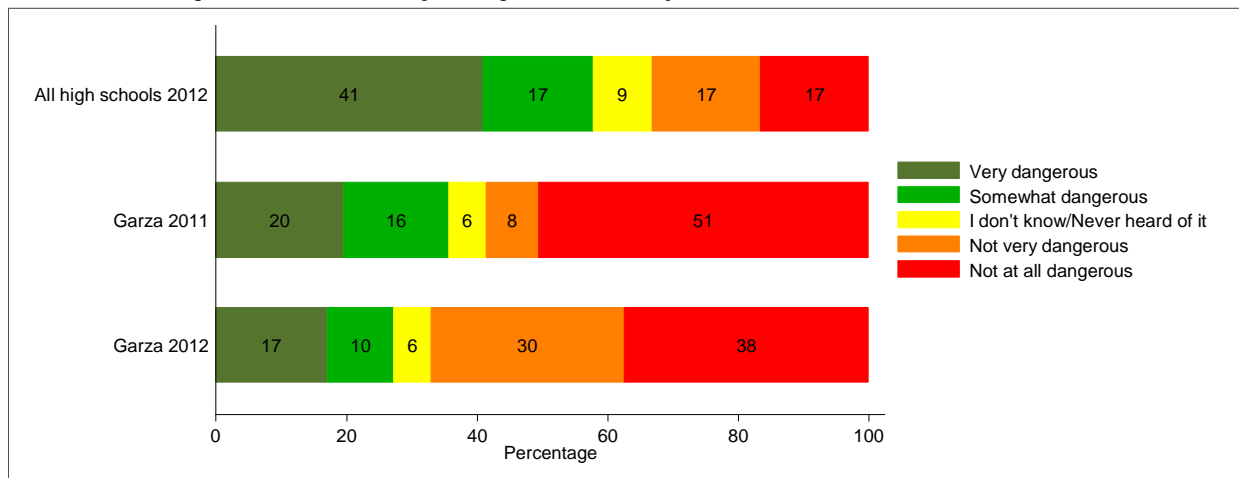
Q27b: How dangerous is it for kids your age to use Alcohol?



Q28f. During the school year, how many times have you experienced advertisements (TV, radio, billboard, magazine, internet, etc.) for alcohol products?



Q27c: How dangerous is it for kids your age to use Marijuana?

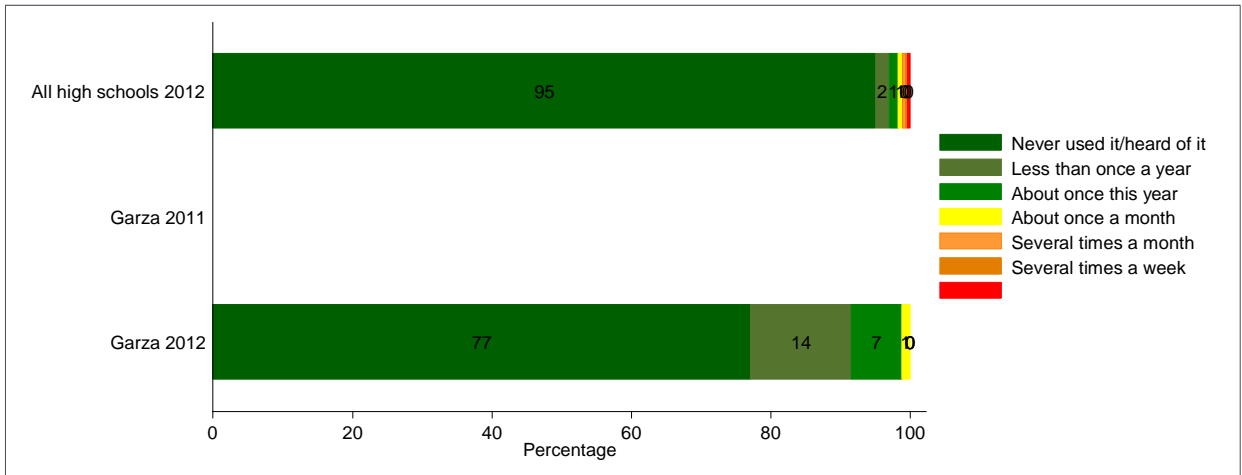


Q18d: What is the most recent you have used K2 or Spice?



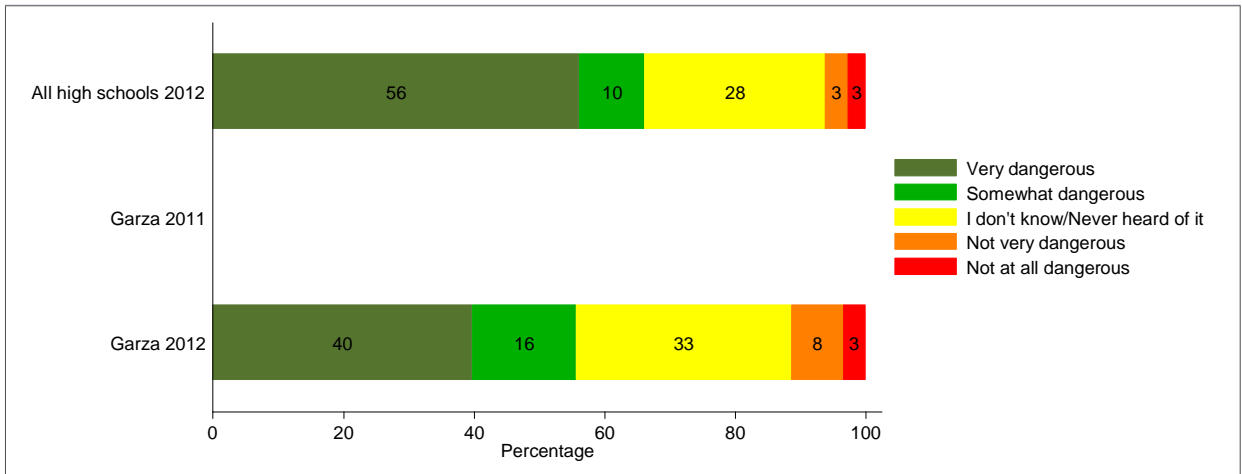
Note: This question was not asked in the 2010-2011 survey.

Q21d: During this year, how often did you use K2 or Spice?



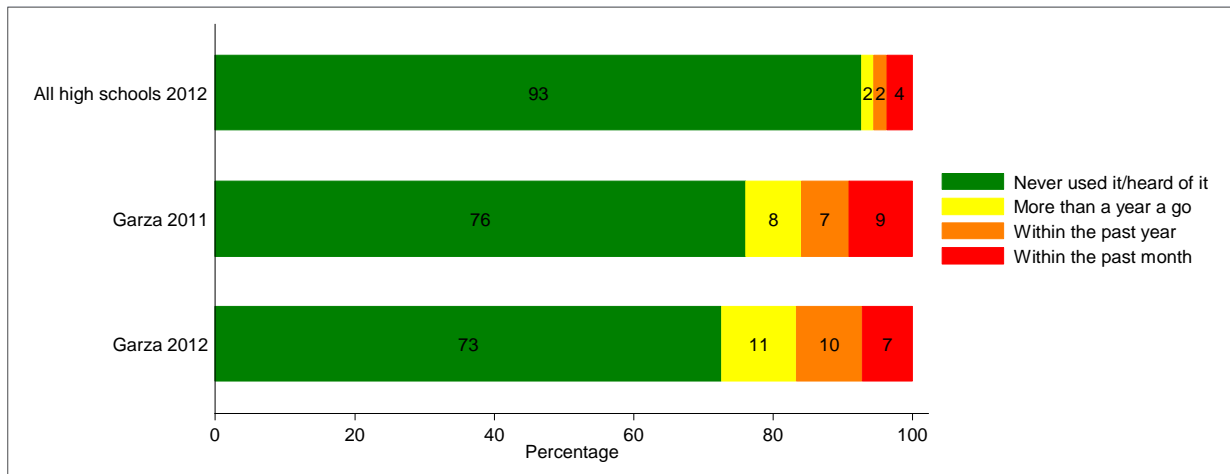
Note: This question was not asked in the 2010-2011 survey.

Q27d: How dangerous is it for kids your age to use K2 or Spice?

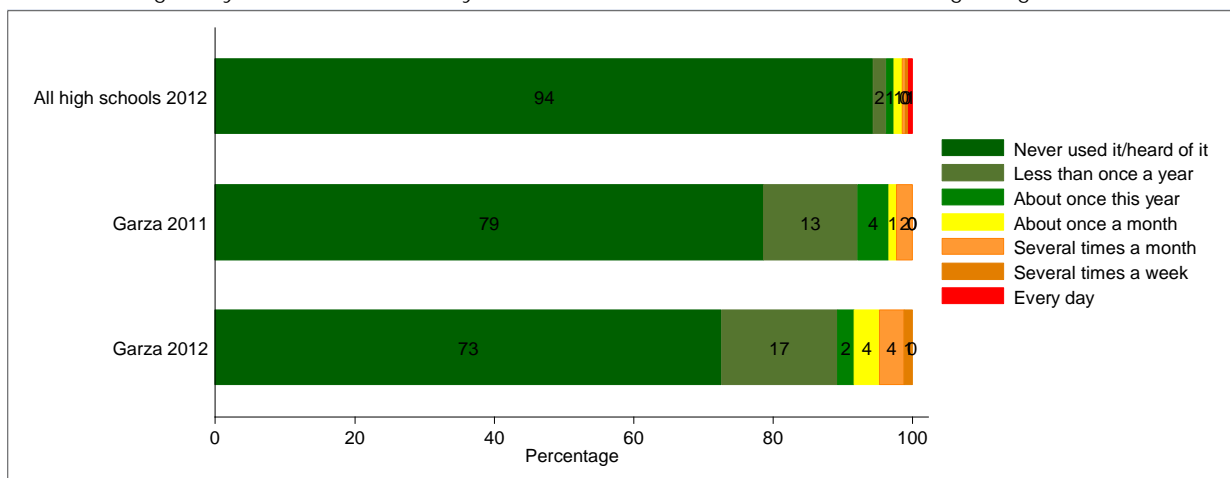


Note: This question was not asked in the 2010-2011 survey.

Q18f: What is the most recent you have used Over the Counter Medication to get high?



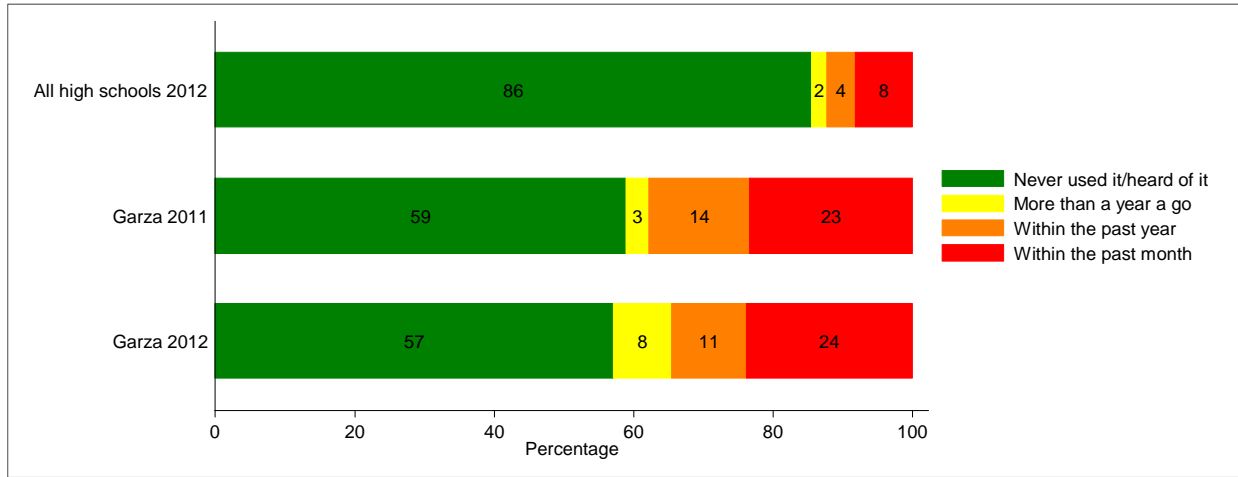
Q21f: During this year, how often did you use Over the Counter Medication to get high?



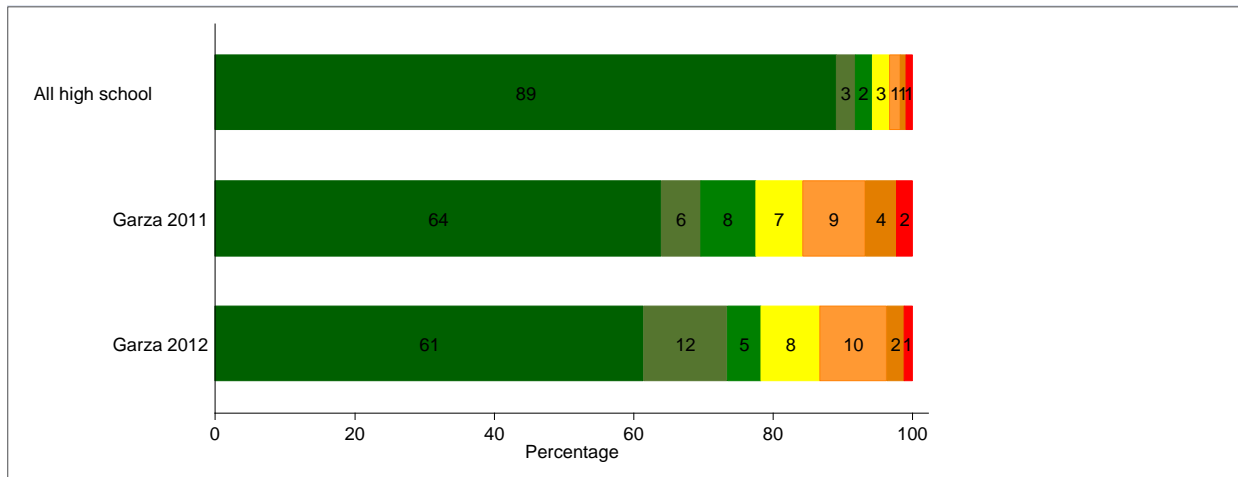
Q27f: How dangerous is it for kids your age to use Over the Counter Medication to get high?



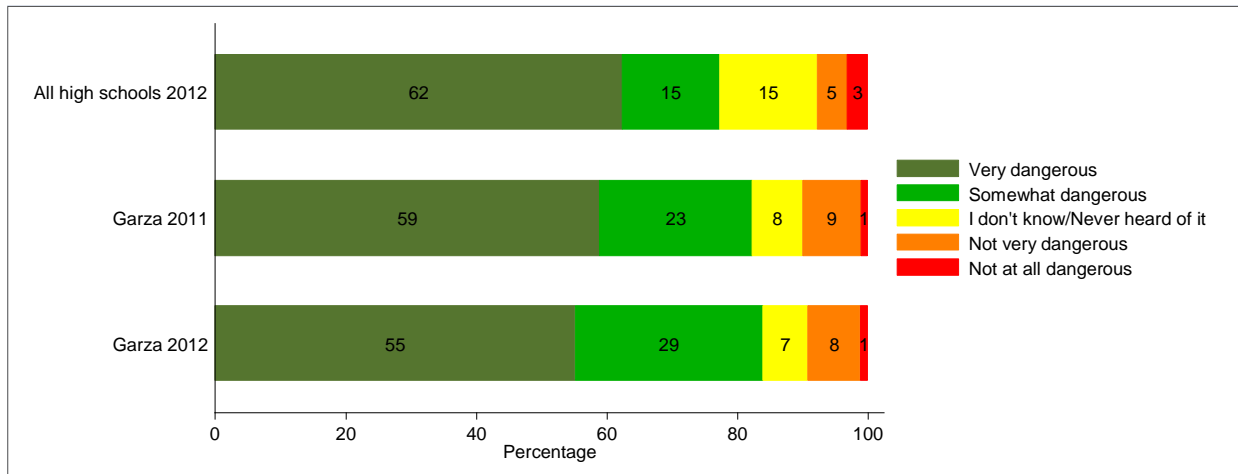
Q18g: What is the most recent you have used Prescription Drugs that were not prescribed to you to get high?



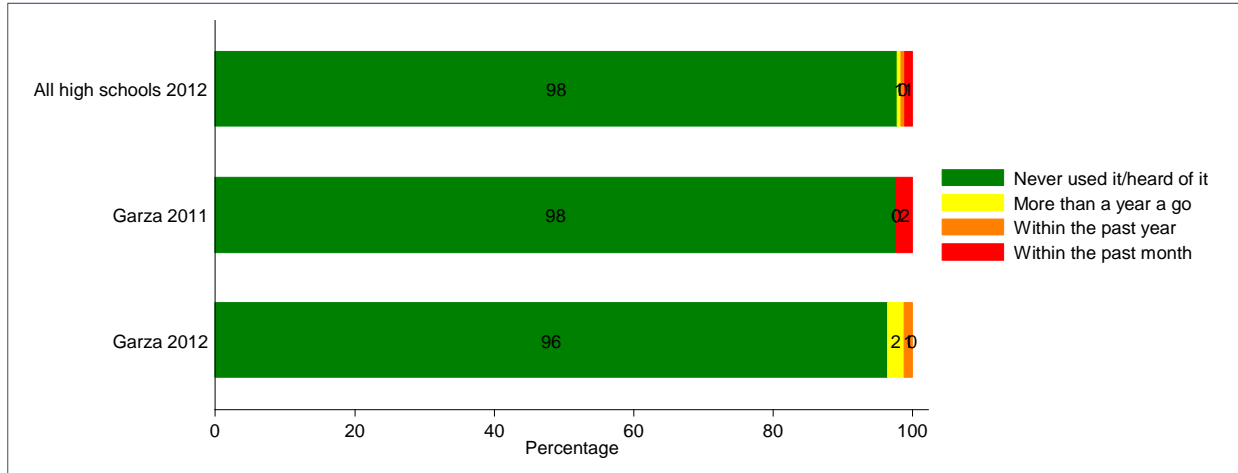
Q21g: During this year, how often did you use Prescription Drugs that were not prescribed to you to get high?



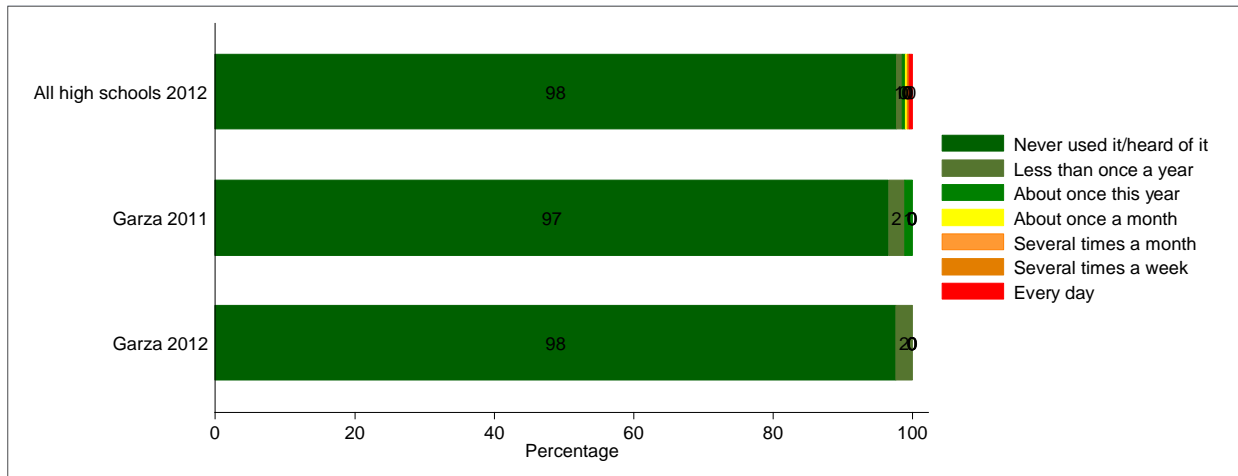
Q27g: How dangerous is it for kids your age to use Prescription Drugs that are not prescribed to you to get high?



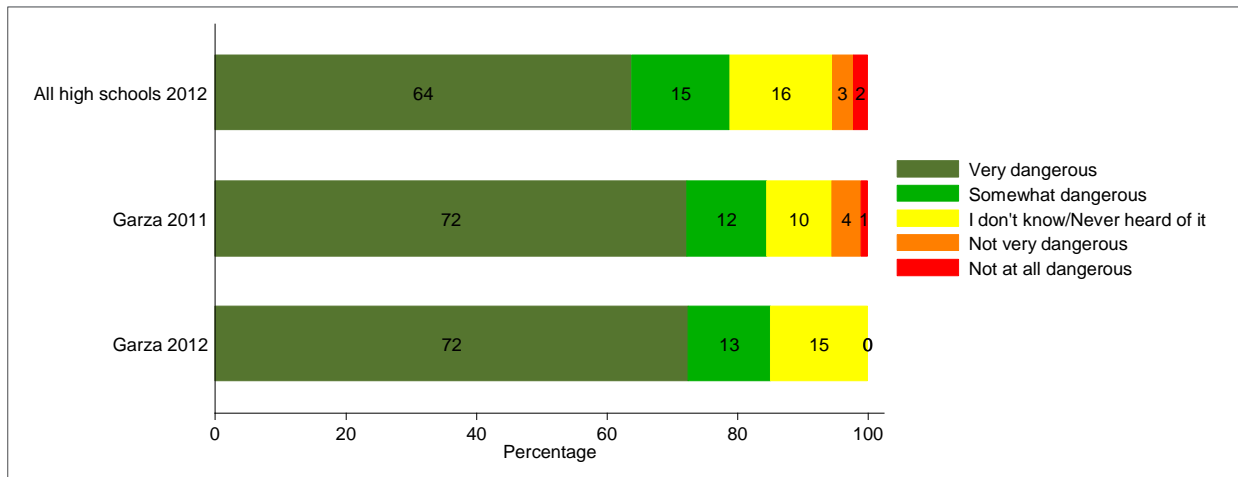
Q18h: What is the most recent you have used Steroids or Performance Enhancing Drugs?



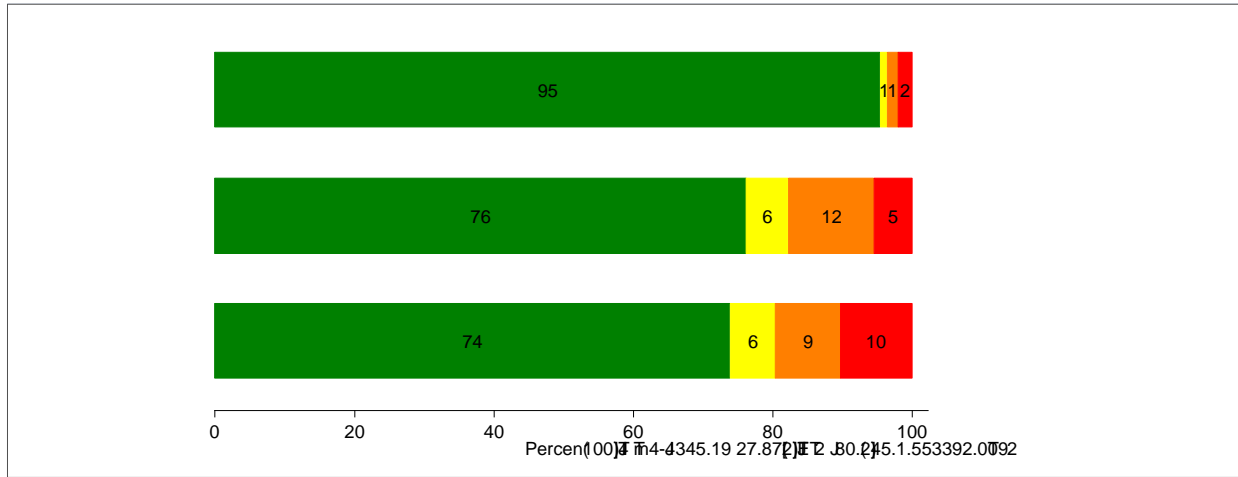
Q21h: During this year, how often did you use Steroids or Performance Enhancing Drugs?



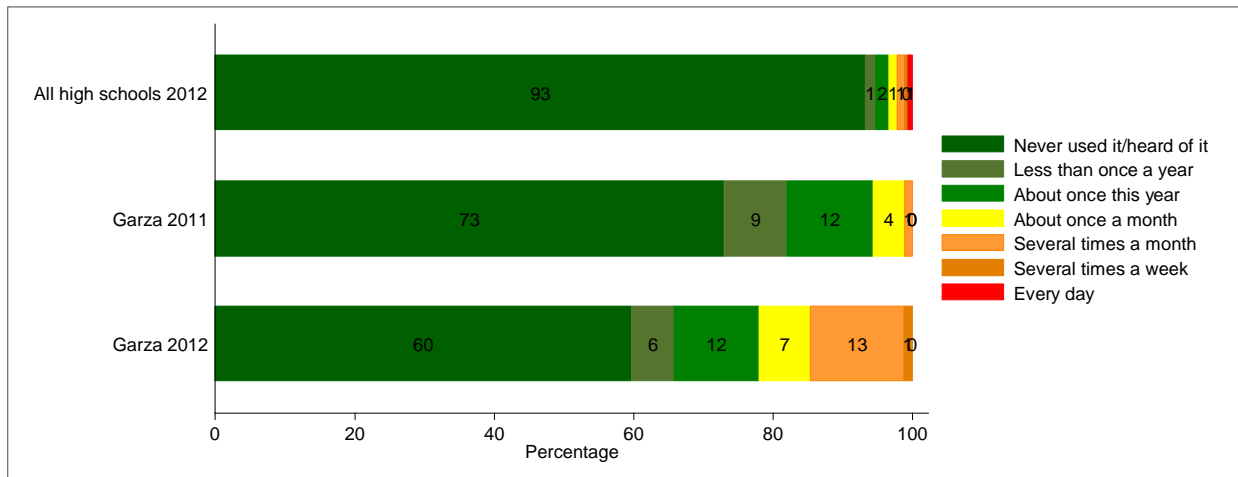
Q27h: How dangerous is it for kids your age to use Steroids or Performance Enhancing Drugs?



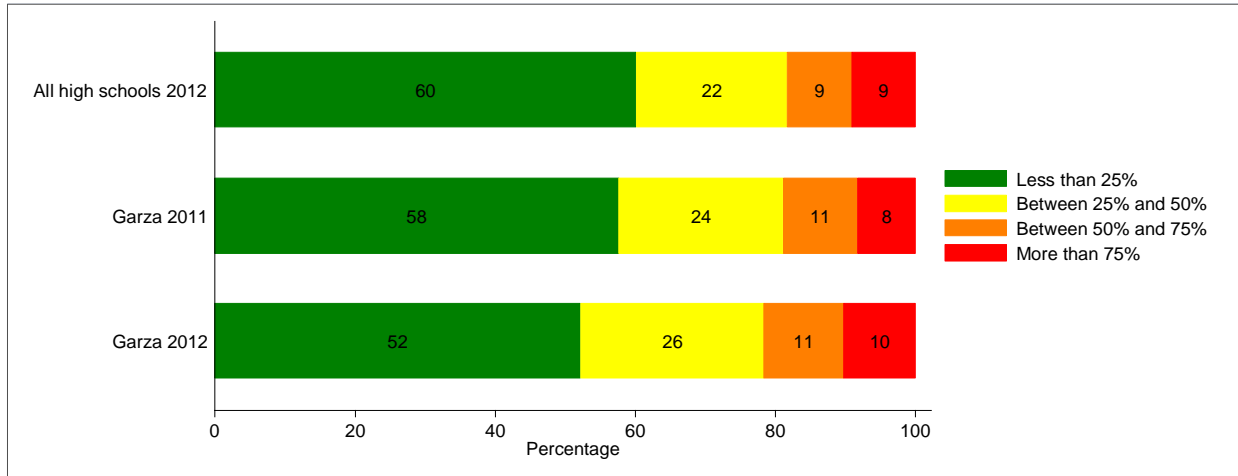
Q18i: What is the most recent you have used Other Illegal Drugs (e.g. cocaine, ecstasy, hallucinogens, heroin, methamphetamines)?



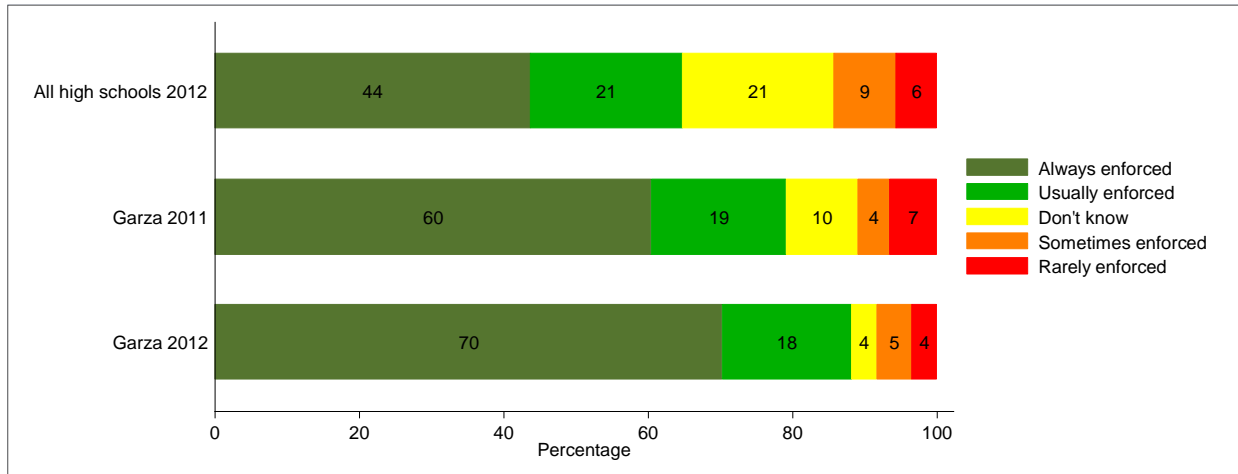
Q21i: During this school year how often have you used Other Illegal Drugs?



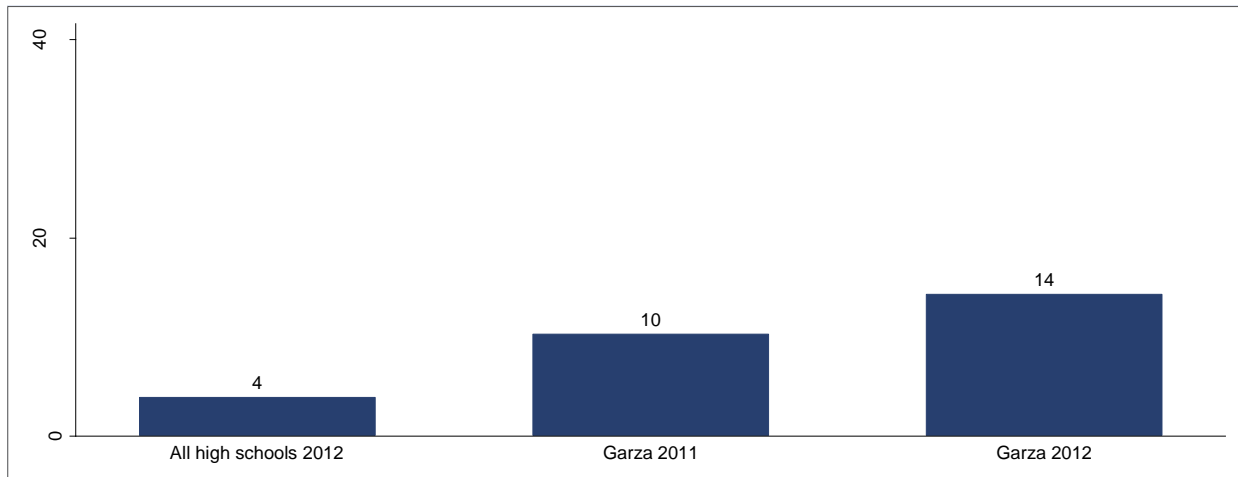
Q29d. Within the past month, how many kids at your school do you think have used Other Illegal Drugs (e.g., cocaine, ecstasy, heroin, etc.) ?



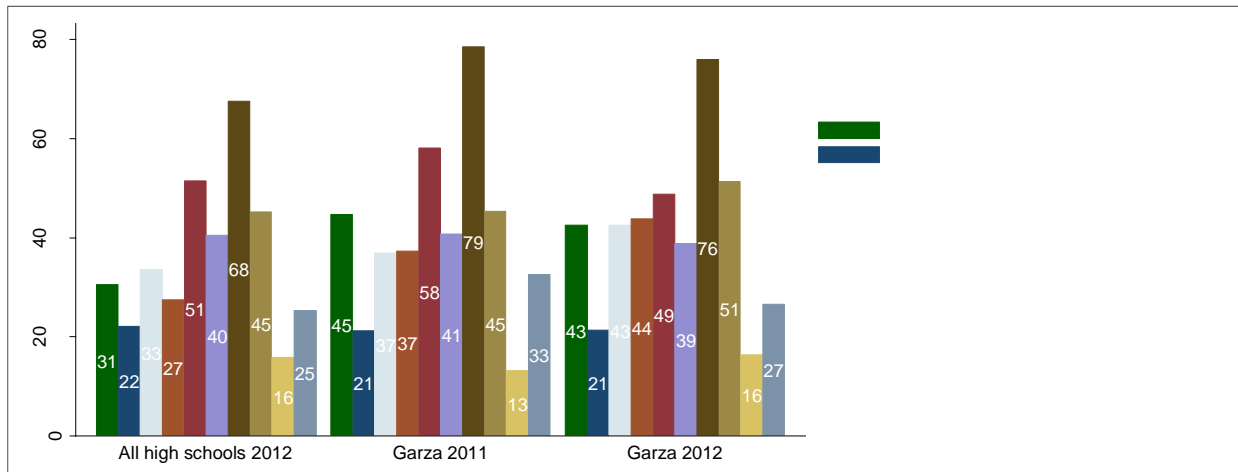
Q13: Are school rules about drug, alcohol, and tobacco use enforced by school staff?



Q19: During this school year, have you gotten into trouble with the police because of tobacco, drugs, or alcohol?

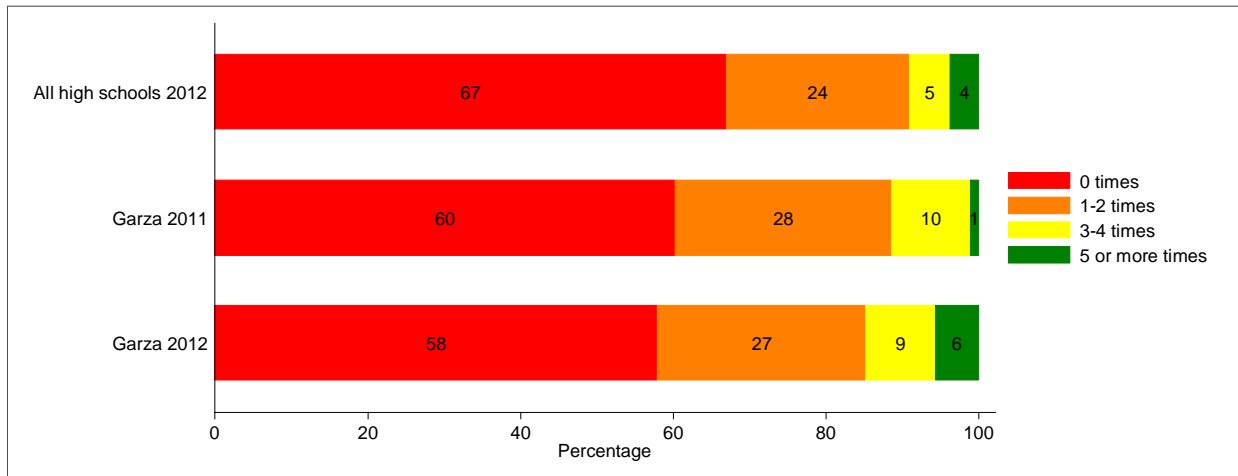


Q24: If you had a drug or alcohol problem and needed help, who would you go to?



Q28b. During the school year, how many times have you experienced presentations by people who recovered from alcohol and drug abuse?

Q28e. During the school year, how many times have you experienced printed materials with cartoons and stories about how students avoid substance abuse?



Q30. How good is your ability to cope with stress and negative emotions?

