



## 2006-2007 AISD Parent Survey Results

### Garza High School

The following report contains the results of the 2006-2007 AISD Parent Survey for your campus and all AISD schools at your level. The first section of this report provides a comparison of the campus demographics and the demographics reported by parents who responded to the survey from your campus. The next section describes the percentages of parents selecting specific responses for each survey item, and the final section indicates the actual number of parents who selected each response option. Campus survey results should be examined for areas of strength and opportunities

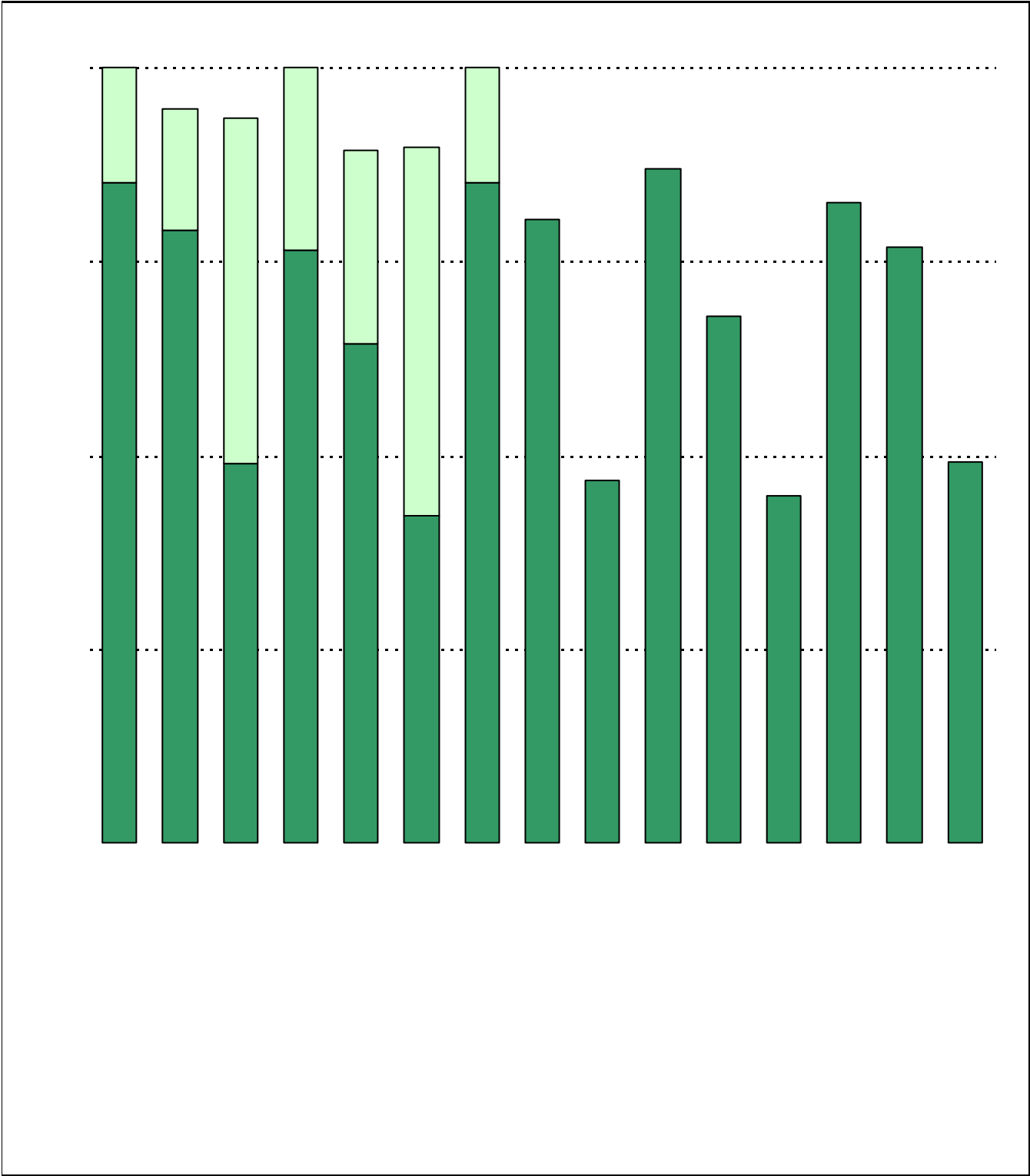
**How many parents responded to the survey in 2005-2006 and 2006-2007, and how does this compare to the number of students in the population each year?**

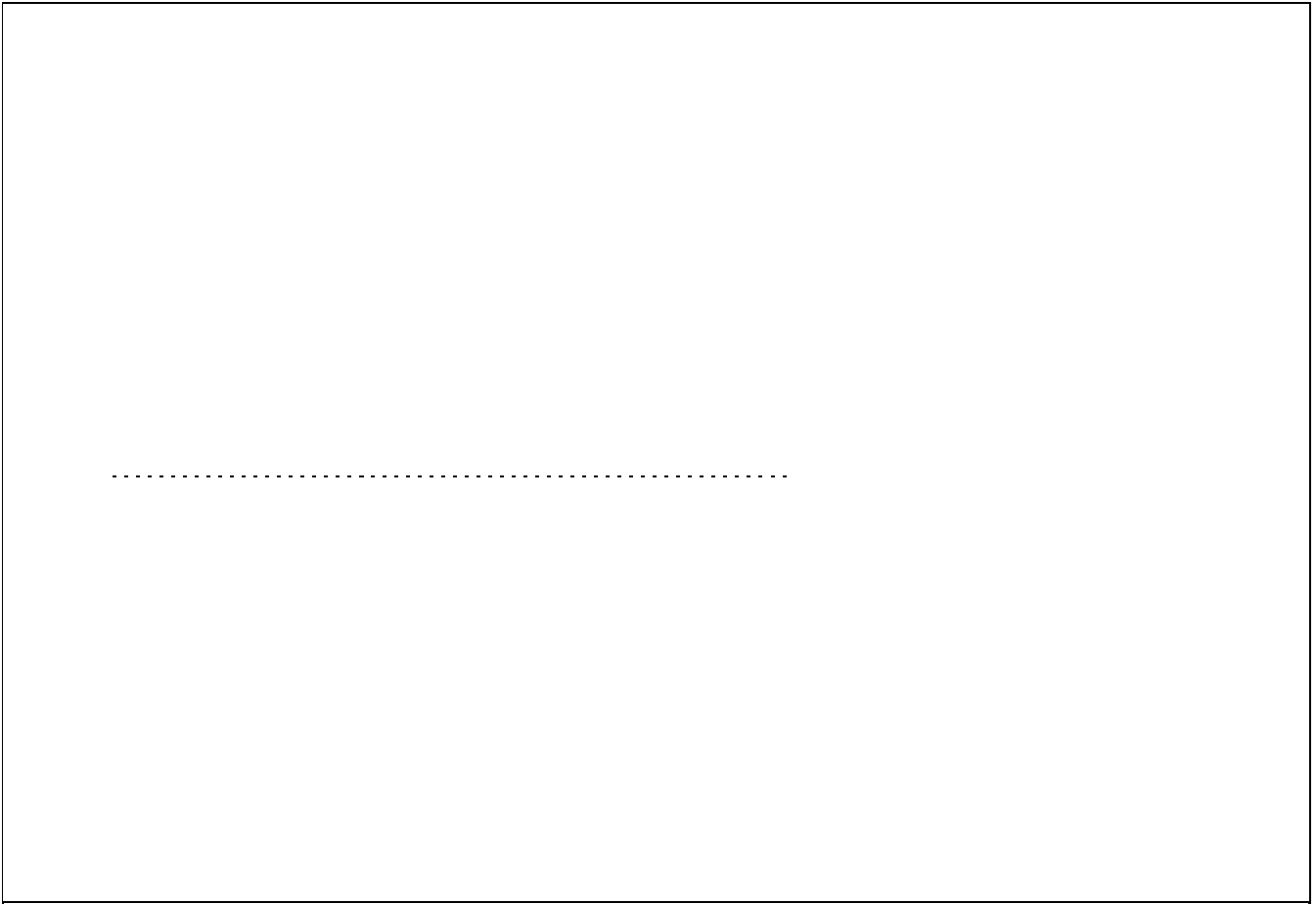
	Campus	District EL	District MS	District HS
	55			
	304			
	<i>18.1%</i>			
	66			
	309			
	<i>21.4%</i>			

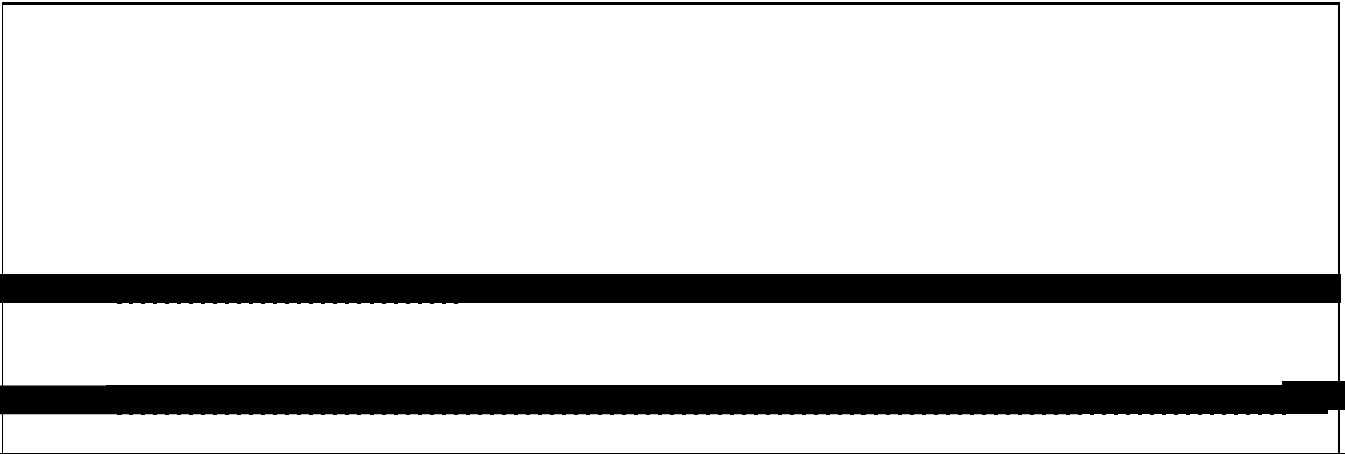
**What did parents report as their child's ethnicity, and how does this compare to the ethnic distribution of the student population?**

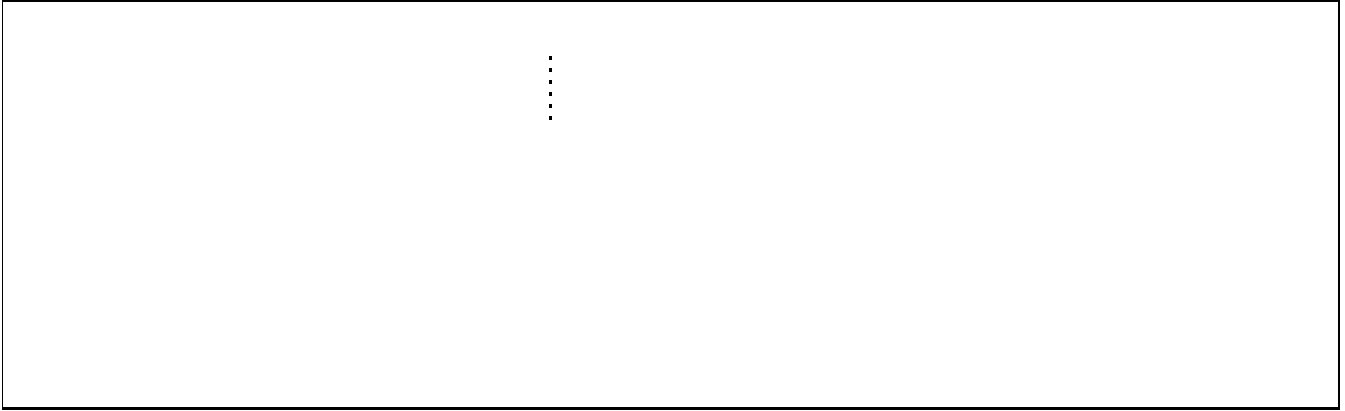
Ethnicity	% of Students, as Reported by Campus Parent Respondents	% of Students in Campus Population
	13.1%	
	1.6%	
	24.6%	
Native American	1.6%	0.6%
White	59.0%	51.8%

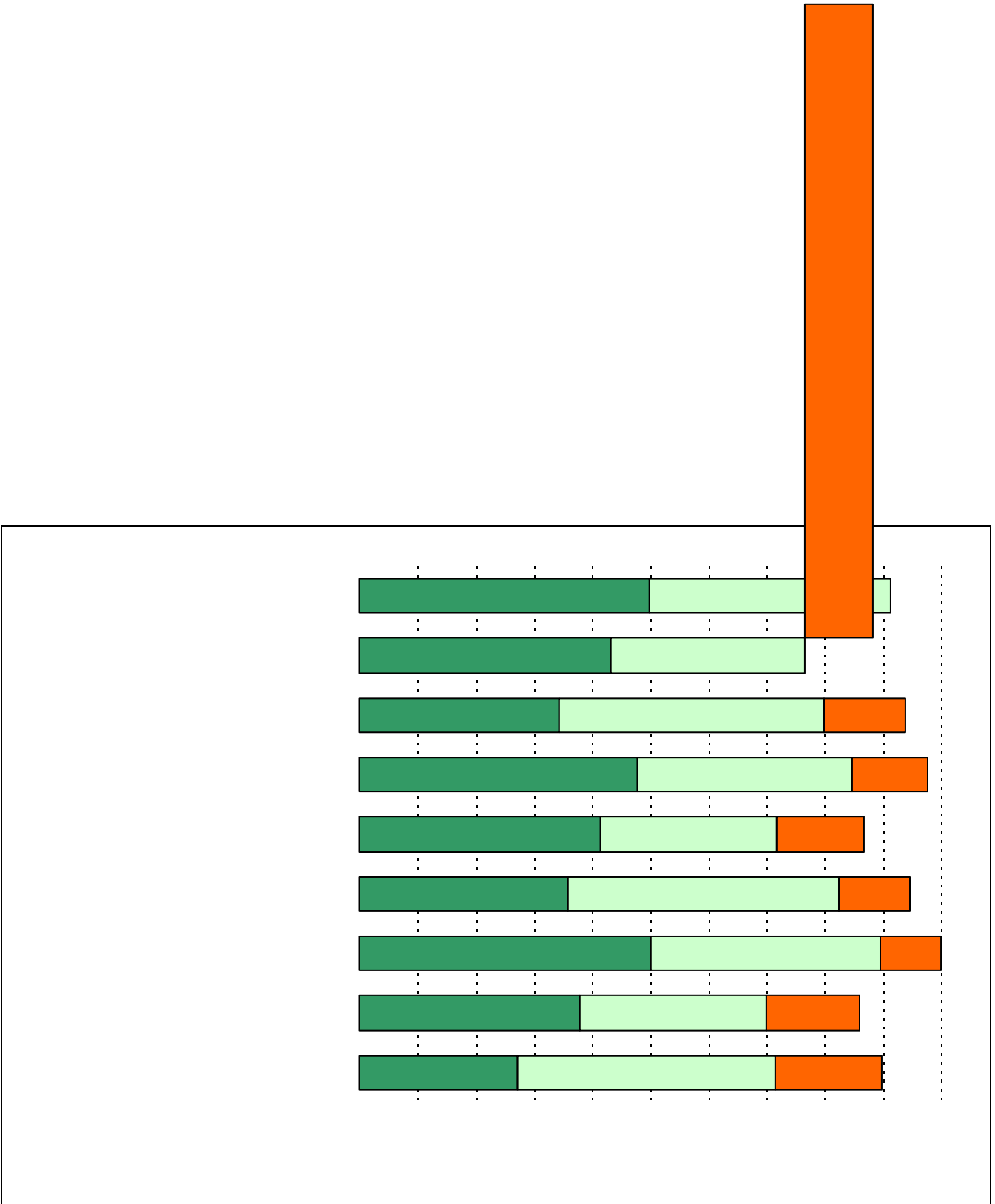
**U**





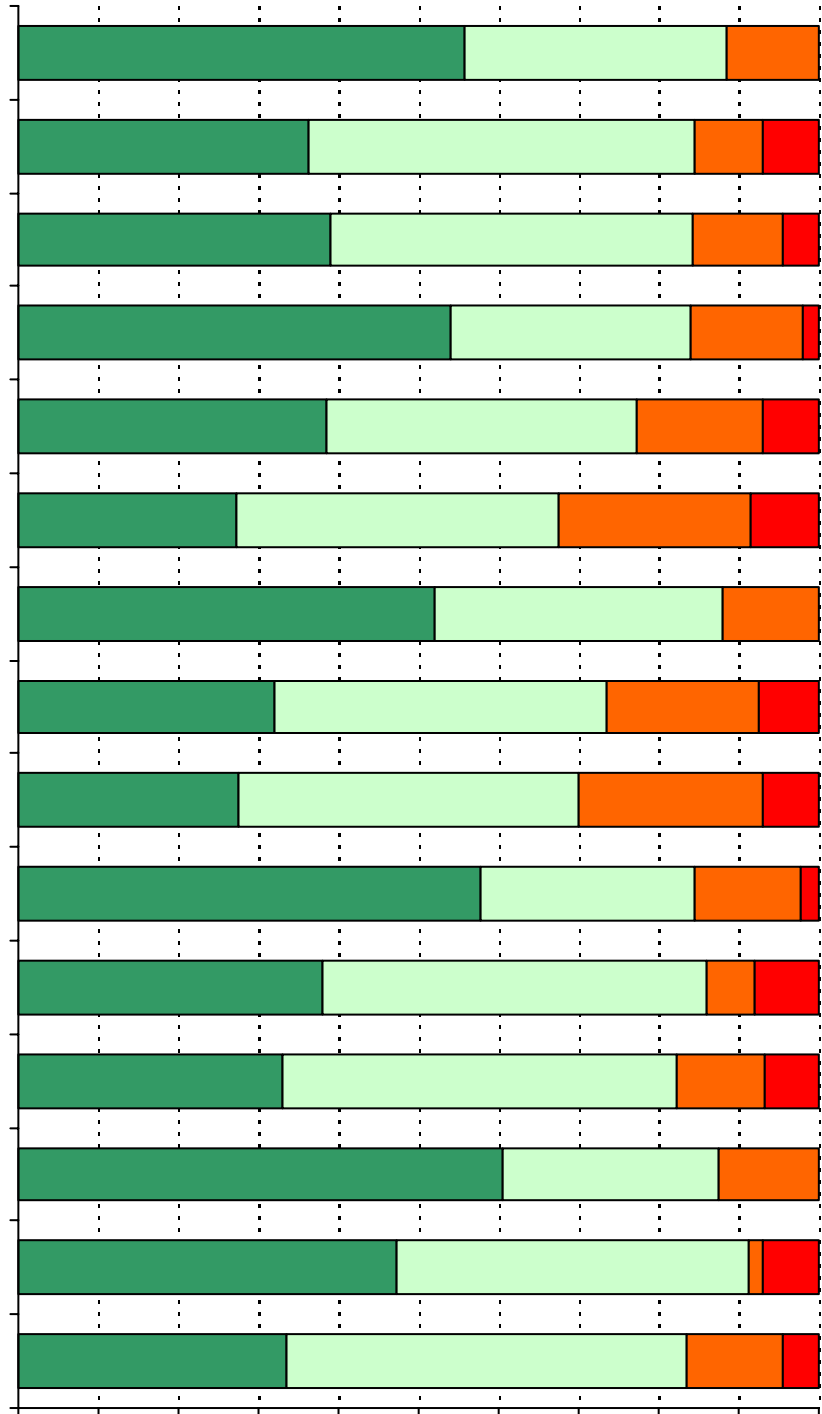




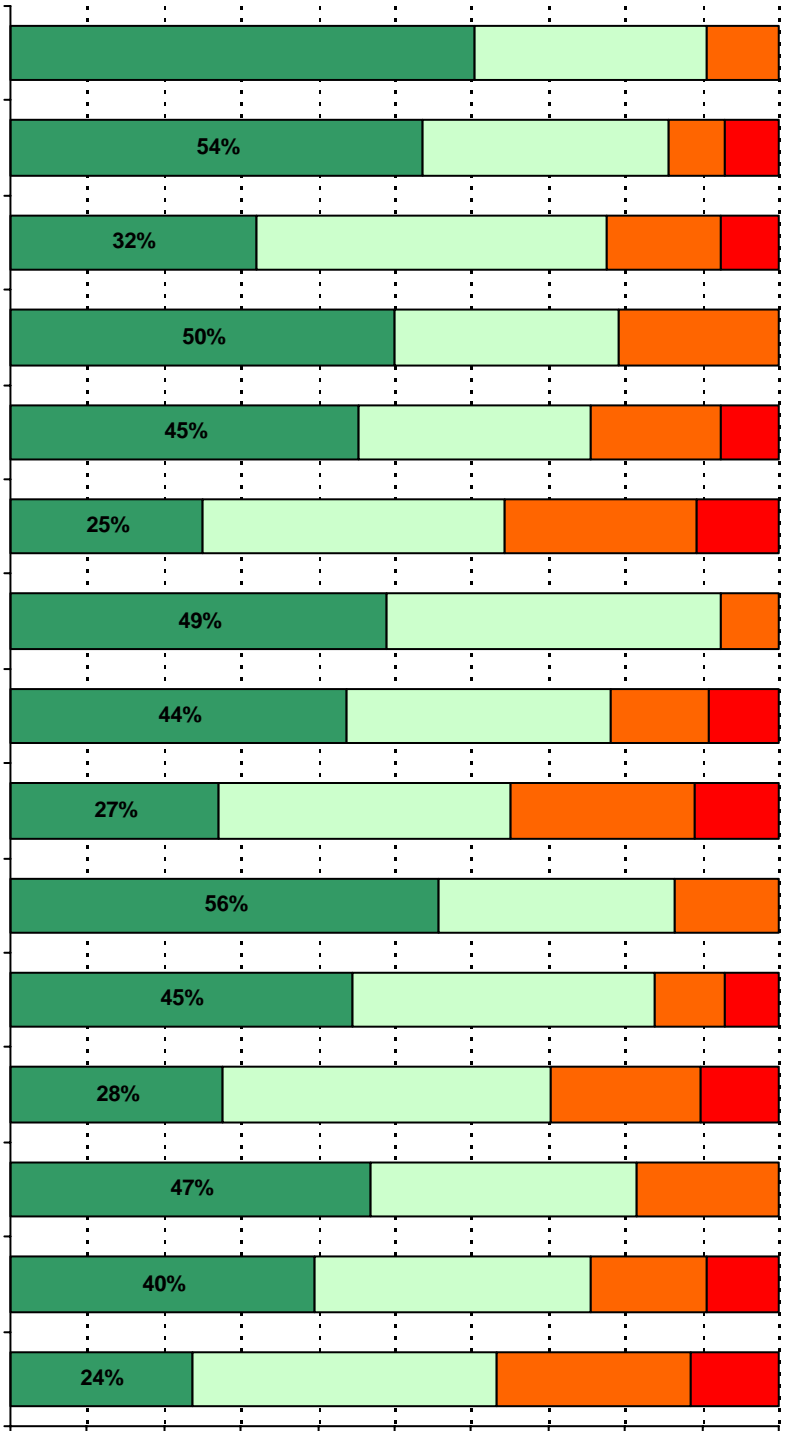


3996%

4036%

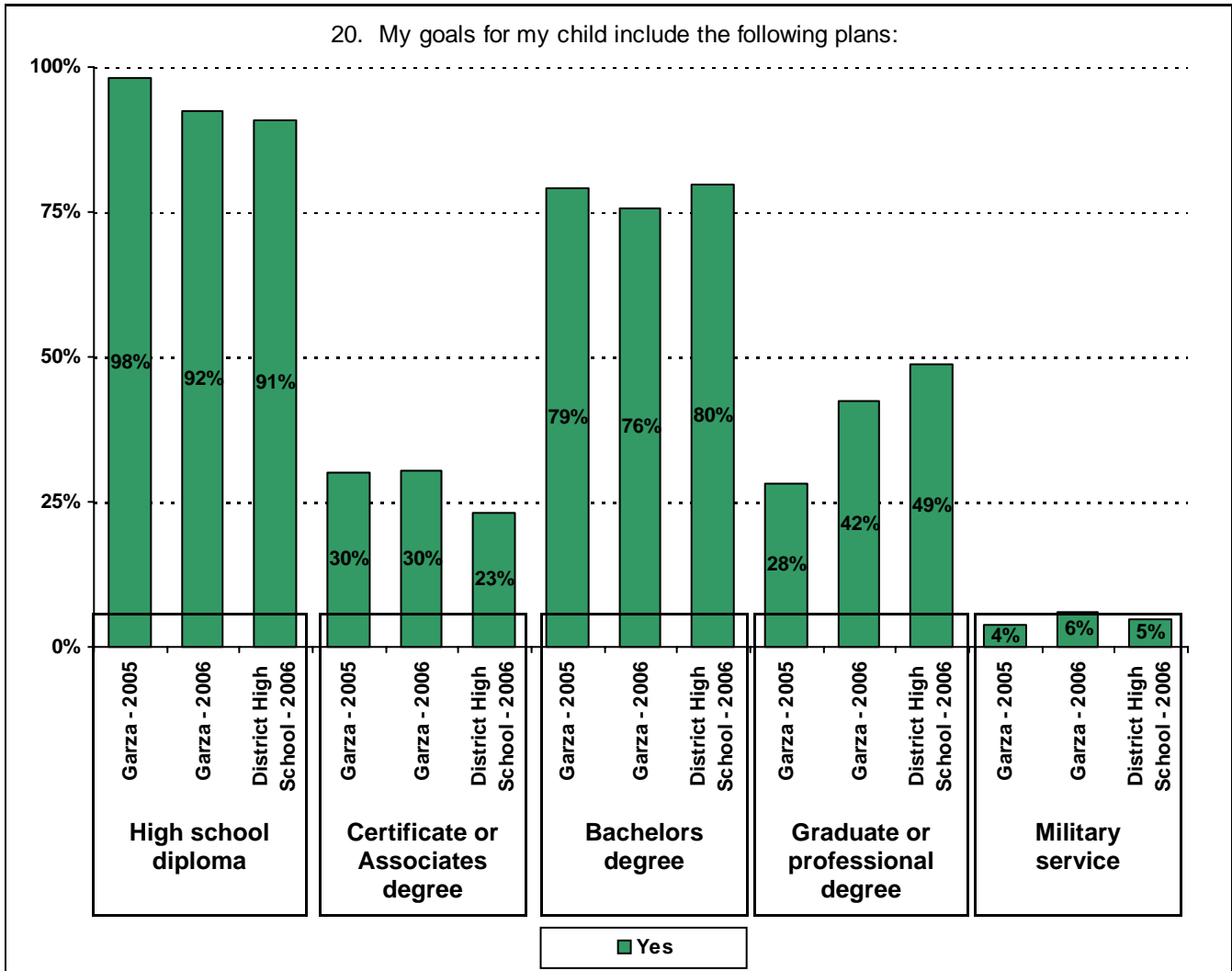








20. My goals for my child include the following plans:



Respondents who selected Certificate, Associates, Bachelors, or Graduate degree were included in the "Yes" percentage for High School diploma, even if they did not select the High School diploma option. Respondents who selected Graduate degree were included in the "Yes" percentage for Bachelors degree, even if they did not select the Bachelors degree option.

## Item Response Details

Number of Garza High School Parent Responses, by Response Option

		Strongly Agree	Agree	Disagree	Strongly Disagree	Don't Know/NA
<b>4.</b>	<b>n = 57</b>		1	56		
<b>5a.</b>	<b>n = 63</b>	40	8	0	4	11
<b>5b.</b>	<b>n = 63</b>	36	14	0	3	10
<b>5c.</b>	<b>n = 65</b>	49	8	0	4	4
<b>5d.</b>	<b>n = 63</b>	36	14	3	3	7
<b>5e.</b>	<b>n = 64</b>	45	9	0	3	7
<b>6a.</b>	<b>n = 60</b>	22	18	3	3	14
<b>6b.</b>	<b>n = 60</b>	22	19	2	4	13
<b>6c.</b>	<b>n = 60</b>	34	14	3	3	6
<b>6d.</b>	<b>n = 60</b>	24	19	3	4	10
<b>6e.</b>	<b>n = 60</b>	37	12	2	4	5
<b>7a.</b>	<b>n = 59</b>	21	14	7	4	13
<b>7b.</b>	<b>n = 60</b>	16	18	6	4	16
<b>7c.</b>	<b>n = 63</b>	35	16	3	4	5
<b>7d.</b>	<b>n = 59</b>	19	21	4	4	11
<b>7e.</b>	<b>n = 61</b>	35	12	1	4	9
<b>8a.</b>	<b>n = 60</b>	25	15	3	4	13
<b>8b.</b>	<b>n = 59</b>	23	17	2	4	13
<b>8c.</b>	<b>n = 61</b>	33	17	1	3	7
<b>8d.</b>	<b>n = 59</b>	23	15	2	4	15
<b>8e.</b>	<b>n = 59</b>	34	13	1	3	8
<b>9a.</b>	<b>n = 63</b>	41	8	0	3	11
<b>9b.</b>	<b>n = 63</b>	39	9	0	3	12
<b>9c.</b>	<b>n = 61</b>	45	9	0	3	4
<b>9d.</b>	<b>n = 62</b>	37	11	2	3	9
<b>9e.</b>	<b>n = 63</b>	45	10	1	3	4
<b>9f.</b>	<b>n = 61</b>	36	10	0	3	12
<b>10.</b>	<b>n = 62</b>	7	15	5	8	27
<b>11.</b>	<b>n = 63</b>	34	19	2	4	4
<b>12.</b>	<b>n = 63</b>	41	17	3	2	0

**13a. n = 63**

**13b. n = 62**

**13c. n = 63**

---