



**RESULTS OF THE AISD HIGH SCHOOL EXIT SURVEY
CLASS OF 2007**

GARZA HIGH SCHOOL

The fifth annual Austin ISD High School Exit Survey was administered electronically to seniors in every AISD High School during the Spring of 2007. This report contains the results for the Class of 2007, along with a longitudinal summary of responses, where available¹.

The survey is organized into five general topics: Postsecondary Intentions, Postsecondary Preparation, Campus Climate and High School Experiences, Technology Usage, and Parent Involvement. Individual item results are presented, both for your campus and for all High Schools.

The district-wide response rate for the High School Exit Survey remained similar to that of previous years (Table 1). Surveys were received from 3,235 students in the Class of 2007. The survey sample once again closely resembles the ethnic and gender distribution of the district's senior class, indicating that the results are representative of the entire senior class population.

Table 1. AISD High School Exit Survey Response Rates, Classes of 2004 to 2007

	Percentage of Enrolled Seniors Responding ²			
	Class of 2004	Class of 2005	Class of 2006	Class of 2007
GARZA	63.8%	57.3%	69.9%	57.5%
ALL HIGH SCHOOLS	81.5%	85.3%	86.0%	82.0%

INDIVIDUAL ITEM RESPONSES FOR GARZA HIGH SCHOOL

Results for your campus and all High Schools are presented below. Please use these data to identify trends in the responses of your seniors over time, and to examine how your campus results compare to the results for All High Schools.

¹ Previous years' data not available for items indicated with **.

² Corrected response rate for All High Schools in 2007 is 87.0%. Please see Appendix for detailed information about campus response rates for 2007. Response rates are based on enrollment during the 6th six weeks reporting period. See Appendix for more detail regarding survey respondents. Note: Due to enrollment of some Special Education students with severe cognitive disabilities, a 100% uncorrected response rate is not expected.

Item 1. *What is the ONE thing that you especially*

the gonzalo garza hih school is the most great thing that happen in may life. this hih school helped me a lot with my studies, and helpme to take care may douter in their day care.

Yall have really changed my life around Graza is the best school to attend becuase i almost dropped out but then there were teachers thats was going help me through it so i didnt.

*The staff at Garza is very supportive and understanding. Without their encouragment I would not be graduating at all or going to my top choice college...Texas A&M University Corpus Christi
Between LBJ, Crockett, and Bowie, Garza High school is by far the best school I've been to.*

Advice for improvement. Students also felt that there were some areas that could use improvement:

They need to keep track of their students credits. They seem to be good with losing them!

I strongly believe that Garza High school should offer the option of taking math and science classes in a traditional classroom manor. In my observations, a self-paced, self-taught, program works very well with social studies but poorly with math and science.&CR;&CR;Garza has four periods a day, I believe if courses would be offered in a traditional manor for one of those periods, students could learn a great deal more.

I strongly believe that the college scholarship search engine for AISD is very slanted. The AISD college scholarship database contains about %95 of scholarships that are only open to minority students. As a poor white student, I found the scholarship database to be almost useless to my needs.

I think that teachers, AP's, hall monitors, and police officers tend to treat most students as though the students have automatically done something wrong. The result of this is plainly obvious: that is, a much more oppressive atmosphere that treats the students like inmates who are being forced beyond their will to perform in school. (this applies to my experience at Austin High)

To make breaks during periods or be more lienant when it comes to having to use the bathroom or water or snacks break not everyone can control heir hunger!!!

Item 2. Within a year after graduating from high school, what do you plan to do?

	2004-2005		2005-2006		2006-2007	
	ALL HS	GARZA	ALL HS	GARZA	ALL HS	GARZA

Continue my educatio.2 0.60392 scn1926 190.90.98 -6.12 -12.66 re72.72 190.98 m66 re365.34 203.64 m578.84 19 19

Item 4. *How many different high schools have you attended?*

	2005-2006		2006-2007	
	ALL HS	GARZA	ALL HS	GARZA
1	73.9%	4.1%	76.1%	4.5%
2	17.5%	51.6%	16.8%	60.2%
3 or more	8.6%	44.3%	7.2%	34.1%

Items 6a-n. Climate

	2004-2005		2005-2006		2006-2007	
	ALL HS	GARZA	ALL HS	GARZA	ALL HS	GARZA
School Climate						
This school is a safe place to learn.	3.2	3.7	3.1	3.8	3.1	3.8
The students at this school get along with each other.	2.7	3.5	2.6	3.6	2.6	3.6
The rules of this school are implemented fairly.	2.6	3.7	2.5	3.6	2.5	3.7
The adults at this school listen to the opinions of students.	2.6	3.7	2.6	3.8	2.5	3.8
There is at least one adult at my school who I can go to if I have a problem.	**	**	**	**	3.2	3.8
My teachers are fair with me.	**	**	**	**	3.1	3.8
School Climate Composite Score^a (=.76)	2.8	3.6	2.7	3.7	2.8	3.7
Academic Climate						
My teachers taught in a way that was clear and easy to understand.	3.0	3.6	3.0	3.7	3.0	3.7
I know how I am doing in school.⁺	3.1	3.6	3.1	3.7	3.2	3.7
My teachers kept me informed about how I was doing in my classes.	2.9	3.5	2.8	3.6	2.9	3.7
My teachers expect me to do high quality work.	3.2	3.6	3.2	3.6	3.2	3.7
My classes were rigorous and challenging.	2.9	3.1	2.8	3.2	2.9	3.2
My high school coursework has been relevant to my life.	**	**	2.6	2.7	2.6	3.3
My teachers care about how I do in school.	**	**	**	**	2.6	3.8
I received extra help early in the school year so that I could graduate on time.^b	2.7	3.0	2.6	3.2	3.1	3.1
Academic Climate Composite Score (=.81)	3.0	3.5	2.9	3.5	3.0	3.6

Notes: Responses can range from 1 (strongly disagree) to 4 (strongly agree).

⁺In previous years, this item was worded, "I have learned how to evaluate my own work and keep track of my progress."

^aIn 2005 and 2006, composite scores were calculated *without* items indicated by **, therefore comparability across the three year period is limited.

^bThis item was not included in the computation of the academic climate score.

Item 5.

Item 8. *Here is a list of community organizations found in and around Austin. Please indicate which of them, if any, you have participated in while in High School.*

Organization	AKINS	ANDERSON	AUSTIN	BOWIE	CROCKETT	GARZA
--------------	-------	----------	--------	-------	----------	-------

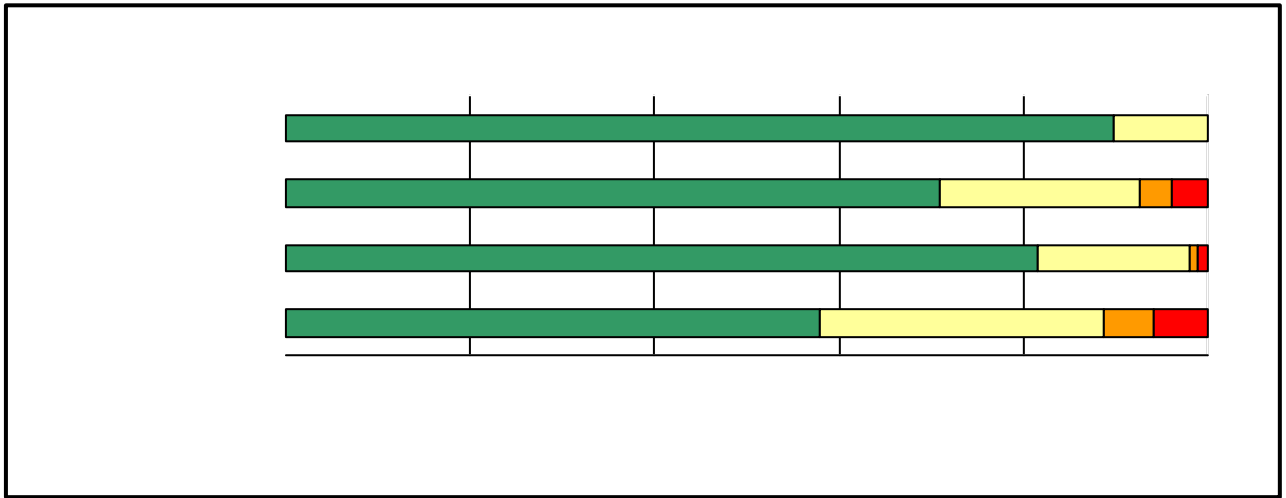
Item 11. *How well did your high school help you to further develop knowledge and skills in the following areas?*

	2004-2005		2005-2006		2006-2007	
	ALL HS	GARZA	ALL HS	GARZA	ALL HS	GARZA
Creative Thinking	2.4	2.8	2.4	2.8	2.3	2.8

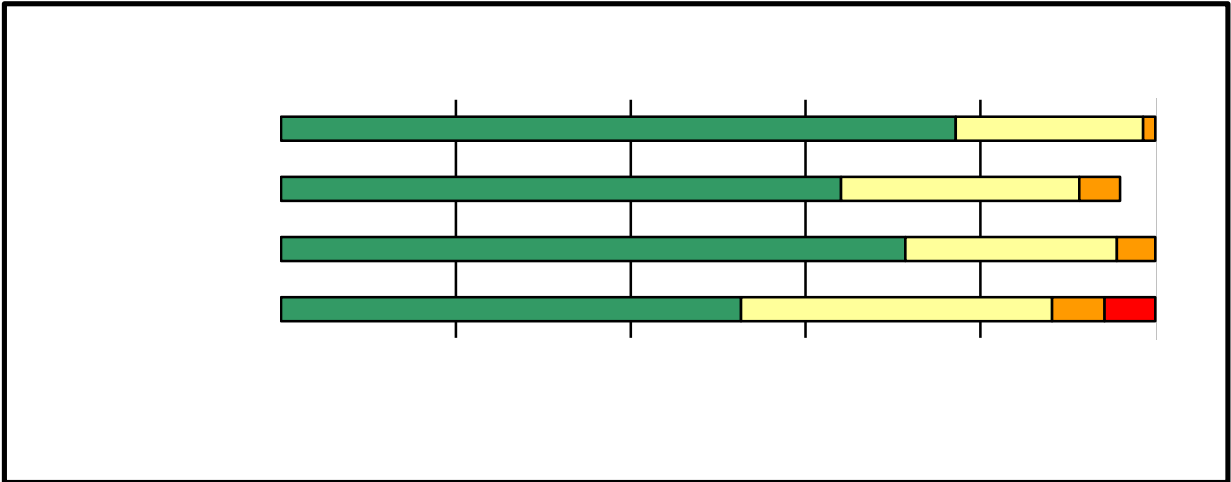
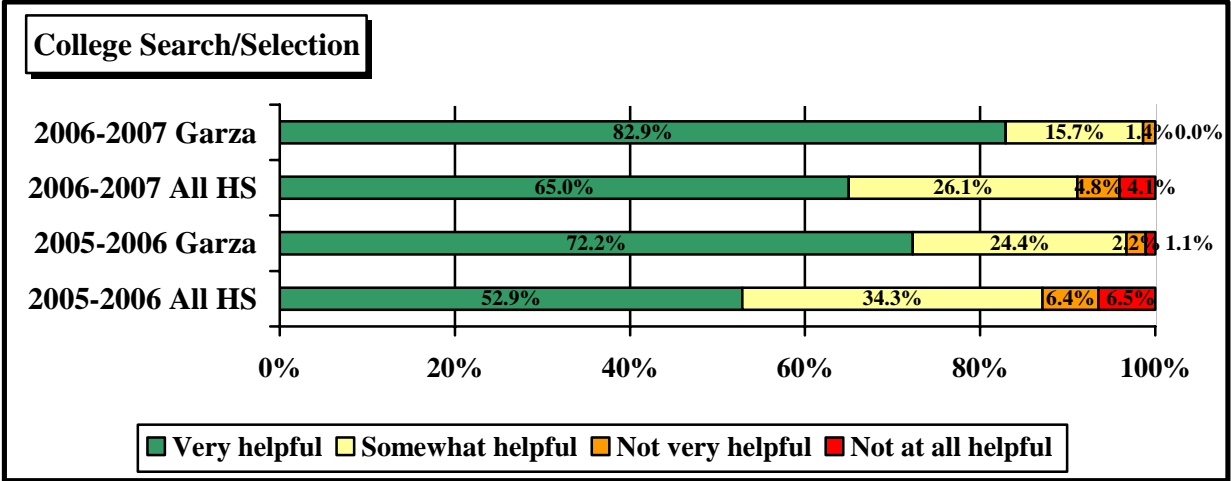
Item 14. *How often do you use a computer...*

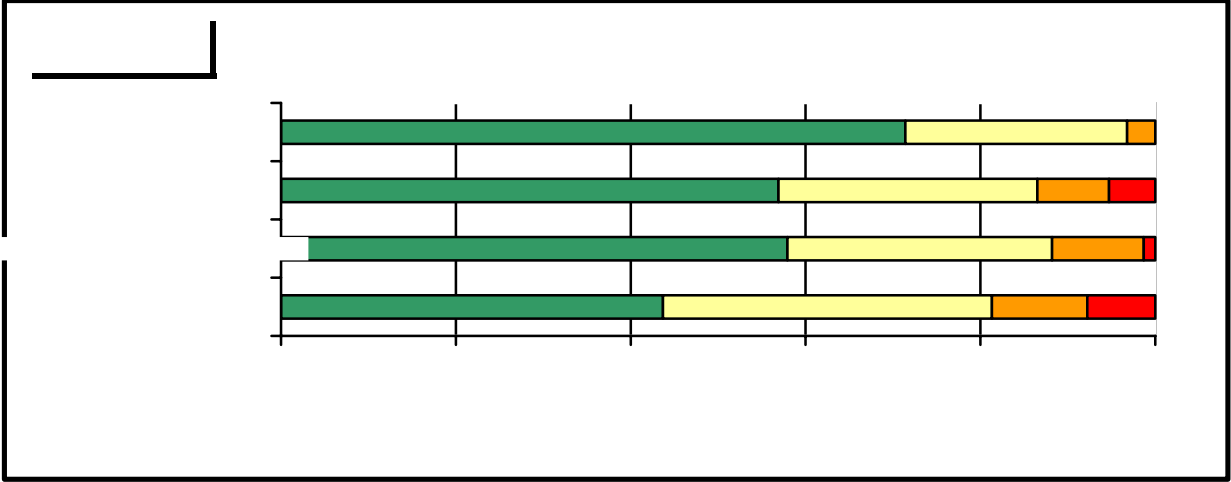
Location or Activity	2005-2006		2006-2007
	ALL HS	GARZA	ALL HS

Item 19. *How helpful was your Project ADVANCE/College Advisor in the following types of meetings?*

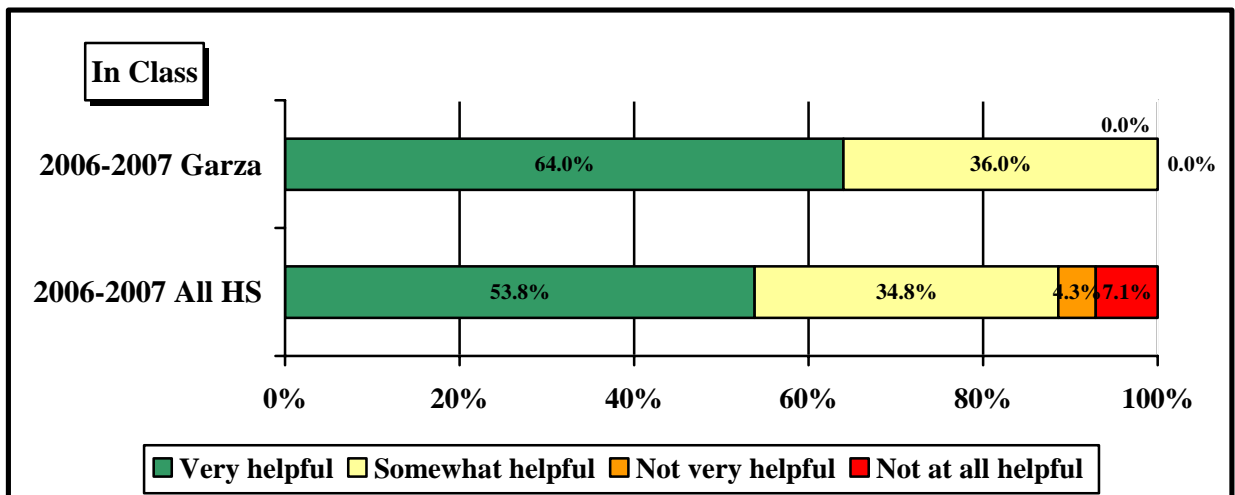
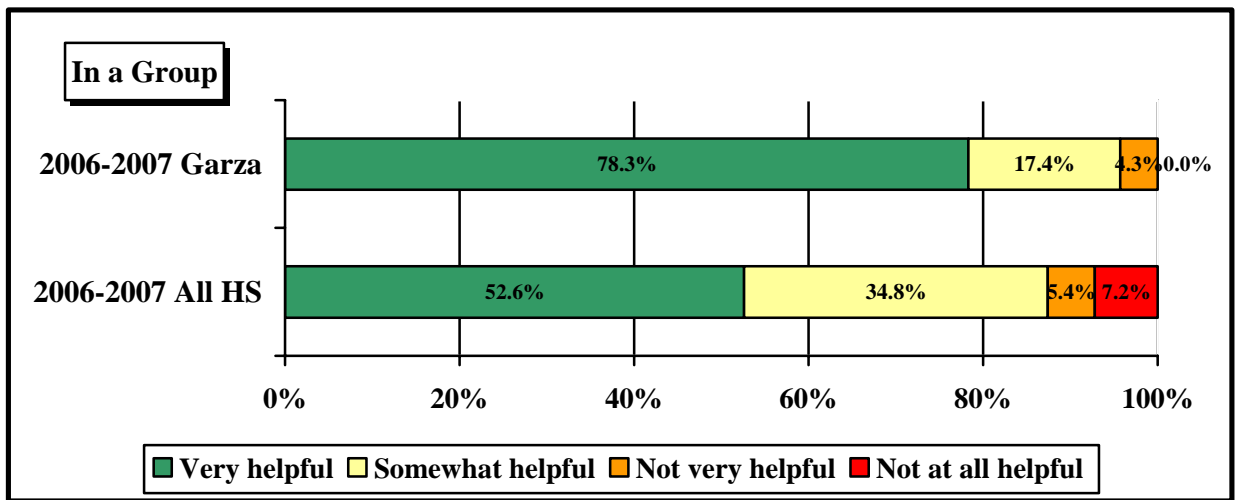
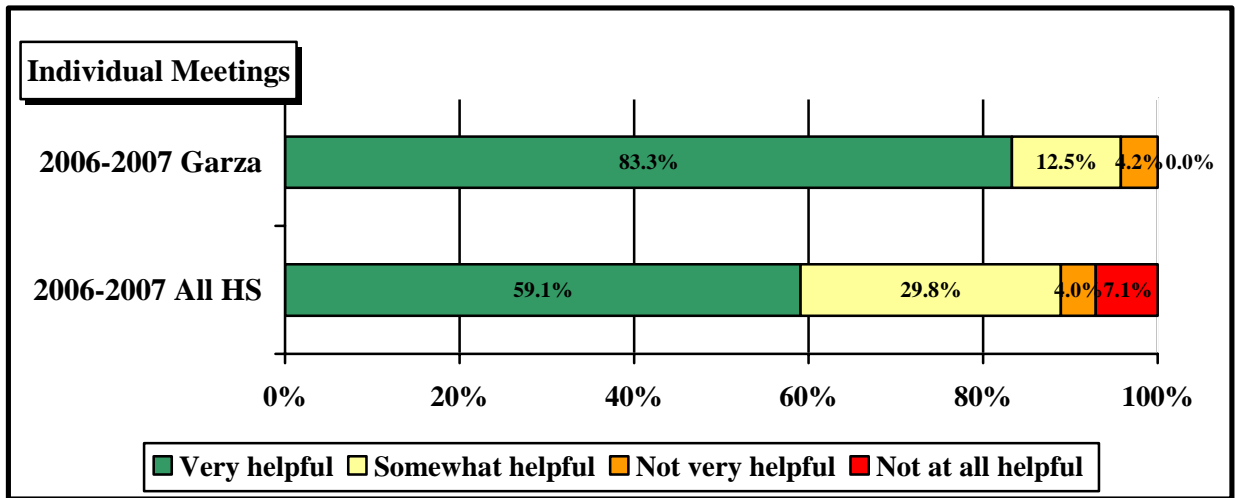


Item 20. How helpful was your Project ADVANCE Facilitator/College Advisor with the following processes?





Item 21. How helpful was your Advocate in the following types of meetings? (Skip this question if you do not have an Advocate).



Item 22.

Item 23.

Item 24. For which of the following issues did you meet with a school counselor?

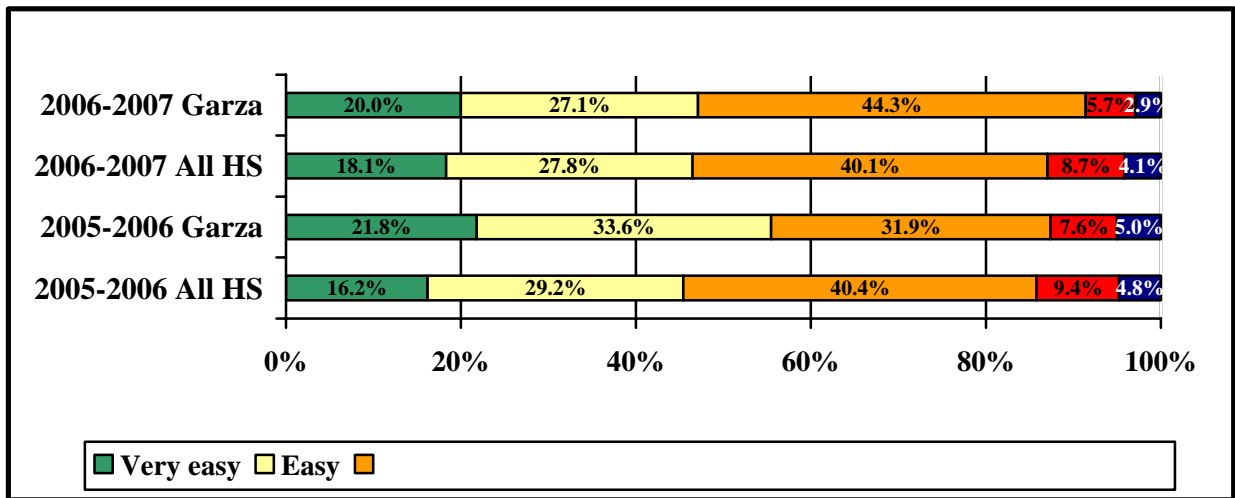
Issue	2005-2006		2006-2007	
	ALL HS	GARZA	ALL HS	GARZA
Scheduling	81.5%	91.9%	76.7%	86.4%

Item 26. To what extent were your parents involved in the following school-related things?

	2005-2006		2006-2007	
	ALL HS	GARZA	ALL HS	GARZA
Working with you on homework or school projects	2.8	2.5	2.8	2.4
Volunteering at your school	2.3	1.8	2.3	1.8
Helping you decide what classes to take	2.9	2.5	2.9	2.4
Attending school activities or meetings	2.9	2.4	2.9	2.5
Communicating with your teachers	**	**	2.9	3.1

Note: Response options include 1 (Never), 2 (Rarely), 3 (Occasionally), 4 (Often), and 5 (Consistently).

Item 27. How easy has it been for you and your parents to understand the process of financial aid (whether or not you applied)?



Item 28. *How far did your parents go in school? Indicate your mother and father's highest level of education.*

	2005-2006*	2006-2007
--	------------	-----------

Items 30-35. *To which of the following have you submitted applications; to which of the following have you already been accepted?*



Item 37. *Within a year after graduating from high school, I am going to:*

2004-2005

Don't Know	12.7%	14.6%	10.0%	10.0%
------------	-------	-------	-------	-------

Item 41. How important is each of the following in choosing a college?

	2005-2006		2006-2007	
	ALL HS	GARZA	ALL HS	GARZA
College expenses	**	**	2.4	2.4
Availability of financial aid	**	**	2.4	2.4
Availability of specific courses or curriculum	**	**	2.6	2.7
Reputation of the college in athletic programs	**	**	1.8	1.5
Social life at the college	**	**	2.2	1.9
Ability to live at home and attend college	**	**	1.8	1.8
Job or employment placement record of the college	**	**	2.1	2.1
Reputation of the college in academic programs	**	**	2.2	2.4
Easy admission standards	**	**	2.5	1.9
Ability to take courses online	**	**	2.0	1.5

Note: Scores range from 1 (not important) to 3 (very important).

For those students without plans to attend postsecondary education within the next year:

Item 42. If you are not planning to pursue further education at this time, what are your primary reasons?

	2004-2005		2005-2006		2006-2007	
	ALL HS	GARZA	ALL HS	GARZA	ALL HS	GARZA
Cannot afford.	33.6%	25.0%	25.0%	19.2%	25.9%	11.1%
Childcare responsibilities.	7.3%	8.3%	6.5%	7.7%	7.8%	16.7%
Don't like school.	15.9%	29.2%	13.6%	11.5%	15.8%	11.1%
Low grades/scores.	28.4%	12.5%	23.7%	11.5%	19.8%	11.1%
Not academically prepared.	17.5%	8.3%	13.1%	11.5%	13.4%	11.1%
Need income for myself.	**	**	23.7%	26.9%	28.9%	50.0%
Need income for others.	**	**	11.8%	7.7%	9.6%	11.1%
Not needed for job.	10.0%	8.3%	11.8%	11.5%	9.4%	5.6%
Military service	**	**	**	**	11.2%	5.6%
Other.	17.7%	25.0%	44.9%	57.7%	16.8%	33.3%

Note: Respondents may select more than one option; percentages will not total 100%.

Item 43. *If you are not planning to pursue further education at this time, do you intend to pursue it at a later time?*

	2005-2006		2006-2007	
	ALL HS	GARZA	ALL HS	GARZA
Yes, Definitely	36.6%	42.3%	45.8%	86.7%
Yes, Probably	15.3%	19.2%	15.9%	6.7%
Maybe	21.3%	15.4%	20.6%	0.0%
Probably Not	2.6%	3.8%	4.0%	0.0%
Definitely Not	2.1%	0.0%	2.2%	0.0%
Don't Know	22.1%	19.2%	11.5%	6.7%

For all students:

Items 45-47. *Voting*

	2004-2005		2005-2006		2006-2007	
	ALL HS	GARZA	ALL HS	GARZA	ALL HS	GARZA
<i>Are you eligible to vote in the U.S.?</i>	59.9%	75.0%	54.0%	62.6%	58.1%	64.8%
<i>If you are eligible, have you registered to vote?</i>	44.7%	49.4%	49.6%	60.0%	38.5%	

APPENDIX

Table A.1. Response Rate and Respondent Demographic Characteristics

	Seniors Enrolled	# Surveys	Initial Response Rate	African Am	Hispanic	White	Female	Male	# Removed	Final N	Corrected Response Rate
Akins		354	79.2%	11.9%	62.4%	22.0%	46.0%	54.0%	<39>	408	86.8%
Anderson		407	89.3%	5.2%	18.9%	67.0%	48.6%	51.4%	<20>	437	93.3%